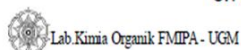


LAMPIRAN

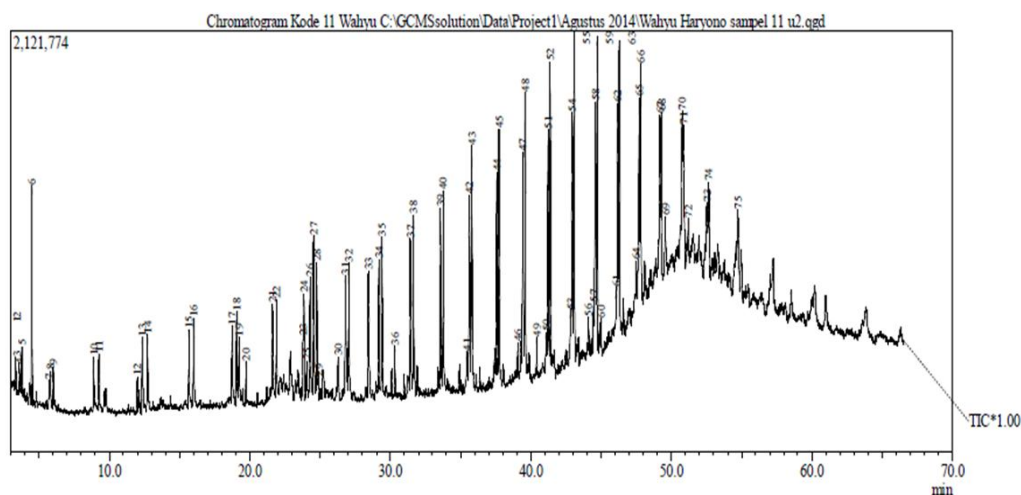
C:\GCMSsolution\Data\Project1\Agustus 2014\Wahyu Haryono sampel 11 u2.qgd

9/9/2016



Sample Information

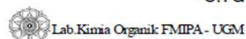
Analyzed by : Admin
 Sample Name : Kode 11 Wahyu
 Sample ID :
 Data File : C:\GCMSsolution\Data\Project1\Agustus 2014\Wahyu Haryono sampel 11 u2.qgd
 Method File : C:\GCMSsolution\Data\Project1\Agustus 2014\Asap cair Balai Kilit.qgm
 Tuning File : C:\GCMSsolution\System\Tune1\AGUSTUS 23 2016C.qgt



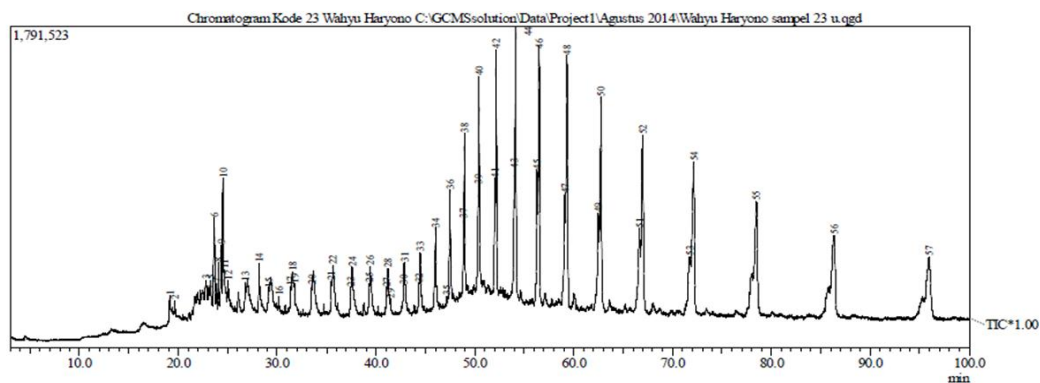
Peak#	R Time	L Time	F Time	Area	Area%	Height	Peak Report TIC	Name
1	2.660	2.625	2.692	381038	0.23	203389		
2	2.727	2.692	2.792	508307	0.31	241177		
3	3.334	3.300	3.383	287864	0.17	146771		
4	3.608	3.575	3.733	367395	0.22	128549		
5	3.768	3.733	3.825	502937	0.31	220102		
6	4.495	4.442	4.575	2907848	1.76	1094053		
7	5.708	5.667	5.792	482599	0.29	122552		
8	5.818	5.792	5.883	469325	0.28	176466		
9	6.020	5.975	6.083	590666	0.36	192552		
10	8.892	8.842	8.967	866129	0.53	256528		
11	9.268	9.217	9.342	844088	0.51	265539		
12	11.989	11.942	12.050	496244	0.30	168733		
13	12.352	12.300	12.442	1266651	0.77	354247		
14	12.723	12.675	12.792	1053003	0.64	348516		
15	15.667	15.608	15.742	1163340	0.71	360784		
16	16.009	15.950	16.092	1345050	0.82	420464		
17	18.748	18.692	18.833	1316970	0.80	372908		
18	19.060	19.000	19.158	1636002	0.99	447658		
19	19.242	19.158	19.308	962518	0.58	297734		
20	19.730	19.683	19.783	571444	0.35	201293		
21	21.613	21.558	21.742	1753115	1.06	433903		
22	21.895	21.833	21.958	1525611	0.93	457902		
23	23.792	23.725	23.825	1273367	0.77	299178		
24	23.860	23.825	23.950	1858569	1.13	521822		
25	24.044	23.992	24.100	655181	0.40	167685		
26	24.290	24.100	24.425	3303578	2.00	596589		
27	24.549	24.425	24.633	3328778	2.02	811117		
28	24.766	24.633	24.842	3066355	1.86	680756		
29	24.908	24.842	24.950	521287	0.32	101618		
30	26.304	26.258	26.383	585042	0.35	164935		
31	26.806	26.742	26.900	2049306	1.24	566948		
32	27.042	26.900	27.133	2075916	1.26	603636		
33	28.455	28.383	28.558	2656662	1.61	601791		
34	29.182	29.117	29.275	2532776	1.54	654718		
35	29.401	29.275	29.517	2874901	1.74	776574		
36	30.331	30.283	30.392	608063	0.37	223446		
37	31.437	31.367	31.533	3038996	1.84	756098		
38	31.640	31.533	31.792	3742977	2.27	891083		
39	33.584	33.508	33.683	3482155	2.11	903830		
40	33.768	33.683	33.858	3787461	2.30	978353		
41	35.450	35.417	35.567	285317	0.17	99051		
42	35.627	35.567	35.708	3305044	2.00	898878		
43	35.798	35.708	35.883	4096800	2.49	1153792		
44	37.573	37.500	37.658	3907856	2.37	1023576		
45	37.738	37.658	37.833	4842983	2.94	1254247		
46	39.076	39.033	39.142	423747	0.26	152149		
47	39.439	39.367	39.508	4165472	2.53	1076956		
48	39.596	39.508	39.675	5319694	3.23	1397407		
49	40.418	40.375	40.475	497824	0.30	170334		
50	41.086	41.042	41.142	497701	0.30	134489		
51	41.229	41.142	41.300	4727087	2.87	1166875		
52	41.375	41.300	41.458	5687679	3.45	1520912		
53	42.833	42.758	42.883	1213785	0.74	222689		

Peak#	R.Time	I.Time	F.Time	Area	Area%	Height	Name
54	42.943	42.883	43.008	5143557	3.12	1234520	
55	43.082	43.008	43.158	6255441	3.79	1660429	
56	44.103	44.058	44.150	468458	0.28	139739	
57	44.467	44.417	44.517	723871	0.44	184274	
58	44.593	44.517	44.650	5138706	3.12	1220216	
59	44.720	44.650	44.792	6195330	3.76	1568589	
60	44.998	44.967	45.050	348636	0.21	119437	
61	46.067	46.025	46.108	585786	0.36	163892	
62	46.187	46.108	46.242	4897852	2.97	1110125	
63	46.299	46.242	46.408	5829336	3.54	1448440	
64	47.485	47.450	47.542	499533	0.30	179449	
65	47.712	47.642	47.758	3368245	2.04	893721	
66	47.817	47.758	47.892	4133586	2.51	1129676	
67	49.187	49.117	49.242	2781067	1.69	701270	
68	49.291	49.242	49.375	2955593	1.79	790440	
69	49.573	49.525	49.650	842741	0.51	242342	
70	50.770	50.683	50.825	3599867	2.18	652222	
71	50.861	50.825	51.000	3197530	1.94	638093	
72	51.193	51.150	51.275	739535	0.45	171222	
73	52.533	52.458	52.567	1071121	0.65	273972	
74	52.657	52.567	52.775	2698154	1.64	434276	
75	54.741	54.667	54.850	1671029	1.01	311155	
				164857477	100.00	42750851	

Gambar variasi 70 % batubara 30 % plastik tanpa katalis, dengan temperatur 450°C.



Sample Information
 Analyzed by : Admin
 Sample Name : Kode 23 Wahyu Haryono
 Sample ID : 8.16.17.3
 Data File : C:\GCMSsolution\Data\Project1\Agustus 2014\Wahyu Haryono sampel 23 u.qgd
 Method File : C:\GCMSsolution\Data\Project1\Agustus 2014\Asap cair.qgm
 Tuning File : C:\GCMSsolution\System1\Tune1\AGUSTUS 23 2016.C.qgt



Peak#	R. Time	I. Time	F. Time	Area	Area%	Height	Name
1	19.136	19.050	19.233	478970	0.25	105814	
2	19.639	19.567	19.725	265770	0.14	71564	
3	22.789	22.683	22.975	909385	0.47	104001	
4	23.033	22.975	23.217	709694	0.36	55437	
5	23.258	23.217	23.358	561684	0.29	125862	
6	23.643	23.492	23.775	3325698	1.71	494186	
7	23.851	23.775	23.958	689187	0.35	141374	
8	24.043	23.975	24.183	1152497	0.59	257658	
9	24.318	24.183	24.442	1839823	0.94	327377	
10	24.524	24.442	24.633	3720560	1.91	673285	
11	24.667	24.633	24.767	605722	0.31	144649	
12	25.043	24.958	25.150	459813	0.24	104896	
13	26.783	26.700	26.933	480241	0.25	98251	
14	28.156	28.025	28.433	2316524	1.19	257232	
15	29.133	29.042	29.258	390985	0.20	57516	
16	30.165	30.092	30.275	301994	0.16	75146	
17	31.367	31.275	31.467	971512	0.50	118452	
18	31.552	31.467	31.692	2034186	1.04	195535	
19	31.733	31.692	31.883	662759	0.34	121133	
20	33.492	33.433	33.592	410685	0.21	86256	
21	35.500	35.400	35.583	1036068	0.53	149210	
22	35.642	35.583	35.983	2754515	1.41	237326	
23	37.458	37.350	37.517	871389	0.45	124592	
24	37.568	37.517	37.900	2583940	1.33	231846	
25	39.292	39.183	39.350	775364	0.40	140966	
26	39.408	39.350	39.642	2027991	1.04	222819	
27	41.067	40.983	41.100	539072	0.28	124483	
28	41.185	41.100	41.417	2668668	1.37	230239	
29	41.467	41.417	41.517	211792	0.11	62502	
30	42.758	42.658	42.775	481248	0.25	127460	
31	42.873	42.775	43.108	2495547	1.28	251803	
32	44.358	44.275	44.400	575315	0.30	126827	
33	44.462	44.400	44.700	2535414	1.30	295717	
34	46.008	45.808	46.233	4003719	2.06	416547	
35	47.175	47.108	47.333	269267	0.14	47899	
36	47.498	47.333	47.692	5092578	2.62	605970	
37	48.842	48.675	48.875	1806780	0.93	413610	
38	48.933	48.875	49.150	5418565	2.78	883199	
39	50.336	50.142	50.367	3005159	1.54	569607	
40	50.436	50.367	50.608	7035980	3.61	1162599	
41	52.024	51.833	52.075	3942148	2.02	634278	
42	52.147	52.075	52.367	8330094	4.28	1351284	
43	53.981	53.792	54.042	4852045	2.49	700016	
44	54.140	54.042	54.342	10121227	5.20	1502261	
45	56.310	56.125	56.375	4766421	2.45	684751	
46	56.485	56.375	56.692	11140082	5.72	1378892	
47	59.114	58.850	59.167	5560326	2.86	588882	
48	59.323	59.167	59.567	13244149	6.80	1371936	
49	62.504	62.267	62.592	5187675	2.66	474965	
50	62.757	62.592	63.000	12331381	6.33	1142529	
51	66.643	66.433	66.775	4671548	2.40	392667	
52	66.977	66.775	67.217	11730207	6.02	944863	
53	71.747	71.492	71.817	3370687	1.73	264221	
54	72.140	71.817	72.417	12759645	6.55	818843	
55	78.465	78.217	78.758	7494205	3.85	509504	
56	86.345	86.067	86.567	4972398	2.55	321792	
57	95.934	95.842	96.217	1762885	0.91	119519	
				194713183	100.00	23242048	

1 / 1

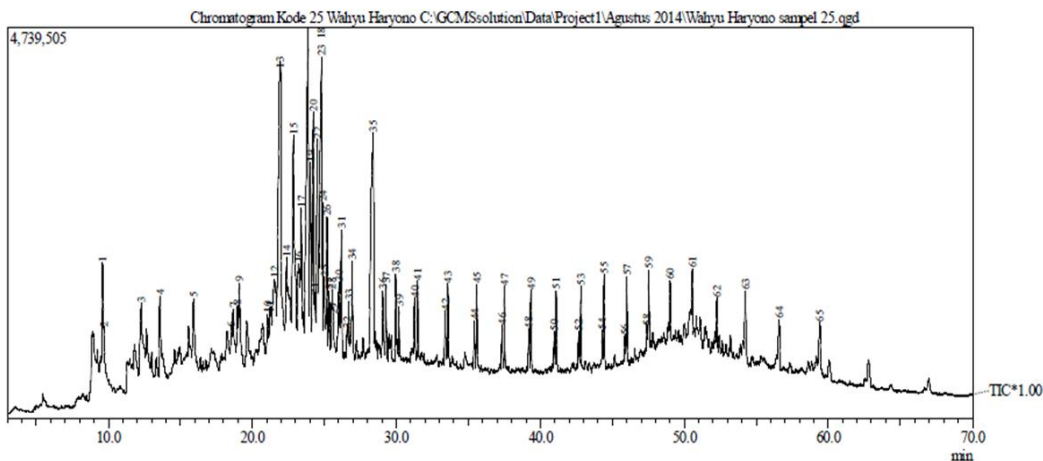
Gambar variasi 70 % batubara 30 % plastik dengan katalis 40 gram, dengan temperatur 450°C.



Lab Kimia Organik FMIPA - UGM

Sample Information

Analyzed by : Admin
 Sample Name : Kode 25 Wahyu Haryono
 Sample ID : 8.16.17.3
 Data File : C:\GCMSsolution\Data\Project1\Agustus 2014\Wahyu Haryono sampel 25.qgd
 Method File : C:\GCMSsolution\Data\Project1\Agustus 2014\Asap cair.qgm
 Tuning File : C:\GCMSsolution\System1\Tune1\AGUSTUS 23 2016C.qgr



Peak#	R.Time	I.Time	F.Time	Area	Area%	Height	Name
1	9.609	9.533	9.692	6276081	1.53	1239834	
2	9.708	9.692	9.850	1779477	0.43	483079	
3	12.269	12.125	12.408	5883320	1.43	662859	
4	13.592	13.508	13.725	4760767	1.16	880380	
5	15.929	15.825	16.100	4680755	1.14	737761	
6	18.525	18.458	18.625	2098904	0.51	285909	
7	18.668	18.625	18.767	1867833	0.46	449700	
8	18.975	18.892	19.042	2569684	0.63	517290	
9	19.100	19.042	19.283	5599789	1.37	829906	
10	21.042	20.967	21.175	2385607	0.58	418056	
11	21.217	21.175	21.383	3205022	0.78	328142	
12	21.524	21.383	21.700	7792258	1.90	582823	
13	21.923	21.700	22.067	33757800	8.23	2896281	
14	22.382	22.267	22.442	2992155	0.73	559141	
15	22.848	22.700	23.092	20559863	5.01	2295089	
16	23.211	23.092	23.300	7035907	1.72	810992	
17	23.410	23.300	23.492	9517906	2.32	1501532	
18	23.893	23.492	23.942	40759814	9.94	3730462	
19	24.034	23.942	24.100	10173725	2.48	2102313	
20	24.239	24.100	24.300	15699187	3.83	2731745	
21	24.350	24.300	24.392	2272137	0.55	521839	
22	24.520	24.392	24.567	14285751	3.48	2428500	
23	24.809	24.567	24.850	32527867	7.93	3448197	
24	24.885	24.850	24.942	5523289	1.35	1692759	
25	24.999	24.942	25.100	4026582	0.98	806002	
26	25.203	25.100	25.258	8238280	2.01	1551195	
27	25.331	25.267	25.433	3023706	0.74	673879	
28	25.548	25.433	25.600	4053593	0.99	701153	
29	25.642	25.600	25.708	1604013	0.39	367419	
30	26.017	25.908	26.100	4138959	1.01	747063	
31	26.206	26.100	26.333	7522074	1.83	1491439	
32	26.567	26.500	26.667	2271384	0.55	341894	
33	26.707	26.667	26.775	2506492	0.61	683624	
34	26.945	26.775	27.083	7440432	1.81	1176875	
35	28.388	28.100	28.442	28604726	6.98	2553207	
36	29.061	28.958	29.217	4289671	1.05	788242	
37	29.283	29.217	29.392	3109118	0.76	890921	
38	29.963	29.850	30.017	4215279	1.03	1042035	
39	30.193	30.017	30.275	3000787	0.73	602636	
40	31.271	31.192	31.375	2857380	0.70	706592	
41	31.484	31.400	31.592	3827791	0.93	945773	
42	33.386	33.308	33.483	2850425	0.70	650805	
43	33.586	33.483	33.700	4086985	1.00	961275	
44	35.407	35.333	35.508	2281801	0.56	575425	
45	35.591	35.508	35.692	3720362	0.91	1005121	
46	37.348	37.267	37.433	2067280	0.50	522490	
47	37.510	37.433	37.600	3737360	0.91	991938	
48	39.192	39.117	39.275	2015326	0.49	495650	
49	39.349	39.275	39.458	3789709	0.92	978486	
50	40.963	40.875	41.033	1799221	0.44	442605	
51	41.108	41.033	41.225	3706806	0.90	952932	
52	42.663	42.592	42.725	1703188	0.42	428301	
53	42.797	42.725	42.900	3791604	0.92	976975	
54	44.300	44.225	44.358	1524132	0.37	404348	
55	44.430	44.358	44.525	4278129	1.04	1103754	
56	45.867	45.800	45.942	1356494	0.33	292810	
57	46.001	45.942	46.108	3890014	0.95	1018368	
58	47.392	47.325	47.467	1342455	0.33	265493	
59	47.529	47.467	47.608	3647338	0.89	936031	

Peak#	R. Time	I. Time	F. Time	Area	Area%	Height	Name
60	49.005	48.925	49.092	2531958	0.62	671167	
61	50.552	50.475	50.625	2898329	0.71	670426	
62	52.250	52.167	52.350	2524167	0.62	594544	
63	54.240	54.133	54.383	4283488	1.04	767437	
64	56.575	56.467	56.700	3422647	0.83	545469	
65	59.398	59.275	59.542	4070426	0.99	546958	
				410054809	100.00	65003346	

Gambar variasi 100 % batubara tanpa katalis, dengan temperatur 500°C.