

## **CHAPTER II**

### **RESEARCH OBJECT DESCRIPTION**

#### **A. Education Department of Yogyakarta City**

##### **1. Profile of Education Department**

Education Department located di Jl. HayamWuruk No. 11 Yogyakarta 55212. Education Department of Yogyakarta City is implementing the educational supervisor or facilitator in Yogyakarta city. Everything that related to the education that will be held in Yogyakarta must have approval from the Education Department of Yogyakarta City.

The Department contact is (0274) 512956, 563078 and email is pendidikan@yogyakarta.go.id. The education department also provides a website in order to give information and data about the education in Yogyakarta City, the website is pendidikan.jogjakota.go.id.

##### **2. Vision, Mission and Goalsof Education Department**

###### **Vision:**

The realization of quality education, character and inclusive with the support of professional human resources.

###### **Mission:**

1. Realizing the quality education, character and inclusive with the support of professional human resources
2. Realizing the education for all (inclusive)

#### Goals:

1. The availability of character and quality education service , character and with the support of professional human resources
2. The availability of inclusive education service in the formal and non-formal education.

#### 3. Task and Function of Organization Elements

##### 1) Department Head:

Task: Has obligation in organizing the Government affairs in education sector.

Function: coordination of policy formulation, the implementation of government affairs and public service, fostering and execution of duties, secretarial management which include: general planning, officialdom, financial, evaluation and reporting; supervision, evaluation control and reports in the education sector.

##### 2) Secretariat:

Task: helping the head of Department in formulating policies, coordinate, nurture, and control the activities of planning, execution, control, monitoring, evaluation and reporting of public sector, equipment, officialdom, and financial.

Function: do the preparation of coordination material, data processing and preparation of the work programs in the

Department field; preparation of administrative materials, accounting and financial reporting; management of administrative personnel; management of correspondence, manuscripts, archives, Office supplies, household, travel agency, public relation and Protocol; and preparation of report creation and implementation evaluation of the Department work programs.

Secretariat consists of 1) General and Staffing Sub-Section; 2) Finance Sub-Section; and 3) Planning, Evaluation and Reporting Sub-Section.

3) Sector of Basic Education Construction  
(BidangPembinaanPendidikanDasar):

Task: helping the head of Department in formulating policies, coordinate, develop, monitor and control the programs of basic education construction sector.

Function: implementation of policies and prepare material for coordination of the work programs; program planning activities, the preparation of technical instructions and manuscript; coordination, development and facilitation work program; the construction, supervision and control of the work program; and the implementation of monitoring, evaluation, and reporting of the work program in the sector of basic education construction.

Sector of Basic Education Construction consists of 1) Section of Curriculum and Elementary School Assessment; 2) Section of Institutional and Elementary School Facilities and Infrastructure; and 3) Section of Elementary School Student.

4) Sector of Junior High School Construction (Bidang Pembinaan Sekolah Menengah Pertama):

Task: helping the head of Department in formulating policies, coordinate, develop, monitor and control the programs of junior high school construction sector.

Function: implementation of policies and prepare material for coordination of the work programs; program planning activities, the preparation of technical instructions and manuscript; coordination, development and facilitation work program; the construction, supervision and control of the work program; and the implementation of monitoring, evaluation, and reporting of the work program in the sector of junior high school construction.

Sector of Junior High School Construction consists of 1) Section of Curriculum and Junior High School Assessment; 2) Section of Institutional and Junior High School Facilities and Infrastructure; and 3) Section of Junior High School Student.

5) Sector of Non-Formal Education and Early Childhood Education(BidangPendidikan Non Formal danPendidikanAnakUsiaDini):

Task: helping the head of Department in formulating policies, coordinate, develop, monitor and control the programs of the sector of Sector of non-formal education and early childhood education

Function: implementation of policies and prepare material for coordination of the work programs; program planning activities, the preparation of technical instructions and manuscript; coordination, development and facilitation work program; the construction, supervision and control of the work program; and the implementation of monitoring, evaluation, and reporting of the work program in the Sector of non-formal education and early childhood education.

Sector of Non-Formal Education and Early Childhood Education consists of 1) Section of Community Education and Equality; 2) Section of Early Childhood Education; and 3) Section of Educational Institution Skills.

6) Sector of Educators, Educational Personnel, Data and Information System (BidangPendidik, TenagaKependidikan, Data danSistemInformasi):

Task: helping the head of Department in formulating policies, coordinate, develop, monitor and control the

programs of educators, educational personnel, data and information system sector.

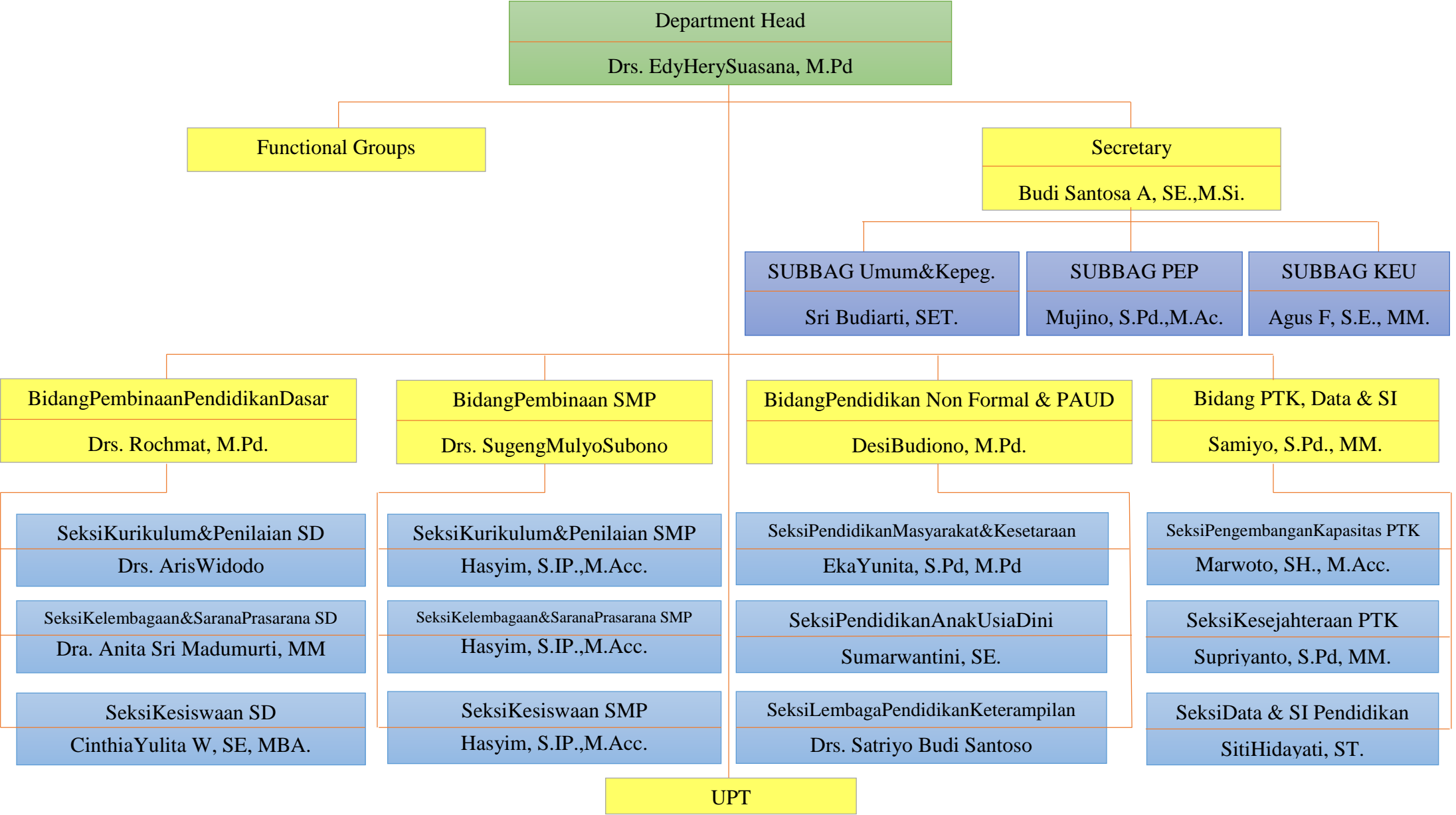
Function: implementation of policies and prepare material for coordination of the work programs; program planning activities, the preparation of technical instructions and manuscript; coordination, development and facilitation work program; the construction, supervision and control of the work program; and the implementation of monitoring, evaluation, and reporting of the work program in the sector of educators, educational personnel, data and information system.

Sector of Educators, Educational Personnel, Data and Information System consist of 1) Section of Personnel Education Capacity Development; 2) Section of Personnel Education Welfare; and 3) Section of Data and Education Information System.

- 7) Integrated Service Unit (UPT)
- 8) Functional Groups

#### 4. Organization Structure of Education Department

Figure 2.1.1 Structure Organization of Education Department



## 5. Education Information in Yogyakarta City

Yogyakarta City has 937 institutions of education units, from the early childhood education until the senior high school that scattered in 14 sub-districts. The following number of units of education in Yogyakarta:

Table 2.1.1 Data on the Number of Education Units in Yogyakarta City

No.	Sub-District	The Number of Education Units					Total
		PAUD	SD/MI	SMP/MTs	SMA/MA	SMK	
1	Mantrijeron	43	11	6	3	3	66
2	Kraton	43	5	2	0	1	51
3	Mergangsan	48	13	5	2	3	71
4	Umbulharjo	134	24	10	7	11	186
5	Kotagede	42	18	4	3	0	67
6	Gondokusuman	98	18	11	11	4	142
7	Dannurejan	25	6	3	0	1	35
8	Pakualaman	12	5	1	0	0	18
9	Gondomanan	14	9	2	4	1	30
10	Ngampilan	24	9	2	3	0	38
11	Wirobrajan	38	12	4	5	1	60
12	GedongTengen	14	6	4	2	1	27
13	Jetis	52	17	7	4	4	84
14	Tegalrejo	3	15	4	4	1	62



<b>TOTAL</b>	<b>625</b>	<b>168</b>	<b>65</b>	<b>48</b>	<b>31</b>	<b>937</b>
--------------	------------	------------	-----------	-----------	-----------	------------

*Source: Information Education Book 2016.*

#### 6. The school that implement the inclusive education program

Table 2.1.2 the List of School that Implement the Inclusive Education Program

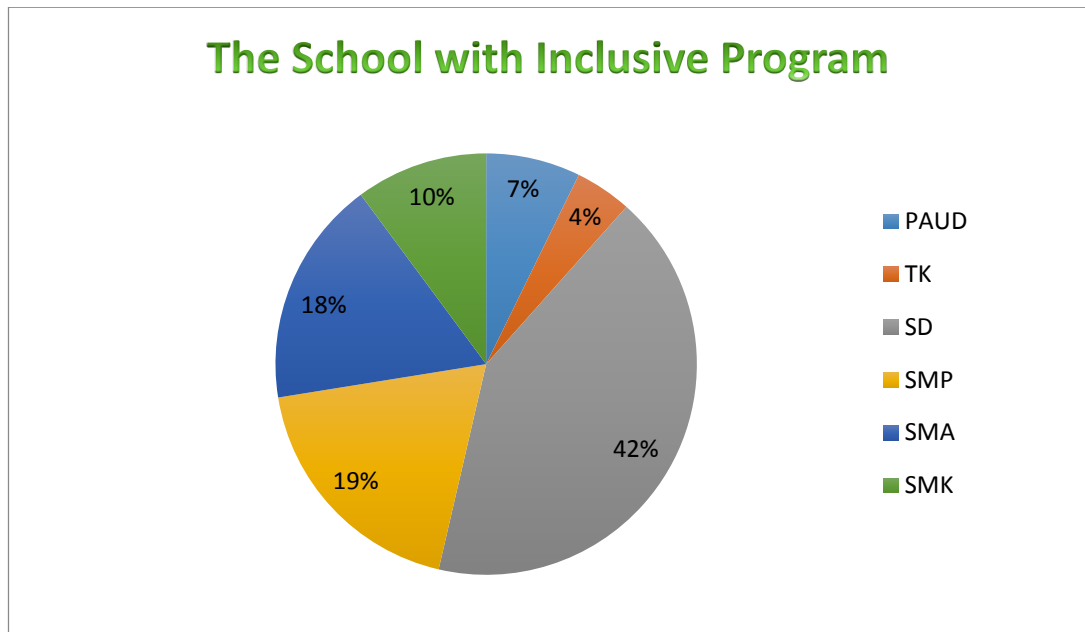
No.	Level	Total	School	Status
1	PAUD	5	PAUD Among SiwiUmbulharjo	Private
2			PAUD Bunga Indah 09	
3			PAUD Ceria 21 Gedongtengen	
4			PAUD Tiara Surya Tegalrejo	
5			PAUD Among PutroTegalrejo	
6	TK	3	TK Pedagogia	Private
7			TK Islam PelangiAnak Indonesia	
8			TK ABA Nitikan	
9	SD	29	SD Minggiran	Public
10			SDN Tamansari 1	
11			SDN Ungaran 1	
12			SDN Bangunrejo 2	
13			SDN Giwangan	
14			SDN Karanganyar	
15			SDN Panembahan	
16			SDN Pakel	
17			SDN Mendungan	

18			SDN Wirosaban	
19			SDN Tegalpanggung	
20			SDN Jetisharjo	
21			SDN Surokarsan	
22			SDN Balirejo	
23			SD Jetis 1	
24			SDN Blunyahrejo	
25			SDN Baciro	
26			SD MuhammadiyahPakel	Private
27			SD Tumbuh	
28			SD Taman Muda IP	
29			SD BopkriBintaran	
30			SD MuhammadiyahPurbayan	
31			SD MuhammadiyahNotoprajan	
32			SD Intis School	
33			SD Juara	
34			SD Muhammadiyahsapen 1	
35			SD MuhammadiyahDanunegaran	
36			SD MuhammadiyahMiliran	
37			SD Muhammadiyah Sagan	
38	SMP	13	SMP N 2 Yogyakarta	Public
39			SMP N 1 Yogyakarta	
40			SMP N 13 Yogyakarta	
41			SMP N 5 Yogyakarta	
42			SMP N 4 Yogyakarta	
43			SMP N 15 Yogyakarta	

44			SMP Muhammadiyah 2	Private
45			SMP Muhammadiyah 7	
46			SMP Muhammadiyah 9	
47			SMP Taman Dewasa IP	
48			SMP Perintis	
49			SMP Tumbuh	
50			SMP Muhammadiyah 10	
51	SMA	12	SMA N 11 Yogyakarta	Public
52			SMAN 8 Yogyakarta	
53			SMAN 3 Yogyakarta	
54			SMAN 4 Yogyakarta	
55			SMAN 5 Yogyakarta	
56			SMAN 1 Yogyakarta	
57			SMA Pembangunan	Private
58			SMA Taman Madya IP	
59			SMA Muhammadiyah 4	
60			SMA Muhammadiyah 7	
61			SMA Stella Duce 2	
62			SMA BOPKRI 1	
63	SMK	7	SMK N 5 Yogyakarta	Public
64			SMK N 6 Yogyakarta	
65			SMK Muhammadiyah 2	Private
66			SMK Muhammadiyah 3	
67			SMK Muhammadiyah 4	
68			SMK Pembangunan	
69			SMK Bopkri 2	

Source: Information Education Book 2016.

Figure 2.1.2 the Percentage of schools that implement the Inclusive Education



*Source: Information Education Book 2016.*

## B. SD NegeriTamansari 1 Yogyakarta

### a. Profile of SD NegeriTamansari 1 Yogyakarta

SD NegeriTamansari 1 Yogyakarta established since 1916 which is located in Jl. Kapten P. Tendean 43, Wirobrajan, Yogyakarta 55252. SD NegeriTamansari 1 Yogyakarta is the school that chosen by Education Department of DIY Province as the school that implement the inclusive school. The Accredited of SD NegeriTamansari 1 Yogyakarta is A.

### b. Vision and Mission of SD NegeriTamansari 1 Yogyakarta

Vision:

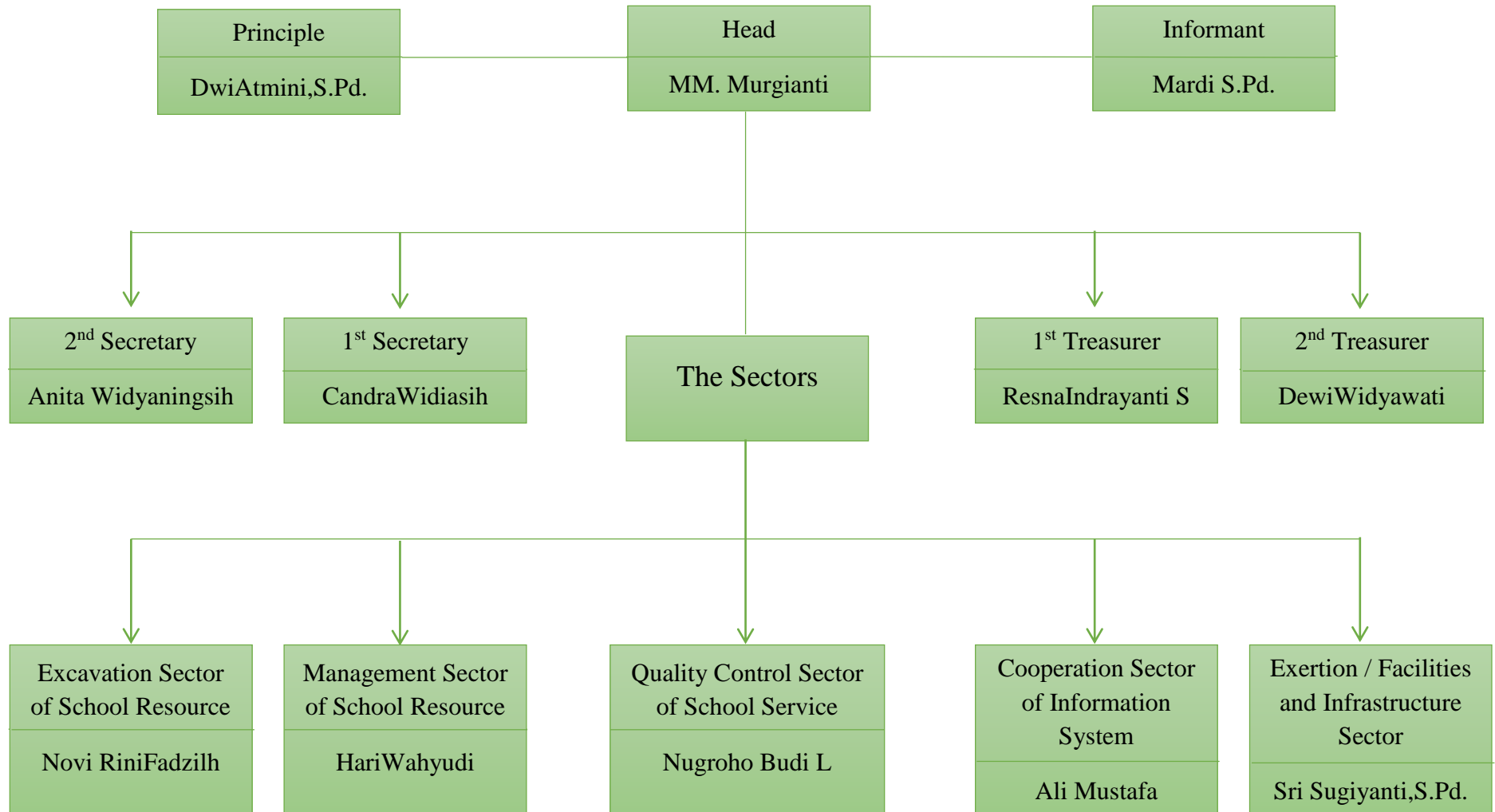
Excellled in Achievement, has the ability, skills, environmentally culture sublime (BerwawasanLingkungan Yang BerbudayaLuhur).

Mission:

1. Creating the conducive lessons;
2. Develop a religious personality;
3. Develop the potential of every individual;
4. Provide life skills;
5. Implement the 9 K; ketertiban (order), keamanan (security), kekeluargaan (kinship), keindahan (beauty), kebersihan (cleanness), kesehatan (health), keterbukaan (openness), dan keteladanan (exemplary).

c. Organization Structure of SD Negeri Tamansari 1 Yogyakarta

Figure 2.2.1 Structure Organization of SD NegeriTamansari 1 Yogyakarta from 2014-2018



### **C. SD NegeriBangunrejo 2 Yogyakarta**

#### **a. Profile of SD NegeriBangunrejo 2 Yogyakarta**

SD NegeriBangunrejo 2 is the primary school which gives educational services for all children, including children with special need to be able to learn together. The school is situated on the banks of the river Winongo, at Bangunrejo RT (neighborhood). 56 RW (hamlet). 13 ", Kricak, Tegalrejo sub-district, Yogyakarta 55242 with the occupies a land areas are 1.183 m<sup>2</sup>. The school contact is (0274) 557124 and the email is sdbangunrejo2@yahoo.co.id.

#### **b. Vision and Mission of SD NegeriBangunrejo 2 Yogyakarta**

Vision:

The formation of intelligent student, skilled, and virtuous.

Mission:

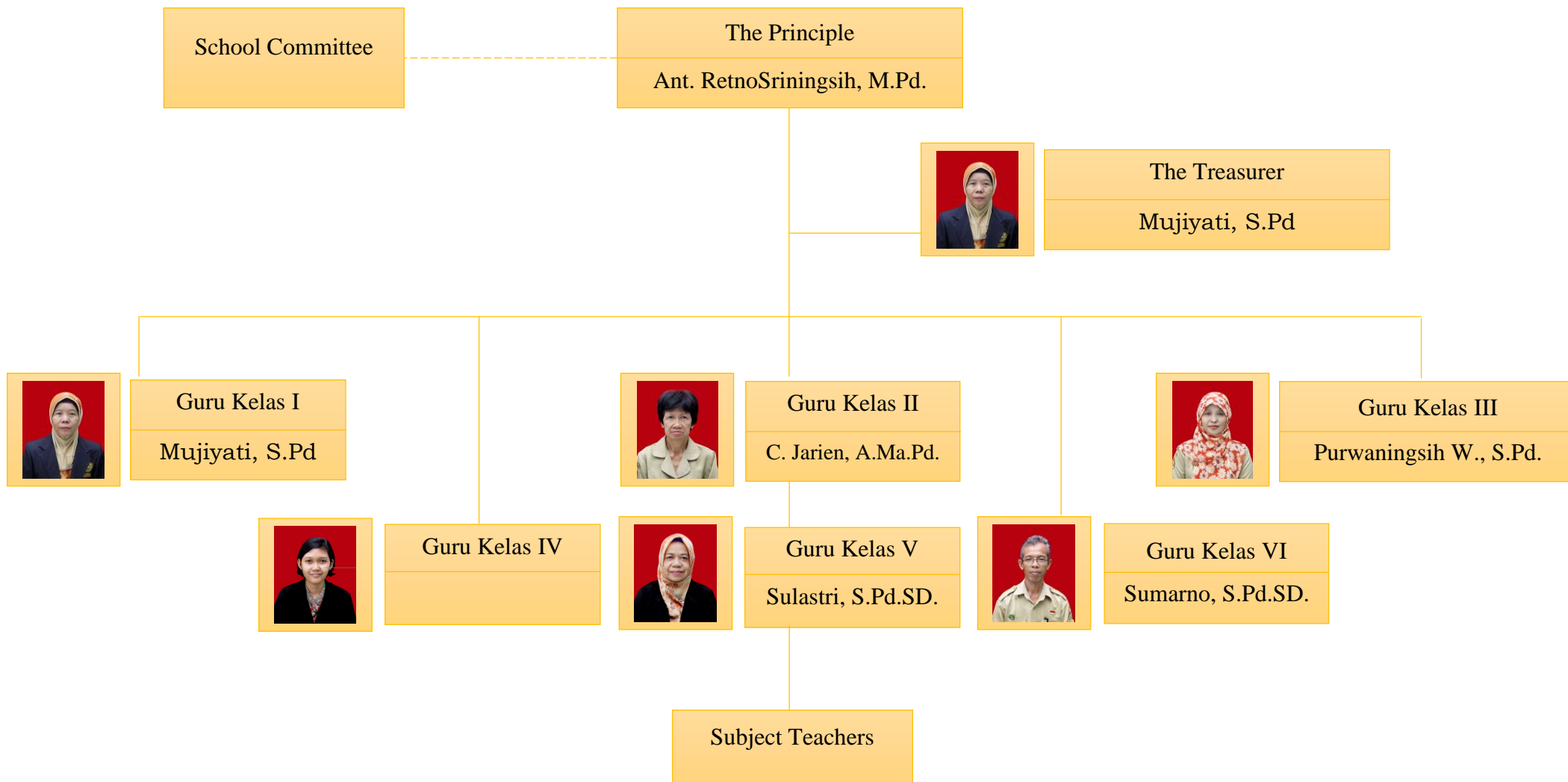
Create adisciplined learning atmosphere and training skills as continuously, as well as fostering students to have a morals and piety.

#### **c. Educational Goals of SD NegeriBangunrejo 2 Yogyakarta**

1. Can practice religious teachings and activity as the result of the learning process;
2. Get an academic and non-academic achievement of at least in the district or city level;
3. Mastering the basic of sciences and technology as a preparation to proceed to a higher school and become a school of community interest.

d. Organization Structure of SD Negeri Bangunrejo 2 Yogyakarta

Figure 2.3.1 Structure Organization of SD Negeri Bangunrejo 2 Yogyakarta





#### **D. SMP Negeri 15 Yogyakarta**

##### **a. Profile of SMP Negeri 15 Yogyakarta**

The SMPNegeri 15 Yogyakarta located in village of TegalLempuyangan, which located in the south of Lempuyangan station. The location of SMP Negeri 15 Yogyakarta is in Jl. TegalLempuyangan 61, Bausasran, Danurejan Sub-district, Yogyakarta City 55211.

The areas of SMP Negeri 15 Yogyakarta approximately are 12.703 m<sup>2</sup>. SMP Negeri 15 Yogyakarta located in the center of the village which is very conducive to the learning process. This is because so far away from the crowds, a lot of trees and protected by the fences and high walls, thus creating a comfort, secure, and tranquility environment. The school contact (0274) 512912 / 544904 and email is [smpnegeri15yk@yahoo.co.id](mailto:smpnegeri15yk@yahoo.co.id).

##### **b. Vision and Mission of SMP Negeri 15 Yogyakarta**

###### **Vision:**

The establishment of school culture based on faith and science quality, friendly, responsive, and environmentally.

###### **Mission:**

1. Develop the appreciation of religious affiliation;
2. Develop a vision of quality and excellence school;
3. Develop a sense of love in sports, arts, and cultures to achieve a better performance;
4. Develop entrepreneurial spirit and self-reliance in facing a global competition;

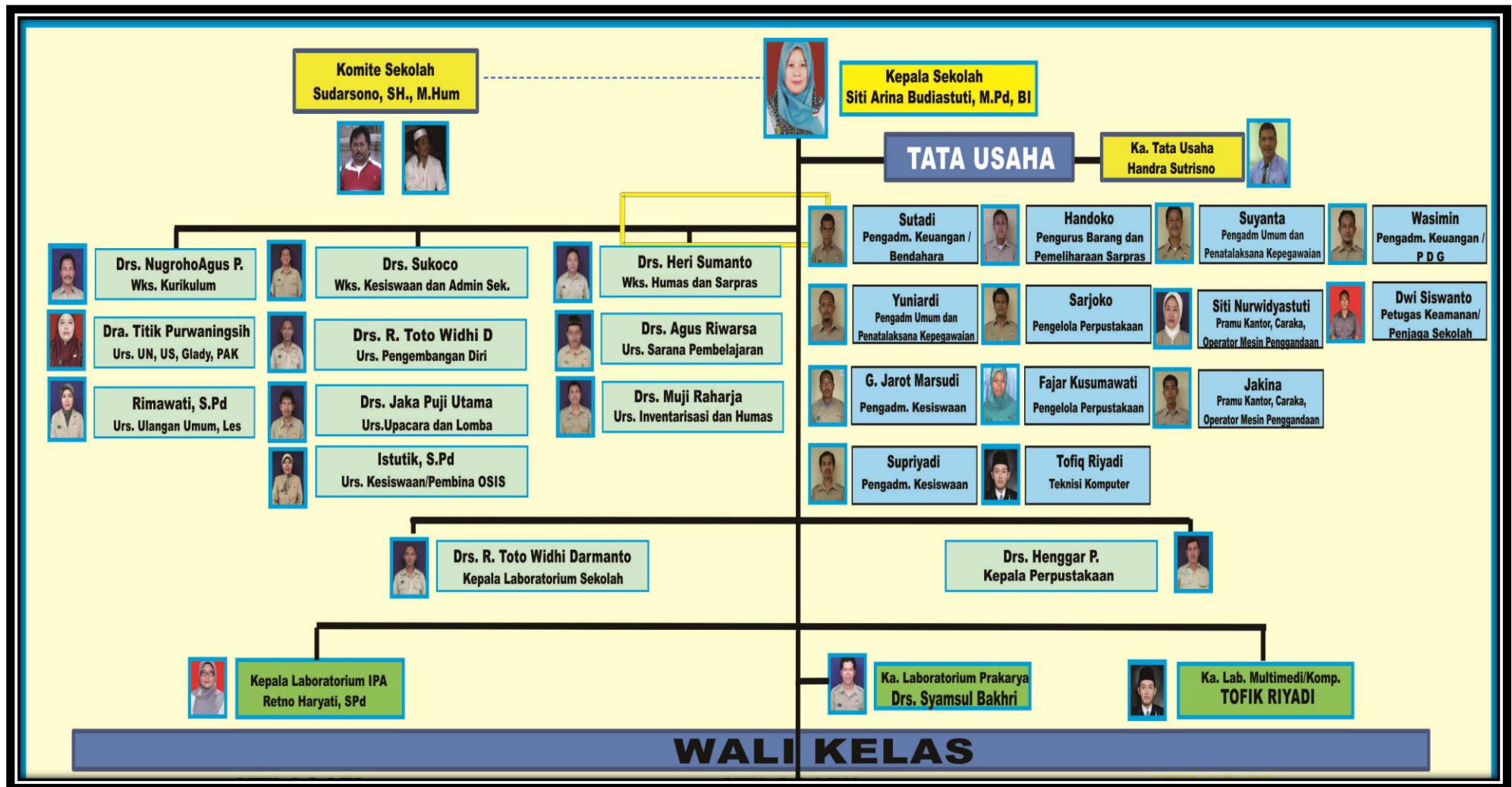
5. Improve the quality of media, facilities and infrastructure also the student activities in order to improve the quality of education;
6. Balancing the specific needs of students;
7. Creating the school environment that clean, comfort, and homely.

c. Educational Goals of SMP Negeri 15 Yogyakarta

Laying the foundation of intelligence, personality, knowledge, noble character, skills and has responsibility for environmental sustainability.

d. Organization Structure of SMP Negeri 15 Yogyakarta

Figure 2.4.1 Structure Organization of SMP Negeri 15 Yogyakarta



## **E. SMA Negeri 4 Yogyakarta**

### **a. Profile of SMA Negeri 4 Yogyakarta**

On January 16<sup>th</sup>1950, SMA Negeri 4 Yogyakarta early establishment named SMA Perdjoangan. It is suitable with the Decree of the Ministry of Education, Teaching and Culture of the Indonesian Republic No. 551/B. In year 1952 by the Decree of the Ministry of Education, Teaching and Culture No. 3418/B on August 8, 1952, SMA Perdjoangan Yogyakarta changed its name to SMA bagian B nomor II or SMA BNegeri. Further, in 1997 the SMA B Negeri changed its name to SMA Negeri 4 Yogyakarta.

SMA Negeri 4 Yogyakarta located in Jl. Magelang, Karangwaru Lor, Tegalrejo, Yogyakarta 55241. The occupies a land areas are 6308 m<sup>2</sup>. The SMA Negeri 4 Yogyakarta is accredited A. The school contact 0274513245 and email [info@patbhe-jogja.sch.id](mailto:info@patbhe-jogja.sch.id).

### **b. Vision and Mission of SMA Negeri 4 Yogyakarta**

#### **Vision:**

Excellence in Imtaq (faith and piety), technology science, culture and sports.

#### **Mission:**

1. Increase the appreciation and practice of religion;
2. Develop the habit of reading, research and writing;
3. Improve the achievement of academic, culture and sports in national and global level;

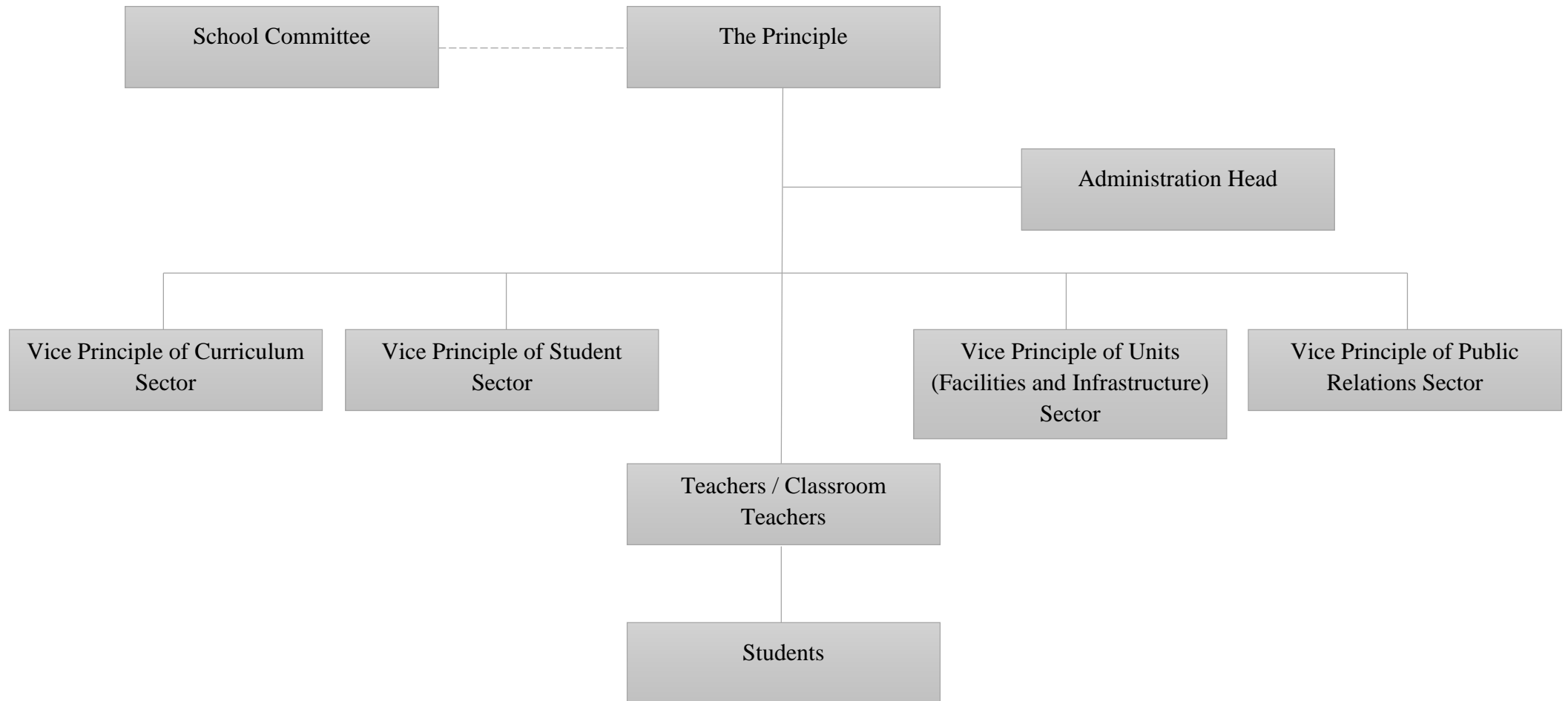
4. Implement the 5 S: Senyum (smile), Salam (regard), Sapa (greet), Sopan (polite) dan Santun (courtesy);
5. Develop local wisdom in school;
6. Optimize the role of school committee, society and institution in the success of school programs.

c. Educational Goals

1. Develop students potential to be:
  - a) Faith;
  - b) Creative;
  - c) Independent;
  - d) Responsive;
  - e) Competent;
  - f) Healthy;
  - g) Smart.
2. Improve the intelligence, knowledge, personality, noble characteristic, and independent living skills to follow the higher education.

d. Organization Structure SMA Negeri 4 Yogyakarta

Figure 2.5.1 Structure Organization of SMA Negeri 4 Yogyakarta



## **F. SMK BOPKRI 2 Yogyakarta**

### **a. Profile of SMK BOPKRI 2 Yogyakarta**

SMK BOPKRI 2 Yogyakarta is the private school which located in Jl. Bintaran Tengah No.6, Mergangsan, Yogyakarta 55151. According to Decree of Establishment Permits 41.1-10.03, the SMK BOPKRI 2 Yogyakarta operates on May 11<sup>th</sup>, 1967 and occupies a land area of 1400 m<sup>2</sup>. On 2009 the SMK BOPKRI 2 Yogyakarta accredited A, that has two majors such as, Caterers (JasaBoga) and Fashion Boutiques (BusanaButik) which also got an accredited is A. the school contact 0274376563 and email smk\_boda@yahoo.com.

### **b. Vision and Mission of SMK BOPKRI 2 Yogyakarta**

#### **Vision:**

1. Being a professional vocational school in Daerah Istimewa Yogyakarta;
2. To educate students to be independent and competitive based on love.

#### **Mission:**

Implement the education of Vocational School in Daerah Istimewa Yogyakarta as professionally to create the intelligent and characterless student.

c. Educational Goals of SMK BOPKRI 2 Yogyakarta

1. Trying to make education and training education qualified;
2. Prepare the students to become professional's human resource and has ability to be independent in accordance with their competency;
3. Equip the students to have a disciplinary and persistence in adapting and competence in the work level in accordance with their expertise;
4. Equip the students with the knowledge of science, technology, social, culture and arts to be able being independent or through the higher education.

d. Organization Structure of SMK BOPKRI 2 Yogyakarta



Figure 2.6.1 Structure Organization of SMK BOPKRI 2 Yogyakarta

