

## Lampiran 4. Harga Photovoltaic

The screenshot displays the Alibaba.com product page for 'Gold Supplier Solarenergy 300W Mono Solar Panels Use For Commercial'. The page includes the following elements:

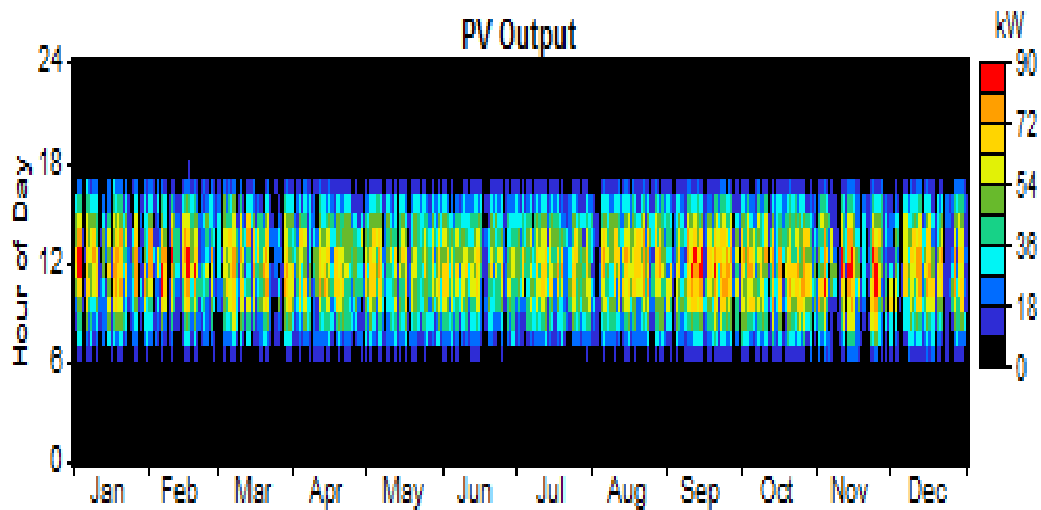
- Product Title:** Gold Supplier Solarenergy 300W Mono Solar Panels Use For Commercial
- Discount:** Free Inspection
- FOB Reference Price:** [Get Latest Price](#)
- Promotion:** MEGA MARCH SOURCING. Place order now to enjoy up to US \$200 off! Promotion ends in 12d : 20h : 26m : 08s 3301 left!
- Price:** US \$0.4-0.56 / Watt | 310 Watt/Watts (Min. Order)
- Supply Ability:** 500 Milliwatt/Milliwatts per Year
- Port:** Ningbo
- Buttons:** Contact Supplier, Start Order
- Logos:** CE, ISO 9001, ISO 14001, IEC, PV EN 61215, ZOOM
- Share:** Facebook, Twitter, LinkedIn, Print
- Trade Assurance:** 5 YRS Zhejiang Perlight Solar Co., Ltd. China (Mainland) | Manufacturer, Trading Company. Transaction Level: 3 hearts.
- Top 3 Markets:**
  - Western Europe: 15.35%
  - Mid East: 12.88%
  - Eastern Europe: 11.50%
- Navigation:** Product Details, Company Profile, Transactions Overview, Report Suspicious Activity
- Right Sidebar:** Multi-Language Sites, Contact Supplier, Chat Now, My Cart, Browsing History, Message Center, Trade Manager, Our Product Range (SPECIAL OFFER)

**Lampiran 5.** Hasil Konfigurasi Komponen *Photovoltaic*

**PV**

Quantity	Value	Units
Rated capacity	91.3	kW
Mean output	14.6	kW
Mean output	350	kWh/d
Capacity factor	16.0	%
Total production	127,834	kWh/yr

Quantity	Value	Units
Minimum output	0.00	kW
Maximum output	89.2	kW
PV penetration	13.3	%
Hours of operation	4,383	hr/yr
Levelized cost	0.0319	\$/kWh

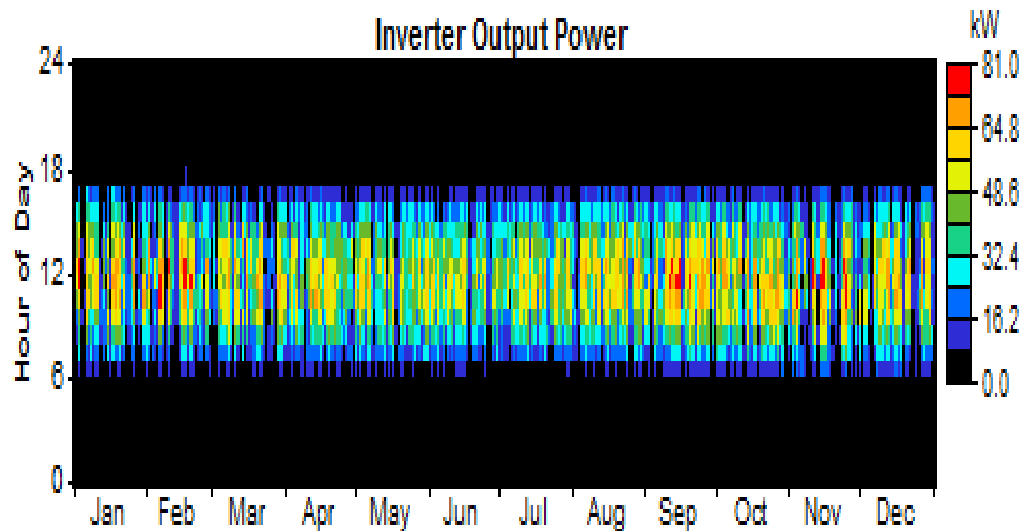


## Lampiran 6. Hasil Konfigurasi Komponen Konverter

### Converter

Quantity	Inverter	Rectifier	Units
Capacity	400	400	kW
Mean output	13	0	kW
Minimum output	0	0	kW
Maximum output	80	0	kW
Capacity factor	3.3	0.0	%

Quantity	Inverter	Rectifier	Units
Hours of operation	4,383	0	hrs/yr
Energy in	127,834	0	kWh/yr
Energy out	115,050	0	kWh/yr
Losses	12,784	0	kWh/yr



## Lampiran 7. Hasil Konfigurasi *Grid*

- Luar Waktu Beban Puncak

Rate: luar waktu beban puncak

Month	Energy Purchased	Energy Sold	Net Purchases	Peak Demand	Energy Charge	Demand Charge
	(kWh)	(kWh)	(kWh)	(kW)	(\$)	(\$)
Jan	58,032	176	57,856	257	4,424	0
Feb	50,625	112	50,513	263	3,870	0
Mar	61,139	72	61,067	298	4,690	0
Apr	56,883	109	56,774	275	4,353	0
May	56,252	121	56,132	250	4,301	0
Jun	58,556	115	58,441	318	4,480	0
Jul	57,745	133	57,612	309	4,413	0
Aug	61,410	97	61,313	333	4,704	0
Sep	56,191	170	56,021	269	4,284	0
Oct	57,623	183	57,440	258	4,391	0
Nov	54,688	174	54,514	262	4,167	0
Dec	59,297	146	59,151	302	4,529	0
Annual	688,441	1,608	686,833	333	52,608	0

- Waktu Beban Puncak

Rate: waktu beban puncak

Month	Energy Purchased	Energy Sold	Net Purchases	Peak Demand	Energy Charge	Demand Charge
	(kWh)	(kWh)	(kWh)	(kW)	(\$)	(\$)
Jan	13,374	0	13,374	208	1,538	0
Feb	11,612	0	11,612	206	1,335	0
Mar	13,596	0	13,596	182	1,564	0
Apr	12,945	0	12,945	199	1,489	0
May	13,041	0	13,041	184	1,500	0
Jun	12,751	0	12,751	201	1,466	0
Jul	13,241	0	13,241	192	1,523	0
Aug	13,918	0	13,918	201	1,601	0
Sep	13,053	0	13,053	182	1,501	0
Oct	12,703	0	12,703	209	1,461	0
Nov	12,764	0	12,764	192	1,468	0
Dec	12,877	0	12,877	188	1,481	0
Annual	155,876	0	155,876	209	17,926	0