

# **WOMEN AND MORAL DEGRADATION IN JAMRUD' S SONGS**



**Muria Endah Sokowati**  
Universitas Muhammadiyah Yogyakarta  
Indonesia

# JAMRUD

- One of the most famous rock bands in Indonesia since 1994 to 2004 because of its controversies.
- This band used the vulgar lyric in their songs, which were successful in becoming hits.
- They often took relation between men and women as main theme of their songs.



# SOCIAL CRITICISM ... ???

- In general, *Jamrud*'s lyrics criticized modernity and its consequences.
- Jamrud used their songs as the tools for voicing their thoughtfulness of the moral degradation as an effect of modernity.



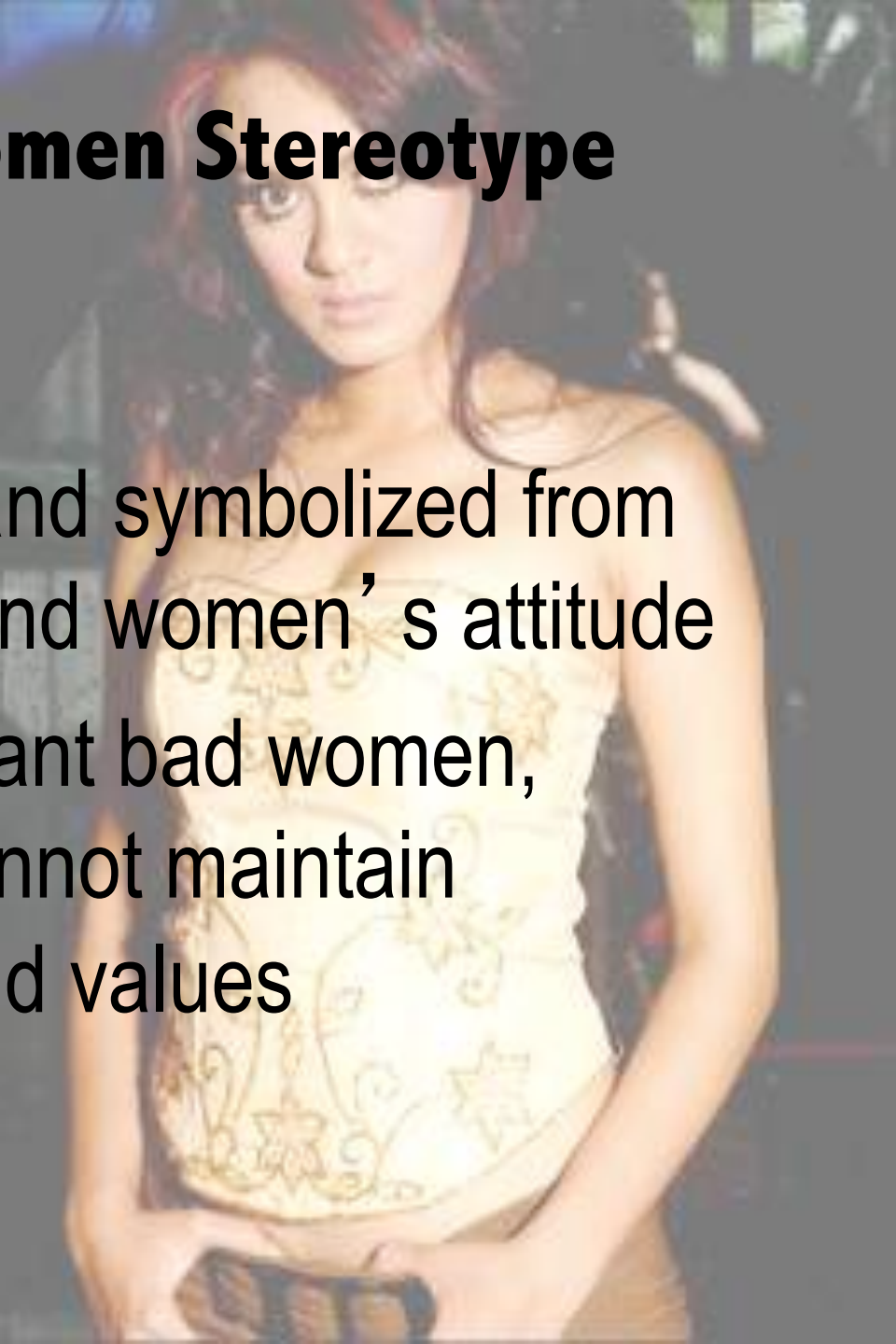
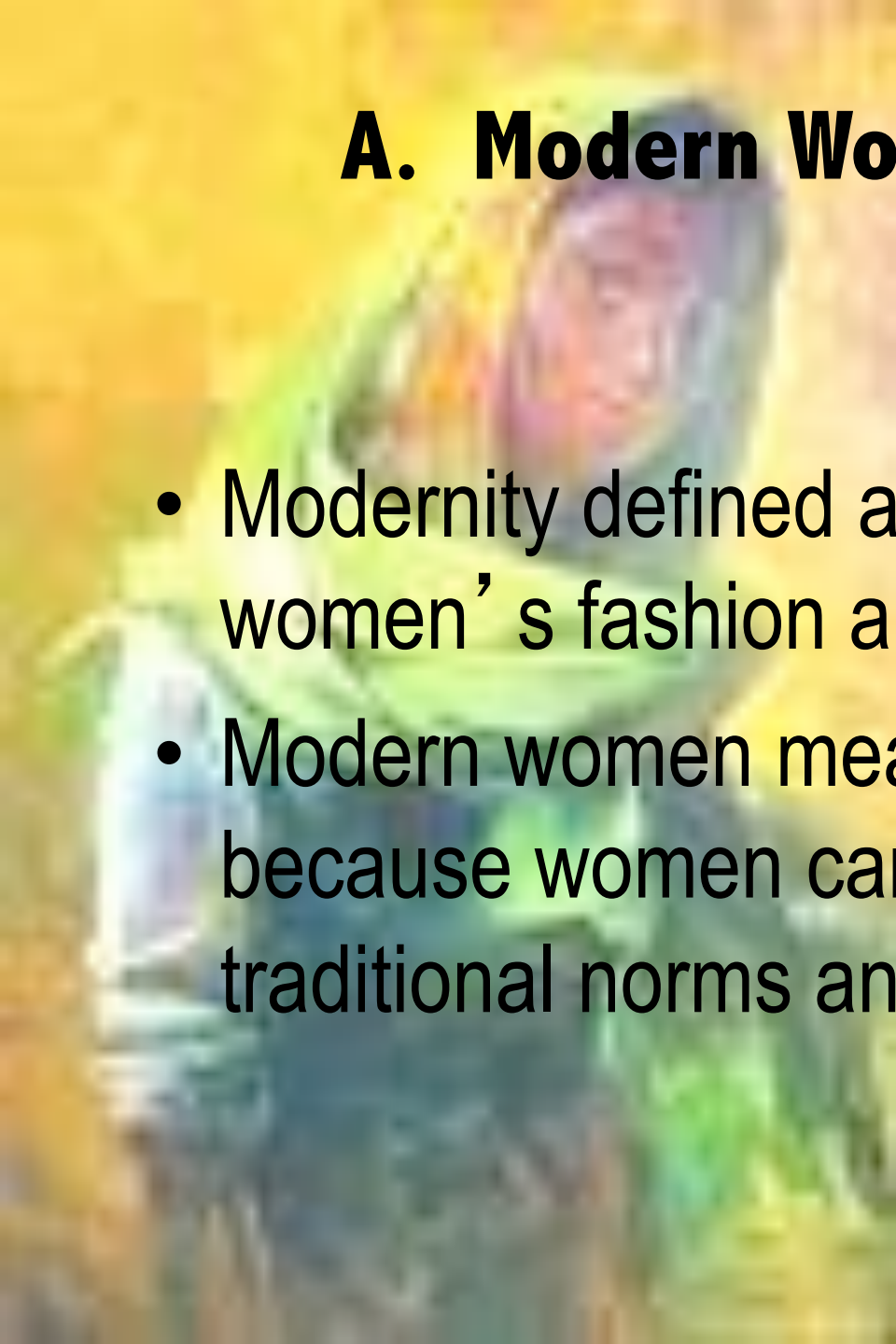


# BLAMING WOMEN

- *Jamrud* used women as the symbol of morality.
- Morality was defined from the women acted and dressed
  - *Jamrud* often used women to symbolize the negative effect of modernity
- The moral degradation among young people was caused by women who tend to be modern.

## A. Modern Women Stereotype

- Modernity defined and symbolized from women's fashion and women's attitude
- Modern women meant bad women, because women cannot maintain traditional norms and values



DISCOTHEQUE

# 'PUTRI'

(GIRL/IT CAN REFER TO THE NAME OF A GIRL)

Putri, you should just stay at home  
Doing your homework, not in **DISCOTHEQUE**

You tried all **USA STYLE**,  
from **RED LABEL** to **NO BRA**

You behaved as if you're in **USA**, and you were proud of it

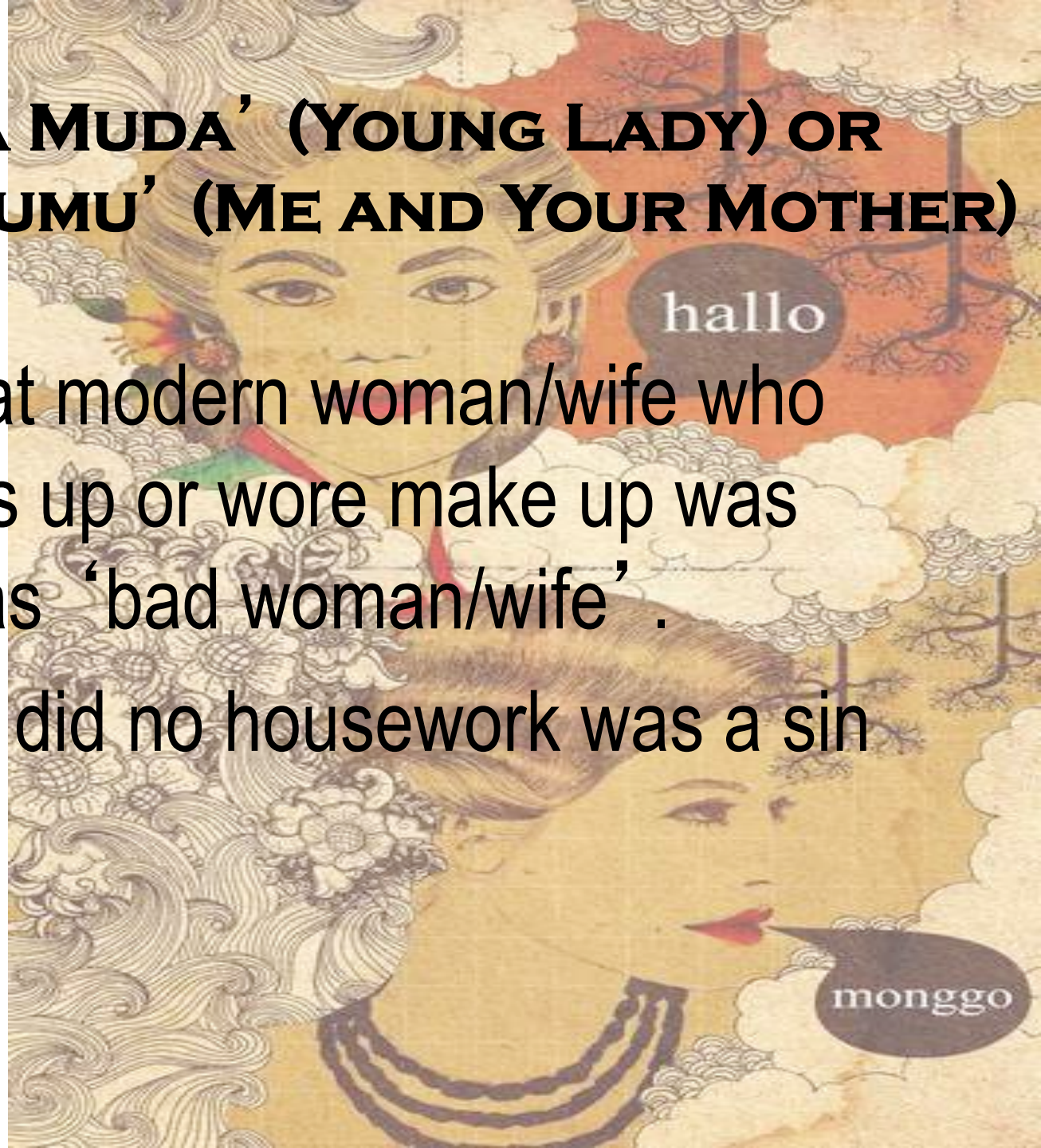
Putri, unfortunately..... you **freed your body**


Just to be called **a sexy girl...**



# **‘NYONYA MUDA’ (YOUNG LADY) OR ‘AKU DAN IBUMU’ (ME AND YOUR MOTHER)**

- Stressing that modern woman/wife who liked to dress up or wore make up was considered as ‘bad woman/wife’.
- Women who did no housework was a sin



A scroll of aged parchment with a textured, yellowish-brown surface and irregular, torn edges. The scroll is unrolled in the center, with the text printed on it. The text is in a bold, black, sans-serif font. The scroll is set against a plain white background.

**A mom who won't afraid  
breaking her nails  
When she washes your cloths  
Or cleaning your body**

**L  
Y  
R  
I  
C**



L

Y

R

I

C

A fop young lady **spent two hours**  
**sitting in front of mirror**

With the driver, she went to the doctor  
to do **plastic surgery**

Her husband left her cause he just felt  
like live with '**a Barbie doll**'



## **B. Modern Women Were The Cause of Sexual Act Done by Men**

- Most of *Jamrud*'s songs expressed how women were often considered as the cause of the sexual act done by men, such as rape or sexual harassment,

# 'OTAK KOTOR' (DIRTY MIND)

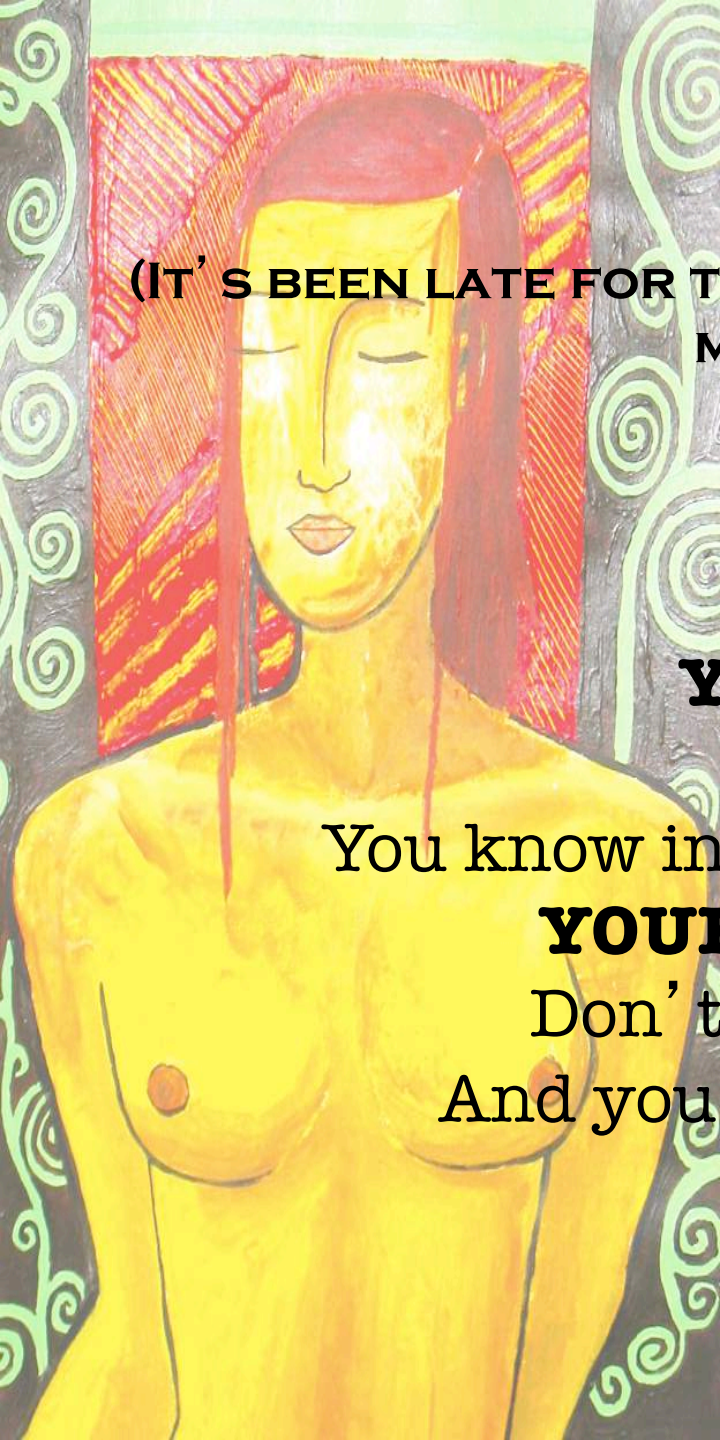
I got a headache  
watching your style,  
drive me to have dirty mind  
Don't you think  
how **your nearly naked cloths,**  
**had intense my passion**  
And I can't stand it anymore





# 'TELAT 3 BULAN'

(IT'S BEEN LATE FOR THREE MONTHS, CONNOTED TO THE LATE OF MENSTRUAL PERIOD OR EARLY PREGNANCY)



Friday night I picked you up,  
**YOUR MINI SKIRT WELCOMING**

Then, we went to the beach,  
You know in the beach, the wind blew strongly  
**YOUR SKIRT SWUNG UP AND DOWN**

Don't blame me if I wanted to see inside  
And you didn't refuse when I flattered you  
Then we rolled over in the sand



## C. Women's Body And Sexuality

- Some lyrics mentioned women's body vulgarly.
- Women's body was assumed as the cause of trouble



# TROUBLE SHANTY



But, I have bad luck,  
For having a sexy girlfriend like Shanty  
Which makes me raw boned  
It's difficult to sleep, cause I'm thinking  
dirty  
Thinking of **your body, thigh, breast,**  
And your smile

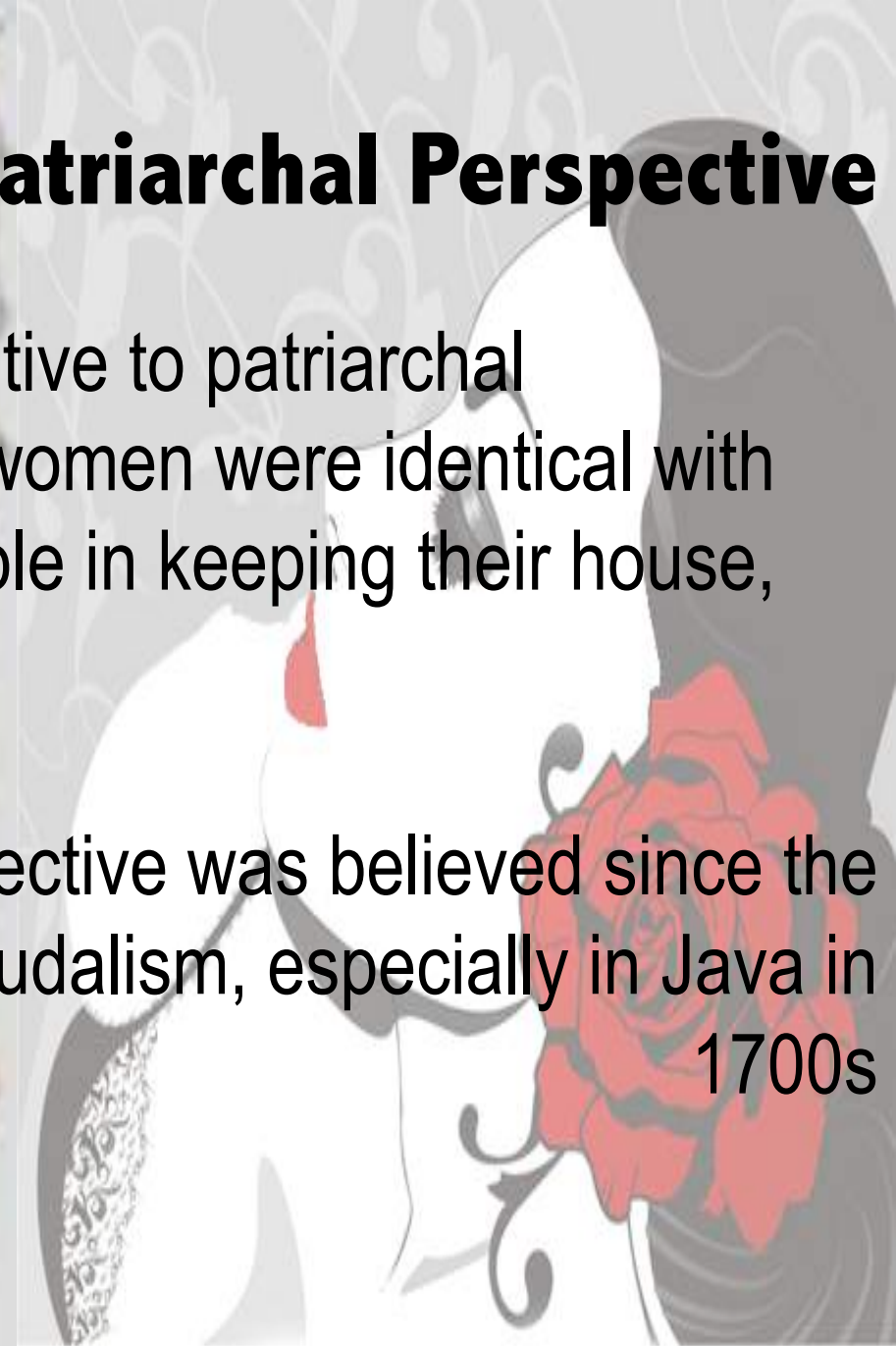
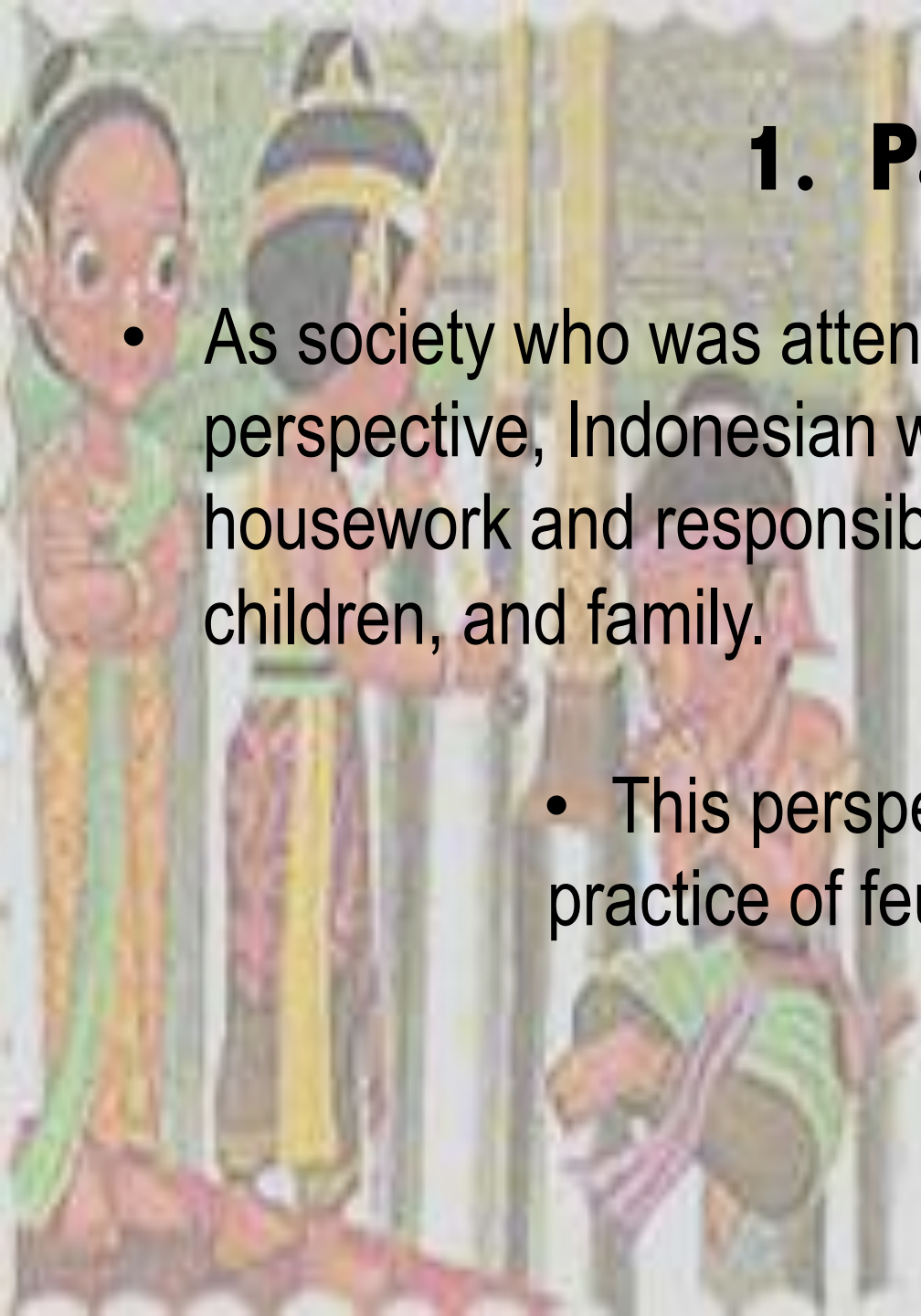


# GENDER IDEOLOGY

- Women were constructed as the symbol of the moral degradation caused by modernity.
- Women become signifiers of the good or bad of the society.
- This point of view related to cultural and social values believed by society in Indonesia

# 1. Patriarchal Perspective

- As society who was attentive to patriarchal perspective, Indonesian women were identical with housework and responsible in keeping their house, children, and family.
- This perspective was believed since the practice of feudalism, especially in Java in 1700s





## 2. As Colonized State

- The practice of colonization implicated on division of women and men's roles.
- Women's existence at home meant that they had to preserve their culture and tradition from the intrusion of western colonization.
- Women had passive and symbolic roles in protecting the nation as the mother of nation, that's why modern women can be connoted as women who had failed to keep their obligation.



### 3. Religion Interpretation

- The Division of Roles between men and women based on religion interpretation was implemented on the Marriage Regulation
- Marriage Regulation defined a husband was the chief of household, and a wife was a mother and a manager of household

## 4. New Order Regime Policy

- This perspective was reinforced by the rule governed by new order regime (1966-1998), called *Panca Dharma Wanita* (Five Women's Roles) that restricted women's roles just in domestic space.
- Ignoring these roles meant that she wasn't considered as good wife/ women



# PANCA DHARMA WANITA

Regulated a wife had to:

- (1) Support husband's job & duty
- (2) Give birth
- (3) Take care of children
- (4) Be a good housewife
- (5) Be a guardian for society.



# CONCLUSION

- Modernity had estranged women from their duty, that's why modernity would give bad consequences to women, which also effected to society. The higher women had the moral standard, the better to its society.
- *Jamrud*'s song had reflected how that ideology worked. The song lyrics had strengthened social construction, which had been widely taken for granted in Indonesian society, where women became symbolic border of goodness and badness of the society.