

LAMPIRAN

Lampiran 1.

Tests of Normality

Perlakuan	Kolmogorov-Smirnov(a)			Shapiro-Wilk		
	Statistic	df	Sig.	Statistic	df	Sig.
DZI kons 25%	.204	3	.	.993	3	.843
kons 50%	.269	3	.	.949	3	.567
kons 75%	.324	3	.	.878	3	.317
kons 100%	.178	3	.	1.000	3	.959
kontrol positif	.330	3	.	.867	3	.287

a Lilliefors Significance Correction

ANOVA

DZI

	Sum of Squares	df	Mean Square	F	Sig.
Between Groups	26.392	4	6.598	53.212	.000
Within Groups	1.240	10	.124		
Total	27.632	14			

Post Hoc Tests

Homogeneous Subsets

DZI

Tukey HSD

Perlakuan	N	Subset for alpha = .05	
		1	2
kons 25%	3	.5633	
kons 50%	3	.5733	
kons 75%	3	.6633	
kons 100%	3	.8967	
kontrol positif	3		3.9767
Sig.		.773	1.000

Means for groups in homogeneous subsets are displayed.

a Uses Harmonic Mean Sample Size = 3.000.

Multiple Comparisons

Dependent Variable: DZI

Tukey HSD

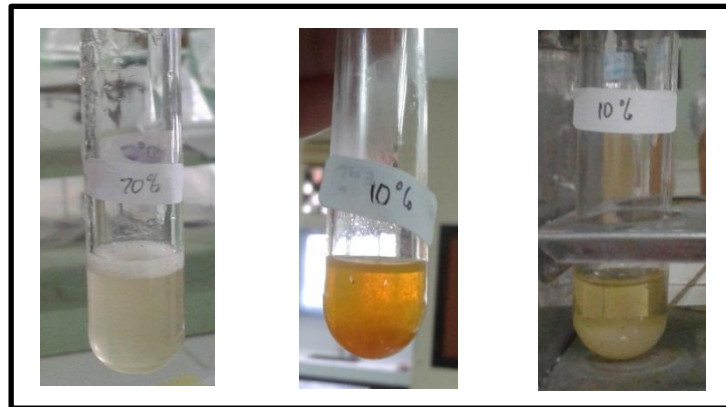
(I) Perlakuan	(J) Perlakuan	Mean Difference (I-J)	Std. Error	Sig.	95% Confidence Interval	
		Lower Bound	Upper Bound	Lower Bound	Upper Bound	Lower Bound
kons 25%	kons 50%	-.01000	.28751	1.000	-.9562	.9362
	kons 75%	-.10000	.28751	.996	-1.0462	.8462
	kons 100%	-.33333	.28751	.773	-1.2796	.6129
	kontrol positif	3.41333(*)	.28751	.000	-4.3596	-2.4671
kons 50%	kons 25%	.01000	.28751	1.000	-.9362	.9562
	kons 75%	-.09000	.28751	.998	-1.0362	.8562
	kons 100%	-.32333	.28751	.791	-1.2696	.6229
	kontrol positif	3.40333(*)	.28751	.000	-4.3496	-2.4571
kons 75%	kons 25%	.10000	.28751	.996	-.8462	1.0462
	kons 50%	.09000	.28751	.998	-.8562	1.0362
	kons 100%	-.23333	.28751	.921	-1.1796	.7129
	kontrol positif	3.31333(*)	.28751	.000	-4.2596	-2.3671
kons 100%	kons 25%	.33333	.28751	.773	-.6129	1.2796
	kons 50%	.32333	.28751	.791	-.6229	1.2696
	kons 75%	.23333	.28751	.921	-.7129	1.1796
	kontrol positif	3.08000(*)	.28751	.000	-4.0262	-2.1338
kontrol positif	kons 25%	3.41333(*)	.28751	.000	2.4671	4.3596
	kons 50%	3.40333(*)	.28751	.000	2.4571	4.3496
	kons 75%	3.31333(*)	.28751	.000	2.3671	4.2596
	kons 100%	3.08000(*)	.28751	.000	2.1338	4.0262

* The mean difference is significant at the .05 level.

Lampiran 2.

Foto Hasil Penelitian

- A. Hasil identifikasi kandungan senyawa flavonoid, alkaloid dan saponin ekstrak biji mahoni (*Swietenia mahagoni fructus*)

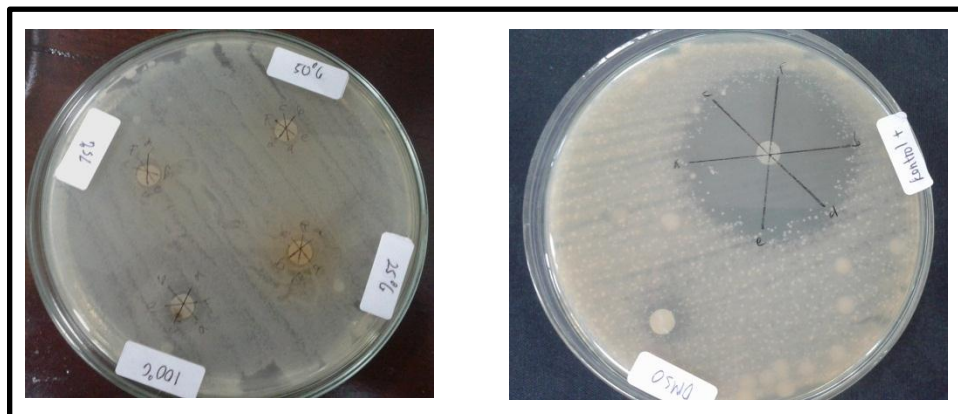


Hasil Uji
Saponin

Hasil Uji
Alkaloid

Hasil Uji
Flavonoid

- B. Hasil uji antibakteri ekstrak biji mahoni



Hasil Pengukuran DZI Ekstrak Etanol terhadap Bakteri
Shigella sp.