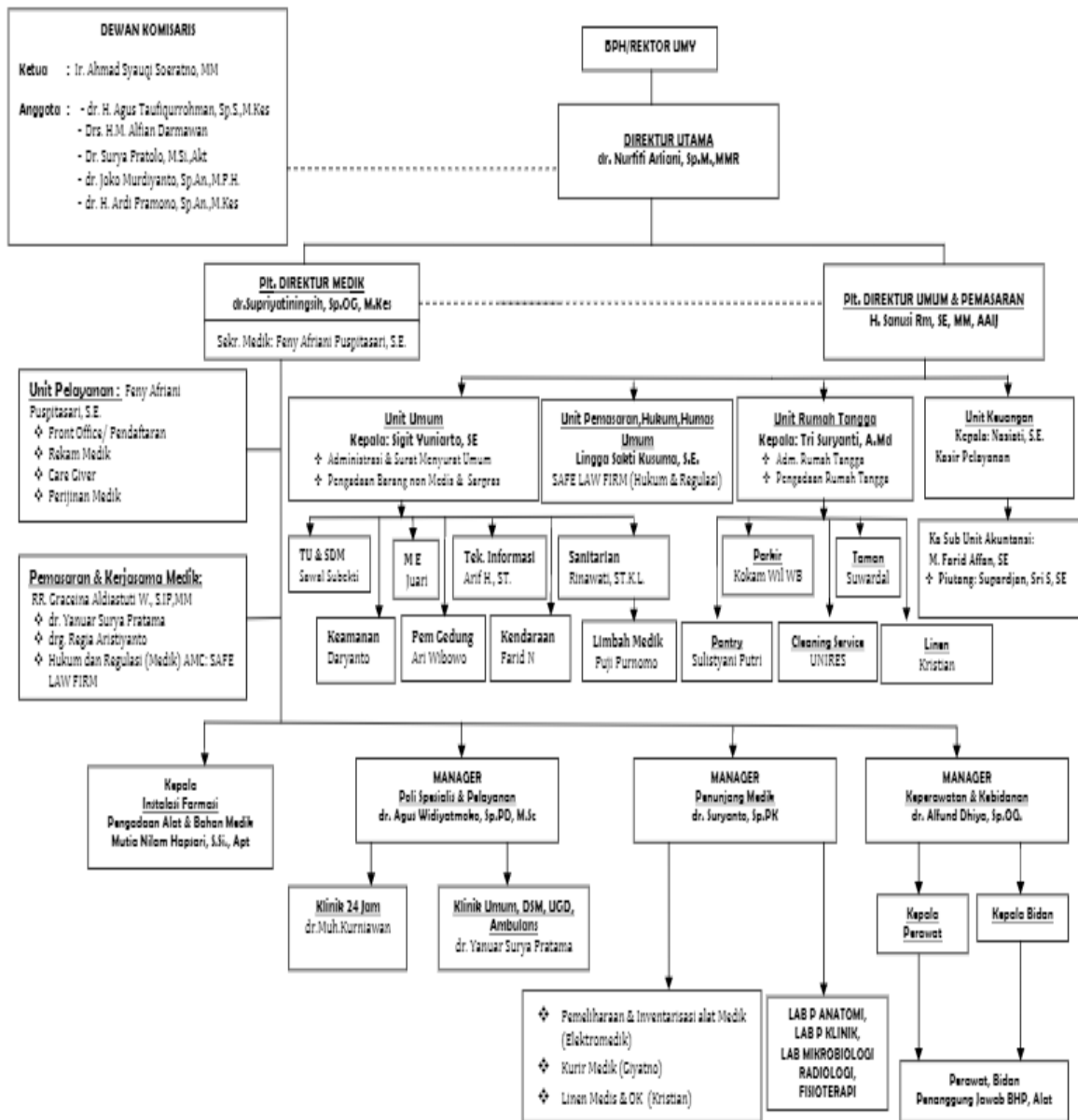


STRUKTUR ORGANISASI KLINIK UTAMA ASRI MEDICAL CENTER (AMC)



LAMPIRAN SPSS

Karakteristik Responden

Umur

	Frequency	Percent	Valid Percent	Cumulative Percent
Valid 20-25 Tahun	20	31.7	31.7	31.7
26-30 Tahun	27	42.9	42.9	74.6
> 30 Tahun	16	25.4	25.4	100.0
Total	63	100.0	100.0	

Jenis Kelamin

	Frequency	Percent	Valid Percent	Cumulative Percent
Valid Laki-Laki	18	28.6	28.6	28.6
Perempuan	45	71.4	71.4	100.0
Total	63	100.0	100.0	

Pendidikan

	Frequency	Percent	Valid Percent	Cumulative Percent
Valid SMA	25	39.7	39.7	39.7
D3	33	52.4	52.4	92.1
D4	1	1.6	1.6	93.7
S1	4	6.3	6.3	100.0
Total	63	100.0	100.0	

Lama Bekerja

	Frequency	Percent	Valid Percent	Cumulative Percent
Valid 1-5 Tahun	60	95.2	95.2	95.2
6-10 Tahun	3	4.8	4.8	100.0
Total	63	100.0	100.0	

Unit/Bagian

	Frequency	Percent	Valid Percent	Cumulative Percent
Satpam	6	9.5	9.5	9.5
Analisis	3	4.8	4.8	14.3
Radiologis	1	1.6	1.6	15.9
Perawat	15	23.8	23.8	39.7
Pantry	3	4.8	4.8	44.4
Farmasi	5	7.9	7.9	52.4
Kasir	3	4.8	4.8	57.1
Bidan	8	12.7	12.7	69.8
Valid Sanitarian	1	1.6	1.6	71.4
Sekretaris	2	3.2	3.2	74.6
Marketing	1	1.6	1.6	76.2
SDM	1	1.6	1.6	77.8
RM	6	9.5	9.5	87.3
Core Giver	2	3.2	3.2	90.5
ME	5	7.9	7.9	98.4
Properti	1	1.6	1.6	100.0
Total	63	100.0	100.0	

Status Pernikahan

	Frequency	Percent	Valid Percent	Cumulative Percent
Valid Menikah	39	61.9	61.9	61.9
Belum Menikah	24	38.1	38.1	100.0
Total	63	100.0	100.0	

Analisis Deskriptif

Kinerja Karyawan

Descriptive Statistics

	N	Minimum	Maximum	Mean		Std. Deviation
	Statistic	Statistic	Statistic	Statistic	Std. Error	Statistic
Kinerja_Karyawan1	63	2	4	3.14	.055	.435
Kinerja_Karyawan2	63	2	4	3.16	.056	.447
Kinerja_Karyawan3	63	2	4	3.48	.071	.564
Kinerja_Karyawan4	63	3	4	3.44	.063	.501
Kinerja_Karyawan5	63	3	4	3.81	.050	.396
Kinerja_Karyawan6	63	3	5	3.78	.057	.456
Kinerja_Karyawan7	63	3	5	3.90	.044	.346
Kinerja_Karyawan8	63	3	5	3.79	.056	.446
Kinerja_Karyawan9	63	3	4	3.81	.050	.396
Valid N (listwise)	63					

Stres Kerja

Descriptive Statistics

	N	Minimum	Maximum	Mean		Std. Deviation
	Statistic	Statistic	Statistic	Statistic	Std. Error	Statistic
Stress_Kerja1	63	2	4	2.54	.078	.618
Stress_Kerja2	63	2	4	2.70	.089	.710
Stress_Kerja3	63	2	4	2.68	.087	.692
Stress_Kerja4	63	2	4	2.86	.081	.644
Stress_Kerja5	63	1	4	2.78	.083	.659
Stress_Kerja6	63	1	4	2.89	.088	.698
Stress_Kerja7	63	1	4	2.79	.076	.600
Stress_Kerja8	63	1	4	2.76	.087	.689
Stress_Kerja9	63	1	4	2.63	.086	.679
Stress_Kerja10	63	1	4	2.63	.083	.655
Stress_Kerja11	63	2	4	2.62	.069	.551
Valid N (listwise)	63					

Kecerdasan emosional

Descriptive Statistics

	N	Minimum	Maximum	Mean		Std. Deviation
	Statistic	Statistic	Statistic	Statistic	Std. Error	Statistic
Kecerdasan_Emosional1	63	3	4	3.89	.040	.317
Kecerdasan_Emosional2	63	3	5	3.98	.028	.219
Kecerdasan_Emosional3	63	3	4	3.75	.055	.439
Kecerdasan_Emosional4	63	3	4	3.76	.054	.429
Kecerdasan_Emosional5	63	3	5	3.60	.070	.555
Kecerdasan_Emosional6	63	3	5	3.62	.066	.521
Kecerdasan_Emosional7	63	3	5	3.87	.058	.458
Kecerdasan_Emosional8	63	3	5	4.00	.055	.440
Kecerdasan_Emosional9	63	3	5	3.56	.067	.532
Kecerdasan_Emosional10	63	3	5	4.00	.068	.539
Kecerdasan_Emosional11	63	3	5	4.05	.073	.580
Kecerdasan_Emosional12	63	3	5	4.10	.059	.465
Kecerdasan_Emosional13	63	3	5	4.17	.053	.423
Kecerdasan_Emosional14	63	3	5	3.87	.066	.523
Valid N (listwise)	63					

Uji Valid dan Reliability

Kinerja karyawan

		Kinerja_Karyawan
Kinerja_Karyawan1	Pearson Correlation	.579**
	Sig. (2-tailed)	.000
	N	63
Kinerja_Karyawan2	Pearson Correlation	.612**
	Sig. (2-tailed)	.000
	N	63
Kinerja_Karyawan3	Pearson Correlation	.742**
	Sig. (2-tailed)	.000
	N	63
Kinerja_Karyawan4	Pearson Correlation	.526**
	Sig. (2-tailed)	.000
	N	63
Kinerja_Karyawan5	Pearson Correlation	.707**
	Sig. (2-tailed)	.000
	N	63
Kinerja_Karyawan6	Pearson Correlation	.743**
	Sig. (2-tailed)	.000
	N	63
Kinerja_Karyawan7	Pearson Correlation	.669**
	Sig. (2-tailed)	.000
	N	63
Kinerja_Karyawan8	Pearson Correlation	.715**
	Sig. (2-tailed)	.000
	N	63
Kinerja_Karyawan9	Pearson Correlation	.661**
	Sig. (2-tailed)	.000
	N	63
Kinerja_Karyawan	Pearson Correlation	1
	Sig. (2-tailed)	
	N	63

** . Correlation is significant at the 0.01 level (2-tailed).

* . Correlation is significant at the 0.05 level (2-tailed).

Reliability Statistics

Cronbach's Alpha	N of Items
.835	9

Stres Kerja

		Stress_Kerja
Stress_Kerja1	Pearson	.795**
	Correlation	
	Sig. (2-tailed)	.000
	N	63
Stress_Kerja2	Pearson	.780**
	Correlation	
	Sig. (2-tailed)	.000
	N	63
Stress_Kerja3	Pearson	.817**
	Correlation	
	Sig. (2-tailed)	.000
	N	63
Stress_Kerja4	Pearson	.781**
	Correlation	
	Sig. (2-tailed)	.000
	N	63
Stress_Kerja5	Pearson	.792**
	Correlation	
	Sig. (2-tailed)	.000
	N	63
Stress_Kerja6	Pearson	.803**
	Correlation	
	Sig. (2-tailed)	.000
	N	63
Stress_Kerja7	Pearson	.794**
	Correlation	
	Sig. (2-tailed)	.000
	N	63
Stress_Kerja8	Pearson	.736**
	Correlation	
	Sig. (2-tailed)	.000
	N	63
Stress_Kerja9	Pearson	.805**
	Correlation	
	Sig. (2-tailed)	.000
	N	63
Stress_Kerja10	Pearson	.800**
	Correlation	
	Sig. (2-tailed)	.000
	N	63
Stress_Kerja11	Pearson	.770**
	Correlation	
	Sig. (2-tailed)	.000
	N	63
Stress_Kerja	Pearson	1
	Correlation	
	Sig. (2-tailed)	
	N	63

** . Correlation is significant at the 0.01 level (2-tailed).

Reliability Statistics

Cronbach's Alpha	N of Items
.938	11

Kecerdasan emosional

		Kecerdasan_Emosional
Kecerdasan_Emosional1	Pearson Correlation	.413**
	Sig. (2-tailed)	.001
	N	63
Kecerdasan_Emosional2	Pearson Correlation	.342**
	Sig. (2-tailed)	.006
	N	63
Kecerdasan_Emosional3	Pearson Correlation	.592**
	Sig. (2-tailed)	.000
	N	63
Kecerdasan_Emosional4	Pearson Correlation	.585**
	Sig. (2-tailed)	.000
	N	63
Kecerdasan_Emosional5	Pearson Correlation	.714**
	Sig. (2-tailed)	.000
	N	63
Kecerdasan_Emosional6	Pearson Correlation	.736**
	Sig. (2-tailed)	.000
	N	63
Kecerdasan_Emosional7	Pearson Correlation	.578**
	Sig. (2-tailed)	.000
	N	63
Kecerdasan_Emosional8	Pearson Correlation	.594**
	Sig. (2-tailed)	.000
	N	63
Kecerdasan_Emosional9	Pearson Correlation	.713**
	Sig. (2-tailed)	.000
	N	63
Kecerdasan_Emosional10	Pearson Correlation	.674**
	Sig. (2-tailed)	.000

	N	63
Kecerdasan_Emosional11	Pearson Correlation	.742**
	Sig. (2-tailed)	.000
	N	63
Kecerdasan_Emosional12	Pearson Correlation	.660**
	Sig. (2-tailed)	.000
	N	63
Kecerdasan_Emosional13	Pearson Correlation	.707**
	Sig. (2-tailed)	.000
	N	63
Kecerdasan_Emosional14	Pearson Correlation	.632**
	Sig. (2-tailed)	.000
	N	63
Kecerdasan_Emosional	Pearson Correlation	1
	Sig. (2-tailed)	
	N	63

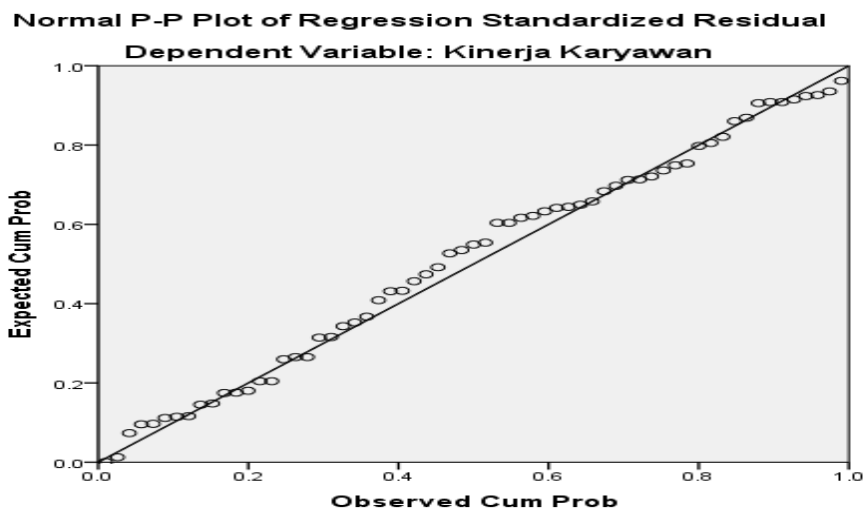
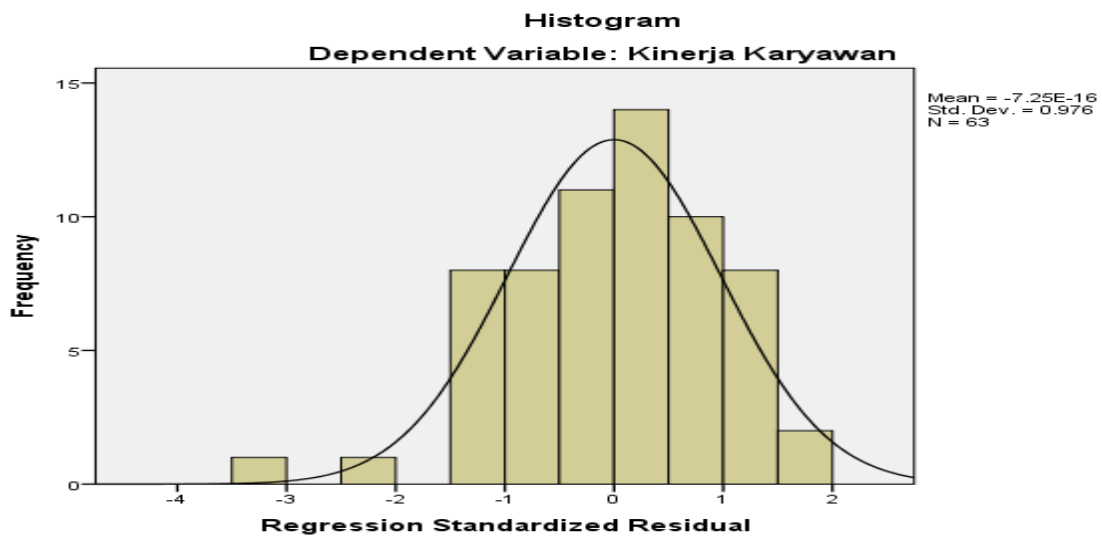
** . Correlation is significant at the 0.01 level (2-tailed).

* . Correlation is significant at the 0.05 level (2-tailed).

Reliability Statistics

Cronbach's Alpha	N of Items
.882	14

Uji Normalitas



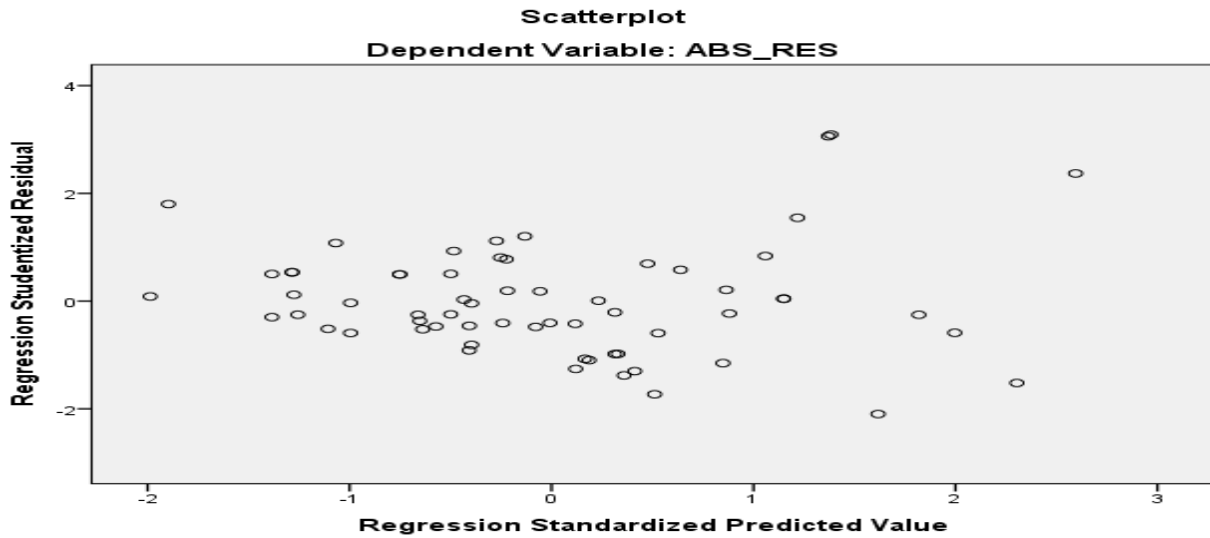
One-Sample Kolmogorov-Smirnov Test

		Unstandardized Residual
N		63
Normal Parameters ^{a,b}	Mean	.0000000
	Std. Deviation	2.06996240
Most Extreme Differences	Absolute	.082
	Positive	.044
	Negative	-.082
Kolmogorov-Smirnov Z		.654
Asymp. Sig. (2-tailed)		.786

a. Test distribution is Normal.

b. Calculated from data.

Uji Heteros



Coefficients^a

Model	Unstandardized Coefficients		Standardized Coefficients	t	Sig.
	B	Std. Error	Beta		
(Constant)	-2.893	3.593		-.805	.424
1 Stress Kerja	.005	.078	.018	.064	.949
KecerdasanEmosional	.002	.063	.006	.036	.971
Stress	.003	.001	.546	1.933	.058
Kerja*KecerdasanEmosional					

a. Dependent Variable: ABS_RES

Uji Multikolonieritas

Coefficients^a

Model	Unstandardized Coefficients		Standardized Coefficients	t	Sig.	Collinearity Statistics	
	B	Std. Error	Beta			Tolerance	VIF
(Constant)	13.903	5.805		2.395	.020		
Stress Kerja	.274	.126	.593	2.166	.034	.141	7.068
KecerdasanEmosional	.441	.101	.696	4.344	.000	.413	2.418
Stress Kerja*KecerdasanEmosional	-.008	.002	-1.006	-3.719	.000	.145	6.894

a. Dependent Variable: KinerjaKaryawan

Uji Regresi Linear Sederhana

Model Summary

Model	R	R Square	Adjusted R Square	Std. Error of the Estimate
1	.409 ^a	.168	.154	2.405

a. Predictors: (Constant), Stress Kerja

ANOVA^a

Model		Sum of Squares	df	Mean Square	F	Sig.
1	Regression	71.073	1	71.073	12.284	.001 ^b
	Residual	352.927	61	5.786		
	Total	424.000	62			

a. Dependent Variable: KinerjaKaryawan

b. Predictors: (Constant), Stress Kerja

Coefficients^a

Model		Unstandardized Coefficients		Standardized Coefficients	t	Sig.
		B	Std. Error	Beta		
1	(Constant)	37.973	1.637		23.191	.000
	Stress Kerja	-.189	.054	-.409	-3.505	.001

a. Dependent Variable: KinerjaKaryawan

Uji MRA

Model Summary

Model	R	R Square	Adjusted R Square	Std. Error of the Estimate
1	.611 ^a	.373	.342	2.122

a. Predictors: (Constant), Stress Kerja*KecerdasanEmosional, KecerdasanEmosional, Stress Kerja

ANOVA^a

Model		Sum of Squares	df	Mean Square	F	Sig.
1	Regression	158.346	3	52.782	11.723	.000 ^b
	Residual	265.654	59	4.503		

Total	424.000	62			
-------	---------	----	--	--	--

a. Dependent Variable: KinerjaKaryawan

b. Predictors: (Constant), Stress Kerja*KecerdasanEmosional, KecerdasanEmosional, Stress Kerja

Coefficients^a

Model	Unstandardized Coefficients		Standardized Coefficients	t	Sig.
	B	Std. Error	Beta		
(Constant)	13.903	5.805		2.395	.020
Stress Kerja	.274	.126	.593	2.166	.034
KecerdasanEmosional	.441	.101	.696	4.344	.000
Stress Kerja*KecerdasanEmosional	-.008	.002	-1.006	-3.719	.000

a. Dependent Variable: KinerjaKaryawan