

LAMPIRAN

Lampiran 1 : Pemilihan Sampel

Tabel 4.1

Perusahaan Sampel

NO	KODE	NAMA PERUSAHAAN
1	INTP	PT.Indocement Tunggul Prakasa Tbk
2	SMCB	PT.Holicm Indonesia Tbk
3	SMGR	PT.Semen Gersik Tbk
4	ARNA	PT Arwana Citramulia Tbk
5	TOTO	PT.Surya Toto Indonesia Tbk
6	BTON	PT Betonjaya Manunggal Tbk
7	LION	PT.Lion Metal Works Tbk
8	LMSH	PT Lion Mesh Prima Tbk
9	PICO	PT Pelangi Indah Canindo Tbk
10	BUDI	PT Budi Starch & Sweetener Tbk
11	EKAD	PT Ekadharma International Tbk
12	SRSN	PT Indo Acidatama Tbk
13	AKPI	PT Argha Karya Prima Industry Tbk
14	TRST	PT Trias Sentosa Tbk
15	CPIN	PT Charoen Pokphand Indonesia Tbk
16	JPFA	PT JAPFA Tbk
17	ASII	PT.Astra International Tbk
18	AUTO	PT.Astra Auto Part Tbk
19	BRAM	PT.Indo Kordsa Tbk
20	INDS	PT Indospring Tbk
21	NIPS	PT.Nippers Tbk
22	SMSM	PT.Selamat Sempurna Tbk
23	BATA	PT. Sepatu Bata Tbk
24	JECC	PT Jembo Cable Company Tbk
25	KBLI	PT.KMI Wire and Cable Tbk
26	SCCO	PT Supreme Cable Manufacturing & Commerce Tbk
27	AISA	PT.Tiga Pilar Sejahtera Food Tbk
28	CEKA	PT Wilmar Cahaya Indonesia Tbk
29	DLTA	PT Delta Djakarta Tbk
30	INDF	PT.Indofood Sukses Makmur Tbk
31	MLBI	PT Multi Bintang Indonesia Tbk
32	MYOR	PT Mayora Indah Tbk
33	SKLT	PT Sekar Laut Tbk
34	STTP	PT Siantar Top Tbk
35	ULTJ	PT.Ultrajaya Milk Industry and Trading Company Tbk
36	GGRM	PT.Gudang Garam Tbk

37	HMSP	PT Hanjaya Mandala Sampoerna Tbk
38	DVLA	PT.Darya Varia Laboratoria Tbk
39	KAEF	PT.Kimia Farma Tbk
40	KLBF	PT.Kalbe Farm Tbk
41	MERK	PT Merck Tbk
42	PYFA	PT Pyridam Farma Tbk
43	SQBI	PT Taisho Pharmaceutical Indonesia Tbk
44	TSPC	PT.Tempo Scan Pasific Tbk
45	TCID	PT.Mandom Indonesia Tbk
46	UNVR	PT.Unilever Indonesia Tbk
47	KDSI	PT Kedawung Setia Industrial Tbk

Lampiran 2 : Pengolahan Data

Data Perhitungan Struktur Modal dengan Proksi *Debt To Equity Ratio* tahun 2010 – 2015

$$\text{DER} = \frac{\text{Total Hutang}}{\text{Total modal}}$$

NO	PERUSAHAAN	TAHUN	Total Aset	Modal/Equity	DER
1	INTP	2010	15,346,146	13,077,390	0.171712
		2011	18151331	15,733,951	0.153641
		2012	22,755,160	19,418,738	0.171815
		2013	26,607,241	22,977,687	0.15796
		2014	28,884,973	24,784,801	0.165431
		2015	27,638,360	23,865,950	0.158067
2	SMCB	2010	10,437,249	6,822,608	0.529306
		2011	10950501	7,527,260	0.454779
		2012	12,168,517	8,418,056	0.445526
		2013	14,894,990	8,772,947	0.697832
		2014	17,195,352	8,758,592	0.963255
		2015	17,321,565	8,449,857	1.049924
3	SMGR	2010	15,562,999	12,006,439	0.285118
		2011	19661603	14,615,097	0.345294
		2012	26,579,084	18,164,855	0.463215
		2013	30,792,884	21,803,976	0.41226
		2014	34,314,666	25,002,452	0.372452
		2015	38,153,119	27,440,798	0.390379
4	ARNA	2010	873,154	408,714	1.120818
		2011	831,508	483,173	0.72093
		2012	937,360	604,808	0.549847
		2013	1,135,245	768,490	0.477241
		2014	1,259,175	912,231	0.380326
		2015	1,430,779	894,728	0.599122
5	TOTO	2010	1,091,583	630,982	0.729975
		2011	1339570	760,541	0.761338
		2012	1,522,664	898,165	0.695305
		2013	1,746,178	1,035,650	0.686069
		2014	2,027,289	1,231,192	0.646606
		2015	2,439,541	1,491,543	0.635582
6	BTON	2010	89,824	73194	0.227204
		2011	118,716	92,125	0.28864

		2012	145,101	113,179	0.282049
		2013	176,136	138,817	0.268836
		2014	174,158	146,640	0.18765
		2015	183,116	149,105	0.228108
7	LION	2010	303,900	259,929	0.169165
		2011	365816	302,060	0.211067
		2012	433,497	371,829	0.16585
		2013	498,568	415,784	0.199103
		2014	600,103	443,979	0.351647
		2015	639,330	454,805	0.406176
8	LMSH	2010	78,200	46,785	0.671476
		2011	15148	57,203	0.713529
		2012	128,548	97,525	0.318103
		2013	141,698	110,468	0.282706
		2014	139,916	115,951	0.206674
		2015	133,783	112,441	0.189797
9	PICO	2010	570,360	175,591	2.25028
		2011	561840	187,914	1.989878
		2012	594,616	199,113	1.986324
		2013	621,400	215,035	1.889762
		2014	626,627	231,101	1.711481
		2015	605,788	247,091	1.45168
10	BUDI	2010	1,967,633	762,710	1.528265
		2011	2123285	811,031	1.618007
		2012	2,299,672	854,135	1.692399
		2013	1,288,796	885,121	1.692146
		2014	2,476,982	913,351	1.711972
		2015	3,265,953	1,105,251	1.954942
11	EKAD	2010	204,470	106,522	0.744175
		2011	237592	147,646	0.609207
		2012	273,893	191,978	0.426695
		2013	114,560	237,708	0.445479
		2014	411,349	273,199	0.505675
		2015	389,692	291,961	0.334736
12	SRSN	2010	364,005	228,252	0.594746
		2011	361182	252,240	0.431898
		2012	402,109	269,204	0.493696
		2013	125,993	314,376	0.33847
		2014	463,347	328,836	0.409052
		2015	574,073	340,080	0.688053
13	AKPI	2010	1,320,417	688,951	0.897527

		2011	1556601	740,165	1.058663
		2012	1,714,834	843,267	1.033561
		2013	2,084,567	1,029,336	1.025157
		2014	2,227,043	1,035,846	1.149975
		2015	2,883,143	1,107,566	1.603134
14	TRST	2010	1,965,891	1,237,982	0.617759
		2011	2078643	1,326,421	0.607672
		2012	2,188,129	1,352,992	0.617252
		2013	3,260,920	1,709,677	0.90733
		2014	3,261,285	1,761,493	0.851432
		2015	3,357,359	1,956,921	0.715634
15	CPIN	2010	6,518,276	4,458,432	0.456717
		2011	8848204	6,189,470	0.429558
		2012	12,348,627	8,176,464	0.510265
		2013	15,722,197	9,950,900	0.579977
		2014	20,862,439	10,943,289	0.906414
		2015	24,684,915	12,561,427	0.965136
16	JPFA	2010	6,981,107	3,074,281	1.136604
		2011	8266417	3,785,347	1.183794
		2012	10,961,464	4,763,327	1.30122
		2013	14,917,590	5,245,222	1.844034
		2014	15,730,435	5,289,994	1.973621
		2015	17,159,466	6,109,692	1.808565
17	ASII	2010	112,857,000	49,310,000	1.09852
		2011	153521000	75,838,000	1.024328
		2012	182,274,000	89,814,000	1.029461
		2013	213,994,000	106,188,000	1.015237
		2014	236,029,000	120,324,000	0.961612
		2015	245,435,000	126,533,000	0.939692
18	AUTO	2010	5,585,852	3,860,827	0.384038
		2011	6964227	4,722,894	0.474568
		2012	8,881,642	5,485,099	0.619231
		2013	12,617,678	9,558,754	0.320013
		2014	14,380,926	10,136,557	0.418719
		2015	14,339,110	10,143,426	0.413636
19	BRAM	2010	1,778,226	1,072,556	0.309693
		2011	1660119	1,201,725	0.381447
		2012	2,223,454	1,640,256	0.355553
		2013	2,932,878	1,998,308	0.467681
		2014	3,833,995	2,221,700	0.725703
		2015	4,277,420	2,681,260	0.595302

20	INDS	2010	769,816	227,300	2.390955
		2011	1,139,715	632,249	0.802636
		2012	1,664,779	1,136,573	0.464736
		2013	2,196,518	1,752,866	0.253101
		2014	2,282,666	1,828,319	0.248506
		2015	2,553,928	1,919,039	0.330837
21	NIPS	2010	337,606	148,167	1.278551
		2011	446688	165,998	1.69093
		2012	525,629	214,913	1.445776
		2013	798,408	235,946	2.383859
		2014	1,206,854	575,894	1.095618
		2015	1,547,720	609,003	1.5414
22	SMSM	2010	1,218,731	519,375	1.051435
		2011	1,327,800	519,375	1.049159
		2012	1,441,204	820,329	0.756862
		2013	1,701,103	1,006,799	0.689615
		2014	1,749,395	1,146,837	0.525409
		2015	2,220,108	1,440,248	0.541476
23	BATA	2010	484,253	331,509	0.460754
		2011	516649	354,480	0.457484
		2012	574,108	387,488	0.481615
		2013	680,685	396,853	0.715207
		2014	774,891	429,116	0.805784
		2015	795,258	547,187	0.453357
24	JECC	2010	561,999	98,679	4.694869
		2011	627038	127,497	3.918061
		2012	708,955	142,876	3.96203
		2013	1,239,822	147,660	7.396458
		2014	1,062,476	171,355	5.200438
		2015	1,358,464	367,756	2.693927
25	KBLI	2010	958,737	290,673	1.040884
		2011	1083524	719,927	0.505047
		2012	1,161,698	845,414	0.37444
		2013	1,337,022	886,650	0.507949
		2014	1,337,351	940,757	0.42157
		2015	1,551,800	1,027,362	0.510471
26	SCCO	2010	1,157,613	423,502	1.721562
		2011	1455621	519,253	1.803298
		2012	1,486,921	654,045	1.273425
		2013	1,762,032	707,611	1.490114
		2014	1,656,007	814,393	1.033426

		2015	1,773,144	922,353	0.922415
27	AISA	2010	1,936,950	575,763	2.339298
		2011	3590309	1,832,817	0.958902
		2012	3,867,576	2,033,453	0.901975
		2013	5,020,824	2,356,773	1.130381
		2014	7,371,846	3,592,829	1.051822
		2015	9,060,979	3,966,907	1.284142
28	CEKA	2010	850,470	308,753	1.754532
		2011	823361	405,059	1.032694
		2012	1,027,693	463,403	1.217709
		2013	1,069,627	528,275	1.024754
		2014	1,284,150	537,551	1.38889
		2015	1,485,826	639,894	1.321989
29	DLTA	2010	708,584	577,668	0.199466
		2011	696167	599,618	0.205516
		2012	745,307	598,212	0.245891
		2013	867,041	676,558	0.281547
		2014	991,947	764,473	0.297557
		2015	1,038,322	849,621	0.222099
30	INDF	2010	47,275,955	16,784,671	1.335928
		2011	53585933	31,610,225	0.695209
		2012	59,324,207	34,142,674	0.737538
		2013	78,092,789	38,373,129	1.03509
		2014	85,938,885	41,228,376	1.08446
		2015	91,831,526	43,121,593	1.129595
31	MLBI	2010	1,137,082	471,221	1.412743
		2011	1220813	530,268	1.302257
		2012	1,152,048	329,853	2.49261
		2013	1,782,148	987,533	0.804647
		2014	2,231,051	553,797	3.028644
		2015	2,100,853	766,480	1.74091
32	MYOR	2010	4,399,191	1,991,295	1.18467
		2011	6599846	2,424,669	1.721957
		2012	8,302,506	3,067,850	1.706295
		2013	9,709,838	3,938,761	1.465201
		2014	10,291,108	4,100,555	1.509687
		2015	11,342,716	5,194,460	1.183618
33	SKLT	2010	199,375	118,305	0.685263
		2011	214,238	670,612	0.136201
		2012	249,746	129,483	0.928801
		2013	301,989	139,650	1.16247

		2014	331,575	153,368	1.161957
		2015	377,111	152,045	1.480259
34	STTP	2010	649,274	447,140	0.451612
		2011	934766	490,065	0.907433
		2012	1,249,841	579,691	1.156045
		2013	1,470,059	694,128	1.11785
		2014	1,700,204	817,594	1.079521
		2015	1,919,568	1,008,809	0.902806
		35	ULTJ	2010	2,006,596
2011	2179182			1,194,538	0.650239
2012	2,420,793			1,676,519	0.44394
2013	2,811,621			2,015,147	0.395244
2014	2,917,084			2,265,098	0.28784
2015	3,539,996			2,797,506	0.265411
36	GGRM	2010	30,741,679	21,197,162	0.444465
		2011	39088705	24,550,928	0.592148
		2012	41,509,325	26,605,713	0.560166
		2013	50,770,251	29,416,271	0.725924
		2014	58,220,600	33,228,720	0.752117
		2015	63,505,413	38,007,909	0.670847
37	HMSP	2010	20,525,123	10,214,464	1.009321
		2011	19329758	10,201,789	0.899308
		2012	26,247,527	13,308,420	0.97225
		2013	27,404,594	14,155,035	0.936032
		2014	28,380,630	13,498,114	1.102563
		2015	38,010,724	32,016,060	0.187239
38	DVLA	2010	848,257	640,602	0.324156
		2011	928291	727,917	0.27527
		2012	1,074,691	841,546	0.277044
		2013	1,190,054	914,703	0.301028
		2014	1,236,248	962,431	0.284505
		2015	1,376,278	973,517	0.413717
39	KAEF	2010	1,657,292	1,114,029	0.487651
		2011	1794242	1,252,506	0.432522
		2012	2,080,558	1,437,066	0.447782
		2013	2,471,940	1,624,355	0.521798
		2014	2,968,185	1,811,144	0.638845
		2015	3,236,224	1,862,097	0.737946
40	KLBF	2010	7,032,497	5,373,784	0.23458
		2011	8274554	6,515,935	0.269895
		2012	9,417,957	7,371,644	0.277593

		2013	11,315,061	8,499,958	0.33119
		2014	12,425,032	9,817,476	0.265604
		2015	13,696,417	10,938,286	0.252154
41	MERK	2010	434,768	363,017	0.197655
		2011	584389	494,182	0.182538
		2012	569,431	929,877	0.164203
		2013	696,946	1,193,952	0.15472
		2014	716,600	863,208	0.188725
		2015	641,647	983,446	0.170934
42	PYFA	2010	100,587	77,225	0.302519
		2011	118034	82,397	0.432491
		2012	135,850	87,705	0.548931
		2013	175,119	93,901	0.864932
		2014	172,737	96,559	0.788927
		2015	159,952	101,222	0.5802
43	SQBI	2010	320,023	269,051	0.189451
		2011	361,756	302,500	0.195888
		2012	318,934	263,448	0.210611
		2013	320,023	269,051	0.189451
		2014	361,756	302,500	0.195888
		2015	397,144	325,359	0.220633
44	TSPC	2010	3,589,596	2,604,104	0.362836
		2011	4250374	3,045,935	0.395425
		2012	4,632,985	3,353,156	0.381679
		2013	5,407,958	3,862,952	0.399955
		2014	5,592,730	4,132,339	0.353405
		2015	6,284,729	4,337,141	0.449049
45	TCID	2010	1,047,238	948,480	0.104122
		2011	1130865	1,020,413	0.108242
		2012	1,261,573	1,096,822	0.150208
		2013	1,465,952	1,182,991	0.239192
		2014	1,853,235	1,283,504	0.443887
		2015	2,082,097	1,714,871	0.214141
46	UNVR	2010	8,701,262	4,045,419	1.150044
		2011	10482312	3,680,937	1.847729
		2012	11,984,979	3,968,365	2.02013
		2013	7,485,249	4,254,670	2.137303
		2014	14,280,670	4,598,782	2.105316
		2015	15,729,945	4,827,360	2.258498
47	KDSI	2010	557,725	255,540	1.182531
		2011	587,567	279,169	1.1047

		2012	570,564	316,006	0.805548
		2013	850,234	352,009	1.415376
		2014	952,177	396,498	1.401467
		2015	1,177,094	378,921	2.106434

Lampiran 2 (lanjutan...)

Data Perhitungan Profitabilitas Dengan Proksi *Return on Asset*
tahun 2010 – 2014

$$ROA = \frac{EAT}{Total\ Asset}$$

NO	PERUSAHAAN	TAHUN	Total Aset	EAT (<i>Earning After Tax</i>)	ROA
1	INTP	2010	15,346,146	3,224,681	0.21013
		2011	18,151,331	3,601,516	0.198416
		2012	22,755,160	4,763,388	0.209332
		2013	26,607,241	5,012,294	0.188381
		2014	28,884,973	5,274,009	0.182587
		2015	27,638,360	4,356,661	0.157631
2	SMCB	2010	10,437,249	848,015	0.081249
		2011	10,950,501	1,054,987	0.096341
		2012	12,168,517	1,350,791	0.111007
		2013	14,894,990	952,305	0.063935
		2014	17,195,352	668,869	0.038898
		2015	17,321,565	199,488	0.011517
3	SMGR	2010	15,562,999	3,659,114	0.235116
		2011	19,661,603	3,955,273	0.201167
		2012	26,579,084	4,926,640	0.185358
		2013	30,792,884	5,354,299	0.173881
		2014	34,314,666	5,573,577	0.162426
		2015	38,153,119	4,525,441	0.118613
4	ARNA	2010	873,154	80,114	0.091752
		2011	831,508	95,949	0.115392
		2012	937,360	158,684	0.169288
		2013	1,135,245	237,698	0.20938
		2014	1,259,175	261,651	0.207796
		2015	1,430,779	71,210	0.04977
5	TOTO	2010	1,091,583	194,398	0.178088
		2011	1,339,570	218,724	0.163279
		2012	1,522,664	235,946	0.154956
		2013	1,746,178	236,558	0.135472
		2014	2,027,289	293,804	0.144925
		2015	2,439,541	285,237	0.116922
6	BTON	2010	89,824	8,393	0.093438

		2011	118,716	19,105	0.16093
		2012	145,101	24,762	0.170654
		2013	176,136	25,883	0.146949
		2014	174,158	7,630	0.043811
		2015	183,116	6,324	0.034535
7	LION	2010	303,900	38,631	0.127117
		2011	365,816	52,535	0.14361
		2012	433,497	85,374	0.196943
		2013	498,568	64,761	0.129894
		2014	600,103	49,002	0.081656
		2015	639,330	46,019	0.07198
8	LMSH	2010	78,200	7,351	0.094003
		2011	15,148	10,897	0.719369
		2012	128,548	41,283	0.321149
		2013	141,698	14,383	0.101505
		2014	139,916	7,403	0.05291
		2015	133,783	1,944	0.014531
9	PICO	2010	570,360	12,063	0.02115
		2011	561,840	12,323	0.021933
		2012	594,616	11,138	0.018731
		2013	621,400	15,439	0.024846
		2014	626,627	16,154	0.025779
		2015	605,788	14,975	0.02472
10	BUDI	2010	1,967,633	46,130	0.023444
		2011	2,123,285	59,128	0.027847
		2012	2,299,672	5,084	0.002211
		2013	1,288,796	42,886	0.033276
		2014	2,476,982	28,499	0.011506
		2015	3,265,953	21,072	0.006452
11	EKAD	2010	204,470	41,232	0.201653
		2011	237,592	27,748	0.116788
		2012	273,893	36,198	0.132161
		2013	114,560	39,451	0.34437
		2014	411,349	40,756	0.099079
		2015	389,692	47,040	0.120711
12	SRSN	2010	364,005	9,830	0.027005
		2011	361,182	23,988	0.066415
		2012	402,109	16,956	0.042168
		2013	125,993	15,994	0.126944
		2014	463,347	14,456	0.031199
		2015	574,073	15,505	0.027009

13	AKPI	2010	1,320,417	68,000	0.051499
		2011	1556601	51,213	0.032901
		2012	1,714,834	31,116	0.018145
		2013	2,084,567	34,620	0.016608
		2014	2,227,043	34,691	0.015577
		2015	2,883,143	27,645	0.009588
14	TRST	2010	1,965,891	136,727	0.06955
		2011	2078643	144,001	0.069276
		2012	2,188,129	61,453	0.028085
		2013	3,260,920	32,966	0.010109
		2014	3,261,285	30,084	0.009225
		2015	3,357,359	25,314	0.00754
15	CPIN	2010	6,518,276	2,219,861	0.34056
		2011	8848204	2,362,497	0.267003
		2012	12,348,627	2,680,872	0.217099
		2013	15,722,197	2,528,690	0.160836
		2014	20,862,439	1,746,644	0.083722
		2015	24,684,915	1,832,598	0.07424
16	JPFA	2010	6,981,107	1,080,470	0.154771
		2011	8266417	650,169	0.078652
		2012	10,961,464	1,074,577	0.098032
		2013	14,917,590	640,637	0.042945
		2014	15,730,435	384,846	0.024465
		2015	17,159,466	524,484	0.030565
17	ASII	2010	112,857,000	17,255,000	0.152893
		2011	153521000	21,348,000	0.139056
		2012	182,274,000	22,742,000	0.124768
		2013	213,994,000	22,297,000	0.104195
		2014	236,029,000	22,125,000	0.093738
		2015	245,435,000	15,613,000	0.063614
18	AUTO	2010	5,585,852	1,226,631	0.219596
		2011	6964227	1,105,649	0.158761
		2012	8,881,642	1,135,914	0.127895
		2013	12,617,678	1,058,015	0.083852
		2014	14,380,926	956,409	0.066505
		2015	14,339,110	322,701	0.022505
19	BRAM	2010	1,778,226	164,869	0.092715
		2011	1660119	54,979	0.033118
		2012	2,223,454	218,023	0.098056
		2013	2,932,878	68,004	0.023187
		2014	3,833,995	197,563	0.051529

		2015	4,277,420	184,291	0.043085
20	INDS	2010	769,816	70,040	0.090983
		2011	1,139,715	120,415	0.105654
		2012	1,664,779	134,068	0.080532
		2013	2,196,518	147,608	0.067201
		2014	2,282,666	127,657	0.055925
		2015	2,553,928	1,934	0.000757
		21	NIPS	2010	337,606
2011	446,688			17,831	0.039918
2012	525,629			21,553	0.041004
2013	798,408			33,872	0.042424
2014	1,206,854			50,135	0.041542
2015	1,547,720			30,671	0.019817
22	SMSM	2010	1,218,731	150,420	0.123423
		2011	1,327,800	164,850	0.124153
		2012	1,441,204	268,543	0.186332
		2013	1,701,103	338,223	0.198826
		2014	1,749,395	421,467	0.240922
		2015	2,220,108	461,307	0.207786
23	BATA	2010	484,253	60,975	0.125916
		2011	516,649	56,615	0.109581
		2012	574,108	69,343	0.120784
		2013	680,685	44,374	0.06519
		2014	774,891	70,781	0.091343
		2015	795,258	129,519	0.162864
24	JECC	2010	561,999	709	0.001262
		2011	627,038	28,783	0.045903
		2012	708,955	31,771	0.044814
		2013	1,239,822	22,554	0.018191
		2014	1,062,476	23,845	0.022443
		2015	1,358,464	2,465	0.001815
25	KBLI	2010	958,737	48,396	0.050479
		2011	1,083,524	63,747	0.058833
		2012	1,161,698	125,182	0.107758
		2013	1,337,022	73,530	0.054995
		2014	1,337,351	70,080	0.052402
		2015	1,551,800	115,371	0.074347
26	SCCO	2010	1,157,613	60,764	0.052491
		2011	1,455,621	109,826	0.07545
		2012	1,486,921	169,742	0.114157
		2013	1,762,032	104,962	0.059569

		2014	1,656,007	137,619	0.083103
		2015	1,773,144	159,120	0.089739
27	AISA	2010	1,936,950	80,066	0.041336
		2011	3,590,309	149,951	0.041765
		2012	3,867,576	253,664	0.065587
		2013	5,020,824	346,728	0.069058
		2014	7,371,846	378,142	0.051295
		2015	9,060,979	373,750	0.041248
		28	CEKA	2010	850,470
2011	823361			96,306	0.116967
2012	1,027,693			58,344	0.056772
2013	1,069,627			65,069	0.060833
2014	1,284,150			41,001	0.031929
2015	1,485,826			106,549	0.07171
29	DLTA	2010	708,584	146,066	0.206138
		2011	696167	151,715	0.217929
		2012	745,307	213,421	0.286353
		2013	867,041	270,498	0.311978
		2014	991,947	288,073	0.290412
		2015	1,038,322	192,045	0.184957
30	INDF	2010	47,275,955	4,016,793	0.084965
		2011	5,358,5933	5,017,425	0.093633
		2012	59,324,207	4,779,446	0.080565
		2013	78,092,789	3,416,635	0.043751
		2014	85,938,885	5,146,323	0.059884
		2015	91,831,526	3,709,501	0.040395
31	MLBI	2010	1,137,082	443,050	0.389638
		2011	1,220,813	507,382	0.41561
		2012	1,152,048	453,405	0.393564
		2013	1,782,148	1,171,229	0.657201
		2014	2,231,051	794,883	0.356282
		2015	2,100,853	496,909	0.236527
32	MYOR	2010	4,399,191	501,981	0.114108
		2011	6,599,846	483,826	0.073309
		2012	8,302,506	744,428	0.089663
		2013	9,709,838	1,058,419	0.109005
		2014	10,291,108	409,825	0.039823
		2015	11,342,716	1,250,233	0.110223
33	SKLT	2010	199,375	4,834	0.024246
		2011	214,238	5,977	0.027899
		2012	249,746	7,963	0.031884

		2013	301,989	11,440	0.037882
		2014	331,575	16,481	0.049705
		2015	377,111	20,067	0.053212
34	STTP	2010	649,274	42,631	0.065659
		2011	934,766	42,672	0.04565
		2012	1,249,841	74,626	0.059708
		2013	1,470,059	114,437	0.077845
		2014	1,700,204	123,465	0.072618
		2015	1,919,568	185,705	0.096743
35	ULTJ	2010	2,006,596	107,123	0.053385
		2011	2,179,182	101,323	0.046496
		2012	2,420,793	353,432	0.145998
		2013	2,811,621	325,127	0.115637
		2014	2,917,084	283,361	0.097138
		2015	3,539,996	523,100	0.147769
36	GGRM	2010	30,741,679	4,214,789	0.137103
		2011	39,088,705	4,958,102	0.126842
		2012	41,509,325	4,068,711	0.098019
		2013	50,770,251	4,383,932	0.086348
		2014	58,220,600	5,395,293	0.09267
		2015	63,505,413	6,452,834	0.101611
37	HMSP	2010	20,525,123	6,438,242	0.313676
		2011	19,329,758	8,051,057	0.416511
		2012	26,247,527	9,945,296	0.378904
		2013	27,404,594	10,818,486	0.394769
		2014	28,380,630	10,181,083	0.358734
		2015	38,010,724	10,363,308	0.272642
38	DVLA	2010	848,257	110,881	0.130716
		2011	928,291	120,915	0.130255
		2012	1,074,691	148,909	0.13856
		2013	1,190,054	125,796	0.105706
		2014	1,236,248	80,929	0.065463
		2015	1,376,278	107,894	0.078395
39	KAEF	2010	1,657,292	138,716	0.0837
		2011	1,794,242	171,763	0.09573
		2012	2,080,558	201,296	0.096751
		2013	2,471,940	215,642	0.087236
		2014	2,968,185	236,531	0.079689
		2015	3,236,224	252,973	0.078169
40	KLBF	2010	7,032,497	1,346,098	0.191411
		2011	8,274,554	1,539,721	0.186079

		2012	9,417,957	1,775,099	0.18848
		2013	11,315,061	1,970,452	0.174144
		2014	12,425,032	2,121,091	0.170711
		2015	13,696,417	2,057,694	0.150236
41	MERK	2010	434,768	118,794	0.273235
		2011	584,389	231,159	0.395557
		2012	569,431	107,808	0.189326
		2013	696,946	175,445	0.251734
		2014	716,600	181,472	0.25324
		2015	641,647	142,545	0.222155
42	PYFA	2010	100,587	4,199	0.041745
		2011	118,034	5,172	0.043818
		2012	135,850	5,308	0.039073
		2013	175,119	6,196	0.035382
		2014	172,737	2,658	0.015388
		2015	159,952	3,087	0.0193
43	SQBI	2010	320,023	92,643	0.289489
		2011	361,756	120,059	0.331878
		2012	318,934	131,259	0.411555
		2013	320,023	92,643	0.289489
		2014	361,756	120,059	0.331878
		2015	397,144	135,249	0.340554
44	TSPC	2010	3,589,596	488,889	0.136196
		2011	4,250,374	585,309	0.137708
		2012	4,632,985	635,176	0.137099
		2013	5,407,958	638,535	0.118073
		2014	5,592,730	584,293	0.104474
		2015	6,284,729	529,219	0.084207
45	TCID	2010	1,047,238	131,445	0.125516
		2011	1,130,865	140,039	0.123834
		2012	1,261,573	150,374	0.119196
		2013	1,465,952	160,148	0.109245
		2014	1,853,235	174,314	0.094059
		2015	2,082,097	544,474	0.261503
46	UNVR	2010	8,701,262	3,384,648	0.388984
		2011	10,482,312	4,164,304	0.39727
		2012	11,984,979	4,839,145	0.403767
		2013	7,485,249	5,352,625	0.71509
		2014	14,280,670	5,738,523	0.401838
		2015	15,729,945	5,851,805	0.372017
47	KDSI	2010	557,725	16,892	0.030287

		2011	587,567	23,629	0.040215
		2012	570,564	36,837	0.064562
		2013	850,234	36,003	0.042345
		2014	952,177	44,489	0.046723
		2015	1,177,094	11,471	0.009745

Lampiran 2 (lanjutan...)

Data Perhitungan Likuiditas Perusahaan Dengan Proksi Current Ratio Tahun 2010 – 2015

$$CR = \frac{\text{Aktiva Lancar}}{\text{Hutang Lancar}}$$

NO	PERUSAHAAN	TAHUN	ASET LANCAR	HUTANG LANCAR	CR (Current Ratio)
1	INTP	2010	7,484,807	1,347,706	5.553738723
		2011	10,314,573	1,476,597	6.985367707
		2012	14,579,400	2,418,762	6.02762901
		2013	16,846,248	2,740,089	6.148065993
		2014	16,086,773	3,260,559	4.933746943
		2015	13,133,854	2,687,743	4.886573605
2	SMCB	2010	2,253,237	1,355,830	1.661887552
		2011	2,468,172	1,683,799	1.465835293
		2012	2,186,797	1,556,875	1.404606664
		2013	2,085,055	3,262,054	0.639184698
		2014	2,290,969	3,807,545	0.601691904
		2015	2,581,774	3,957,441	0.65238471
3	SMGR	2010	7,345,868	2,517,519	2.917899726
		2011	7,646,145	2,889,137	2.646515205
		2012	8,231,297	4,825,205	1.705895812
		2013	9,972,110	5,297,631	1.882371573
		2014	11,648,545	5,273,269	2.208979857
		2015	10,538,704	6,599,190	1.596969325
4	ARNA	2010	298,437	307,161	0.971597957
		2011	261,096	257,011	1.015894261
		2012	323,837	536,051	0.604116026
		2013	405,106	311,781	1.299328695
		2014	507,458	315,673	1.607543249
		2015	509,178	498,858	1.02068725
5	TOTO	2010	716,491	353,324	2.027858283
		2011	837,114	444,637	1.882690824
		2012	966,806	448,768	2.154355926
		2013	1,089,799	496,495	2.194984844
		2014	1,115,004	528,815	2.10849541
		2015	1,348,063	560,119	2.406743924
6	BTON	2010	53,402	14,845	3.59730549
		2011	77,479	24,694	3.137563781

		2012	98,050	29,749	3.295909106
		2013	126,890	34,948	3.630822937
		2014	125,564	24,838	5.055318464
		2015	136,555	31,337	4.357628363
7	LION	2010	271,268	31,104	8.721322016
		2011	327,815	46,153	7.102788551
		2012	394,803	42,249	9.34467088
		2013	428,821	63,729	6.728820474
		2014	488,269	132,155	3.694669139
		2015	508,345	133,694	3.802302272
8	LMSH	2010	52,938	21,656	2.444495752
		2011	74,304	31,552	2.354969574
		2012	101,833	25,036	4.067462853
		2013	115,485	27,519	4.196555107
		2014	107,780	19,357	5.568011572
		2015	89,126	11,018	8.089126883
9	PICO	2010	354,570	345,396	1.026560817
		2011	371,050	319,184	1.162495614
		2012	420,816	338,979	1.241422035
		2013	458,864	349,346	1.313494358
		2014	457,862	276,069	1.658505663
		2015	449,061	282,807	1.58787088
10	BUDI	2010	835,607	811,791	1.0293376
		2011	907,001	725,374	1.250390833
		2012	1,026,460	907,065	1.131627833
		2013	1,094,079	1,016,562	1.07625408
		2014	988,526	945,117	1.045929763
		2015	1,492,365	1,491,109	1.000842326
11	EKAD	2010	122,498	69,499	1.762586512
		2011	155,734	81,809	1.903629185
		2012	180,371	74,814	2.410925763
		2013	229,041	98,355	2.328717401
		2014	296,439	127,249	2.329597875
		2015	284,055	79,594	3.568799156
12	SRSN	2010	248,343	102,457	2.423875382
		2011	259,288	81,670	3.174825517
		2012	306,887	111,511	2.75207827
		2013	294,789	89,840	3.281266696
		2014	335,892	116,995	2.870994487
		2015	440,739	203,380	2.167071492
13	AKPI	2010	497,379	280,154	1.775377114

		2011	674,856	483,167	1.396734462
		2012	792,098	563,999	1.404431568
		2013	943,606	694,269	1.359136012
		2014	920,128	812,877	1.131940011
		2015	1,015,820	985,626	1.030634338
14	TRST	2010	719,326	583,992	1.231739476
		2011	820,792	588,895	1.393783272
		2012	838,465	643,330	1.303320224
		2013	1,194,457	1,045,074	1.142940117
		2014	1,182,293	955,176	1.237775028
		2015	1,137,767	869,537	1.30847451
15	CPIN	2010	4,262,146	1,384,180	3.079184788
		2011	5,250,245	1,575,552	3.33232099
		2012	7,180,890	2,167,652	3.312750386
		2013	8,824,900	2,327,048	3.792315414
		2014	10,009,670	4,467,240	2.240683285
		2015	12,013,294	5,703,842	2.106175802
16	JPFA	2010	4,435,214	1,686,714	2.629499726
		2011	4,932,300	3,099,991	1.591069135
		2012	6,429,500	3,523,891	1.824545651
		2013	9,004,667	4,361,546	2.06455853
		2014	8,709,315	4,916,448	1.771464887
		2015	9,604,154	5,352,670	1.794273512
17	ASII	2010	46,843,000	36,482,000	1.28400307
		2011	65,978,000	48,371,000	1.36399909
		2012	75,799,000	54,178,000	1.399073425
		2013	88,352,000	71,139,000	1.241962918
		2014	97,241,000	73,523,000	1.32259293
		2015	105,161,000	76,242,000	1.37930537
18	AUTO	2010	2,161,302	1,251,731	1.726650534
		2011	2,564,455	1,892,818	1.354834432
		2012	3,205,631	2,751,766	1.164935899
		2013	5,029,517	2,661,312	1.889863721
		2014	5,138,080	3,857,809	1.331864797
		2015	4,796,770	3,625,907	1.322915894
19	BRAM	2010	724,744	180,688	4.011024528
		2011	845,267	303,092	2.788813298
		2012	835,067	392,497	2.127575497
		2013	1,123,241	714,824	1.571353228
		2014	1,360,531	961,082	1.415624265
		2015	1,496,446	828,382	1.806468513

20	INDS	2010	530,954	412,928	1.285827069
		2011	793,907	330,239	2.404037682
		2012	867,620	371,744	2.333917965
		2013	1,086,591	281,799	3.855907934
		2014	975,954	335,123	2.912226257
		2015	992,929	445,007	2.231266025
21	NIPS	2010	178,510	175,506	1.017116224
		2011	266,367	245,828	1.083550287
		2012	308,239	279,356	1.103391372
		2013	534,840	508,837	1.051102809
		2014	671,452	518,955	1.293853995
		2015	701,283	669,596	1.047322565
22	SMSM	2010	737,718	347,357	2.123803464
		2011	816,081	339,634	2.402824806
		2012	899,279	462,535	1.944239895
		2013	1,097,152	523,047	2.097616467
		2014	1,133,730	536,800	2.112015648
		2015	1,368,558	571,712	2.393789181
23	BATA	2010	295,496	141,748	2.084657279
		2011	316,644	148,823	2.127655
		2012	357,374	168,268	2.123838163
		2013	435,579	257,338	1.692633812
		2014	490,876	316,234	1.552255608
		2015	521,211	210,932	2.470990651
24	JECC	2010	461,062	438,884	1.050532715
		2011	521,123	467,758	1.114086771
		2012	614,693	531,672	1.156150785
		2013	1,029,277	1,052,583	0.977858278
		2014	873,185	846,116	1.031992067
		2015	927,493	883,284	1.05005072
25	KBLI	2010	545,716	200,981	2.715261642
		2011	673,270	307,777	2.187525384
		2012	751,100	244,597	3.070765381
		2013	917,081	359,617	2.550160309
		2014	851,746	256,060	3.326353198
		2015	961,563	337,674	2.847607456
26	SCCO	2010	909,761	719,377	1.264651219
		2011	1,192,307	923,585	1.290955353
		2012	1,197,203	818,847	1.462059457
		2013	1,454,622	1,043,363	1.394166747
		2014	1,293,777	826,027	1.566264783

		2015	1,380,917	819,138	1.685817286
27	AISA	2010	666,010	518,294	1.285004264
		2011	1,726,581	911,836	1.893521423
		2012	1,544,940	1,216,997	1.269469029
		2013	2,445,504	1,397,224	1.750259085
		2014	3,977,086	1,493,308	2.663272413
		2015	4,463,635	2,750,456	1.622870898
28	CEKA	2010	643,986	385,079	1.672347752
		2011	619,191	367,060	1.686893151
		2012	560,260	545,467	1.027119881
		2013	847,046	518,962	1.632192723
		2014	1,053,321	718,681	1.465630788
		2015	1,253,019	816,471	1.534676676
29	DLTA	2010	565,954	89,397	6.330794098
		2011	577,645	96,129	6.009060741
		2012	631,333	119,920	5.264618079
		2013	748,111	158,991	4.70536697
		2014	854,176	190,953	4.473226396
		2015	902,007	140,419	6.42368198
30	INDF	2010	20,077,994	9,859,118	2.036489877
		2011	24,501,734	12,831,304	1.909527979
		2012	48,709,933	13,080,544	3.723846118
		2013	44,710,509	19,471,309	2.296225128
		2014	39,719,660	22,681,686	1.75117758
		2015	25,181,533	25,107,538	1.002947123
31	MLBI	2010	597,241	632,026	0.944962707
		2011	656,039	659,873	0.994189791
		2012	462,471	796,679	0.580498545
		2013	706,252	722,542	0.977454598
		2014	816,494	1,588,801	0.513905769
		2015	709,955	1,215,227	0.584215953
32	MYOR	2010	2,684,854	1,040,334	2.580761563
		2011	4,095,299	1,845,792	2.218721828
		2012	5,313,600	1,924,434	2.76112353
		2013	6,430,065	2,631,646	2.443362443
		2014	6,508,769	3,114,338	2.089936609
		2015	7,454,347	3,151,495	2.365336769
33	SKLT	2010	94,512	50,396	1.875386935
		2011	105,145	61,944	1.697420251
		2012	125,667	88,825	1.414770616
		2013	155,108	125,712	1.23383607

		2014	167,419	141,425	1.183800601
		2015	189,759	159,133	1.192455368
34	STTP	2010	291,293	170,423	1.709235256
		2011	313,986	303,434	1.034775272
		2012	569,840	571,296	0.997451409
		2013	684,264	598,989	1.142364885
		2014	799,430	538,631	1.484188619
		2015	875,469	554,491	1.57886963
		35	ULTJ	2010	955,442
2011	924,080			607,594	1.520884011
2012	1,196,427			592,823	2.018185867
2013	1,565,511			633,794	2.470062828
2014	1,642,102			490,967	3.34462805
2015	2,103,565			561,628	3.745477433
36	GGRM	2010	22,908,293	8,481,933	2.700833996
		2011	30,381,754	13,534,319	2.244793698
		2012	29,954,021	13,802,317	2.170216856
		2013	34,604,461	20,094,580	1.722079337
		2014	38,532,600	23,783,134	1.620164945
		2015	42,568,431	24,045,086	1.770358858
37	HMSP	2010	15,768,558	9,778,942	1.612501434
		2011	14,851,460	8,489,897	1.749309797
		2012	21,128,313	11,897,977	1.775790372
		2013	21,247,830	12,123,790	1.752573246
		2014	20,777,514	13,600,230	1.527732546
		2015	29,807,330	4,538,674	6.567409336
38	DVLA	2010	650,141	173,070	3.756520483
		2011	696,925	144,280	4.830364569
		2012	826,343	191,718	4.310200399
		2013	913,984	215,473	4.241756508
		2014	925,294	178,583	5.181310651
		2015	1,043,830	296,298	3.522905993
39	KAEF	2010	1,139,549	469,823	2.425485768
		2011	1,263,030	459,694	2.747545106
		2012	1,506,614	533,306	2.825046034
		2013	1,810,615	746,123	2.426697743
		2014	2,040,431	854,812	2.386993865
		2015	2,100,922	1,088,431	1.930229845
40	KLBF	2010	5,031,545	1,146,489	4.388655277
		2011	5,956,123	1,630,589	3.652743273
		2012	6,441,711	1,891,618	3.40539739

		2013	7,497,319	2,640,590	2.839259029
		2014	8,120,805	2,385,920	3.403636752
		2015	8,748,492	2,365,880	3.697775035
41	MERK	2010	327,436	52,579	6.227505278
		2011	491,726	65,431	7.515183934
		2012	463,883	119,828	3.871240445
		2013	588,238	147,818	3.97947476
		2014	595,339	129,820	4.58588045
		2015	483,680	132,436	3.652179166
42	PYFA	2010	47,074	15,645	3.008884628
		2011	61,889	24,367	2.539869496
		2012	68,588	28,420	2.413370866
		2013	74,974	48,786	1.536793342
		2014	78,078	47,995	1.626794458
		2015	72,746	36,534	1.991186292
43	SQBI	2010	238,665	41,955	5.688594923
		2011	277,856	47,902	5.800509373
		2012	250,157	45,878	5.452657047
		2013	238,665	41,955	5.688594923
		2014	277,856	47,902	5.800509373
		2015	307,407	63,322	4.854663466
44	TSPC	2010	2,642,066	803,106	3.289809813
		2011	3,121,980	1,012,653	3.082971166
		2012	33,931,000	1,097,135	30.92691419
		2013	3,991,116	1,347,466	2.961941897
		2014	3,714,701	1,237,332	3.002186155
		2015	4,304,922	1,696,487	2.537550833
45	TCID	2010	610,789	57,166	10.68448029
		2011	671,882	57,216	11.74290408
		2012	768,615	99,477	7.726559908
		2013	726,505	203,321	3.573192144
		2014	874,017	486,054	1.79818909
		2015	1,112,673	222,931	4.991109357
46	UNVR	2010	3,748,130	4,402,940	0.851278918
		2011	4,446,219	6,474,594	0.686717808
		2012	5,035,962	7,535,896	0.668263203
		2013	5,862,939	8,419,442	0.696357193
		2014	6,337,170	8,864,832	0.714866339
		2015	6,623,114	10,127,542	0.653970529
47	KDSI	2010	354,581	279,997	1.266374283
		2011	382,030	281,285	1.358159873

		2012	369,492	232,231	1.591053735
		2013	490,442	339,512	1.444549824
		2014	556,325	406,689	1.367937171
		2015	731,259	632,245	1.156607012

Lampiran 2 (lanjutan...)

Data Perhitungan Ukuran Perusahaan Dengan Proksi Log Natural Penjualan
tahun 2010 – 2015

Size = Ln (Total Penjualan)

	PERUSAHAAN	TAHUN	Penjualan	SIZE
1	INTP	2010	11,137,805	16.22586
		2011	13,887,892	16.44653
		2012	17,290,337	16.66566
		2013	18,691,286	16.74357
		2014	19,996,264	16.81106
		2015	17,798,055	16.6946
2	SMCB	2010	5,960,589	15.60068
		2011	7,523,964	15.8336
		2012	9,011,076	16.01397
		2013	9,686,262	16.08622
		2014	10,528,723	16.16962
		2015	9,239,022	16.03895
3	SMGR	2010	14,344,189	16.47886
		2011	16,378,794	16.6115
		2012	19,598,248	16.79095
		2013	24,501,241	17.01423
		2014	26,987,035	17.11087
		2015	26,948,004	17.10942
4	ARNA	2010	830,184	13.6294
		2011	922,685	13.73504
		2012	1,113,664	13.92317
		2013	1,417,640	14.1645
		2014	1,609,759	14.2916
		2015	1,291,926	14.07164
5	TOTO	2010	1,121,499	13.93018
		2011	1,341,927	14.10962
		2012	1,576,763	14.27088
		2013	1,711,307	14.35277
		2014	2,053,630	14.53512
		2015	2,278,674	14.6391
6	BTON	2010	127,919	11.75915
		2011	153,646	11.94241
		2012	155,006	11.95122

		2013	113,548	11.63998
		2014	96,008	11.47219
		2015	67,680	11.12255
7	LION	2010	207,833	12.24449
		2011	268,414	12.50029
		2012	333,922	12.71866
		2013	333,674	12.71792
		2014	377,623	12.84165
		2015	389,251	12.87198
8	LMSH	2010	161,012	11.98923
		2011	207,523	12.243
		2012	223,079	12.31528
		2013	256,211	12.45376
		2014	249,072	12.4255
		2015	174,599	12.07025
9	PICO	2010	586,318	13.28162
		2011	621,234	13.33946
		2012	593,267	13.2934
		2013	684,449	13.43637
		2014	694,332	13.45071
		2015	699,311	13.45785
10	BUDI	2010	2,124,381	14.56899
		2011	2,503,984	14.73339
		2012	2,295,369	14.6464
		2013	2,568,954	14.75901
		2014	2,284,211	14.64153
		2015	2,378,805	14.68211
11	EKAD	2010	254,276	12.44618
		2011	328,460	12.70217
		2012	385,037	12.86109
		2013	418,669	12.94484
		2014	526,574	13.17415
		2015	531,538	13.18353
12	SRSN	2010	342,870	12.74511
		2011	387,354	12.86709
		2012	384,145	12.85878
		2013	392,316	12.87982
		2014	472,835	13.0665
		2015	531,573	13.1836
13	AKPI	2010	1,099,386	13.91026
		2011	1,505,559	14.22467

		2012	1,509,185	14.22708
		2013	1,663,385	14.32437
		2014	1,945,383	14.48097
		2015	2,017,467	14.51735
14	TRST	2010	1,745,511	14.37256
		2011	2,025,867	14.52151
		2012	1,949,153	14.48291
		2013	2,033,149	14.5251
		2014	2,507,885	14.73495
		2015	2,457,349	14.71459
15	CPIN	2010	15,077,822	16.52874
		2011	17,957,972	16.70354
		2012	21,310,925	16.87473
		2013	25,662,992	17.06056
		2014	29,150,275	17.18797
		2015	30,107,727	17.22029
16	JPFA	2010	13,955,792	16.45141
		2011	15,633,068	16.5649
		2012	17,832,702	16.69654
		2013	21,412,085	16.87947
		2014	24,458,880	17.0125
		2015	25,022,913	17.0353
17	ASII	2010	129,991,000	18.68298
		2011	162,564,000	18.90658
		2012	188,053,000	19.05223
		2013	193,880,000	19.08275
		2014	201,701,000	19.1223
		2015	184,196,000	19.03151
18	AUTO	2010	6,255,109	15.64891
		2011	7,363,659	15.81207
		2012	8,277,485	15.92905
		2013	10,701,988	16.18594
		2014	12,255,427	16.32148
		2015	11,723,787	16.27713
19	BRAM	2010	1,805,360	14.40627
		2011	1,900,212	14.45748
		2012	1,683,897	14.33662
		2013	2,456,059	14.71407
		2014	2,583,169	14.76453
		2015	3,046,700	14.92957
20	INDS	2010	1,027,120	13.84227

		2011	1,234,986	14.02657
		2012	1,476,988	14.20552
		2013	1,702,447	14.34758
		2014	1,866,977	14.43983
		2015	1,659,506	14.32203
21	NIPS	2010	400,895	12.90145
		2011	579,224	13.26944
		2012	702,719	13.46271
		2013	911,064	13.72237
		2014	1,015,868	13.83125
		2015	987,863	13.8033
22	SMSM	2010	1,561,787	14.26134
		2011	1,561,787	14.26134
		2012	2,163,842	14.5874
		2013	2,372,983	14.67966
		2014	2,632,860	14.78358
		2015	2,802,924	14.84617
23	BATA	2010	644,189	13.37575
		2011	678,592	13.42778
		2012	751,449	13.52976
		2013	902,459	13.71288
		2014	1,008,728	13.8242
		2015	1,028,851	13.84395
24	JECC	2010	830,723	13.63005
		2011	1,267,418	14.05249
		2012	1,234,828	14.02644
		2013	1,490,073	14.21434
		2014	1,493,012	14.21631
		2015	1,663,336	14.32434
25	KBLI	2010	1,228,092	14.02097
		2011	1,841,939	14.42633
		2012	2,273,197	14.6367
		2013	2,572,350	14.76033
		2014	2,384,078	14.68432
		2015	2,662,039	14.7946
26	SCCO	2010	2,198,397	14.60324
		2011	3,363,728	15.02856
		2012	3,542,885	15.08045
		2013	3,751,042	15.13754
		2014	3,703,268	15.12473
		2015	3,533,081	15.07768

27	AISA	2010	705,220	13.46627
		2011	1,752,802	14.37673
		2012	2,747,623	14.82625
		2013	4,056,735	15.21589
		2014	5,139,974	15.45256
		2015	6,010,895	15.60908
28	CEKA	2010	718,205	13.48451
		2011	1,238,169	14.02914
		2012	1,123,520	13.93198
		2013	2,531,881	14.74447
		2014	3,701,869	15.12435
		2015	3,485,734	15.06419
29	DLTA	2010	547,816	13.21369
		2011	564,051	13.2429
		2012	1,719,815	14.35773
		2013	867,067	13.67287
		2014	879,253	13.68683
		2015	699,507	13.45813
30	INDF	2010	38,403,360	17.46366
		2011	45,332,256	17.62953
		2012	50,059,427	17.72872
		2013	57,731,998	17.87132
		2014	63,594,452	17.96804
		2015	64,061,947	17.97536
31	MLBI	2010	1,790,164	14.39782
		2011	1,858,750	14.43541
		2012	1,566,984	14.26466
		2013	3,561,989	15.08583
		2014	2,988,501	14.91028
		2015	2,696,318	14.8074
32	MYOR	2010	7,224,165	15.79294
		2011	9,453,866	16.06193
		2012	10,510,626	16.1679
		2013	12,017,837	16.3019
		2014	14,169,088	16.46657
		2015	14,818,731	16.5114
33	SKLT	2010	314,146	12.65761
		2011	344,436	12.74966
		2012	401,724	12.90352
		2013	567,049	13.2482
		2014	681,420	13.43193

		2015	745,108	13.52128
34	STTP	2010	762,613	13.54451
		2011	1,027,684	13.84282
		2012	1,283,736	14.06529
		2013	1,694,935	14.34315
		2014	2,170,464	14.59045
		2015	2,544,278	14.74936
35	ULTJ	2010	1,880,411	14.447
		2011	2,102,384	14.55858
		2012	2,809,851	14.84864
		2013	3,460,231	15.05685
		2014	3,916,789	15.18078
		2015	4,393,933	15.29574
36	GGRM	2010	37,691,997	17.44496
		2011	41,884,352	17.55042
		2012	49,028,696	17.70792
		2013	55,436,954	17.83076
		2014	65,185,850	17.99275
		2015	70,365,573	18.06921
37	HMSP	2010	43,381,658	17.58555
		2011	52,856,708	17.7831
		2012	66,626,123	18.01461
		2013	75,025,207	18.13333
		2014	80,690,139	18.20613
		2015	89,069,306	18.30493
38	DVLA	2010	929,197	13.74208
		2011	972,297	13.78742
		2012	1,087,380	13.89928
		2013	1,101,684	13.91235
		2014	1,103,822	13.91429
		2015	1,306,098	14.08255
39	KAEF	2010	3,183,829	14.9736
		2011	3,481,166	15.06288
		2012	3,735,339	15.13335
		2013	4,348,074	15.28524
		2014	4,521,024	15.32425
		2015	4,860,371	15.39663
40	KLBF	2010	10,226,789	16.14052
		2011	10,911,860	16.20536
		2012	13,636,405	16.42825
		2013	16,002,131	16.58823

		2014	17,368,533	16.67017
		2015	17,887,464	16.69961
41	MERK	2010	759,689	13.54066
		2011	918,532	13.73053
		2012	929,877	13.74281
		2013	1,193,952	13.99278
		2014	863,208	13.66841
		2015	983,446	13.79882
42	PYFA	2010	140,858	11.85551
		2011	151,094	11.92566
		2012	176,731	12.08238
		2013	192,556	12.16814
		2014	222,302	12.31179
		2015	217,844	12.29153
43	SQBI	2010	305,251	12.62889
		2011	341,815	12.74202
		2012	419,695	12.94728
		2013	305,251	12.62889
		2014	341,815	12.74202
		2015	387,535	12.86756
44	TSPC	2010	5,134,242	15.45144
		2011	5,780,664	15.57003
		2012	6,630,810	15.70724
		2013	6,854,889	15.74047
		2014	7,512,115	15.83203
		2015	8,181,482	15.91738
45	TCID	2010	1,466,939	14.19869
		2011	1,654,671	14.31911
		2012	1,851,153	14.43132
		2013	2,027,899	14.52251
		2014	2,308,204	14.65198
		2015	2,314,890	14.65487
46	UNVR	2010	19,690,239	16.79563
		2011	23,469,218	16.9712
		2012	27,303,248	17.12252
		2013	30,757,435	17.24164
		2014	34,511,534	17.3568
		2015	36,484,030	17.41239
47	KDSI	2010	1,123,050	13.93156
		2011	1,180,506	13.98145
		2012	1,301,333	14.0789

		2013	1,386,315	14.14216
		2014	1,626,233	14.30178
		2015	1,713,946	14.35431

Lampiran 2 (lanjutan...)

Data Perhitungan Risiko Bisnis tahun 2010 – 2015

$$\text{BRISK} = \text{STDV} \left(\alpha \frac{\text{EBIT}}{\text{TOTAL ASET}} \right)$$

NO	PERUSAHAAN	TAHUN	Total Asset	EBIT	BRISK	
					EBIT/Total Aset	Standar Deviasi
1	INTP	2006	9,598,280	862,197	0.089828282	
		2007	10,016,028	1,412,570	0.141030956	
		2008	11,286,707	2,332,787	0.206684465	
		2009	13276270	3,796,327	0.285948312	
		2010	15,346,146	4,248,476	0.276843189	0.085076147
		2011	18151331	4,708,156	0.259383513	0.060348712
		2012	22,755,160	6,239,550	0.274203741	0.031622001
		2013	26,607,241	6,595,154	0.247870645	0.01512162
		2014	28,884,973	6,789,602	0.235056547	0.017651432
		2015	27,638,360	5,645,111	0.204249131	0.026570193
2	SMCB	2006	7,065,846	241,158	0.034130096	
		2007	7,208,250	186,502	0.025873409	
		2008	7,208,250	298,639	0.041430167	
		2009	7,265,366	1,296,978	0.178515164	
		2010	10,437,249	1,147,957	0.109986549	0.065394073
		2011	10950501	1,533,257	0.140017064	0.064783126
		2012	12,168,517	1,872,712	0.153898129	0.0527578
		2013	14,894,990	1,336,548	0.089731379	0.035175183
		2014	17,195,352	1,007,397	0.058585425	0.038345017
		2015	17,321,565	350,418	0.020230158	0.055696488
3	SMGR	2006	7,496,419	1,857,041	0.247723746	
		2007	8,515,227	2,560,214	0.300663036	
		2008	10,602,964	3,589,529	0.338540148	
		2009	12,951,308	4,655,188	0.359437672	
		2010	15,562,999	4,722,623	0.303451989	0.042623362
		2011	19661603	5,089,953	0.258877824	0.038659037
		2012	26,579,084	6,287,454	0.236556459	0.051827226
		2013	30,792,884	6,920,400	0.224740235	0.055204403
		2014	34,314,666	7,090,766	0.206639517	0.037272513
		2015	38,153,119	5,850,923	0.153353727	0.039842302
4	ARNA	2006	478,778	42,009	0.087742127	

		2007	630,587	63,088	0.100046465	
		2008	736,092	79,074	0.107424072	
		2009	822,687	90,887	0.110475795	
		2010	873,154	107,737	0.123388314	0.01316281
		2011	831,508	129,918	0.156243836	0.022197588
		2012	937,360	212,272	0.226457284	0.049579343
		2013	1,135,245	316,350	0.278662315	0.071573092
		2014	1,259,175	348,379	0.276672424	0.070348729
		2015	1,430,779	95,514	0.066756641	0.090041948
5	TOTO	2006	908,168	117,536	0.129420988	
		2007	913,995	83,019	0.090830913	
		2008	1,031,131	90,758	0.088017914	
		2009	1,010,892	254,851	0.252105072	
		2010	1,091,583	260,027	0.238210929	0.079844776
		2011	1339570	293,027	0.218747061	0.081350467
		2012	1,522,664	336,282	0.220851087	0.066024445
		2013	1,746,178	323,205	0.185092814	0.025189966
		2014	2,027,289	381,883	0.188371268	0.02279232
		2015	2,439,541	381,574	0.15641221	0.026726416
6	BTON	2006	33,674	1,064	0.031597078	
		2007	46,469	12,421	0.267296477	
		2008	70,509	29,874	0.423690593	
		2009	69,784	12,892	0.184741488	
		2010	89,824	11,357	0.126436142	0.148612191
		2011	118,716	24,486	0.206256949	0.11353633
		2012	145,101	32,391	0.223230715	0.112758801
		2013	176,136	33,272	0.188899487	0.03658646
		2014	174,158	9,580	0.055007522	0.069142889
		2015	183,116	7,804	0.042617794	0.087126676
7	LION	2006	187,689	29,748	0.158496236	
		2007	216,130	36,740	0.169990284	
		2008	253,142	57,061	0.225411034	
		2009	271,366	44,986	0.16577611	
		2010	303,900	50,270	0.165416255	0.027364717
		2011	365816	67,195	0.183685241	0.025346651
		2012	433,497	103,652	0.239106614	0.034364292
		2013	498,568	85,027	0.170542434	0.03119019
		2014	600,103	62,858	0.104745352	0.047974098
		2015	639,330	58,452	0.091426963	0.060546068
8	LMSH	2006	43,588	4,271	0.097985684	
		2007	61,988	8,913	0.143785894	

		2008	72,831	14,055	0.192981011	
		2009	46699	3,890	0.083299428	
		2010	78,200	10,316	0.131918159	0.042913278
		2011	98,019	15,148	0.154541466	0.387468088
		2012	128,548	45,071	0.350616112	0.376107926
		2013	141,698	19,438	0.137179071	0.382766395
		2014	139,916	11,007	0.07866863	0.383549425
		2015	133,783	3,807	0.02845653	0.399998157
9	PICO	2006	270,734	364	0.001344493	
		2007	452,880	11,564	0.025534358	
		2008	588564	20,000	0.033981011	
		2009	542660	18,459	0.034015774	
		2010	570,360	16,674	0.029234168	0.013597619
		2011	561840	16,747	0.029807418	0.003578291
		2012	594,616	15,153	0.025483673	0.003595954
		2013	621,400	20,990	0.033778565	0.00354784
		2014	626,627	20,441	0.032620682	0.003240192
		2015	605,788	17,451	0.028807107	0.003276939
10	BUDI	2006	931,614	41,707	0.044768541	
		2007	1,485,651	72,564	0.048843234	
		2008	1698750	35,566	0.020936571	
		2009	1598824	178,417	0.111592646	
		2010	1,967,633	71,883	0.036532727	0.034699733
		2011	2123285	90,095	0.042431892	0.034845903
		2012	2,299,672	12,475	0.005424687	0.040758626
		2013	1,288,796	38,549	0.029910863	0.039707047
		2014	2,476,982	43,488	0.017556849	0.01491795
		2015	3,265,953	52,125	0.015960119	0.014236193
11	EKAD	2006	74,647	7,904	0.105885032	
		2007	84,926	6,417	0.075559899	
		2008	140764	6,892	0.048961382	
		2009	165123	22,945	0.13895702	
		2010	204,470	33,672	0.164679415	0.046653475
		2011	237592	35,220	0.148237314	0.050157087
		2012	273,893	47,930	0.174995345	0.050184374
		2013	114,560	51,988	0.453805866	0.133598396
		2014	411,349	58,722	0.142754692	0.133059639
		2015	389,692	66,307	0.170152325	0.132544233
12	SRSN	2006	330,445	36,296	0.109839762	
		2007	334128	38,116	0.114076043	
		2008	392937	12,570	0.031989861	

		2009	413777	36,508	0.0882311	
		2010	364,005	14,181	0.038958256	0.038895956
		2011	361182	33,811	0.093612085	0.036000209
		2012	402,109	25,761	0.064064719	0.027900659
		2013	125,993	32,667	0.259276309	0.086856178
		2014	463,347	29,858	0.064439826	0.08889443
		2015	574,073	20,715	0.036084261	0.089428393
13	AKPI	2006	1,460,273	24,408	0.016714683	
		2007	1544670	25,994	0.01682819	
		2008	1644230	93,121	0.056635021	
		2009	1587636	148,332	0.093429476	
		2010	1,320,417	89,815	0.068020178	0.033401427
		2011	1556601	76,684	0.049263748	0.027938202
		2012	1,714,834	58,038	0.033844675	0.022317368
		2013	2,084,567	66,417	0.031861293	0.025796312
		2014	2,227,043	61,206	0.02748308	0.01665691
		2015	2,883,143	51,139	0.01773724	0.011459502
14	TRST	2006	2,020,478	27,432	0.013576985	
		2007	2138991	23,179	0.010836418	
		2008	2158866	25,006	0.011582933	
		2009	1921660	176,003	0.091589043	
		2010	1,965,891	175,301	0.089171271	0.042951444
		2011	2078643	180,429	0.086801341	0.042744405
		2012	2,188,129	80,749	0.036903217	0.036719579
		2013	3,260,920	72,554	0.022249549	0.033101996
		2014	3,261,285	63,102	0.019348815	0.034517502
2015	3,357,359	51,098	0.015219701	0.02949447		
15	CPIN	2006	3,160,132	316,765	0.100237901	
		2007	4760491	290,598	0.061043703	
		2008	5178540	375,589	0.072527971	
		2009	5349375	2,160,396	0.403859516	
		2010	6,518,276	2,818,227	0.432357728	0.18713532
		2011	8848204	2,974,580	0.336178958	0.180920028
		2012	12,348,627	3,376,499	0.273431127	0.143175006
		2013	15,722,197	3,451,333	0.219519766	0.088500459
		2014	20,862,439	2,106,892	0.100989726	0.12433126
		2015	24,684,915	2,281,628	0.092430053	0.106759649
16	JPFA	2006	3,622,463	370,105	0.102169436	
		2007	4043497	291,072	0.071985215	
		2008	5774844	369,705	0.064019911	
		2009	6070137	1,249,918	0.205912651	

		2010	6,981,107	1,436,855	0.20582051	0.070719704
		2011	8266417	872,309	0.105524437	0.070405063
		2012	10,961,464	1,364,891	0.124517218	0.062990785
		2013	14,917,590	895,947	0.060059768	0.064216169
		2014	15,730,435	542,549	0.0344904	0.066202986
		2015	17,159,466	697,677	0.040658433	0.040025823
17	ASII	2006	57,929,290	5,148,463	0.088874954	
		2007	63519598	10,633,000	0.167397155	
		2008	61166666	15,363,000	0.251166215	
		2009	89938000	16,402,000	0.182370077	
		2010	112,857,000	21,031,000	0.186350869	0.058007565
		2011	153521000	25,772,000	0.167872799	0.034669945
		2012	182,274,000	27,898,000	0.15305529	0.037584872
		2013	213,994,000	27,523,000	0.128615756	0.02357567
		2014	236,029,000	27,352,000	0.115884065	0.02859505
		2015	245,435,000	19,630,000	0.079980443	0.034149709
18	AUTO	2006	3,028,160	386,857	0.127753157	
		2007	3454254	577,248	0.167112204	
		2008	3028465	771,816	0.254853862	
		2009	4644939	947,001	0.203878027	
		2010	5,585,852	1,394,261	0.24960579	0.054276793
		2011	6964227	1,255,083	0.180218566	0.039805265
		2012	8,881,642	1,263,368	0.142244869	0.047491942
		2013	12,617,678	1,268,604	0.100541795	0.057104459
		2014	14,380,926	1,108,055	0.077050323	0.068305131
		2015	14,339,110	433,596	0.030238697	0.057943333
19	BRAM	2006	1,528,904	39,602	0.025902215	
		2007	1554863	66,777	0.042947192	
		2008	1709355	160,866	0.094109182	
		2009	1349631	133,938	0.099240459	
		2010	1,778,226	213,897	0.120286735	0.040094939
		2011	1660119	123,007	0.074095291	0.029205406
		2012	2,223,454	244,795	0.110096723	0.017456266
		2013	2,932,878	102,995	0.035117383	0.034083309
		2014	3,833,995	271,072	0.070702231	0.034071197
		2015	4,277,420	267,994	0.062653188	0.026899647
20	INDS	2006	490,604	4,355	0.008876813	
		2007	599273	21,190	0.035359511	
		2008	918228	47,163	0.05136306	
		2009	621140	79,914	0.128656986	
		2010	769,816	103,585	0.134558128	0.056736668

		2011	1,139,715	160,680	0.140982614	0.050553235
		2012	1,664,779	180,798	0.108601802	0.036439117
		2013	2,196,518	184,580	0.084033001	0.023176982
		2014	2,282,666	167,540	0.073396634	0.029853244
		2015	2,553,928	4,134	0.001618683	0.051782086
21	NIPS	2006	220,228	12,066	0.054788674	
		2007	288147	7,340	0.025473109	
		2008	190225	4,176	0.02195295	
		2009	314478	7,075	0.022497599	
		2010	337,606	17,623	0.052199902	0.016613203
		2011	446688	24,780	0.055474962	0.016815227
		2012	525,629	29,363	0.055862595	0.017742621
		2013	798,408	45,584	0.057093616	0.014717704
		2014	1,206,854	67,390	0.055839397	0.001834773
		2015	1,547,720	41,752	0.026976456	0.01302436
22	SMSM	2006	716,686	105,337	0.146977895	
		2007	830050	130,617	0.1573604	
		2008	663138	143,624	0.21658237	
		2009	941651	185,861	0.197377797	
		2010	1,218,731	227845	0.186952658	0.028662227
		2011	1,327,800	296506	0.223306221	0.026198932
		2012	1,441,204	344,721	0.239189594	0.020778337
		2013	1,701,103	458,595	0.26958685	0.033121142
		2014	1,749,395	541,150	0.309335513	0.04640898
		2015	2,220,108	583,717	0.262922795	0.032825984
23	BATA	2006	271,461	32,409	0.119387315	
		2007	332080	53,939	0.162427728	
		2008	305779	228,754	0.748102388	
		2009	416679	71,678	0.172022108	
		2010	484,253	84,567	0.174633921	0.2652315
		2011	516649	78,631	0.152194236	0.260778179
		2012	574,108	99,147	0.172697472	0.259640136
		2013	680,685	63,758	0.093667409	0.034419667
		2014	774,891	98,926	0.127664407	0.034019119
		2015	795,258	148,804	0.187114119	0.037128697
24	JECC	2006	362,648	1,425	0.00392943	
		2007	470475	37,418	0.079532387	
		2008	673397	1,734	0.002575004	
		2009	587381	29,831	0.050786457	
		2010	561,999	2,223	0.003955523	0.035279767
		2011	627038	41,273	0.065822167	0.03551179

		2012	708,955	48,929	0.069015664	0.032835065
		2013	1,239,822	43,436	0.035034061	0.026588235
		2014	1,062,476	33,145	0.031195999	0.026949125
		2015	1,358,464	8,496	0.006254122	0.026167374
25	KBLI	2006	441,085	68,940	0.156296405	
		2007	499368	41,519	0.083143093	
		2008	489802	48,218	0.098443861	
		2009	490722	32,640	0.066514238	
		2010	958,737	66,716	0.069587384	0.036628982
		2011	1083524	94,128	0.086872095	0.013071047
		2012	1,161,698	172,555	0.148536883	0.033152183
		2013	1,337,022	105,179	0.078666619	0.033663948
		2014	1,337,351	94,275	0.070493834	0.033009489
		2015	1,551,800	150,049	0.096693517	0.030800224
26	SCCO	2006	673,668	73,337	0.108862229	
		2007	1293677	77,748	0.060098464	
		2008	1126782	25,151	0.022321088	
		2009	1042755	20,110	0.019285451	
		2010	1,157,613	82,758	0.071490213	0.037190523
		2011	1455621	145,106	0.099686663	0.034049091
		2012	1,486,921	224,676	0.151101504	0.055379732
		2013	1,762,032	145,159	0.082381591	0.047677712
		2014	1,656,007	182,347	0.110112457	0.030794866
		2015	1,773,144	206,056	0.1162094	0.025392057
27	AISA	2006	363,933	1,195	0.003283571	
		2007	515609	38,002	0.073703136	
		2008	357786	52,975	0.148063367	
		2009	1347036	52,443	0.038932144	
		2010	1,936,950	94,187	0.048626449	0.054085817
		2011	3590309	185,179	0.051577455	0.044286736
		2012	3,867,576	324,465	0.083893633	0.044607649
		2013	5,020,824	449,586	0.089544266	0.022673222
		2014	7,371,846	484,592	0.065735502	0.018485453
		2015	9,060,979	500,435	0.055229683	0.016937521
28	CEKA	2006	280,807	19,427	0.069182748	
		2007	613680	36,140	0.058890627	
		2008	605545	42,446	0.070095534	
		2009	568363	70,089	0.123317317	
		2010	850,470	40,351	0.04744553	0.029171276
		2011	823361	130,254	0.158197923	0.047231434
		2012	1,027,693	83,714	0.081458179	0.044313674

		2013	1,069,627	86,553	0.080918862	0.042969611
		2014	1,284,150	57,073	0.044444185	0.045855266
		2015	1,485,826	142,271	0.095752127	0.041507836
29	DLTA	2006	571,243	60,756	0.10635754	
		2007	592359	66,622	0.112468959	
		2008	698297	117,738	0.16860734	
		2009	760426	178,005	0.234085894	
		2010	708,584	192,972	0.272334684	0.073411291
		2011	696167	204,871	0.294284274	0.075155223
		2012	745,307	287,505	0.38575379	0.079936347
		2013	867,041	358,396	0.413355308	0.076408903
		2014	991,947	379,519	0.382600078	0.062230575
		2015	1,038,322	250,198	0.240963786	0.072680408
30	INDF	2006	16,267,483	1,221,206	0.075070372	
		2007	29527466	2,041,409	0.069135936	
		2008	14786084	2,599,823	0.175829043	
		2009	40382953	4,063,813	0.100631893	
		2010	47,275,955	5,432,375	0.114907779	0.042701421
		2011	53585933	6,352,389	0.118545832	0.038792485
		2012	59,324,207	6,309,756	0.106360562	0.030220479
		2013	78,092,789	4,666,958	0.059761702	0.023591088
		2014	85,938,885	6,229,297	0.072485197	0.026583429
		2015	91,831,526	4,962,084	0.054034646	0.028704908
31	MLBI	2006	610,437	111,061	0.181936875	
		2007	621835	131,151	0.210909646	
		2008	941389	313,976	0.333524186	
		2009	993465	472,491	0.47559904	
		2010	1,137,082	594,162	0.522532236	0.152704989
		2011	1220813	680,487	0.557404779	0.144638366
		2012	1,152,048	607,261	0.527114322	0.088660109
		2013	1,782,148	1,576,945	0.884856364	0.16548075
		2014	2,231,051	1,078,378	0.483349776	0.16413098
		2015	2,100,853	675,572	0.321570334	0.205676736
32	MYOR	2006	1,553,377	141,744	0.091248937	
		2007	1893175	209,828	0.110833917	
		2008	2922998	274,070	0.093763321	
		2009	3246498	503,934	0.155223875	
		2010	4,399,191	658,359	0.149654561	0.030491857
		2011	6599846	626,441	0.094917518	0.029655378
		2012	8,302,506	959,815	0.115605457	0.029326277
		2013	9,709,838	1,356,073	0.139659694	0.025242404

		2014	10,291,108	529,701	0.051471717	0.039167274
		2015	11,342,716	1,640,495	0.144629822	0.037949384
33	SKLT	2006	161,879	4,747	0.029324372	
		2007	182697	2,066	0.011308341	
		2008	201003	7,367	0.036651194	
		2009	196,186	12,411	0.063261395	
		2010	199,375	6,172	0.03095674	0.018767266
		2011	214,238	8,017	0.037420999	0.018578934
		2012	249,746	11,664	0.046703451	0.012656148
		2013	301,989	16,598	0.054962267	0.013004685
		2014	331,575	23,544	0.07100656	0.015665435
		2015	377,111	27,376	0.072594011	0.015262665
		34	STTP	2006	467,491	21,009
2007	517448			23,257	0.044945579	
2008	626750			3,678	0.005868369	
2009	548720			39,836	0.072598046	
2010	649,274			46,173	0.071114814	0.027078911
2011	934766			60,382	0.064595845	0.027955542
2012	1,249,841			93,117	0.074503077	0.029233186
2013	1,470,059			142,799	0.097138278	0.012395162
2014	1,700,204			167,765	0.098673453	0.015665311
2015	1,919,568			232,005	0.120863132	0.022122246
35	ULTJ	2006	1,249,080	25,814	0.02066641	
		2007	1,362,830	39,103	0.0286925	
		2008	1254444	268,782	0.214263849	
		2009	1732702	98,279	0.056720082	
		2010	2,006,596	202,924	0.101128478	0.079176826
		2011	2179182	156,818	0.071961865	0.071856139
		2012	2,420,793	457,970	0.189181809	0.070920285
		2013	2,811,621	436,720	0.155326767	0.056058776
		2014	2,917,084	375,357	0.128675417	0.045675212
		2015	3,539,996	700,675	0.197931015	0.050980568
36	GGRM	2006	21,733,034	1,603,431	0.073778516	
		2007	23928968	2,204,841	0.092141082	
		2008	22128851	2,656,344	0.120039852	
		2009	27230965	4,828,213	0.177305982	
		2010	30,741,679	5,631,296	0.183181146	0.049388568
		2011	39088705	6,614,971	0.16922973	0.040151349
		2012	41,509,325	5,530,646	0.13323864	0.02818334
		2013	50,770,251	5,936,204	0.116922881	0.029209943
		2014	58,220,600	7,205,845	0.123767962	0.029248821

		2015	63,505,413	8,635,275	0.135976991	0.020157199
37	HMSP	2006	12,659,804	5,344,895	0.422194135	
		2007	15680542	5,345,073	0.340872975	
		2008	16133819	5,797,289	0.359325278	
		2009	17716447	7,213,466	0.407162113	
		2010	20,525,123	8,748,229	0.42622054	0.03869968
		2011	19329758	10,911,082	0.564470698	0.088058273
		2012	26,247,527	13,383,257	0.509886398	0.082544126
		2013	27,404,594	14,509,710	0.529462688	0.067815627
		2014	28,380,630	13,718,299	0.483368375	0.051976733
		2015	38,010,724	13,932,644	0.366545083	0.075466822
		38	DVLA	2006	557,338	83,376
2007	560931			77,309	0.137822656	
2008	550629			109,200	0.19831865	
2009	783613			114,093	0.145598656	
2010	848,257			153,869	0.181394318	0.025985952
2011	928291			166,325	0.179173341	0.025665634
2012	1,074,691			204,477	0.190265853	0.020134112
2013	1,190,054			175,757	0.147688256	0.020682185
2014	1,236,248			105,866	0.085634921	0.042932789
2015	1,376,278			144,438	0.104948274	0.045531886
39	KAEF	2006	1,261,584	67,629	0.053606419	
		2007	1386739	82,290	0.059340655	
		2008	1177603	96,106	0.081611545	
		2009	1562625	99,730	0.063822094	
		2010	1,657,292	178,611	0.1077728	0.021965672
		2011	1794242	232,007	0.129306415	0.029762552
		2012	2,080,558	271,688	0.130584199	0.029442084
		2013	2,471,940	284,125	0.114940088	0.02718297
		2014	2,968,185	315,611	0.10633131	0.011576778
		2015	3,236,224	338,135	0.104484424	0.012355146
40	KLBF	2006	4,624,619	1,090,081	0.235712607	
		2007	5138213	1,158,667	0.225499994	
		2008	4633399	1,178,022	0.254245749	
		2009	6482447	1,471,072	0.226931589	
		2010	7,032,497	1,770,435	0.251750552	0.013542206
		2011	8274554	1,987,259	0.240165089	0.013432067
		2012	9,417,957	2,308,017	0.24506557	0.010857496
		2013	11,315,061	2,572,523	0.227353878	0.010945505
		2014	12,425,032	2,763,701	0.222430091	0.012220441
		2015	13,696,417	2,720,881	0.198656408	0.018191342

41	MERK	2006	282,699	123,651	0.437394543	
		2007	331062	128,290	0.387510497	
		2008	375064	143,003	0.381276262	
		2009	433971	207,925	0.479121877	
		2010	434,768	157,318	0.361843558	0.04789713
		2011	584389	283,227	0.484654913	0.058323806
		2012	569,431	145,915	0.256247026	0.094374861
		2013	696,946	234,708	0.336766407	0.097752177
		2014	716,600	205,058	0.286154061	0.088310303
		2015	641,647	193,941	0.302254978	0.089504167
42	PYFA	2006	83,127	2,823	0.033960085	
		2007	95157	2,624	0.027575481	
		2008	98655	3,646	0.036957073	
		2009	99937	5,430	0.054334231	
		2010	100,587	5,638	0.056050981	0.012722515
		2011	118034	7,085	0.060025078	0.013995852
		2012	135,850	7,972	0.05868237	0.009352604
		2013	175,119	8,500	0.048538422	0.004492397
		2014	172,737	4,207	0.024354944	0.014758069
		2015	159,952	4,555	0.028477293	0.016732108
43	SQBI	2006	207,136	63,736	0.30770122	
		2007	227422	77,499	0.340771781	
		2008	294725	138,604	0.470282467	
		2009	318934	182,008	0.570676065	
		2010	320,023	124,656	0.389522003	0.106018922
		2011	361,756	161,086	0.44528909	0.087121725
		2012	318,934	182,008	0.570676065	0.079841096
		2013	320,023	124,656	0.389522003	0.091905087
		2014	361,756	161,086	0.44528909	0.07399907
		2015	397,144	180,898	0.45549725	0.066448409
44	TSPC	2006	2,479,251	365,708	0.147507453	
		2007	2773136	397,280	0.143260194	
		2008	2345760	440,883	0.187948895	
		2009	3263103	480,586	0.147278832	
		2010	3,589,596	629,493	0.175365974	0.020093508
		2011	4250374	740,100	0.174125853	0.019379561
		2012	4,632,985	812,380	0.175346996	0.01493782
		2013	5,407,958	829,935	0.153465504	0.013645616
		2014	5,592,730	742,733	0.1328033	0.018900181
		2015	6,284,729	707,111	0.112512568	0.027096869
45	TCID	2006	672,197	142,946	0.212654921	

		2007	725197	160,762	0.221680454	
		2008	545695	168,520	0.308817196	
		2009	994620	176,152	0.177104824	
		2010	1,047,238	173,525	0.165697769	0.056335037
		2011	1130865	190,143	0.168139433	0.060588165
		2012	1,261,573	203,263	0.161118699	0.063237123
		2013	1,465,952	218,298	0.148912106	0.010338168
		2014	1,853,235	239,429	0.129195164	0.016021292
		2015	2,082,097	583,122	0.280064762	0.059215964
46	UNVR	2006	4,626,000	2,464,792	0.532812797	
		2007	5333406	2,821,441	0.52901298	
		2008	3842351	3,448,405	0.897472667	
		2009	7484990	4,248,590	0.567614653	
		2010	8,701,262	4,538,643	0.52160744	0.161838361
		2011	10482312	5,574,799	0.531829142	0.161955753
		2012	11,984,979	6,466,765	0.539572493	0.160707734
		2013	7,485,249	7,158,808	0.956388759	0.18692747
		2014	14,280,670	7,676,722	0.537560353	0.189633498
		2015	15,729,945	7,829,490	0.497744271	0.192918664
47	KDSI	2006	439,737	12,478	0.028376052	
		2007	542,060	21,812	0.040239088	
		2008	485,722	12,899	0.026556343	
		2009	550,691	16,530	0.030016833	
		2010	557,725	19,418	0.034816442	0.005534308
		2011	587,567	30,949	0.052673142	0.010230397
		2012	570,564	47,635	0.083487567	0.023490624
		2013	850,234	47,176	0.055485902	0.021095779
		2014	952,177	57,978	0.06088994	0.017526694
		2015	1,177,094	14,890	0.012649797	0.025623043

Lampiran 2 (lanjutan...)

Data Perhitungan Struktur Aktiva Perusahaan dengan Proksi Sta
tahun 2010 – 2015

$$\text{Struktur aktiva} = \frac{\text{aktiva tetap}}{\text{total aktiva}}$$

NO	PERUSAHAAN	Aset Tetap	Total Aset	STA
1	INTP	7,702,770	15,346,146	0.50193514
		7,638,064	18151331	0.42079911
		7,935,224	22,755,160	0.34872196
		9,304,992	26,607,241	0.34971653
		12,143,632	28,884,973	0.42041348
		13,813,892	27,638,360	0.49980867
2	SMCB	7,893,251	10,437,249	0.7562578
		8,238,252	10950501	0.75231736
		9,588,783	12,168,517	0.78799931
		12,367,323	14,894,990	0.83030086
		14,498,240	17,195,352	0.84314878
		14,427,080	17,321,565	0.83289703
3	SMGR	7,662,560	15,562,999	0.49235755
		11,640,692	19661603	0.59205203
		16,794,115	26,579,084	0.63185454
		18,862,518	30,792,884	0.61256094
		20,221,067	34,314,666	0.58928352
		25,167,683	38,153,119	0.65964942
4	ARNA	568,502	873,154	0.65109019
		564,891	831,508	0.67935726
		598,525	937,360	0.63852202
		705,761	1,135,245	0.62168166
		736,206	1,259,175	0.5846733
		884,792	1,430,779	0.61839879
5	TOTO	362,067	1,091,583	0.33168985
		476,327	1339570	0.35558202
		461,182	1,522,664	0.30287838
		558,783	1,746,178	0.32000346
		807,117	2,027,289	0.39812627
		875,127	2,439,541	0.35872609
6	BTON	7,088	89,824	0.07890987
		9,849	118,716	0.0829627

		14,720	145,101	0.10144658
		14,894	176,136	0.08455966
		14,238	174,158	0.08175335
		13,160	183,116	0.07186701
7	LION	18,209	303,900	0.05991774
		18,552	365,816	0.05071402
		30,424	433,497	0.07018272
		60,441	498,568	0.1212292
		101,606	600,103	0.16931427
		112,955	639,330	0.17667715
8	LMSH	23,302	78,200	0.29797954
		20,218	15,148	1.33469765
		23,737	128,548	0.18465476
		23,306	141,698	0.16447656
		29,522	139,916	0.21099803
		27,800	133,783	0.2077992
9	PICO	207,995	570,360	0.36467319
		185,384	561,840	0.32995871
		170,466	594,616	0.2866825
		161,999	621,400	0.26070003
		139,160	626,627	0.22207789
		132,333	605,788	0.21844771
10	BUDI	1,117,614	1,967,633	0.56799922
		1,210,049	2,123,285	0.56989476
		1,271,236	2,299,672	0.55279014
		1,271,806	1,288,796	0.98681715
		1,480,942	2,476,982	0.59788162
		1,712,330	3,265,953	0.5242972
11	EKAD	67,542	204,470	0.33032719
		74,432	237,592	0.31327654
		85,361	273,893	0.3116582
		104,498	114,560	0.9121683
		105,346	411,349	0.25609884
		96,596	389,692	0.24787781
12	SRSN	92,167	364,005	0.25320257
		85,640	361,182	0.23711038
		80,471	402,109	0.20012235
		118,273	125,993	0.93872675
		122	463,347	0.0002633
		125,627	574,073	0.21883454
13	AKPI	725,051	1,320,417	0.54910759

		743,001	1556601	0.47732271
		808,101	1,714,834	0.47124153
		996,051	2,084,567	0.47782153
		1,060,731	2,227,043	0.4762957
		1,692,447	2,883,143	0.58701459
14	TRST	1,202,165	1,965,891	0.61151152
		1,232,156	2078643	0.59276942
		1,266,887	2,188,129	0.57898186
		1,991,932	3,260,920	0.6108497
		1,980,023	3,261,285	0.60712971
		2,101,160	3,357,359	0.62583715
15	CPIN	1,930,069	6,518,276	0.29610115
		3,198,604	8848204	0.36149754
		4,593,000	12,348,627	0.37194418
		6,389,545	15,722,197	0.40640281
		9,058,302	20,862,439	0.4341919
		11,123,465	24,684,915	0.45061792
16	JPFA	2,224,592	6,981,107	0.31865892
		2,933,581	8266417	0.35487939
		4,064,770	10,961,464	0.37082364
		5,272,131	14,917,590	0.35341707
		6,361,632	15,730,435	0.40441552
		6,808,971	17,159,466	0.39680553
17	ASII	22,141,000	112,857,000	0.19618632
		28,804,000	153521000	0.18762254
		34,326,000	182,274,000	0.18832088
		37,862,000	213,994,000	0.17693019
		41,250,000	236,029,000	0.17476666
		41,702,000	245,435,000	0.16991057
18	AUTO	985,029	5,585,852	0.17634356
		1,547,831	6964227	0.22225453
		2,084,184	8,881,642	0.23466201
		3,182,962	12,617,678	0.2522621
		3,305,968	14,380,926	0.22988561
		3,507,217	14,339,110	0.24459098
19	BRAM	724,663	1,778,226	0.40752019
		712,670	1660119	0.4292885
		1,262,484	2,223,454	0.56780307
		102,323	2,932,878	0.03488826
		2,270,767	3,833,995	0.59227177
		2,565,895	4,277,420	0.59986978

20	INDS	184,786	769,816	0.24003918
		340,926	1,139,715	0.29913268
		756,098	1,664,779	0.4541732
		1,061,635	2,196,518	0.48332634
		1,247,325	2,282,666	0.54643342
		1,447,375	2,553,928	0.56672506
21	NIPS	155,548	337,606	0.46073826
		175,431	446688	0.39273721
		213,872	525,629	0.40688775
		256,657	798,408	0.32146096
		450,149	1,206,854	0.37299375
		593,105	1,547,720	0.38321208
22	SMSM	452,403	1,218,731	0.37120825
		490,753	1,327,800	0.36959858
		488,863	1,441,204	0.33920458
		492,165	1,701,103	0.28932111
		492,897	1,749,395	0.28175283
		714,935	2,220,108	0.32202713
23	BATA	167,843	484,253	0.34660188
		169,555	516649	0.32818219
		187,893	574,108	0.32727814
		210,124	680,685	0.30869492
		245,226	774,891	0.31646515
		234,746	795,258	0.29518219
24	JECC	79,813	561,999	0.14201627
		79,980	627038	0.12755208
		72,164	708,955	0.10178925
		136,292	1,239,822	0.10992868
		121,783	1,062,476	0.11462188
		396,189	1,358,464	0.29164483
25	KBLI	390,686	958,737	0.4075007
		388,023	1083524	0.35811205
		390,545	1,161,698	0.33618462
		393,273	1,337,022	0.29414101
		411,559	1,337,351	0.30774195
		552,111	1,551,800	0.35578747
26	SCCO	188,389	1,157,613	0.16273919
		203,108	1455621	0.13953357
		224,806	1,486,921	0.15118893
		254,394	1,762,032	0.14437536
		295,398	1,656,007	0.17837968

		317,988	1,773,144	0.17933569
27	AISA	620,043	1,936,950	0.32011306
		933,668	3590309	0.26005227
		1,233,721	3,867,576	0.31899076
		1,443,553	5,020,824	0.28751317
		1,785,691	7,371,846	0.24223119
		2,290,408	9,060,979	0.2527771
28	CEKA	197,190	850,470	0.23186003
		202,894	823361	0.24642168
		202,837	1,027,693	0.1973712
		215,530	1,069,627	0.20150015
		221,560	1,284,150	0.17253436
		221,003	1,485,826	0.14874084
29	DLTA	113,940	708,584	0.16079957
		98,160	696167	0.14100065
		95,121	745,307	0.1276266
		93,079	867,041	0.10735248
		113,596	991,947	0.11451822
		105,314	1,038,322	0.10142711
30	INDF	11,737,142	47,275,955	0.24826874
		12,921,013	53585933	0.24112696
		13,080,544	59,324,207	0.22049252
		19,471,309	78,092,789	0.24933556
		22,681,686	85,938,885	0.26392809
		25,107,538	91,831,526	0.2734087
31	MLBI	528,879	1,137,082	0.46511949
		547,202	1220813	0.44822753
		652,832	1,152,048	0.56667083
		1,010	1,782,148	0.00056673
		1,315,305	2,231,051	0.58954502
		1,266,072	2,100,853	0.60264664
32	MYOR	1,489,561	4,399,191	0.33859885
		2,038,407	6599846	0.30885675
		2,857,933	8,302,506	0.34422535
		3,114,329	9,709,838	0.32073954
		3,585,012	10,291,108	0.34836016
		3,770,696	11,342,716	0.33243325
33	SKLT	97,002	199,375	0.48653041
		100,332	214,238	0.46832028
		101,729	249,746	0.40732985
		126,032	301,989	0.4173397

		135,211	331,575	0.40778406
		148,557	377,111	0.39393441
34	STTP	319,076	649,274	0.49143505
		579,813	934766	0.62027609
		651,322	1,249,841	0.52112389
		757,396	1,470,059	0.5152147
		862,322	1,700,204	0.50718737
		1,006,245	1,919,568	0.52420388
		35	ULTJ	941,932
1,069,736	2179182			0.49088878
979,512	2,420,793			0.40462444
965,975	2,811,621			0.34356515
1,003,229	2,917,084			0.34391502
1,160,713	3,539,996			0.3278854
36	GGRM	7,406,632	30,741,679	0.24093128
		8,189,881	39088705	0.2095204
		10,389,326	41,509,325	0.25028897
		14,788,915	50,770,251	0.29129096
		18,973,272	58,220,600	0.32588589
		20,106,488	63,505,413	0.31661062
37	HMSP	4,087,338	20,525,123	0.1991383
		3,850,665	19329758	0.19920917
		4,115,078	26,247,527	0.15677965
		4,708,669	27,404,594	0.17182043
		5,919,600	28,380,630	0.20857888
		6,281,176	38,010,724	0.16524747
38	DVLA	171,652	848,257	0.20235848
		199,878	928291	0.21531826
		218,295	1,074,691	0.2031235
		243,055	1,190,054	0.20423863
		267,040	1,236,248	0.21600844
		258,265	1,376,278	0.18765467
39	KAEF	413,197	1,657,292	0.24932058
		426,720	1794242	0.23782745
		447,978	2,080,558	0.21531628
		498,644	2,471,940	0.20172172
		557,939	2,968,185	0.18797312
		681,743	3,236,224	0.21066002
40	KLBF	1,605,266	7,032,497	0.22826401
		1,860,288	8274554	0.22482033
		2,254,763	9,417,957	0.23941105

		2,925,547	11,315,061	0.25855336
		3,404,457	12,425,032	0.27399986
		3,938,494	13,696,417	0.28755652
41	MERK	67,053	434,768	0.15422708
		61,536	584389	0.10529972
		63,318	569,431	0.11119521
		61,627	696,946	0.08842435
		81,385	716,600	0.11357103
		110,784	641,647	0.17265568
42	PYFA	52,827	100,587	0.52518715
		55,114	118034	0.46693326
		66,154	135,850	0.48696356
		97,554	175,119	0.55707262
		91,716	172,737	0.53095747
		84,152	159,952	0.52610783
43	SQBI	74,886	320,023	0.23400193
		78,358	361,756	0.21660456
		64,568	318,934	0.20244941
		74,886	320,023	0.23400193
		78,358	361,756	0.21660456
		84,893	397,144	0.21375874
44	TSPC	760,788	3,589,596	0.21194251
		886,135	4250374	0.20848401
		1,000,822	4,632,985	0.21602099
		1,203,852	5,407,958	0.2226075
		1,554,390	5,592,730	0.27793046
		1,616,562	6,284,729	0.25722064
45	TCID	396,756	1,047,238	0.37885944
		416,328	1130865	0.36815004
		440,133	1,261,573	0.34887636
		684,460	1,465,952	0.46690478
		923,952	1,853,235	0.4985617
		902,695	2,082,097	0.43355089
46	UNVR	4,148,778	8,701,262	0.47680187
		5,314,311	10482312	0.5069789
		6,283,479	11,984,979	0.52427952
		6,874,177	7,485,249	0.91836317
		7,348,025	14,280,670	0.51454344
		8,320,917	15,729,945	0.52898577
47	KDSI	177,454	557,725	0.31817473
		180,174	587,567	0.30664418

		171,839	570,564	0.30117393
		342,883	850,234	0.40328074
		377,745	952,177	0.39671721
		403,005	1,177,094	0.34237283

Lampiran 3 : Data Perusahaan Sebelum di Outlier

NO	PERUSAHAAN	TAHUN	DER	ROA	CR	SIZE	BRISK	STA
1	INTP	2010	0.171712	0.21013	5.553739	16.22586	0.085076	0.501935
		2011	0.153641	0.198416	6.985368	16.44653	0.060349	0.420799
		2012	0.171815	0.209332	6.027629	16.66566	0.031622	0.348722
		2013	0.15796	0.188381	6.148066	16.74357	0.015122	0.349717
		2014	0.165431	0.182587	4.933747	16.81106	0.017651	0.420413
		2015	0.158067	0.157631	4.886574	16.6946	0.02657	0.499809
2	SMCB	2010	0.529306	0.081249	1.661888	15.60068	0.065394	0.756258
		2011	0.454779	0.096341	1.465835	15.8336	0.064783	0.752317
		2012	0.445526	0.111007	1.404607	16.01397	0.052758	0.787999
		2013	0.697832	0.063935	0.639185	16.08622	0.035175	0.830301
		2014	0.963255	0.038898	0.601692	16.16962	0.038345	0.843149
		2015	1.049924	0.011517	0.652385	16.03895	0.055696	0.832897
3	SMGR	2010	0.285118	0.235116	2.9179	16.47886	0.042623	0.492358
		2011	0.345294	0.201167	2.646515	16.6115	0.038659	0.592052
		2012	0.463215	0.185358	1.705896	16.79095	0.051827	0.631855
		2013	0.41226	0.173881	1.882372	17.01423	0.055204	0.612561
		2014	0.372452	0.162426	2.20898	17.11087	0.037273	0.589284
		2015	0.390379	0.118613	1.596969	17.10942	0.039842	0.659649
4	ARNA	2010	1.120818	0.091752	0.971598	13.6294	0.013163	0.65109
		2011	0.72093	0.115392	1.015894	13.73504	0.022198	0.679357
		2012	0.549847	0.169288	0.604116	13.92317	0.049579	0.638522
		2013	0.477241	0.20938	1.299329	14.1645	0.071573	0.621682
		2014	0.380326	0.207796	1.607543	14.2916	0.070349	0.584673
		2015	0.599122	0.04977	1.020687	14.07164	0.090042	0.618399
5	TOTO	2010	0.729975	0.178088	2.027858	13.93018	0.079845	0.33169
		2011	0.761338	0.163279	1.882691	14.10962	0.08135	0.355582
		2012	0.695305	0.154956	2.154356	14.27088	0.066024	0.302878
		2013	0.686069	0.135472	2.194985	14.35277	0.02519	0.320003
		2014	0.646606	0.144925	2.108495	14.53512	0.022792	0.398126
		2015	0.635582	0.116922	2.406744	14.6391	0.026726	0.358726
6	BTON	2010	0.227204	0.093438	3.597305	11.75915	0.148612	0.07891
		2011	0.28864	0.16093	3.137564	11.94241	0.113536	0.082963
		2012	0.282049	0.170654	3.295909	11.95122	0.112759	0.101447
		2013	0.268836	0.146949	3.630823	11.63998	0.036586	0.08456
		2014	0.18765	0.043811	5.055318	11.47219	0.069143	0.081753
		2015	0.228108	0.034535	4.357628	11.12255	0.087127	0.071867
7	LION	2010	0.169165	0.127117	8.721322	12.24449	0.027365	0.059918
		2011	0.211067	0.14361	7.102789	12.50029	0.025347	0.050714

		2012	0.16585	0.196943	9.344671	12.71866	0.034364	0.070183
		2013	0.199103	0.129894	6.72882	12.71792	0.03119	0.121229
		2014	0.351647	0.081656	3.694669	12.84165	0.047974	0.169314
		2015	0.406176	0.07198	3.802302	12.87198	0.060546	0.176677
8	LMSH	2010	0.671476	0.094003	2.444496	11.98923	0.042913	0.29798
		2011	0.713529	0.719369	2.35497	12.243	0.387468	1.334698
		2012	0.318103	0.321149	4.067463	12.31528	0.376108	0.184655
		2013	0.282706	0.101505	4.196555	12.45376	0.382766	0.164477
		2014	0.206674	0.05291	5.568012	12.4255	0.383549	0.210998
		2015	0.189797	0.014531	8.089127	12.07025	0.399998	0.207799
9	PICO	2010	2.25028	0.02115	1.026561	13.28162	0.013598	0.364673
		2011	1.989878	0.021933	1.162496	13.33946	0.003578	0.329959
		2012	1.986324	0.018731	1.241422	13.2934	0.003596	0.286682
		2013	1.889762	0.024846	1.313494	13.43637	0.003548	0.2607
		2014	1.711481	0.025779	1.658506	13.45071	0.00324	0.222078
		2015	1.45168	0.02472	1.587871	13.45785	0.003277	0.218448
10	BUDI	2010	1.528265	0.023444	1.029338	14.56899	0.0347	0.567999
		2011	1.618007	0.027847	1.250391	14.73339	0.034846	0.569895
		2012	1.692399	0.002211	1.131628	14.6464	0.040759	0.55279
		2013	1.692146	0.033276	1.076254	14.75901	0.039707	0.986817
		2014	1.711972	0.011506	1.04593	14.64153	0.014918	0.597882
		2015	1.954942	0.006452	1.000842	14.68211	0.014236	0.524297
11	EKAD	2010	0.744175	0.201653	1.762587	12.44618	0.046653	0.330327
		2011	0.609207	0.116788	1.903629	12.70217	0.050157	0.313277
		2012	0.426695	0.132161	2.410926	12.86109	0.050184	0.311658
		2013	0.445479	0.34437	2.328717	12.94484	0.133598	0.912168
		2014	0.505675	0.099079	2.329598	13.17415	0.13306	0.256099
		2015	0.334736	0.120711	3.568799	13.18353	0.132544	0.247878
12	SRSN	2010	0.594746	0.027005	2.423875	12.74511	0.038896	0.253203
		2011	0.431898	0.066415	3.174826	12.86709	0.036	0.23711
		2012	0.493696	0.042168	2.752078	12.85878	0.027901	0.200122
		2013	0.33847	0.126944	3.281267	12.87982	0.086856	0.938727
		2014	0.409052	0.031199	2.870994	13.0665	0.088894	0.000263
		2015	0.688053	0.027009	2.167071	13.1836	0.089428	0.218835
13	AKPI	2010	0.897527	0.051499	1.775377	13.91026	0.033401	0.549108
		2011	1.058663	0.032901	1.396734	14.22467	0.027938	0.477323
		2012	1.033561	0.018145	1.404432	14.22708	0.022317	0.471242
		2013	1.025157	0.016608	1.359136	14.32437	0.025796	0.477822
		2014	1.149975	0.015577	1.13194	14.48097	0.016657	0.476296
		2015	1.603134	0.009588	1.030634	14.51735	0.01146	0.587015
14	TRST	2010	0.617759	0.06955	1.231739	14.37256	0.042951	0.611512

		2011	0.607672	0.069276	1.393783	14.52151	0.042744	0.592769
		2012	0.617252	0.028085	1.30332	14.48291	0.03672	0.578982
		2013	0.90733	0.010109	1.14294	14.5251	0.033102	0.61085
		2014	0.851432	0.009225	1.237775	14.73495	0.034518	0.60713
		2015	0.715634	0.00754	1.308475	14.71459	0.029494	0.625837
15	CPIN	2010	0.456717	0.34056	3.079185	16.52874	0.187135	0.296101
		2011	0.429558	0.267003	3.332321	16.70354	0.18092	0.361498
		2012	0.510265	0.217099	3.31275	16.87473	0.143175	0.371944
		2013	0.579977	0.160836	3.792315	17.06056	0.0885	0.406403
		2014	0.906414	0.083722	2.240683	17.18797	0.124331	0.434192
		2015	0.965136	0.07424	2.106176	17.22029	0.10676	0.450618
16	JPFA	2010	1.136604	0.154771	2.6295	16.45141	0.07072	0.318659
		2011	1.183794	0.078652	1.591069	16.5649	0.070405	0.354879
		2012	1.30122	0.098032	1.824546	16.69654	0.062991	0.370824
		2013	1.844034	0.042945	2.064559	16.87947	0.064216	0.353417
		2014	1.973621	0.024465	1.771465	17.0125	0.066203	0.404416
		2015	1.808565	0.030565	1.794274	17.0353	0.040026	0.396806
17	ASII	2010	1.09852	0.152893	1.284003	18.68298	0.058008	0.196186
		2011	1.024328	0.139056	1.363999	18.90658	0.03467	0.187623
		2012	1.029461	0.124768	1.399073	19.05223	0.037585	0.188321
		2013	1.015237	0.104195	1.241963	19.08275	0.023576	0.17693
		2014	0.961612	0.093738	1.322593	19.1223	0.028595	0.174767
		2015	0.939692	0.063614	1.379305	19.03151	0.03415	0.169911
18	AUTO	2010	0.384038	0.219596	1.726651	15.64891	0.054277	0.176344
		2011	0.474568	0.158761	1.354834	15.81207	0.039805	0.222255
		2012	0.619231	0.127895	1.164936	15.92905	0.047492	0.234662
		2013	0.320013	0.083852	1.889864	16.18594	0.057104	0.252262
		2014	0.418719	0.066505	1.331865	16.32148	0.068305	0.229886
		2015	0.413636	0.022505	1.322916	16.27713	0.057943	0.244591
19	BRAM	2010	0.309693	0.092715	4.011025	14.40627	0.040095	0.40752
		2011	0.381447	0.033118	2.788813	14.45748	0.029205	0.429289
		2012	0.355553	0.098056	2.127575	14.33662	0.017456	0.567803
		2013	0.467681	0.023187	1.571353	14.71407	0.034083	0.034888
		2014	0.725703	0.051529	1.415624	14.76453	0.034071	0.592272
		2015	0.595302	0.043085	1.806469	14.92957	0.0269	0.59987
20	INDS	2010	2.390955	0.090983	1.285827	13.84227	0.056737	0.240039
		2011	0.802636	0.105654	2.404038	14.02657	0.050553	0.299133
		2012	0.464736	0.080532	2.333918	14.20552	0.036439	0.454173
		2013	0.253101	0.067201	3.855908	14.34758	0.023177	0.483326
		2014	0.248506	0.055925	2.912226	14.43983	0.029853	0.546433
		2015	0.330837	0.000757	2.231266	14.32203	0.051782	0.566725

21	NIPS	2010	1.278551	0.037508	1.017116	12.90145	0.016613	0.460738
		2011	1.69093	0.039918	1.08355	13.26944	0.016815	0.392737
		2012	1.445776	0.041004	1.103391	13.46271	0.017743	0.406888
		2013	2.383859	0.042424	1.051103	13.72237	0.014718	0.321461
		2014	1.095618	0.041542	1.293854	13.83125	0.001835	0.372994
		2015	1.5414	0.019817	1.047323	13.8033	0.013024	0.383212
22	SMSM	2010	1.051435	0.123423	2.123803	14.26134	0.028662	0.371208
		2011	1.049159	0.124153	2.402825	14.26134	0.026199	0.369599
		2012	0.756862	0.186332	1.94424	14.5874	0.020778	0.339205
		2013	0.689615	0.198826	2.097616	14.67966	0.033121	0.289321
		2014	0.525409	0.240922	2.112016	14.78358	0.046409	0.281753
		2015	0.541476	0.207786	2.393789	14.84617	0.032826	0.322027
23	BATA	2010	0.460754	0.125916	2.084657	13.37575	0.265231	0.346602
		2011	0.457484	0.109581	2.127655	13.42778	0.260778	0.328182
		2012	0.481615	0.120784	2.123838	13.52976	0.25964	0.327278
		2013	0.715207	0.06519	1.692634	13.71288	0.03442	0.308695
		2014	0.805784	0.091343	1.552256	13.8242	0.034019	0.316465
		2015	0.453357	0.162864	2.470991	13.84395	0.037129	0.295182
24	JECC	2010	4.694869	0.001262	1.050533	13.63005	0.03528	0.142016
		2011	3.918061	0.045903	1.114087	14.05249	0.035512	0.127552
		2012	3.96203	0.044814	1.156151	14.02644	0.032835	0.101789
		2013	7.396458	0.018191	0.977858	14.21434	0.026588	0.109929
		2014	5.200438	0.022443	1.031992	14.21631	0.026949	0.114622
		2015	2.693927	0.001815	1.050051	14.32434	0.026167	0.291645
25	KBLI	2010	1.040884	0.050479	2.715262	14.02097	0.036629	0.407501
		2011	0.505047	0.058833	2.187525	14.42633	0.013071	0.358112
		2012	0.37444	0.107758	3.070765	14.6367	0.033152	0.336185
		2013	0.507949	0.054995	2.55016	14.76033	0.033664	0.294141
		2014	0.42157	0.052402	3.326353	14.68432	0.033009	0.307742
		2015	0.510471	0.074347	2.847607	14.7946	0.0308	0.355787
26	SCCO	2010	1.721562	0.052491	1.264651	14.60324	0.037191	0.162739
		2011	1.803298	0.07545	1.290955	15.02856	0.034049	0.139534
		2012	1.273425	0.114157	1.462059	15.08045	0.05538	0.151189
		2013	1.490114	0.059569	1.394167	15.13754	0.047678	0.144375
		2014	1.033426	0.083103	1.566265	15.12473	0.030795	0.17838
		2015	0.922415	0.089739	1.685817	15.07768	0.025392	0.179336
27	AISA	2010	2.339298	0.041336	1.285004	13.46627	0.054086	0.320113
		2011	0.958902	0.041765	1.893521	14.37673	0.044287	0.260052
		2012	0.901975	0.065587	1.269469	14.82625	0.044608	0.318991
		2013	1.130381	0.069058	1.750259	15.21589	0.022673	0.287513
		2014	1.051822	0.051295	2.663272	15.45256	0.018485	0.242231

		2015	1.284142	0.041248	1.622871	15.60908	0.016938	0.252777
28	CEKA	2010	1.754532	0.03476	1.672348	13.48451	0.029171	0.23186
		2011	1.032694	0.116967	1.686893	14.02914	0.047231	0.246422
		2012	1.217709	0.056772	1.02712	13.93198	0.044314	0.197371
		2013	1.024754	0.060833	1.632193	14.74447	0.04297	0.2015
		2014	1.38889	0.031929	1.465631	15.12435	0.045855	0.172534
		2015	1.321989	0.07171	1.534677	15.06419	0.041508	0.148741
		29	DLTA	2010	0.199466	0.206138	6.330794	13.21369
2011	0.205516			0.217929	6.009061	13.2429	0.075155	0.141001
2012	0.245891			0.286353	5.264618	14.35773	0.079936	0.127627
2013	0.281547			0.311978	4.705367	13.67287	0.076409	0.107352
2014	0.297557			0.290412	4.473226	13.68683	0.062231	0.114518
2015	0.222099			0.184957	6.423682	13.45813	0.07268	0.101427
30	INDF	2010	1.335928	0.084965	2.03649	17.46366	0.042701	0.248269
		2011	0.695209	0.093633	1.909528	17.62953	0.038792	0.241127
		2012	0.737538	0.080565	3.723846	17.72872	0.03022	0.220493
		2013	1.03509	0.043751	2.296225	17.87132	0.023591	0.249336
		2014	1.08446	0.059884	1.751178	17.96804	0.026583	0.263928
		2015	1.129595	0.040395	1.002947	17.97536	0.028705	0.273409
31	MLBI	2010	1.412743	0.389638	0.944963	14.39782	0.152705	0.465119
		2011	1.302257	0.41561	0.99419	14.43541	0.144638	0.448228
		2012	2.49261	0.393564	0.580499	14.26466	0.08866	0.566671
		2013	0.804647	0.657201	0.977455	15.08583	0.165481	0.000567
		2014	3.028644	0.356282	0.513906	14.91028	0.164131	0.589545
		2015	1.74091	0.236527	0.584216	14.8074	0.205677	0.602647
32	MYOR	2010	1.18467	0.114108	2.580762	15.79294	0.030492	0.338599
		2011	1.721957	0.073309	2.218722	16.06193	0.029655	0.308857
		2012	1.706295	0.089663	2.761124	16.1679	0.029326	0.344225
		2013	1.465201	0.109005	2.443362	16.3019	0.025242	0.32074
		2014	1.509687	0.039823	2.089937	16.46657	0.039167	0.34836
		2015	1.183618	0.110223	2.365337	16.5114	0.037949	0.332433
33	SKLT	2010	0.685263	0.024246	1.875387	12.65761	0.018767	0.48653
		2011	0.136201	0.027899	1.69742	12.74966	0.018579	0.46832
		2012	0.928801	0.031884	1.414771	12.90352	0.012656	0.40733
		2013	1.16247	0.037882	1.233836	13.2482	0.013005	0.41734
		2014	1.161957	0.049705	1.183801	13.43193	0.015665	0.407784
		2015	1.480259	0.053212	1.192455	13.52128	0.015263	0.393934
34	STTP	2010	0.451612	0.065659	1.709235	13.54451	0.027079	0.491435
		2011	0.907433	0.04565	1.034775	13.84282	0.027956	0.620276
		2012	1.156045	0.059708	0.997451	14.06529	0.029233	0.521124
		2013	1.11785	0.077845	1.142365	14.34315	0.012395	0.515215

		2014	1.079521	0.072618	1.484189	14.59045	0.015665	0.507187
		2015	0.902806	0.096743	1.57887	14.74936	0.022122	0.524204
35	ULTJ	2010	0.543527	0.053385	2.000683	14.447	0.079177	0.469418
		2011	0.650239	0.046496	1.520884	14.55858	0.071856	0.490889
		2012	0.44394	0.145998	2.018186	14.84864	0.07092	0.404624
		2013	0.395244	0.115637	2.470063	15.05685	0.056059	0.343565
		2014	0.28784	0.097138	3.344628	15.18078	0.045675	0.343915
		2015	0.265411	0.147769	3.745477	15.29574	0.050981	0.327885
		36	GGRM	2010	0.444465	0.137103	2.700834	17.44496
2011	0.592148			0.126842	2.244794	17.55042	0.040151	0.20952
2012	0.560166			0.098019	2.170217	17.70792	0.028183	0.250289
2013	0.725924			0.086348	1.722079	17.83076	0.02921	0.291291
2014	0.752117			0.09267	1.620165	17.99275	0.029249	0.325886
2015	0.670847			0.101611	1.770359	18.06921	0.020157	0.316611
37	HMSP	2010	1.009321	0.313676	1.612501	17.58555	0.0387	0.199138
		2011	0.899308	0.416511	1.74931	17.7831	0.088058	0.199209
		2012	0.97225	0.378904	1.77579	18.01461	0.082544	0.15678
		2013	0.936032	0.394769	1.752573	18.13333	0.067816	0.17182
		2014	1.102563	0.358734	1.527733	18.20613	0.051977	0.208579
		2015	0.187239	0.272642	6.567409	18.30493	0.075467	0.165247
38	DVLA	2010	0.324156	0.130716	3.75652	13.74208	0.025986	0.202358
		2011	0.27527	0.130255	4.830365	13.78742	0.025666	0.215318
		2012	0.277044	0.13856	4.3102	13.89928	0.020134	0.203124
		2013	0.301028	0.105706	4.241757	13.91235	0.020682	0.204239
		2014	0.284505	0.065463	5.181311	13.91429	0.042933	0.216008
		2015	0.413717	0.078395	3.522906	14.08255	0.045532	0.187655
39	KAEF	2010	0.487651	0.0837	2.425486	14.9736	0.021966	0.249321
		2011	0.432522	0.09573	2.747545	15.06288	0.029763	0.237827
		2012	0.447782	0.096751	2.825046	15.13335	0.029442	0.215316
		2013	0.521798	0.087236	2.426698	15.28524	0.027183	0.201722
		2014	0.638845	0.079689	2.386994	15.32425	0.011577	0.187973
		2015	0.737946	0.078169	1.93023	15.39663	0.012355	0.21066
40	KLBF	2010	0.23458	0.191411	4.388655	16.14052	0.013542	0.228264
		2011	0.269895	0.186079	3.652743	16.20536	0.013432	0.22482
		2012	0.277593	0.18848	3.405397	16.42825	0.010857	0.239411
		2013	0.33119	0.174144	2.839259	16.58823	0.010946	0.258553
		2014	0.265604	0.170711	3.403637	16.67017	0.01222	0.274
		2015	0.252154	0.150236	3.697775	16.69961	0.018191	0.287557
41	MERK	2010	0.197655	0.273235	6.227505	13.54066	0.047897	0.154227
		2011	0.182538	0.395557	7.515184	13.73053	0.058324	0.1053
		2012	0.164203	0.189326	3.87124	13.74281	0.094375	0.111195

		2013	0.15472	0.251734	3.979475	13.99278	0.097752	0.088424
		2014	0.188725	0.25324	4.58588	13.66841	0.08831	0.113571
		2015	0.170934	0.222155	3.652179	13.79882	0.089504	0.172656
42	PYFA	2010	0.302519	0.041745	3.008885	11.85551	0.012723	0.525187
		2011	0.432491	0.043818	2.539869	11.92566	0.013996	0.466933
		2012	0.548931	0.039073	2.413371	12.08238	0.009353	0.486964
		2013	0.864932	0.035382	1.536793	12.16814	0.004492	0.557073
		2014	0.788927	0.015388	1.626794	12.31179	0.014758	0.530957
		2015	0.5802	0.0193	1.991186	12.29153	0.016732	0.526108
43	SQBI	2010	0.189451	0.289489	5.688595	12.62889	0.106019	0.234002
		2011	0.195888	0.331878	5.800509	12.74202	0.087122	0.216605
		2012	0.210611	0.411555	5.452657	12.94728	0.079841	0.202449
		2013	0.189451	0.289489	5.688595	12.62889	0.091905	0.234002
		2014	0.195888	0.331878	5.800509	12.74202	0.073999	0.216605
		2015	0.220633	0.340554	4.854663	12.86756	0.066448	0.213759
44	TSPC	2010	0.362836	0.136196	3.28981	15.45144	0.020094	0.211943
		2011	0.395425	0.137708	3.082971	15.57003	0.01938	0.208484
		2012	0.381679	0.137099	30.92691	15.70724	0.014938	0.216021
		2013	0.399955	0.118073	2.961942	15.74047	0.013646	0.222607
		2014	0.353405	0.104474	3.002186	15.83203	0.0189	0.27793
		2015	0.449049	0.084207	2.537551	15.91738	0.027097	0.257221
45	TCID	2010	0.104122	0.125516	10.68448	14.19869	0.056335	0.378859
		2011	0.108242	0.123834	11.7429	14.31911	0.060588	0.36815
		2012	0.150208	0.119196	7.72656	14.43132	0.063237	0.348876
		2013	0.239192	0.109245	3.573192	14.52251	0.010338	0.466905
		2014	0.443887	0.094059	1.798189	14.65198	0.016021	0.498562
		2015	0.214141	0.261503	4.991109	14.65487	0.059216	0.433551
46	UNVR	2010	1.150044	0.388984	0.851279	16.79563	0.161838	0.476802
		2011	1.847729	0.39727	0.686718	16.9712	0.161956	0.506979
		2012	2.02013	0.403767	0.668263	17.12252	0.160708	0.52428
		2013	2.137303	0.71509	0.696357	17.24164	0.186927	0.918363
		2014	2.105316	0.401838	0.714866	17.3568	0.189633	0.514543
		2015	2.258498	0.372017	0.653971	17.41239	0.192919	0.528986
47	KDSI	2010	1.182531	0.030287	1.266374	13.93156	0.005534	0.318175
		2011	1.1047	0.040215	1.35816	13.98145	0.01023	0.306644
		2012	0.805548	0.064562	1.591054	14.0789	0.023491	0.301174
		2013	1.415376	0.042345	1.44455	14.14216	0.021096	0.403281
		2014	1.401467	0.046723	1.367937	14.30178	0.017527	0.396717
		2015	2.106434	0.009745	1.156607	14.35431	0.025623	0.342373

Lampiran 4 : Data Setelah di Outlier

NO	PERUSAHAAN	TAHUN	DER	ROA	CR	SIZE	BRISK	STA
1	INTP	2010	0.171712	0.21013	5.553739	16.22586	0.085076	0.501935
		2011	0.153641	0.198416	6.985368	16.44653	0.060349	0.420799
		2012	0.171815	0.209332	6.027629	16.66566	0.031622	0.348722
		2013	0.15796	0.188381	6.148066	16.74357	0.015122	0.349717
		2014	0.165431	0.182587	4.933747	16.81106	0.017651	0.420413
		2015	0.158067	0.157631	4.886574	16.6946	0.02657	0.499809
2	SMCB	2010	0.529306	0.081249	1.661888	15.60068	0.065394	0.756258
		2011	0.454779	0.096341	1.465835	15.8336	0.064783	0.752317
		2012	0.445526	0.111007	1.404607	16.01397	0.052758	0.787999
		2013	0.697832	0.063935	0.639185	16.08622	0.035175	0.830301
		2014	0.963255	0.038898	0.601692	16.16962	0.038345	0.843149
		2015	1.049924	0.011517	0.652385	16.03895	0.055696	0.832897
3	SMGR	2010	0.285118	0.235116	2.9179	16.47886	0.042623	0.492358
		2011	0.345294	0.201167	2.646515	16.6115	0.038659	0.592052
		2012	0.463215	0.185358	1.705896	16.79095	0.051827	0.631855
		2013	0.41226	0.173881	1.882372	17.01423	0.055204	0.612561
		2014	0.372452	0.162426	2.20898	17.11087	0.037273	0.589284
		2015	0.390379	0.118613	1.596969	17.10942	0.039842	0.659649
4	ARNA	2010	1.120818	0.091752	0.971598	13.6294	0.013163	0.65109
		2011	0.72093	0.115392	1.015894	13.73504	0.022198	0.679357
		2012	0.549847	0.169288	0.604116	13.92317	0.049579	0.638522
		2013	0.477241	0.20938	1.299329	14.1645	0.071573	0.621682
		2014	0.380326	0.207796	1.607543	14.2916	0.070349	0.584673
		2015	0.599122	0.04977	1.020687	14.07164	0.090042	0.618399
5	TOTO	2010	0.729975	0.178088	2.027858	13.93018	0.079845	0.33169
		2011	0.761338	0.163279	1.882691	14.10962	0.08135	0.355582
		2012	0.695305	0.154956	2.154356	14.27088	0.066024	0.302878
		2013	0.686069	0.135472	2.194985	14.35277	0.02519	0.320003
		2014	0.646606	0.144925	2.108495	14.53512	0.022792	0.398126
		2015	0.635582	0.116922	2.406744	14.6391	0.026726	0.358726
6	BTON	2010	0.227204	0.093438	3.597305	11.75915	0.148612	0.07891
		2011	0.28864	0.16093	3.137564	11.94241	0.113536	0.082963
		2012	0.282049	0.170654	3.295909	11.95122	0.112759	0.101447
		2013	0.268836	0.146949	3.630823	11.63998	0.036586	0.08456
		2014	0.18765	0.043811	5.055318	11.47219	0.069143	0.081753
		2015	0.228108	0.034535	4.357628	11.12255	0.087127	0.071867
7	LION	2010	0.169165	0.127117	8.721322	12.24449	0.027365	0.059918
		2011	0.211067	0.14361	7.102789	12.50029	0.025347	0.050714

		2012	0.16585	0.196943	9.344671	12.71866	0.034364	0.070183
		2013	0.199103	0.129894	6.72882	12.71792	0.03119	0.121229
		2014	0.351647	0.081656	3.694669	12.84165	0.047974	0.169314
		2015	0.406176	0.07198	3.802302	12.87198	0.060546	0.176677
8	LMSH	2010	0.671476	0.094003	2.444496	11.98923	0.042913	0.29798
9	PICO	2010	2.25028	0.02115	1.026561	13.28162	0.013598	0.364673
		2011	1.989878	0.021933	1.162496	13.33946	0.003578	0.329959
		2012	1.986324	0.018731	1.241422	13.2934	0.003596	0.286682
		2013	1.889762	0.024846	1.313494	13.43637	0.003548	0.2607
		2014	1.711481	0.025779	1.658506	13.45071	0.00324	0.222078
		2015	1.45168	0.02472	1.587871	13.45785	0.003277	0.218448
10	BUDI	2010	1.528265	0.023444	1.029338	14.56899	0.0347	0.567999
		2011	1.618007	0.027847	1.250391	14.73339	0.034846	0.569895
		2012	1.692399	0.002211	1.131628	14.6464	0.040759	0.55279
		2014	1.711972	0.011506	1.04593	14.64153	0.014918	0.597882
		2015	1.954942	0.006452	1.000842	14.68211	0.014236	0.524297
11	EKAD	2010	0.744175	0.201653	1.762587	12.44618	0.046653	0.330327
		2011	0.609207	0.116788	1.903629	12.70217	0.050157	0.313277
		2012	0.426695	0.132161	2.410926	12.86109	0.050184	0.311658
		2013	0.445479	0.34437	2.328717	12.94484	0.133598	0.912168
		2014	0.505675	0.099079	2.329598	13.17415	0.13306	0.256099
		2015	0.334736	0.120711	3.568799	13.18353	0.132544	0.247878
12	SRSN	2010	0.594746	0.027005	2.423875	12.74511	0.038896	0.253203
		2011	0.431898	0.066415	3.174826	12.86709	0.036	0.23711
		2012	0.493696	0.042168	2.752078	12.85878	0.027901	0.200122
		2014	0.409052	0.031199	2.870994	13.0665	0.088894	0.000263
		2015	0.688053	0.027009	2.167071	13.1836	0.089428	0.218835
13	AKPI	2010	0.897527	0.051499	1.775377	13.91026	0.033401	0.549108
		2011	1.058663	0.032901	1.396734	14.22467	0.027938	0.477323
		2012	1.033561	0.018145	1.404432	14.22708	0.022317	0.471242
		2013	1.025157	0.016608	1.359136	14.32437	0.025796	0.477822
		2014	1.149975	0.015577	1.13194	14.48097	0.016657	0.476296
		2015	1.603134	0.009588	1.030634	14.51735	0.01146	0.587015
14	TRST	2010	0.617759	0.06955	1.231739	14.37256	0.042951	0.611512
		2011	0.607672	0.069276	1.393783	14.52151	0.042744	0.592769
		2012	0.617252	0.028085	1.30332	14.48291	0.03672	0.578982
		2013	0.90733	0.010109	1.14294	14.5251	0.033102	0.61085
		2014	0.851432	0.009225	1.237775	14.73495	0.034518	0.60713
		2015	0.715634	0.00754	1.308475	14.71459	0.029494	0.625837
15	CPIN	2010	0.456717	0.34056	3.079185	16.52874	0.187135	0.296101
		2011	0.429558	0.267003	3.332321	16.70354	0.18092	0.361498

		2012	0.510265	0.217099	3.31275	16.87473	0.143175	0.371944
		2013	0.579977	0.160836	3.792315	17.06056	0.0885	0.406403
		2014	0.906414	0.083722	2.240683	17.18797	0.124331	0.434192
		2015	0.965136	0.07424	2.106176	17.22029	0.10676	0.450618
16	JPFA	2010	1.136604	0.154771	2.6295	16.45141	0.07072	0.318659
		2011	1.183794	0.078652	1.591069	16.5649	0.070405	0.354879
		2012	1.30122	0.098032	1.824546	16.69654	0.062991	0.370824
		2013	1.844034	0.042945	2.064559	16.87947	0.064216	0.353417
		2014	1.973621	0.024465	1.771465	17.0125	0.066203	0.404416
		2015	1.808565	0.030565	1.794274	17.0353	0.040026	0.396806
17	ASII	2010	1.09852	0.152893	1.284003	18.68298	0.058008	0.196186
		2011	1.024328	0.139056	1.363999	18.90658	0.03467	0.187623
		2012	1.029461	0.124768	1.399073	19.05223	0.037585	0.188321
		2013	1.015237	0.104195	1.241963	19.08275	0.023576	0.17693
		2014	0.961612	0.093738	1.322593	19.1223	0.028595	0.174767
		2015	0.939692	0.063614	1.379305	19.03151	0.03415	0.169911
18	AUTO	2010	0.384038	0.219596	1.726651	15.64891	0.054277	0.176344
		2011	0.474568	0.158761	1.354834	15.81207	0.039805	0.222255
		2012	0.619231	0.127895	1.164936	15.92905	0.047492	0.234662
		2013	0.320013	0.083852	1.889864	16.18594	0.057104	0.252262
		2014	0.418719	0.066505	1.331865	16.32148	0.068305	0.229886
		2015	0.413636	0.022505	1.322916	16.27713	0.057943	0.244591
19	BRAM	2010	0.309693	0.092715	4.011025	14.40627	0.040095	0.40752
		2011	0.381447	0.033118	2.788813	14.45748	0.029205	0.429289
		2012	0.355553	0.098056	2.127575	14.33662	0.017456	0.567803
		2013	0.467681	0.023187	1.571353	14.71407	0.034083	0.034888
		2014	0.725703	0.051529	1.415624	14.76453	0.034071	0.592272
		2015	0.595302	0.043085	1.806469	14.92957	0.0269	0.59987
20	INDS	2010	2.390955	0.090983	1.285827	13.84227	0.056737	0.240039
		2011	0.802636	0.105654	2.404038	14.02657	0.050553	0.299133
		2012	0.464736	0.080532	2.333918	14.20552	0.036439	0.454173
		2013	0.253101	0.067201	3.855908	14.34758	0.023177	0.483326
		2014	0.248506	0.055925	2.912226	14.43983	0.029853	0.546433
		2015	0.330837	0.000757	2.231266	14.32203	0.051782	0.566725
21	NIPS	2010	1.278551	0.037508	1.017116	12.90145	0.016613	0.460738
		2011	1.69093	0.039918	1.08355	13.26944	0.016815	0.392737
		2012	1.445776	0.041004	1.103391	13.46271	0.017743	0.406888
		2013	2.383859	0.042424	1.051103	13.72237	0.014718	0.321461
		2014	1.095618	0.041542	1.293854	13.83125	0.001835	0.372994
		2015	1.5414	0.019817	1.047323	13.8033	0.013024	0.383212
22	SMSM	2011	1.049159	0.124153	2.402825	14.26134	0.026199	0.369599

		2012	0.756862	0.186332	1.94424	14.5874	0.020778	0.339205
		2013	0.689615	0.198826	2.097616	14.67966	0.033121	0.289321
		2014	0.525409	0.240922	2.112016	14.78358	0.046409	0.281753
		2015	0.541476	0.207786	2.393789	14.84617	0.032826	0.322027
23	BATA	2013	0.715207	0.06519	1.692634	13.71288	0.03442	0.308695
		2014	0.805784	0.091343	1.552256	13.8242	0.034019	0.316465
		2015	0.453357	0.162864	2.470991	13.84395	0.037129	0.295182
24	JECC	2015	2.693927	0.001815	1.050051	14.32434	0.026167	0.291645
25	KBLI	2010	1.040884	0.050479	2.715262	14.02097	0.036629	0.407501
		2011	0.505047	0.058833	2.187525	14.42633	0.013071	0.358112
		2012	0.37444	0.107758	3.070765	14.6367	0.033152	0.336185
		2013	0.507949	0.054995	2.55016	14.76033	0.033664	0.294141
		2014	0.42157	0.052402	3.326353	14.68432	0.033009	0.307742
		2015	0.510471	0.074347	2.847607	14.7946	0.0308	0.355787
26	SCCO	2010	1.721562	0.052491	1.264651	14.60324	0.037191	0.162739
		2011	1.803298	0.07545	1.290955	15.02856	0.034049	0.139534
		2012	1.273425	0.114157	1.462059	15.08045	0.05538	0.151189
		2013	1.490114	0.059569	1.394167	15.13754	0.047678	0.144375
		2014	1.033426	0.083103	1.566265	15.12473	0.030795	0.17838
		2015	0.922415	0.089739	1.685817	15.07768	0.025392	0.179336
27	AISA	2010	2.339298	0.041336	1.285004	13.46627	0.054086	0.320113
		2011	0.958902	0.041765	1.893521	14.37673	0.044287	0.260052
		2012	0.901975	0.065587	1.269469	14.82625	0.044608	0.318991
		2013	1.130381	0.069058	1.750259	15.21589	0.022673	0.287513
		2014	1.051822	0.051295	2.663272	15.45256	0.018485	0.242231
		2015	1.284142	0.041248	1.622871	15.60908	0.016938	0.252777
28	CEKA	2010	1.754532	0.03476	1.672348	13.48451	0.029171	0.23186
		2011	1.032694	0.116967	1.686893	14.02914	0.047231	0.246422
		2012	1.217709	0.056772	1.02712	13.93198	0.044314	0.197371
		2013	1.024754	0.060833	1.632193	14.74447	0.04297	0.2015
		2014	1.38889	0.031929	1.465631	15.12435	0.045855	0.172534
		2015	1.321989	0.07171	1.534677	15.06419	0.041508	0.148741
29	DLTA	2010	0.199466	0.206138	6.330794	13.21369	0.073411	0.1608
		2011	0.205516	0.217929	6.009061	13.2429	0.075155	0.141001
		2012	0.245891	0.286353	5.264618	14.35773	0.079936	0.127627
		2013	0.281547	0.311978	4.705367	13.67287	0.076409	0.107352
		2014	0.297557	0.290412	4.473226	13.68683	0.062231	0.114518
		2015	0.222099	0.184957	6.423682	13.45813	0.07268	0.101427
30	INDF	2010	1.335928	0.084965	2.03649	17.46366	0.042701	0.248269
		2011	0.695209	0.093633	1.909528	17.62953	0.038792	0.241127
		2012	0.737538	0.080565	3.723846	17.72872	0.03022	0.220493

		2013	1.03509	0.043751	2.296225	17.87132	0.023591	0.249336
		2014	1.08446	0.059884	1.751178	17.96804	0.026583	0.263928
		2015	1.129595	0.040395	1.002947	17.97536	0.028705	0.273409
31	MLBI	2010	1.412743	0.389638	0.944963	14.39782	0.152705	0.465119
		2011	1.302257	0.41561	0.99419	14.43541	0.144638	0.448228
		2012	2.49261	0.393564	0.580499	14.26466	0.08866	0.566671
		2014	3.028644	0.356282	0.513906	14.91028	0.164131	0.589545
		2015	1.74091	0.236527	0.584216	14.8074	0.205677	0.602647
32	MYOR	2010	1.18467	0.114108	2.580762	15.79294	0.030492	0.338599
		2011	1.721957	0.073309	2.218722	16.06193	0.029655	0.308857
		2012	1.706295	0.089663	2.761124	16.1679	0.029326	0.344225
		2013	1.465201	0.109005	2.443362	16.3019	0.025242	0.32074
		2014	1.509687	0.039823	2.089937	16.46657	0.039167	0.34836
		2015	1.183618	0.110223	2.365337	16.5114	0.037949	0.332433
33	SKLT	2010	0.685263	0.024246	1.875387	12.65761	0.018767	0.48653
		2011	0.136201	0.027899	1.69742	12.74966	0.018579	0.46832
		2012	0.928801	0.031884	1.414771	12.90352	0.012656	0.40733
		2013	1.16247	0.037882	1.233836	13.2482	0.013005	0.41734
		2014	1.161957	0.049705	1.183801	13.43193	0.015665	0.407784
		2015	1.480259	0.053212	1.192455	13.52128	0.015263	0.393934
34	STTP	2010	0.451612	0.065659	1.709235	13.54451	0.027079	0.491435
		2011	0.907433	0.04565	1.034775	13.84282	0.027956	0.620276
		2012	1.156045	0.059708	0.997451	14.06529	0.029233	0.521124
		2013	1.11785	0.077845	1.142365	14.34315	0.012395	0.515215
		2014	1.079521	0.072618	1.484189	14.59045	0.015665	0.507187
		2015	0.902806	0.096743	1.57887	14.74936	0.022122	0.524204
35	ULTJ	2010	0.543527	0.053385	2.000683	14.447	0.079177	0.469418
		2011	0.650239	0.046496	1.520884	14.55858	0.071856	0.490889
		2012	0.44394	0.145998	2.018186	14.84864	0.07092	0.404624
		2013	0.395244	0.115637	2.470063	15.05685	0.056059	0.343565
		2014	0.28784	0.097138	3.344628	15.18078	0.045675	0.343915
		2015	0.265411	0.147769	3.745477	15.29574	0.050981	0.327885
36	GGRM	2010	0.444465	0.137103	2.700834	17.44496	0.049389	0.240931
		2011	0.592148	0.126842	2.244794	17.55042	0.040151	0.20952
		2012	0.560166	0.098019	2.170217	17.70792	0.028183	0.250289
		2013	0.725924	0.086348	1.722079	17.83076	0.02921	0.291291
		2014	0.752117	0.09267	1.620165	17.99275	0.029249	0.325886
		2015	0.670847	0.101611	1.770359	18.06921	0.020157	0.316611
37	HMSP	2010	1.009321	0.313676	1.612501	17.58555	0.0387	0.199138
		2011	0.899308	0.416511	1.74931	17.7831	0.088058	0.199209
		2012	0.97225	0.378904	1.77579	18.01461	0.082544	0.15678

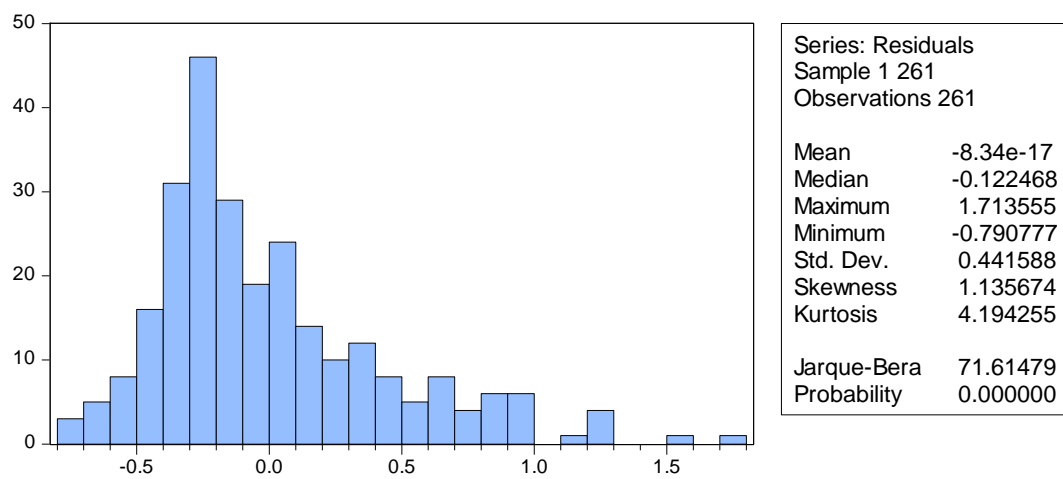
		2013	0.936032	0.394769	1.752573	18.13333	0.067816	0.17182
		2014	1.102563	0.358734	1.527733	18.20613	0.051977	0.208579
		2015	0.187239	0.272642	6.567409	18.30493	0.075467	0.165247
38	DVLA	2010	0.324156	0.130716	3.75652	13.74208	0.025986	0.202358
		2011	0.27527	0.130255	4.830365	13.78742	0.025666	0.215318
		2012	0.277044	0.13856	4.3102	13.89928	0.020134	0.203124
		2013	0.301028	0.105706	4.241757	13.91235	0.020682	0.204239
		2014	0.284505	0.065463	5.181311	13.91429	0.042933	0.216008
		2015	0.413717	0.078395	3.522906	14.08255	0.045532	0.187655
39	KAEF	2010	0.487651	0.0837	2.425486	14.9736	0.021966	0.249321
		2011	0.432522	0.09573	2.747545	15.06288	0.029763	0.237827
		2012	0.447782	0.096751	2.825046	15.13335	0.029442	0.215316
		2013	0.521798	0.087236	2.426698	15.28524	0.027183	0.201722
		2014	0.638845	0.079689	2.386994	15.32425	0.011577	0.187973
		2015	0.737946	0.078169	1.93023	15.39663	0.012355	0.21066
40	KLBF	2010	0.23458	0.191411	4.388655	16.14052	0.013542	0.228264
		2011	0.269895	0.186079	3.652743	16.20536	0.013432	0.22482
		2012	0.277593	0.18848	3.405397	16.42825	0.010857	0.239411
		2013	0.33119	0.174144	2.839259	16.58823	0.010946	0.258553
		2014	0.265604	0.170711	3.403637	16.67017	0.01222	0.274
		2015	0.252154	0.150236	3.697775	16.69961	0.018191	0.287557
41	MERK	2010	0.197655	0.273235	6.227505	13.54066	0.047897	0.154227
		2011	0.182538	0.395557	7.515184	13.73053	0.058324	0.1053
		2012	0.164203	0.189326	3.87124	13.74281	0.094375	0.111195
		2013	0.15472	0.251734	3.979475	13.99278	0.097752	0.088424
		2014	0.188725	0.25324	4.58588	13.66841	0.08831	0.113571
		2015	0.170934	0.222155	3.652179	13.79882	0.089504	0.172656
42	PYFA	2010	0.302519	0.041745	3.008885	11.85551	0.012723	0.525187
		2011	0.432491	0.043818	2.539869	11.92566	0.013996	0.466933
		2012	0.548931	0.039073	2.413371	12.08238	0.009353	0.486964
		2013	0.864932	0.035382	1.536793	12.16814	0.004492	0.557073
		2014	0.788927	0.015388	1.626794	12.31179	0.014758	0.530957
		2015	0.5802	0.0193	1.991186	12.29153	0.016732	0.526108
43	SQBI	2010	0.189451	0.289489	5.688595	12.62889	0.106019	0.234002
		2011	0.195888	0.331878	5.800509	12.74202	0.087122	0.216605
		2012	0.210611	0.411555	5.452657	12.94728	0.079841	0.202449
		2013	0.189451	0.289489	5.688595	12.62889	0.091905	0.234002
		2014	0.195888	0.331878	5.800509	12.74202	0.073999	0.216605
		2015	0.220633	0.340554	4.854663	12.86756	0.066448	0.213759
44	TSPC	2010	0.362836	0.136196	3.28981	15.45144	0.020094	0.211943
		2011	0.395425	0.137708	3.082971	15.57003	0.01938	0.208484

		2013	0.399955	0.118073	2.961942	15.74047	0.013646	0.222607
		2014	0.353405	0.104474	3.002186	15.83203	0.0189	0.27793
		2015	0.449049	0.084207	2.537551	15.91738	0.027097	0.257221
45	TCID	2012	0.150208	0.119196	7.72656	14.43132	0.063237	0.348876
		2013	0.239192	0.109245	3.573192	14.52251	0.010338	0.466905
		2014	0.443887	0.094059	1.798189	14.65198	0.016021	0.498562
		2015	0.214141	0.261503	4.991109	14.65487	0.059216	0.433551
46	UNVR	2010	1.150044	0.388984	0.851279	16.79563	0.161838	0.476802
		2011	1.847729	0.39727	0.686718	16.9712	0.161956	0.506979
		2012	2.02013	0.403767	0.668263	17.12252	0.160708	0.52428
		2014	2.105316	0.401838	0.714866	17.3568	0.189633	0.514543
		2015	2.258498	0.372017	0.653971	17.41239	0.192919	0.528986
47	KDSI	2010	1.182531	0.030287	1.266374	13.93156	0.005534	0.318175
		2011	1.1047	0.040215	1.35816	13.98145	0.01023	0.306644
		2012	0.805548	0.064562	1.591054	14.0789	0.023491	0.301174
		2013	1.415376	0.042345	1.44455	14.14216	0.021096	0.403281
		2014	1.401467	0.046723	1.367937	14.30178	0.017527	0.396717
		2015	2.106434	0.009745	1.156607	14.35431	0.025623	0.342373

Lampiran 5 : Statistik Deskriptif Variabel Penelitian

Tabel 4.2
Statistik Deskriptif Variabel Penelitian

	DER	ROA	CR	SIZE	BRISK	STA
Mean	0.809144	0.122488	2.471339	14.85926	0.047829	0.346558
Median	0.646606	0.093438	1.930230	14.55858	0.036439	0.318991
Maximum	3.028644	0.416511	9.344671	19.12230	0.205677	0.912168
Minimum	0.136201	0.000757	0.513906	11.12255	0.001835	0.000263
Std. Dev.	0.575003	0.100897	1.593676	1.694116	0.038236	0.171338
Skewness	1.132292	1.290045	1.597643	0.416308	1.831945	0.613377
Kurtosis	3.904490	4.015085	5.554050	2.612988	6.591019	3.014910
Jarque-Bera	64.66753	83.59892	181.9717	9.167930	286.2246	16.36848
Probability	0.000000	0.000000	0.000000	0.010214	0.000000	0.000279
Sum	211.1865	31.96950	645.0195	3878.267	12.48343	90.45171
Sum Sq. Dev.	85.96336	2.646835	660.3487	746.2078	0.380125	7.632733
Observations	261	261	261	261	261	261

Lampiran 6 : Hasil Data Uji Asumsi Klasik Sebelum di Transform**Hasil Uji Normalitas**

Lampiran 6 (Lanjutan)

Tabel 4.4
Hasil Uji Autokorelasi

Date: 06/03/17 Time: 16:58

Sample: 1 261

Included observations: 261

Autocorrelation	Partial Correlation	AC	PAC	Q-Stat	Prob	
. **	.**	1	0.253	0.253	16.865	0.000
.	.	2	0.053	-0.012	17.596	0.000
.	.	3	0.025	0.015	17.759	0.000
.	.	4	0.045	0.038	18.288	0.001
.	.	5	0.064	0.046	19.383	0.002
.	.	6	0.044	0.017	19.912	0.003
.	.	7	0.060	0.045	20.878	0.004
.	.	8	0.045	0.017	21.421	0.006
.*	.*	9	0.117	0.103	25.127	0.003
.	.*	10	-0.018	-0.083	25.211	0.005
.	.	11	0.037	0.059	25.597	0.007
.	.*	12	-0.031	-0.066	25.856	0.011
.	.*	13	0.060	0.081	26.843	0.013
.	.*	14	-0.056	-0.115	27.728	0.015
.	.	15	-0.058	-0.017	28.662	0.018
.	.	16	-0.065	-0.065	29.842	0.019
.	.	17	-0.065	-0.030	31.019	0.020
.*	.*	18	-0.070	-0.073	32.415	0.020
.	.	19	-0.043	0.021	32.933	0.024
.	.	20	0.067	0.069	34.205	0.025
.	.	21	-0.009	-0.011	34.230	0.034
.*	.*	22	-0.089	-0.106	36.520	0.027
.	.	23	-0.051	0.052	37.281	0.030
.	.	24	-0.006	-0.009	37.292	0.041
.*	.*	25	-0.096	-0.074	39.978	0.029
.	.	26	-0.019	0.024	40.083	0.038
.*	.*	27	0.075	0.120	41.713	0.035
.	.*	28	-0.008	-0.068	41.731	0.046
.	.	29	-0.035	-0.028	42.084	0.055
.	.	30	0.017	0.055	42.169	0.069
.	.	31	-0.026	-0.031	42.373	0.084
.	.	32	-0.033	-0.048	42.706	0.098
.	.	33	-0.022	-0.020	42.849	0.117
.*	.*	34	-0.095	-0.081	45.601	0.088
.*	.	35	-0.084	-0.048	47.760	0.074
.	.	36	-0.043	-0.037	48.335	0.082

Lampiran 6 (Lanjutan ...)

Hasil Uji Heteosekdastisitas

Heteroskedasticity Test: Harvey

F-statistic	1.464664	Prob. F(5,255)	0.2018
Obs*R-squared	7.286377	Prob. Chi-Square(5)	0.2002
Scaled explained SS	5.575666	Prob. Chi-Square(5)	0.3497

Test Equation:

Dependent Variable: LRESID2

Method: Least Squares

Date: 06/03/17 Time: 16:59

Sample: 1 261

Included observations: 261

Variable	Coefficient	Std. Error	t-Statistic	Prob.
C	-1.947466	1.249188	-1.558986	0.1202
ROA	-2.940939	1.696906	-1.733118	0.0843
CR	-0.067507	0.093336	-0.723263	0.4702
SIZE	-0.048229	0.075868	-0.635698	0.5255
BRISK	8.815962	4.104942	2.147646	0.0327
STA	-0.322507	0.786893	-0.409848	0.6823
R-squared	0.027917	Mean dependent var		-2.881287
Adjusted R-squared	0.008857	S.D. dependent var		1.946978
S.E. of regression	1.938337	Akaike info criterion		4.184258
Sum squared resid	958.0732	Schwarz criterion		4.266201
Log likelihood	-540.0456	Hannan-Quinn criter.		4.217196
F-statistic	1.464664	Durbin-Watson stat		1.229621
Prob(F-statistic)	0.201845			

Lampiran 6 (Lanjutan ...)

Hasil Uji Multikolinieritas

Variance Inflation Factors
 Date: 06/03/17 Time: 17:00
 Sample: 1 261
 Included observations: 261

Variable	Coefficient Variance	Uncentered VIF	Centered VIF
C	0.082578	108.4020	NA
ROA	0.152379	5.029697	2.028542
CR	0.000461	5.227262	1.531139
SIZE	0.000305	89.43017	1.143198
BRISK	0.891709	4.382662	1.704835
STA	0.032767	6.424061	1.257920

Lampiran 6 (Lanjutan ...)

Hasil Uji F

Dependent Variable: DER
 Method: Least Squares
 Date: 06/03/17 Time: 16:59
 Sample: 1 261
 Included observations: 261

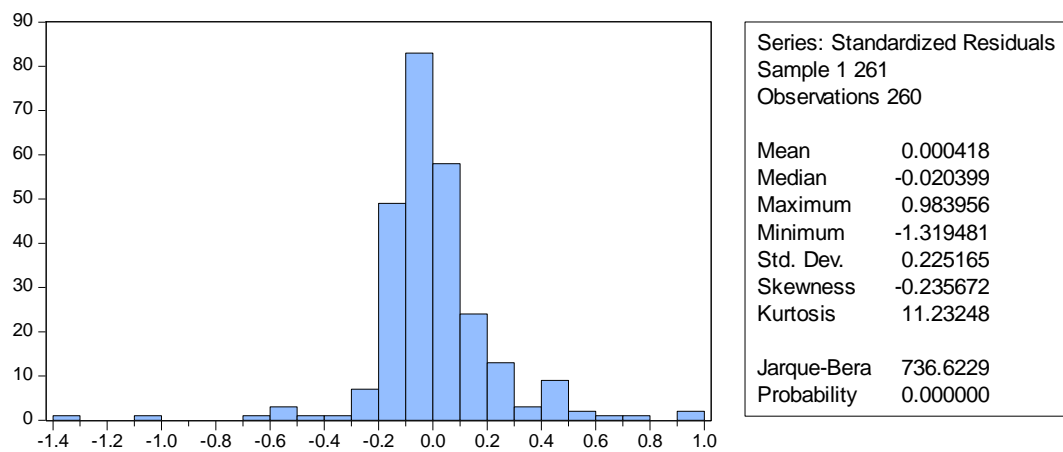
Variable	Coefficient	Std. Error	t-Statistic	Prob.
C	1.563271	0.287364	5.440040	0.0000
ROA	-0.061231	0.390357	-0.156859	0.8755
CR	-0.247948	0.021471	-11.54798	0.0000
SIZE	-0.002965	0.017453	-0.169893	0.8652
BRISK	1.184496	0.944303	1.254360	0.2109
STA	-0.422609	0.181017	-2.334633	0.0203
R-squared	0.410214	Mean dependent var		0.809144
Adjusted R-squared	0.398649	S.D. dependent var		0.575003
S.E. of regression	0.445896	Akaike info criterion		1.245259
Sum squared resid	50.69999	Schwarz criterion		1.327202
Log likelihood	-156.5064	Hannan-Quinn criter.		1.278198
F-statistic	35.47203	Durbin-Watson stat		0.841575
Prob(F-statistic)	0.000000			

Lampiran 6 (Lanjutan ...)

Hasil Uji R²

Dependent Variable: DER
 Method: Least Squares
 Date: 06/03/17 Time: 16:59
 Sample: 1 261
 Included observations: 261

Variable	Coefficient	Std. Error	t-Statistic	Prob.
C	1.563271	0.287364	5.440040	0.0000
ROA	-0.061231	0.390357	-0.156859	0.8755
CR	-0.247948	0.021471	-11.54798	0.0000
SIZE	-0.002965	0.017453	-0.169893	0.8652
BRISK	1.184496	0.944303	1.254360	0.2109
STA	-0.422609	0.181017	-2.334633	0.0203
R-squared	0.410214	Mean dependent var		0.809144
Adjusted R-squared	0.398649	S.D. dependent var		0.575003
S.E. of regression	0.445896	Akaike info criterion		1.245259
Sum squared resid	50.69999	Schwarz criterion		1.327202
Log likelihood	-156.5064	Hannan-Quinn criter.		1.278198
F-statistic	35.47203	Durbin-Watson stat		0.841575
Prob(F-statistic)	0.000000			

Lampiran 7 : Hasil Data Uji Asumsi Klasik Setelah di Transform**Tabel 4.3****Hasil Uji Normalitas**

Lampiran 7 (Lanjutan ...)

Tabel 4.5
Hasil Uji Autokorelasi

Date: 06/03/17 Time: 16:54

Sample: 1 261

Included observations: 261

Autocorrelation	Partial Correlation	AC	PAC	Q-Stat	Prob	
. .	. .	1	0.025	0.025	0.1674	0.682
. .	. .	2	0.043	0.042	0.6444	0.725
. .	. .	3	-0.041	-0.043	1.0811	0.782
. .	. .	4	0.010	0.011	1.1097	0.893
. .	. .	5	-0.031	-0.028	1.3637	0.928
. .	. .	6	0.070	0.070	2.6938	0.846
. .	. .	7	-0.002	-0.002	2.6948	0.912
. *	. *	8	0.197	0.191	13.207	0.105
. .	. .	9	0.019	0.015	13.305	0.149
. .	. .	10	0.032	0.016	13.586	0.193
. .	. .	11	-0.001	0.015	13.587	0.257
. .	. .	12	0.030	0.023	13.839	0.311
. .	. .	13	0.005	0.016	13.845	0.385
. .	. .	14	-0.015	-0.043	13.905	0.457
. .	. .	15	-0.052	-0.051	14.663	0.476
. .	* .	16	-0.045	-0.085	15.226	0.508
. .	. .	17	-0.035	-0.040	15.561	0.555
. .	. .	18	0.011	-0.000	15.598	0.621
. .	. .	19	0.017	0.009	15.679	0.679
. .	. .	20	-0.034	-0.050	16.013	0.716
. .	. .	21	0.052	0.055	16.790	0.724
. .	. .	22	0.011	0.030	16.823	0.773
. .	. .	23	-0.017	0.004	16.906	0.814
. .	. .	24	-0.013	0.021	16.955	0.851
. *	. *	25	0.114	0.141	20.742	0.707
. .	. .	26	-0.018	-0.011	20.840	0.750
. .	. .	27	0.027	0.018	21.048	0.784
. .	. .	28	-0.049	-0.025	21.757	0.792
. .	. .	29	0.008	-0.014	21.775	0.829
. .	. .	30	0.017	0.010	21.857	0.859
. .	. .	31	-0.000	-0.036	21.857	0.887
. .	. .	32	0.008	0.000	21.875	0.911
. **	. *	33	0.223	0.176	36.827	0.296
. .	. .	34	-0.020	-0.031	36.944	0.334
. .	. .	35	0.023	0.004	37.104	0.372
. .	. .	36	-0.047	-0.019	37.780	0.388

Lampiran 7 (Lanjutan ...)

Tabel 4.6

Hasil Uji Heteroskedastisitas

Heteroskedasticity Test: Harvey

F-statistic	0.731035	Prob. F(5,254)	0.6007
Obs*R-squared	3.688439	Prob. Chi-Square(5)	0.5951
Scaled explained SS	4.489470	Prob. Chi-Square(5)	0.4813

Test Equation:

Dependent Variable: LWRESID2

Method: Least Squares

Date: 06/03/17 Time: 16:54

Sample: 1 261

Included observations: 260

Variable	Coefficient	Std. Error	t-Statistic	Prob.
C	-4.795706	0.330101	-14.52800	0.0000
AROA*WGT	3.008291	1.929873	1.558802	0.1203
ACR*WGT	-0.184617	0.242092	-0.762593	0.4464
ASIZE*WGT	-0.133415	0.127619	-1.045412	0.2968
ABRISK*WGT	2.844043	9.528345	0.298482	0.7656
ASTA*WGT	1.053898	2.263877	0.465528	0.6420
R-squared	0.014186	Mean dependent var		-5.108522
Adjusted R-squared	-0.005219	S.D. dependent var		2.455545
S.E. of regression	2.461945	Akaike info criterion		4.662587
Sum squared resid	1539.538	Schwarz criterion		4.744757
Log likelihood	-600.1363	Hannan-Quinn criter.		4.695620
F-statistic	0.731035	Durbin-Watson stat		1.849145
Prob(F-statistic)	0.600750			

Lampiran 7 (Lanjutan ...)

Tabel 4.7
Hasil Uji Multikolinieritas

Variance Inflation Factors
 Date: 06/03/17 Time: 16:54
 Sample: 1 261
 Included observations: 261

Variable	Coefficient Variance	Uncentered VIF	Centered VIF
C	0.000457	2.300314	NA
AROA	0.051005	2.291015	1.755242
ACR	0.000501	2.025661	2.024054
ASIZE	7.60E-05	3.906032	3.224085
ABRISK	0.779517	1.456148	1.333815
ASTA	0.043834	2.314370	2.021446

Lampiran 7 (Lanjutan ...)

Tabel 4.8

Hasil Uji t

Dependent Variable: ADER
 Method: Least Squares
 Date: 06/03/17 Time: 16:51
 Sample: 1 261
 Included observations: 261
 Weighting series: ASIZE
 Weight type: Variance (average scaling)

Variable	Coefficient	Std. Error	t-Statistic	Prob.
C	-0.015307	0.021387	-0.715730	0.4748
AROA	-1.090884	0.225842	-4.830288	0.0000
ACR	-0.167618	0.022377	-7.490675	0.0000
ASIZE	0.087455	0.008717	10.03293	0.0000
ABRISK	1.071680	0.882902	1.213814	0.2259
ASTA	0.118570	0.209365	0.566333	0.5717

Weighted Statistics			
R-squared	0.436069	Mean dependent var	0.167204
Adjusted R-squared	0.424968	S.D. dependent var	0.299122
S.E. of regression	0.227371	Akaike info criterion	-0.101663
Sum squared resid	13.13116	Schwarz criterion	-0.019493
Log likelihood	19.21619	Hannan-Quinn criter.	-0.068630
F-statistic	39.28194	Durbin-Watson stat	1.846899
Prob(F-statistic)	0.000000	Weighted mean dep.	0.165919

Unweighted Statistics			
R-squared	0.558072	Mean dependent var	0.428017
Adjusted R-squared	0.549373	S.D. dependent var	0.565670
S.E. of regression	0.379727	Sum squared resid	36.62495
Durbin-Watson stat	1.790811		

Lampiran 7 (Lanjutan ...)

Tabel 4.9
Hasil Uji F

Dependent Variable: ADER
Method: Least Squares
Date: 06/03/17 Time: 16:51
Sample: 1 261
Included observations: 261
Weighting series: ASIZE
Weight type: Variance (average scaling)

Variable	Coefficient	Std. Error	t-Statistic	Prob.
C	-0.015307	0.021387	-0.715730	0.4748
AROA	-1.090884	0.225842	-4.830288	0.0000
ACR	-0.167618	0.022377	-7.490675	0.0000
ASIZE	0.087455	0.008717	10.03293	0.0000
ABRISK	1.071680	0.882902	1.213814	0.2259
ASTA	0.118570	0.209365	0.566333	0.5717

Weighted Statistics			
R-squared	0.436069	Mean dependent var	0.167204
Adjusted R-squared	0.424968	S.D. dependent var	0.299122
S.E. of regression	0.227371	Akaike info criterion	-0.101663
Sum squared resid	13.13116	Schwarz criterion	-0.019493
Log likelihood	19.21619	Hannan-Quinn criter.	-0.068630
F-statistic	39.28194	Durbin-Watson stat	1.846899
Prob(F-statistic)	0.000000	Weighted mean dep.	0.165919

Unweighted Statistics			
R-squared	0.558072	Mean dependent var	0.428017
Adjusted R-squared	0.549373	S.D. dependent var	0.565670
S.E. of regression	0.379727	Sum squared resid	36.62495
Durbin-Watson stat	1.790811		

Lampiran 7 (Lanjutan ...)

Tabel 4.10
Hasil Uji R²

Dependent Variable: ADER
Method: Least Squares
Date: 06/03/17 Time: 16:51
Sample: 1 261
Included observations: 261
Weighting series: ASIZE
Weight type: Variance (average scaling)

Variable	Coefficient	Std. Error	t-Statistic	Prob.
C	-0.015307	0.021387	-0.715730	0.4748
AROA	-1.090884	0.225842	-4.830288	0.0000
ACR	-0.167618	0.022377	-7.490675	0.0000
ASIZE	0.087455	0.008717	10.03293	0.0000
ABRISK	1.071680	0.882902	1.213814	0.2259
ASTA	0.118570	0.209365	0.566333	0.5717

Weighted Statistics			
R-squared	0.436069	Mean dependent var	0.167204
Adjusted R-squared	0.424968	S.D. dependent var	0.299122
S.E. of regression	0.227371	Akaike info criterion	-0.101663
Sum squared resid	13.13116	Schwarz criterion	-0.019493
Log likelihood	19.21619	Hannan-Quinn criter.	-0.068630
F-statistic	39.28194	Durbin-Watson stat	1.846899
Prob(F-statistic)	0.000000	Weighted mean dep.	0.165919

Unweighted Statistics			
R-squared	0.558072	Mean dependent var	0.428017
Adjusted R-squared	0.549373	S.D. dependent var	0.565670
S.E. of regression	0.379727	Sum squared resid	36.62495
Durbin-Watson stat	1.790811		

Lampiran 7 (Lanjutan...)

Tabel 4.11

Analisis Regresi Linier Berganda

Dependent Variable: ADER
 Method: Least Squares
 Date: 06/03/17 Time: 16:51
 Sample: 1 261
 Included observations: 261
 Weighting series: ASIZE
 Weight type: Variance (average scaling)

Variable	Coefficient	Std. Error	t-Statistic	Prob.
C	-0.015307	0.021387	-0.715730	0.4748
AROA	-1.090884	0.225842	-4.830288	0.0000
ACR	-0.167618	0.022377	-7.490675	0.0000
ASIZE	0.087455	0.008717	10.03293	0.0000
ABRISK	1.071680	0.882902	1.213814	0.2259
ASTA	0.118570	0.209365	0.566333	0.5717

Weighted Statistics			
R-squared	0.436069	Mean dependent var	0.167204
Adjusted R-squared	0.424968	S.D. dependent var	0.299122
S.E. of regression	0.227371	Akaike info criterion	-0.101663
Sum squared resid	13.13116	Schwarz criterion	-0.019493
Log likelihood	19.21619	Hannan-Quinn criter.	-0.068630
F-statistic	39.28194	Durbin-Watson stat	1.846899
Prob(F-statistic)	0.000000	Weighted mean dep.	0.165919

Unweighted Statistics			
R-squared	0.558072	Mean dependent var	0.428017
Adjusted R-squared	0.549373	S.D. dependent var	0.565670
S.E. of regression	0.379727	Sum squared resid	36.62495
Durbin-Watson stat	1.790811		