

LAMPIRAN

1. Data Statistik Perbankan Syariah BPRS tahun 2012-2016

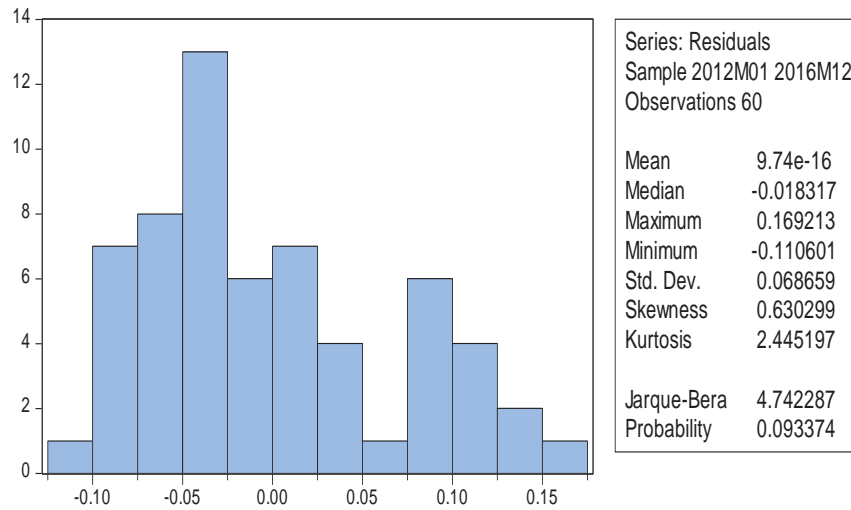
(dalam jutaan rupiah dan persen)

TAHUN	PJB	PBH	FDR	NPF	ROA
Jan-12	2229987	312352	124.41	6.68	2.65
Feb-12	2311535	315656	125.03	6.61	2.70
Mar-12	2386543	323195	125.53	6.42	2.73
Apr-12	2454147	333044	124.98	6.50	2.66
May-12	2533265	350009	126.04	6.47	2.59
Jun-12	2609553	374017	129.73	6.39	2.74
Jul-12	2688598	379237	129.76	6.68	2.67
Aug-12	2709545	391407	127.74	6.91	2.57
Sep-12	2765037	403285	126.71	6.87	2.58
Oct-12	2806450	415544	124.82	6.83	2.82
Nov-12	2847842	431202	124.21	6.80	2.76
Dec-12	2875594	420492	120.96	6.15	2.64
Jan-13	2895794	407940	119.48	6.91	3.07
Feb-13	2969459	419008	119.46	7.33	3.05
Mar-13	3035977	433891	119.67	7.21	3.06
Apr-13	3140253	463729	122.50	7.32	3.14
May-13	3240570	493940	125.40	7.69	3.10
Jun-13	3333860	509793	129.63	7.25	2.98
Jul-13	3407903	531232	131.51	7.35	2.87
Aug-13	3393663	525969	126.96	7.89	2.63
Sep-13	3442915	545964	126.52	7.58	2.85
Oct-13	3487314	536572	125.92	7.48	2.90
Nov-13	3533837	547326	124.76	7.34	2.89
Dec-13	3564001	533379	120.93	6.50	2.79
Jan-14	3586534	495461	120.52	7.77	2.78
Feb-14	3667744	517625	122.30	7.71	2.81
Mar-14	3734507	540702	123.10	7.74	2.71
Apr-14	3785256	581652	126.58	8.00	2.56
May-14	3826534	605993	130.09	8.23	2.47
Jun-14	3872626	622910	134.64	8.18	2.77
Jul-14	3879805	637321	135.04	8.62	2.45
Aug-14	3868852	651799	129.96	8.83	2.49
Sep-14	3913531	680168	131.70	8.68	2.26
Oct-14	3932070	686670	130.14	8.94	2.18

Nov-14	3953456	692786	129.27	8.81	2.21
Dec-14	3978440	690125	124.24	7.89	2.26
Jan-15	4003087	655562	123.50	8.97	2.31
Feb-15	4066510	670324	124.75	9.11	2.23
Mar-15	4144669	696581	125.60	10.36	2.07
Apr-15	4224222	716171	126.67	9.33	2.19
May-15	4293436	747037	129.63	9.38	2.17
Jun-15	4379515	772142	135.68	9.25	2.30
Jul-15	4367292	780640	132.47	9.80	2.28
Aug-15	4390537	806955	130.28	9.74	2.34
Sep-15	4414981	815552	129.01	9.87	2.22
Oct-15	4428248	824122	127.21	10.01	2.20
Nov-15	4455269	850123	125.64	9.69	2.15
Dec-15	4502847	820832	120.06	8.20	2.20
Jan-16	4519344	776093	118.56	9.08	2.32
Feb-16	4587164	792676	119.92	9.41	2.32
Mar-16	4637089	834568	121.55	9.44	2.25
Apr-16	4727913	882824	121.55	9.51	2.25
May-16	4844471	926416	125.03	9.60	2.16
Jun-16	4937305	947539	129.35	9.18	2.18
Jul-16	4890362	940690	121.32	9.97	2.21
Aug-16	4934251	954934	118.96	10.99	2.11
Sep-16	4896844	950606	118.63	10.47	2.45
Oct-16	4923252	953495	117.86	10.49	2.47
Nov-16	4991960	956650	116.26	10.13	2.34
Dec-16	5063201	931205	114.40	8.63	2.27

2. Hasil Uji Asumsi Klasik

a. Uji Normalitas



b. Uji Multikolonieritas

Variance Inflation Factors
Date: 09/06/17 Time: 16:44
Sample: 2012M01 2016M12
Included observations: 60

Variable	Coefficient Variance	Uncentered VIF	Centered VIF
C	22.40725	19497.15	NA
PJB	0.220363	44326.75	6.655653
PBH	0.070745	11087.31	6.345567
FDR	0.094700	1917.318	1.145352
NPF	0.012151	49.32624	1.153001

c. Uji Autokorelasi

Breusch-Godfrey Serial Correlation LM Test:

F-statistic	0.169018	Prob. F(2,49)	0.8450
Obs*R-squared	0.397383	Prob. Chi-Square(2)	0.8198

Test Equation:

Dependent Variable: RESID

Method: Least Squares

Date: 09/06/17 Time: 16:45

Sample: 2012M03 2016M12

Included observations: 60

Presample missing value lagged residuals set to zero.

Variable	Coefficient	Std. Error	t-Statistic	Prob.
C	0.529164	4.899420	0.108006	0.9144
PJB	-0.041678	0.482625	-0.086358	0.9315
PBH	0.018248	0.272383	0.066992	0.9469
FDR	-0.026953	0.316353	-0.085200	0.9324
NPF	-0.001899	0.112175	-0.016926	0.9866
RESID(-1)	0.892550	3.303819	0.270157	0.7882
RESID(-2)	-0.284967	0.717257	-0.397301	0.6929

R-squared	0.006851	Mean dependent var	-4.47E-15
Adjusted R-squared	-0.155295	S.D. dependent var	0.047309
S.E. of regression	0.050850	Akaike info criterion	-2.978143
Sum squared resid	0.126701	Schwarz criterion	-2.658419
Log likelihood	95.36614	Hannan-Quinn criter.	-2.853604
F-statistic	0.042255	Durbin-Watson stat	1.985223
Prob(F-statistic)	0.999963		

d. Uji Heteroskedastisitas

Heteroskedasticity Test: Breusch-Pagan-Godfrey

F-statistic	0.475331	Prob. F(4,55)	0.7536
Obs*R-squared	2.004866	Prob. Chi-Square(4)	0.7349
Scaled explained SS	1.217321	Prob. Chi-Square(4)	0.8752

Test Equation:

Dependent Variable: RESID^2

Method: Least Squares

Date: 09/06/17 Time: 16:43
 Sample: 2012M01 2016M12
 Included observations: 60

Variable	Coefficient	Std. Error	t-Statistic	Prob.
C	0.157726	0.206283	0.764606	0.4478
PJB	0.000339	0.024437	0.013892	0.9890
PBH	-0.003932	0.017889	-0.219821	0.8268
FDR	-0.023770	0.020391	-1.165711	0.2488
NPF	0.004225	0.012749	0.331362	0.7416
R-squared	0.033414	Mean dependent var		0.004635
Adjusted R-squared	-0.036883	S.D. dependent var		0.005620
S.E. of regression	0.005722	Akaike info criterion		-7.409249
Sum squared resid	0.001801	Schwarz criterion		-7.234721
Log likelihood	227.2775	Hannan-Quinn criter.		-7.340982
F-statistic	0.475331	Durbin-Watson stat		0.960066
Prob(F-statistic)	0.753633			

3. Hasil Regresi Berganda (Uji Hipotesis)

Dependent Variable: ROA
 Method: Least Squares
 Date: 09/06/17 Time: 16:42
 Sample: 2012M01 2016M12
 Included observations: 60

Variable	Coefficient	Std. Error	t-Statistic	Prob.
C	-1.052048	2.563514	-0.410393	0.6831
PJB	0.891419	0.303682	2.935364	0.0049
PBH	-0.724197	0.222315	-3.257530	0.0019
FDR	-0.250700	0.253404	-0.989328	0.3268
NPF	-0.315528	0.158439	-1.991483	0.0514
R-squared	0.660871	Mean dependent var		0.918566
Adjusted R-squared	0.636207	S.D. dependent var		0.117900
S.E. of regression	0.071111	Akaike info criterion		-2.369483
Sum squared resid	0.278126	Schwarz criterion		-2.194954
Log likelihood	76.08448	Hannan-Quinn criter.		-2.301215
F-statistic	26.79506	Durbin-Watson stat		0.648503
Prob(F-statistic)	0.000000			

Perpustakaan Universitas Muhammadiyah Yogyakarta menyatakan bahwa Skripsi atas:

Nama : Zaqki Najib Ahmad

Prodi : Ekonomi dan Perbankan Islam

NIM : 20130730212


Judul : Analisis Pengaruh Pembiayaan jual Beli, Pembiayaan Bagi hasil, Financing to Deposit Ratio (FDR) dan Non Performing Financing (NPF) Terhadap Profitabilitas BPRS di Indonesia

Promotor : Julia Noermawati, SE.,MSI

Telah dilakukan tes Turnitin filter 1%, dengan indeks similaritasnya sebagaimana terlampir.

Semoga surat keterangan ini dapat digunakan sebagaimana mestinya.

Yogyakarta, 6 Januari 2018
Pustakawan



Nita Siti Mudawamah, M.IP

ANALISIS PENGARUH PEMBIAYAAN JUAL BELI, PEMBIAYAAN BAGI HASIL, FINANCING TO DEPOSIT RATIO (FDR) DAN NON PERFORMING FINANCING (NPF) TERHADAP PROFITABILITAS BPRS DI INDONESIA

ORIGINALITY REPORT

8%

SIMILARITY INDEX

8%

INTERNET SOURCES

3%

PUBLICATIONS

%

STUDENT PAPERS

PRIMARY SOURCES

1

eprints.undip.ac.id

Internet Source

2%

2

repository.uinjkt.ac.id

Internet Source

1%

3

lib.unnes.ac.id

Internet Source

1%

4

digilib.uin-suka.ac.id

Internet Source

1%

5

www.dayahglobal.com

Internet Source

1%

6

direktori.umy.ac.id

Internet Source

1%

7

ecampus.iainbatusangkar.ac.id

Internet Source

1%

8

fai.umy.ac.id

Internet Source

1%

9

eprints.ums.ac.id

Internet Source

1%

10

media.neliti.com

Internet Source

1%

Exclude quotes On

Exclude matches < 1%

Exclude bibliography Off