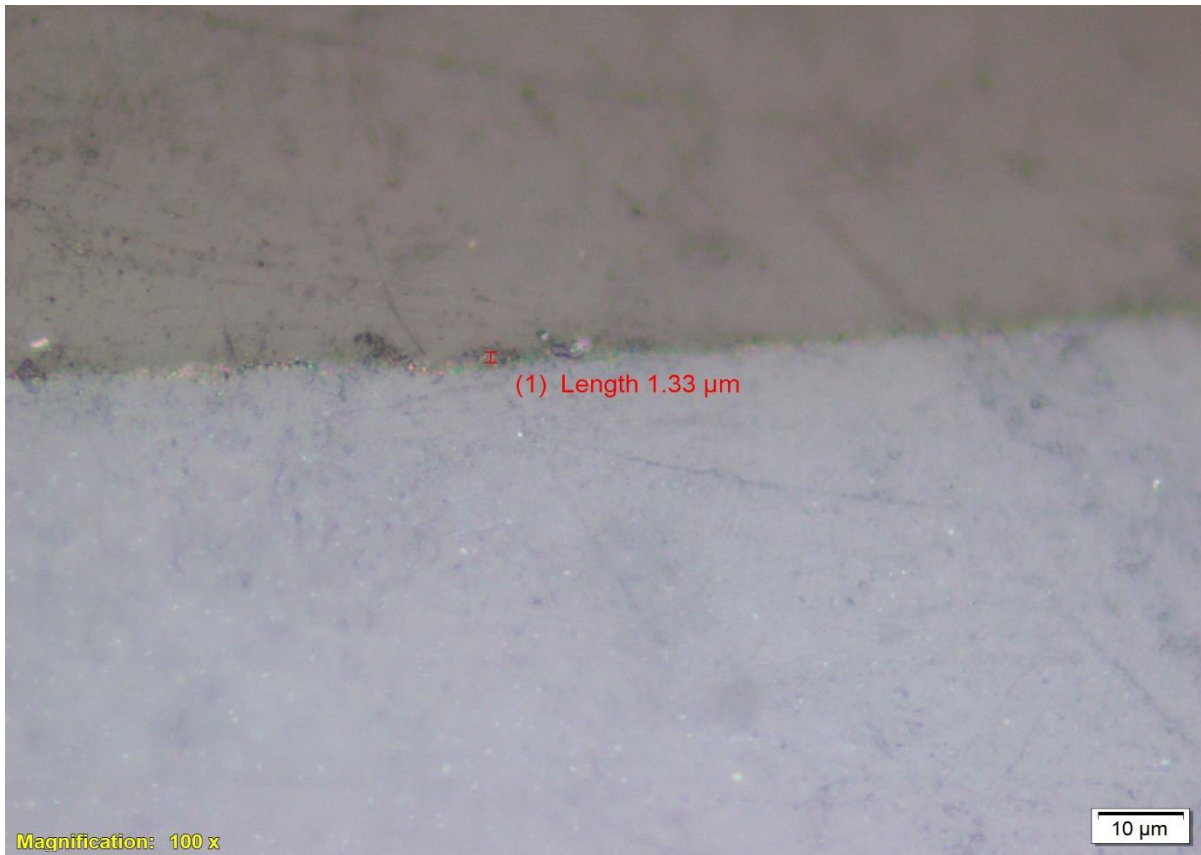


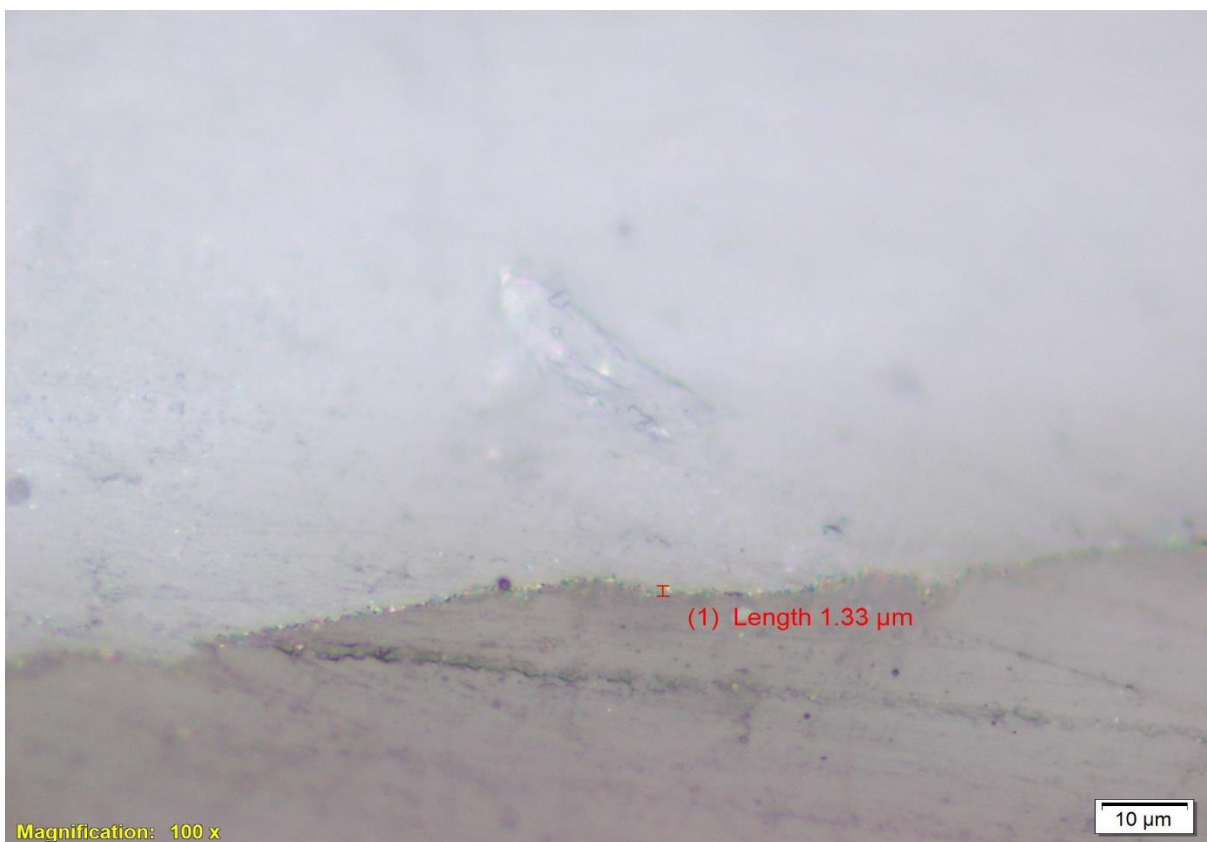
LAMPIRAN-LAMPIRAN



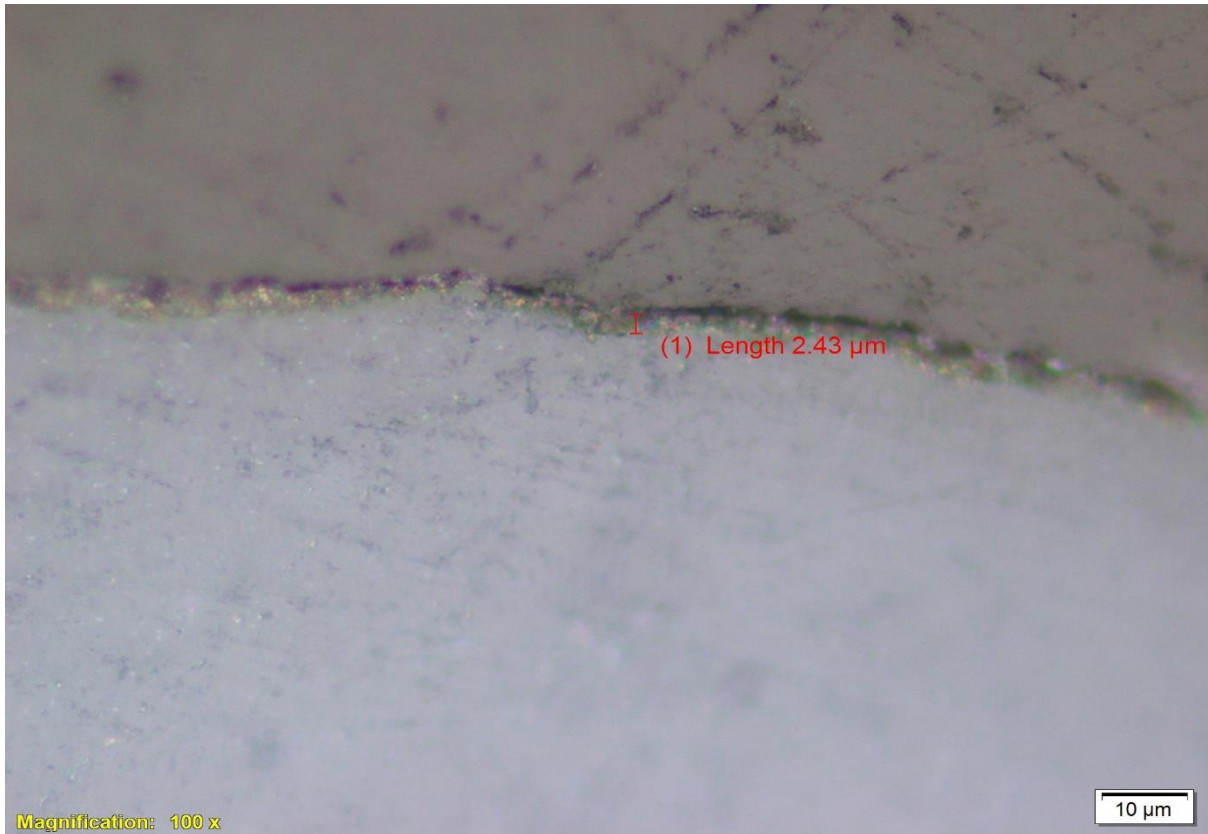
Hasil uji ketebalan mikro spesimen variasi waktu 4 menit sebesar 1,33 μm.



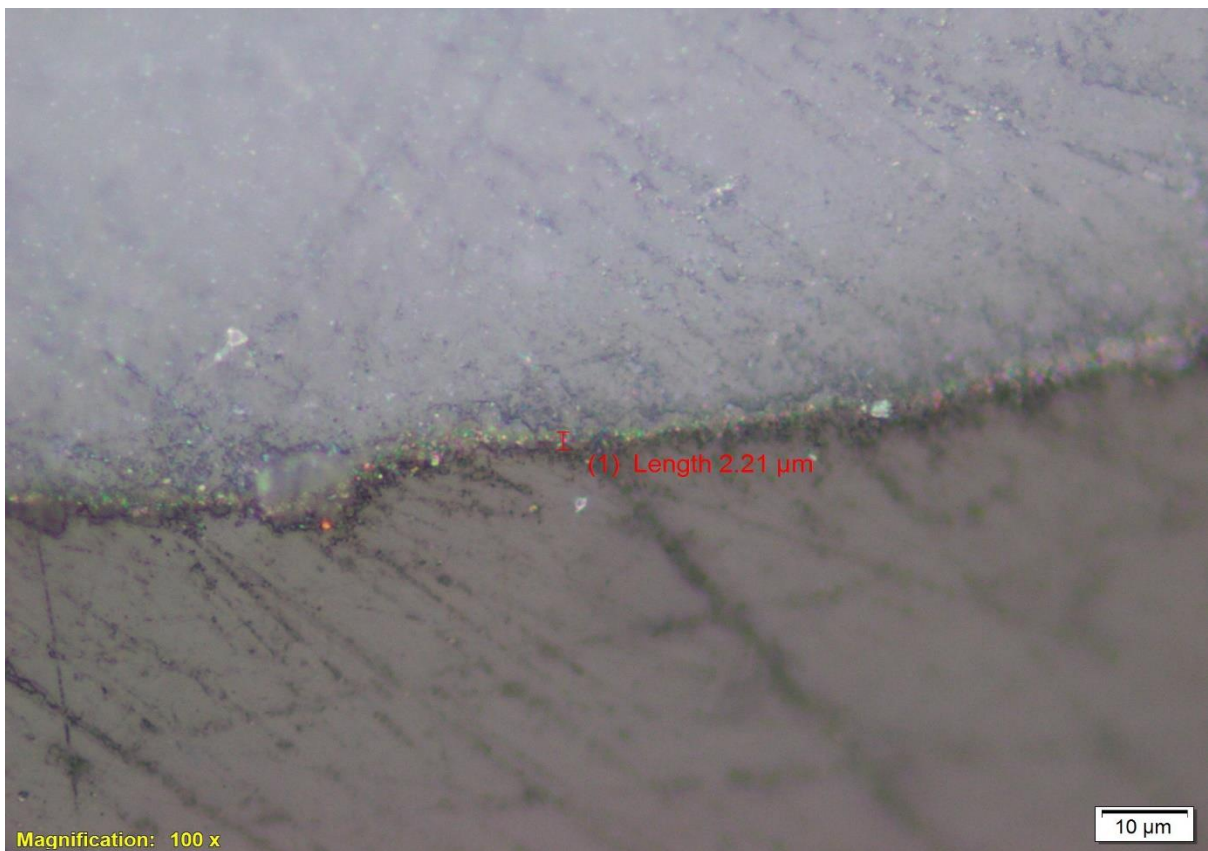
Hasil uji ketebalan mikro spesimen variasi waktu 4 menit sebesar 1,21 μm.



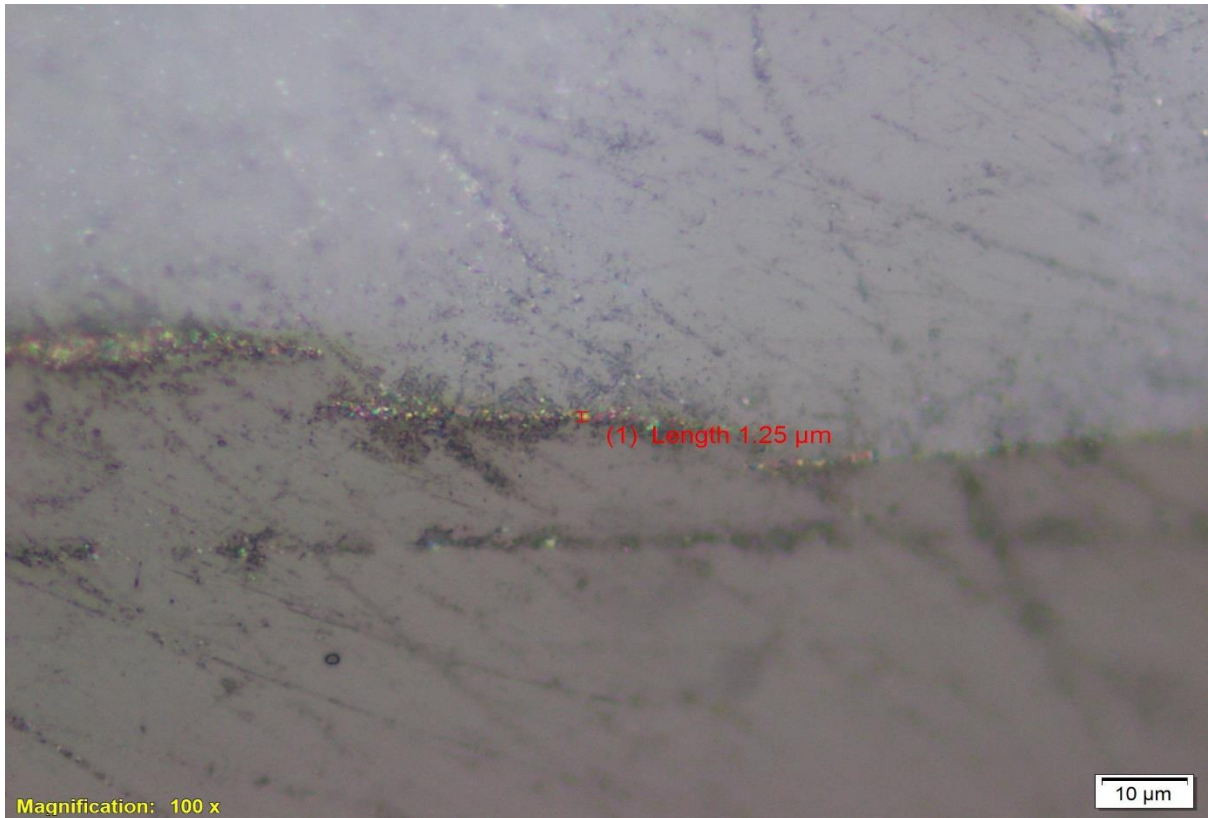
Hasil uji ketebalan mikro spesimen variasi waktu 4 menit sebesar 1,33 μm.



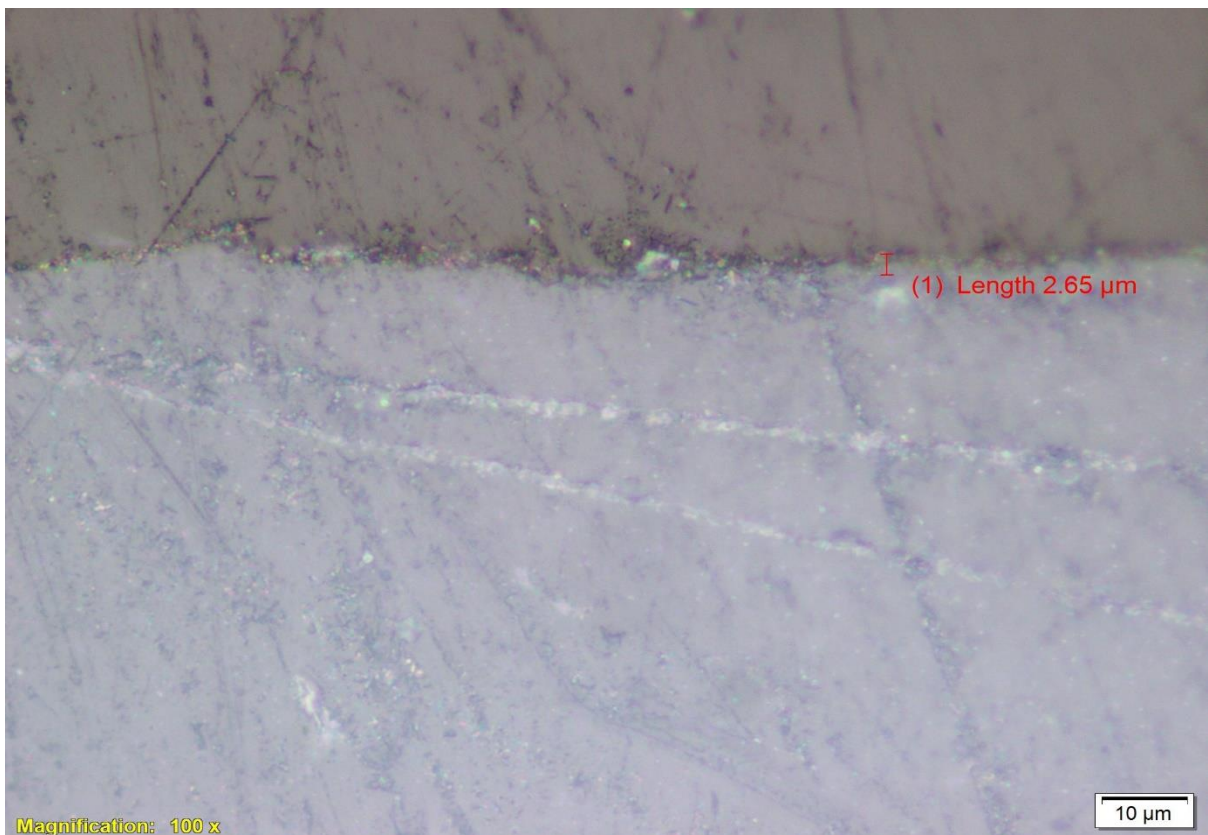
Hasil uji ketebalan mikro spesimen variasi waktu 6 menit sebesar 2,43 μm.



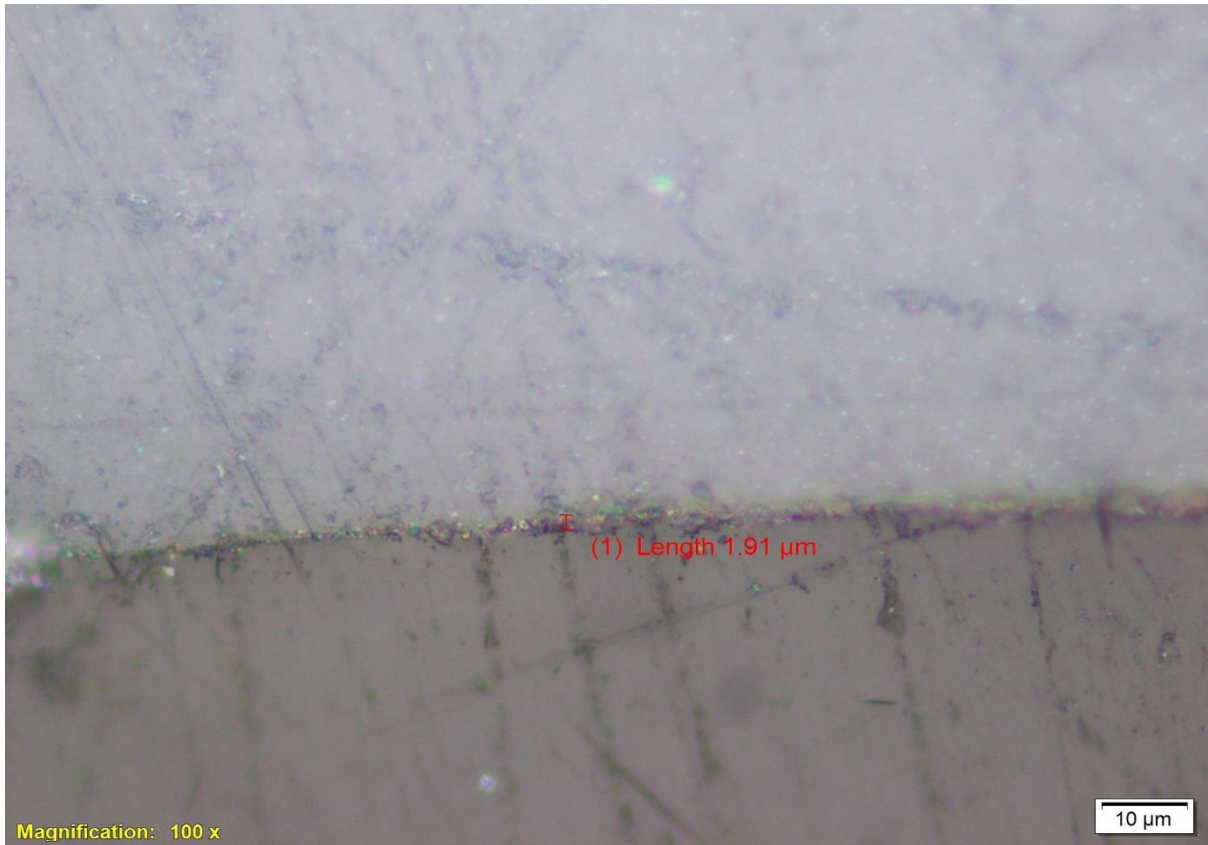
Hasil uji ketebalan mikro spesimen variasi waktu 6 menit sebesar 2,21 μm.



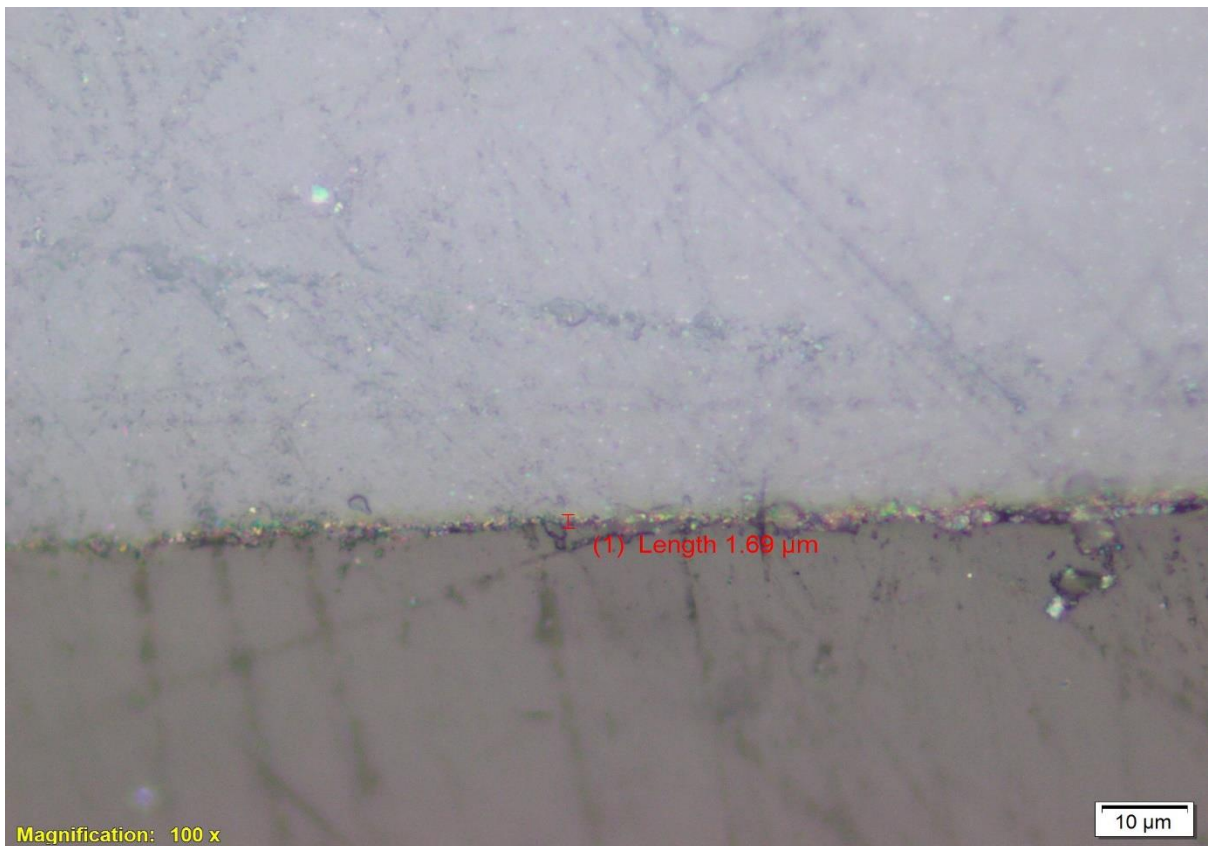
Hasil uji ketebalan mikro spesimen variasi waktu 6 menit sebesar 1,25 μm.



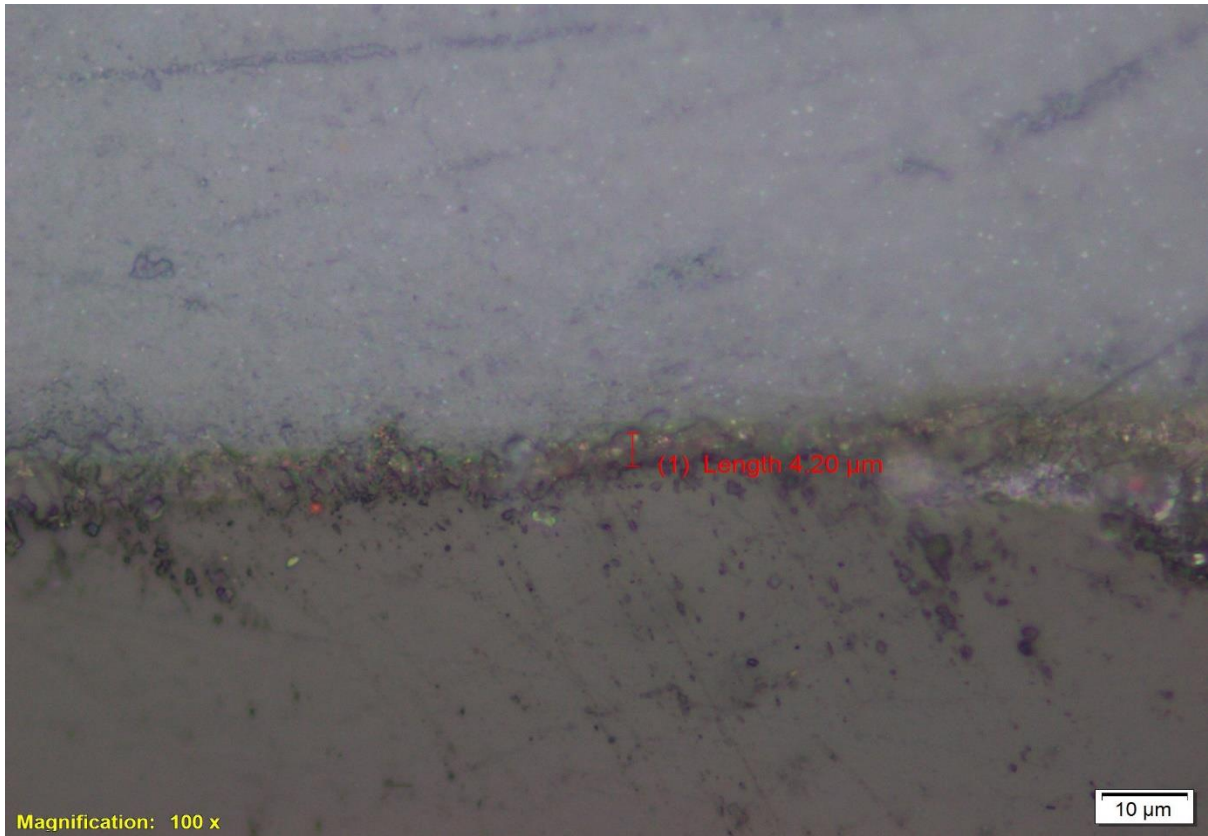
Hasil uji ketebalan mikro spesimen variasi waktu 8 menit sebesar 2,65 μm.



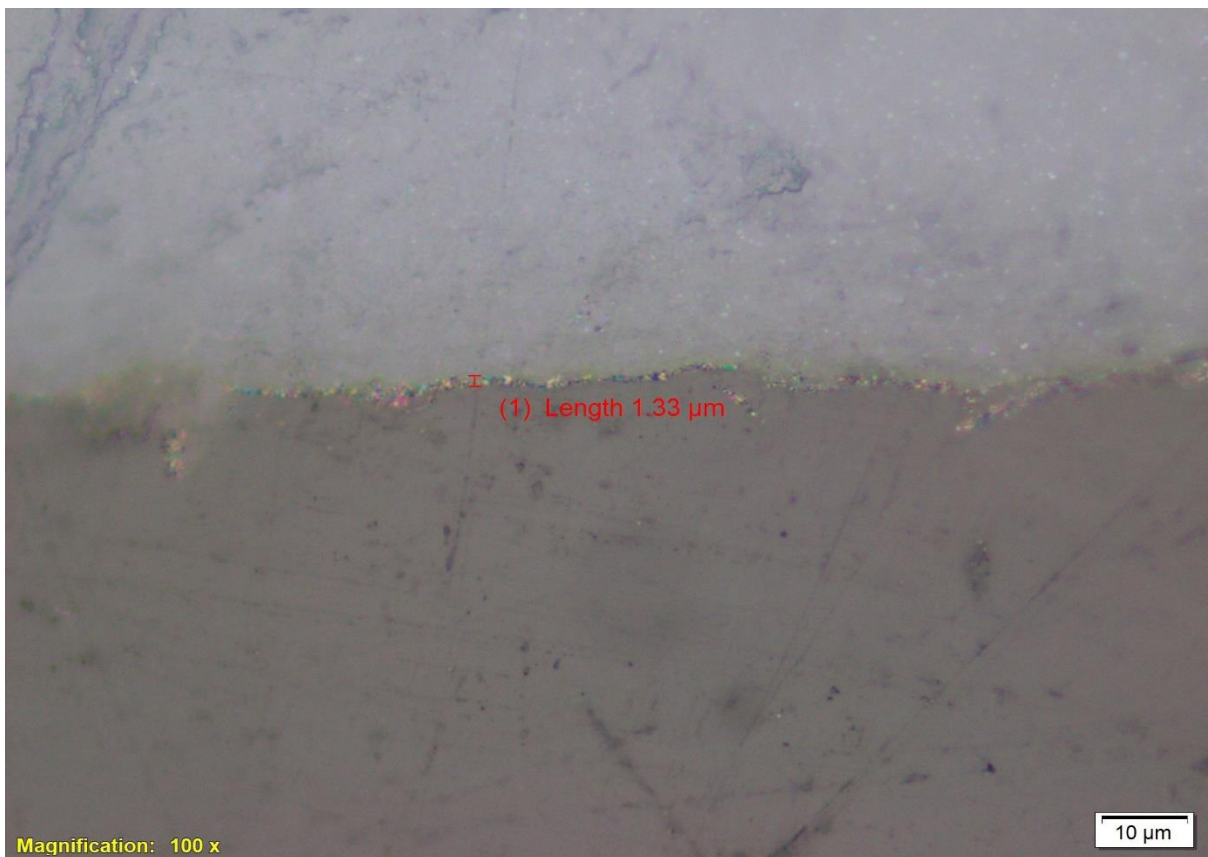
Hasil uji ketebalan mikro spesimen variasi waktu 8 menit sebesar 1,91 μm.



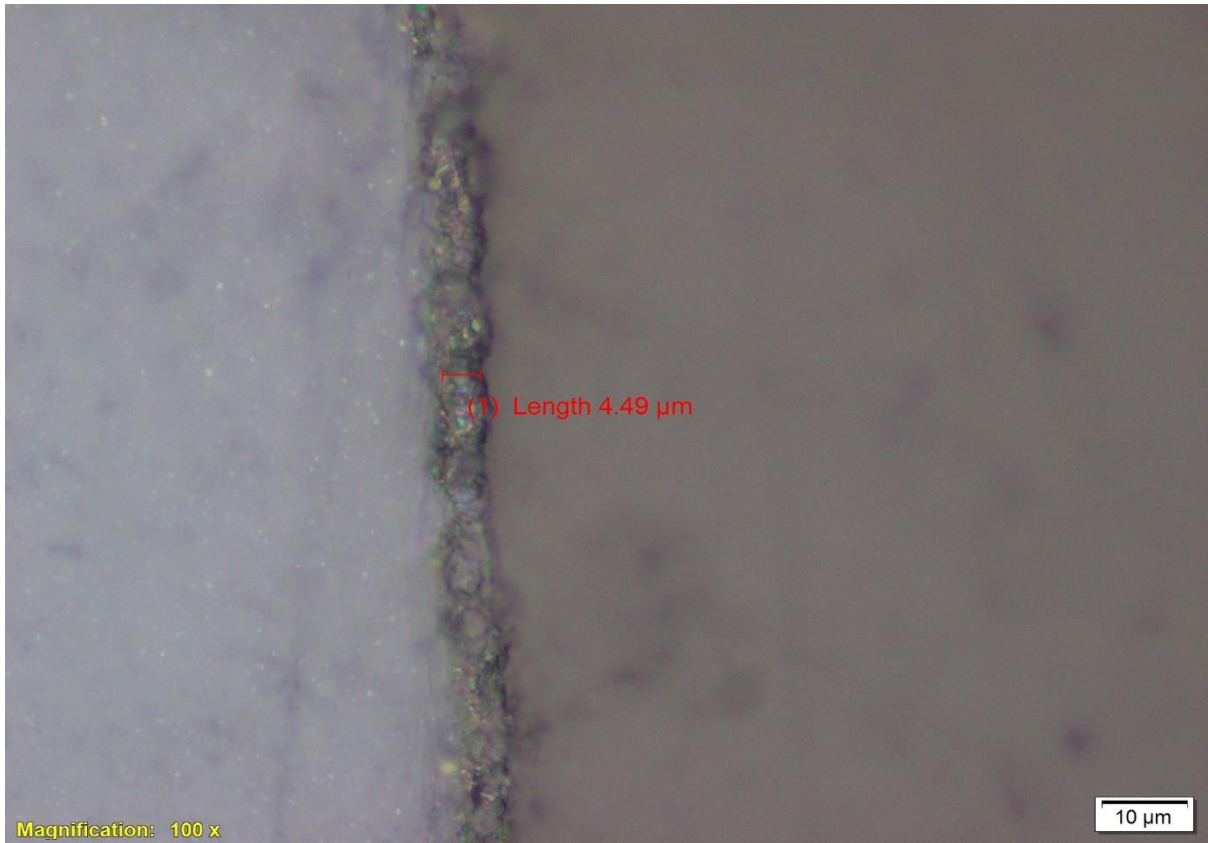
Hasil uji ketebalan mikro spesimen variasi waktu 8 menit sebesar 1,69 μm.



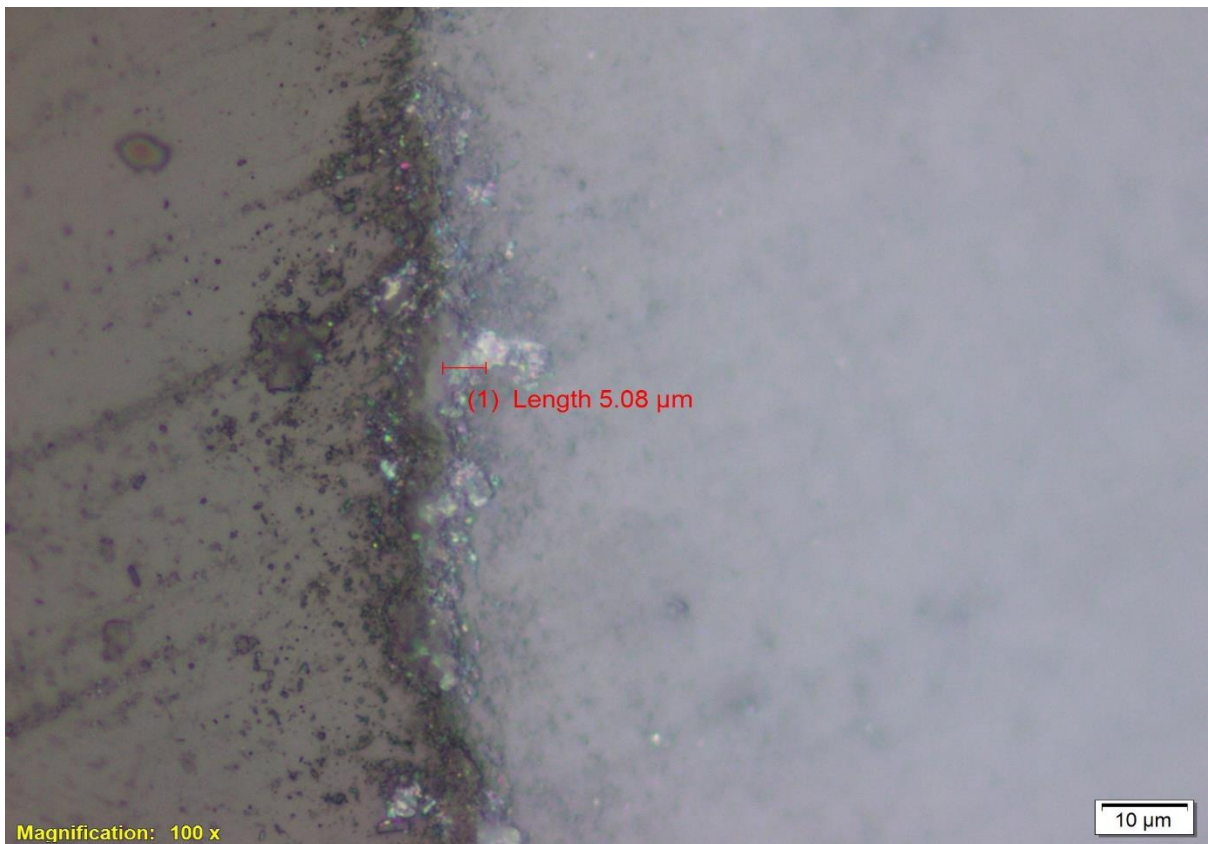
Hasil uji ketebalan mikro spesimen variasi waktu 10 menit sebesar 4,20 μm.



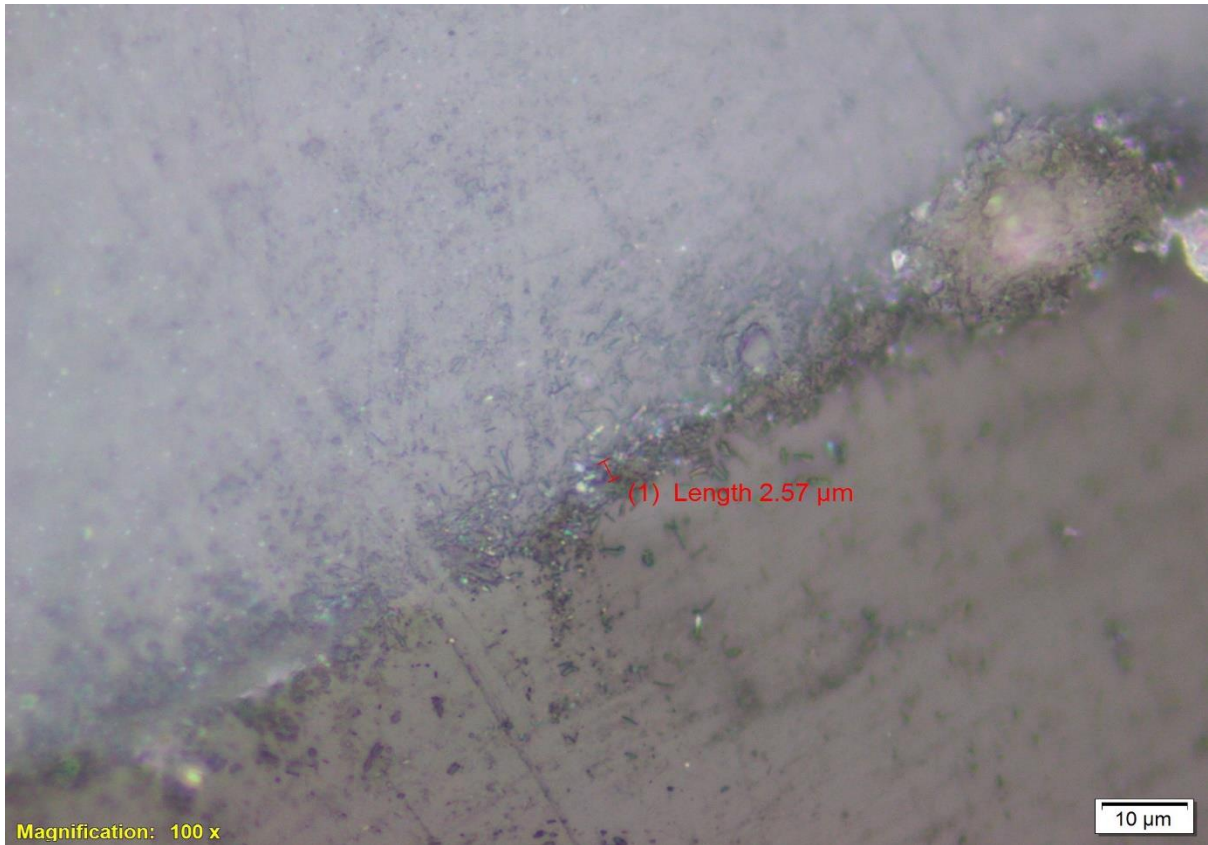
Hasil uji ketebalan mikro spesimen variasi waktu 10 menit sebesar 1,33 μm.



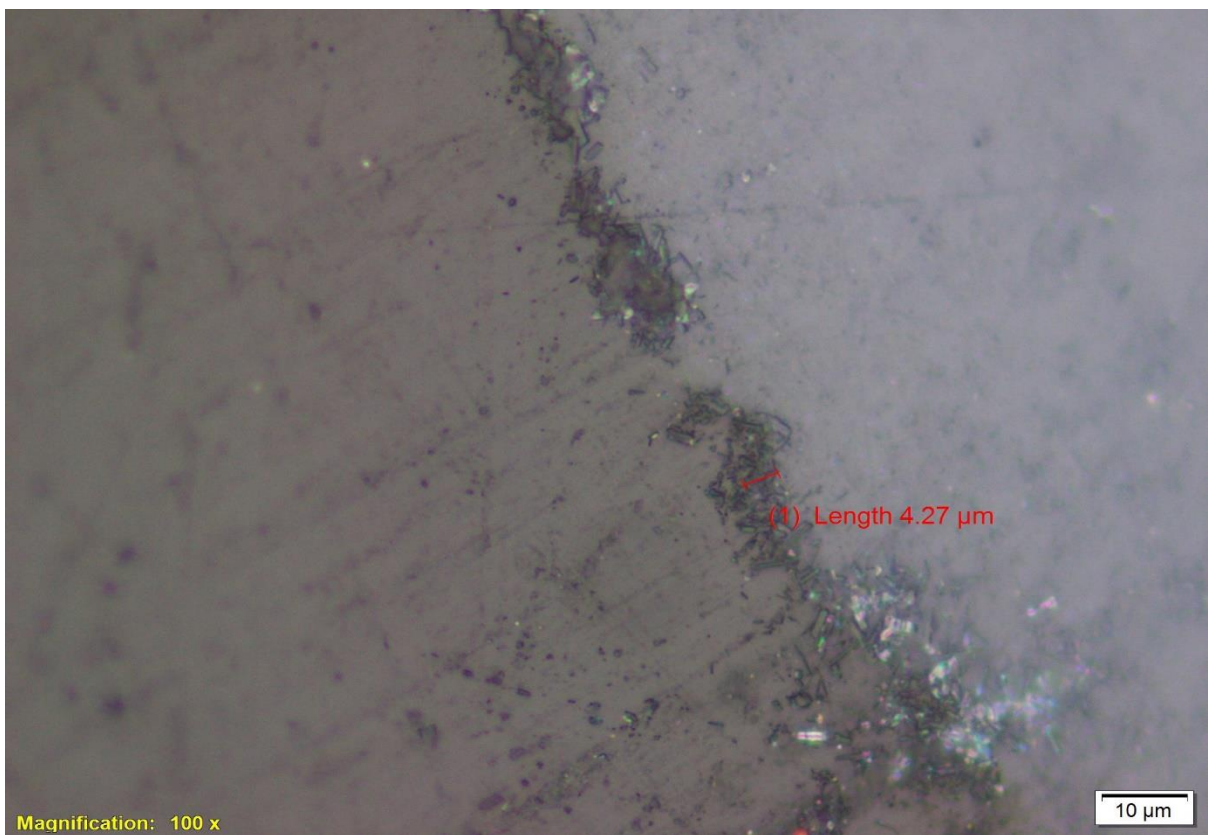
Hasil uji ketebalan mikro spesimen variasi waktu 10 menit sebesar 4,49 μm.



Hasil uji ketebalan mikro spesimen variasi waktu 12 menit sebesar 5,08 μm.



Hasil uji ketebalan mikro spesimen variasi waktu 12 menit sebesar 2,57 μm .



Hasil uji ketebalan mikro spesimen variasi waktu 12 menit sebesar 4,27 μm .

SPEED TABLE (m/sec)

GEAR RATIO $\frac{B}{A}$	$\frac{30}{80}$	$\frac{35}{75}$	$\frac{40}{70}$	$\frac{45}{65}$	$\frac{50}{60}$	$\frac{55}{55}$
B.G.	0.052	0.065	0.080	0.097	0.116	0.140
F.G.	0.50	0.62	0.76	0.91	1.10	1.32

GEAR RATIO $\frac{B}{A}$	$\frac{60}{50}$	$\frac{65}{45}$	$\frac{70}{40}$	$\frac{75}{35}$	$\frac{80}{30}$	
B.G.	0.167	0.202	0.244	0.299	0.372	
F.G.	1.59	1.91	2.31	2.83	3.52	

NO. of motor revolution 1430 r.p.m.

Speed table mesin *Ogoshi High Speed Universal Wear Testing Machine*

RIKEN-OGOSHI'S UNIVERSAL WEAR

TYPE	OAT U
CONTACTING PRESSURE	30-400kg/cm ²
ABRADING SPEED	0.052-3.52 m/s
MAX. LOAD	20kg
ABRADING LENGTH	67-600m
SPINDLE r.p.m.	
SPECIAL PERMISSION	219009
MANUFACTURE NO.	3143
TOKYO TESTING MACHINE MFG. CO., LTD	

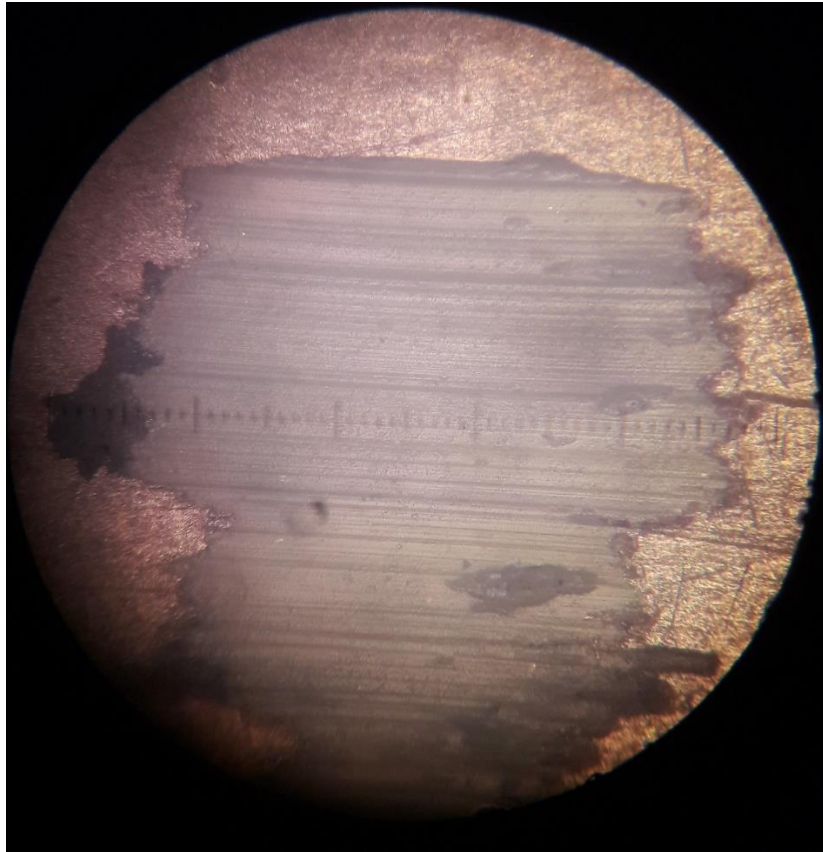
Spesifikasi mesin *Ogoshi High Speed Universal Wear Testing Machine*



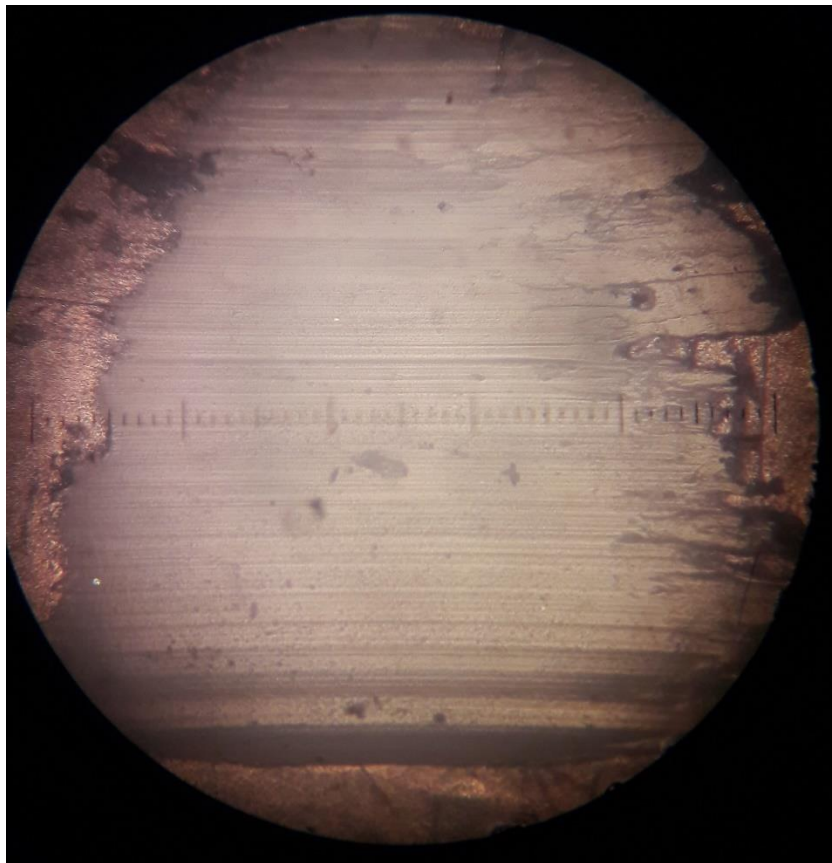
Pengambilan data hasil uji keausan



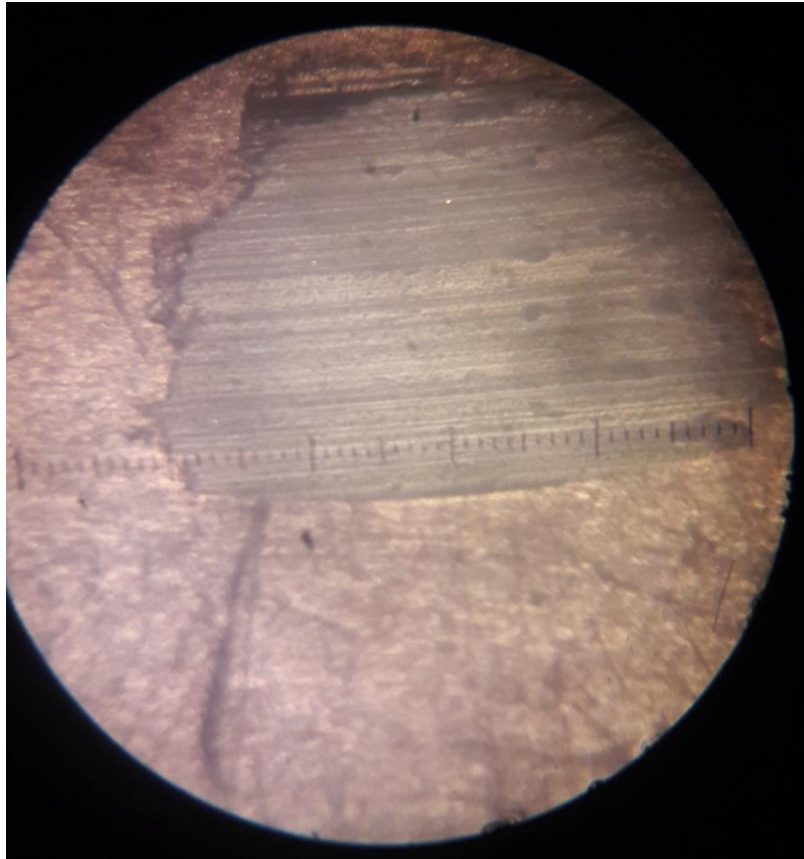
Hasil foto uji keausan spesimen variasi waktu 4 menit



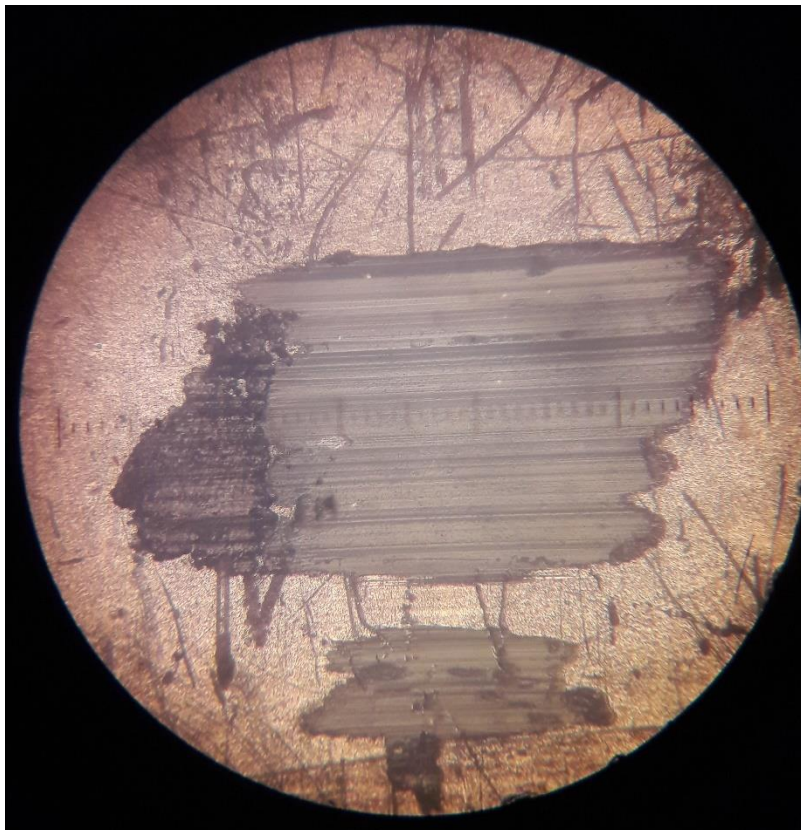
Hasil foto uji keausan spesimen variasi waktu 6 menit



Hasil foto uji keausan spesimen variasi waktu 8 menit



Hasil foto uji keausan spesimen variasi waktu 10 menit



Hasil foto uji keausan spesimen variasi waktu 12 menit