

↓ FLOOR

PIPING BILL OF MATERIAL

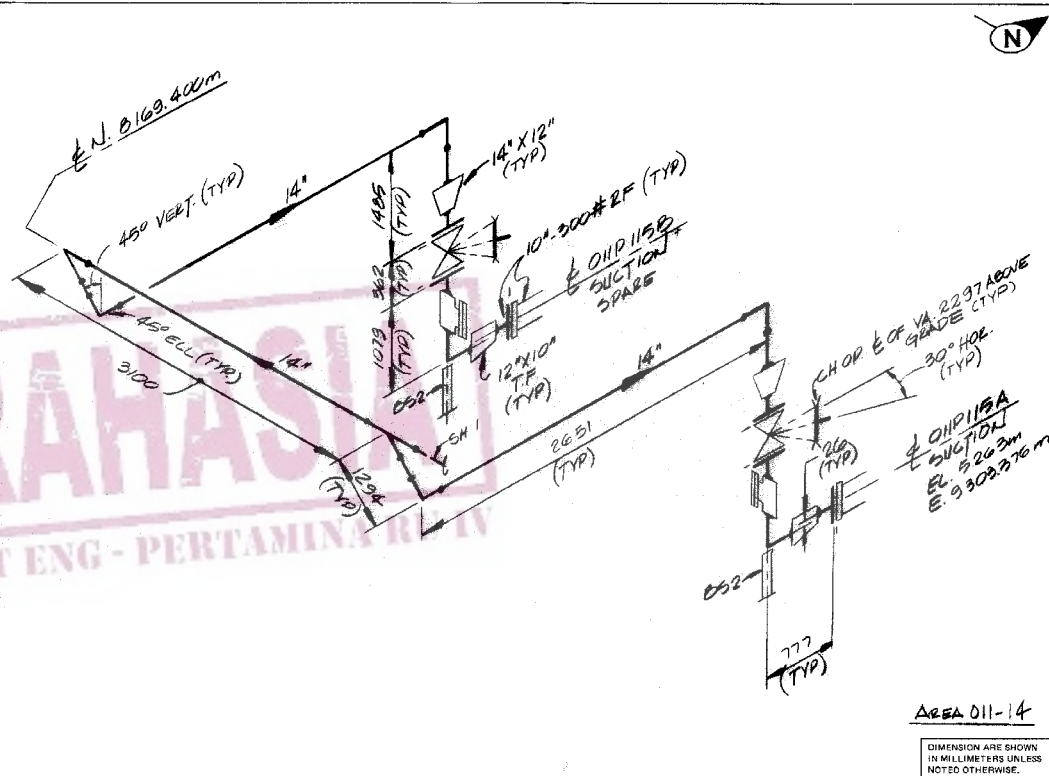
10/01/81

CONTRACT	AR	UN	LINE NO.	CLASS	SHT	REV
477804	01	11	1307	A	03	01

REV NO.	ITEM CODE	QUANTITY	SIZE	DESCRIPTION
SHOP FABRICATION MATERIAL				
	0355896	10M	14	PIPE STL WT SMLS STL A23-B
	0374114	2	12	ELL 90 DEG LR STD WT STL A234 WPB
	0374114	3	14	ELL 90 DEG LR STD WT STL A234 WPB
	0374120	2	14	ELL 45 DEG STD WT STL A234 WPB
	0374123	1	14	TEE STD WT STL A234 WPB
	0374125	2	14	REDUCER CONC STD WT STL A234 WPB
	0374126	2	12	REDUCER ECC STD WT STL A234 WPB
	0584395	4	12	FLG WN 150# RF STL STD BORE A105
	0584624	2	10	FLG WN 300# RF STL STD BORE A105
	0762073	2	12	STRAINER TEE TYPE 150# BW STL STD WEIGHT

FIELD ASSEMBLY MATERIAL				
	BS2	2		BASE SUPPORT PER FLUOR DWG 1-BS2
	0156061	2	12	GATE 150# RF STL FE TRIM
	067C139	6	12	GASKET 150# CORR DJAF RING 1/8" THK
	0670164	2	10	GASKET 300# CORR DJAF RING 1/8" THK
	0675648	48	7/8 x 4 1/2	STUD-BOLT A193 GR B7 W/A194 GR 2H NUTS
	0675648	32	1 x 6	STUD-BOLT A193 GR B7 W/A194 GR 2H NUTS
	0750427	6M		CHAIN #4/0 SPROCKET RIM BABEITT
	0761000	2	3 1/2	RIM ADJUSTABLE SPROCKET IMPACT TYPE

NOTICE: THIS DRAWING HAS NOT BEEN PUBLISHED AND IS THE SOLE PROPERTY OF FLUOR ENGINEERS AND CONSTRUCTORS, INC. AND IS LOANED TO THE BORROWER FOR HIS CONFIDENTIAL USE ONLY. IN CONSIDERATION OF THE LOAN OF THIS DRAWING, THE BORROWER PROMISES AND AGREES TO RETURN THIS DRAWING TO FLUOR ENGINEERS AND CONSTRUCTORS, INC. UPON COMPLETION OF THE PROJECT. NO REPRODUCTION OR ALTERATION OF THIS DRAWING IS TO BE MADE WITHOUT THE WRITTEN PERMISSION OF FLUOR ENGINEERS AND CONSTRUCTORS, INC. NOR USED FOR ANY PURPOSE OTHER THAN THAT FOR WHICH IT IS FURNISHED.



FLUOR			
FABRICATION SPECIFICATION SP-50-2		YES	NO
FABRICATION AND INSTALLATION DATA			
SHOP FAB	#1		
FIELD FAB			
INTERNAL CLEANING (FLUOR) IS			
POST WELD HEAT TREATMENT			
LOCAL SHOP PROCEDURE			
RAW WELD SCREWED JOINTS AS NOTED			
SHOP, GUIDES, CHABLES			
NO. Prod.	Dwg. No.	No. Reqd.	Dwg. No.
NONE			
NUMBER OF FRICTION WELDS			
3"	4"	6"	8" 10" 12"
SEQUENCE OF FRICTION			
DIFFICULTY FACTOR			
SCHEDULING DATA			
DILVIO4			
LINE COMMODITY: NAPHTHA		VAPOR	
CONDITION	PRESS. KG/CM ²	TEMP. (°C)	
DESIGN	30	23	
OPERATING	15	23	
PRESSURE	MIN.	MAX.	
INSULATION	IN	IS	IC
TOTAL COOL.			
AS NOTED			
TRACING			
STEAM TRACE			
NO.	SIZE		
ELECT. TRACE			
HEAT TRANSFER ELEMENT REQD.			
STRESS REVIEW REQUIRED			
PIECE MARK NUMBER			
COLOR	AREA	LINE NO.	PIECE NO.
Orange	11	1307A-MK-	(AS NOTED)
DIMENSION ARE SHOWN IN MILLIMETERS UNLESS NOTED OTHERWISE.			
DEF. PLAN DWG. NO. 2-011-011			
REF. P. AND DIAGRAM			
SEC. 12-13			
DATE DRAWN			
SHT. NO. 01			
CONTRACT NO. 477804			
LINE NO. AND CLASS 01 11			
SHT. NO. 13 OF 31			

M=METERS

FORM 6007 (PERTAMINA) PRINTED IN U.S.A.

BY: _____ DATE _____ MATL _____	BY: _____ DATE _____ MATL _____	BY: _____ DATE _____ MATL _____	BY: _____ DATE _____ MATL _____
REVIS: _____ NOTE & DATA _____ ROUTING _____ DIMENSIONS _____ MATERIAL _____	REVIS: _____ NOTE & DATA _____ ROUTING _____ DIMENSIONS _____ MATERIAL _____	REVIS: _____ NOTE & DATA _____ ROUTING _____ DIMENSIONS _____ MATERIAL _____	REVIS: _____ NOTE & DATA _____ ROUTING _____ DIMENSIONS _____ MATERIAL _____
CK. _____ APP. _____	CK. _____ APP. _____	CK. _____ APP. _____	CK. _____ APP. _____
STRESS _____ APP. _____	STRESS _____ APP. _____	STRESS _____ APP. _____	STRESS _____ APP. _____

APPROVED FOR CONSTRUCTION STRESS _____ APP. _____

DATE 9-22-81 MATL M.D.J.W. APP. A.E.