

LAMPIRAN

Hasil Output Uji SPSS Normalitas Profil Swelling Perancah

a. Menit ke-30

Tests of Normality						
	Kolmogorov-Smirnov ^a			Shapiro-Wilk		
	Statistic	Df	Sig.	Statistic	df	Sig.
PRP	.228	3	.	.982	3	.743
Non PRP	.362	3	.	.804	3	.123

b. Jam ke-1

Tests of Normality						
	Kolmogorov-Smirnov ^a			Shapiro-Wilk		
	Statistic	df	Sig.	Statistic	df	Sig.
PRP	.243	3	.	.972	3	.679
Non PRP	.286	3	.	.931	3	.491

c. Jam ke-1,5

Tests of Normality						
	Kolmogorov-Smirnov ^a			Shapiro-Wilk		
	Statistic	df	Sig.	Statistic	df	Sig.
PRP	.247	3	.	.969	3	.665
Non PRP	.209	3	.	.992	3	.825

d. Jam ke-2

Tests of Normality						
	Kolmogorov-Smirnov ^a			Shapiro-Wilk		
	Statistic	df	Sig.	Statistic	df	Sig.
PRP	.183	3	.	.999	3	.932
Non PRP	.235	3	.	.978	3	.716

e. Jam ke-2,5

Tests of Normality						
	Kolmogorov-Smirnov ^a			Shapiro-Wilk		
	Statistic	df	Sig.	Statistic	df	Sig.
PRP	.219	3	.	.987	3	.784
Non PRP	.349	3	.	.831	3	.191

f. Jam ke-3

Tests of Normality						
	Kolmogorov-Smirnov ^a			Shapiro-Wilk		
	Statistic	df	Sig.	Statistic	df	Sig.
PRP	.187	3	.	.998	3	.915
Non PRP	.326	3	.	.874	3	.306

g. Jam ke-3,5

Tests of Normality						
	Kolmogorov-Smirnov ^a			Shapiro-Wilk		
	Statistic	df	Sig.	Statistic	df	Sig.
PRP	.199	3	.	.995	3	.865
Non PRP	.330	3	.	.867	3	.288

h. Jam ke-4

Tests of Normality						
	Kolmogorov-Smirnov ^a			Shapiro-Wilk		
	Statistic	df	Sig.	Statistic	df	Sig.
PRP	.210	3	.	.991	3	.819
Non PRP	.293	3	.	.923	3	.462

i. Jam ke-4,5

Tests of Normality

	Kolmogorov-Smirnov ^a			Shapiro-Wilk		
	Statistic	Df	Sig.	Statistic	df	Sig.
PRP	.222	3	.	.986	3	.770
Non PRP	.312	3	.	.896	3	.373

j. Jam ke-5

Tests of Normality

	Kolmogorov-Smirnov ^a			Shapiro-Wilk		
	Statistic	df	Sig.	Statistic	df	Sig.
PRP	.309	3	.	.900	3	.385
Non PRP	.296	3	.	.919	3	.448

k. Jam ke-5,5

Tests of Normality

	Kolmogorov-Smirnov ^a			Shapiro-Wilk		
	Statistic	df	Sig.	Statistic	df	Sig.
PRP	.232	3	.	.980	3	.727
Non PRP	.340	3	.	.848	3	.235

l. Jam ke-6

Tests of Normality

	Kolmogorov-Smirnov ^a			Shapiro-Wilk		
	Statistic	df	Sig.	Statistic	df	Sig.
PRP	.176	3	.	1.000	3	.979
Non PRP	.369	3	.	.788	3	.086

m. Jam ke-24

Tests of Normality						
	Kolmogorov-Smirnov ^a			Shapiro-Wilk		
	Statistic	df	Sig.	Statistic	df	Sig.
PRP	.178	3	.	.999	3	.952
Non PRP	.365	3	.	.798	3	.110

a. Lilliefors Significance Correction

Hasil Output Uji SPSS Independent Sample t Test Profil Swelling Perancah

a. Menit ke-30

Independent Samples Test perancah menit ke-30

	Levene's Test for Equality of Variances	t-test for Equality of Means								
		F	Sig.	t	df	Sig. (2-tailed)	Mean Difference	Std. Error Difference	95% Confidence Interval of the Difference	
									Lower	Upper
Swelling	Equal variances assumed	.401	.561	4.613	4	.010	216.91333	47.02475	86.35169	347.47498
	Equal variances not assumed			4.613	3.497	.014	216.91333	47.02475	78.59461	355.23206

b. Jam ke-1

Independent Samples Test perancah jam ke-1

	Levene's Test for Equality of Variances	t-test for Equality of Means								
		F	Sig.	t	Df	Sig. (2-tailed)	Mean Difference	Std. Error Difference	95% Confidence Interval of the Difference	
									Lower	Upper
Swelling	Equal variances assumed	3.988	.117	1.883	4	.133	103.38333	54.91239	-49.07791	255.84458
	Equal variances not assumed			1.883	2.211	.188	103.38333	54.91239	-112.52586	319.29253

c. Jam ke-1,5

Independent Samples Test perancah jam ke-1,5

		Levene's Test for Equality of Variances		t-test for Equality of Means						
		F	Sig.	t	df	Sig. (2-tailed)	Mean Difference	Std. Error Difference	95% Confidence Interval of the Difference	
									Lower	Upper
Swelling	Equal variances assumed	5.282	.083	2.104	4	.103	128.39667	61.03143	-41.05374	297.84707
	Equal variances not assumed			2.104	2.084	.165	128.39667	61.03143	-124.33866	381.13200

d. Jam ke-2

Independent Samples Test perancah jam ke-2

		Levene's Test for Equality of Variances		t-test for Equality of Means						
		F	Sig.	T	df	Sig. (2-tailed)	Mean Difference	Std. Error Difference	95% Confidence Interval of the Difference	
									Lower	Upper
Swelling	Equal variances assumed	1.872	.243	2.526	4	.065	120.69000	47.78817	-11.99123	253.37123
	Equal variances not assumed			2.526	2.395	.107	120.69000	47.78817	-55.58788	296.96788

e. Jam ke-2,5

Independent Samples Test perancah jam ke-2,5

		Levene's Test for Equality of Variances		t-test for Equality of Means						
		F	Sig.	T	df	Sig. (2-tailed)	Mean Difference	Std. Error Difference	95% Confidence Interval of the Difference	
									Lower	Upper
Swelling	Equal variances assumed	2.097	.221	2.090	4	.105	100.70667	48.19159	-33.09465	234.50798
	Equal variances not assumed			2.090	2.501	.146	100.70667	48.19159	-71.52017	272.93350

f. Jam ke-3

Independent Samples Test perancah jam ke-3

		Levene's Test for Equality of Variances		t-test for Equality of Means						
		F	Sig.	t	df	Sig. (2-tailed)	Mean Difference	Std. Error Difference	95% Confidence Interval of the Difference	
								Lower		Upper
Swelling	Equal variances assumed	.545	.501	.705	4	.519	19.80667	28.07946	-58.15442	97.76775
	Equal variances not assumed			.705	3.176	.529	19.80667	28.07946	-66.82031	106.43364

g. Jam ke-3,5

Independent Samples Test perancah jam ke-3,5

		Levene's Test for Equality of Variances		t-test for Equality of Means						
		F	Sig.	t	df	Sig. (2-tailed)	Mean Difference	Std. Error Difference	95% Confidence Interval of the Difference	
								Lower		Upper
Swelling	Equal variances assumed	.000	.996	.426	4	.692	10.09667	23.68127	-55.65308	75.84642
	Equal variances not assumed			.426	3.962	.692	10.09667	23.68127	-55.90070	76.09403

h. Jam ke-4

Independent Samples Test perancah jam ke-4

		Levene's Test for Equality of Variances		t-test for Equality of Means						
		F	Sig.	t	Df	Sig. (2-tailed)	Mean Difference	Std. Error Difference	95% Confidence Interval of the Difference	
								Lower		Upper
Swelling	Equal variances assumed	.005	.947	-.350	4	.744	-10.34333	29.55035	-92.38825	71.70158
	Equal variances not assumed			-.350	3.997	.744	-10.34333	29.55035	-92.41466	71.72799

i. Jam ke-4,5

Independent Samples Test perancah jam ke-4,5

		Levene's Test for Equality of Variances		t-test for Equality of Means						
		F	Sig.	t	df	Sig. (2-tailed)	Mean Difference	Std. Error Difference	95% Confidence Interval of the Difference	
									Lower	Upper
Swelling	Equal variances assumed	4.608	.098	-1.026	4	.393	-20.37667	19.86663	-75.53529	34.78195
	Equal variances not assumed			-1.026	2.452	.395	-20.37667	19.86663	-92.39425	51.64092

j. Jam ke-5

Independent Samples Test perancah jam ke-5

		Levene's Test for Equality of Variances		t-test for Equality of Means						
		F	Sig.	t	df	Sig. (2-tailed)	Mean Difference	Std. Error Difference	95% Confidence Interval of the Difference	
									Lower	Upper
Swelling	Equal variances assumed	1.553	.281	-.958	4	.393	-23.28333	24.31590	-90.79509	44.22843
	Equal variances not assumed			-.958	3.144	.406	-23.28333	24.31590	-98.70248	52.13581

k. Jam ke-5,5

Independent Samples Test perancah jam ke-5,5

		Levene's Test for Equality of Variances		t-test for Equality of Means						
		F	Sig.	t	df	Sig. (2-tailed)	Mean Difference	Std. Error Difference	95% Confidence Interval of the Difference	
									Lower	Upper
Swelling	Equal variances assumed	3.399	.139	-.838	4	.449	-19.33667	23.06780	-83.38314	44.70981
	Equal variances not assumed			-.838	2.781	.468	-19.33667	23.06780	-96.12186	57.44853

l. Jam ke-6

Independent Samples Test perancah jam ke-6

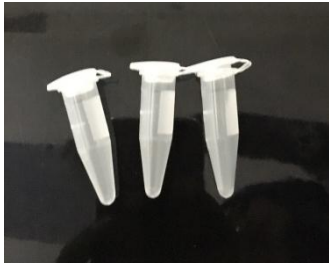
		Levene's Test for Equality of Variances		t-test for Equality of Means						
		F	Sig.	t	df	Sig. (2-tailed)	Mean Difference	Std. Error Difference	95% Confidence Interval of the Difference	
									Lower	Upper
Swelling	Equal variances assumed	4.743	.095	-.618	4	.570	-15.36000	24.86335	-84.39171	53.67171
	Equal variances not assumed			-.618	2.597	.587	-15.36000	24.86335	-101.91579	71.19579

m. Jam ke-24

Independent Samples Test perancah jam ke-24

		Levene's Test for Equality of Variances		t-test for Equality of Means						
		F	Sig.	t	df	Sig. (2-tailed)	Mean Difference	Std. Error Difference	95% Confidence Interval of the Difference	
									Lower	Upper
Swelling	Equal variances assumed	5.468	.080	-.462	4	.668	-12.27000	26.57920	-86.06570	61.52570
	Equal variances not assumed			-.462	2.494	.682	-12.27000	26.57920	-107.43524	82.89524

Lampiran Gambar



Microtube Eppendrofe



Yellow tip



Blue tip



Timbangan



Centrifuge



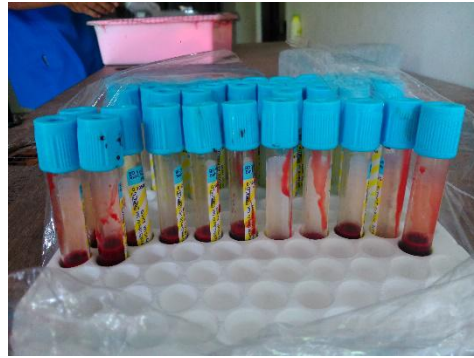
Oven dan Inkubator



Micropipette



Proses Pengambilan Darah



Whole Blood



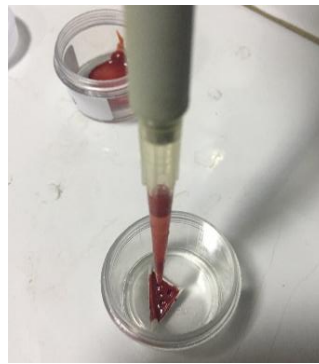
Pengambilan darah tikus melalui vena lateralis



Pemindahan *Whole Blood* ke *Microtube*



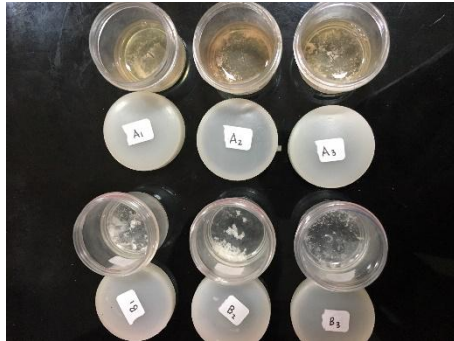
Proses Sentrifugasi



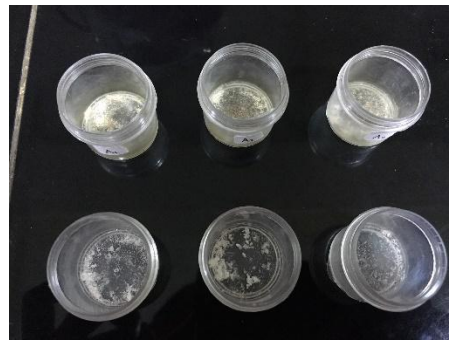
Proses inkorporasi PRP dengan metode tetes



Perancah yang telah di inkorporasi dengan PRP



Perancah setelah perendaman
dalam PBS selama 48 jam



Perancah kering setelah setelah
mengalami *gel fraction*