

LAMPIRAN

LAMPIRAN 1. Hasil Output Uji SPSS Normalitas Profil Weight Loss Perancah Koran Buatan Minggu Ke-2

Descriptive			Statistic	Std. Error
PRP	Mean		84.3400	4.02444
	95% Confidence Interval for Mean	Lower Bound	67.0242	
		Upper Bound	101.6558	
	5% Trimmed Mean		.	
	Median		84.2400	
	Variance		48.588	
	Std. Deviation		6.97054	
	Minimum		77.42	
	Maximum		91.36	
	Range		13.94	
	Interquartile Range		.	
	Skewness		.065	1.225
	Kurtosis		.	.
	Mean		26.8467	9.56558
Non PRP	95% Confidence Interval for Mean	Lower Bound	-14.3107	
		Upper Bound	68.0040	
	5% Trimmed Mean		.	
	Median		21.8800	
	Variance		274.501	
	Std. Deviation		16.56807	
	Minimum		13.33	
	Maximum		45.33	
	Range		32.00	
	Interquartile Range		.	
	Skewness		1.228	1.225
	Kurtosis		.	.

LAMPIRAN 2. Hasil Output Uji SPSS Normalitas Profil Weight Loss Perancah Koran Buatan Minggu Ke-4

Descriptives			Statistic	Std. Error
PRP	Mean		87.2500	2.25436
	95% Confidence Interval for Mean	Lower Bound	77.5503	
		Upper Bound	96.9497	
	5% Trimmed Mean		.	
	Median		85.4500	
	Variance		15.246	
	Std. Deviation		3.90466	
	Minimum		84.57	
	Maximum		91.73	
	Range		7.16	
	Interquartile Range		.	
	Skewness		1.634	1.225
	Kurtosis		.	.
	Mean		17.2367	1.38420
Non PRP	95% Confidence Interval for Mean	Lower Bound	11.2809	
		Upper Bound	23.1924	
	5% Trimmed Mean		.	

Median	16.0000	
Variance	5.748	
Std. Deviation	2.39751	
Minimum	15.71	
Maximum	20.00	
Range	4.29	
Interquartile Range	.	
Skewness	1.704	1.225
Kurtosis	.	.

LAMPIRAN 3. Hasil Output Uji SPSS Normalitas Profil Weight Loss Perancah Koral Buatan Minggu Ke-6

Descriptives			Statistic	Std. Error
PRP	Mean		82.9067	1.83855
	95% Confidence Interval for Mean	Lower Bound	74.9960	
		Upper Bound	90.8173	
	5% Trimmed Mean		.	
	Median		84.1400	
	Variance		10.141	
	Std. Deviation		3.18447	
	Minimum		79.29	
	Maximum		85.29	
	Range		6.00	
	Interquartile Range		.	
	Skewness		-1.481	1.225
	Kurtosis		.	.
	Non PRP	Mean		30.2233
95% Confidence Interval for Mean		Lower Bound	24.8211	
		Upper Bound	35.6255	
5% Trimmed Mean			.	
Median			30.6700	
Variance			4.729	
Std. Deviation			2.17468	
Minimum			27.86	
Maximum			32.14	
Range			4.28	
Interquartile Range			.	
Skewness			-.885	1.225
Kurtosis			.	.

LAMPIRAN 4. Hasil Output Uji SPSS Normalitas Profil Weight Loss Perancah Koral Buatan Minggu Ke-8

Descriptives			Statistic	Std. Error
PRP	Mean		83.4933	.42081
	95% Confidence Interval for Mean	Lower Bound	81.6828	
		Upper Bound	85.3039	
	5% Trimmed Mean		.	
	Median		83.3300	
	Variance		.531	
	Std. Deviation		.72886	
	Minimum		82.86	

	Maximum		84.29	
	Range		1.43	
	Interquartile Range		.	
	Skewness		.958	1.225
	Kurtosis		.	.
	Mean		10.0800	5.04008
	95% Confidence Interval for Mean	Lower Bound	-11.6057	
		Upper Bound	31.7657	
	5% Trimmed Mean		.	
	Median		6.6700	
	Variance		76.207	
Non PRP	Std. Deviation		8.72968	
	Minimum		3.57	
	Maximum		20.00	
	Range		16.43	
	Interquartile Range		.	
	Skewness		1.490	1.225
	Kurtosis		.	.

LAMPIRAN 5. Hasil Output Uji SPSS Normalitas Profil Weight Loss Perancah Kelompok Inkorporasi (A) Dan Kelompok Inkorporasi (B).

		Descriptives							
		N	Mean	Std. Deviation	Std. Error	95% Confidence Interval for Mean		Minimum	Maximum
						Lower Bound	Upper Bound		
PRP	Minggu Ke 2	3	84.3400	6.97054	4.02444	67.0242	101.6558	77.42	91.36
	Minggu Ke 4	3	87.2500	3.90466	2.25436	77.5503	96.9497	84.57	91.73
	Minggu Ke 6	3	82.9067	3.18447	1.83855	74.9960	90.8173	79.29	85.29
	Minggu Ke 8	3	83.4933	.72886	.42081	81.6828	85.3039	82.86	84.29
	Total	12	84.4975	4.07246	1.17562	81.9100	87.0850	77.42	91.73
Non PRP	Minggu Ke 2	3	26.8467	16.56807	9.56558	-14.3107	68.0040	13.33	45.33
	Minggu Ke 4	3	17.2367	2.39751	1.38420	11.2809	23.1924	15.71	20.00
	Minggu Ke 6	3	30.2233	2.17468	1.25555	24.8211	35.6255	27.86	32.14
	Minggu Ke 8	3	10.0800	8.72968	5.04008	-11.6057	31.7657	3.57	20.00
	Total	12	21.0967	11.60034	3.34873	13.7262	28.4672	3.57	45.33

LAMPIRAN 6. Hasil Output Uji SPSS One Way Anova Profil Weight Loss Perancah Kelompok Inkorporasi (A) dan Kelompok Inkorporasi (B).

		ANOVA				
		Sum of Squares	df	Mean Square	F	Sig.
PRP	Between Groups	33.420	3	11.140	.598	.634
	Within Groups	149.014	8	18.627		
	Total	182.434	11			
Non PRP	Between Groups	757.875	3	252.625	2.798	.109
	Within Groups	722.371	8	90.296		
	Total	1480.246	11			

LAMPIRAN 7. Gambar Penelitian



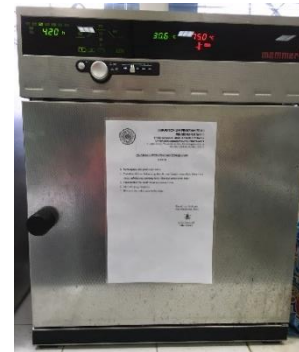
Gambar 4.
Vacutainer
ACD



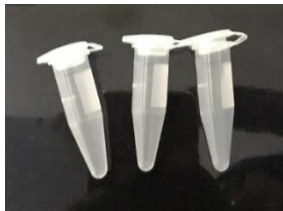
Gambar 3.
Micropipette



Gambar 2.
Timbangan



Gambar 1. Oven dan
Inkubator



Gambar 7. Microtube
Eppendorf



Gambar 6. Blue tip



Gambar 5. Yellow tip



Gambar 8. Centrifuge
refrigerated Rotina 35R



Gambar 10. Tikus strain wistar



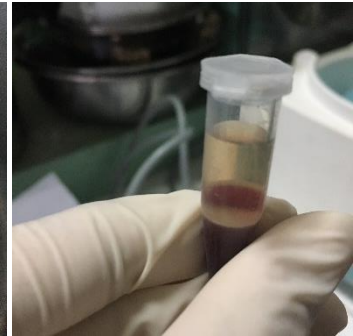
Gambar 9. Persiapan pengambilan
darah tikus



Gambar 12. Memindahkan darah dari tabung ACD ke microtube



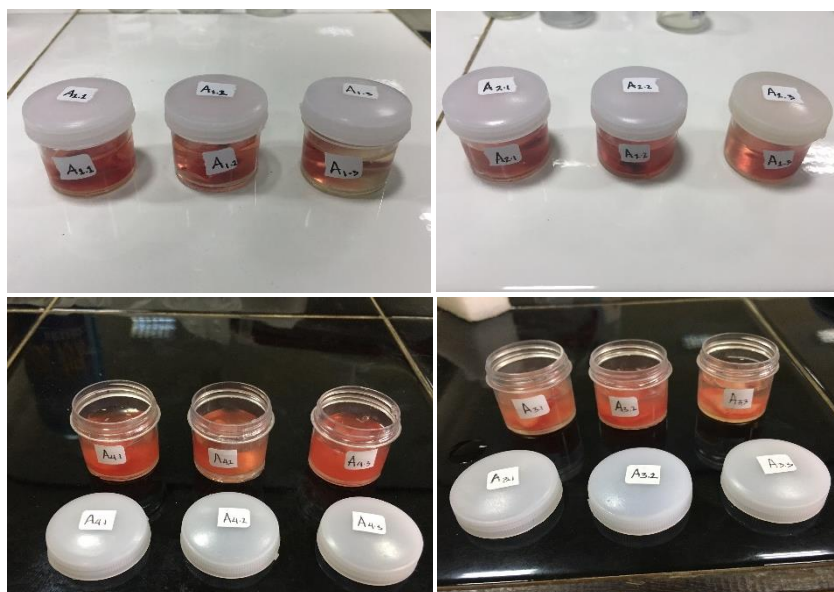
Gambar 13. sentrifugasi untuk pembuatan PRP



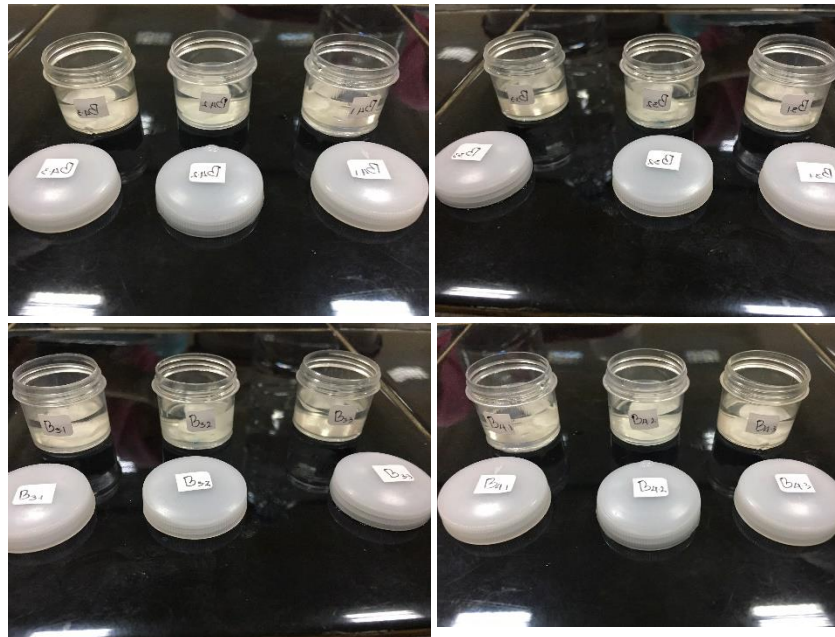
Gambar 11. Hasil sentrifugasi; lapisan plasma, *buffy coat* dan eritrosit



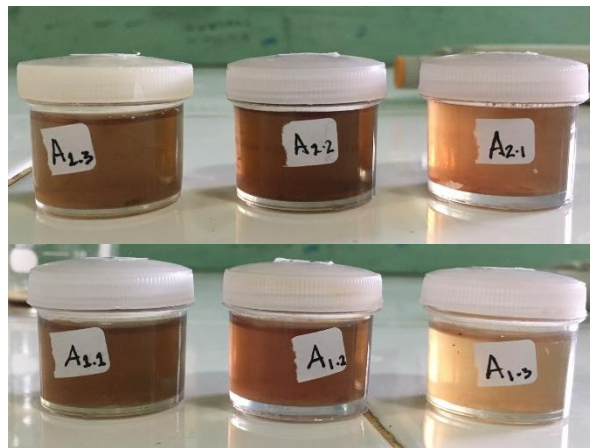
Gambar 14. Proses inkorporasi perancah dengan teknik tetes selama 15 menit



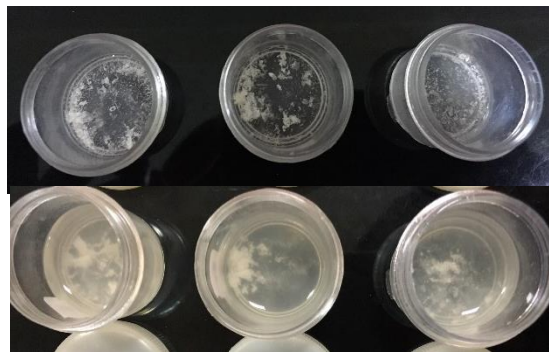
Gambar 15. Sampel kelompok perancah inkorporasi PRP (A) minggu ke-2, ke-4, ke-6 dan ke-8 sebelum inkubasi dalam larutan *aquadest*



Gambar 16. Sampel kelompok perancah non-inkorporasi PRP (B) ke-2, ke-4, ke-6 dan ke-8 sebelum inkubasi.



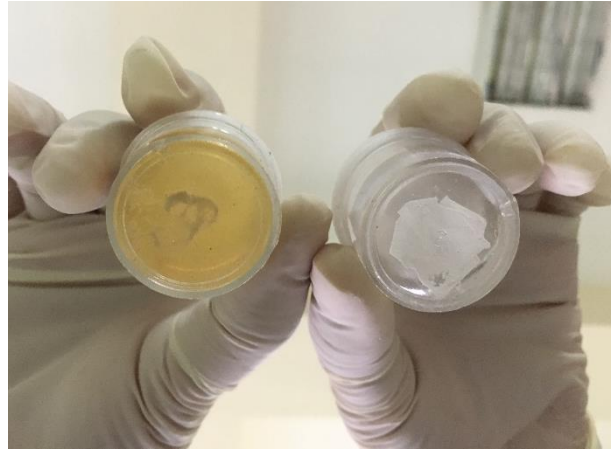
Gambar 17. Hasil inkubasi kelompok perancah inkorporasi PRP (A) minggu ke-2 dan minggu ke-4



Gambar 18. Hasil Inkubasi kelompok perancah non-inkorporasi PRP (B) minggu ke-2 dan minggu ke-4



Gambar 20. Proses memisahkan larutan aquadest setelah inkubasi



Gambar 19. Perancah yang sudah di keringkan dalam oven setelah inkubasi pada minggu ke-6. kelompok perancah inkorporasi PRP (kanan) dan kelompok non-inkorporasi PRP (kiri)