

Lampiran

Lampiran 1. Hasil Olah Data Nilai Transversal Resin Akrilik Heat Cured Setelah Direndam Dengan Yoghurt dan Aquades Dengan Menggunakan SPSS

Case Processing Summary

	Spesimen	Cases					
		Valid		Missing		Total	
		N	Percent	N	Percent	N	Percent
Tegangan Bending	PH 4	5	100.0%	0	.0%	5	100.0%
	PH 4.5	5	100.0%	0	.0%	5	100.0%
	PH 5	5	100.0%	0	.0%	5	100.0%
	Aquades	5	100.0%	0	.0%	5	100.0%

Descriptives

	Spesimen		Statistic	Std. Error
Tegangan Bending	PH 4	Mean	78.4960	2.70465
		95% Confidence Interval for Mean	70.9867	
		Lower Bound	86.0053	
		Upper Bound		
		5% Trimmed Mean	78.5544	
		Median	77.2200	
		Variance	36.576	
		Std. Deviation	6.04778	
		Minimum	70.01	
		Maximum	85.93	
	PH 4.5	Range	15.92	
		Interquartile Range	10.67	
		Skewness	-.279	.913
		Kurtosis	-.082	2.000
		Mean	80.9060	6.35401
		95% Confidence Interval for Mean	63.2644	
		Lower Bound	98.5476	
		Upper Bound		
		5% Trimmed Mean	81.3861	
		Median	84.2600	
Variance	201.867			
Std. Deviation	14.20800			
Minimum	58.52			
Maximum	94.65			
PH 5	Range	36.13		
	Interquartile Range	24.86		
	Skewness	-1.135	.913	
	Kurtosis	1.054	2.000	
	Mean	84.5420	4.02972	
	95% Confidence Interval for Mean	73.3537		
	Lower Bound	95.7303		
	Upper Bound			
	5% Trimmed Mean	84.2267		
	Median	84.9100		
Variance	81.193			
Std. Deviation	9.01073			

	Minimum		76.37	
	Maximum		98.39	
	Range		22.02	
	Interquartile Range		15.90	
	Skewness		.923	.913
	Kurtosis		.564	2.000
Aquades	Mean		84.5560	4.40039
	95% Confidence Interval for Mean	Lower Bound	72.3386	
		Upper Bound	96.7734	
	5% Trimmed Mean		84.2872	
	Median		83.3700	
	Variance		96.817	
	Std. Deviation		9.83957	
	Minimum		75.49	
	Maximum		98.46	
	Range		22.97	
	Interquartile Range		18.69	
	Skewness		.595	.913
	Kurtosis		-1.119	2.000

Tests of Normality

	Spesimen	Kolmogorov-Smirnov(a)			Shapiro-Wilk		
		Statistic	df	Sig.	Statistic	df	Sig.
Tegangan Bending	PH 4	.199	5	.200(*)	.966	5	.850
	PH 4.5	.193	5	.200(*)	.922	5	.545
	PH 5	.218	5	.200(*)	.889	5	.354
	Aquades	.221	5	.200(*)	.907	5	.450

* This is a lower bound of the true significance.

a. Lilliefors Significance Correction

Test of Homogeneity of Variance

		Levene Statistic	df1	df2	Sig.
Tegangan Bending	Based on Mean	1.054	3	16	.396
	Based on Median	.666	3	16	.585
	Based on Median and with adjusted df	.666	3	10.662	.591
	Based on trimmed mean	.986	3	16	.424

Descriptives

Tegangan Bending

	N	Mean	Std. Deviation	Std. Error	95% Confidence Interval for Mean		Minimum	Maximum
					Lower Bound	Upper Bound		
PH 4	5	78.4960	6.04778	2.70465	70.9867	86.0053	70.01	85.93
PH 4.5	5	80.9060	14.20800	6.35401	63.2644	98.5476	58.52	94.65
PH 5	5	84.5420	9.01073	4.02972	73.3537	95.7303	76.37	98.39
Aquades	5	84.5560	9.83957	4.40039	72.3386	96.7734	75.49	98.46
Total	20	82.1250	9.72747	2.17513	77.5724	86.6776	58.52	98.46

Test of Homogeneity of Variances

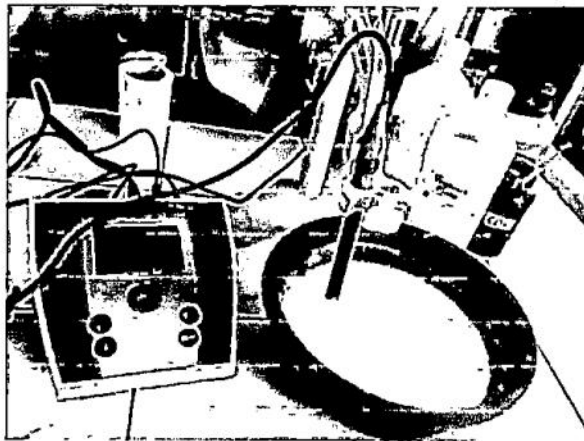
Tegangan Bending

Levene Statistic	df1	df2	Sig.
1.054	3	16	.396

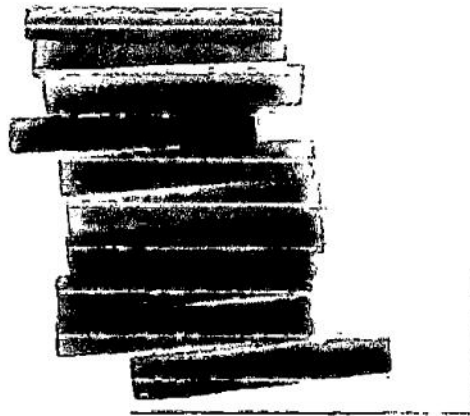
ANOVA

Tegangan Bending

	Sum of Squares	df	Mean Square	F	Sig.
Between Groups	132.036	3	44.012	.423	.739
Within Groups	1665.814	16	104.113		
Total	1797.850	19			

Lampiran 2. Foto Alat dan Bahan Penelitian

Pengukuran ph pada yoghurt menggunakan alat pengukur ph



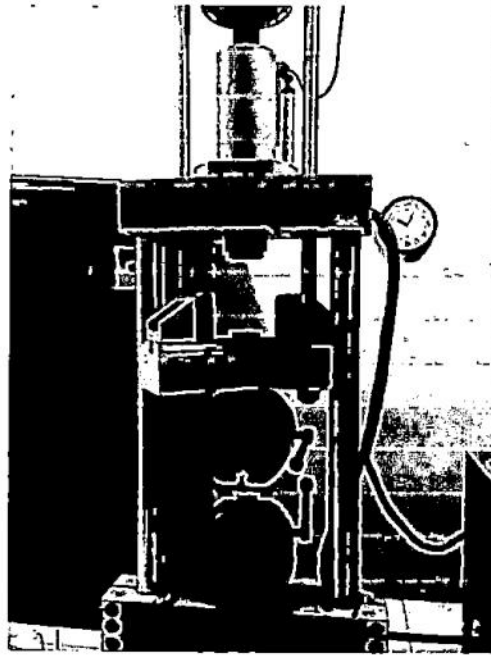
Spesimen lempeng resin akrilik *heat cured*



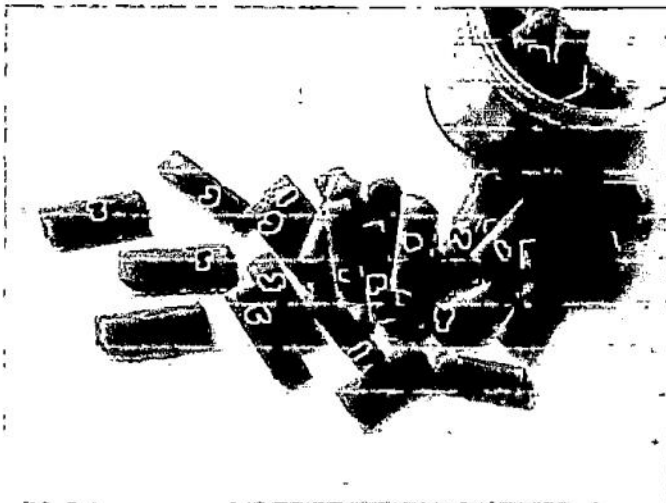
Perendaman resin akrilik *heat cured* pada Aquades



Perendaman resin akrilik *heat cured* pada yoghurt



Alat uji kekuatan transversal



Lempeng resin akrilik heat cured setelah pengujian kekuatan transversal