

# LAMPIRAN

## Lampiran 1

**Data Penelitian**

No	Kode Perusahaan	Tahun	PBV	ROA	PPEMVA	DER	DPR
1	AAI	2012	3.1569	0.202923	0.354415	0.3261	0.4475
2	AAI	2013	3.8495	0.127185	0.327998	0.4573	0.5898
3	AAI	2014	3.2260	0.141245	0.395974	0.5678	0.6036
4	AAI	2015	2.1335	0.032339	0.598322	0.8389	
5	AAI	2016	1.8351	0.087274	0.576808	0.3770	0.0949
6	AKRA	2012	3.7968	0.052499	0.237415	1.8001	0.6228
7	AKRA	2013	3.1657	0.042071	0.351558	1.7285	0.6885
8	AKRA	2014	2.7049	0.053446	0.43003	1.4814	0.6280
9	AKRA	2015	3.8877	0.069631	0.252313	1.0863	0.4574
10	AKRA	2016	2.9663	0.066128	0.325952	0.9606	0.2764
11	ASII	2012	3.4257	0.124768	0.307769	1.0295	0.4503
12	ASII	2013	2.5925	0.104195	0.402757	1.0152	0.4503
13	ASII	2014	2.5000	0.093774	0.404898	0.9623	0.4559
14	ASII	2015	1.9197	0.063614	0.491222	0.9397	0.4954
15	ASII	2016	2.3945	0.069894	0.411698	0.8716	0.1469
16	BKSL	2012	1.2320	0.035898	0.61514	0.2778	
17	BKSL	2013	0.7165	0.056733	0.551559	0.5503	
18	BKSL	2014	0.5257	0.004158	0.622835	0.5773	0.0130
19	BKSL	2015	0.3058	0.005533	2.062803	0.7017	
20	BKSL	2016	0.4438	0.049512	1.621145	0.5865	
21	BMTR	2012	2.3450	0.099697	0.250793	0.3987	0.2581
22	BMTR	2013	1.9996	0.048869	0.368321	0.5779	0.5663
23	BMTR	2014	1.2746	0.050857	0.539988	0.5979	0.5035
24	BMTR	2015	1.0212	0.010699	0.815382	0.7321	

25	BMTR	2016	0.6277	0.031941	1.316411	0.7700	
26	BSDE	2012	1.8275	0.088255	0.368564	0.5911	0.1775
27	BSDE	2013	1.6825	0.128727	0.393542	0.6826	0.0903
28	BSDE	2014	1.7951	0.142047	0.440375	0.5230	0.0690
29	BSDE	2015	1.5678	0.065276	0.453352	0.6302	0.0409
30	BSDE	2016	1.3870	0.05321	0.520764	0.5724	
31	ICBP	2012	1.8971	0.128559	0.315511	0.4811	
32	ICBP	2013	4.4834	0.105092	0.15842	0.6032	0.4979
33	ICBP	2014	5.0788	0.101632	0.14129	0.6563	0.4971
34	ICBP	2015	4.7948	0.110056	0.152267	0.6208	0.4975
35	ICBP	2016	2.7026	0.125642	0.247175	0.5622	
36	INDF	2012	1.5044	0.080565	0.52187	0.7375	0.4981
37	INDF	2013	1.5102	0.043751	0.583488	1.0351	0.4980
38	INDF	2014	1.4376	0.059884	0.552829	1.0845	0.4972
39	INDF	2015	1.0537	0.040395	0.709936	1.1296	0.4970
40	INDF	2016	1.5496	0.039287	0.5514	1.0583	
41	INTP	2012	4.2559	0.209332	0.097841	0.1718	0.3480
42	INTP	2013	3.2042	0.188381	0.130994	0.1580	0.6613
43	INTP	2014	3.7132	0.182587	0.137807	0.1654	0.9429
44	INTP	2015	3.4435	0.157631	0.17419	0.1581	0.3507
45	INTP	2016	2.1689	0.128366	0.273423	0.1535	
46	JSMR	2012	3.7864	0.062044	0.445648	1.5290	0.4000
47	JSMR	2013	2.9567	0.043637	0.550666	1.6103	0.4000
48	JSMR	2014	4.1961	0.038148	0.440471	1.7884	
49	JSMR	2015	2.8726	0.035921	0.632803	1.9692	0.2024
50	JSMR	2016	1.7979	0.033702	0.846045	2.2744	
51	KLBF	2012	7.3019	0.18848	0.055134	0.2776	0.6678

52	KLBF	2013	6.8934	0.174144	0.064962	0.3312	0.4497
53	KLBF	2014	8.7376	0.170711	0.050047	0.2656	0.4313
54	KLBF	2015	5.6568	0.150236	0.079463	0.2522	0.4443
55	KLBF	2016	5.6977	0.154399	0.079113	0.2216	
56	LPKR	2012	2.0120	0.053192	0.16334	1.1682	0.2067
57	LPKR	2013	1.4813	0.050878	0.218955	1.2077	0.2036
58	LPKR	2014	1.3339	0.083027	0.205611	1.1399	
59	LPKR	2015	1.2627	0.024781	0.187016	1.1847	0.0789
60	LPKR	2016	0.7213	0.026914	0.250117	1.0658	
61	LPPF	2012	-4.0788	0.263122	0.112166	-2.5168	
62	LPPF	2013	-41.0779	0.391626	0.036369	-4.7586	0.4001
63	LPPF	2014	246.4597	0.416362	0.029021	18.1924	
64	LPPF	2015	46.4264	0.457885	0.031264	2.5160	0.7001
65	LPPF	2016	23.7885	0.415673	0.042309	1.6190	
66	LSIP	2012	2.4989	0.147718	0.306574	0.2026	0.4034
67	LSIP	2013	1.9910	0.096381	0.435405	0.2058	0.4079
68	LSIP	2014	1.7863	0.105913	0.499994	0.1990	0.3945
69	LSIP	2015	1.2273	0.07044	0.762152	0.2059	0.4050
70	LSIP	2016	1.5527	0.062667	0.584259	0.2371	
71	MAPI	2012	5.0808	0.072238	0.224079	1.7572	0.1649
72	MAPI	2013	3.7605	0.04198	0.318061	2.2161	0.1013
73	MAPI	2014	3.2285	0.008434	0.330613	2.3288	
74	MAPI	2015	2.1176	0.003174	0.397883	2.1876	
75	MAPI	2016	2.7982	0.019514	0.331673	2.3349	
76	MNCN	2012	4.7814	0.196745	0.06215	0.2280	0.4632
77	MNCN	2013	4.7303	0.188226	0.075986	0.2417	0.5002
78	MNCN	2014	3.8141	0.138396	0.126151	0.4488	0.5105

79	MNCN	2015	2.7127	0.088222	0.22629	0.5131	
80	MNCN	2016	2.4934	0.104144	0.314005	0.5010	
81	MPPA	2012	1.6676	0.029115	0.388837	1.1388	4.7029
82	MPPA	2013	1.5857	0.045104	0.225791	0.4992	2.2483
83	MPPA	2014	2.8148	0.062914	0.115636	0.5111	0.3488
84	MPPA	2015	3.5361	0.029058	0.220847	1.2677	0.9697
85	MPPA	2016	3.2758	0.005742	0.292135	1.7583	
86	PTPP	2012	2.3103	0.036217	0.077195	4.1640	0.3001
87	PTPP	2013	2.8302	0.033886	0.070692	5.2555	0.3000
88	PTPP	2014	7.2426	0.036413	0.054161	5.1131	0.1999
89	PTPP	2015	3.6656	0.044204	0.170744	2.7368	
90	PTPP	2016	1.7089	0.036866	0.29941	1.8930	
91	PWON	2012	3.4569	0.10131	0.366562	1.4137	0.2198
92	PWON	2013	3.1695	0.122232	0.364059	1.2665	0.1907
93	PWON	2014	2.9943	0.154981	0.383424	1.0247	0.0834
94	PWON	2015	2.5264	0.074584	0.464438	0.9860	0.1547
95	PWON	2016	2.4692	0.08611	0.45113	0.8761	
96	SMGR	2012	5.1756	0.185358	0.187983	0.4632	0.4500
97	SMGR	2013	3.8493	0.173881	0.23762	0.4123	0.4500
98	SMGR	2014	3.8432	0.162426	0.226368	0.3725	0.3999
99	SMGR	2015	2.4642	0.118613	0.384964	0.3904	0.4000
100	SMGR	2016	1.7800	0.10254	0.564958	0.4465	
101	SMRA	2012	1.7961	0.072826	0.550393	1.8507	0.3916
102	SMRA	2013	2.4160	0.080231	0.473516	1.9326	0.3028
103	SMRA	2014	3.6593	0.090219	0.362837	1.5664	
104	SMRA	2015	3.1614	0.056726	0.374509	1.4912	0.0678
105	SMRA	2016	2.3410	0.029075	0.439733	1.5485	

106	TLKM	2012	0.5448	0.164875	1.468746	0.6628	0.6842
107	TLKM	2013	2.7991	0.158576	0.397287	0.6526	0.7267
108	TLKM	2014	3.3532	0.152213	0.343622	0.6359	
109	TLKM	2015	3.3500	0.140318	0.337584	0.7786	0.6159
110	TLKM	2016	3.8011	0.162418	0.302901	0.7018	0.1127
111	UNTR	2012	2.2750	0.114379	0.352467	0.5573	0.5357
112	UNTR	2013	1.9881	0.083657	0.378699	0.6091	0.5325
113	UNTR	2014	1.6776	0.080275	0.380867	0.5629	0.6495
114	UNTR	2015	1.6108	0.045247	0.333118	0.5724	0.6689
115	UNTR	2016	1.8597	0.079768	0.264879	0.5014	0.1066
116	UNVR	2012	40.0884	0.403767	0.043549	2.0201	0.9996
117	UNVR	2013	46.6264	0.401	0.037604	2.1373	0.9993
118	UNVR	2014	51.9221	0.397793	0.032144	2.0398	0.4467
119	UNVR	2015	58.4812	0.372017	0.03217	2.2585	0.9988
120	UNVR	2016	62.9311	0.381631	0.034177	2.5597	0.4477
121	WIKA	2012	2.9725	0.04615	0.377061	2.8895	0.2698
122	WIKA	2013	3.0063	0.049573	0.390859	2.9030	0.2736
123	WIKA	2014	4.5451	0.047175	0.255115	2.1966	0.1640
124	WIKA	2015	0.8282	0.020819	0.35565	0.7226	0.1780
125	WIKA	2016	1.6937	0.03689	0.379323	1.4880	
126	WSKT	2012	2.0636	0.030364	0.110675	3.1684	0.0800
127	WSKT	2013	1.6367	0.04187	0.206381	2.6872	0.3000
128	WSKT	2014	5.0194	0.039963	0.124066	3.4025	0.1988
129	WSKT	2015	2.3357	0.034564	0.413234	2.1233	0.2001
130	WSKT	2016	2.0636	0.029517	0.513411	2.6621	

## Lampiran 2

**Data setelah outlier Z-Score**

No	Kode Perusahaan	Tahun	PBV	ROA	PPEMVA	DER	DPR
1	AALI	2012	3.1569	0.202923	0.354415	0.3261	0.4475
2	AALI	2013	3.8495	0.127185	0.327998	0.4573	0.5898
3	AALI	2014	3.2260	0.141245	0.395974	0.5678	0.6036
4	AALI	2015	2.1335	0.032339	0.598322	0.8389	
5	AALI	2016	1.8351	0.087274	0.576808	0.3770	0.0949
6	AKRA	2012	3.7968	0.052499	0.237415	1.8001	0.6228
7	AKRA	2013	3.1657	0.042071	0.351558	1.7285	0.6885
8	AKRA	2014	2.7049	0.053446	0.43003	1.4814	0.6280
9	AKRA	2015	3.8877	0.069631	0.252313	1.0863	0.4574
10	AKRA	2016	2.9663	0.066128	0.325952	0.9606	0.2764
11	ASII	2012	3.4257	0.124768	0.307769	1.0295	0.4503
12	ASII	2013	2.5925	0.104195	0.402757	1.0152	0.4503
13	ASII	2014	2.5000	0.093774	0.404898	0.9623	0.4559
14	ASII	2015	1.9197	0.063614	0.491222	0.9397	0.4954
15	ASII	2016	2.3945	0.069894	0.411698	0.8716	0.1469
16	BKSL	2012	1.2320	0.035898	0.61514	0.2778	
17	BKSL	2013	0.7165	0.056733	0.551559	0.5503	
18	BKSL	2014	0.5257	0.004158	0.622835	0.5773	0.0130
19	BKSL	2015	0.3058	0.005533	2.062803	0.7017	
20	BKSL	2016	0.4438	0.049512	1.621145	0.5865	
21	BMTR	2012	2.3450	0.099697	0.250793	0.3987	0.2581
22	BMTR	2013	1.9996	0.048869	0.368321	0.5779	0.5663
23	BMTR	2014	1.2746	0.050857	0.539988	0.5979	0.5035
24	BMTR	2015	1.0212	0.010699	0.815382	0.7321	
25	BMTR	2016	0.6277	0.031941	1.316411	0.7700	

26	BSDE	2012	1.8275	0.088255	0.368564	0.5911	0.1775
27	BSDE	2013	1.6825	0.128727	0.393542	0.6826	0.0903
28	BSDE	2014	1.7951	0.142047	0.440375	0.5230	0.0690
29	BSDE	2015	1.5678	0.065276	0.453352	0.6302	0.0409
30	BSDE	2016	1.3870	0.05321	0.520764	0.5724	
31	ICBP	2012	1.8971	0.128559	0.315511	0.4811	
32	ICBP	2013	4.4834	0.105092	0.15842	0.6032	0.4979
33	ICBP	2014	5.0788	0.101632	0.14129	0.6563	0.4971
34	ICBP	2015	4.7948	0.110056	0.152267	0.6208	0.4975
35	ICBP	2016	2.7026	0.125642	0.247175	0.5622	
36	INDF	2012	1.5044	0.080565	0.52187	0.7375	0.4981
37	INDF	2013	1.5102	0.043751	0.583488	1.0351	0.4980
38	INDF	2014	1.4376	0.059884	0.552829	1.0845	0.4972
39	INDF	2015	1.0537	0.040395	0.709936	1.1296	0.4970
40	INDF	2016	1.5496	0.039287	0.5514	1.0583	
41	INTP	2012	4.2559	0.209332	0.097841	0.1718	0.3480
42	INTP	2013	3.2042	0.188381	0.130994	0.1580	0.6613
43	INTP	2014	3.7132	0.182587	0.137807	0.1654	0.9429
44	INTP	2015	3.4435	0.157631	0.17419	0.1581	0.3507
45	INTP	2016	2.1689	0.128366	0.273423	0.1535	
46	JSMR	2012	3.7864	0.062044	0.445648	1.5290	0.4000
47	JSMR	2013	2.9567	0.043637	0.550666	1.6103	0.4000
48	JSMR	2014	4.1961	0.038148	0.440471	1.7884	
49	JSMR	2015	2.8726	0.035921	0.632803	1.9692	0.2024
50	JSMR	2016	1.7979	0.033702	0.846045	2.2744	
51	KLBF	2012	7.3019	0.18848	0.055134	0.2776	0.6678
52	KLBF	2013	6.8934	0.174144	0.064962	0.3312	0.4497



53	KLBF	2014	8.7376	0.170711	0.050047	0.2656	0.4313
54	KLBF	2015	5.6568	0.150236	0.079463	0.2522	0.4443
55	KLBF	2016	5.6977	0.154399	0.079113	0.2216	
56	LPKR	2012	2.0120	0.053192	0.16334	1.1682	0.2067
57	LPKR	2013	1.4813	0.050878	0.218955	1.2077	0.2036
58	LPKR	2014	1.3339	0.083027	0.205611	1.1399	
59	LPKR	2015	1.2627	0.024781	0.187016	1.1847	0.0789
60	LPKR	2016	0.7213	0.026914	0.250117	1.0658	
61	LPPF	2012	-4.0788	0.263122	0.112166	-2.5168	
62	LPPF	2013	-41.0779	0.391626	0.036369	-4.7586	0.4001
63	LPPF	2014	246.4597	0.416362	0.029021	18.1924	
64	LPPF	2015	46.4264	0.457885	0.031264	2.5160	0.7001
65	LPPF	2016	23.7885	0.415673	0.042309	1.6190	
66	LSIP	2012	2.4989	0.147718	0.306574	0.2026	0.4034
67	LSIP	2013	1.9910	0.096381	0.435405	0.2058	0.4079
68	LSIP	2014	1.7863	0.105913	0.499994	0.1990	0.3945
69	LSIP	2015	1.2273	0.07044	0.762152	0.2059	0.4050
70	LSIP	2016	1.5527	0.062667	0.584259	0.2371	
71	MAPI	2012	5.0808	0.072238	0.224079	1.7572	0.1649
72	MAPI	2013	3.7605	0.04198	0.318061	2.2161	0.1013
73	MAPI	2014	3.2285	0.008434	0.330613	2.3288	
74	MAPI	2015	2.1176	0.003174	0.397883	2.1876	
75	MAPI	2016	2.7982	0.019514	0.331673	2.3349	
76	MNCN	2012	4.7814	0.196745	0.06215	0.2280	0.4632
77	MNCN	2013	4.7303	0.188226	0.075986	0.2417	0.5002
78	MNCN	2014	3.8141	0.138396	0.126151	0.4488	0.5105
79	MNCN	2015	2.7127	0.088222	0.22629	0.5131	

80	MNCN	2016	2.4934	0.104144	0.314005	0.5010	
81	MPPA	2012	1.6676	0.029115	0.388837	1.1388	4.7029
82	MPPA	2013	1.5857	0.045104	0.225791	0.4992	2.2483
83	MPPA	2014	2.8148	0.062914	0.115636	0.5111	0.3488
84	MPPA	2015	3.5361	0.029058	0.220847	1.2677	0.9697
85	MPPA	2016	3.2758	0.005742	0.292135	1.7583	
86	PTPP	2012	2.3103	0.036217	0.077195	4.1640	0.3001
87	PTPP	2013	2.8302	0.033886	0.070692	5.2555	0.3000
88	PTPP	2014	7.2426	0.036413	0.054161	5.1131	0.1999
89	PTPP	2015	3.6656	0.044204	0.170744	2.7368	
90	PTPP	2016	1.7089	0.036866	0.29941	1.8930	
91	PWON	2012	3.4569	0.10131	0.366562	1.4137	0.2198
92	PWON	2013	3.1695	0.122232	0.364059	1.2665	0.1907
93	PWON	2014	2.9943	0.154981	0.383424	1.0247	0.0834
94	PWON	2015	2.5264	0.074584	0.464438	0.9860	0.1547
95	PWON	2016	2.4692	0.08611	0.45113	0.8761	
96	SMGR	2012	5.1756	0.185358	0.187983	0.4632	0.4500
97	SMGR	2013	3.8493	0.173881	0.23762	0.4123	0.4500
98	SMGR	2014	3.8432	0.162426	0.226368	0.3725	0.3999
99	SMGR	2015	2.4642	0.118613	0.384964	0.3904	0.4000
100	SMGR	2016	1.7800	0.10254	0.564958	0.4465	
101	SMRA	2012	1.7961	0.072826	0.550393	1.8507	0.3916
102	SMRA	2013	2.4160	0.080231	0.473516	1.9326	0.3028
103	SMRA	2014	3.6593	0.090219	0.362837	1.5664	
104	SMRA	2015	3.1614	0.056726	0.374509	1.4912	0.0678
105	SMRA	2016	2.3410	0.029075	0.439733	1.5485	
106	TLKM	2012		0.164875	1.468746	0.6628	0.6842

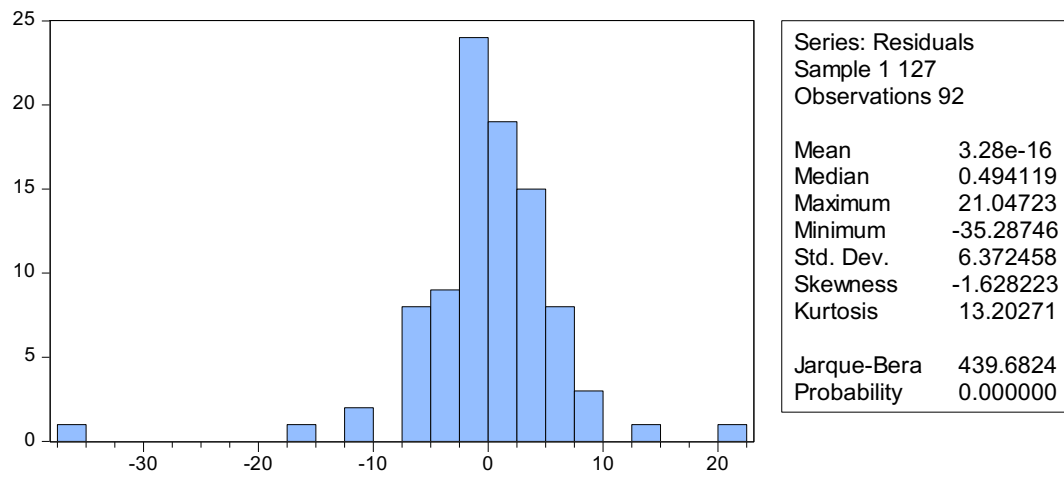
107	TLKM	2013	2.7991	0.158576	0.397287	0.6526	0.7267
108	TLKM	2014	3.3532	0.152213	0.343622	0.6359	
109	TLKM	2015	3.3500	0.140318	0.337584	0.7786	0.6159
110	TLKM	2016	3.8011	0.162418	0.302901	0.7018	0.1127
111	UNTR	2012	2.2750	0.114379	0.352467	0.5573	0.5357
112	UNTR	2013	1.9881	0.083657	0.378699	0.6091	0.5325
113	UNTR	2014	1.6776	0.080275	0.380867	0.5629	0.6495
114	UNTR	2015	1.6108	0.045247	0.333118	0.5724	0.6689
115	UNTR	2016	1.8597	0.079768	0.264879	0.5014	0.1066
116	UNVR	2012	40.0884	0.403767	0.043549	2.0201	0.9996
117	UNVR	2013	46.6264	0.401	0.037604	2.1373	0.9993
118	UNVR	2014	51.9221	0.397793	0.032144	2.0398	0.4467
119	UNVR	2015	58.4812	0.372017	0.03217	2.2585	0.9988
120	UNVR	2016		0.381631	0.034177	2.5597	0.4477
121	WIKA	2012	2.9725	0.04615	0.377061	2.8895	0.2698
122	WIKA	2013	3.0063	0.049573	0.390859	2.9030	0.2736
123	WIKA	2014	4.5451	0.047175	0.255115	2.1966	0.1640
124	WIKA	2015	0.8282	0.020819	0.35565	0.7226	0.1780
125	WIKA	2016	1.6937	0.03689	0.379323	1.4880	
126	WSKT	2012	2.0636	0.030364	0.110675	3.1684	0.0800
127	WSKT	2013	1.6367	0.04187	0.206381	2.6872	0.3000
128	WSKT	2014	5.0194	0.039963	0.124066	3.4025	0.1988
129	WSKT	2015	2.3357	0.034564	0.413234	2.1233	0.2001
130	WSKT	2016	2.0636	0.029517	0.513411	2.6621	

## Lampiran 3

**Statistik Deskriptif**

	PBV	ROA	PPEMVA	DER	DPR
Mean	5.028551	0.112967	0.300968	1.097808	0.468318
Median	2.914622	0.082111	0.326975	0.758080	0.406432
Maximum	58.48124	0.457885	0.762152	5.255542	4.702908
Minimum	-41.07787	0.004158	0.031264	-4.758622	0.012974
Std. Dev.	11.67200	0.092982	0.174438	1.197996	0.536510
Skewness	2.378881	1.971607	0.227170	-0.001656	5.812596
Kurtosis	14.94408	6.948498	2.419153	10.37904	44.56371
Jarque-Bera	633.6402	119.3684	2.084597	208.7260	7140.301
Probability	0.000000	0.000000	0.352643	0.000000	0.000000
Sum	462.6267	10.39298	27.68903	100.9983	43.08525
Sum Sq. Dev.	12397.43	0.786757	2.769004	130.6026	26.19371
Observations	92	92	92	92	92

## Lampiran 4

**Uji Normalitas Jarque-Bera**

## Lampiran 5

## Uji Heterokedastisitas Harvey

## Heteroskedasticity Test: Harvey

F-statistic	2.179024	Prob. F(4,87)	0.0780
Obs*R-squared	8.377701	Prob. Chi-Square(4)	0.0787
Scaled explained SS	10.44842	Prob. Chi-Square(4)	0.0335

Test Equation:

Dependent Variable: LRESID2

Method: Least Squares

Date: 02/02/18 Time: 14:29

Sample: 1 127

Included observations: 92

Variable	Coefficient	Std. Error	t-Statistic	Prob.
C	3.301349	1.001250	3.297227	0.0014
ROA	-1.975724	3.433899	-0.575359	0.5665
PPEMVA	-4.724680	1.777045	-2.658729	0.0093
DER	0.001646	0.229573	0.007171	0.9943
DPR	0.109712	0.478355	0.229353	0.8191

R-squared	0.091062	Mean dependent var	1.709368
Adjusted R-squared	0.049272	S.D. dependent var	2.494428
S.E. of regression	2.432199	Akaike info criterion	4.668284
Sum squared resid	514.6565	Schwarz criterion	4.805338
Log likelihood	-209.7411	Hannan-Quinn criter.	4.723600
F-statistic	2.179024	Durbin-Watson stat	1.756089
Prob(F-statistic)	0.077952		

## Lampiran 6

**Uji Multikolinearitas**

Variance Inflation Factors

Date: 02/02/18 Time: 14:28

Sample: 1 130

Included observations: 92

Variable	Coefficient Variance	Uncentered VIF	Centered VIF
C	7.198184	15.59103	NA
ROA	84.66676	3.908544	1.568258
PPEMVA	22.67434	5.926792	1.478162
DER	0.378424	2.151406	1.163575
DPR	1.643001	1.793706	1.013209

## Lampiran 7

**Uji Autokorelasi Durbin-Watson, Hasil Regresi Uji t dan Uji  $R^2$** 

Dependent Variable: PBV

Method: Least Squares

Date: 02/02/18 Time: 14:28

Sample (adjusted): 1 127

Included observations: 92 after adjustments

Variable	Coefficient	Std. Error	t-Statistic	Prob.
C	-17.62290	2.682943	-6.568494	0.0000
ROA	102.4335	9.201454	11.13232	0.0000
PPEMVA	10.10943	4.761758	2.123046	0.0366
DER	6.234908	0.615162	10.13540	0.0000
DPR	2.546301	1.281796	1.986510	0.0501
R-squared	0.701926	Mean dependent var	5.028551	
Adjusted R-squared	0.688222	S.D. dependent var	11.67200	
S.E. of regression	6.517305	Akaike info criterion	6.639614	
Sum squared resid	3695.348	Schwarz criterion	6.776668	
Log likelihood	-300.4222	Hannan-Quinn criter.	6.694930	
F-statistic	51.21856	Durbin-Watson stat	2.058442	
Prob(F-statistic)	0.000000			