

LAMPIRAN

Lampiran 1

Daftar Sampel

No.	Nama Perusahaan	Kode Saham
1	Alkindo Naratama Tbk	ALDO
2	Asahimas Flat Glass Tbk	AMFG
3	Astra International Tbk	ASII
4	Citra Tubindo Tbk	CTBN
5	Duta Pertiwi Nusantara Tbk	DPNS
6	Indal Aluminium Industry Tbk	INAI
7	Intanwijaya Internasional Tbk	INCI
8	Indofood Sukses Makmur Tbk	INDF
9	Indospring Tbk	INDS
10	Kedawung Setia Industrial Tbk	KDSI
11	Lion Metal Works Tbk	LION
12	Pan Brothers Tbk	PBRX
13	Pelangi Indah Canindo Tbk	PICO
14	Pyridam Farma Tbk	PYFA
15	Supreme Cable Manufacturing Corporation Tbk	SCCO
16	PT Industri Jamu dan Farmasi Sido Muncul Tbk	SIDO
17	Sekar Bumi Tbk	SKBM
18	Selamat Sempurna Tbk	SMSM
19	Indo Acidatama Tbk	SRSN
20	Mandom Indonesia Tbk	TCID

21	Trias Sentosa Tbk	TRST
22	Ultra Jaya Milk Industry Tbk	ULTJ
23	Unilever indonesia Tbk	UNVR
24	Wismilak Inti Makmur Tbk	WIIM

Lampiran 2

Data Penelitian

No.	Kode Saham	Tahun	PBV	DER	ROA	KM
1	ALDO	2013	2.60	1.16	0.0749	0.1432
2	ALDO	2014	2.60	1.24	0.059	0.1432
3	ALDO	2015	2.37	1.14	0.0658	0.1432
4	ALDO	2016	1.67	1	0.068	0.1432
5	AMFG	2013	1.10	0.28	0.0956	0.00004
6	AMFG	2014	1.14	0.23	0.117	0.00004
7	AMFG	2015	0.84	0.26	0.0799	0.00005
8	AMFG	2016	0.83	0.46	0.0423	0.00005
9	ASII	2013	2.59	1.02	0.1042	0.0004
10	ASII	2014	2.60	0.96	0.0937	0.0004
11	ASII	2015	1.92	0.94	0.0636	0.0004
12	ASII	2016	2.54	0.93	0.0699	0.0004
13	CTBN	2013	1.95	0.82	0.1396	0.00035
14	CTBN	2014	2.55	0.78	0.098	0.00035
15	CTBN	2015	2.26	0.72	0.0353	0.00035
16	CTBN	2016	2.43	0.32	0.0277	0.00002
17	DPNS	2013	0.70	0.15	0,7484	0.0571
18	DPNS	2014	0.50	0.14	0.054	0.00003
19	DPNS	2015	0.53	0.14	0.0359	0.00003
20	DPNS	2016	0.51	0.16	0.0257	0.00003
21	INAI	2013	0.75	5.06	0.0066	0.0019
22	INAI	2014	0.75	5.15	0.0246	0.0022
23	INAI	2015	0.53	4.55	0.0215	0.005
24	INAI	2016	0.82	4.1	0.0208	0.0071
25	INCI	2013	0.34	0.08	0.0759	0.0838
26	INCI	2014	0.32	0.08	0.0745	0.1388
27	INCI	2015	0.36	0.1	0.1	0.1392
28	INCI	2016	0.25	0.08	0.0265	0.3358
29	INDF	2013	1.51	1.04	0.0438	0.00015
30	INDF	2014	1.45	1.08	0.0599	0.00015
31	INDF	2015	1.05	1.13	0.0404	0.00015
32	INDF	2016	1.55	1.06	0.0444	0.00015
33	INDS	2013	0.80	0.25	0.0672	0.0044
34	INDS	2014	0.58	0.25	0.0559	0.0044
35	INDS	2015	0.12	0.33	0.0008	0.0044

36	INDS	2016	0.26	0.2	0.0187	0.0044
37	KDSI	2013	0.40	1.42	0.0423	0.0247
38	KDSI	2014	0.39	1.4	0.0467	0.0484
39	KDSI	2015	0.20	2.11	0.0097	0.0481
40	KDSI	2016	0.35	1.83	0.0255	0.0481
41	LION	2013	1.50	0.2	0.1299	0.0024
42	LION	2014	1.14	0.35	0.0817	0.0024
43	LION	2015	1.20	0.41	0.072	0.0024
44	LION	2016	1.16	0.39	0.0538	0.0024
45	PBRX	2013	1.07	1.46	0.0447	0.00418
46	PBRX	2014	1.43	0.79	0.0276	0.002
47	PBRX	2015	1.22	1.05	0.0195	0.002
48	PBRX	2016	1.01	1.17	0.0225	0.0417
49	PICO	2013	0.41	1.89	0.0248	0.0004
50	PICO	2014	0.40	1.71	0.0258	0.0004
51	PICO	2015	0.29	1.45	0.0247	0.0004
52	PICO	2016	0.49	1.34	0.0207	0.0004
53	PYFA	2013	0.84	0.86	0.0354	0.2308
54	PYFA	2014	0.77	0.79	0.0154	0.1154
55	PYFA	2015	0.59	0.58	0.0193	0.1154
56	PYFA	2016	1.03	0.54	0.0177	0.2308
57	SCCO	2013	1.28	1.49	0.0596	0.05766
58	SCCO	2014	1.06	1.03	0.0831	0.05766
59	SCCO	2015	0.83	0.92	0.0897	0.05766
60	SCCO	2016	1.33	0.78	0.1246	0.04785
61	SIDO	2013	4.00	0.1	0.1377	0.324
62	SIDO	2014	3.61	0.07	0.1472	0.324
63	SIDO	2015	3.18	0.08	0.1565	0.324
64	SIDO	2016	3.05	0.09	0.1267	0.324
65	SKBM	2013	2.07	1.47	0.1171	0.0172
66	SKBM	2014	3.08	1.04	0.1372	0.0311
67	SKBM	2015	2.57	1.22	0.0525	0.0311
68	SKBM	2016	1.65	1.37	0.0236	0.0408
69	SMSM	2013	4.93	0.69	0.1988	0.083276
70	SMSM	2014	5.97	0.53	0.2409	0.083276
71	SMSM	2015	4.76	0.54	0.2078	0.083276
72	SMSM	2016	3.62	0.38	0.0625	0.079963
73	SRSN	2013	0.96	0.34	0.1269	0.094203
74	SRSN	2014	0.91	0.41	0.0312	0.11594

75	SRSN	2015	0.89	0.69	0.027	0.11594
76	SRSN	2016	0.85	0.63	0.0226	0.11594
77	TCID	2013	2.02	0.24	0.1092	0.00141
78	TCID	2014	2.80	0.44	0.0941	0.00135
79	TCID	2015	1.93	0.21	0.2615	0.00135
80	TCID	2016	1.44	0.25	0.0662	0.00142
81	TRST	2013	0.41	0.91	0.0101	0.015
82	TRST	2014	0.62	0.85	0.0092	0.0119
83	TRST	2015	0.44	0.72	0.0075	0.0286
84	TRST	2016	0.45	0.76	0.0085	0.0714
85	ULTJ	2013	6.45	0.4	0.1156	0.178
86	ULTJ	2014	4.91	0.29	0.0971	0.179
87	ULTJ	2015	4.07	0.27	0.1478	0.179
88	ULTJ	2016	3.95	0.19	0.1392	0.1149
89	UNVR	2013	46.63	2.14	0.7151	0.00001
90	UNVR	2014	45.03	2.11	0.4018	0.00001
91	UNVR	2015	58.48	2.26	0.372	0.00001
92	UNVR	2016	46.67	2.56	0.3816	0.000001
93	WIIM	2013	1.80	0.6	0.109	0.248
94	WIIM	2014	1.60	0.58	0.088	0.248
95	WIIM	2015	0.96	0.42	0.098	0.248
96	WIIM	2016	0.96	0.37	0.079	0.248

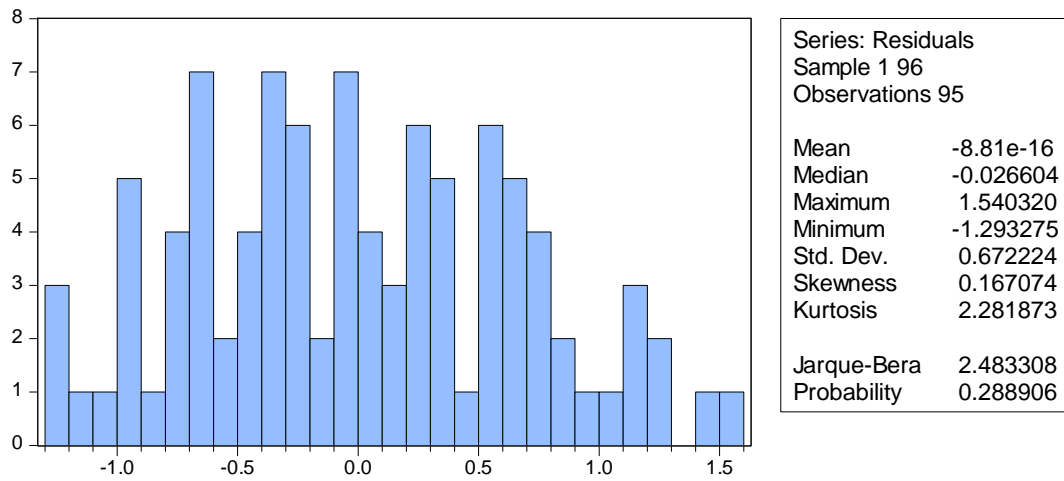
Lampiran 3

Statistik Deskriptif

	PBV	DER	ROA	MOWN
Mean	3.611368	0.941263	0.087105	0.067523
Median	1.160000	0.720000	0.063600	0.015000
Maximum	58.48000	5.150000	0.715100	0.335800
Minimum	0.120000	0.070000	0.000800	1.00E-06
Std. Dev.	9.763066	0.980386	0.100112	0.093612
Skewness	4.531380	2.538689	3.524730	1.462711
Kurtosis	22.33379	10.45985	19.49170	4.164671
Jarque-Bera	1804.719	322.3236	1273.281	39.24508
Probability	0.000000	0.000000	0.000000	0.000000
Sum	343.0800	89.42000	8.275000	6.414725
Sum Sq. Dev.	8959.842	90.34865	0.942098	0.823745
Observations	95	95	95	95

Lampiran 4

Hasil Uji Normalitas



Lampiran 5

Hasil Uji Multikolonieritas

Variance Inflation Factors

Sample: 1 96

Included observations: 95

Variable	Coefficient Variance	Uncentered VIF	Centered VIF
C	0.074253	15.11205	NA
LOG(DER)	0.005535	1.392108	1.104556
LOG(ROA)	0.004997	9.624311	1.063992
LOG(MOWN)	0.000514	3.749979	1.074528

Lampiran 6

Hasil Uji Heteroskedastisitas

Heteroskedasticity Test: Glejser

F-statistic	0.074127	Prob. F(3,91)	0.9737
Obs*R-squared	0.231589	Prob. Chi-Square(3)	0.9723
Scaled explained SS	0.187668	Prob. Chi-Square(3)	0.9796

Test Equation:

Dependent Variable: ARESID

Method: Least Squares

Sample: 1 96

Included observations: 95

Variable	Coefficient	Std. Error	t-Statistic	Prob.
C	0.534663	0.150899	3.543193	0.0006
LOG(DER)	-0.015078	0.041199	-0.365991	0.7152
LOG(ROA)	0.002245	0.039147	0.057355	0.9544
LOG(MOWN)	-0.004099	0.012560	-0.326331	0.7449

Lampiran 7

Hasil Uji Autokorelasi

Breusch-Godfrey Serial Correlation LM Test:

F-statistic	16.77064	Prob. F(2,89)	0.0000
Obs*R-squared	26.00284	Prob. Chi-Square(2)	0.0000

Test Equation:

Dependent Variable: RESID

Method: Least Squares

Sample: 1 96

Included observations: 95

Presample and interior missing value lagged residuals set to zero.

Variable	Coefficient	Std. Error	t-Statistic	Prob.
C	-0.402894	0.251213	-1.603793	0.1123
LOG(DER)	-0.049187	0.065038	-0.756272	0.4515
LOG(ROA)	-0.113993	0.065728	-1.734319	0.0863
LOG(MOWN)	-0.010341	0.019695	-0.525044	0.6009
RESID(-1)	0.585549	0.108229	5.410269	0.0000
RESID(-2)	0.020977	0.110699	0.189494	0.8501
R-squared	0.273714	Mean dependent var	-8.81E-16	
Adjusted R-squared	0.232912	S.D. dependent var	0.672224	
S.E. of regression	0.588758	Akaike info criterion	1.839472	
Sum squared resid	30.85058	Schwarz criterion	2.000769	
Log likelihood	-81.37490	Hannan-Quinn criter.	1.904648	
F-statistic	6.708257	Durbin-Watson stat	1.825075	
Prob(F-statistic)	0.000024			

Lampiran 8

Hasil Uji-t

Dependent Variable: LOG(PBV)

Method: Least Squares

Sample: 1 96

Included observations: 95

Variable	Coefficient	Std. Error	t-Statistic	Prob.
C	3.017737	0.224565	13.43814	0.0000
LOG(DER)	0.319915	0.072332	4.422881	0.0000
LOG(ROA)	0.882035	0.070028	12.59546	0.0000
R-squared	0.638800	Mean dependent var	0.297216	
Adjusted R-squared	0.630948	S.D. dependent var	1.127280	

Lampiran 9

Hasil Uji MRA (DER*MOWN)

Dependent Variable: LOG(PBV)

Method: Least Squares

Date: 03/15/18 Time: 13:20

Sample: 1 96

Included observations: 96

Variable	Coefficient	Std. Error	t-Statistic	Prob.
C	-0.512472	0.232652	-2.202743	0.0301
LOG(DER)	-0.613942	0.179120	-3.427543	0.0009
LOG(MOWN)	-0.150505	0.036322	-4.143685	0.0001
LOG(DER)*LOG(M OWN)	-0.143821	0.029419	-4.888776	0.0000

Lampiran 10

Hasil Uji MRA (ROA*MOWN)

Dependent Variable: LOG(PBV)

Method: Least Squares

Sample: 1 96

Included observations: 95

Variable	Coefficient	Std. Error	t-Statistic	Prob.
C	1.209591	0.400669	3.018928	0.0033
LOG(ROA)	0.345134	0.140694	2.453081	0.0161
LOG(MOWN)	-0.248687	0.057411	-4.331672	0.0000
LOG(ROA)*LOG(M OWN)	-0.081555	0.021653	-3.766445	0.0003