

LAMPIRAN

Lampiran 1

Daftar Nama Perusahaan

No.	Kode Perusahaan	Nama Perusahaan
1.	AMFG	Asahimas Flat Glass Tbk
2.	ASII	Astra International Tbk
3.	AUTO	Astra Auto Part Tbk
4.	BATA	Sepatu Bata Tbk
5.	CPIN	Charoen Pokphand Indonesia Tbk
6.	DLTA	Delta Djakarta Tbk
7.	DVLA	Darya Varia Laboratoria Tbk
8.	EKAD	Ekadharma International Tbk
9.	GGRM	Gudang Garam Tbk
10.	ICBP	Indofood CBP Sukses Makmur Tbk
11.	KLBF	Kalbe Farma Tbk
12.	LION	Lion Metal Works Tbk
13.	LMSH	Lionmesh Prima Tbk
14.	MYOR	Mayora Indah Tbk
15.	ROTI	Nippon Indosari Corporindo Tbk
16.	SCCO	Supreme Cable Manufacturing and Commerce Tbk
17.	SKLT	Sekar Laut Tbk
18.	SMGR	Semen Indonesia Tbk d.h Semen Gresik Tbk
20.	SMSM	Selamat Sempurna Tbk
21.	TCID	Mandom Indonesia Tbk
22.	TOTO	Surya Toto Indonesia Tbk
23.	TRST	Trias Sentosa Tbk
24.	TSPC	Tempo Scan Pasific Tbk

25.	UNVR	Unilever Indonesia Tbk
26.	WIIM	Wismilak Inti Makmur Tbk
27.	WTON	Wijaya Karya Beton Tbk

Lampiran 2

**TABULASI DATA VARIABEL PENELITIAN
SEKTOR PERUSAHAAN MANUFAKTUR YANG TERDAFTAR DI BEI
PERIODE 2012-2016**

TAHUN	KODE	ROA	CR	DAR	SIZE	DPR
2012	AMFG	0.111256	3.887013	0.136954	28.76739	0.100171
2013	AMFG	0.095598	4.177813	0.133910	28.89498	0.102613
2014	AMFG	0.117047	5.684360	0.101633	28.99670	0.074803
2015	AMFG	0.079935	4.654344	0.112259	29.08270	0.101715
2016	AMFG	0.047311	2.019830	0.160782	29.33666	0.133311
2012	ASII	0.124768	1.399073	0.297234	32.83653	0.503270
2013	ASII	0.104195	1.241963	0.332435	32.99697	0.525622
2014	ASII	0.093739	1.322593	0.311500	33.09498	0.531812
2015	ASII	0.063614	1.379305	0.310640	33.13405	0.732163
2016	ASII	0.069894	1.239383	0.340185	33.19881	0.537371
2012	AUTO	0.127895	1.164936	0.309826	29.81501	0.298341
2013	AUTO	0.080078	1.839950	0.213163	30.15554	0.541596
2014	AUTO	0.066505	1.331865	0.268259	30.29692	0.505329
2015	AUTO	0.022505	1.322916	0.252868	30.29401	0.940057
2016	AUTO	0.033083	1.505120	0.222973	30.31288	0.308281
2012	BATA	0.120785	2.124102	0.293058	27.07608	0.523986
2013	BATA	0.065190	1.692635	0.378057	27.24637	0.788959
2014	BATA	0.091344	1.552257	0.408101	27.37599	0.540645
2015	BATA	0.162865	2.470996	0.265237	27.40193	0.056409
2016	BATA	0.052479	2.570106	0.258138	27.41379	0.759407
2012	CPIN	0.217099	3.312750	0.175538	30.14457	0.256595
2013	CPIN	0.160836	3.792315	0.148010	30.38609	0.298038
2014	CPIN	0.083722	2.240683	0.214128	30.66897	0.431824
2015	CPIN	0.073549	2.114167	0.228917	30.84656	0.160679
2016	CPIN	0.091940	2.172770	0.229302	30.81758	0.214154
2012	DLTA	0.286353	5.264640	0.160900	27.33706	0.904018
2013	DLTA	0.311979	4.762271	0.181181	27.48835	0.726607
2014	DLTA	0.290412	4.473236	0.192503	27.62294	0.709342
2015	DLTA	0.184957	6.423658	0.135237	27.66863	0.535909
2016	DLTA	0.212481	7.603872	0.115080	27.81150	0.378673
2012	DVLA	0.138560	4.310207	0.178393	27.70305	0.236923
2013	DVLA	0.105707	4.241750	0.181062	27.80502	0.418454
2014	DVLA	0.065464	5.181298	0.144456	27.84310	0.301969
2015	DVLA	0.078396	3.522905	0.215289	27.95040	0.723993
2016	DVLA	0.099312	2.854937	0.244506	28.05718	0.256816

2012	EKAD	0.132160	2.201910	0.299079	26.33601	0.135985
2013	EKAD	0.114815	2.162931	0.308188	26.56275	0.143880
2014	EKAD	0.099079	2.329604	0.309345	26.74271	0.157056
2015	EKAD	0.120712	3.568782	0.204250	26.68862	0.133386
2016	EKAD	0.129089	4.885572	0.098377	27.27792	0.079574
2012	GGRM	0.098019	2.170217	0.332511	31.35694	0.493709
2013	GGRM	0.086348	1.722079	0.395794	31.55833	0.363149
2014	GGRM	0.092670	1.620165	0.408500	31.69526	0.294840
2015	GGRM	0.101611	1.770359	0.378631	31.78215	0.243638
2016	GGRM	0.105997	1.937891	0.343733	31.77339	0.752480
2012	ICBP	0.128559	2.772091	0.201622	30.50760	0.452117
2013	ICBP	0.105092	2.410628	0.220834	30.68820	0.501727
2014	ICBP	0.101632	2.183202	0.250138	30.84630	0.049308
2015	ICBP	0.110056	2.326008	0.225987	30.91045	0.440048
2016	ICBP	0.125642	2.406782	0.223853	30.99493	0.428956
2012	KLBF	0.188480	3.405397	0.200852	29.87364	0.571095
2013	KLBF	0.174144	2.839259	0.233370	30.05716	0.507884
2014	KLBF	0.170711	3.403637	0.192025	30.15073	0.392084
2015	KLBF	0.150236	3.696495	0.172737	30.24816	0.452435
2016	KLBF	0.154399	4.131144	0.152185	30.35403	0.392224
2012	LION	0.196942	9.344585	0.097462	26.79515	0.182782
2013	LION	0.129895	6.728855	0.127824	26.93501	0.321278
2014	LION	0.081655	3.694665	0.220221	27.12037	0.424606
2015	LION	0.071980	9.960302	0.079829	27.18369	0.452130
2016	LION	0.061745	8.660587	0.091390	27.25387	0.491350
2012	LMSH	0.321146	4.067414	0.194763	25.57957	0.023254
2013	LMSH	0.101504	4.196560	0.194209	25.67696	0.100119
2014	LMSH	0.052911	5.567920	0.138350	25.66431	0.259350
2015	LMSH	0.014534	8.088936	0.082360	25.61948	0.493715
2016	LMSH	0.038401	2.770115	0.217879	25.81596	0.076765
2012	MYOR	0.089663	2.761123	0.231790	29.74758	0.136583
2013	MYOR	0.104381	2.402064	0.275678	29.90420	0.183282
2014	MYOR	0.039823	2.089937	0.302624	29.96230	0.509625
2015	MYOR	0.110223	2.365337	0.277843	30.05960	0.122208
2016	MYOR	0.107463	2.250172	0.300567	30.18999	0.202901
2012	ROTI	0.123781	1.124645	0.162211	27.81745	0.194323
2013	ROTI	0.086694	1.136427	0.175673	28.23133	0.235960
2014	ROTI	0.088001	1.366400	0.143548	28.39318	0.083747
2015	ROTI	0.099965	2.053422	0.146294	28.62661	0.103467
2016	ROTI	0.095826	2.962274	0.109774	28.70248	0.191806
2012	SCCO	0.114156	1.462059	0.550700	28.02773	0.206229

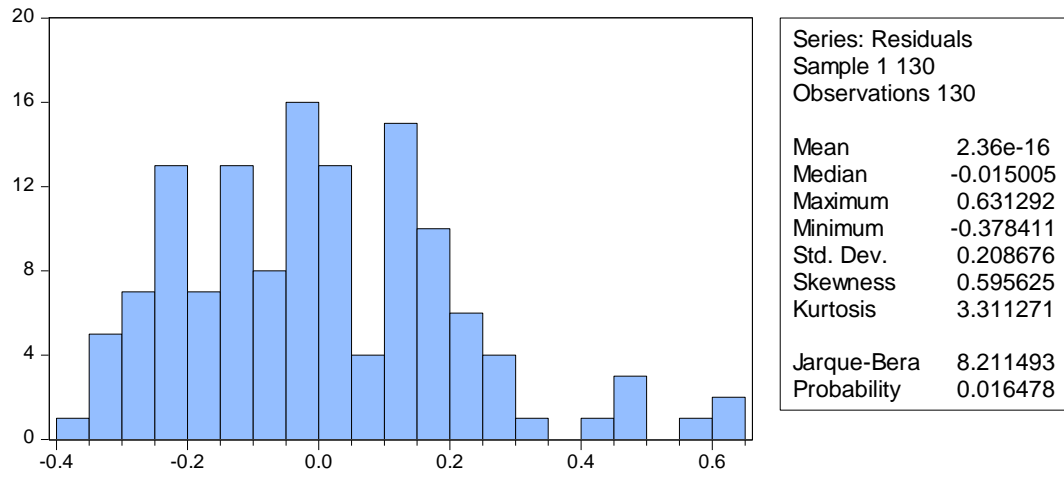
2013	SCCO	0.059569	1.394167	0.592136	28.19749	0.491174
2014	SCCO	0.083103	1.566265	0.498806	28.13543	0.225484
2015	SCCO	0.089739	1.685818	0.461969	28.20378	0.258760
2016	SCCO	0.139022	1.689474	0.487833	28.52708	0.135851
2012	SKLT	0.031883	1.414771	0.355660	26.24371	0.173507
2013	SKLT	0.037882	1.227532	0.416280	26.43366	0.181138
2014	SKLT	0.049704	1.183801	0.426526	26.52712	0.167648
2015	SKLT	0.053212	1.192456	0.421979	26.65580	0.169178
2016	SKLT	0.036334	1.315319	0.297942	27.06581	0.200827
2012	SMGR	0.185358	1.705896	0.181541	30.91115	0.407663
2013	SMGR	0.173881	1.882372	0.172041	31.05830	0.411781
2014	SMGR	0.162426	2.208980	0.153674	31.16659	0.435969
2015	SMGR	0.118613	1.596969	0.172966	31.27263	0.494593
2016	SMGR	0.102540	1.272519	0.184315	31.42035	0.402182
2012	SMSM	0.186333	1.866538	0.334297	27.99650	0.375235
2013	SMSM	0.205932	2.111977	0.306330	28.16910	0.397458
2014	SMSM	0.240922	2.112016	0.306849	28.19029	0.571995
2015	SMSM	0.207786	2.393789	0.257515	28.42858	0.420831
2016	SMSM	0.222727	2.860253	0.225517	28.44406	0.619879
2012	TCID	0.119196	7.728869	0.078828	27.86338	0.494731
2013	TCID	0.109245	3.573201	0.138695	28.01353	0.464536
2014	TCID	0.094060	1.798190	0.262273	28.24795	0.426784
2015	TCID	0.261503	4.991116	0.107070	28.36440	0.144022
2016	TCID	0.074166	5.259540	0.102194	28.41268	0.508685
2012	TOTO	0.154956	2.154358	0.294725	28.05148	0.167957
2013	TOTO	0.135472	2.194985	0.284332	28.18845	0.209404
2014	TOTO	0.144925	2.108497	0.260848	28.33772	0.168602
2015	TOTO	0.116922	2.406742	0.229600	28.52283	0.243133
2016	TOTO	0.065299	2.189950	0.228225	28.57937	0.428560
2012	TRST	0.028085	1.303321	0.294009	28.41407	0.913868
2013	TRST	0.010109	1.142941	0.320484	28.81303	0.851798
2014	TRST	0.009225	1.237775	0.292883	28.81314	0.466686
2015	TRST	0.007540	1.308475	0.258994	28.84218	0.554632
2016	TRST	0.010270	1.297018	0.276479	28.82209	0.415448
2012	TSPC	0.137099	3.093311	0.236809	29.16422	0.537463
2013	TSPC	0.118073	2.961942	0.249164	29.31889	0.531812
2014	TSPC	0.104474	3.002186	0.221239	29.35249	0.582520
2015	TSPC	0.084207	2.537551	0.269938	29.46914	0.551767
2016	TSPC	0.082829	2.652140	0.251057	29.51594	0.419562
2012	UNVR	0.403768	0.668263	0.628778	30.11468	0.939728
2013	UNVR	0.401000	0.696357	0.630755	30.22240	0.946511

2014	UNVR	0.401839	0.714914	0.620716	30.28993	0.910185
2015	UNVR	0.372017	0.653971	0.643838	30.38659	0.988334
2016	UNVR	0.381631	0.605632	0.649604	30.44916	0.953948
2012	WIIM	0.064031	2.062216	0.421530	27.81937	0.680890
2013	WIIM	0.107666	2.430002	0.332793	27.83723	0.057284
2014	WIIM	0.084256	2.274950	0.329690	27.91838	0.354342
2015	WIIM	0.097625	2.893760	0.254491	27.92570	0.216858
2016	WIIM	0.078522	3.394229	0.216980	27.93381	0.495164
2012	WTON	0.074703	2.062216	0.211941	28.50695	0.221494
2013	WTON	0.082679	1.056661	0.615050	28.70171	0.202144
2014	WTON	0.084791	1.064013	0.381906	28.96664	0.050392
2015	WTON	0.038550	1.368808	0.402474	29.12529	0.355479
2016	WTON	0.060392	1.309124	0.399757	29.17053	0.120162

Lampiran 3

Statistik Deskriptif

Date: 03/14/18 Time: 07:45 Sample: 1 130					
	ROA	CR	DAR	SIZE	DPR
Mean	0.121070	2.744062	0.267516	28.91626	0.386592
Median	0.102086	2.192467	0.246835	28.60299	0.394841
Maximum	0.403768	9.960302	0.649604	33.19881	0.988334
Minimum	0.007540	0.605632	0.078828	25.57957	0.023254
Std. Dev.	0.081152	1.809657	0.128733	1.715653	0.236165
Skewness	1.707843	1.807908	1.144743	0.357348	0.660484
Kurtosis	6.212699	6.472830	4.250151	2.725156	2.857429
Jarque-Bera Probability	119.1036 0.000000	136.1462 0.000000	36.85838 0.000000	3.175956 0.204338	9.561943 0.008388
Sum	15.73907	356.7281	34.77704	3759.114	50.25694
Sum Sq. Dev.	0.849549	422.4567	2.137809	379.7072	7.194832
Observations	130	130	130	130	130

Lampiran 4**Hasil Uji Normalitas**

Lampiran 5

Uji Heteroskedastisitas

Heteroskedasticity Test: Glejser				
F-statistic	1.742739	Prob. F(4,125)		0.1447
Obs*R-squared	6.866847	Prob. Chi-Square(4)		0.1431
Scaled explained SS	6.734948	Prob. Chi-Square(4)		0.1506
Test Equation:				
Dependent Variable: ARESID				
Method: Least Squares				
Date: 03/14/18 Time: 10:18				
Sample: 1 130				
Included observations: 130				
Variable	Coefficient	Std. Error	t-Statistic	Prob.
C	0.460616	0.228506	2.015774	0.0460
ROA	-0.092008	0.147685	-0.623004	0.5344
CR	0.004747	0.009325	0.509094	0.6116
DAR	0.202206	0.124080	1.629648	0.1057
SIZE	-0.012162	0.007214	-1.685904	0.0943
R-squared	0.052822	Mean dependent var		0.164907
Adjusted R-squared	0.022512	S.D. dependent var		0.127045
S.E. of regression	0.125607	Akaike info criterion		-1.273613
Sum squared resid	1.972143	Schwarz criterion		-1.163324
Log likelihood	87.78487	Hannan-Quinn criter.		-1.228799
F-statistic	1.742739	Durbin-Watson stat		1.727484
Prob(F-statistic)	0.144739			

Lampiran 6**Uji Autokolerasi**

R-squared	0.052822	Mean dependent var	0.164907
Adjusted R-squared	0.022512	S.D. dependent var	0.127045
S.E. of regression	0.125607	Akaike info criterion	-1.273613
Sum squared resid	1.972143	Schwarz criterion	-1.163324
Log likelihood	87.78487	Hannan-Quinn criter.	-1.228799
F-statistic	1.742739	Durbin-Watson stat	1.727484
Prob(F-statistic)	0.144739		

Lampiran 7

Uji Multikoleniaritas

Variance Inflation Factors			
Date: 03/14/18 Time: 10:11			
Sample: 1 130			
Included observations: 130			
Variable	Coefficient Variance	Uncentered VIF	Centered VIF
C	0.148727	430.2380	NA
ROA	0.062125	3.808690	1.174439
CR	0.000248	7.723654	2.328420
DAR	0.043853	11.16462	2.086127
SIZE	0.000148	359.8174	1.252532

Lampiran 8**Hasil Uji Koefisien Determinasi (R^2)**

R-squared	0.052822
Adjusted R-squared	0.022512

Lampiran 9**HASIL Uji PARSIAL (Uji-t)**

Variable	Coefficient	Std. Error	t-Statistic	Prob.
C	-1.111293	0.385652	-2.881596	0.0047
ROA	0.630830	0.249249	2.530920	0.0126
CR	0.027962	0.015738	1.776683	0.0781
DAR	0.587132	0.209411	2.803738	0.0059
SIZE	0.041074	0.012175	3.373551	0.0010