

Lampiran I

Uji Statistik Deskriptif Descriptive Statistics

	N	Minimum	Maximum	Mean	Std. Deviation
GBDO	35	509617	2024760000	687154175.86	661661684.394
GBP	35	.025	.241	.09837	.065852
CAR	35	.110	.229	.16447	.029337
NPL	35	.004	.071	.02771	.016363
BOPO	35	.599	.998	.77171	.142375
LDR	35	.686	1.031	.88224	.086418
ROA	35	.001	.052	.02479	.016135
Valid N (listwise)	35				

Uji Normalitas One-Sample Kolmogorov-Smirnov Test

		Unstandardized Residual
N		35
Normal Parameters ^{a,b}	Mean	.0000000
	Std. Deviation	.00277438
Most Extreme Differences	Absolute	.116
	Positive	.116
	Negatif	-.082
Kolmogorov-Smirnov Z		.688
Asymp. Sig. (2-tailed)		.730

a. Test distribution is Normal.

b. Calculated from data.

Uji Heterokedastisitas

Coefficients^a

Model	Unstandardized Coefficients		Standardized Coefficients	t	Sig.
	B	Std. Error	Beta		
(Constant)	-13.120	9.564		-1.372	.181
LnGBDO	.236	.363	.309	.650	.521
LnGBP	-1.189	.845	-.472	-1.408	.170
1 LnCAR	1.900	3.027	.199	.628	.535
LnNPL	1.278	.781	.522	1.635	.113
LnBOPO	-4.898	4.078	-.523	-1.201	.240
LnLDR	3.789	5.648	.221	.671	.508

a. Dependent Variable: Lnei2

Uji Autokorelasi

Runs Test

	Unstandardize d Residual
Test Value ^a	-.00057
Cases < Test Value	17
Cases >= Test Value	18
Total Cases	35
Number of Runs	16
Z	-.682
Asymp. Sig. (2- tailed)	.495

a. Median

Uji Multikolinearitas
Coefficients^a

Model	Unstandardized Coefficients		Standardized Coefficients	t	Sig.	Collinearity Statistics	
	B	Std. Error	Beta			Tolerance	VIF
(Constant)	.075	.010		7.474	.000		
GBDO	3.989E-012	.000	.159	2.030	.052	.171	5.843
GBP	-.043	.016	-.176	-2.740	.011	.255	3.914
1 CAR	.076	.034	.138	2.213	.035	.272	3.678
NPL	.073	.062	.074	1.189	.244	.271	3.696
BOPO	-.118	.009	-1.041	-12.449	.000	.151	6.621
LDR	.032	.011	.170	2.969	.006	.322	3.110

a. Dependent Variable: ROA

Koefisien Determinasi R²
Model Summary

Model	R	R Square	Adjusted R Square	Std. Error of the Estimate
1	.985 ^a	.970	.964	.003057

a. Predictors: (Constant), LDR, BPRP, NPL, CAR, DORP, BOPO

Uji F
ANOVA^a

Model	Sum of Squares	Df	Mean Square	F	Sig.
1 Regression	.009	6	.001	153.175	.000 ^b
Residual	.000	28	.000		
Total	.009	34			

a. Dependent Variable: ROA

b. Predictors: (Constant), LDR, BPRP, NPL, CAR, DORP, BOPO

Uji T
Coefficients^a

Model	Unstandardized Coefficients		Standardized Coefficients	t	Sig.
	B	Std. Error	Beta		
(Constant)	.075	.010		7.474	.000
1 GBDO	3.989E-012	.000	.159	2.030	.052
GBP	-.043	.016	-.176	-2.740	.011
CAR	.076	.034	.138	2.213	.035
NPL	.073	.062	.074	1.189	.244
BOPO	-.118	.009	-1.041	-12.449	.000
LDR	.032	.011	.170	2.969	.006

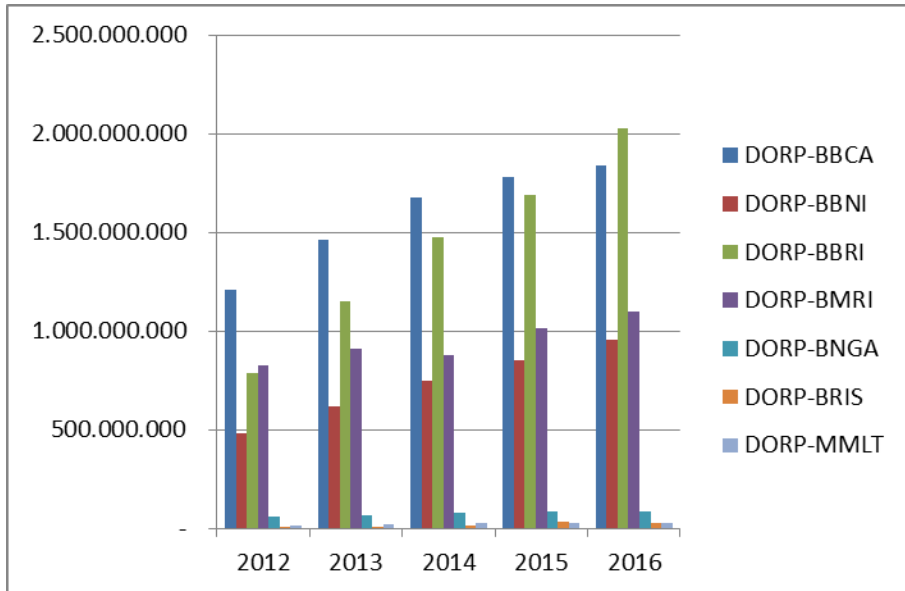
a. Dependent Variable: ROA

Lampiran II

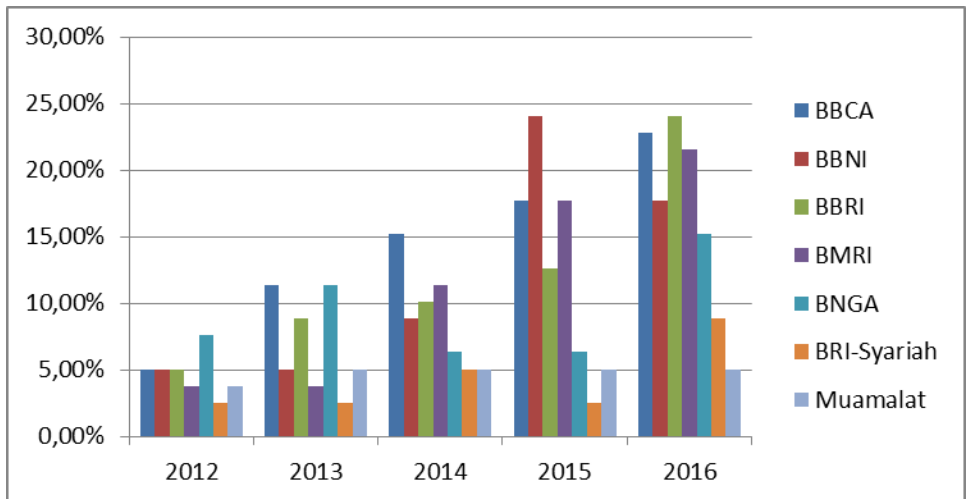
Transaksi ATM Bank Indonesia



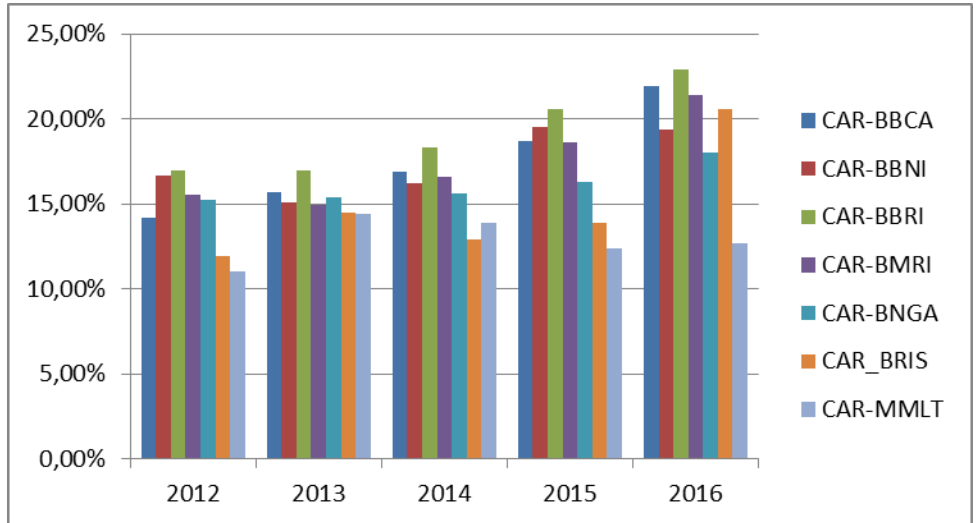
Transaksi ATM Perbankan *Green Banking*



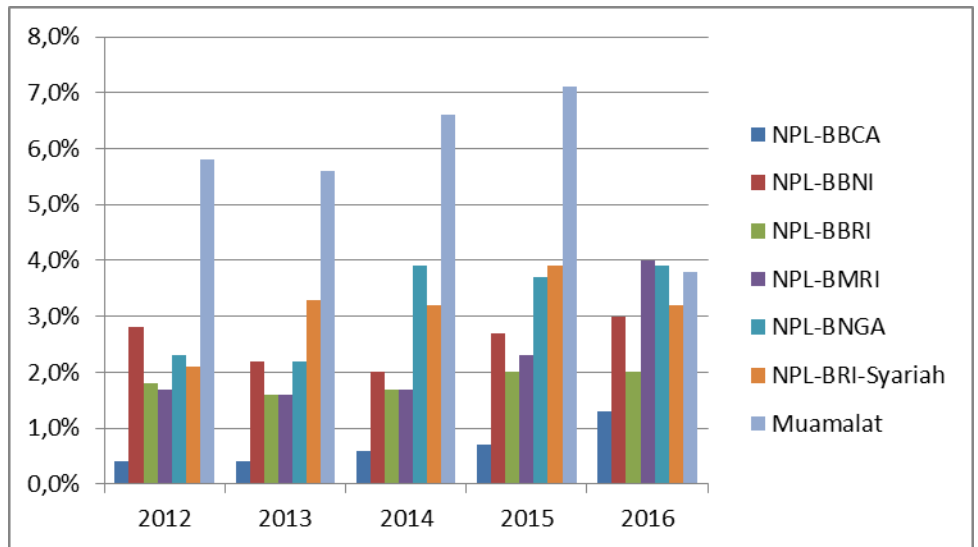
Item CSR Dalam *Annual Report*



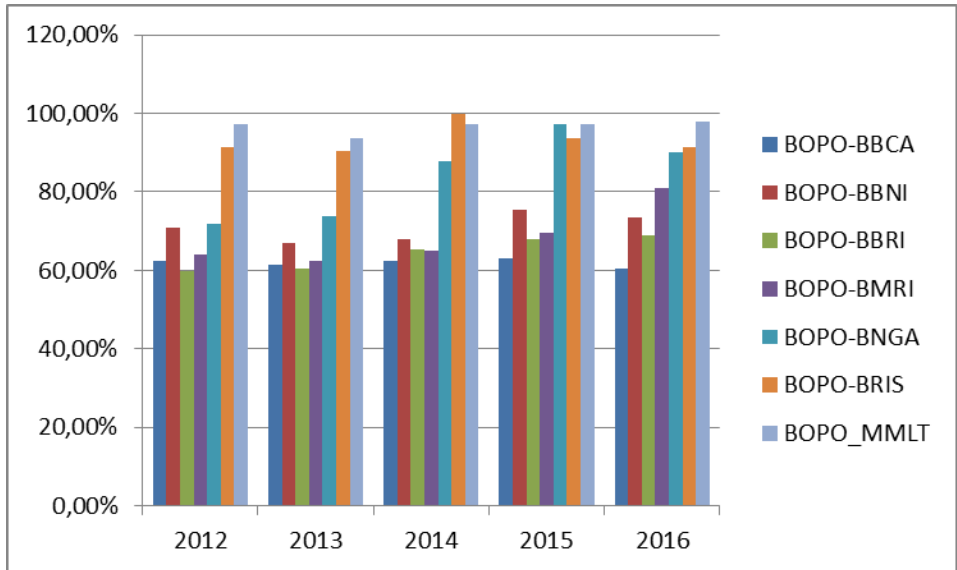
Rasio CAR



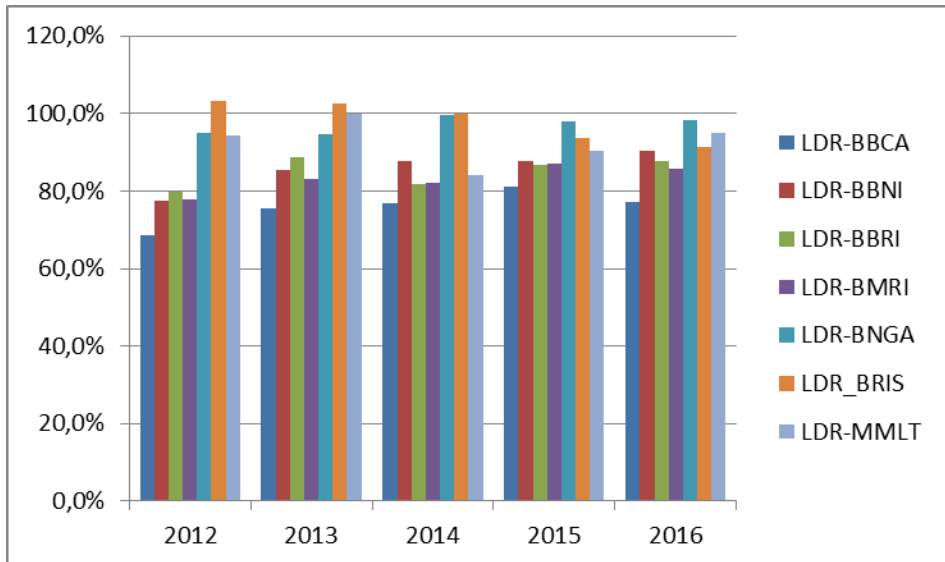
Rasio NPL



Rasio BOPO



Rasio LDR



Rasio ROA

