

## LAMPIRAN

### 1. Data Aset Trafo Daya Gardu Induk Cempaka Tahun 2017

No	Gardu Induk	Trafo Terpasang				Penyulang	Rayon
		No Trafo	Teg	Daya (MVA)	I Trafo (A)		
1	Cempaka	3	70/20	10	289	<b>CPK04</b>	Banjarbaru
2		4	70/20	10	289	<b>STANDBY</b>	
3		5	150/20	30	866	<b>CPK01</b>	Martapura
						<b>CPK13</b>	Banjarbaru
						<b>CPK15</b>	
4		6	150/20	60	1732	<b>CPK06</b>	Martapura
						<b>CPK07</b>	
						<b>CPK10</b>	Banjarbaru
						<b>CPK11</b>	
						<b>CPK12</b>	Pelaihari
						<b>CPK20</b>	Banjarbaru
<b>CPK21</b>							
5		7	150/20	60	1732	<b>CPK14</b>	Banjarbaru
						<b>CPK16</b>	
						<b>CPK19</b>	Martapura

### 2. Data Jumlah Pelanggan Setiap Penyulang Rayon Martapura Tahun 2017

No.	Penyulang	Jumlah Pelanggan
1	CPK 01	13430
2	CPK 06	19391
3	CPK 07	20139
4	CPK 19	13046
<b>Total Pelanggan</b>		<b>66006</b>

### 3. Data Standar Target Kerja Rayon Martapura Tahun 2017

Indikator	Standar Nilai	Satuan
SAIDI	65.85	Jam/Pelanggan/Tahun
SAIFI	52.5	Kali/Pelanggan/Tahun

4. Data Aset Penyulang Gardu Induk Cempaka Tahun 2017

No	Nama Penyulang	Jumlah Trafo Distribusi	Keterangan
1	CPK01	90	-
2	CPK04	80	-
3	CPK06	127	-
4	CPK07	73	-
5	CPK10	40	-
6	CPK11	12	-
7	CPK12	93	-
8	CPK13	168	-
9	CPK14	55	-
10	CPK15	41	-
11	CPK16	130	-
12	CPK19	106	-
13	CPK20	82	-
14	CPK21	8	-
15	CPK18	<i>supply ke AP2B</i>	
Total		1105	Buah

Penyulang	Tipe Penghantar	Panjang Penyulang (KMS)
CPK01	Aluminium	45.76
CPK04	Aluminium	34.74
CPK06	Aluminium	107.786
CPK07	Aluminium	114.38
CPK10	Aluminium	11.59
CPK11	Aluminium	3.3
CPK12	Aluminium	83.99
CPK13	Aluminium	76.1
CPK14	Aluminium	25
CPK15	Aluminium	24.2
CPK16	Aluminium	42.4
CPK18	Aluminium	0.1
CPK19	Aluminium	147.84
CPK20	Aluminium	15.54
CPK21	Aluminium	4.94
TOTAL		737.666

5. Data Monitoring Frekuensi Pemadaman Akibat Gangguan Tahun 2017

PNY	TAHUN 2017 (kali)												
	Jan	Feb	Mar	Apr	Mei	Jun	Jul	Ags	Sep	Okt	Nov	Des	Total
CPK01	0	0	0	0	0	1	1	2	0	3	1	0	<b>8</b>
CPK04	2	1	1	1	3	0	0	0	2	1	2	1	<b>14</b>
CPK06	3	1	3	2	0	0	1	0	4	0	0	1	<b>15</b>
CPK07	0	1	2	0	2	1	2	0	1	0	0	1	<b>10</b>
CPK10	1	2	0	1	0	0	0	2	0	1	2	0	<b>9</b>
CPK11	0	2	4	0	3	0	0	0	1	1	4	0	<b>15</b>
CPK12	3	4	2	1	1	1	5	1	3	1	0	1	<b>23</b>
CPK13	1	1	0	2	0	1	0	3	2	1	0	1	<b>12</b>
CPK14	3	2	1	5	2	1	2	0	2	1	1	2	<b>22</b>
CPK15	2	1	1	0	3	0	1	2	1	1	3	0	<b>15</b>
CPK16	0	4	3	0	2	1	0	0	4	1	1	0	<b>16</b>
CPK18	0	0	0	0	0	0	0	0	0	0	0	0	<b>0</b>
CPK19	12	4	1	1	0	1	1	0	3	0	2	4	<b>29</b>
CPK20	2	2	1	2	1	0	1	0	1	0	1	0	<b>11</b>
CPK21	0	0	0	0	0	0	0	0	0	1	1	0	<b>2</b>
<b>Total</b>	<b>29</b>	<b>25</b>	<b>19</b>	<b>15</b>	<b>17</b>	<b>7</b>	<b>14</b>	<b>10</b>	<b>24</b>	<b>12</b>	<b>18</b>	<b>11</b>	<b>201</b>

6. Data Monitoring Durasi Pemadaman Akibat Gangguan Tahun 2017

PNY	Tahun 2017 (menit)												
	Jan	Feb	Mar	Apr	Mei	Jun	Jul	Ags	Sep	Okt	Nov	Des	Total
CPK01	0	0	0	0	0	1	11	144	0	213	63	0	<b>432</b>
CPK04	12	22	5	10.75	41	0	0	0	25	6	39.9	20	<b>181.65</b>
CPK06	76	68	41	30	0	0	7	0	124	0	0	32	<b>378</b>
CPK07	0	109	47	0	44	1	81	0	26	0	0	78	<b>386</b>
CPK10	3	35	0	3	0	0	0	38	0	27	123	0	<b>229</b>
CPK11	0	92	222	0	23	0	0	0	49	73	364	0	<b>823</b>
CPK12	228	259	94	8	61	81	379	131	577	27	0	81	<b>1926</b>
CPK13	4	18	0	121	0	39	0	186	104	38	0	122	<b>632</b>
CPK14	33	43	2	192	60	30	21	0	39	174	81	229	<b>904</b>
CPK15	108	8	6	0	78	0	35	289	64	27	538	0	<b>1153</b>
CPK16	0	91	17	0	100	134	0	0	462	47	47	0	<b>898</b>
CPK18	0	0	0	0	0	0	0	0	0	0	0	0	<b>0</b>
CPK19	259	384	4	78	0	29	12	0	131	0	132	298	<b>1327</b>
CPK20	12	136	76	278	22	0	12	0	23	0	268	0	<b>827</b>
CPK21	0	0	0	0	0	0	0	0	0	204	82	0	<b>286</b>
<b>Total</b>	<b>735</b>	<b>1265</b>	<b>514</b>	<b>720.75</b>	<b>429</b>	<b>315</b>	<b>558</b>	<b>788</b>	<b>1624</b>	<b>836</b>	<b>1737.9</b>	<b>860</b>	<b>10383</b>

7. Data Monitoring Penyebab Gangguan Tahun 2017

Keterangan kode gangguan: I1 (Komponen JTM), I2 (Peralatan JTM), I3 (Gardu), I4 (Tiang), E1 (Pohon), E2 (Alam), E3 (Binatang), E4 (Pihak ke III).

PNY	JANUARI 2017 (kali)								TOTAL
	I1	I2	I3	I4	E1	E2	E3	E4	
CPK01	0	0	0	0	0	0	0	0	0
CPK04	0	0	0	0	2	0	0	0	2
CPK06	0	3	0	0	0	0	0	0	3
CPK07	0	0	0	0	0	0	0	0	0
CPK10	0	0	0	0	1	0	0	0	1
CPK11	0	0	0	0	0	0	0	0	0
CPK12	0	3	0	0	0	0	0	0	3
CPK13	0	0	0	0	1	0	0	0	1
CPK14	0	0	1	0	2	0	0	0	3
CPK15	0	2	0	0	0	0	0	0	2
CPK16	0	0	0	0	0	0	0	0	0
CPK18	0	0	0	0	0	0	0	0	0
CPK19	1	7	0	0	4	0	0	0	12
CPK20	0	1	0	0	1	0	0	0	2
CPK21	0	0	0	0	0	0	0	0	0
<b>TOTAL</b>	<b>1</b>	<b>16</b>	<b>1</b>	<b>0</b>	<b>11</b>	<b>0</b>	<b>0</b>	<b>0</b>	<b>29</b>

PNY	FEBRUARI 2017 (kali)								TOTAL
	I1	I2	I3	I4	E1	E2	E3	E4	
CPK01	0	0	0	0	0	0	0	0	0
CPK04	0	0	0	0	1	0	0	0	1
CPK06	0	0	0	0	0	1	0	0	1
CPK07	0	1	0	0	0	0	0	0	1
CPK10	0	0	0	0	0	1	1	0	2
CPK11	0	1	0	0	1	0	0	0	2
CPK12	0	2	0	0	1	1	0	0	4
CPK13	0	1	0	0	0	0	0	0	1
CPK14	0	1	0	0	0	0	1	0	2
CPK15	0	0	0	0	1	0	0	0	1
CPK16	0	0	0	0	3	1	0	0	4
CPK18	0	0	0	0	0	0	0	0	0
CPK19	0	4	0	0	0	0	0	0	4
CPK20	0	0	0	0	1	1	0	0	2
CPK21	0	0	0	0	0	0	0	0	0
<b>TOTAL</b>	<b>0</b>	<b>10</b>	<b>0</b>	<b>0</b>	<b>8</b>	<b>5</b>	<b>2</b>	<b>0</b>	<b>25</b>

PNY	MARET 2017 (kali)								TOTAL
	I1	I2	I3	I4	E1	E2	E3	E4	
CPK01	0	0	0	0	0	0	0	0	0
CPK04	0	0	0	0	1	0	0	0	1
CPK06	0	2	0	0	0	1	0	0	3
CPK07	0	0	0	0	0	1	0	1	2
CPK10	0	0	0	0	0	0	0	0	0
CPK11	0	3	1	0	0	0	0	0	4
CPK12	0	2	0	0	0	0	0	0	2
CPK13	0	0	0	0	0	0	0	0	0
CPK14	0	0	0	0	1	0	0	0	1
CPK15	0	0	0	0	1	0	0	0	1
CPK16	0	0	0	0	2	1	0	0	3
CPK18	0	0	0	0	0	0	0	0	0
CPK19	0	0	0	0	1	0	0	0	1
CPK20	0	1	0	0	0	0	0	0	1
CPK21	0	0	0	0	0	0	0	0	0
<b>TOTAL</b>	<b>0</b>	<b>8</b>	<b>1</b>	<b>0</b>	<b>6</b>	<b>3</b>	<b>0</b>	<b>1</b>	<b>19</b>

PNY	APRIL 2017 (kali)								TOTAL
	I1	I2	I3	I4	E1	E2	E3	E4	
CPK01	0	0	0	0	0	0	0	0	0
CPK04	0	0	0	0	0	0	1	0	1
CPK06	0	2	0	0	0	0	0	0	2
CPK07	0	0	0	0	0	0	0	0	0
CPK10	0	0	0	0	1	0	0	0	1
CPK11	0	0	0	0	0	0	0	0	0
CPK12	0	0	0	0	1	0	0	0	1
CPK13	2	0	0	0	0	0	0	0	2
CPK14	0	5	0	0	0	0	0	0	5
CPK15	0	0	0	0	0	0	0	0	0
CPK16	0	0	0	0	0	0	0	0	0
CPK18	0	0	0	0	0	0	0	0	0
CPK19	0	0	0	0	0	1	0	0	1
CPK20	0	2	0	0	0	0	0	0	2
CPK21	0	0	0	0	0	0	0	0	0
<b>TOTAL</b>	<b>2</b>	<b>9</b>	<b>0</b>	<b>0</b>	<b>2</b>	<b>1</b>	<b>1</b>	<b>0</b>	<b>15</b>

PNY	MEI 2017 (kali)								
	I1	I2	I3	I4	E1	E2	E3	E4	TOTAL
CPK01	0	0	0	0	0	0	0	0	0
CPK04	0	3	0	0	0	0	0	0	3
CPK06	0	0	0	0	0	0	0	0	0
CPK07	0	2	0	0	0	0	0	0	2
CPK10	0	0	0	0	0	0	0	0	0
CPK11	0	1	0	0	1	0	0	1	3
CPK12	0	1	0	0	0	0	0	0	1
CPK13	0	0	0	0	0	0	0	0	0
CPK14	0	2	0	0	0	0	0	0	2
CPK15	0	1	0	0	2	0	0	0	3
CPK16	0	2	0	0	0	0	0	0	2
CPK18	0	0	0	0	0	0	0	0	0
CPK19	0	0	0	0	0	0	0	0	0
CPK20	0	1	0	0	0	0	0	0	1
CPK21	0	0	0	0	0	0	0	0	0
<b>TOTAL</b>	<b>0</b>	<b>13</b>	<b>0</b>	<b>0</b>	<b>3</b>	<b>0</b>	<b>0</b>	<b>1</b>	<b>17</b>

PNY	JUNI 2017 (kali)								
	I1	I2	I3	I4	E1	E2	E3	E4	TOTAL
CPK01	0	0	0	0	1	0	0	0	1
CPK04	0	0	0	0	0	0	0	0	0
CPK06	0	0	0	0	0	0	0	0	0
CPK07	0	0	0	0	1	0	0	0	1
CPK10	0	0	0	0	0	0	0	0	0
CPK11	0	0	0	0	0	0	0	0	0
CPK12	0	0	0	0	1	0	0	0	1
CPK13	0	0	0	0	1	0	0	0	1
CPK14	0	0	0	0	0	1	0	0	1
CPK15	0	0	0	0	0	0	0	0	0
CPK16	0	0	0	1	0	0	0	0	1
CPK18	0	0	0	0	0	0	0	0	0
CPK19	0	0	0	0	0	1	0	0	1
CPK20	0	0	0	0	0	0	0	0	0
CPK21	0	0	0	0	0	0	0	0	0
<b>TOTAL</b>	<b>0</b>	<b>0</b>	<b>0</b>	<b>1</b>	<b>4</b>	<b>2</b>	<b>0</b>	<b>0</b>	<b>7</b>

PNY	JULI 2017 (kali)								TOTAL
	I1	I2	I3	I4	E1	E2	E3	E4	
CPK01	0	0	0	0	0	1	0	0	1
CPK04	0	0	0	0	0	0	0	0	0
CPK06	0	0	0	0	0	1	0	0	1
CPK07	0	0	0	0	2	0	0	0	2
CPK10	0	0	0	0	0	0	0	0	0
CPK11	0	0	0	0	0	0	0	0	0
CPK12	1	2	0	1	0	0	0	1	5
CPK13	0	0	0	0	0	0	0	0	0
CPK14	0	2	0	0	0	0	0	0	2
CPK15	0	1	0	0	0	0	0	0	1
CPK16	0	0	0	0	0	0	0	0	0
CPK18	0	0	0	0	0	0	0	0	0
CPK19	0	0	0	0	0	1	0	0	1
CPK20	0	0	0	0	1	0	0	0	1
CPK21	0	0	0	0	0	0	0	0	0
<b>TOTAL</b>	<b>1</b>	<b>5</b>	<b>0</b>	<b>1</b>	<b>3</b>	<b>3</b>	<b>0</b>	<b>1</b>	<b>14</b>

PNY	AGUSTUS 2017 (kali)								TOTAL
	I1	I2	I3	I4	E1	E2	E3	E4	
CPK01	0	1	0	0	1	0	0	0	2
CPK04	0	0	0	0	0	0	0	0	0
CPK06	0	0	0	0	0	0	0	0	0
CPK07	0	0	0	0	0	0	0	0	0
CPK10	0	0	0	0	0	0	2	0	2
CPK11	0	0	0	0	0	0	0	0	0
CPK12	0	1	0	0	0	0	0	0	1
CPK13	2	1	0	0	0	0	0	0	3
CPK14	0	0	0	0	0	0	0	0	0
CPK15	0	1	0	0	1	0	0	0	2
CPK16	0	0	0	0	0	0	0	0	0
CPK18	0	0	0	0	0	0	0	0	0
CPK19	0	0	0	0	0	0	0	0	0
CPK20	0	0	0	0	0	0	0	0	0
CPK21	0	0	0	0	0	0	0	0	0
<b>TOTAL</b>	<b>2</b>	<b>4</b>	<b>0</b>	<b>0</b>	<b>2</b>	<b>0</b>	<b>2</b>	<b>0</b>	<b>10</b>

PNY	SEPTEMBER 2017 (kali)								
	I1	I2	I3	I4	E1	E2	E3	E4	TOTAL
CPK01	0	0	0	0	0	0	0	0	0
CPK04	0	0	0	0	1	0	1	0	2
CPK06	0	4	0	0	0	0	0	0	4
CPK07	0	1	0	0	0	0	0	0	1
CPK10	0	0	0	0	0	0	0	0	0
CPK11	0	1	0	0	0	0	0	0	1
CPK12	0	0	0	0	2	1	0	0	3
CPK13	0	2	0	0	0	0	0	0	2
CPK14	0	1	0	0	1	0	0	0	2
CPK15	0	1	0	0	0	0	0	0	1
CPK16	0	4	0	0	0	0	0	0	4
CPK18	0	0	0	0	0	0	0	0	0
CPK19	0	0	0	0	3	0	0	0	3
CPK20	0	1	0	0	0	0	0	0	1
CPK21	0	0	0	0	0	0	0	0	0
<b>TOTAL</b>	<b>0</b>	<b>15</b>	<b>0</b>	<b>0</b>	<b>7</b>	<b>1</b>	<b>1</b>	<b>0</b>	<b>24</b>

PNY	OKTOBER 2017 (kali)								
	I1	I2	I3	I4	E1	E2	E3	E4	TOTAL
CPK01	0	0	1	0	2	0	0	0	3
CPK04	0	1	0	0	0	0	0	0	1
CPK06	0	0	0	0	0	0	0	0	0
CPK07	0	0	0	0	0	0	0	0	0
CPK10	0	0	0	0	0	0	0	1	1
CPK11	0	1	0	0	0	0	0	0	1
CPK12	0	1	0	0	0	0	0	0	1
CPK13	0	0	0	0	0	1	0	0	1
CPK14	0	0	0	0	1	0	0	0	1
CPK15	0	0	0	0	1	0	0	0	1
CPK16	0	1	0	0	0	0	0	0	1
CPK18	0	0	0	0	0	0	0	0	0
CPK19	0	0	0	0	0	0	0	0	0
CPK20	0	0	0	0	0	0	0	0	0
CPK21	0	0	0	0	0	1	0	0	1
<b>TOTAL</b>	<b>0</b>	<b>4</b>	<b>1</b>	<b>0</b>	<b>4</b>	<b>2</b>	<b>0</b>	<b>1</b>	<b>12</b>



PNY	NOVEMBER 2017 (kali)								
	I1	I2	I3	I4	E1	E2	E3	E4	TOTAL
CPK01	0	1	0	0	0	0	0	0	1
CPK04	0	2	0	0	0	0	0	0	2
CPK06	0	0	0	0	0	0	0	0	0
CPK07	0	0	0	0	0	0	0	0	0
CPK10	0	1	0	0	0	1	0	0	2
CPK11	0	4	0	0	0	0	0	0	4
CPK12	0	0	0	0	0	0	0	0	0
CPK13	0	0	0	0	0	0	0	0	0
CPK14	0	0	0	0	0	1	0	0	1
CPK15	0	1	0	0	0	2	0	0	3
CPK16	0	0	0	0	0	1	0	0	1
CPK18	0	0	0	0	0	0	0	0	0
CPK19	0	1	0	0	0	1	0	0	2
CPK20	0	1	0	0	0	0	0	0	1
CPK21	0	0	0	0	0	1	0	0	1
<b>TOTAL</b>	<b>0</b>	<b>11</b>	<b>0</b>	<b>0</b>	<b>0</b>	<b>7</b>	<b>0</b>	<b>0</b>	<b>18</b>

PNY	DESEMBER 2017 (kali)								
	I1	I2	I3	I4	E1	E2	E3	E4	TOTAL
CPK01	0	0	0	0	0	0	0	0	0
CPK04	0	0	0	0	1	0	0	0	1
CPK06	0	1	0	0	0	0	0	0	1
CPK07	0	0	0	0	0	1	0	0	1
CPK10	0	0	0	0	0	0	0	0	0
CPK11	0	0	0	0	0	0	0	0	0
CPK12	0	1	0	0	0	0	0	0	1
CPK13	1	0	0	0	0	0	0	0	1
CPK14	0	1	0	0	1	0	0	0	2
CPK15	0	0	0	0	0	0	0	0	0
CPK16	0	0	0	0	0	0	0	0	0
CPK18	0	0	0	0	0	0	0	0	0
CPK19	0	3	0	0	1	0	0	0	4
CPK20	0	0	0	0	0	0	0	0	0
CPK21	0	0	0	0	0	0	0	0	0
<b>TOTAL</b>	<b>1</b>	<b>6</b>	<b>0</b>	<b>0</b>	<b>3</b>	<b>1</b>	<b>0</b>	<b>0</b>	<b>11</b>

8. Data Monitoring Frekuensi Pemadaman Akibat Defisit Tahun 2017

PNY	TAHUN 2017 (kali)												
	Jan	Feb	Mar	Apr	Mei	Jun	Jul	Ags	Sep	Okt	Nov	Des	Total
CPK01	0	0	0	0	0	0	0	0	1	0	1	0	2
CPK04	0	1	0	0	0	0	0	0	1	0	0	0	2
CPK06	2	1	0	0	0	0	0	0	1	0	3	1	8
CPK07	1	3	0	0	0	0	0	0	1	0	3	0	8
CPK10	0	0	0	0	0	0	0	0	1	0	0	0	1
CPK11	0	0	0	0	0	0	0	0	0	0	0	0	0
CPK12	0	1	0	0	0	0	0	0	1	0	0	0	2
CPK13	1	0	0	0	0	0	0	0	1	0	0	0	2
CPK14	1	5	0	0	0	0	0	0	1	0	4	1	12
CPK15	0	0	0	0	0	0	0	0	1	1	1	0	3
CPK16	2	1	0	0	0	0	0	0	1	0	2	0	6
CPK18	0	0	0	0	0	0	0	0	0	0	0	0	0
CPK19	0	5	0	0	0	0	0	0	1	1	1	0	8
CPK20	1	1	0	0	0	0	0	0	1	1	1	0	5
CPK21	0	0	0	0	0	0	0	0	0	0	0	0	0
<b>Total</b>	<b>8</b>	<b>18</b>	<b>0</b>	<b>0</b>	<b>0</b>	<b>0</b>	<b>0</b>	<b>0</b>	<b>12</b>	<b>3</b>	<b>16</b>	<b>2</b>	<b>59</b>

9. Data Monitoring Durasi Pemadaman Akibat Defisit Tahun 2017

PNY	TAHUN 2017 (menit)												
	Jan	Feb	Mar	Apr	Mei	Jun	Jul	Ags	Sep	Okt	Nov	Des	Total
CPK01	0	0	0	0	0	0	0	0	174	0	121	0	295
CPK04	0	289	0	0	0	0	0	0	93	0	0	0	382
CPK06	24	37	0	0	0	0	0	0	195	0	291	91	638
CPK07	16	171	0	0	0	0	0	0	491	0	237	0	915
CPK10	0	0	0	0	0	0	0	0	485	0	0	0	485
CPK11	0	0	0	0	0	0	0	0	0	0	0	0	0
CPK12	0	72	0	0	0	0	0	0	634	0	0	0	706
CPK13	15	0	0	0	0	0	0	0	47	0	0	0	62
CPK14	15	523	0	0	0	0	0	0	467	0	447	23	1475
CPK15	0	0	0	0	0	0	0	0	552	158	129	0	839
CPK16	27	113	0	0	0	0	0	0	147	0	150	0	437
CPK18	0	0	0	0	0	0	0	0	0	0	0	0	0
CPK19	0	1171	0	0	0	0	0	0	413	67	94	0	1745
CPK20	126	62	0	0	0	0	0	0	445	51	12	0	696
CPK21	0	0	0	0	0	0	0	0	0	0	0	0	0
<b>Total</b>	<b>223</b>	<b>2437.9</b>	<b>0</b>	<b>0</b>	<b>0</b>	<b>0</b>	<b>0</b>	<b>0</b>	<b>4143</b>	<b>276</b>	<b>1481</b>	<b>114</b>	<b>8675</b>

10. Data Monitoring Frekuensi Pemadaman Akibat Pemeliharaan Tahun 2017

PNY	TAHUN 2017 (kali)												
	Jan	Feb	Mar	Apr	Mei	Jun	Jul	Ags	Sep	Okt	Nov	Des	Total
CPK01	0	0	0	0	0	0	1	1	0	1	0	1	4
CPK04	0	0	0	0	0	1	0	1	0	1	1	0	4
CPK06	1	0	3	1	1	0	0	1	0	1	0	0	8
CPK07	1	0	4	2	2	0	0	1	1	1	0	1	13
CPK10	0	0	1	0	0	0	0	0	0	0	0	1	2
CPK11	0	0	2	0	0	0	0	1	0	2	0	0	5
CPK12	0	0	2	0	0	0	0	1	0	1	0	1	5
CPK13	0	0	2	0	0	0	0	1	0	1	0	1	5
CPK14	1	0	3	1	3	0	1	0	0	3	0	1	13
CPK15	1	0	3	0	0	0	1	1	0	2	0	0	8
CPK16	0	0	1	0	1	0	0	0	0	1	0	0	3
CPK18	0	0	1	1	0	0	0	0	0	0	1	0	3
CPK19	0	0	4	1	3	0	0	1	0	2	1	1	13
CPK20	0	0	1	0	0	0	1	0	0	0	0	0	2
CPK21	0	0	1	0	0	0	0	0	0	0	0	0	1
<b>Total</b>	<b>4</b>	<b>0</b>	<b>28</b>	<b>6</b>	<b>10</b>	<b>1</b>	<b>4</b>	<b>9</b>	<b>1</b>	<b>16</b>	<b>3</b>	<b>7</b>	<b>89</b>

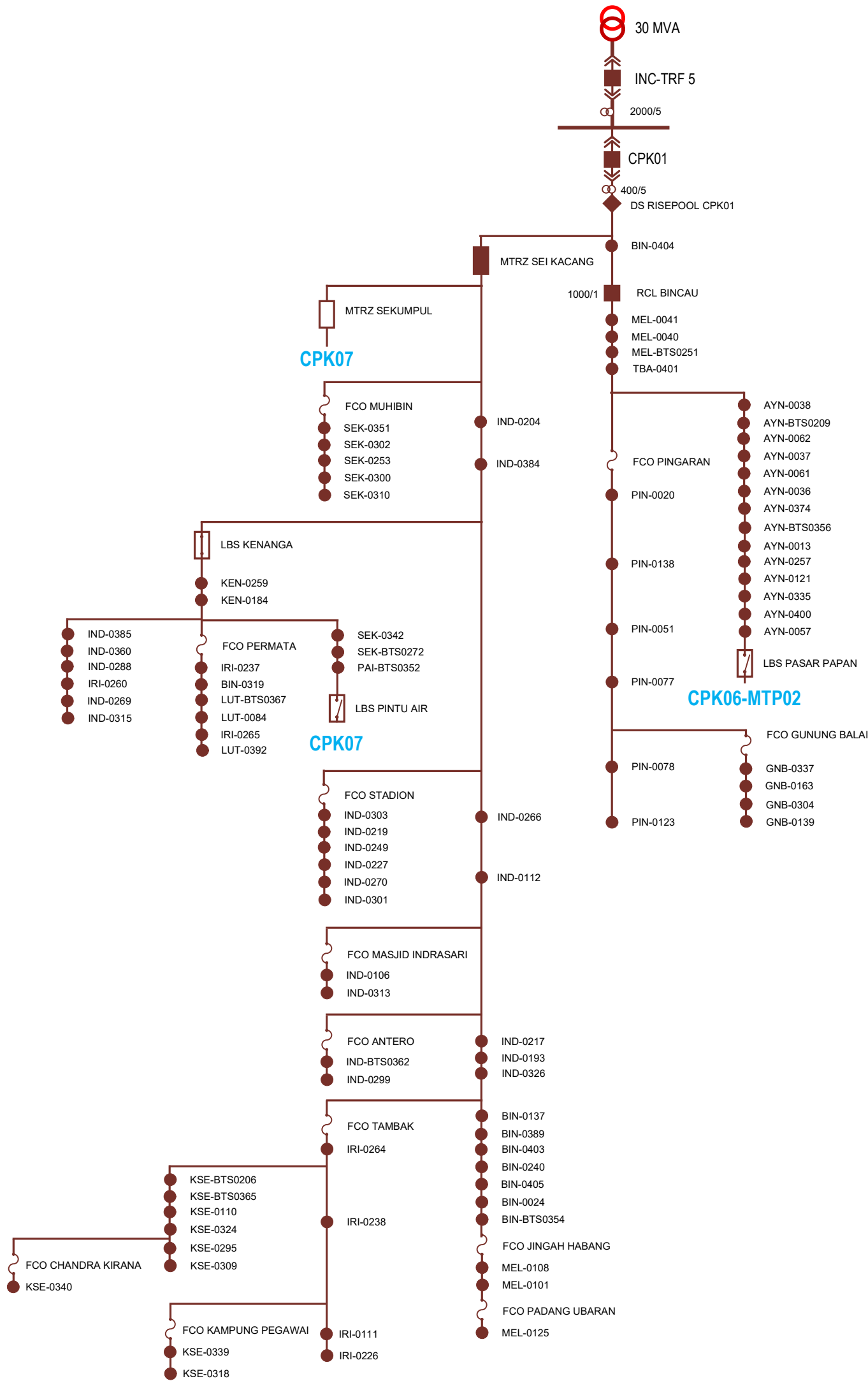
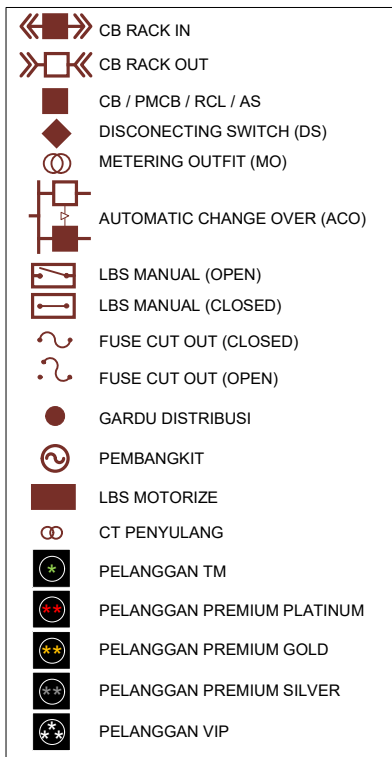
11. Data Monitoring Durasi Pemadaman Akibat Pemeliharaan Tahun 2017

PNY	TAHUN 2017 (menit)												
	Jan	Feb	Mar	Apr	Mei	Jun	Jul	Ags	Sep	Okt	Nov	Des	Total
CPK01	0	0	0	0	0	0	166	206	0	109	0	315	796
CPK04	0	0	0	0	0	257	0	280	0	356	219	0	1112
CPK06	112	0	882	435	352	0	0	225	0	293	0	0	2299
CPK07	127	0	1119	611	526	0	0	250	413	120	0	383	3549
CPK10	0	0	32	0	0	0	0	0	0	0	0	258	290
CPK11	0	0	446	0	0	0	0	169	0	247	0	0	862
CPK12	0	0	511	0	0	0	0	339	0	114	0	121	1085
CPK13	0	0	441	0	0	0	0	532	0	150	0	128	1251
CPK14	38	0	1047	412	1069	0	53	0	0	357	0	192	3168
CPK15	120	0	586	0	0	0	29	125	0	256	0	0	1116
CPK16	0	0	242	0	106	0	0	0	0	74	0	0	422
CPK18	0	0	310	12	0	0	0	0	0	0	33	0	355
CPK19	0	0	1399	418	1139	0	0	221	0	419	93	232	3921
CPK20	0	0	296	0	0	0	97	0	0	0	0	0	393
CPK21	0	0	281	0	0	0	0	0	0	0	0	0	281
<b>Total</b>	<b>397</b>	<b>0</b>	<b>7592</b>	<b>1888</b>	<b>3192</b>	<b>257</b>	<b>345</b>	<b>2347</b>	<b>413</b>	<b>2495</b>	<b>345</b>	<b>1629</b>	<b>20900</b>



# GI CEMPAKA

## CPK01

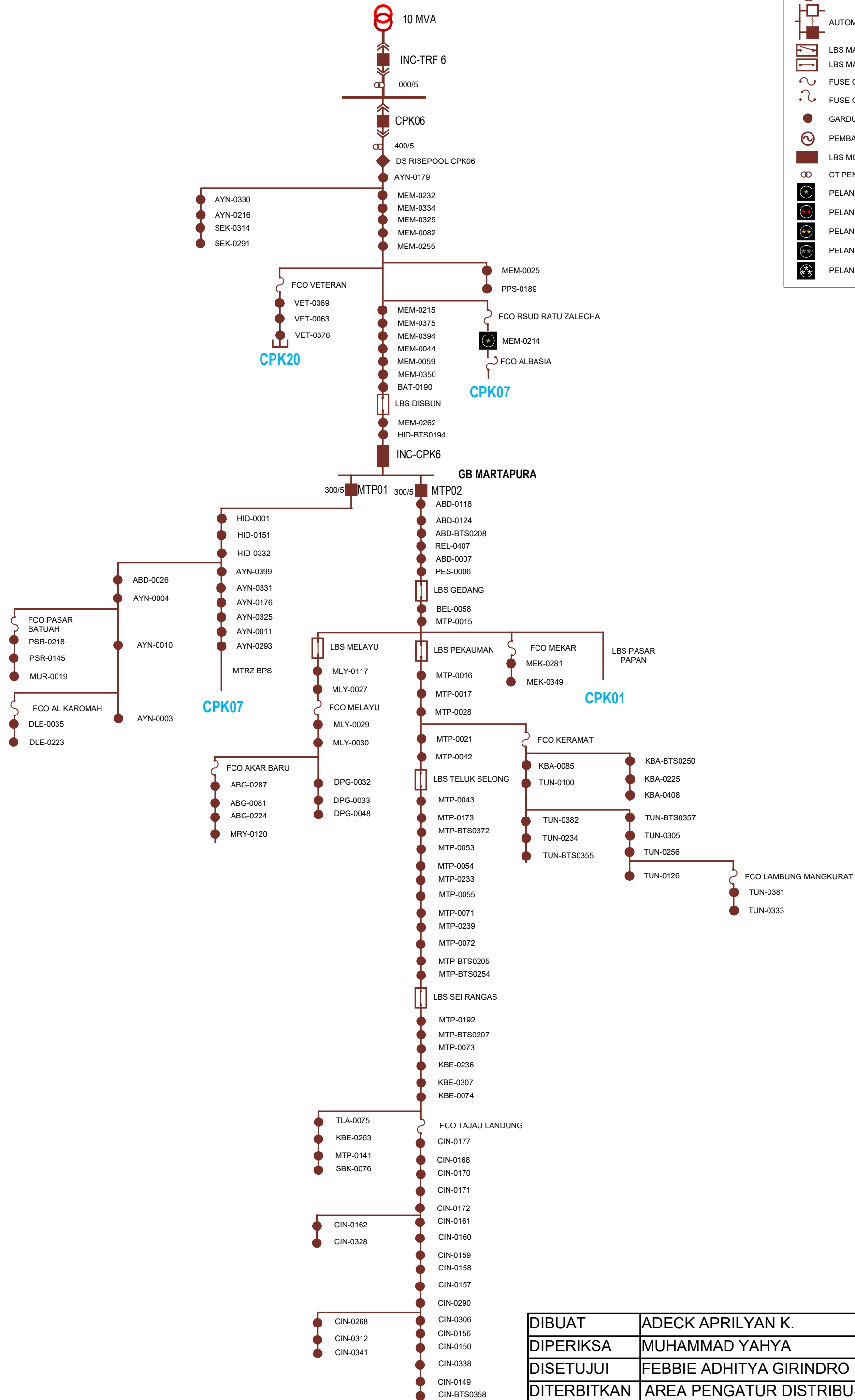
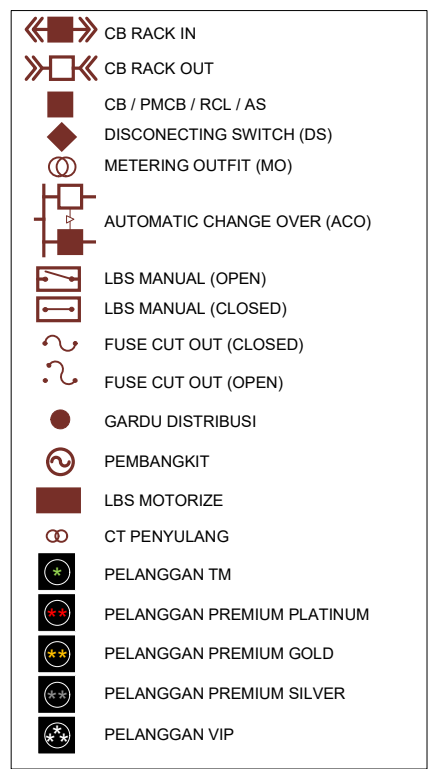


DIBUAT	ADECK APRILYAN K.	
DIPERIKSA	MUHAMMAD YAHYA	
DISETUJUI	FEBBIE ADHITYA GIRINDRO	
DITERBITKAN	AREA PENGATUR DISTRIBUSI	15-02-2018



# GI CEMPAKA

## CPK06

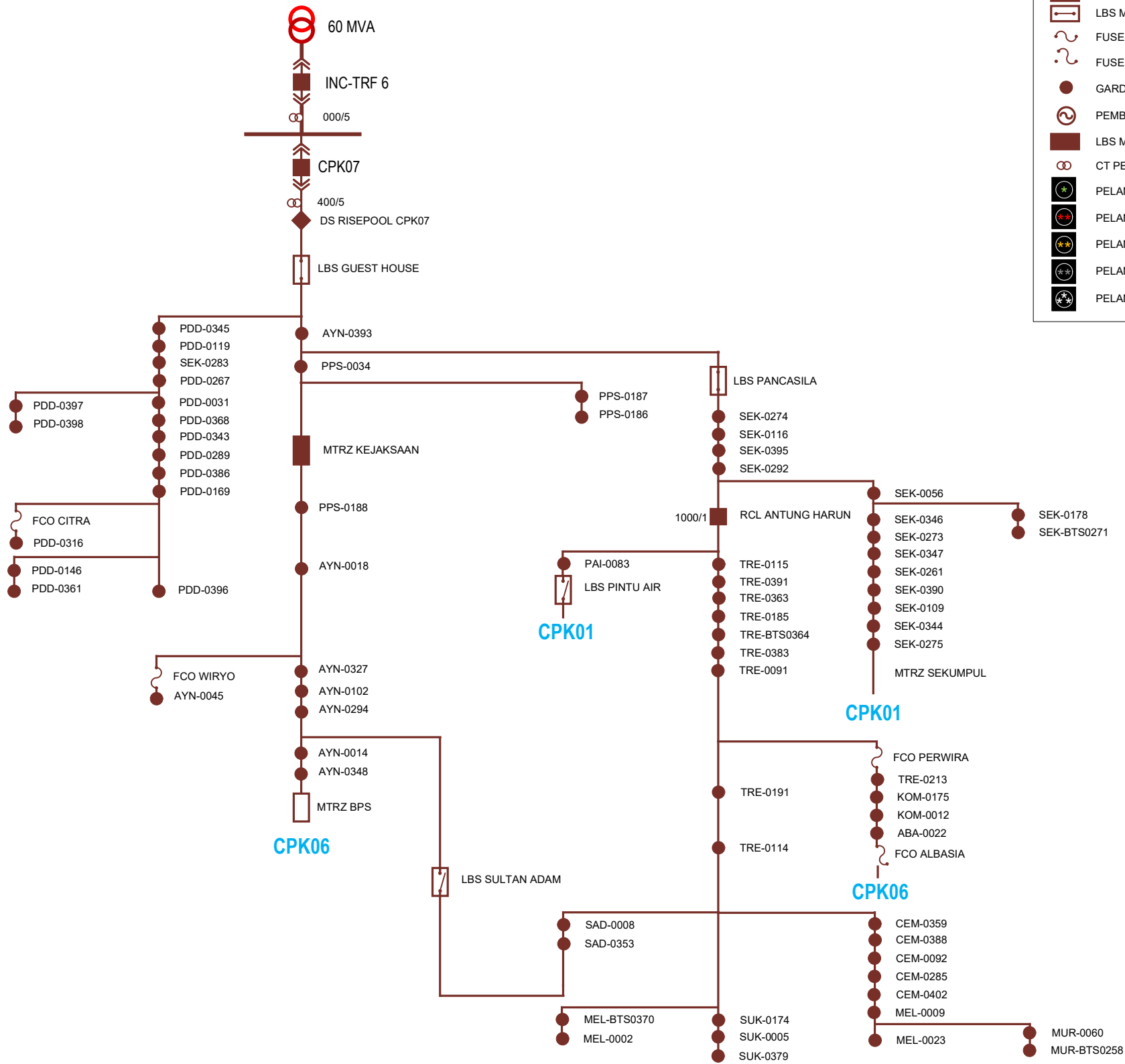
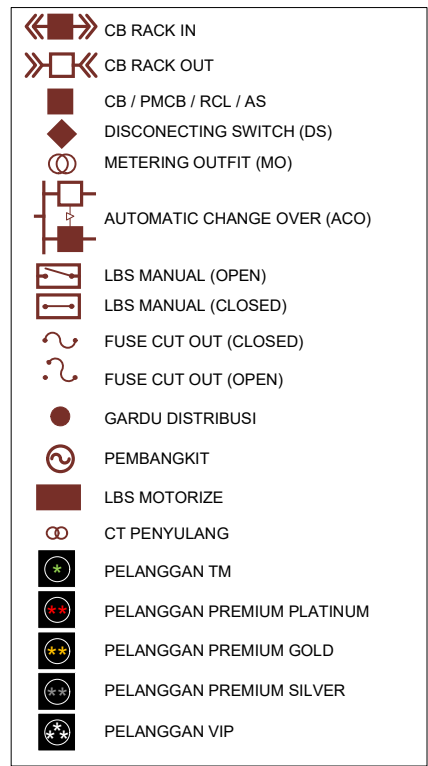


DIBUAT	ADECK APRILYAN K.	
DIPERIKSA	MUHAMMAD YAHYA	
DISETUJUI	FEBBIE ADHITYA GIRINDRO	
DITERBITKAN	AREA PENGATUR DISTRIBUSI	15-02-2018



# GI CEMPAKA

## CPK07

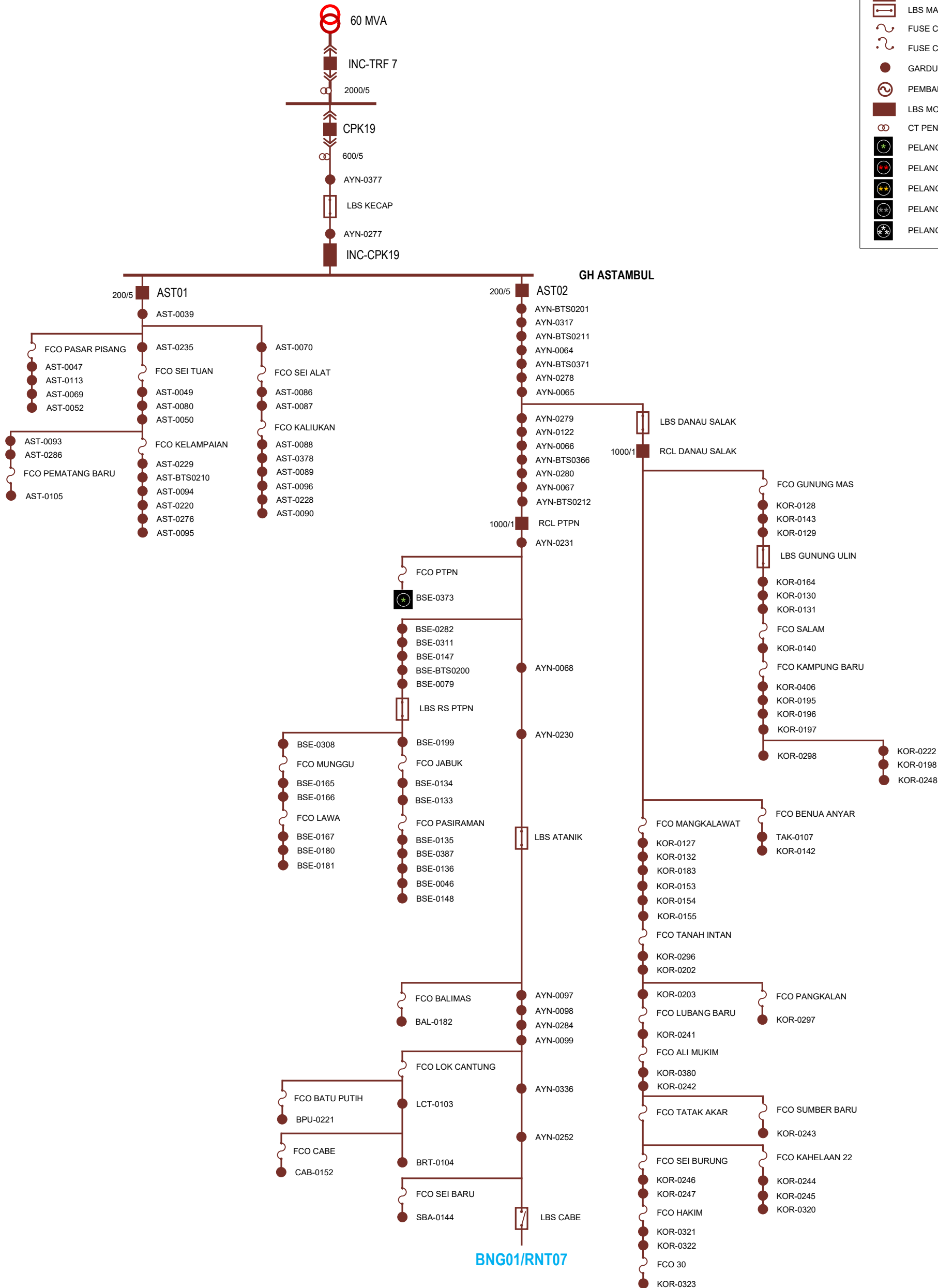
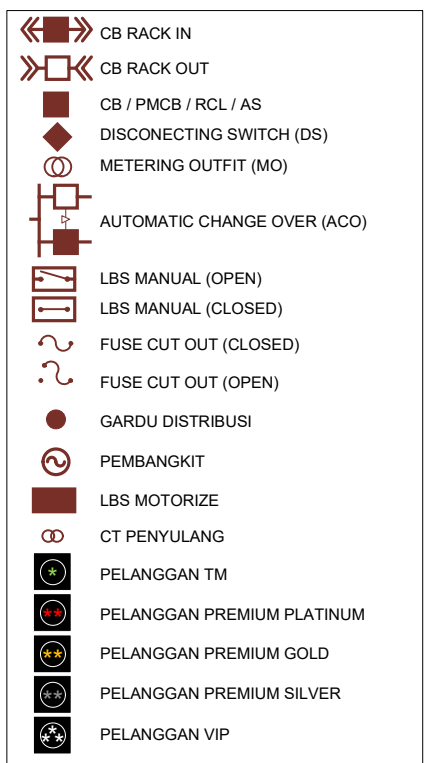


DIBUAT	ADECK APRILYAN K.	
DIPERIKSA	MUHAMMAD YAHYA	
DISETUJUI	FEBBIE ADHITYA GIRINDRO	
DITERBITKAN	AREA PENGATUR DISTRIBUSI	15-02-2018



# GI CEMPAKA

## CPK19



DIBUAT	ADECK APRILYAN K.	
DIPERIKSA	MUHAMMAD YAHYA	
DISETUJUI	FEBBIE ADHITYA GIRINDRO	
DITERBITKAN	AREA PENGATUR DISTRIBUSI	15-02-2018