

## LAMPIRAN 1

## Daftar Nama Perusahaan Manufaktur Dalam Penelitian

No	Kode	Nama Perusahaan
1	AISA	Tiga Pilar Sejahtera Food Tbk
2	AKPI	Argha Karya Prima Industry Tbk
3	ALDO	Alkindo Naratama Tbk
4	ALMI	Alumindo Light Metal Industry Tbk
5	AMFG	Asahimas Flat Glass Tbk
6	ARNA	Arwana Citra Mulia Tbk
7	ASII	Astra International Tbk
8	AUTO	Astra Auto Part Tbk
9	BAJA	Saranacentral Bajatama Tbk
10	BATA	Sepatu Bata Tbk
11	BRNA	Berlina Tbk
12	CEKA	Wilmar Cahaya Indonesia Tbk
13	CPIN	Charoen Pokphand Indonesia Tbk
14	DLTA	Delta Djakarta Tbk
15	DPNS	Duta Pertiwi Nusantara
16	DVLA	Darya Varia Laboratoria Tbk
17	FASW	Fajar Surya Wises Tbk
18	GGRM	Gudang Garam Tbk
19	GJTL	Gajah Tunggal Tbk
20	HMSP	Hanjaya Mandala Sampoerna Tbk
21	ICBP	Indofood CBP Sukses Makmur Tbk
22	IGAR	Champion Pasific Indonesia Tbk
23	IMAS	Indomobil Sukses Internasional Tbk
24	INAI	Indal Aluminium Industry Tbk
25	INCI	Intan Wijaya International Tbk
26	INDF	Indofood Sukses Makmur Tbk
27	INTP	Indocement Tunggal Prakasa Tbk
28	JECC	Jembo Cable Company Tbk
29	JPFA	Japfa Comfeed Indonesia Tbk
30	KAEF	Kimia Farma Tbk
31	KLBF	Kalbe Farma Tbk
32	KBLI	KMI Wire and Cable Tbk
33	KBLM	Kabelindo Murni Tbk
34	KIAS	Keramika Indonesia Assosiasi Tbk
35	LION	Lion Metal Works Tbk

36	LMSH	Lionmesh Prima Tbk
37	MAIN	Malindo Feedmil Tbk
38	MBTO	Martina Berto Tbk
39	MERK	Merck Tbk
40	MLBI	Multi Bintang Indonesia Tbk
41	MRAT	Mustika Ratu Tbk
42	MYOR	Mayora Indah Tbk
43	ROTI	Nippon Indosari Corporindo Tbk
44	SCCO	Supreme Cable Manufacturing and Commerce Tbk
45	SIDO	Industri Jamu dan Farmasi Sido Muncul Tbk
46	SIPD	Siearad Produce Tbk
47	SKBM	Sekar Bumi Tbk
48	SKLT	Sekar Laut Tbk
49	SMCB	Holcim Indonesia Tbk
50	SMGR	Semen Gresik Tbk
51	SPMA	Suparma Tbk
52	SQBB	Taisho Pharmaceutical Indonesia Tbk
53	TCID	Mandom Indonesia Tbk
54	TOTO	Surya Toto Indonesia Tbk
55	TRIS	Trisula International Tbk
56	TRST	Trias Sentosa Tbk
57	TSPC	Tempo Scan Pasific Tbk
58	ULTJ	Ultrajaya Milk Industry and Trading Company Tbk
59	UNVR	Unilever Indonesia Tbk
60	VOKS	Voksel Electric Tbk
61	WIIM	Wismilak Inti Makmur Tbk

LAMPIRAN

Data Rasio-Rasio Keuangan Perusahaan Manufaktur dalam Penelitian

NO	Perusahaan	Tahun	ROA	MBVE	DER	DPR
1	AISA	2012	0.0655873	1.5540462	0.9019746	0.0749771
2		2013	0.0690580	1.7753852	1.1303808	0.0675111
3		2015	0.0412483	0.9817488	1.2841420	0.0665445
4	AKPI	2014	0.0155770	0.5448688	1.1499753	0.3000290
5		2015	0.0095884	0.5372141	1.6031346	0.1771762
6		2016	0.0200289	0.5464114	1.3355599	0.1051694
7	ALDO	2014	0.0590252	2.5357124	1.2381654	0.0391719
8	ALMI	2012	0.0074136	0.3405439	2.2005832	1.1040106
9		2013	0.0094905	0.2811324	3.1866792	0.2358461
10		2014	0.0006067	0.2575332	4.0113256	6.3213102
11	AMFG	2012	0.1112559	1.4660438	0.2679317	0.1001705
12		2013	0.0955977	1.1004348	0.2820511	0.1026132
13		2014	0.1170468	1.0970464	0.2304023	0.0757029
14		2015	0.0799354	0.8384994	0.2595853	0.1017150
15		2016	0.0473114	0.8078874	0.5294488	0.1333108
16	ARNA	2012	0.1692886	4.9767626	0.5498464	0.2313218
17		2013	0.2093803	7.8335103	0.4772410	0.3214766
18		2014	0.2077955	7.0015689	0.3803259	0.4489296
19		2015	0.0497700	4.1026027	0.5991214	1.2371471
20		2016	0.0592113	4.0265706	0.6277139	0.4015611
21	ASII	2012	0.1247682	3.4256909	1.0294609	0.1174881
22		2013	0.1041945	2.5924602	1.0152371	0.1162016
23		2014	0.0937385	2.4981748	0.9616120	0.1171050
24		2015	0.0636136	1.9196677	0.9396916	0.1659481
25		2016	0.0698936	2.3944749	0.8716495	0.1216586
26	AUTO	2012	0.1278946	2.6009393	0.6192309	0.3564157
27		2013	0.0838518	1.8404099	0.3200128	0.1002199
28		2014	0.0665054	1.9970172	0.4187190	0.1209457
29		2015	0.0225050	0.7602533	0.4136358	1.2471226
30		2016	0.0330832	0.9377306	0.3868166	0.7178438
31	BAJA	2014	0.0144443	2.8387252	4.1752997	0.4027603
32	BATA	2012	0.1207846	2.0129630	0.4816130	0.2933949
33		2013	0.0651897	3.4723170	0.7152063	0.4417934
34		2014	0.0913437	3.3475828	0.8057863	0.2968010
35		2015	0.1628647	2.1382079	0.4533563	0.0564085
36		2016	0.0524785	1.8432922	0.4443782	0.5608588

37	BRNA	2012	0.0707391	1.6002389	1.5523775	0.2279054
38	CEKA	2014	0.0319288	0.8243245	1.3791366	0.7255847
39	CPIN	2012	0.2170988	7.3201203	0.5102650	0.2569000
40		2013	0.1608357	5.5616326	0.5799774	0.2982999
41		2015	0.0742396	3.3941048	0.9651362	0.1610631
42		2016	0.0919398	3.5790740	0.7097251	0.2136881
43	DLTA	2012	0.2863533	6.8259488	0.2458918	0.8253402
44		2013	0.3119785	8.9940683	0.2815469	0.6807871
45		2014	0.2904121	8.1692074	0.2975564	0.6670458
46		2015	0.1849573	4.9003317	0.2220994	0.5002941
47		2016	0.2124812	3.9543639	0.1831563	0.3775072
48	DPNS	2013	0.2606098	0.6965604	0.1474511	0.0743408
49		2014	0.0540018	0.4951187	0.1389124	0.4561061
50		2015	0.0359191	0.5310790	0.1375366	0.5037895
51		2016	0.0338007	0.5031139	0.1248371	0.1654096
52	DVLA	2012	0.1385598	2.2491925	0.2770435	0.2369231
53		2013	0.1057065	2.6937707	0.3010281	0.3071628
54		2014	0.0654638	1.9666855	0.2845045	0.1729901
55		2015	0.0783958	1.4956077	0.4137172	0.4152207
56		2016	0.0993123	1.8207087	0.4184832	0.4786847
57	FASW	2012	0.0009488	3.4967635	2.0870865	11.2366080
58		2016	0.0906434	3.2165677	1.7175495	0.0382187
59	GGRM	2012	0.0980192	4.0715374	0.5601659	0.4728987
60		2013	0.0863484	2.7471768	0.7259241	0.3511163
61		2014	0.0932898	3.5247999	0.7575170	0.2833360
62		2015	0.1016108	2.7842847	0.6708473	0.2385417
63		2016	0.1059970	3.1075855	0.5911250	0.7497179
64	GJTL	2012	0.0879771	1.4153225	1.3491951	0.0307777
65		2013	0.0078387	1.0227312	1.6816622	0.7819330
66		2014	0.0168217	0.8299511	1.6812826	0.1291298
67	HMSP	2012	0.3789041	19.7274883	0.9722497	0.7712440
68		2013	0.3947691	19.3216901	0.9360315	0.9192624
69		2014	0.3587335	22.2914809	1.1025626	1.0461254
70		2015	0.2726417	13.6605182	0.1872393	0.4377372
71		2016	0.3002293	13.0357879	0.2438408	0.8111678
72	ICBP	2012	0.1285591	3.7942945	0.4810861	0.4317576
73		2013	0.1050920	4.4834115	0.6031887	0.4852517
74		2014	0.1016323	5.0788409	0.6562699	0.4376073
75		2015	0.1100557	4.7948088	0.6208439	0.4428349
76		2016	0.1256421	5.4052115	0.5621980	0.4110714
77	IGAR	2012	0.1424963	1.6268722	0.2905187	0.5460878

78		2013	0.1112972	1.2704740	0.3942712	0.5550631
79		2014	0.1569011	1.1624331	0.3281198	0.1770901
80		2016	0.1577043	1.3526358	0.1758309	0.0701389
81	IMAS	2012	0.0511496	2.5674199	2.0792385	0.1814627
82		2013	0.0278350	2.0345538	2.3506693	0.1291063
83	INAI	2013	0.0065539	0.7523880	5.0631312	1.5778336
84		2014	0.0245839	0.7602743	5.1524185	0.1148934
85		2015	0.0215113	0.5349992	4.5468864	0.3874800
86		2016	0.0265512	0.7919490	4.1897141	0.4009791
87	INCI	2016	0.0370848	0.2281336	0.1092341	0.1812379
88	INDF	2012	0.0804764	1.5045442	0.7395721	0.3214965
89		2013	0.0437510	1.5101926	1.0350905	0.4754327
90		2014	0.0598835	1.4375507	1.0844596	0.2422741
91		2015	0.0403946	1.0537344	1.1295949	0.5207423
92		2016	0.0640942	1.5835828	0.8700923	0.2800718
93	INTP	2012	0.2093322	4.2558714	0.1718146	0.2264357
94		2013	0.1883808	3.2041795	0.1579599	0.3304982
95		2014	0.1825866	3.7131690	0.1654298	0.6281955
96		2015	0.1576310	3.4435460	0.1580666	1.1407045
97		2016	0.1283663	2.1688516	0.1534842	0.3947249
98	JECC	2012	0.0448135	2.0106975	3.9620385	0.2087453
99		2013	0.0181910	2.9183191	7.3964434	0.8044853
100		2015	0.0018143	0.5550415	2.6939251	3.6808188
101		2016	0.0834314	1.1251475	2.3746145	0.2114515
102	JPFA	2012	0.0980323	2.7527909	1.3012201	0.1485273
103		2013	0.0429451	2.4795591	1.8440341	0.3321756
104		2014	0.0244651	1.9144628	1.9736206	0.2764794
105		2016	0.1128048	1.7712978	1.0538888	0.0734953
106	KAEF	2012	0.0990990	0.9246818	0.4403740	0.1669544
107		2013	0.0872361	2.0173303	0.5217979	0.1426900
108		2014	0.0796888	4.4925253	0.6388452	0.2267664
109		2015	0.0781690	2.5949134	0.7379462	0.1854950
110		2016	0.0588822	6.7242450	1.0307068	0.1832481
111	KLBF	2012	0.1884802	7.3018826	0.2775926	0.5435311
112		2013	0.1741442	6.8934344	0.3311903	0.4896446
113		2014	0.1707111	8.7806023	0.2656036	0.3756921
114		2015	0.1502360	5.6567511	0.2521539	0.4328278
115		2016	0.1543993	5.6977440	0.2216139	0.3788477
116	KBLI	2013	0.0549956	0.6417725	0.5079487	0.4359820
117		2014	0.0524022	0.5920826	0.4215699	0.2287230
118		2015	0.0743466	0.4641606	0.5104705	0.1389338

119		2016	0.1786549	0.8370230	0.4200842	0.0838989
120	KBLM	2016	0.0332425	0.8382834	0.9930792	0.1581547
121	KIAS	2013	0.0331851	1.1299404	0.1092845	0.0475447
122		2014	0.0392084	0.9455454	0.1002088	0.2443960
123	LION	2012	0.1969419	1.4548780	0.1658493	0.1827822
124		2013	0.1298947	1.2519699	0.1660427	0.3212780
125		2014	0.0816554	1.0895760	0.3516468	0.4246063
126		2015	0.0719795	0.1201427	0.4063591	0.4521299
127		2016	0.0617448	0.1160570	0.4573066	0.4913495
128	LMSH	2012	0.3211455	1.0335791	0.3180975	0.0232544
129		2013	0.1015042	0.6952234	0.2827016	0.1001189
130		2014	0.0529113	0.5340177	0.2066765	0.2593503
131		2015	0.0145343	0.4909225	0.1898000	0.4937146
132		2016	0.0384013	0.4827967	0.3879396	0.0767654
133	MAIN	2012	0.1680227	5.9037966	1.6396236	0.1401192
134		2013	0.1091189	6.2396868	1.5674688	0.2525321
135	MBTO	2012	0.0746900	0.9356528	0.4025449	0.2350456
136	MERK	2012	0.1893261	8.1700455	0.3664093	1.7183116
137		2013	0.2517335	8.2652208	0.3606423	0.4558016
138		2014	0.2098459	6.4729261	0.2942232	0.9310028
139		2015	0.2221556	6.4095514	0.3549909	1.0214285
140		2016	0.2067961	7.0736138	0.2767634	0.2912063
141	MLBI	2012	0.3935643	47.2689349	2.4926103	0.3229717
142		2013	0.6572007	25.6031950	0.8046465	0.1709017
143		2014	0.3562819	45.4654865	3.0286441	0.3154338
144		2015	0.2365273	22.5412274	1.7409104	0.5851494
145		2016	0.4316978	30.1682224	1.7722729	0.2038072
146	MRAT	2012	0.0675154	0.1912070	0.1502080	0.2265574
147	MYOR	2012	0.0896631	4.9975319	1.7062944	0.1338690
148		2013	0.1043805	5.9716600	1.4937012	0.1739558
149		2014	0.0398232	4.5583764	1.5096866	0.5019219
150		2015	0.1102234	5.2512897	1.1836179	0.1144552
151		2016	0.1074625	5.8704802	1.0625529	0.1932088
152	ROTI	2012	0.1237812	10.4788545	0.8075772	0.1943226
153		2013	0.0866935	6.5575881	1.3150030	0.2359596
154		2014	0.0880013	7.3017704	1.2318971	0.0837471
155		2015	0.0999654	5.3874537	1.2770249	0.1034667
156		2016	0.0958260	5.6134951	1.0236613	0.1919321
157	SCCO	2012	0.1141564	1.2730213	1.2734248	0.2058963
158		2013	0.0595689	1.2783391	1.4901139	0.4896600
159		2014	0.0831028	0.9971290	1.0334263	0.2240790

160		2015	0.0897387	0.8302663	0.9224150	0.2584010
161		2016	0.1390215	1.2254948	1.0074516	0.1358107
162	SIDO	2013	0.1375375	3.9993053	0.1241883	0.3702490
163		2014	0.1471586	3.4729352	0.0708782	0.9754500
164		2015	0.1564584	3.1751359	0.0761251	0.8229042
165		2016	0.1608391	2.8282543	0.0832990	0.7668758
166	SIPD	2012	0.0045667	0.3677761	1.5832326	0.6235186
167	SKBM	2014	0.1371999	2.8575245	1.0431395	0.1307666
168		2015	0.0525198	2.5720837	1.2217732	0.2799056
169	SKLT	2012	0.0318831	0.9602319	0.9288039	0.1734942
170		2013	0.0378822	0.8903185	1.1624685	0.1811380
171		2014	0.0497044	1.3511424	1.1619547	0.1676482
172		2015	0.0532119	1.6809138	1.4802629	0.1721103
173		2016	0.0363335	0.7183763	0.9187488	0.2007371
174	SMCB	2012	0.1110070	2.6398506	0.4455258	0.3120098
175		2013	0.0639346	1.9871427	0.6978320	0.6437349
176		2014	0.0388982	1.9116585	0.9632553	1.0310853
177		2015	0.0101103	0.9023331	1.0499240	2.8441531
178	SMGR	2012	0.1853578	5.1756314	0.4632148	0.3983812
179		2013	0.1738810	3.8493442	0.4122601	0.4073855
180		2014	0.1624255	3.8432480	0.3724520	0.4335835
181		2015	0.1186126	2.4641895	0.3903793	0.4919609
182		2016	0.1025402	1.7799764	0.4465340	0.3988034
183	SPMA	2012	0.0239691	0.5550964	1.1351753	0.2992093
184	SQBB	2012	0.3405527	0.2990973	0.2206345	0.7537823
185		2013	0.3549985	0.2804016	0.2136154	0.7748071
186		2014	0.3587831	0.2638101	0.2452669	0.7872918
187		2015	0.3237033	0.2748568	0.3106142	0.9872226
188		2016	0.3447073	0.2742555	0.3506023	0.8976523
189	TCID	2012	0.1191955	2.0164933	0.1502080	0.4947314
190		2013	0.1092453	2.0225800	0.2391919	0.4645356
191		2014	0.0940595	2.7453690	0.4438870	0.4267844
192		2015	0.2615029	1.9346056	0.2141416	0.1440215
193		2016	0.0741657	1.4094840	0.2254104	0.5086853
194	TOTO	2012	0.1549558	3.6676383	0.6953055	0.2099467
195		2013	0.1354716	3.6829725	0.6860686	0.4188072
196		2014	0.1449246	3.1986164	0.6466060	0.1686022
197		2015	0.1169223	4.8087118	0.6355821	0.4341656
198		2016	0.0652986	3.3725611	0.6939984	0.3061141
199	TRIS	2012	0.1212102	1.4017354	0.5099505	0.0450521
200		2013	0.1073370	1.4205810	0.5905014	0.1868367

201		2014	0.0686087	1.2005400	0.6926753	0.2738501
202		2015	0.0652018	0.9526920	0.7446304	0.2233356
203		2016	0.0394137	1.0133942	0.8455020	0.3938732
204	TRST	2012	0.0280848	0.7160129	0.6172515	0.9138683
205		2013	0.0101093	0.4106038	0.9073306	0.8517983
206		2014	0.0092247	0.6057588	0.8514324	0.4666859
207		2015	0.0075399	0.4448213	0.7156339	0.5546315
208		2016	0.0102701	0.4359447	0.7028941	0.4154477
209	TSPC	2012	0.1370987	4.9990217	0.3816789	0.5313487
210		2013	0.1180732	3.7859649	0.3999548	0.5285536
211		2014	0.1044273	3.1582794	0.3741747	0.5761442
212		2015	0.0842071	1.8157123	0.4490488	0.5441985
213		2016	0.0828287	1.9125087	0.4208024	0.4124705
214	ULTJ	2013	0.1156370	6.4500118	0.3952439	0.0888385
215		2014	0.0971384	4.7436279	0.2878400	0.1223196
216	UNVR	2012	0.5421876	40.0884243	2.0201302	0.3522564
217		2013	0.4010001	46.6264129	2.1373028	0.4704047
218		2014	0.4018385	53.5900593	2.1053157	0.4467493
219		2015	0.3720169	58.4812403	2.2584984	0.4459547
220		2016	0.3816307	62.9310722	2.5596889	0.4477229
221	VOKS	2012	0.0865806	1.4195031	1.8157419	0.2713483
222		2013	0.0199878	1.0229192	2.2529456	1.0630110
223	WIIM	2012	0.0640312	2.4316524	0.8394684	0.9317466
224		2013	0.1076656	1.8005998	0.5729143	0.2999316
225		2014	0.0842555	1.5360283	0.5600053	0.0673127
226		2015	0.0976250	0.9568053	0.4227904	0.2162653
227		2016	0.0785222	0.9322476	0.3657988	0.4939006



## LAMPIRAN 3

## Data Setelah Outlier

NO	PERUSAHAAN	TAHUN	ROA	MBVE	DER	DPR
1	AISA	2012	0.06559	1.55405	0.90197	0.07498
2		2013	0.06906	1.77539	1.13038	0.06751
3		2015	0.04125	0.98175	1.28414	0.06654
4	AKPI	2014	0.01558	0.54487	1.14998	0.30003
5		2015	0.00959	0.53721	1.60313	0.17718
6		2016	0.02003	0.54641	1.33556	0.10517
7	ALDO	2014	0.05903	2.53571	1.23817	0.03917
8	ALMI	2012	0.00741	0.34054	2.20058	
9		2013	0.00949	0.28113	3.18668	0.23585
10		2014	0.00061			
11	AMFG	2012	0.11126	1.46604	0.26793	0.10017
12		2013	0.0956	1.10043	0.28205	0.10261
13		2014	0.11705	1.09705	0.2304	0.0757
14		2015	0.07994	0.8385	0.25959	0.10172
15		2016	0.04731	0.80789	0.52945	0.13331
16	ARNA	2012	0.16929	4.97676	0.54985	0.23132
17		2013	0.20938	7.83351	0.47724	0.32148
18		2014	0.2078	7.00157	0.38033	0.44893
19		2015	0.04977	4.1026	0.59912	
20		2016	0.05921	4.02657	0.62771	0.40156
21	ASII	2012	0.12477	3.42569	1.02946	0.11749
22		2013	0.10419	2.59246	1.01524	0.1162
23		2014	0.09374	2.49817	0.96161	0.11711
24		2015	0.06361	1.91967	0.93969	0.16595
25		2016	0.06989	2.39447	0.87165	0.12166
26	AUTO	2012	0.12789	2.60094	0.61923	0.35642
27		2013	0.08385	1.84041	0.32001	0.10022
28		2014	0.06651	1.99702	0.41872	0.12095
29		2015	0.02251	0.76025	0.41364	
30		2016	0.03308	0.93773	0.38682	0.71784
31	BAJA	2014	0.01444			0.40276
32	BATA	2012	0.12078	2.01296	0.48161	0.29339
33		2013	0.06519	3.47232	0.71521	0.44179
34		2014	0.09134	3.34758	0.80579	0.2968
35		2015	0.16286	2.13821	0.45336	0.05641
36		2016	0.05248	1.84329	0.44438	0.56086

37	BRNA	2012	0.07074	1.60024	1.55238	0.22791
38	CEKA	2014	0.03193	0.82432	1.37914	0.72558
39	CPIN	2012	0.2171	7.32012	0.51027	0.2569
40		2013	0.16084	5.56163	0.57998	0.2983
41		2015	0.07424	3.3941	0.96514	0.16106
42		2016	0.09194	3.57907	0.70973	0.21369
43	DLTA	2012	0.28635	6.82595	0.24589	0.82534
44		2013	0.31198	8.99407	0.28155	0.68079
45		2014	0.29041	8.16921	0.29756	0.66705
46		2015	0.18496	4.90033	0.2221	0.50029
47		2016	0.21248	3.95436	0.18316	0.37751
48	DPNS	2013	0.26061	0.69656	0.14745	0.07434
49		2014	0.054	0.49512	0.13891	0.45611
50		2015	0.03592	0.53108	0.13754	0.50379
51		2016	0.0338	0.50311	0.12484	0.16541
52	DVLA	2012	0.13856	2.24919	0.27704	0.23692
53		2013	0.10571	2.69377	0.30103	0.30716
54		2014	0.06546	1.96669	0.2845	0.17299
55		2015	0.0784	1.49561	0.41372	0.41522
56		2016	0.09931	1.82071	0.41848	0.47868
57	FASW	2012	0.00095	3.49676	2.08709	
58		2016	0.09064	3.21657	1.71755	0.03822
59	GGRM	2012	0.09802	4.07154	0.56017	0.4729
60		2013	0.08635	2.74718	0.72592	0.35112
61		2014	0.09329	3.5248	0.75752	0.28334
62		2015	0.10161	2.78428	0.67085	0.23854
63		2016	0.106	3.10759	0.59113	0.74972
64	GJTL	2012	0.08798	1.41532	1.3492	0.03078
65		2013	0.00784	1.02273	1.68166	0.78193
66		2014	0.01682	0.82995	1.68128	0.12913
67	HMSP	2012	0.3789	19.72749	0.97225	0.77124
68		2013		19.32169	0.93603	0.91926
69		2014	0.35873	22.29148	1.10256	
70		2015	0.27264	13.66052	0.18724	0.43774
71		2016	0.30023	13.03579	0.24384	0.81117
72	ICBP	2012	0.12856	3.79429	0.48109	0.43176
73		2013	0.10509	4.48341	0.60319	0.48525
74		2014	0.10163	5.07884	0.65627	0.43761
75		2015	0.11006	4.79481	0.62084	0.44283
76		2016	0.12564	5.40521	0.5622	0.41107
77	IGAR	2012	0.1425	1.62687	0.29052	0.54609

78		2013	0.1113	1.27047	0.39427	0.55506
79		2014	0.1569	1.16243	0.32812	0.17709
80		2016	0.1577	1.35264	0.17583	0.07014
81	IMAS	2012	0.05115	2.56742	2.07924	0.18146
82		2013	0.02784	2.03455	2.35067	0.12911
83	INAI	2013	0.00655	0.75239		
84		2014	0.02458	0.76027		0.11489
85		2015	0.02151			0.38748
86		2016	0.02655			0.40098
87	INCI	2016	0.03708	0.22813	0.10923	0.18124
88	INDF	2012	0.08048	1.50454	0.73957	0.3215
89		2013	0.04375	1.51019	1.03509	0.47543
90		2014	0.05988	1.43755	1.08446	0.24227
91		2015	0.04039	1.05373	1.12959	0.52074
92		2016	0.06409	1.58358	0.87009	0.28007
93	INTP	2012	0.20933	4.25587	0.17181	0.22644
94		2013	0.18838	3.20418	0.15796	0.3305
95		2014	0.18259	3.71317	0.16543	0.6282
96		2015	0.15763	3.44355	0.15807	
97		2016	0.12837	2.16885	0.15348	0.39472
98	JECC	2012	0.04481			0.20875
99		2013	0.01819	2.91832		0.80449
100		2015	0.00181	0.55504	2.69393	
101		2016	0.08343	1.12515	2.37461	0.21145
102	JPFA	2012	0.09803	2.75279	1.30122	0.14853
103		2013	0.04295	2.47956	1.84403	0.33218
104		2014	0.02447	1.91446	1.97362	0.27648
105		2016	0.1128	1.7713	1.05389	0.0735
106	KAEF	2012	0.0991	0.92468	0.44037	0.16695
107		2013	0.08724	2.01733	0.5218	0.14269
108		2014	0.07969	4.49253	0.63885	0.22677
109		2015	0.07817	2.59491	0.73795	0.1855
110		2016	0.05888	6.72425	1.03071	0.18325
111	KLBF	2012	0.18848	7.30188	0.27759	0.54353
112		2013	0.17414	6.89343	0.33119	0.48964
113		2014	0.17071	8.7806	0.2656	0.37569
114		2015	0.15024	5.65675	0.25215	0.43283
115		2016	0.1544	5.69774	0.22161	0.37885
116	KBLI	2013	0.055	0.64177	0.50795	0.43598
117		2014	0.0524	0.59208	0.42157	0.22872
118		2015	0.07435	0.46416	0.51047	0.13893

119		2016	0.17865	0.83702	0.42008	0.0839
120	KBLM	2016	0.03324	0.83828	0.99308	0.15815
121	KIAS	2013	0.03319	1.12994	0.10928	0.04754
122		2014	0.03921	0.94555	0.10021	0.2444
123	LION	2012	0.19694	1.45488	0.16585	0.18278
124		2013	0.12989	1.25197	0.16604	0.32128
125		2014	0.08166	1.08958	0.35165	0.42461
126		2015	0.07198	0.12014	0.40636	0.45213
127		2016	0.06174	0.11606	0.45731	0.49135
128	LMSH	2012	0.32115	1.03358	0.3181	0.02325
129		2013	0.1015	0.69522	0.2827	0.10012
130		2014	0.05291	0.53402	0.20668	0.25935
131		2015	0.01453	0.49092	0.1898	0.49371
132		2016	0.0384	0.4828	0.38794	0.07677
133	MAIN	2012	0.16802	5.9038	1.63962	0.14012
134		2013	0.10912	6.23969	1.56747	0.25253
135	MBTO	2012	0.07469	0.93565	0.40254	0.23505
136	MERK	2012	0.18933	8.17005	0.36641	
137		2013	0.25173	8.26522	0.36064	0.4558
138		2014	0.20985	6.47293	0.29422	0.931
139		2015	0.22216	6.40955	0.35499	
140		2016	0.2068	7.07361	0.27676	0.29121
141	MLBI	2012			2.49261	0.32297
142		2013		25.6032	0.80465	0.1709
143		2014	0.35628		3.02864	0.31543
144		2015	0.23653	22.54123	1.74091	0.58515
145		2016			1.77227	0.20381
146	MRAT	2012	0.06752	0.19121	0.15021	0.22656
147	MYOR	2012	0.08966	4.99753	1.70629	0.13387
148		2013	0.10438	5.97166	1.4937	0.17396
149		2014	0.03982	4.55838	1.50969	0.50192
150		2015	0.11022	5.25129	1.18362	0.11446
151		2016	0.10746	5.87048	1.06255	0.19321
152	ROTI	2012	0.12378	10.47885	0.80758	0.19432
153		2013	0.08669	6.55759	1.315	0.23596
154		2014	0.088	7.30177	1.2319	0.08375
155		2015	0.09997	5.38745	1.27702	0.10347
156		2016	0.09583	5.6135	1.02366	0.19193
157	SCCO	2012	0.11416	1.27302	1.27342	0.2059
158		2013	0.05957	1.27834	1.49011	0.48966
159		2014	0.0831	0.99713	1.03343	0.22408

160		2015	0.08974	0.83027	0.92242	0.2584
161		2016	0.13902	1.22549	1.00745	0.13581
162	SIDO	2013	0.13754	3.99931	0.12419	0.37025
163		2014	0.14716	3.47294	0.07088	0.97545
164		2015	0.15646	3.17514	0.07613	0.8229
165		2016	0.16084	2.82825	0.0833	0.76688
166	SIPD	2012	0.00457	0.36778	1.58323	0.62352
167	SKBM	2014	0.1372	2.85752	1.04314	0.13077
168		2015	0.05252	2.57208	1.22177	0.27991
169	SKLT	2012	0.03188	0.96023	0.9288	0.17349
170		2013	0.03788	0.89032	1.16247	0.18114
171		2014	0.0497	1.35114	1.16195	0.16765
172		2015	0.05321	1.68091	1.48026	0.17211
173		2016	0.03633	0.71838	0.91875	0.20074
174	SMCB	2012	0.11101	2.63985	0.44553	0.31201
175		2013	0.06393	1.98714	0.69783	0.64373
176		2014	0.0389	1.91166	0.96326	
177		2015	0.01011	0.90233	1.04992	
178	SMGR	2012	0.18536	5.17563	0.46321	0.39838
179		2013	0.17388	3.84934	0.41226	0.40739
180		2014	0.16243	3.84325	0.37245	0.43358
181		2015	0.11861	2.46419	0.39038	0.49196
182		2016	0.10254	1.77998	0.44653	0.3988
183	SPMA	2012	0.02397	0.5551	1.13518	0.29921
184	SQBB	2012	0.34055	0.2991	0.22063	0.75378
185		2013	0.355	0.2804	0.21362	0.77481
186		2014	0.35878	0.26381	0.24527	0.78729
187		2015	0.3237	0.27486	0.31061	0.98722
188		2016	0.34471	0.27426	0.3506	0.89765
189	TCID	2012	0.1192	2.01649	0.15021	0.49473
190		2013	0.10925	2.02258	0.23919	0.46454
191		2014	0.09406	2.74537	0.44389	0.42678
192		2015	0.2615	1.93461	0.21414	0.14402
193		2016	0.07417	1.40948	0.22541	0.50869
194	TOTO	2012	0.15496	3.66764	0.69531	0.20995
195		2013	0.13547	3.68297	0.68607	0.41881
196		2014	0.14492	3.19862	0.64661	0.1686
197		2015	0.11692	4.80871	0.63558	0.43417
198		2016	0.0653	3.37256	0.694	0.30611
199	TRIS	2012	0.12121	1.40174	0.50995	0.04505
200		2013	0.10734	1.42058	0.5905	0.18684

201		2014	0.06861	1.20054	0.69268	0.27385
202		2015	0.0652	0.95269	0.74463	0.22334
203		2016	0.03941	1.01339	0.8455	0.39387
204	TRST	2012	0.02808	0.71601	0.61725	0.91387
205		2013	0.01011	0.4106	0.90733	0.8518
206		2014	0.00922	0.60576	0.85143	0.46669
207		2015	0.00754	0.44482	0.71563	0.55463
208		2016	0.01027	0.43594	0.70289	0.41545
209	TSPC	2012	0.1371	4.99902	0.38168	0.53135
210		2013	0.11807	3.78596	0.39995	0.52855
211		2014	0.10443	3.15828	0.37417	0.57614
212		2015	0.08421	1.81571	0.44905	0.5442
213		2016	0.08283	1.91251	0.4208	0.41247
214	ULTJ	2013	0.11564	6.45001	0.39524	0.08884
215		2014	0.09714	4.74363	0.28784	0.12232
216	UNVR	2012			2.02013	0.35226
217		2013			2.1373	0.4704
218		2014			2.10532	0.44675
219		2015	0.37202		2.2585	0.44595
220		2016	0.38163		2.55969	0.44772
221	VOKS	2012	0.08658	1.4195	1.81574	0.27135
222		2013	0.01999	1.02292	2.25295	
223	WIIM	2012	0.06403	2.43165	0.83947	0.93175
224		2013	0.10767	1.8006	0.57291	0.29993
225		2014	0.08426	1.53603	0.56001	0.06731
226		2015	0.09763	0.95681	0.42279	0.21627
227		2016	0.07852	0.93225	0.3658	0.4939

## LAMPIRAN 4

## Data Rasio Kebijakan Dividen (DPR)

No	Perusahaan	Tahun	DPS	EPS	DPR
1	AISA	2012	6.5	86.69309638	0.074977135
2		2013	8	118.4989747	0.067511133
3		2015	7.727272727	116.1219164	0.066544482
4	AKPI	2014	15.30620294	51.01574118	0.300029022
5		2015	7.202920588	40.65399118	0.177176223
6		2016	8.103283824	77.04978971	0.105169448
7	ALDO	2014	1.5	38.2927902	0.039171865
8	ALMI	2012	50	45.28941904	1.104010629
9		2013	20	84.80107892	0.235846056
10		2014	20	3.163901078	6.321310151
11	AMFG	2012	80	798.6382488	0.100170509
12		2013	80	779.6267281	0.102613208
13		2014	80	1056.762673	0.075702901
14		2015	80	786.5115207	0.101714975
15		2016	80	600.1013825	0.133310808
16	ARNA	2012	20	86.45962873	0.231321835
17		2013	10.40863968	32.37759977	0.321476569
18		2014	16	35.64033416	0.448929573
19		2015	12	9.699736139	1.237147055
20		2016	4.998074013	12.44660765	0.401561144
21	ASII	2012	66	561.7589919	0.117488106
22		2013	64	550.7668737	0.116201615
23		2014	64	546.5182348	0.117104967
24		2015	64	385.6627887	0.165948082
25		2016	55	452.0848241	0.121658585
26	AUTO	2012	105	294.5998253	0.35641569
27		2013	22	219.5173467	0.10021987
28		2014	24	198.4360959	0.120945738
29		2015	83.5	66.95412381	1.247122586
30		2016	72	100.3003693	0.717843817
31	BAJA	2014	3.15	7.821029126	0.402760295
32	BATA	2012	1565	5334.107538	0.29339491
33		2013	15.08	34.13359923	0.441793433
34		2014	16.16	54.44726154	0.296800969
35		2015	5.62	99.63034308	0.056408518
36		2016	18.22	32.48589462	0.560858804
37	BRNA	2012	18	78.98013043	0.227905423

38	CEKA	2014	100	137.8198822	0.725584715
39	CPIN	2012	42	163.4877424	0.256899994
40		2013	46	154.2072204	0.29829991
41		2015	18	111.7574094	0.161063146
42		2016	29	135.7117941	0.213688134
43	DLTA	2012	11000	13327.83767	0.825340184
44		2013	11500.00003	16892.21286	0.680787066
45		2014	12000	17989.7693	0.667045797
46		2015	120	239.8589	0.500294131
47		2016	120	317.8747158	0.377507219
48	DPNS	2013	15	201.7734425	0.074340804
49		2014	20	43.84945003	0.456106063
50		2015	15	29.7743412	0.503789484
51		2016	5	30.22798464	0.165409638
52	DVLA	2012	31.5	132.9545438	0.23692308
53		2013	34.5	112.3182795	0.307162825
54		2014	12.5	72.25846071	0.172990123
55		2015	40	96.3343125	0.415220693
56		2016	65	135.78875	0.478684722
57	FASW	2012	24	2.135875871	11.23660805
58		2016	12	313.9821148	0.038218737
59	GGRM	2012	1000	2114.617938	0.472898665
60		2013	799.9997921	2278.446724	0.351116304
61		2014	799.9997921	2823.502355	0.283335975
62		2015	799.9997921	3353.710433	0.238541701
63		2016	2600.000104	3467.971319	0.74971788
64	GJTL	2012	10	324.9101814	0.030777737
65		2013	27.00011478	34.52995868	0.781933018
66		2014	10	77.44146006	0.129129797
67	HMSP	2012	1750	2269.061373	0.771244013
68		2013	2269	2468.283368	0.919262363
69		2014	2430	2322.857175	1.046125447
70		2015	975	2227.364025	0.437737159
71		2016	2225	2742.959078	0.81116777
72	ICBP	2012	168.9999612	391.423256	0.431757589
73		2013	185.9999239	383.3060594	0.485251718
74		2014	190.0001269	434.1795528	0.437607266
75		2015	222.0000364	501.3155652	0.442834916
76		2016	127.9999808	311.3813794	0.411071404
77	IGAR	2012	23.14772619	42.38828702	0.546087795
78		2013	20	36.031942	0.55506306



79		2014	10	56.46844338	0.17709006
80		2016	5	71.28709011	0.070138927
81	IMAS	2012	59	325.1357555	0.181462663
82		2013	29	224.6210577	0.129106328
83	INAI	2013	50	31.68901977	1.577833596
84		2014	8	69.62973724	0.114893439
85		2015	35	90.32725116	0.387479964
86		2016	45	112.2253006	0.4009791
87	INCI	2016	10	55.17610175	0.181237885
88	INDF	2012	175.0000413	544.3295949	0.321496466
89		2013	185.000125	389.1194807	0.475432699
90		2014	142.0000498	586.1131005	0.242274144
91		2015	220.0000194	422.4738969	0.520742278
92		2016	168.0000396	599.8462603	0.28007183
93	INTP	2012	293	1293.965822	0.226435656
94		2013	450	1361.580691	0.330498224
95		2014	900	1432.675102	0.628195464
96		2015	1350	1183.47916	1.140704497
97		2016	415	1051.365227	0.394724868
98	JECC	2012	43.86243386	210.1241402	0.208745334
99		2013	120	149.1636971	0.804485289
100		2015	60	16.3007209	3.680818804
101		2016	185.1922685	875.8145569	0.211451462
102	JPFA	2012	74.85749121	503.9982603	0.148527281
103		2013	19.96187258	60.09433171	0.332175631
104		2014	9.980936292	36.10010534	0.276479423
105		2016	13.98735196	190.3162561	0.073495309
106	KAEF	2012	6.185307435	37.04789294	0.166954365
107		2013	5.540150791	38.82649081	0.14268997
108		2014	9.657416018	42.58751726	0.226766354
109		2015	8.448890141	45.54780448	0.185495003
110		2016	8.961073684	48.90132295	0.183248083
111	KLBF	2012	19	34.95660353	0.543531067
112		2013	20.58280228	42.03620942	0.489644584
113		2014	17	45.24981453	0.375692148
114		2015	19	43.89736366	0.432827815
115		2016	19	50.15208127	0.378847687
116	KBLI	2013	8	18.34938026	0.435982027
117		2014	4	17.48840132	0.228723022
118		2015	4	28.7906988	0.138933759
119		2016	7	83.43379654	0.083898855

120	KBLM	2016	3	18.96877046	0.158154689
121	CIAS	2013	240	5047.880064	0.047544711
122		2014	1510	6178.497241	0.244395998
123	LION	2012	300	1641.297325	0.182782239
124		2013	400	1245.027507	0.321278042
125		2014	400	942.0491791	0.424606283
126		2015	400	884.701582	0.452129857
127		2016	400	814.0844558	0.491349512
128	LMSH	2012	100	4300.261982	0.023254397
129		2013	150	1498.218666	0.100118897
130		2014	200	771.1578579	0.259350272
131		2015	10	20.2546187	0.493714552
132		2016	5	65.13348761	0.076765427
133	MAIN	2012	25	178.4194867	0.140119224
134		2013	36	142.5561327	0.252532103
135	MBTO	2012	10	42.54493348	0.235045614
136	MERK	2012	8270	4812.864063	1.718311569
137		2013	3570	7832.355223	0.455801595
138		2014	6250	6713.191652	0.931002767
139		2015	325	318.1818348	1.021428518
140		2016	100	343.3992121	0.291206259
141	MLBI	2012	6950.02373	21518.98434	0.322971736
142		2013	9500	55587.5178	0.170901677
143		2014	119	377.258187	0.315433844
144		2015	138	235.8372093	0.585149394
145		2016	95	466.1267205	0.203807239
146	MRAT	2012	16.27794073	71.84908384	0.226557388
147	MYOR	2012	130	971.0982806	0.133869046
148		2013	197.1428596	1133.292914	0.173955786
149		2014	230	458.238598	0.501921927
150		2015	160	1397.926919	0.114455196
151		2016	12	62.10898419	0.193208763
152	ROTI	2012	28.62927542	147.3285669	0.194322636
153		2013	7.366	31.21720948	0.235959592
154		2014	3.12	37.25503202	0.083747076
155		2015	5.53	53.44713352	0.103466728
156		2016	10.60853274	55.27230804	0.191932147
157	SCCO	2012	170	825.6583396	0.205896303
158		2013	250	510.5583156	0.48966003
159		2014	150	669.4066774	0.224079032
160		2015	200	773.9907314	0.258401027

161		2016	225	1656.717568	0.135810717
162	SIDO	2013	10.02	27.06286667	0.370249025
163		2014	27	27.67953333	0.975449971
164		2015	24	29.165	0.822904166
165		2016	24.56686667	32.035	0.766875813
166	SIPD	2012	1	1.603801462	0.623518574
167	SKBM	2014	12.44315305	95.15542379	0.130766619
168		2015	12	42.87159012	0.279905643
169	SKLT	2012	2	11.52776444	0.173494177
170		2013	3	16.56195661	0.181138018
171		2014	4	23.85948845	0.167648188
172		2015	5	29.05112969	0.172110347
173		2016	6	29.88983717	0.200737126
174	SMCB	2012	55.00006525	176.276736	0.312009778
175		2013	80	124.2747524	0.643734938
176		2014	90	87.28666693	1.03108531
177		2015	64.99993475	22.85388038	2.8441531
178	SMGR	2012	330.89	830.5864006	0.398381192
179		2013	367.7410392	902.6857401	0.407385453
180		2014	407.4185254	939.6541323	0.433583498
181		2015	375.3405432	762.9479523	0.491960876
182		2016	304.911416	764.5657138	0.398803413
183	SPMA	2012	8	26.73713364	0.299209336
184	SQBB	2012	11000	14593.07359	0.753782261
185		2013	12500	16133.04877	0.774807055
186		2014	14000	17782.47831	0.787291836
187		2015	16000	16207.08481	0.987222575
188		2016	16000	17824.27395	0.897652271
189	TCID	2012	370	747.8805623	0.494731403
190		2013	370	796.4943579	0.46453562
191		2014	370	866.9482451	0.426784415
192		2015	390	2707.929097	0.144021496
193		2016	410	805.9993174	0.508685294
194	TOTO	2012	100	476.311457	0.209946661
195		2013	200	477.5466593	0.418807243
196		2014	50	296.5559481	0.16860225
197		2015	120	276.3922293	0.434165607
198		2016	5	16.33377749	0.306114125
199	TRIS	2012	2	44.39303456	0.045052113
200		2013	8.981307287	48.0703507	0.186836733
201		2014	9.430598076	34.43708407	0.273850076

202		2015	8	35.82053413	0.223335587
203		2016	9.499035871	24.1169869	0.393873244
204	TRST	2012	20	21.88499243	0.913868262
205		2013	10	11.73986907	0.851798256
206		2014	5	10.71384514	0.466685857
207		2015	5	9.014994089	0.554631534
208		2016	5	12.03520902	0.415447708
209	TSPC	2012	75	141.150243	0.531348713
210		2013	75	141.8966908	0.528553552
211		2014	75	130.1757369	0.576144232
212		2015	64	117.6041448	0.544198507
213		2016	50	121.2207858	0.412470515
214	ULTJ	2013	10	112.5638578	0.088838462
215		2014	12	98.10368373	0.122319566
216	UNVR	2012	300	851.6522936	0.352256434
217		2013	330	701.5235911	0.470404708
218		2014	336.0001311	752.1	0.446749277
219		2015	342.0235911	766.9469201	0.44595471
220		2016	375	837.5716907	0.447722869
221	VOKS	2012	48.00000005	176.8944105	0.271348314
222		2013	50	47.03620267	1.063010982
223	WIIM	2012	34.30000299	36.81258608	0.931746629
224		2013	18.9	63.01436324	0.299931619
225		2014	3.6	53.48170171	0.067312742
226		2015	13.5	62.42332948	0.216265299
227		2016	25	50.61747468	0.493900578

## LAMPIRAN 5

## Data Dividen Per share (DPS)

No	Perusahaan	Tahun	Dividen	jumlah saham beredar	Dividen pershare
1	AISA	2012	19,019,000,000	2,926,000,000	6.5
2		2013	23,408,000,000	2,926,000,000	8
3		2015	24,871,000,000	3,218,600,000	7.727272727
4	AKPI	2014	10,408,218,000	680,000,000	15.30620294
5		2015	4,897,986,000	680,000,000	7.202920588
6		2016	5,510,233,000	680,000,000	8.103283824
7	ALDO	2014	825,000,000	550,000,000	1.5
8	ALMI	2012	15,400,000,000	308,000,000	50
9		2013	6,160,000,000	308,000,000	20
10		2014	12,320,000,000	616,000,000	20
11	AMFG	2012	34,720,000,000	434,000,000	80
12		2013	34,720,000,000	434,000,000	80
13		2014	34,720,000,000	434,000,000	80
14		2015	34,720,000,000	434,000,000	80
15		2016	34,720,000,000	434,000,000	80
16	ARNA	2012	36,707,154,880	1,835,357,744	20
17		2013	76,414,309,760	7,341,430,976	10.40863968
18		2014	117,462,895,616	7,341,430,976	16
19		2015	88,097,171,712	7,341,430,976	12
20		2016	36,693,015,380	7,341,430,976	4.998074013
21	ASII	2012	2,671,914,507,240	40,483,553,140	66
22		2013	2,590,947,400,960	40,483,553,140	64
23		2014	2,590,947,400,960	40,483,553,140	64
24		2015	2,590,947,400,960	40,483,553,140	64
25		2016	2,226,595,422,700	40,483,553,140	55
26	AUTO	2012	404,857,572,000	3,855,786,400	105
27		2013	106,034,126,000	4,819,733,000	22
28		2014	115,673,592,000	4,819,733,000	24
29		2015	402,447,705,500	4,819,733,000	83.5
30		2016	347,020,776,000	4,819,733,000	72
31	BAJA	2014	5,670,000,000	1,800,000,000	3.15
32	BATA	2012	20,345,000,000	13,000,000	1565
33		2013	19,604,000,000	1,300,000,000	15.08
34		2014	21,008,000,000	1,300,000,000	16.16
35		2015	7,306,000,000	1,300,000,000	5.62
36		2016	23,686,000,000	1,300,000,000	18.22

37	BRNA	2012	12,420,000,000	690,000,000	18
38	CEKA	2014	29,750,000,000	297,500,000	100
39	CPIN	2012	688,716,000,000	16,398,000,000	42
40		2013	754,308,000,000	16,398,000,000	46
41		2015	295,164,000,000	16,398,000,000	18
42		2016	475,542,000,000	16,398,000,000	29
43	DLTA	2012	176,144,991,000	16,013,181	11000
44		2013	184,151,582,000	16,013,181	11500.00003
45		2014	192,158,172,000	16,013,181	12000
46		2015	96,079,086,000	800,659,050	120
47		2016	96,079,086,000	800,659,050	120
48	DPNS	2013	4,966,949,280	331,129,952	15
49		2014	6,622,599,040	331,129,952	20
50		2015	4,966,949,280	331,129,952	15
51		2016	1,655,649,760	331,129,952	5
52	DVLA	2012	35,280,000,000	1,120,000,000	31.5
53		2013	38,640,000,000	1,120,000,000	34.5
54		2014	14,000,000,000	1,120,000,000	12.5
55		2015	44,800,000,000	1,120,000,000	40
56		2016	72,800,000,000	1,120,000,000	65
57	FASW	2012	59,469,330,888	2,477,888,787	24
58		2016	29,734,665,444	2,477,888,787	12
59	GGRM	2012	1,924,088,000,000	1,924,088,000	1000
60		2013	1,539,270,000,000	1,924,088,000	799.9997921
61		2014	1,539,270,000,000	1,924,088,000	799.9997921
62		2015	1,539,270,000,000	1,924,088,000	799.9997921
63		2016	5,002,629,000,000	1,924,088,000	2600.000104
64	GJTL	2012	34,848,000,000	3,484,800,000	10
65		2013	94,090,000,000	3,484,800,000	27.00011478
66		2014	34,848,000,000	3,484,800,000	10
67	HMSP	2012	7,670,250,000,000	4,383,000,000	1,750
68		2013	9,945,027,000,000	4,383,000,000	2,269
69		2014	10,650,690,000,000	4,383,000,000	2,430
70		2015	4,536,404,999,100	4,652,723,076	975
71		2016	10,352,308,844,100	4,652,723,076	2,225
72	ICBP	2012	985,431,000,000	5,830,954,000	168.9999612
73		2013	1,084,557,000,000	5,830,954,000	185.9999239
74		2014	1,107,882,000,000	5,830,954,000	190.0001269
75		2015	1,294,472,000,000	5,830,954,000	222.0000364
76		2016	1,492,724,000,000	11,661,908,000	127.9999808
77	IGAR	2012	24,305,112,500	1,050,000,000	23.14772619

78		2013	19,444,090,000	972,204,500	20
79		2014	9,722,045,000	972,204,500	10
80		2016	4,861,022,500	972,204,500	5
81	IMAS	2012	163,151,426,308	2,765,278,412	59
82		2013	80,193,073,948	2,765,278,412	29
83	INAI	2013	7,920,000,000	158,400,000	50
84		2014	2,534,400,000	316,800,000	8
85		2015	11,088,000,000	316,800,000	35
86		2016	14,256,000,000	316,800,000	45
87	INCI	2016	1,810,355,560	181,035,556	10
88	INDF	2012	1,536,575,000,000	8,780,426,500	175.0000413
89		2013	1,624,380,000,000	8,780,426,500	185.000125
90		2014	1,246,821,000,000	8,780,426,500	142.0000498
91		2015	1,931,694,000,000	8,780,426,500	220.0000194
92		2016	1,475,112,000,000	8,780,426,500	168.0000396
93	INTP	2012	1.0786E+12	3,681,231,699	293
94		2013	1.65655E+12	3,681,231,699	450
95		2014	3.31311E+12	3,681,231,699	900
96		2015	4.96966E+12	3,681,231,699	1,350
97		2016	1.52771E+12	3,681,231,699	415
98	JECC	2012	6,632,000,000	151,200,000	43.86243386
99		2013	18,144,000,000	151,200,000	120
100		2015	9,072,000,000	151,200,000	60
101		2016	28,001,071,000	151,200,000	185.1922685
102	JPFA	2012	159,604,000,000	2,132,104,582	74.85749121
103		2013	212,804,000,000	10,660,522,910	19.96187258
104		2014	106,402,000,000	10,660,522,910	9.980936292
105		2016	159,603,000,000	11,410,522,910	13.98735196
106	KAEF	2012	34,353,197,492	5,554,000,000	6.185307435
107		2013	30,769,997,495	5,554,000,000	5.540150791
108		2014	53,637,288,565	5,554,000,000	9.657416018
109		2015	46,925,135,841	5,554,000,000	8.448890141
110		2016	49,769,803,239	5,554,000,000	8.961073684
111	KLBF	2012	964,821,370,090	50,780,072,110	19
112		2013	964,821,370,090	46,875,122,110	20.58280228
113		2014	796,877,075,870	46,875,122,110	17
114		2015	890,627,320,090	46,875,122,110	19
115		2016	890,627,320,090	46,875,122,110	19
116	KBLI	2013	32,057,880,856	4,007,235,107	8
117		2014	16,028,940,428	4,007,235,107	4
118		2015	16,028,940,428	4,007,235,107	4

119		2016	28,050,645,749	4,007,235,107	7
120	KBLM	2016	3,360,000,000	1,120,000,000	3
121	KIAS	2013	3,582,984,000,000	14,929,100,000	240
122		2014	22,542,941,000,000	14,929,100,000	1510
123	LION	2012	15,604,800,000	52,016,000	300
124		2013	20,806,400,000	52,016,000	400
125		2014	20,806,400,000	52,016,000	400
126		2015	20,806,400,000	52,016,000	400
127		2016	20,806,400,000	52,016,000	400
128	LMSH	2012	960,000,000	9,600,000	100
129		2013	1,440,000,000	9,600,000	150
130		2014	1,920,000,000	9,600,000	200
131		2015	960,000,000	96,000,000	10
132		2016	480,000,000	96,000,000	5
133	MAIN	2012	42,375,000,000	1,695,000,000	25
134		2013	61,020,000,000	1,695,000,000	36
135	MBTO	2012	10,700,000,000	1,070,000,000	10
136	MERK	2012	185,248,000,000	22,400,000	8270
137		2013	79,968,000,000	22,400,000	3570
138		2014	140,000,000,000	22,400,000	6250
139		2015	145,600,000,000	448,000,000	325
140		2016	44,800,000,000	448,000,000	100
141	MLBI	2012	1.46437E+11	21,070,000	6,950
142		2013	2.00165E+11	21,070,000	9,500
143		2014	250,733,000,000	2,107,000,000	119
144		2015	290,766,000,000	2,107,000,000	138
145		2016	200,165,000,000	2,107,000,000	95
146	MRAT	2012	6,966,958,633	428,000,000	16.27794073
147	MYOR	2012	99,655,920,000	766,584,000	130
148		2013	176,314,320,000	894,347,989	197.1428596
149		2014	205,700,037,470	894,347,989	230
150		2015	143,095,678,240	894,347,989	160
151		2016	268,304,396,700	22,358,699,725	12
152	ROTI	2012	28,983,133,261	1,012,360,000	28.62927542
153		2013	37,285,218,800	5,061,800,000	7.366
154		2014	15,792,816,001	5,061,800,000	3.12
155		2015	27,991,754,000	5,061,800,000	5.53
156		2016	53,698,271,000	5,061,800,000	10.60853274
157	SCCO	2012	34,949,178,000	205,583,400	170
158		2013	51,395,850,000	205,583,400	250
159		2014	30,837,510,000	205,583,400	150



160		2015	41,116,680,000	205,583,400	200
161		2016	46,256,265,000	205,583,400	225
162	SIDO	2013	150,300,000,000	15,000,000,000	10.02
163		2014	405,000,000,000	15,000,000,000	27
164		2015	360,000,000,000	15,000,000,000	24
165		2016	368,503,000,000	15,000,000,000	24.56686667
166	SIPD	2012	9,391,108,493	9,391,108,493	1
167	SKBM	2014	11,653,397,253	936,530,894	12.44315305
168		2015	11,238,370,730	936,530,894	12
169	SKLT	2012	1,381,481,000	690,740,500	2
170		2013	2,072,221,500	690,740,500	3
171		2014	2,762,962,000	690,740,500	4
172		2015	3,453,702,500	690,740,500	5
173		2016	4,144,443,000	690,740,500	6
174	SMCB	2012	421,460,000,000	7,662,900,000	55.00006525
175		2013	613,032,000,000	7,662,900,000	80
176		2014	689,661,000,000	7,662,900,000	90
177		2015	498,088,000,000	7,662,900,000	64.99993475
178	SMGR	2012	1.96268E+12	5,931,520,000	330.89
179		2013	2,181,263,329,000	5,931,520,000	367.7410392
180		2014	2,416,611,132,000	5,931,520,000	407.4185254
181		2015	2,226,339,939,000	5,931,520,000	375.3405432
182		2016	1,808,588,162,000	5,931,520,000	304.911416
183	SPMA	2012	11936373264	1,492,046,658	8
184	SQBB	2012	101,948,000,000	9,268,000	11,000
185		2013	115,850,000,000	9,268,000	12,500
186		2014	129,752,000,000	9,268,000	14,000
187		2015	148,288,000,000	9,268,000	16,000
188		2016	148,288,000,000	9,268,000	16,000
189	TCID	2012	74,394,666,790	201,066,667	370
190		2013	74,394,666,790	201,066,667	370
191		2014	74,394,666,790	201,066,667	370
192		2015	78,416,000,130	201,066,667	390
193		2016	82,437,333,470	201,066,667	410
194	TOTO	2012	49,536,000,000	495,360,000	100
195		2013	99,072,000,000	495,360,000	200
196		2014	49,536,000,000	990,720,000	50
197		2015	123,840,000,000	1,032,000,000	120
198		2016	51,600,000,000	10,320,000,000	5
199	TRIS	2012	2,000,000,000	1,000,000,000	2
200		2013	9,004,640,723	1,002,598,000	8.981307287

201		2014	9,843,309,575	1,043,763,025	9.430598076
202		2015	8,363,570,600	1,045,446,325	8
203		2016	9,930,732,142	1,045,446,325	9.499035871
204	TRST	2012	56,160,000,000	2,808,000,000	20
205		2013	28,080,000,000	2,808,000,000	10
206		2014	14,040,000,000	2,808,000,000	5
207		2015	14,040,000,000	2,808,000,000	5
208		2016	14,040,000,000	2,808,000,000	5
209	TSPC	2012	337,500,000,000	4,500,000,000	75
210		2013	337,500,000,000	4,500,000,000	75
211		2014	337,500,000,000	4,500,000,000	75
212		2015	288,000,000,000	4,500,000,000	64
213		2016	225,000,000,000	4,500,000,000	50
214	ULTJ	2013	28,883,820,000	2,888,382,000	10
215		2014	34,660,584,000	2,888,382,000	12
216	UNVR	2012	2,289,000,000,000	7,630,000,000	300
217		2013	2,517,900,000,000	7,630,000,000	330
218		2014	2,563,681,000,000	7,630,000,000	336.0001311
219		2015	2,609,640,000,000	7,630,000,000	342.0235911
220		2016	2,861,250,000,000	7,630,000,000	375
221	VOKS	2012	39,893,784,953	831,120,519	48.00000005
222		2013	41,556,025,950	831,120,519	50
223	WIIM	2012	72,025,676,240	2,099,873,760	34.30000299
224		2013	39,687,614,064	2,099,873,760	18.9
225		2014	7,559,545,536	2,099,873,760	3.6
226		2015	28,348,295,760	2,099,873,760	13.5
227		2016	52,496,844,000	2,099,873,760	25

## LAMPIRAN 6

Data *Earning Pershare* (EPS)

No	Perusahaan	Tahun	Lababersih	Saham Beredar	EPS
1	AISA	2012	253,664,000,000	2,926,000,000	86.69309638
2		2013	346,728,000,000	2,926,000,000	118.4989747
3		2015	373,750,000,000	3,218,600,000	116.1219164
4	AKPI	2014	34,690,704,000	680,000,000	51.01574118
5		2015	27,644,714,000	680,000,000	40.65399118
6		2016	52,393,857,000	680,000,000	77.04978971
7	ALDO	2014	21,061,034,612	550,000,000	38.2927902
8	ALMI	2012	13,949,141,063	308,000,000	45.28941904
9		2013	26,118,732,307	308,000,000	84.80107892
10		2014	1,948,963,064	616,000,000	3.163901078
11	AMFG	2012	346,609,000,000	434,000,000	798.6382488
12		2013	338,358,000,000	434,000,000	779.6267281
13		2014	458,635,000,000	434,000,000	1056.762673
14		2015	341,346,000,000	434,000,000	786.5115207
15		2016	260,444,000,000	434,000,000	600.1013825
16	ARNA	2012	158,684,349,130	1,835,357,744	86.45962873
17		2013	237,697,913,883	7,341,430,976	32.37759977
18		2014	261,651,053,219	7,341,430,976	35.64033416
19		2015	71,209,943,348	7,341,430,976	9.699736139
20		2016	91,375,910,975	7,341,430,976	12.44660765
21	ASII	2012	22,742,000,000,000	40,483,553,140	561.7589919
22		2013	22,297,000,000,000	40,483,553,140	550.7668737
23		2014	22,125,000,000,000	40,483,553,140	546.5182348
24		2015	15,613,000,000,000	40,483,553,140	385.6627887
25		2016	18,302,000,000,000	40,483,553,140	452.0848241
26	AUTO	2012	1,135,914,000,000	3,855,786,400	294.5998253
27		2013	1,058,015,000,000	4,819,733,000	219.5173467
28		2014	956,409,000,000	4,819,733,000	198.4360959
29		2015	322,701,000,000	4,819,733,000	66.95412381
30		2016	483,421,000,000	4,819,733,000	100.3003693
31	BAJA	2014	14,077,852,427	1,800,000,000	7.821029126
32	BATA	2012	69,343,398,000	13,000,000	5334.107538
33		2013	44,373,679,000	1,300,000,000	34.13359923
34		2014	70,781,440,000	1,300,000,000	54.44726154
35		2015	129,519,446,000	1,300,000,000	99.63034308
36		2016	42,231,663,000	1,300,000,000	32.48589462
37	BRNA	2012	54,496,290,000	690,000,000	78.98013043

38	CEKA	2014	41,001,414,954	297,500,000	137.8198822
39	CPIN	2012	2,680,872,000,000	16,398,000,000	163.4877424
40		2013	2,528,690,000,000	16,398,000,000	154.2072204
41		2015	1,832,598,000,000	16,398,000,000	111.7574094
42		2016	2,225,402,000,000	16,398,000,000	135.7117941
43	DLTA	2012	213,421,077,000	16,013,181	13327.83767
44		2013	270,498,062,000	16,013,181	16892.21286
45		2014	288,073,432,000	16,013,181	17989.7693
46		2015	192,045,199,000	800,659,050	239.8589
47		2016	254,509,268,000	800,659,050	317.8747158
48	DPNS	2013	66,813,230,321	331,129,952	201.7734425
49		2014	14,519,866,284	331,129,952	43.84945003
50		2015	9,859,176,172	331,129,952	29.7743412
51		2016	10,009,391,103	331,129,952	30.22798464
52	DVLA	2012	148,909,089,000	1,120,000,000	132.9545438
53		2013	125,796,473,000	1,120,000,000	112.3182795
54		2014	80,929,476,000	1,120,000,000	72.25846071
55		2015	107,894,430,000	1,120,000,000	96.3343125
56		2016	152,083,400,000	1,120,000,000	135.78875
57	FASW	2012	5,292,462,870	2,477,888,787	2.135875871
58		2016	778,012,761,625	2,477,888,787	313.9821148
59	GGRM	2012	4,068,711,000,000	1,924,088,000	2114.617938
60		2013	4,383,932,000,000	1,924,088,000	2278.446724
61		2014	5,432,667,000,000	1,924,088,000	2823.502355
62		2015	6,452,834,000,000	1,924,088,000	3353.710433
63		2016	6,672,682,000,000	1,924,088,000	3467.971319
64	GJTL	2012	1,132,247,000,000	3,484,800,000	324.9101814
65		2013	120,330,000,000	3,484,800,000	34.52995868
66		2014	269,868,000,000	3,484,800,000	77.44146006
67	HMSP	2012	9,945,296,000,000	4,383,000,000	2269.061373
68		2013	10,818,486,000,000	4,383,000,000	2468.283368
69		2014	10,181,083,000,000	4,383,000,000	2322.857175
70		2015	10,363,308,000,000	4,652,723,076	2227.364025
71		2016	12,762,229,000,000	4,652,723,076	2742.959078
72	ICBP	2012	2,282,371,000,000	5,830,954,000	391.423256
73		2013	2,235,040,000,000	5,830,954,000	383.3060594
74		2014	2,531,681,000,000	5,830,954,000	434.1795528
75		2015	2,923,148,000,000	5,830,954,000	501.3155652
76		2016	3,631,301,000,000	11,661,908,000	311.3813794
77	IGAR	2012	44,507,701,367	1,050,000,000	42.38828702
78		2013	35,030,416,158	972,204,500	36.031942

79		2014	54,898,874,758	972,204,500	56.46844338
80		2016	69,305,629,795	972,204,500	71.28709011
81	IMAS	2012	899,090,885,530	2,765,278,412	325.1357555
82		2013	621,139,761,829	2,765,278,412	224.6210577
83	INAI	2013	5,019,540,731	158,400,000	31.68901977
84		2014	22,058,700,759	316,800,000	69.62973724
85		2015	28,615,673,167	316,800,000	90.32725116
86		2016	35,552,975,244	316,800,000	112.2253006
87	INCI	2016	9,988,836,259	181,035,556	55.17610175
88	INDF	2012	4,779,446,000,000	8,780,426,500	544.3295949
89		2013	3,416,635,000,000	8,780,426,500	389.1194807
90		2014	5,146,323,000,000	8,780,426,500	586.1131005
91		2015	3,709,501,000,000	8,780,426,500	422.4738969
92		2016	5,266,906,000,000	8,780,426,500	599.8462603
93	INTP	2012	4,763,388,000,000	3,681,231,699	1293.965822
94		2013	5,012,294,000,000	3,681,231,699	1361.580691
95		2014	5,274,009,000,000	3,681,231,699	1432.675102
96		2015	4,356,661,000,000	3,681,231,699	1183.47916
97		2016	3,870,319,000,000	3,681,231,699	1051.365227
98	JECC	2012	31,770,770,000	151,200,000	210.1241402
99		2013	22,553,551,000	151,200,000	149.1636971
100		2015	2,464,669,000	151,200,000	16.3007209
101		2016	132,423,161,000	151,200,000	875.8145569
102	JPFA	2012	1,074,577,000,000	2,132,104,582	503.9982603
103		2013	640,637,000,000	10,660,522,910	60.09433171
104		2014	384,846,000,000	10,660,522,910	36.10010534
105		2016	2,171,608,000,000	11,410,522,910	190.3162561
106	KAEF	2012	205,763,997,378	5,554,000,000	37.04789294
107		2013	215,642,329,977	5,554,000,000	38.82649081
108		2014	236,531,070,864	5,554,000,000	42.58751726
109		2015	252,972,506,074	5,554,000,000	45.54780448
110		2016	271,597,947,663	5,554,000,000	48.90132295
111	KLBF	2012	1,775,098,847,932	50,780,072,110	34.95660353
112		2013	1,970,452,449,686	46,875,122,110	42.03620942
113		2014	2,121,090,581,630	46,875,122,110	45.24981453
114		2015	2,057,694,281,873	46,875,122,110	43.89736366
115		2016	2,350,884,933,551	46,875,122,110	50.15208127
116	KBLI	2013	73,530,280,777	4,007,235,107	18.34938026
117		2014	70,080,135,740	4,007,235,107	17.48840132
118		2015	115,371,098,970	4,007,235,107	28.7906988
119		2016	334,338,838,592	4,007,235,107	83.43379654

120	KBLM	2016	21,245,022,916	1,120,000,000	18.96877046
121	KIAS	2013	75,360,306,268,000	14,929,100,000	5047.880064
122		2014	92,239,403,158,000	14,929,100,000	6178.497241
123	LION	2012	85,373,721,654	52,016,000	1641.297325
124		2013	64,761,350,816	52,016,000	1245.027507
125		2014	49,001,630,102	52,016,000	942.0491791
126		2015	46,018,637,487	52,016,000	884.701582
127		2016	42,345,417,055	52,016,000	814.0844558
128	LMSH	2012	41,282,515,026	9,600,000	4300.261982
129		2013	14,382,899,194	9,600,000	1498.218666
130		2014	7,403,115,436	9,600,000	771.1578579
131		2015	1,944,443,395	96,000,000	20.2546187
132		2016	6,252,814,811	96,000,000	65.13348761
133	MAIN	2012	302,421,030,000	1,695,000,000	178.4194867
134		2013	241,632,645,000	1,695,000,000	142.5561327
135	MBTO	2012	45,523,078,819	1,070,000,000	42.54493348
136	MERK	2012	107,808,155,000	22,400,000	4812.864063
137		2013	175,444,757,000	22,400,000	7832.355223
138		2014	150,375,493,000	22,400,000	6713.191652
139		2015	142,545,462,000	448,000,000	318.1818348
140		2016	153,842,847,000	448,000,000	343.3992121
141	MLBI	2012	453,405,000,000	21,070,000	21518.98434
142		2013	1,171,229,000,000	21,070,000	55587.5178
143		2014	794,883,000,000	2,107,000,000	377.258187
144		2015	496,909,000,000	2,107,000,000	235.8372093
145		2016	982,129,000,000	2,107,000,000	466.1267205
146	MRAT	2012	30,751,407,882	428,000,000	71.84908384
147	MYOR	2012	744,428,404,309	766,584,000	971.0982806
148		2013	1,013,558,238,779	894,347,989	1133.292914
149		2014	409,824,768,594	894,347,989	458.238598
150		2015	1,250,233,128,560	894,347,989	1397.926919
151		2016	1,388,676,127,665	22,358,699,725	62.10898419
152	ROTI	2012	149,149,548,025	1,012,360,000	147.3285669
153		2013	158,015,270,921	5,061,800,000	31.21720948
154		2014	188,577,521,074	5,061,800,000	37.25503202
155		2015	270,538,700,440	5,061,800,000	53.44713352
156		2016	279,777,368,831	5,061,800,000	55.27230804
157	SCCO	2012	169,741,648,691	205,583,400	825.6583396
158		2013	104,962,314,423	205,583,400	510.5583156
159		2014	137,618,900,727	205,583,400	669.4066774
160		2015	159,119,646,125	205,583,400	773.9907314

161		2016	340,593,630,534	205,583,400	1656.717568
162	SIDO	2013	405,943,000,000	15,000,000,000	27.06286667
163		2014	415,193,000,000	15,000,000,000	27.67953333
164		2015	437,475,000,000	15,000,000,000	29.165
165		2016	480,525,000,000	15,000,000,000	32.035
166	SIPD	2012	15,061,473,532	9,391,108,493	1.603801462
167	SKBM	2014	89,115,994,107	936,530,894	95.15542379
168		2015	40,150,568,621	936,530,894	42.87159012
169	SKLT	2012	7,962,693,771	690,740,500	11.52776444
170		2013	11,440,014,188	690,740,500	16.56195661
171		2014	16,480,714,984	690,740,500	23.85948845
172		2015	20,066,791,849	690,740,500	29.05112969
173		2016	20,646,121,074	690,740,500	29.88983717
174	SMCB	2012	1,350,791,000,000	7,662,900,000	176.276736
175		2013	952,305,000,000	7,662,900,000	124.2747524
176		2014	668,869,000,000	7,662,900,000	87.28666693
177		2015	175,127,000,000	7,662,900,000	22.85388038
178	SMGR	2012	4,926,639,847,000	5,931,520,000	830.5864006
179		2013	5,354,298,521,000	5,931,520,000	902.6857401
180		2014	5,573,577,279,000	5,931,520,000	939.6541323
181		2015	4,525,441,038,000	5,931,520,000	762.9479523
182		2016	4,535,036,823,000	5,931,520,000	764.5657138
183	SPMA	2012	39,893,050,885	1,492,046,658	26.73713364
184	SQBB	2012	135,248,606,000	9,268,000	14593.07359
185		2013	149,521,096,000	9,268,000	16133.04877
186		2014	164,808,009,000	9,268,000	17782.47831
187		2015	150,207,262,000	9,268,000	16207.08481
188		2016	165,195,371,000	9,268,000	17824.27395
189	TCID	2012	150,373,851,969	201,066,667	747.8805623
190		2013	160,148,465,833	201,066,667	796.4943579
191		2014	174,314,394,101	201,066,667	866.9482451
192		2015	544,474,278,014	201,066,667	2707.929097
193		2016	162,059,596,347	201,066,667	805.9993174
194	TOTO	2012	235,945,643,357	495,360,000	476.311457
195		2013	236,557,513,162	495,360,000	477.5466593
196		2014	293,803,908,949	990,720,000	296.5559481
197		2015	285,236,780,659	1,032,000,000	276.3922293
198		2016	168,564,583,718	10,320,000,000	16.33377749
199	TRIS	2012	44,393,034,558	1,000,000,000	44.39303456
200		2013	48,195,237,468	1,002,598,000	48.0703507
201		2014	35,944,155,042	1,043,763,025	34.43708407

202		2015	37,448,445,764	1,045,446,325	35.82053413
203		2016	25,213,015,324	1,045,446,325	24.1169869
204	TRST	2012	61,453,058,755	2,808,000,000	21.88499243
205		2013	32,965,552,359	2,808,000,000	11.73986907
206		2014	30,084,477,143	2,808,000,000	10.71384514
207		2015	25,314,103,403	2,808,000,000	9.014994089
208		2016	33,794,866,940	2,808,000,000	12.03520902
209	TSPC	2012	635,176,093,653	4,500,000,000	141.150243
210		2013	638,535,108,795	4,500,000,000	141.8966908
211		2014	585,790,816,012	4,500,000,000	130.1757369
212		2015	529,218,651,807	4,500,000,000	117.6041448
213		2016	545,493,536,262	4,500,000,000	121.2207858
214	ULTJ	2013	325,127,420,664	2,888,382,000	112.5638578
215		2014	283,360,914,211	2,888,382,000	98.10368373
216	UNVR	2012	6,498,107,000,000	7,630,000,000	851.6522936
217		2013	5,352,625,000,000	7,630,000,000	701.5235911
218		2014	5,738,523,000,000	7,630,000,000	752.1
219		2015	5,851,805,000,000	7,630,000,000	766.9469201
220		2016	6,390,672,000,000	7,630,000,000	837.5716907
221	VOKS	2012	147,020,574,291	831,120,519	176.8944105
222		2013	39,092,753,172	831,120,519	47.03620267
223	WIIM	2012	77,301,783,553	2,099,873,760	36.81258608
224		2013	132,322,207,861	2,099,873,760	63.01436324
225		2014	112,304,822,060	2,099,873,760	53.48170171
226		2015	131,081,111,587	2,099,873,760	62.42332948
227		2016	106,290,306,868	2,099,873,760	50.61747468



## LAMPIRAN 7

## Data Rasio Profitabilitas (ROA)

No	Perusahaan	Tahun	Laba bersih	Total Aset	ROA
1	AISA	2012	253,664	3,867,576	0.065587334
2		2013	346,728	5,020,824	0.069057987
3		2015	373,750	9,060,979	0.041248302
4	AKPI	2014	34,690,704	2,227,042,590	0.015577028
5		2015	27,644,714	2,883,143,132	0.009588395
6		2016	52,393,857	2,615,909,190	0.020028928
7	ALDO	2014	21,061,034,612	356,814,265,668	0.059025203
8	ALMI	2012	13,949,141,063	1,881,568,513,922	0.007413571
9		2013	26,118,732,307	2,752,078,229,707	0.009490549
10		2014	1,948,963,064	3,212,438,981,224	0.000606693
11	AMFG	2012	346,609	3,115,421	0.111255911
12		2013	338,358	3,539,393	0.095597748
13		2014	458,635	3,918,391	0.117046767
14		2015	341,346	4,270,275	0.079935367
15		2016	260,444	5,504,890	0.04731139
16	ARNA	2012	158,684,349,130	937,359,770,277	0.169288628
17		2013	237,697,913,883	1,135,244,802,060	0.209380315
18		2014	261,651,053,219	1,259,175,442,875	0.20779555
19		2015	71,209,943,348	1,430,779,475,454	0.049770034
20		2016	91,375,910,975	1,543,216,299,146	0.059211344
21	ASII	2012	22,742	182,274	0.124768206
22		2013	22,297	213,994	0.10419451
23		2014	22,125	236,029	0.093738481
24		2015	15,613	245,435	0.063613584
25		2016	18,302	261,855	0.069893643
26	AUTO	2012	1,135,914	8,881,642	0.127894594
27		2013	1,058,015	12,617,678	0.083851799
28		2014	956,409	14,380,926	0.066505384
29		2015	322,701	14,339,110	0.022504953
30		2016	483,421	14,612,274	0.033083215
31	BAJA	2014	14,077,852,427	974,632,970,453	0.01444426
32	BATA	2012	69,343,398	574,107,994	0.120784589
33		2013	44,373,679	680,685,060	0.065189735
34		2014	70,781,440	774,891,087	0.091343727
35		2015	129,519,446	795,257,974	0.162864693

36		2016	42,231,663	804,742,917	0.052478453
37	BRNA	2012	54,496,290	770,383,930	0.070739131
38	CEKA	2014	41,001,414,954	1,284,150,037,341	0.031928835
39	CPIN	2012	2,680,872	12,348,627	0.217098792
40		2013	2,528,690	15,722,197	0.160835664
41		2015	1,832,598	24,684,915	0.074239591
42		2016	2,225,402	24,204,994	0.091939787
43	DLTA	2012	213,421,077	745,306,835	0.286353307
44		2013	270,498,062	867,040,802	0.311978469
45		2014	288,073,432	991,947,134	0.290412082
46		2015	192,045,199	1,038,321,916	0.184957282
47		2016	254,509,268	1,197,796,650	0.212481199
48	DPNS	2013	66,813,230,321	256,372,669,050	0.260609801
49		2014	14,519,866,284	268,877,322,944	0.054001826
50		2015	9,859,176,172	274,483,110,371	0.035919063
51		2016	10,009,391,103	296,129,565,784	0.033800715
52	DVLA	2012	148,909,089	1,074,691,476	0.138559849
53		2013	125,796,473	1,190,054,288	0.1057065
54		2014	80,929,476	1,236,247,525	0.065463812
55		2015	107,894,430	1,376,278,237	0.078395798
56		2016	152,083,400	1,531,365,558	0.099312277
57	FASW	2012	5,292,462,870	5,578,334,207,456	0.000948753
58		2016	778,012,761,625	8,583,223,835,997	0.09064342
59	GGRM	2012	4,068,711	41,509,325	0.098019204
60		2013	4,383,932	50,770,251	0.086348441
61		2014	5,432,667	58,234,278	0.093289849
62		2015	6,452,834	63,505,413	0.101610771
63		2016	6,672,682	62,951,634	0.105996963
64	GJTL	2012	1,132,247	12,869,793	0.087977095
65		2013	120,330	15,350,754	0.007838703
66		2014	269,868	16,042,897	0.01682165
67	HMSP	2012	9,945,296	26,247,527	0.378904115
68		2013	10,818,486	27,404,594	0.394769067
69		2014	10,181,083	28,380,630	0.358733509
70		2015	10,363,308	38,010,724	0.272641689
71		2016	12,762,229	42,508,277	0.300229271
72	ICBP	2012	2,282,371	17,753,480	0.128559077
73		2013	2,235,040	21,267,470	0.105091955
74		2014	2,531,681	24,910,211	0.101632258
75		2015	2,923,148	26,560,624	0.110055697
76		2016	3,631,301	28,901,948	0.125642085

77	IGAR	2012	44,507,701,367	312,342,760,278	0.142496344
78		2013	35,030,416,158	314,746,644,499	0.111297187
79		2014	54,898,874,758	349,894,783,575	0.156901095
80		2016	69,305,629,795	439,465,673,296	0.157704308
81	IMAS	2012	899,090,885,530	17,577,664,024,361	0.051149623
82		2013	621,139,761,829	22,315,022,507,630	0.02783505
83	INAI	2013	5,019,540,731	765,881,409,376	0.00655394
84		2014	22,058,700,759	897,281,657,710	0.02458392
85		2015	28,615,673,167	1,330,259,296,537	0.02151135
86		2016	35,552,975,244	1,339,032,413,455	0.026551243
87	INCI	2016	9,988,836,259	269,351,381,344	0.037084778
88	INDF	2012	4,779,446	59,389,405	0.080476408
89		2013	3,416,635	78,092,789	0.043750967
90		2014	5,146,323	85,938,885	0.059883521
91		2015	3,709,501	91,831,526	0.040394635
92		2016	5,266,906	82,174,515	0.064094154
93	INTP	2012	4,763,388	22,755,160	0.209332213
94		2013	5,012,294	26,607,241	0.188380825
95		2014	5,274,009	28,884,973	0.1825866
96		2015	4,356,661	27,638,360	0.157630952
97		2016	3,870,319	30,150,580	0.12836632
98	JECC	2012	31,770,770	708,955,186	0.04481351
99		2013	22,553,551	1,239,821,716	0.018190963
100		2015	2,464,669	1,358,464,081	0.001814306
101		2016	132,423,161	1,587,210,576	0.083431375
102	JPFA	2012	1,074,577	10,961,464	0.098032252
103		2013	640,637	14,917,590	0.042945074
104		2014	384,846	15,730,435	0.024465058
105		2016	2,171,608	19,251,026	0.112804793
106	KAEF	2012	205,763,997,378	2,076,347,580,785	0.099099014
107		2013	215,642,329,977	2,471,939,548,890	0.087236086
108		2014	236,531,070,864	2,968,184,626,297	0.0796888
109		2015	252,972,506,074	3,236,224,076,311	0.078169033
110		2016	271,597,947,663	4,612,562,541,064	0.058882225
111	KLBF	2012	1,775,098,847,932	9,417,957,180,958	0.188480242
112		2013	1,970,452,449,686	11,315,061,275,026	0.174144214
113		2014	2,121,090,581,630	12,425,032,367,729	0.170711071
114		2015	2,057,694,281,873	13,696,417,381,439	0.15023595
115		2016	2,350,884,933,551	15,226,009,210,657	0.154399285
116	KBLI	2013	73,530,280,777	1,337,022,291,951	0.054995553
117		2014	70,080,135,740	1,337,351,473,763	0.052402182

118		2015	115,371,098,970	1,551,799,840,976	0.074346637
119		2016	334,338,838,592	1,871,422,416,044	0.178654929
120	KBLM	2016	21,245,022,916	639,091,366,917	0.033242544
121	KIAS	2013	75,360,306,268	2,270,904,910,518	0.033185144
122		2014	92,239,403,158	2,352,542,603,065	0.039208388
123	LION	2012	85,373,721,654	433,497,042,140	0.196941878
124		2013	64,761,350,816	498,567,897,161	0.129894747
125		2014	49,001,630,102	600,102,716,315	0.081655405
126		2015	46,018,637,487	639,330,150,373	0.071979458
127		2016	42,345,417,055	685,812,995,987	0.061744845
128	LMSH	2012	41,282,515,026	128,547,715,366	0.321145459
129		2013	14,382,899,194	141,697,598,705	0.101504184
130		2014	7,403,115,436	139,915,598,255	0.052911295
131		2015	1,944,443,395	133,782,751,041	0.014534336
132		2016	6,252,814,811	162,828,169,250	0.038401309
133	MAIN	2012	302,421,030	1,799,881,575	0.168022738
134		2013	241,632,645	2,214,398,692	0.109118853
135	MBTO	2012	45,523,078,819	609,494,013,942	0.074689952
136	MERK	2012	107,808,155	569,430,951	0.189326124
137		2013	175,444,757	696,946,318	0.25173353
138		2014	150,375,493	716,599,526	0.209845929
139		2015	142,545,462	641,646,818	0.222155644
140		2016	153,842,847	743,934,894	0.206796116
141	MLBI	2012	453,405	1,152,048	0.393564331
142		2013	1,171,229	1,782,148	0.657200749
143		2014	794,883	2,231,051	0.35628186
144		2015	496,909	2,100,853	0.236527258
145		2016	982,129	2,275,038	0.431697844
146	MRAT	2012	30,751,407,882	455,472,778,210	0.067515358
147	MYOR	2012	744,428,404,309	8,302,506,241,903	0.089663095
148		2013	1,013,558,238,779	9,710,223,454,000	0.104380527
149		2014	409,824,768,594	10,291,108,029,334	0.039823192
150		2015	1,250,233,128,560	11,342,715,686,221	0.110223439
151		2016	1,388,676,127,665	12,922,421,859,142	0.107462529
152	ROTI	2012	149,149,548,025	1,204,944,681,223	0.123781241
153		2013	158,015,270,921	1,822,689,047,108	0.086693488
154		2014	188,577,521,074	2,142,894,276,216	0.088001318
155		2015	270,538,700,440	2,706,323,637,034	0.099965391
156		2016	279,777,368,831	2,919,640,858,718	0.095825953
157	SCCO	2012	169,741,648,691	1,486,921,371,360	0.114156439
158		2013	104,962,314,423	1,762,032,300,123	0.059568893

159		2014	137,618,900,727	1,656,007,190,010	0.08310284
160		2015	159,119,646,125	1,773,144,328,632	0.089738688
161		2016	340,593,630,534	2,449,935,491,586	0.139021469
162	SIDO	2013	405,943	2,951,507	0.137537536
163		2014	415,193	2,821,399	0.147158555
164		2015	437,475	2,796,111	0.156458381
165		2016	480,525	2,987,614	0.160839051
166	SIPD	2012	15,061,473,532	3,298,123,574,771	0.00456668
167	SKBM	2014	89,115,994,107	649,534,031,113	0.137199885
168		2015	40,150,568,621	764,484,248,710	0.052519811
169	SKLT	2012	7,962,693,771	249,746,467,756	0.031883109
170		2013	11,440,014,188	301,989,488,699	0.03788216
171		2014	16,480,714,984	331,574,891,637	0.049704352
172		2015	20,066,791,849	377,110,748,359	0.053211933
173		2016	20,646,121,074	568,239,939,951	0.036333456
174	SMCB	2012	1,350,791	12,168,517	0.111007036
175		2013	952,305	14,894,990	0.063934585
176		2014	668,869	17,195,352	0.038898244
177		2015	175,127	17,321,565	0.010110345
178	SMGR	2012	4,926,639,847	26,579,083,786	0.185357776
179		2013	5,354,298,521	30,792,884,092	0.173881034
180		2014	5,573,577,279	34,314,666,027	0.162425514
181		2015	4,525,441,038	38,153,118,932	0.118612611
182		2016	4,535,036,823	44,226,895,982	0.102540247
183	SPMA	2012	39,893,050,885	1,664,353,264,549	0.023969101
184	SQBB	2012	135,248,606	397,144,458	0.340552671
185		2013	149,521,096	421,187,982	0.354998486
186		2014	164,808,009	459,352,720	0.358783135
187		2015	150,207,262	464,027,522	0.323703347
188		2016	165,195,371	479,233,790	0.344707269
189	TCID	2012	150,373,851,969	1,261,572,952,461	0.119195526
190		2013	160,148,465,833	1,465,952,460,752	0.109245334
191		2014	174,314,394,101	1,853,235,343,636	0.094059502
192		2015	544,474,278,014	2,082,096,848,703	0.261502859
193		2016	162,059,596,347	2,185,101,038,101	0.074165722
194	TOTO	2012	235,945,643,357	1,522,663,914,388	0.154955825
195		2013	236,557,513,162	1,746,177,682,568	0.135471616
196		2014	293,803,908,949	2,027,288,693,678	0.144924554
197		2015	285,236,780,659	2,439,540,859,205	0.116922322
198		2016	168,564,583,718	2,581,440,938,262	0.06529864
199	TRIS	2012	44,393,034,558	366,248,271,960	0.121210223

200		2013	48,195,237,468	449,008,821,261	0.10733695
201		2014	35,944,155,042	523,900,642,605	0.068608725
202		2015	37,448,445,764	574,346,433,075	0.065201843
203		2016	25,213,015,324	639,701,164,511	0.03941374
204	TRST	2012	61,453,058,755	2,188,129,039,119	0.028084751
205		2013	32,965,552,359	3,260,919,505,192	0.010109281
206		2014	30,084,477,143	3,261,285,495,052	0.00922473
207		2015	25,314,103,403	3,357,359,499,954	0.007539885
208		2016	33,794,866,940	3,290,596,224,286	0.010270135
209	TSPC	2012	635,176,093,653	4,632,984,970,719	0.137098673
210		2013	638,535,108,795	5,407,957,915,805	0.118073239
211		2014	585,790,816,012	5,609,556,653,195	0.104427293
212		2015	529,218,651,807	6,284,729,099,203	0.084207075
213		2016	545,493,536,262	6,585,807,349,438	0.082828651
214	ULTJ	2013	325,127,420,664	2,811,620,982,142	0.115637002
215		2014	283,360,914,211	2,917,083,567,355	0.097138429
216	UNVR	2012	6,498,107	11,984,979	0.5421876
217		2013	5,352,625	13,348,188	0.401000121
218		2014	5,738,523	14,280,670	0.401838499
219		2015	5,851,805	15,729,945	0.372016876
220		2016	6,390,672	16,745,695	0.381630742
221	VOKS	2012	147,020,574,291	1,698,078,355,471	0.08658056
222		2013	39,092,753,172	1,955,830,321,070	0.019987804
223	WIIM	2012	77,301,783,553	1,207,251,153,900	0.064031236
224		2013	132,322,207,861	1,229,011,260,881	0.107665578
225		2014	112,304,822,060	1,332,907,675,785	0.084255515
226		2015	131,081,111,587	1,342,700,045,391	0.097625015
227		2016	106,290,306,868	1,353,634,132,275	0.078522183

## LAMPIRAN 8

Data Rasio *Investment Opportunity Set* (MBVE)

No	Perusahaan	Tahun	Saham Beredar	Harga Penutup	Total Ekuitas	MBVE
1	AISA	2012	2,926,000,000	1080	2,033,453,000,000	1.554046245
2		2013	2,926,000,000	1,430	2,356,773,000,000	1.775385241
3		2015	3,218,600,000	1,210	3,966,907,000,000	0.981748753
4	AKPI	2014	680,000,000	830	1,035,845,653,000	0.544868821
5		2015	680,000,000	875	1,107,565,893,000	0.537214087
6		2016	680,000,000	900	1,120,035,169,000	0.546411414
7	ALDO	2014	550,000,000	735	159,422,655,622	2.535712371
8	ALMI	2012	308,000,000	650	587,883,021,026	0.34054394
9		2013	308,000,000	600	657,341,556,453	0.281132386
10		2014	616,000,000	268	641,035,778,235	0.257533207
11	AMFG	2012	434,000,000	8,300	2,457,089,000,000	1.466043762
12		2013	434,000,000	7,000	2,760,727,000,000	1.100434777
13		2014	434,000,000	8,050	3,184,642,000,000	1.097046387
14		2015	434,000,000	6,550	3,390,223,000,000	0.838499414
15		2016	434,000,000	6,700	3,599,264,000,000	0.80788739
16	ARNA	2012	1,835,357,744	1,640	604,808,179,406	4.976762555
17		2013	7,341,430,976	820	768,489,883,529	7.833510277
18		2014	7,341,430,976	870	912,230,541,132	7.001568859
19		2015	7,341,430,976	500	894,728,477,056	4.102602725
20		2016	7,341,430,976	520	948,088,201,259	4.026570632
21	ASII	2012	40,483,553,140	7,600	89,814,000,000,000	3.425690915
22		2013	40,483,553,140	6,800	106,188,000,000,000	2.592460178
23		2014	40,483,553,140	7,425	120,324,000,000,000	2.498174779
24		2015	40,483,553,140	6,000	126,533,000,000,000	1.919667745
25		2016	40,483,553,140	8,275	139,906,000,000,000	2.394474878
26	AUTO	2012	3,855,786,400	3,700	5,485,099,000,000	2.600939323
27		2013	4,819,733,000	3,650	9,558,754,000,000	1.840409895
28		2014	4,819,733,000	4,200	10,136,557,000,000	1.997017192
29		2015	4,819,733,000	1,600	10,143,426,000,000	0.760253271
30		2016	4,819,733,000	2,050	10,536,558,000,000	0.937730581
31	BAJA	2014	1,800,000,000	297	188,323,968,614	2.838725224
32	BATA	2012	13,000,000	60,000	387,488,486,000	2.012963038
33		2013	1,300,000,000	1,060	396,853,165,000	3.472317022
34		2014	1,300,000,000	1,105	429,115,605,000	3.347582757
35		2015	1,300,000,000	900	547,187,208,000	2.13820788
36		2016	1,300,000,000	790	557,155,279,000	1.843292236

37	BRNA	2012	690,000,000	700	301,829,932,000	1.600238905
38	CEKA	2014	297,500,000	1,500	541,352,365,829	0.824324466
39	CPIN	2012	16,398,000,000	3,650	8,176,464,000,000	7.320120287
40		2013	16,398,000,000	3,375	9,950,900,000,000	5.561632616
41		2015	16,398,000,000	2,600	12,561,427,000,000	3.394104826
42		2016	16,398,000,000	3,090	14,157,243,000,000	3.579073976
43	DLTA	2012	16,013,181	255,000	598,211,513,000	6.825948793
44		2013	16,013,181	380,000	676,557,993,000	8.994068273
45		2014	16,013,181	390,000	764,473,253,000	8.169207445
46		2015	800,659,050	5,200	849,621,481,000	4.900331681
47		2016	800,659,050	5,000	1,012,374,008,000	3.954363919
48	DPNS	2013	331,129,952	470	223,427,964,789	0.696560422
49		2014	331,129,952	353	236,082,522,272	0.495118707
50		2015	331,129,952	387	241,296,079,044	0.531079046
51		2016	331,129,952	400	263,264,403,585	0.5031139
52	DVLA	2012	1,120,000,000	1,690	841,546,479,000	2.249192466
53		2013	1,120,000,000	2,200	914,702,952,000	2.693770688
54		2014	1,120,000,000	1,690	962,431,483,000	1.966685456
55		2015	1,120,000,000	1,300	973,517,334,000	1.495607679
56		2016	1,120,000,000	1,755	1,079,579,612,000	1.820708707
57	FASW	2012	2,477,888,787	2,550	1,806,989,916,747	3.496763512
58		2016	2,477,888,787	4,100	3,158,442,463,132	3.216567706
59	GGRM	2012	1,924,088,000	56,300	26,605,713,000,000	4.071537357
60		2013	1,924,088,000	42,000	29,416,271,000,000	2.747176758
61		2014	1,924,088,000	60,700	33,134,403,000,000	3.524799937
62		2015	1,924,088,000	55,000	38,007,909,000,000	2.784284713
63		2016	1,924,088,000	63,900	39,564,228,000,000	3.107585549
64	GJTL	2012	3,484,800,000	2,225	5,478,384,000,000	1.415322475
65		2013	3,484,800,000	1,680	5,724,343,000,000	1.022731168
66		2014	3,484,800,000	1,425	5,983,292,000,000	0.829951137
67	HMSP	2012	4,383,000,000	59,900	13,308,420,000,000	19.72748831
68		2013	4,383,000,000	62,400	14,155,035,000,000	19.32169013
69		2014	4,383,000,000	68,650	13,498,114,000,000	22.29148087
70		2015	4,652,723,076	94,000	32,016,060,000,000	13.66051816
71		2016	116,318,076,900	3,830	34,175,014,000,000	13.03578792
72	ICBP	2012	5,830,954,000	7,800	11,986,798,000,000	3.794294456
73		2013	5,830,954,000	10,200	13,265,731,000,000	4.483411491
74		2014	5,830,954,000	13,100	15,039,947,000,000	5.078840863
75		2015	5,830,954,000	13,475	16,386,911,000,000	4.794808805
76		2016	11,661,908,000	8,575	18,500,823,000,000	5.405211492
77	IGAR	2012	1,050,000,000	375	242,028,852,241	1.626872153



78		2013	972,204,500	295	225,742,774,790	1.270474006
79		2014	972,204,500	315	263,451,227,145	1.162433065
80		2016	972,204,500	520	373,749,035,530	1.352635838
81	IMAS	2012	2,765,278,412	5,300	5,708,445,072,505	2.567419919
82		2013	2,765,278,412	4,900	6,659,870,110,697	2.034553827
83	INAI	2013	158,400,000	600	126,317,803,126	0.752388006
84		2014	316,800,000	350	145,842,103,885	0.760274276
85		2015	316,800,000	405	239,820,902,657	0.534999237
86		2016	316,800,000	645	258,016,602,673	0.791949037
87	INCI	2016	181,035,556	306	242,826,462,751	0.228133621
88	INDF	2012	8,780,426,500	5,850	34,140,237,000,000	1.504544184
89		2013	8,780,426,500	6,600	38,373,129,000,000	1.510192586
90		2014	8,780,426,500	6,750	41,228,376,000,000	1.437550654
91		2015	8,780,426,500	5,175	43,121,593,000,000	1.053734428
92		2016	8,780,426,500	7,925	43,941,423,000,000	1.583582762
93	INTP	2012	3,681,231,699	22,450	19,418,738,000,000	4.255871398
94		2013	3,681,231,699	20,000	22,977,687,000,000	3.204179515
95		2014	3,681,231,699	25,000	24,784,973,000,000	3.713168962
96		2015	3,681,231,699	22,325	23,865,950,000,000	3.443546043
97		2016	3,681,231,699	15,400	26,138,703,000,000	2.168851613
98	JECC	2012	151,200,000	1,900	142,875,793,000	2.010697501
99		2013	151,200,000	2,850	147,660,344,000	2.918319085
100		2015	151,200,000	1,350	367,756,259,000	0.555041539
101		2016	151,200,000	3,500	470,338,342,000	1.125147479
102	JPFA	2012	2,132,104,582	6,150	4,763,327,000,000	2.752790892
103		2013	10,660,522,910	1,220	5,245,222,000,000	2.479559102
104		2014	10,660,522,910	950	5,289,994,000,000	1.914462807
105		2016	11,410,522,910	1,455	9,372,964,000,000	1.771297834
106	KAEF	2012	5,554,000,000	240	1,441,533,689,666	0.924681823
107		2013	5,554,000,000	590	1,624,354,688,981	2.017330342
108		2014	5,554,000,000	1,465	1,811,143,949,913	4.492525291
109		2015	5,554,000,000	870	1,862,096,822,470	2.594913402
110		2016	5,554,000,000	2,750	2,271,407,409,194	6.724245038
111	KLBF	2012	50,780,072,110	1,060	7,371,643,614,897	7.301882626
112		2013	46,875,122,110	1,250	8,499,957,965,575	6.8934344
113		2014	46,875,122,110	1,839	9,817,475,678,446	8.780602304
114		2015	46,875,122,110	1,320	10,938,285,985,269	5.656751091
115		2016	46,875,122,110	1,515	12,463,847,141,085	5.697743978
116	KBLI	2013	4,007,235,107	142	886,649,700,731	0.641772489
117		2014	4,007,235,107	139	940,756,718,451	0.592082596
118		2015	4,007,235,107	119	1,027,361,931,042	0.464160646

119		2016	4,007,235,107	276	1,321,345,840,449	0.837023023
120	KBLM	2016	1,120,000,000	240	320,655,277,264	0.838283412
121	KIAS	2013	14,929,100,000	155	2,047,904,910,518	1.129940403
122		2014	14,929,100,000	149	2,352,542,603,065	0.945545427
123	LION	2012	52,016,000	10,400	371,829,387,027	1.454878014
124		2013	52,016,000	12,000	498,567,897,161	1.251969899
125		2014	52,016,000	9,300	443,978,957,043	1.089575964
126		2015	52,016,000	1,050	454,599,496,171	0.120142676
127		2016	52,016,000	1,050	470,603,093,171	0.116057036
128	LMSH	2012	9,600,000	10,500	97,525,195,182	1.033579064
129		2013	9,600,000	8,000	110,468,094,376	0.695223362
130		2014	9,600,000	6,450	115,951,209,812	0.534017714
131		2015	96,000,000	575	112,441,377,144	0.490922482
132		2016	96,000,000	590	117,316,469,122	0.482796665
133	MAIN	2012	1,695,000,000	2,375	681,870,544,000	5.903796601
134		2013	1,695,000,000	3,175	862,483,189,000	6.239686835
135	MBTO	2012	1,070,000,000	380	434,562,913,348	0.935652785
136	MERK	2012	22,400,000	152,000	416,741,865,000	8.170045503
137		2013	22,400,000	189,000	512,218,622,000	8.265220783
138		2014	22,400,000	160,000	553,690,856,000	6.472926112
139		2015	448,000,000	6,775	473,543,282,000	6.409551387
140		2016	448,000,000	9,200	582,672,469,000	7.07361377
141	MLBI	2012	21,070,000	740,000	329,853,000,000	47.26893495
142		2013	21,070,000	1,200,000	987,533,000,000	25.60319503
143		2014	2,107,000,000	11,950	553,797,000,000	45.46548645
144		2015	2,107,000,000	8,200	766,480,000,000	22.54122743
145		2016	2,107,000,000	11,750	820,640,000,000	30.16822236
146	MRAT	2012	428,000,000	490	1,096,821,575,914	0.191207034
147	MYOR	2012	766,584,000	20,000	3,067,850,327,238	4.997531941
148		2013	894,347,989	26,000	3,893,900,119,177	5.971660033
149		2014	894,347,989	20,900	4,100,554,992,789	4.558376367
150		2015	894,347,989	30,500	5,194,459,927,187	5.251289652
151		2016	22,358,699,725	1,645	6,265,255,987,065	5.870480172
152	ROTI	2012	1,012,360,000	6,900	666,607,597,550	10.47885447
153		2013	5,061,800,000	1,020	787,337,649,671	6.557588097
154		2014	5,061,800,000	1,385	960,122,354,744	7.30177041
155		2015	5,061,800,000	1,265	1,188,534,951,872	5.38745368
156		2016	5,061,800,000	1,600	1,442,751,772,026	5.613495098
157	SCCO	2012	205,583,400	4,050	654,044,664,731	1.27302127
158		2013	205,583,400	4,400	707,611,129,154	1.27833908
159		2014	205,583,400	3,950	814,392,519,881	0.997129038

160		2015	205,583,400	3,725	922,352,503,822	0.830266261
161		2016	205,583,400	7,275	1,220,420,673,224	1.225494838
162	SIDO	2013	15,000,000,000	700	2,625,456,000,000	3.999305264
163		2014	15,000,000,000	610	2,634,659,000,000	3.472935207
164		2015	15,000,000,000	550	2,598,314,000,000	3.175135877
165		2016	15,000,000,000	520	2,757,885,000,000	2.82825426
166	SIPD	2012	9,391,108,493	50	1,276,742,767,154	0.36777606
167	SKBM	2014	936,530,894	970	317,909,776,363	2.857524476
168		2015	936,530,894	945	344,087,439,659	2.5720837
169	SKLT	2012	690,740,500	180	129,482,560,948	0.960231935
170		2013	690,740,500	180	139,650,353,636	0.890318476
171		2014	690,740,500	300	153,368,106,620	1.351142389
172		2015	690,740,500	370	152,044,668,111	1.680913827
173		2016	690,740,500	308	296,151,295,872	0.718376306
174	SMCB	2012	7,662,900,000	2,900	8,418,056,000,000	2.639850578
175		2013	7,662,900,000	2,275	8,772,947,000,000	1.98714269
176		2014	7,662,900,000	2,185	8,758,592,000,000	1.911658461
177		2015	7,662,900,000	995	8,449,857,000,000	0.902333081
178	SMGR	2012	5,931,520,000	15,850	18,164,854,648,000	5.175631395
179		2013	5,931,520,000	14,150	21,803,975,875,000	3.849344197
180		2014	5,931,520,000	16,200	25,002,451,936,000	3.843248024
181		2015	5,931,520,000	11,400	27,440,798,401,000	2.464189526
182		2016	5,931,520,000	9,175	30,574,391,457,000	1.779976425
183	SPMA	2012	1,492,046,658	290	779,492,563,307	0.555096419
184	SQBB	2012	9,268,000	10,500	325,359,028,000	0.299097279
185		2013	9,268,000	10,500	347,052,274,000	0.280401563
186		2014	9,268,000	10,500	368,878,943,000	0.263810125
187		2015	9,268,000	10,500	354,053,487,000	0.274856776
188		2016	9,268,000	10,500	354,829,699,000	0.27425551
189	TCID	2012	201,066,667	11,000	1,096,821,575,914	2.01649328
190		2013	201,066,667	11,900	1,182,990,689,957	2.022580023
191		2014	201,066,667	17,525	1,283,504,442,268	2.745369025
192		2015	201,066,667	16,500	1,714,871,478,033	1.934605624
193		2016	201,066,667	12,500	1,783,158,507,325	1.409483973
194	TOTO	2012	495,360,000	6,650	898,164,900,513	3.667638312
195		2013	495,360,000	7,700	1,035,650,413,675	3.682972507
196		2014	990,720,000	3,975	1,231,192,322,624	3.198616437
197		2015	1,032,000,000	6,950	1,491,542,919,106	4.808711776
198		2016	10,320,000,000	498	1,523,874,519,542	3.372561149
199	TRIS	2012	1,000,000,000	340	242,556,471,149	1.401735433
200		2013	1,002,598,000	400	282,306,467,893	1.420580984

201		2014	1,043,763,025	356	309,510,415,383	1.200540009
202		2015	1,045,446,325	300	329,208,076,905	0.952691989
203		2016	1,045,446,325	336	346,627,180,477	1.013394174
204	TRST	2012	2,808,000,000	345	1,352,992,459,388	0.71601286
205		2013	2,808,000,000	250	1,709,677,140,374	0.410603841
206		2014	2,808,000,000	380	1,761,493,183,162	0.605758802
207		2015	2,808,000,000	310	1,956,920,690,054	0.444821297
208		2016	2,808,000,000	300	1,932,355,184,014	0.435944699
209	TSPC	2012	4,500,000,000	3,725	3,353,156,079,810	4.999021698
210		2013	4,500,000,000	3,250	3,862,951,854,240	3.785964866
211		2014	4,500,000,000	2,865	4,082,127,697,809	3.158279445
212		2015	4,500,000,000	1,750	4,337,140,975,120	1.81571225
213		2016	4,500,000,000	1,970	4,635,273,142,692	1.912508654
214	ULTJ	2013	2,888,382,000	4,500	2,015,146,534,086	6.450011838
215		2014	2,888,382,000	3,720	2,265,097,759,730	4.743627949
216	UNVR	2012	7,630,000,000	20,850	3,968,365,000,000	40.08842433
217		2013	7,630,000,000	26,000	4,254,670,000,000	46.62641286
218		2014	7,630,000,000	32,300	4,598,782,000,000	53.59005928
219		2015	7,630,000,000	37,000	4,827,360,000,000	58.48124026
220		2016	7,630,000,000	38,800	4,704,258,000,000	62.93107223
221	VOKS	2012	831,120,519	1,030	603,066,052,747	1.419503105
222		2013	831,120,519	740	601,249,018,963	1.022919231
223	WIIM	2012	2,099,873,760	760	656,304,363,721	2.431652364
224		2013	2,099,873,760	670	781,359,304,525	1.800599815
225		2014	2,099,873,760	625	854,425,098,590	1.536028263
226		2015	2,099,873,760	430	943,708,980,906	0.95680526
227		2016	2,099,873,760	440	991,093,391,804	0.932247619

## LAMPIRAN 9

Data Rasio *Leverage* (DER)

No	Perusahaan	Tahun	Total Utang	Total Ekuitas	DER
1	AISA	2012	1,834,123	2,033,453	0.901974621
2		2013	2,664,051	2,356,773	1.130380822
3		2015	5,094,072	3,966,907	1.284142028
4	AKPI	2014	1,191,196,937	1,035,845,653	1.149975321
5		2015	1,775,577,239	1,107,565,893	1.603134631
6		2016	1,495,874,021	1,120,035,169	1.335559867
7	ALDO	2014	197,391,610,046	159,422,655,622	1.238165362
8	ALMI	2012	1,293,685,492,896	587,883,021,026	2.200583189
9		2013	2,094,736,673,254	657,341,556,453	3.186679212
10		2014	2,571,403,202,989	641,035,778,235	4.011325561
11	AMFG	2012	658,332	2,457,089	0.267931687
12		2013	778,666	2,760,727	0.282051068
13		2014	733,749	3,184,642	0.23040235
14		2015	880,052	3,390,223	0.259585284
15		2016	1,905,626	3,599,264	0.529448798
16	ARNA	2012	332,551,590,871	604,808,179,406	0.549846385
17		2013	366,754,918,531	768,489,883,529	0.477241049
18		2014	346,944,901,743	912,230,541,132	0.3803259
19		2015	536,050,998,398	894,728,477,056	0.599121423
20		2016	595,128,097,887	948,088,201,259	0.627713853
21	ASII	2012	92,460	89,814	1.029460886
22		2013	107,806	106,188	1.015237127
23		2014	115,705	120,324	0.961611981
24		2015	118,902	126,533	0.939691622
25		2016	121,949	139,906	0.871649536
26	AUTO	2012	3,396,543	5,485,099	0.619230938
27		2013	3,058,924	9,558,754	0.320012838
28		2014	4,244,369	10,136,557	0.418718999
29		2015	4,195,684	10,143,426	0.413635787
30		2016	4,075,716	10,536,558	0.386816644
31	BAJA	2014	786,309,001,839	188,323,968,614	4.175299658
32	BATA	2012	186,619,508	387,488,486	0.481613041
33		2013	283,831,895	396,853,165	0.715206328
34		2014	345,775,482	429,115,605	0.805786315
35		2015	248,070,766	547,187,208	0.453356296
36		2016	247,587,638	557,155,279	0.444378161

37	BRNA	2012	468,553,998	301,829,932	1.552377509
38	CEKA	2014	746,598,865,219	541,352,365,829	1.379136607
39	CPIN	2012	4,172,163	8,176,464	0.510264951
40		2013	5,771,297	9,950,900	0.579977389
41		2015	12,123,488	12,561,427	0.965136206
42		2016	10,047,751	14,157,243	0.709725121
43	DLTA	2012	147,095,322	598,211,513	0.245891827
44		2013	190,482,809	676,557,993	0.281546905
45		2014	227,473,881	764,473,253	0.297556363
46		2015	188,700,435	849,621,481	0.222099416
47		2016	185,422,642	1,012,374,008	0.183156265
48	DPNS	2013	32,944,704,261	223,427,964,789	0.147451123
49		2014	32,794,800,672	236,082,522,272	0.138912446
50		2015	33,187,031,327	241,296,079,044	0.137536555
51		2016	32,865,162,199	263,264,403,585	0.124837091
52	DVLA	2012	233,144,997	841,546,479	0.277043518
53		2013	275,351,336	914,702,952	0.301028148
54		2014	273,816,042	962,431,483	0.284504452
55		2015	402,760,903	973,517,334	0.413717238
56		2016	451,785,946	1,079,579,612	0.418483214
57	FASW	2012	3,771,344,290,709	1,806,989,916,747	2.087086517
58		2016	5,424,781,372,865	3,158,442,463,132	1.717549532
59	GGRM	2012	14,903,612	26,605,713	0.560165856
60		2013	21,353,980	29,416,271	0.725924098
61		2014	25,099,875	33,134,403	0.757517044
62		2015	25,497,504	38,007,909	0.670847323
63		2016	23,387,406	39,564,228	0.591125044
64	GJTL	2012	7,391,409	5,478,384	1.349195128
65		2013	9,626,411	5,724,343	1.681662158
66		2014	10,059,605	5,983,292	1.681282645
67	HMSP	2012	12,939,107	13,308,420	0.972249674
68		2013	13,249,559	14,155,035	0.936031525
69		2014	14,882,516	13,498,114	1.102562625
70		2015	5,994,664	32,016,060	0.187239279
71		2016	8,333,263	34,175,014	0.243840807
72	ICBP	2012	5,766,682	11,986,798	0.481086108
73		2013	8,001,739	13,265,731	0.603188697
74		2014	9,870,264	15,039,947	0.656269866
75		2015	10,173,713	16,386,911	0.620843855
76		2016	10,401,125	18,500,823	0.562197963
77	IGAR	2012	70,313,908,037	242,028,852,241	0.290518702

78		2013	89,003,869,709	225,742,774,790	0.394271178
79		2014	86,443,556,430	263,451,227,145	0.328119771
80		2016	65,716,637,766	373,749,035,530	0.175830923
81	IMAS	2012	11,869,218,951,856	5,708,445,072,505	2.079238532
82		2013	15,655,152,396,933	6,659,870,110,697	2.350669328
83	INAI	2013	639,563,606,250	126,317,803,126	5.063131169
84		2014	751,439,553,825	145,842,103,885	5.152418498
85		2015	1,090,438,393,880	239,820,902,657	4.546886371
86		2016	1,081,015,810,782	258,016,602,673	4.189714149
87	INCI	2016	26,524,918,593	242,826,462,751	0.109234053
88	INDF	2012	25,249,168	34,140,237	0.739572136
89		2013	39,719,660	38,373,129	1.035090467
90		2014	44,710,509	41,228,376	1.084459621
91		2015	48,709,933	43,121,593	1.129594934
92		2016	38,233,092	43,941,423	0.870092259
93	INTP	2012	3,336,422	19,418,738	0.171814564
94		2013	3,629,554	22,977,687	0.157959937
95		2014	4,100,172	24,784,973	0.165429755
96		2015	3,772,410	23,865,950	0.158066618
97		2016	4,011,877	26,138,703	0.153484165
98	JECC	2012	566,079,393	142,875,793	3.962038503
99		2013	1,092,161,372	147,660,344	7.396443367
100		2015	990,707,822	367,756,259	2.693925114
101		2016	1,116,872,234	470,338,342	2.374614473
102	JPFA	2012	6,198,137	4,763,327	1.301220135
103		2013	9,672,368	5,245,222	1.844034056
104		2014	10,440,441	5,289,994	1.973620575
105		2016	9,878,062	9,372,964	1.053888823
106	KAEF	2012	634,813,891,119	1,441,533,689,666	0.440373954
107		2013	847,584,859,909	1,624,354,688,981	0.521797897
108		2014	1,157,040,676,384	1,811,143,949,913	0.638845232
109		2015	1,374,127,253,841	1,862,096,822,470	0.737946189
110		2016	2,341,155,131,870	2,271,407,409,194	1.030706831
111	KLBF	2012	2,046,313,566,061	7,371,643,614,897	0.277592579
112		2013	2,815,103,309,451	8,499,957,965,575	0.331190262
113		2014	2,607,556,689,283	9,817,475,678,446	0.26560358
114		2015	2,758,131,396,170	10,938,285,985,269	0.252153893
115		2016	2,762,162,069,572	12,463,847,141,085	0.221613924
116	KBLI	2013	450,372,591,220	886,649,700,731	0.507948732
117		2014	396,594,755,312	940,756,718,451	0.421569942
118		2015	524,437,909,934	1,027,361,931,042	0.510470453

119		2016	555,076,575,595	1,321,345,840,449	0.420084249
120	KBLM	2016	318,436,089,653	320,655,277,264	0.993079211
121	KIAS	2013	223,804,349,698	2,047,904,910,518	0.109284542
122		2014	235,745,579,997	2,352,542,603,065	0.100208846
123	LION	2012	61,667,655,113	371,829,387,027	0.165849331
124		2013	82,783,559,318	498,567,897,161	0.166042699
125		2014	156,123,759,272	443,978,957,043	0.351646754
126		2015	184,730,654,202	454,599,496,171	0.406359127
127		2016	215,209,902,816	470,603,093,171	0.457306605
128	LMSH	2012	31,022,520,184	97,525,195,182	0.318097494
129		2013	31,229,504,329	110,468,094,376	0.282701576
130		2014	23,964,388,443	115,951,209,812	0.206676485
131		2015	21,341,373,897	112,441,377,144	0.189800005
132		2016	45,511,700,128	117,316,469,122	0.387939566
133	MAIN	2012	1,118,011,031	681,870,544	1.639623593
134		2013	1,351,915,503	862,483,189	1.567468816
135	MBTO	2012	174,931,100,594	434,562,913,348	0.402544937
136	MERK	2012	152,698,086	416,741,865	0.366409278
137		2013	184,727,696	512,218,622	0.360642288
138		2014	162,908,670	553,690,856	0.294223154
139		2015	168,103,536	473,543,282	0.354990858
140		2016	161,262,425	582,672,469	0.27676342
141	MLBI	2012	822,195	329,853	2.492610345
142		2013	794,615	987,533	0.804646528
143		2014	1,677,254	553,797	3.02864407
144		2015	1,334,373	766,480	1.740910396
145		2016	1,454,398	820,640	1.77227286
146	MRAT	2012	164,751,376,547	1,096,821,575,914	0.150208001
147	MYOR	2012	5,234,655,914,665	3,067,850,327,238	1.706294426
148		2013	5,816,323,334,823	3,893,900,119,177	1.493701214
149		2014	6,190,553,036,545	4,100,554,992,789	1.509686627
150		2015	6,148,255,759,034	5,194,459,927,187	1.183617902
151		2016	6,657,165,872,077	6,265,255,987,065	1.062552893
152	ROTI	2012	538,337,083,673	666,607,597,550	0.80757718
153		2013	1,035,351,397,437	787,337,649,671	1.315003033
154		2014	1,182,771,921,472	960,122,354,744	1.231897076
155		2015	1,517,788,685,162	1,188,534,951,872	1.277024864
156		2016	1,476,889,086,692	1,442,751,772,026	1.023661253
157	SCCO	2012	832,876,706,628	654,044,664,731	1.273424816
158		2013	1,054,421,170,969	707,611,129,154	1.490113888
159		2014	841,614,670,129	814,392,519,881	1.033426326



160		2015	850,791,824,810	922,352,503,822	0.922415043
161		2016	1,229,514,818,362	1,220,420,673,224	1.007451648
162	SIDO	2013	326,051	2,625,456	0.124188331
163		2014	186,740	2,634,659	0.070878243
164		2015	197,797	2,598,314	0.076125133
165		2016	229,729	2,757,885	0.083298977
166	SIPD	2012	2,021,380,807,617	1,276,742,767,154	1.583232629
167	SKBM	2014	331,624,254,750	317,909,776,363	1.04313953
168		2015	420,396,809,051	344,087,439,659	1.221773191
169	SKLT	2012	120,263,906,808	129,482,560,948	0.928803894
170		2013	162,339,135,063	139,650,353,636	1.162468485
171		2014	178,206,785,017	153,368,106,620	1.161954652
172		2015	225,066,080,248	152,044,668,111	1.480262893
173		2016	272,088,644,079	296,151,295,872	0.918748788
174	SMCB	2012	3,750,461	8,418,056	0.445525784
175		2013	6,122,043	8,772,947	0.697831983
176		2014	8,436,760	8,758,592	0.963255281
177		2015	8,871,708	8,449,857	1.04992404
178	SMGR	2012	8,414,229,138	18,164,854,648	0.463214779
179		2013	8,988,908,217	21,803,975,875	0.412260051
180		2014	9,312,214,091	25,002,451,936	0.372452034
181		2015	10,712,320,531	27,440,798,401	0.390379331
182		2016	13,652,504,525	30,574,391,457	0.446533974
183	SPMA	2012	884,860,701,242	779,492,563,307	1.135175296
184	SQBB	2012	71,785,430	325,359,028	0.220634511
185		2013	74,135,708	347,052,274	0.213615393
186		2014	90,473,777	368,878,943	0.245266852
187		2015	109,974,035	354,053,487	0.310614184
188		2016	124,404,091	354,829,699	0.35060225
189	TCID	2012	164,751,376,547	1,096,821,575,914	0.150208001
190		2013	282,961,770,795	1,182,990,689,957	0.239191883
191		2014	569,730,901,368	1,283,504,442,268	0.443886973
192		2015	367,225,370,670	1,714,871,478,033	0.214141628
193		2016	401,942,530,776	1,783,158,507,325	0.225410433
194	TOTO	2012	624,499,013,875	898,164,900,513	0.695305521
195		2013	710,527,268,893	1,035,650,413,675	0.686068638
196		2014	796,096,371,054	1,231,192,322,624	0.646606023
197		2015	947,997,940,099	1,491,542,919,106	0.635582073
198		2016	1,057,566,418,720	1,523,874,519,542	0.693998361
199	TRIS	2012	123,691,800,811	242,556,471,149	0.509950529
200		2013	166,702,353,369	282,306,467,893	0.590501361

201		2014	214,390,227,222	309,510,415,383	0.692675324
202		2015	245,138,356,170	329,208,076,905	0.744630443
203		2016	293,073,984,034	346,627,180,477	0.845502028
204	TRST	2012	835,136,579,731	1,352,992,459,388	0.617251467
205		2013	1,551,242,364,818	1,709,677,140,374	0.907330588
206		2014	1,499,792,311,890	1,761,493,183,162	0.851432368
207		2015	1,400,438,809,900	1,956,920,690,054	0.715633913
208		2016	1,358,241,040,272	1,932,355,184,014	0.702894091
209	TSPC	2012	1,279,828,890,909	3,353,156,079,810	0.38167889
210		2013	1,545,006,061,565	3,862,951,854,240	0.399954781
211		2014	1,527,428,955,386	4,082,127,697,809	0.374174712
212		2015	1,947,588,124,083	4,337,140,975,120	0.44904884
213		2016	1,950,534,206,746	4,635,273,142,692	0.420802431
214	ULTJ	2013	796,474,448,056	2,015,146,534,086	0.395243936
215		2014	651,985,807,625	2,265,097,759,730	0.28784003
216	UNVR	2012	8,016,614	3,968,365	2.020130205
217		2013	9,093,518	4,254,670	2.137302776
218		2014	9,681,888	4,598,782	2.105315712
219		2015	10,902,585	4,827,360	2.258498434
220		2016	12,041,437	4,704,258	2.559688903
221	VOKS	2012	1,095,012,302,724	603,066,052,747	1.815741904
222		2013	1,354,581,302,107	601,249,018,963	2.252945551
223	WIIM	2012	550,946,790,179	656,304,363,721	0.839468424
224		2013	447,651,956,356	781,359,304,525	0.572914348
225		2014	478,482,577,195	854,425,098,590	0.560005292
226		2015	398,991,064,485	943,708,980,906	0.422790365
227		2016	362,540,740,471	991,093,391,804	0.365798767

## LAMPIRAN 10

### 1. Uji Statistik Deskriptif

	ROA	MBVE	DER	DPR
Mean	0.111219	2.958888	0.700753	0.340109
Median	0.095830	1.987140	0.549850	0.291210
Maximum	0.378900	22.54123	3.186680	0.987220
Minimum	0.004570	0.116060	0.070880	0.023250
Std. Dev.	0.076559	3.027808	0.522141	0.224442
Skewness	1.361678	2.926148	1.382448	0.881288
Kurtosis	4.864654	16.03576	5.411793	3.175984
Jarque-Bera	89.41831	1675.981	110.4956	25.75483
Probability	0.000000	0.000000	0.000000	0.000003
Sum	21.91015	582.9009	138.0484	67.00149
Sum Sq. Dev.	1.148826	1796.854	53.43568	9.873355
Observations	197	197	197	197

## 2. Analisis Regresi Linear Berganda

Dependent Variable: DPR

Method: Least Squares

Date: 03/25/18 Time: 19:18

Sample: 1 197

Included observations: 197

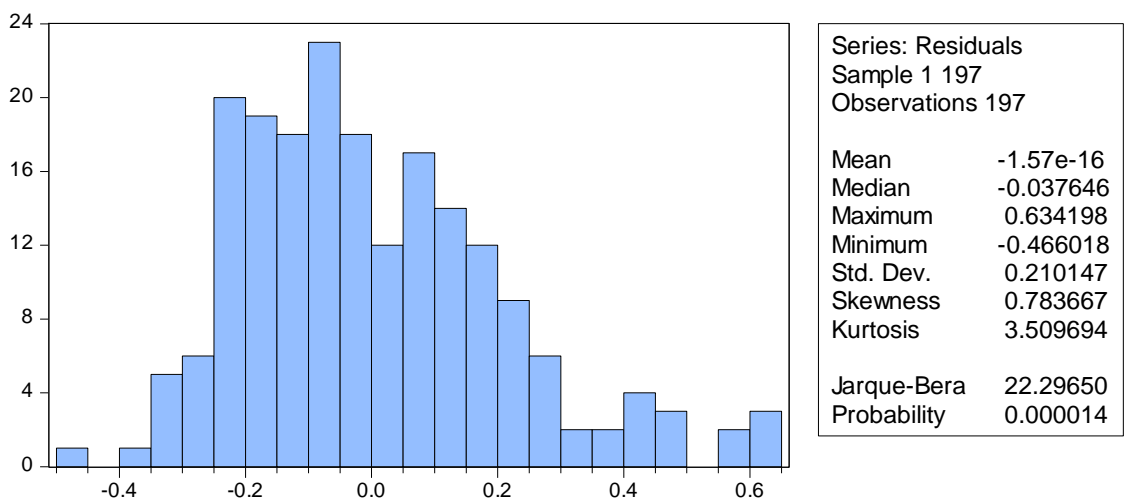
Variable	Coefficient	Std. Error	t-Statistic	Prob.
C	0.303377	0.041686	7.277722	0.0000
ROA	0.631488	0.257193	2.455310	0.0150
MBVE	0.005504	0.005957	0.924064	0.3566
DER	-0.071050	0.032794	-2.166586	0.0315

R-squared	0.123327	Mean dependent var	0.340109
Adjusted R-squared	0.109700	S.D. dependent var	0.224442
S.E. of regression	0.211774	Akaike info criterion	-0.246499
Sum squared resid	8.655702	Schwarz criterion	-0.179835
Log likelihood	28.28017	Hannan-Quinn criter.	-0.219513
F-statistic	9.050177	Durbin-Watson stat	1.898784
Prob(F-statistic)	0.000012		

## 3. Uji Asumsi Klasik

### a. Uji Normalitas



b. Uji Multikolinieritas

Variance Inflation Factors

Date: 03/25/18 Time: 19:19

Sample: 1 197

Included observations: 197

---

---

Variable	Coefficient Variance	Uncentered VIF	Centered VIF
C	0.001738	7.633020	NA
ROA	0.066148	5.288605	1.694444
MBVE	3.55E-05	2.786140	1.421597
DER	0.001075	3.601010	1.281333

---

---

c. Uji Autokorelasi

---

---

R-squared	0.123327	Mean dependent var	0.340109
Adjusted R-squared	0.109700	S.D. dependent var	0.224442
S.E. of regression	0.211774	Akaike info criterion	-0.246499
Sum squared resid	8.655702	Schwarz criterion	-0.179835
Log likelihood	28.28017	Hannan-Quinn criter.	-0.219513
F-statistic	9.050177	<b>Durbin-Watson stat</b>	<b>1.898784</b>
Prob(F-statistic)	0.000012		

---

---

#### d. Uji Heterokedastisitas

Heteroskedasticity Test: Harvey

F-statistic	2.175070	Prob. F(3,193)	0.0923
Obs*R-squared	6.442627	Prob. Chi-Square(3)	0.0920
Scaled explained SS	5.100216	Prob. Chi-Square(3)	0.1646

Test Equation:

Dependent Variable: LRESID2

Method: Least Squares

Date: 03/25/18 Time: 19:19

Sample: 1 197

Included observations: 197

Variable	Coefficient	Std. Error	t-Statistic	Prob.
C	-4.210549	0.386587	-10.89160	0.0000
ROA	3.526528	2.385165	1.478526	0.1409
MBVE	-0.096844	0.055241	-1.753113	0.0812
DER	-0.255836	0.304122	-0.841229	0.4013

R-squared	0.032704	Mean dependent var	-4.284161
Adjusted R-squared	0.017668	S.D. dependent var	1.981539
S.E. of regression	1.963957	Akaike info criterion	4.207895
Sum squared resid	744.4252	Schwarz criterion	4.274559
Log likelihood	-410.4776	Hannan-Quinn criter.	4.234881
F-statistic	2.175070	Durbin-Watson stat	2.004278
Prob(F-statistic)	0.092307		