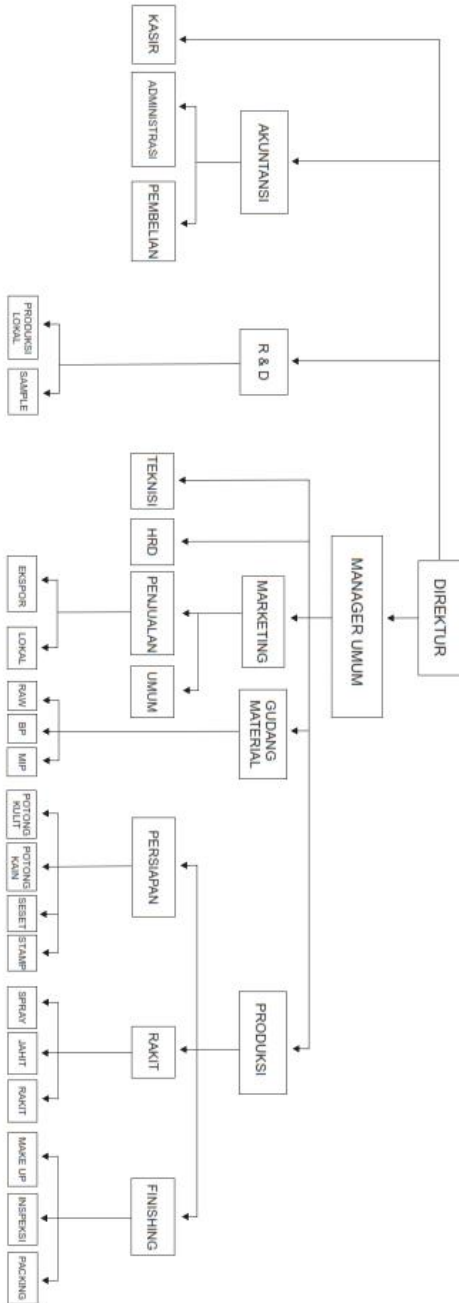


Lampiran 1

Struktur Organisasi

STRUKTUR ORGANISASI PT MANDIRI JOGJA INTERNASIONAL



Lampiran 2

data mentah laporan produksi dan kerusakan perusahaan

3 - 529 Black 6 ✓
 3 - 495 Black 10 -
 5 - 173 Black 7 ✓
 150 21-1-

253 Cognac 5 ✓
 495 Cognac 10 ✓
 271 Cognac 10 ✓
 462

463 Co
 463
 26/2 361
 29
 35
 195
 131
 530
 30
 13
 25

MJOINT PT MANDIRI JOGIA INTERNASIONAL
 Exclusive Leathercraft Klodangan RT 02 RW 26 Sendangtirto
 Barabai, Sleman, D.I. Yogyakarta
 55573, Indonesia

LAPORAN PRODUKSI
 Bagian: QC SPV/Kpl. Line :
 Order: JP 4 Tanggal: 6/3

NO.	KODE/NAMA	WARNA	MASUK	KELUAR	KETERANGAN
1	473	Black		48	565 Cognac 6
2	589	Black		34	565 Black 9
3	589	Cognac		15	603 Black 10
4	589	Brown		5	
5	589	Havana		5	
6	590	Havana		5	
7	590	Black		1	
8	594	Tobacco		5	
9	354	Tobacco		4	

SPV/Kpl. Line ()
 Kepala/Asisten Prod. ()

530 Red 1 -
 Red 3 - 143 Black 6 ✓
 Red 3 - 529 Black 6 ✓
 Red 3 - 495 Black 10 -
 Red 5 - 173 Black 7 ✓
 150 21-1-

306 Havana 9 ✓
 266 Havana 5 ✓
 253 Cognac 5 ✓
 495 Cognac 10 ✓
 271 Cognac 10 ✓
 11-

463 Red
 463 Co
 463
 26/2 261 Red
 105 Red
 109 Red
 385
 495
 131
 530
 305
 131
 28
 25
 5

MJOINT PT MANDIRI JOGIA INTERNASIONAL
 Exclusive Leathercraft Klodangan RT 02 RW 26 Sendangtirto
 Barabai, Sleman, D.I. Yogyakarta
 55573, Indonesia

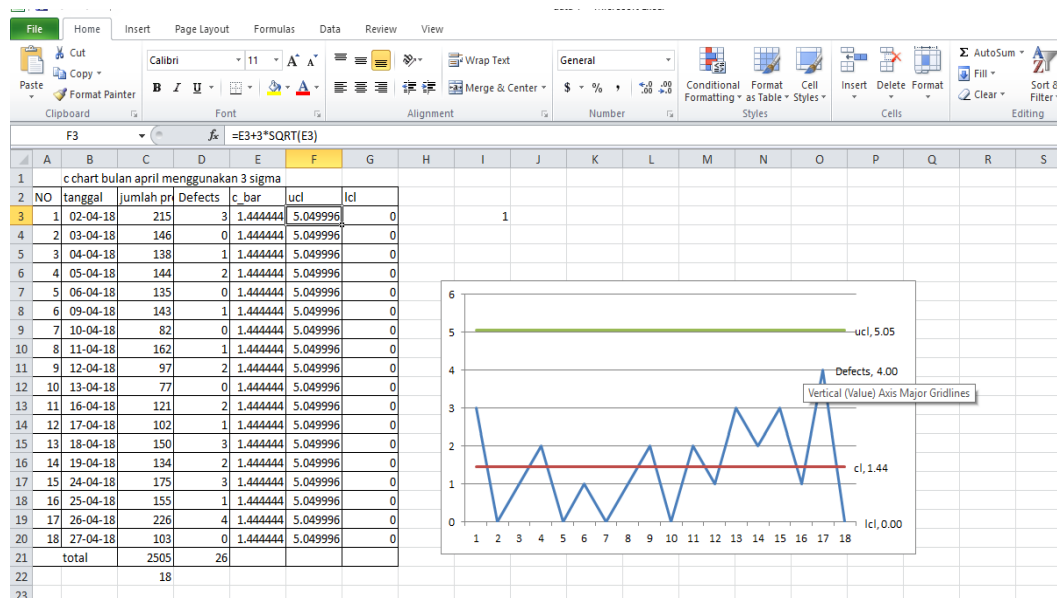
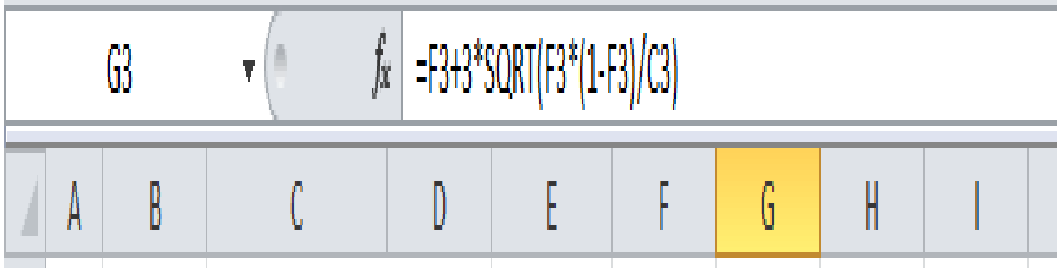
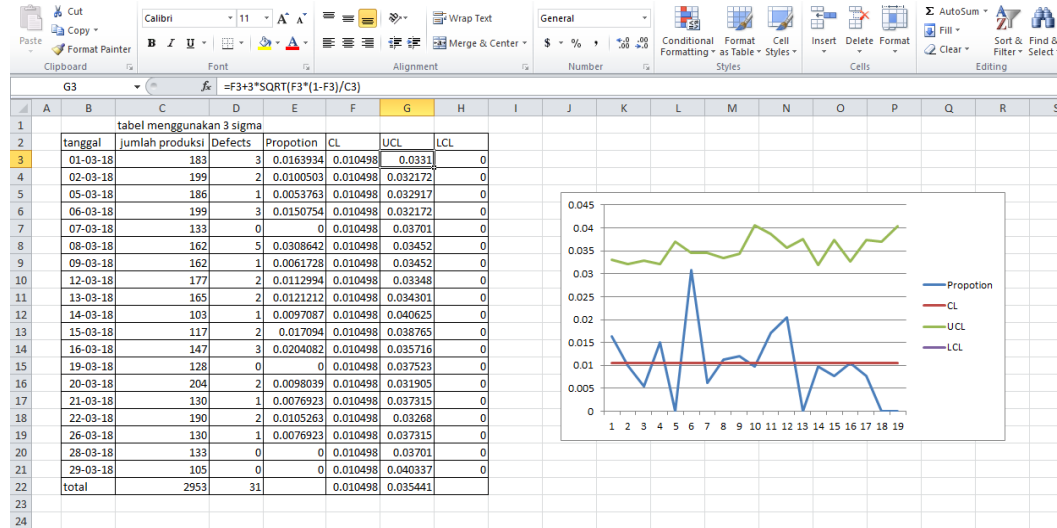
LAPORAN PRODUKSI
 Bagian: QC SPV/Kpl. Line :
 Order: BUCINI Tanggal: 6/3

NO.	KODE/NAMA	WARNA	MASUK	KELUAR	KETERANGAN
1	131	Brown		10	
2	490	Brown		10	
3	306	Brown		10	
4	361	Red		5	
5	500	Green		5	
6	499	Green		5	
7	495	Brown		10	
8	361	Tobacco		2	
9	362	Tobacco		1	

SPV/Kpl. Line ()
 Kepala/Asisten Prod. ()

Lampiran 3

Contoh Analisis Menggunakan Microsoft Excel 2010



Lampiran 4
Dokumentasi di perusahaan



