

		P1	P2	P3	P4	P5	P6	P7	P8	P9	P10	TOTAL
P1	Pearson Correlation	1	,186	,304	,327	,150	,207	,151	,432	,216	,120	,491*
	Sig. (2-tailed)		,325	,102	,078	,429	,273	,424	,017	,253	,529	,006
	N	30	30	30	30	30	30	30	30	30	30	30
P2	Pearson Correlation	,186	1	,542**	,283	,394*	,089	,295	,391*	,388*	,407	,663*
	Sig. (2-tailed)	,325		,002	,130	,031	,640	,113	,033	,034	,025	,000
	N	30	30	30	30	30	30	30	30	30	30	30
P3	Pearson Correlation	,304	,542**	1	,655**	,553**	-	,271	,351	,413*	,259	,731*
	Sig. (2-tailed)	,102	,002		,000	,002	,683	,148	,058	,023	,167	,000
	N	30	30	30	30	30	30	30	30	30	30	30
P4	Pearson Correlation	,327	,283	,655**	1	,304	,082	,448*	,370	,469**	,340	,751*
	Sig. (2-tailed)	,429	,130	,000		,103	,667	,013	,044	,009	,066	,000
	N	30	30	30	30	30	30	30	30	30	30	30
P5	Pearson Correlation	,150	,394*	,553**	,304	1	-	,173	,237	,082	-	,433*
	Sig. (2-tailed)	,429	,031	,002	,103		,348	,361	,207	,667	,920	,017
	N	30	30	30	30	30	30	30	30	30	30	30
P6	Pearson Correlation	,207	,089	-	,082	-	1	,219	,024	,335	,227	,399
	Sig. (2-tailed)	,273	,640	,683	,667	,348		,245	,900	,071	,227	,067
	N	30	30	30	30	30	30	30	30	30	30	30
P7	Pearson Correlation	,151	,295	,271	,448*	,173	,219	1	,159	,480**	,123	,599*
	Sig. (2-tailed)	,429	,113	,148	,013	,361	,245		,400	,007	,519	,000

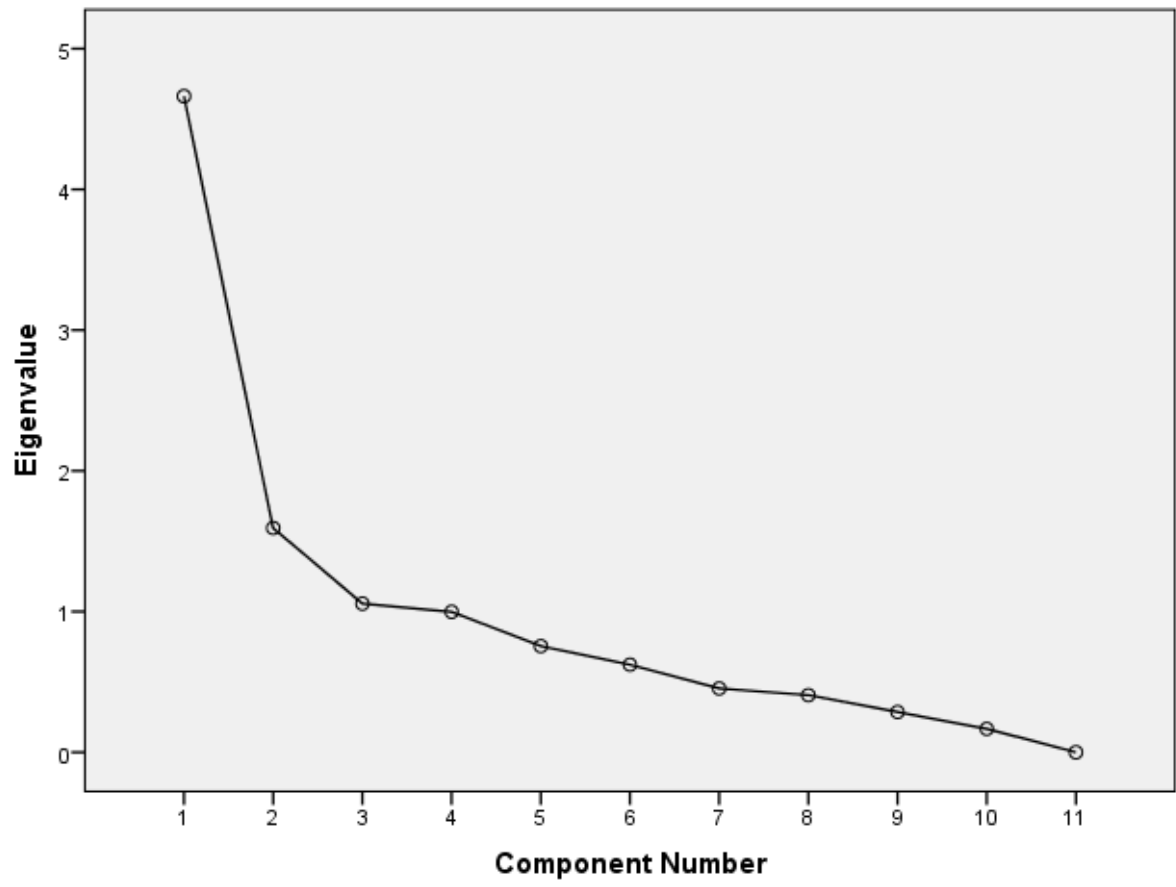
P2	Pearson Correlation Sig. (2-tailed) N	,244	1	,196	,237	,212	,193	,261	,020	,082	-,029	,418
		,193		,300	,207	,261	,308	,164	,917	,667	,880	,021
P3	Pearson Correlation Sig. (2-tailed) N	,473**	30	30	30	30	30	30	30	30	30	30
		,196	1	,421*	,456*	-,241	,397*	,020	,137	,374	,598**	
		,008	,300		,021	,011	,200	,030	,917	,471	,042	,000
P4	Pearson Correlation Sig. (2-tailed) N	,229	,237	,421*	1	,346	-,136	,204	,341	,418	,542**	,682**
		,224	,207	,021		,061	,475	,281	,065	,022	,002	,000
P5	Pearson Correlation Sig. (2-tailed) N	,147	,212	,456*	,346	1	,008	,423*	,332	,510*	,282	,679**
		,437	,261	,011	,061		,968	,020	,073	,004	,131	,000
P6	Pearson Correlation Sig. (2-tailed) N	,317	,193	-,241	-,136	,008	1	,328	,204	,204	-,081	,382
		,088	,308	,200	,475	,968		,077	,280	,279	,672	,139
P7	Pearson Correlation Sig. (2-tailed) N	,155	,261	,397*	,204	,423*	,328	1	,462*	,259	,171	,616**
		,415	,164	,030	,281	,020	,077		,010	,168	,367	,000
P8	Pearson Correlation	-,112	,020	,020	,341	,332	,204	,462*	1	,400	,243	,502**

	on											
	Sig. (2-tailed)	,557	,917	,917	,065	,073	,280	,010	,029	,195	,005	
	N	30	30	30	30	30	30	30	30	30	30	30
P9	Pearson Correlation	,146	,082	,137	,418*	,510**	,204	,259	,400	,1	,371	,641**
	Sig. (2-tailed)	,442	,667	,471	,022	,004	,279	,168	,029		,044	,000
	N	30	30	30	30	30	30	30	30	30	30	30
P10	Pearson Correlation	,315	-,029	,374*	,542**	,282	-,081	,171	,243	,371	,1	,595**
	Sig. (2-tailed)	,090	,880	,042	,002	,131	,672	,367	,195	,044		,001
	N	30	30	30	30	30	30	30	30	30	30	30
TOTAL	Pearson Correlation	,542**	,418*	,598**	,682**	,679**	,382	,616**	,502**	,641**	,595**	,1
	Sig. (2-tailed)	,002	,021	,000	,000	,000	,139	,000	,005	,000	,001	
	N	30	30	30	30	30	30	30	30	30	30	30

** . Correlation is significant at the 0.01 level (2-tailed).

* . Correlation is significant at the 0.05 level (2-tailed).

Scree Plot



REALIBILITI RELIGIUS (X)

Case Processing Summary

		N	%
Cases	Valid	30	100,0
	Excluded ^a	0	,0
	Total	30	100,0

a. Listwise deletion based on all variables in the procedure.

Reliability Statistics

Cronbach's Alpha	Cronbach's Alpha Based on Standardized Items	N of Items
,746	,845	11

Item Statistics

	Mean	Std. Deviation	N
P1	3,4667	,57135	30
P2	3,2000	,71438	30
P3	3,1333	,81931	30
P4	2,8000	,88668	30
P5	3,4000	,56324	30
P6	3,1000	,75886	30
P7	2,6333	,85029	30
P8	3,5667	,56832	30
P9	3,1667	,74664	30
P10	3,2667	,63968	30
TOTAL	31,7333	4,26642	30

REALIBILITI PENCEGAHAN PERILAKU SEXSEUAL (Y)

Case Processing Summary

		N	%
Cases	Valid	30	100,0
	Excluded ^a	0	,0
	Total	30	100,0

a. Listwise deletion based on all variables in the procedure.

Reliability Statistics

Cronbach's Alpha	Cronbach's Alpha Based on Standardized Items	N of Items
,737	,819	11

Item Statistics

	Mean	Std. Deviation	N
P1	3,1333	1,00801	30
P2	3,1667	,74664	30
P3	3,1667	,74664	30
P4	2,5667	1,00630	30
P5	2,7333	,94443	30
P6	3,2667	,63968	30
P7	3,2333	,67891	30
P8	3,1333	,77608	30
P9	3,1000	,84486	30
P10	2,9000	,80301	30
TOTAL	30,4000	4,63569	30

UJI T

One-Sample Statistics

		Statistic	Bootstrap ^a			
			Bias	Std. Error	95% Confidence Interval	
					Lower	Upper
DATA	N	30				
	Mean	61,0667	,0767	1,6698	57,7008	64,6983
	Std. Deviation	9,56262	-,22021	1,00638	7,35976	11,22645
	Std. Error Mean	1,74589				

a. Unless otherwise noted, bootstrap results are based on 1000 bootstrap samples

One-Sample Test

Test Value = 0						
	t	Df	Sig. (2-tailed)	Mean Difference	95% Confidence Interval of the Difference	
					Lower	Upper
					DATA	34,977

Bootstrap for One-Sample Test

	Mean Difference	Bootstrap ^a				
		Bias	Std. Error	Sig. (2-tailed)	95% Confidence Interval	
					Lower	Upper
DATA	61,06667	,07670	1,66976	,001	57,70085	64,69831

a. Unless otherwise noted, bootstrap results are based on 1000 bootstrap samples

NORMALITAS

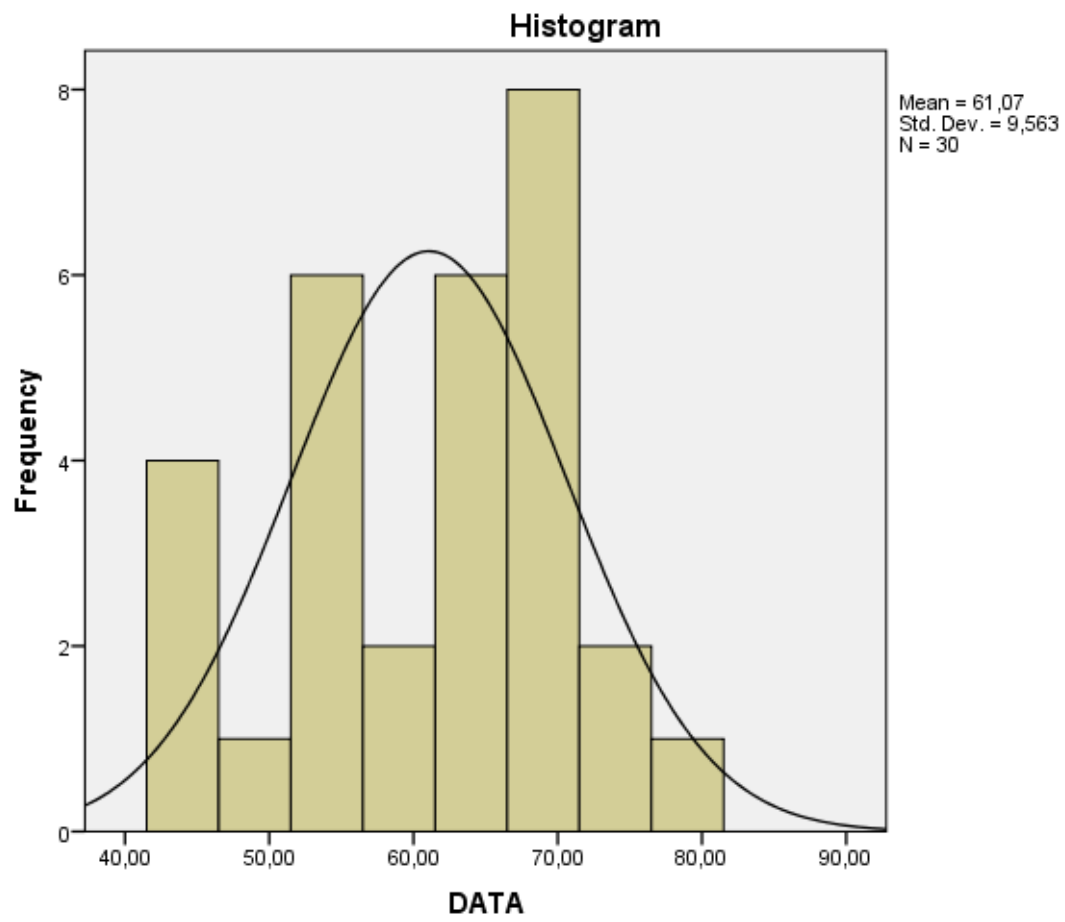
Statistics

DATA

N	Valid	30
	Missing	0
Mean		61,0667
Median		62,0000
Mode		67,00
Range		36,00
Minimum		44,00
Maximum		80,00

DATA

	Frequency	Percent	Valid Percent	Cumulative Percent
44,00	1	3,3	3,3	3,3
46,00	3	10,0	10,0	13,3
47,00	1	3,3	3,3	16,7
54,00	2	6,7	6,7	23,3
55,00	2	6,7	6,7	30,0
56,00	2	6,7	6,7	36,7
57,00	1	3,3	3,3	40,0
61,00	1	3,3	3,3	43,3
62,00	3	10,0	10,0	53,3
63,00	1	3,3	3,3	56,7
65,00	2	6,7	6,7	63,3
67,00	4	13,3	13,3	76,7
68,00	2	6,7	6,7	83,3
69,00	1	3,3	3,3	86,7
71,00	1	3,3	3,3	90,0
76,00	2	6,7	6,7	96,7
80,00	1	3,3	3,3	100,0
Total	30	100,0	100,0	



REGRESI LINEAR

Model Summary

Model	R	R Square	Adjusted R Square	Std. Error of the Estimate
1	,637 ^a	,405	,384	3,63780

a. Predictors: (Constant), X

ANOVA^a

Model		Sum of Squares	df	Mean Square	F	Sig.
1	Regression	252,660	1	252,660	19,092	,000 ^b
	Residual	370,540	28	13,234		
	Total	623,200	29			

a. Dependent Variable: Y

b. Predictors: (Constant), X

Coefficients^a

Model		Unstandardized Coefficients		Standardized Coefficients	t	Sig.
		B	Std. Error	Beta		
1	(Constant)	8,446	5,068		1,666	,107
	X	,692	,158	,637	4,369	,000

a. Dependent Variable: Y

Tingkat Religiusitas

		Frequency	Percent	Valid Percent	Cumulative Percent
Valid	Kurang	5	16,7	16,7	16,7
	Cukup	11	36,7	36,7	53,3
	Tinggi	14	46,7	46,7	100,0
	Total	30	100,0	100,0	

Pencegahan Prilaku Seksual Pranikah

		Frequency	Percent	Valid Percent	Cumulative Percent
Valid	Kurang	2	6,7	6,7	6,7
	Cukup	13	43,3	43,3	50,0
	Tinggi	15	50,0	50,0	100,0
	Total	30	100,0	100,0	

Pengkategorian data dilakukan berdasarkan *Mean Ideal dan Standar Deviation Ideal*. Sugiyono (2013: 36) menyatakan bahwa pembagian kategori dapat dibagi menjadi empat kriteria yaitu tinggi, cukup, kurang dan rendah. Hasil perhitungan dapat diperoleh sebagai berikut :

Tinggi : $X \geq (M_i + 1,5 SD_i)$

Cukup : $(M_i + 0 SD_i) \leq X < (M_i + 1,5 SD_i)$

Kurang : $(M_i - 1,5 SD_i) \leq X < (M_i + 0 SD_i)$

Rendah : $X < (M_i - 1,5 SD_i)$

Keterangan :

M_i : Rerata / *Mean Ideal*

SD_i : Standar Deviasi Ideal

Sedangkan dalam penentuan besar mean ideal (M_i) dan standar deviasi ideal (SD_i) adalah:

M_i : $\frac{1}{2}$ (skor ideal tertinggi + skor ideal terendah)

SD_i : $\frac{1}{6}$ (skor ideal tertinggi - skor ideal terendah)