

LAMPIRAN

LAMPIRAN 1

Sampel Perusahaan Manufaktur 2012-2016

No	Kode	Nama Perusahaan
1.	AMFG	Asahimas Flat Glass Tbk.
2.	ARNA	Arwana Citra Mulia Tbk.
3.	ASII	Astra International Tbk.
4.	AUTO	Astra Auto Part Tbk.
5.	BATA	Sepatu Bata Tbk.
6.	CPIN	Charoen Pokphand Indonesia Tbk.
7.	DLTA	Delta Djakarta Tbk.
8.	DVLA	Darya Varia Laboratoria Tbk
9.	EKAD	Ekadharma International Tbk
10.	GGRM	Gudang Garam Tbk.
11.	HMSP	Hanjaya Mandala Sampoerna Tbk.
12.	ICBP	Indofood CBP Sukses Makmur Tbk.
13.	INDF	Indofood Sukses Makmur Tbk.
14.	INTP	Indocement Tunggal Prakarsa Tbk.
15.	KAEF	Kimia Farma Tbk.
16.	KLBF	Kalbe Farma Tbk.
17.	LION	Lion Metal Works Tbk.
18.	LMSH	Lionmesh Prima Tbk.
19.	MERK	Merck Indonesia Tbk.
20.	MLBI	Multi Bintang Indonesia Tbk.
21.	MYOR	Mayora Indah Tbk.
22.	ROTI	Nippon Indosari Corporindo Tbk.
23.	SCCO	Supreme Cable Manufacturing and Commerce Tbk.
24.	SKLT	Sekar Laut Tbk.
25.	SMGR	Semen Gresik Tbk.
26.	SMSM	Selamat Sempurna Tbk.
27.	SQBB	Taisho Pharmaceutical Indonesia Tbk

No	Kode	Nama Perusahaan
28.	TCID	Mandom Indonesia Tbk.
29.	TOTO	Surya Toto Indonesia Tbk.
30.	TRIS	Trisula International Tbk.
31.	TRST	Trias Sentosa Tbk.
32.	TSPC	Tempo Scan Pasific Tbk.
33.	WIIM	Wismilak Inti Makmur Tbk

LAMPIRAN 2

Data Perhitungan Variabel Sampel Penelitian Periode 2012-2016

1. Profitabilitas (*Return On Asset*)

No	Kode Emiten	Tahun	Laba Bersih	Total Aset	ROA
1	AMFG	2012	346609000000	3115421000000	0.111255911
2	ARNA	2012	158684349130	937359770277	0.169288628
3	ASII	2012	22742000000000	182274000000000	0.124768206
4	AUTO	2012	1135914000000	8881642000000	0.127894594
5	BATA	2012	69343398000	574107994000	0.120784589
6	CPIN	2012	2680872000000	12348627000000	0.217098792
7	DLTA	2012	213421077000	745306835000	0.286353307
8	DVLA	2012	148909089000	1074691476000	0.138559849
9	EKAD	2012	36197747370	273893467429	0.132159951
10	GGRM	2012	4068711000000	41509325000000	0.098019204
11	HMSP	2012	9945296000000	26247527000000	0.378904115
12	ICBP	2012	2282371000000	17753480000000	0.128559077
13	INDF	2012	4779446000000	59324207000000	0.080564853
14	INTP	2012	4763388000000	22755160000000	0.209332213
15	KAEF	2012	205763997378	2076347580785	0.099099014
16	KLBF	2012	1775098847932	9417957180958	0.188480242
17	LION	2012	85373721654	433497042140	0.196941878

No	Kode Emiten	Tahun	Laba Bersih	Total Aset	ROA
18	LMSH	2012	41282515026	128547715366	0.321145459
19	MERK	2012	107808155000	569430951000	0.189326124
20	MLBI	2012	453405000000	1152048000000	0.393564331
21	MYOR	2012	744428404309	8302506241903	0.089663095
22	ROTI	2012	149149548025	1204944681223	0.123781241
23	SCCO	2012	169741648691	1486921371360	0.114156439
24	SKLT	2012	7962693771	249746467756	0.031883109
25	SMGR	2012	4926639847000	26579083786000	0.185357776
26	SMSM	2012	254635403407	1441204473590	0.176682357
27	SQBB	2012	135248606000	397144458000	0.340552671
28	TCID	2012	150373851969	1261572952461	0.119195526
29	TOTO	2012	235945643357	1522663914388	0.154955825
30	TRIS	2012	44393034558	366248271960	0.121210223
31	TRST	2012	61453058755	2188129039119	0.028084751
32	TSPC	2012	635176093653	4632984970719	0.137098673
33	WIIM	2012	77301783553	1207251153900	0.064031236
34	AMFG	2013	338358000000	3539393000000	0.095597748
35	ARNA	2013	237697913883	1135244802060	0.209380315
36	ASII	2013	2229700000000	21399400000000	0.10419451
37	AUTO	2013	1058015000000	12617678000000	0.083851799
38	BATA	2013	44373679000	680685060000	0.065189735
39	CPIN	2013	2528690000000	15722197000000	0.160835664
40	DLTA	2013	270498062000	867040802000	0.311978469
41	DVLA	2013	125796473000	1190054288000	0.1057065
42	EKAD	2013	39450652821	343601504089	0.114815134
43	GGRM	2013	4383932000000	5077025100000000	0.000863484
44	HMSP	2013	10818486000000	274045940000000	0.039476907
45	ICBP	2013	3631301000000	2890194800000	1.256420847
46	INDF	2013	3416635000000	78092789000000	0.043750967

No	Kode Emiten	Tahun	Laba Bersih	Total Aset	ROA
47	INTP	2013	5012294000000	2660724100000	1.883808246
48	KAEF	2013	215642329977	2471939548890	0.087236086
49	KLBF	2013	1970452449686	11315061275026	0.174144214
50	LION	2013	64761350816	498567897161	0.129894747
51	LMSH	2013	14382899194	141697598705	0.101504184
52	MERK	2013	175444757000	696946318000	0.25173353
53	MLBI	2013	171229000000	1782148000000	0.096080124
54	MYOR	2013	1058418939252	9709838250473	0.109004796
55	ROTI	2013	158015270921	1822689047108	0.086693488
56	SCCO	2013	10496231423	1762032300123	0.005956889
57	SKLT	2013	11440014188	301989488699	0.03788216
58	SMGR	2013	5354298521000	30792884092000	0.173881034
59	SMSM	2013	338222792309	1701103245176	0.198825552
60	SQBB	2013	149521096	421187982000	0.000354998
61	TCID	2013	160563780833	1465952460752	0.109528641
62	TOTO	2013	236557513162	1746177682568	0.135471616
63	TRIS	2013	48195237468	449008821261	0.10733695
64	TRST	2013	32965552359	3260919505192	0.010109281
65	TSPC	2013	638535108795	5407957915805	0.118073239
66	WIIM	2013	132322207861	1229011260881	0.107665578
67	AMFG	2014	458635000000	3918391000000	0.117046767
68	ARNA	2014	261651053219	1259175442875	0.20779555
69	ASII	2014	22125000000000	236029000000000	0.093738481
70	AUTO	2014	956409000000	14360926000000	0.066598003
71	BATA	2014	70781440000	774891087000	0.091343727
72	CPIN	2014	1746644000000	20862439000000	0.083721946
73	DLTA	2014	288073432000	991947134000	0.290412082
74	DVLA	2014	80929476000	1236247525000	0.065463812
75	EKAD	2014	40756078282	411348790570	0.099079125

No	Kode Emiten	Tahun	Laba Bersih	Total Aset	ROA
76	GGRM	2014	5395293000000	58220600000000	0.092669828
77	HMSP	2014	10181083000000	28380630000000	0.358733509
78	ICBP	2014	2531681000000	24910211000000	0.101632258
79	INDF	2014	5146323000000	85938885000000	0.059883521
80	INTP	2014	5274009000000	28884973000000	0.1825866
81	KAEF	2014	236531070864	2968184626297	0.0796888
82	KLBF	2014	2121090581630	12425032367729	0.170711071
83	LION	2014	49001630102	600102716315	0.081655405
84	LMSH	2014	7403115436	139915598255	0.052911295
85	MERK	2014	181472234000	716599526000	0.253240795
86	MLBI	2014	794883000000	2231051000000	0.35628186
87	MYOR	2014	409824768594	10291108029343	0.039823192
88	ROTI	2014	188577521074	2142894276216	0.088001318
89	SCCO	2014	137618300727	1656007190010	0.083102478
90	SKLT	2014	16480714984	331574891637	0.049704352
91	SMGR	2014	5573577279000	34314666027000	0.162425514
92	SMSM	2014	420436000000	1749395000000	0.240332229
93	SQBB	2014	164808009000	459352720000	0.358783135
94	TCID	2014	174314394101	1853235343636	0.094059502
95	TOTO	2014	293803908949	2027288693678	0.144924554
96	TRIS	2014	35439064992	523900642605	0.06764463
97	TRST	2014	30084477143	3261285495052	0.00922473
98	TSPC	2014	584293062124	5592730492960	0.104473667
99	WIIM	2014	112304822060	1332907675785	0.084255515
100	AMFG	2015	341346000000	4270275000000	0.079935367
101	ARNA	2015	71209943348	1430779475454	0.049770034
102	ASII	2015	15613000000000	24534500000000	0.063636919
103	AUTO	2015	322701000000	1433911000000	0.022504953
104	BATA	2015	129519446000	795257974000	0.162864693

No	Kode Emiten	Tahun	Laba Bersih	Total Aset	ROA
105	CPIN	2015	1832598000000	24916656000000	0.073549115
106	DLTA	2015	192045199000	1038321916000	0.184957282
107	DVLA	2015	107894430000	1376278237000	0.078395798
108	EKAD	2015	47040256456	389691595500	0.120711499
109	GGRM	2015	6452834000000	63505413000000	0.101610771
110	HMSP	2015	10363308000000	38010724000000	0.272641689
111	ICBP	2015	2923148000000	26560624000000	0.110055697
112	INDF	2015	3709501000000	91831526000000	0.040394635
113	INTP	2015	4356661000000	27638360000000	0.157630952
114	KAEF	2015	265549762082	3434879313034	0.077309779
115	KLBF	2015	2057694281873	13696417381439	0.15023595
116	LION	2015	46018637487	639330150373	0.071979458
117	LMSH	2015	1944443395	133782751041	0.014534336
118	MERK	2015	142545462000	641646818000	0.222155644
119	MLBI	2015	496909000000	2100853000000	0.236527258
120	MYOR	2015	1250233128560	11342715686221	0.110223439
121	ROTI	2015	270538700440	2706323637034	0.099965391
122	SCCO	2015	159119646125	1773144328632	0.089738688
123	SKLT	2015	20066791849	377110748359	0.053211933
124	SMGR	2015	4525441038000	38153118932000	0.118612611
125	SMSM	2015	461307000000	2220108000000	0.207785837
126	SQBB	2015	150207262000	464027522000	0.323703347
127	TCID	2015	544474278014	2082096848703	0.261502859
128	TOTO	2015	285236780659	2439540859205	0.116922322
129	TRIS	2015	42045216515	577786346557	0.072769488
130	TRST	2015	25314103403	3357359499954	0.007539885
131	TSPC	2015	529218651807	6284729099203	0.084207075
132	WIIM	2015	131081111587	1342700045391	0.097625015
133	AMFG	2016	2604440000000	5504890000000	0.473113904

No	Kode Emiten	Tahun	Laba Bersih	Total Aset	ROA
134	ARNA	2016	91375910975	1543216299146	0.059211344
135	ASII	2016	18302000000000	261855000000000	0.069893643
136	AUTO	2016	483421000000	14612274000000	0.033083215
137	BATA	2016	42231663000	804742917000	0.052478453
138	CPIN	2016	2225402000000	24204994000000	0.091939787
139	DLTA	2016	254509268000	1197796650000	0.212481199
140	DVLA	2016	152083400000	1531365558000	0.099312277
141	EKAD	2016	90685821530	702508630708	0.129088551
142	GGRM	2016	6672682000000	62951634000000	0.105996963
143	HMSP	2016	12762229000000	42508277000000	0.300229271
144	ICBP	2016	3631301000000	28901948000000	0.125642085
145	INDF	2016	5266906000000	82174515000000	0.064094154
146	INTP	2016	3870319000000	30150580000000	0.12836632
147	KAEF	2016	271597947663	4612562541064	0.058882225
148	KLBF	2016	2350884933551	15226009210657	0.154399285
149	LION	2016	42345417055	685812995987	0.061744845
150	LMSH	2016	6252814811	162828169250	0.038401309
151	MERK	2016	153842847000	743934894000	0.206796116
152	MLBI	2016	982129000000	2275038000000	0.431697844
153	MYOR	2016	1388676127665	12922421859142	0.107462529
154	ROTI	2016	279777368831	2919640858718	0.095825953
155	SCCO	2016	340593630534	2449935491586	0.139021469
156	SKLT	2016	20646121074	568239939951	0.036333456
157	SMGR	2016	4535036823000	44226895982000	0.102540247
158	SMSM	2016	502192000000	2254740000000	0.222727232
159	SQBB	2016	165195371000	479233790000	0.344707269
160	TCID	2016	162059596347	2185101038101	0.074165722
161	TOTO	2016	168564583718	2581440938262	0.06529864
162	TRIS	2016	21860573613	639701164511	0.034173103

No	Kode Emiten	Tahun	Laba Bersih	Total Aset	ROA
163	TRST	2016	33794866940	3290596224286	0.010270135
164	TSPC	2016	545493536262	6585807349438	0.082828651
165	WIIM	2016	106290306868	1353634132275	0.078522183

2. Likuiditas (*Current Ratio*)

No	Kode Emiten	Tahun	Aset Lancar	Hutang Lancar	CR
1	AMFG	2012	1658468000000	426669000000	3.887013118
2	ARNA	2012	323837015729	277678054056	1.16623194
3	ASII	2012	7579900000000	5417800000000	1.399073425
4	AUTO	2012	3205631000000	2751766000000	1.164935899
5	BATA	2012	357373694000	168267966000	2.123836774
6	CPIN	2012	7180890000000	2167652000000	3.312750386
7	DLTA	2012	631333221000	119919552000	5.264639589
8	DVLA	2012	826342540000	191717606000	4.310206857
9	EKAD	2012	180370886413	74814329851	2.410913615
10	GGRM	2012	29954021000000	13802317000000	2.170216856
11	HMSP	2012	21128313000000	11897977000000	1.775790372
12	ICBP	2012	9922662000000	3648069000000	2.719976514
13	INDF	2012	26235990000000	12805200000000	2.048854372
14	INTP	2012	14597400000000	2418762000000	6.035070834
15	KAEF	2012	1505798399164	537184235226	2.803132148
16	KLBF	2012	6441710544081	1891617853724	3.405397412
17	LION	2012	394802917573	42249381295	9.344584594
18	LMSH	2012	101832924451	25036281503	4.067414102
19	MERK	2012	463883090000	119827938000	3.871243199
20	MLBI	2012	462471000000	796679000000	0.580498545
21	MYOR	2012	5313599558516	1924434119144	2.76112313
22	ROTI	2012	219818034145	195455567772	1.124644525

No	Kode Emiten	Tahun	Aset Lancar	Hutang Lancar	CR
23	SCCO	2012	1197203155764	818847218587	1.462059257
24	SKLT	2012	125666621792	88824705832	1.414771044
25	SMGR	2012	8231297105000	4825204637000	1.705895962
26	SMSM	2012	986324235891	480851511068	2.051203362
27	SQBB	2012	307406505000	63322304000	4.854632342
28	TCID	2012	768615499251	99477347026	7.726537973
29	TOTO	2012	966806112377	448767622942	2.154357986
30	TRIS	2012	286526762458	114554270248	2.501231616
31	TRST	2012	383465235358	643329849780	0.596063179
32	TSPC	2012	3393778315450	1097134545306	3.093310962
33	WIIM	2012	1049445256688	508892082591	2.062215728
34	AMFG	2013	198011600000	473960000000	0.417781247
35	ARNA	2013	405105632599	311780561616	1.299329344
36	ASII	2013	88352000000000	71139000000000	1.241962918
37	AUTO	2013	5029517000000	2661312000000	1.889863721
38	BATA	2013	435578754000	257337714000	1.692634738
39	CPIN	2013	8824900000000	2327048000000	3.792315414
40	DLTA	2013	748111003000	157091241000	4.762270628
41	DVLA	2013	913983962000	215473310000	4.241750229
42	EKAD	2013	229041255054	98355431960	2.328709767
43	GGRM	2013	50770251000000	20094580000000	2.526564427
44	HMSP	2013	21247830000000	12123790000000	1.752573246
45	ICBP	2013	11321715000000	4696583000000	2.41062811
46	INDF	2013	32464497000000	19471309000000	1.667299153
47	INTP	2013	16846248000000	2740089000000	6.148065993
48	KAEF	2013	1810614614537	746123148554	2.426696743
49	KLBF	2013	7497319451543	2640590023748	2.839259175
50	LION	2013	428821050227	63728680126	6.728855036
51	LMSH	2013	115485009525	27518969110	4.196560164

No	Kode Emiten	Tahun	Aset Lancar	Hutang Lancar	CR
52	MERK	2013	588237590000	147818253000	3.979465175
53	MLBI	2013	706252000000	722542000000	0.977454598
54	MYOR	2013	6430065428871	2631646469682	2.44336217
55	ROTI	2013	363881019917	320197405822	1.136427133
56	SCCO	2013	1454622022241	1043362648524	1.394167238
57	SKLT	2013	154315590972	125712112019	1.227531608
58	SMGR	2013	9972110370000	5297630537000	1.882371808
59	SMSM	2013	1108057000000	524655000000	2.11197263
60	SQBB	2013	329044588000	66233801000	4.967925486
61	TCID	2013	726505280778	203320578032	3.573200941
62	TOTO	2013	1089798514557	496494829421	2.19498462
63	TRIS	2013	370108336797	155782307471	2.375804691
64	TRST	2013	1194457109014	1045073685266	1.142940566
65	TSPC	2013	3991115858814	1347465965403	2.961941868
66	WIIM	2013	993885657065	409006110315	2.430001978
67	AMFG	2014	2263728000000	398238000000	5.684359604
68	ARNA	2014	507458459958	315672702842	1.607546219
69	ASII	2014	97241000000000	73523000000000	1.32259293
70	AUTO	2014	5138080000000	3857809000000	1.331864797
71	BATA	2014	490875888000	316233635000	1.552257046
72	CPIN	2014	10009670000000	4467240000000	2.240683285
73	DLTA	2014	854176144000	190952635000	4.473235701
74	DVLA	2014	925293721000	178583390000	5.181297774
75	EKAD	2014	296439331922	127248837925	2.329603451
76	GGRM	2014	58220600000000	23783134000000	2.447978471
77	HMSP	2014	20777514000000	13600230000000	1.527732546
78	ICBP	2014	13603527000000	6230997000000	2.183202303
79	INDF	2014	40995736000000	22681686000000	1.807437772
80	INTP	2014	16086773000000	3260559000000	4.933746943

No	Kode Emiten	Tahun	Aset Lancar	Hutang Lancar	CR
81	KAEF	2014	2040430857906	854811681427	2.386994589
82	KLBF	2014	8120805370192	2385920172489	3.403636661
83	LION	2014	488268612706	132155047433	3.694664882
84	LMSH	2014	107779916138	19357303490	5.567919943
85	MERK	2014	595338719000	129820145000	4.585873163
86	MLBI	2014	816494000000	1588801000000	0.513905769
87	MYOR	2014	6508768623440	3114337601362	2.089936756
88	ROTI	2014	420316388535	307608669233	1.366399684
89	SCCO	2014	1293776722303	826026927582	1.566264584
90	SKLT	2014	167419411740	141425302223	1.183800983
91	SMGR	2014	11648544675000	5273269122000	2.208979744
92	SMSM	2014	1133730000000	536800000000	2.112015648
93	SQBB	2014	366091435000	83717824000	4.372921052
94	TCID	2014	874017297803	486053837459	1.798190304
95	TOTO	2014	1115004308039	528814814904	2.10849673
96	TRIS	2014	387852596236	193749649372	2.001823474
97	TRST	2014	1182292914595	955175792503	1.237775207
98	TSPC	2014	3714700991066	1237332206210	3.002185648
99	WIIM	2014	999717333649	439445908771	2.274949689
100	AMFG	2015	2232181000000	479376000000	4.656430443
101	ARNA	2015	509178006985	498857920866	1.020687426
102	ASII	2015	105161000000000	76242000000000	1.37930537
103	AUTO	2015	4796770000000	3625907000000	1.322915894
104	BATA	2015	521210881000	210931517000	2.470995745
105	CPIN	2015	1736178000000	24916656000000	0.069679414
106	DLTA	2015	902006833000	140419495000	6.423658147
107	DVLA	2015	1043830034000	296298118000	3.522904705
108	EKAD	2015	84055202739	79594446891	1.056043556
109	GGRM	2015	42568431000000	24045086000000	1.770358858

No	Kode Emiten	Tahun	Aset Lancar	Hutang Lancar	CR
110	HMSP	2015	29807330000000	4538674000000	6.567409336
111	ICBP	2015	13961500000000	6002344000000	2.326007973
112	INDF	2015	42816745000000	25107538000000	1.705334271
113	INTP	2015	13133854000000	2687743000000	4.886573605
114	KAEF	2015	2100921793619	1092623765562	1.922822713
115	KLBF	2015	8748491608702	2365880490863	3.697774102
116	LION	2015	508345199844	133693524978	3.802317277
117	LMSH	2015	89126109044	11018274023	8.088935604
118	MERK	2015	483679971000	132435895000	3.652181842
119	MLBI	2015	709955000000	1215227000000	0.584215953
120	MYOR	2015	7454347029087	3151495162694	2.365336656
121	ROTI	2015	812990646097	395920006814	2.053421479
122	SCCO	2015	1380917436620	819137955839	1.68581791
123	SKLT	2015	189758915421	159132842277	1.192456018
124	SMGR	2015	10538703910000	6599189622000	1.596969403
125	SMSM	2015	1368558000000	571712000000	2.393789181
126	SQBB	2015	365466619000	102270152000	3.573541369
127	TCID	2015	1112672539416	222930621643	4.991115762
128	TOTO	2015	1348062605364	560119357447	2.406741684
129	TRIS	2015	430421697869	221092841410	1.946791652
130	TRST	2015	1137766718031	869536723928	1.308474601
131	TSPC	2015	4304922144352	1696486657073	2.537551431
132	WIIM	2015	988814005395	341705551602	2.893760434
133	AMFG	2016	1787723000000	885086000000	2.019829711
134	ARNA	2016	642892045913	476631150852	1.348825071
135	ASII	2016	11040300000000	8907900000000	1.23938302
136	AUTO	2016	4903902000000	3258146000000	1.505120397
137	BATA	2016	533900133000	207734690000	2.570105807
138	CPIN	2016	2251813000000	2420499400000	0.093030926

No	Kode Emiten	Tahun	Aset Lancar	Hutang Lancar	CR
139	DLTA	2016	12059433000000	5550257000000	2.172770198
140	DVLA	2016	174907377454	11533925524000	0.015164601
141	EKAD	2016	1068967094000	374427510000	2.854937379
142	GGRM	2016	41933173000000	21638565000000	1.93789066
143	HMSP	2016	33647496000000	6428478000000	5.234131003
144	ICBP	2016	11321715000000	4696583000000	2.41062811
145	INDF	2016	28985443000000	19219441000000	1.508131428
146	INTP	2016	14424622000000	3187742000000	4.525028061
147	KAEF	2016	2906737458288	1696208867581	1.713667175
148	KLBF	2016	9572529767897	2317161787100	4.131144325
149	LION	2016	542813854009	152533565561	3.558651842
150	LMSH	2016	98274709046	35476763264	2.770114858
151	MERK	2016	508615377000	120622129000	4.216600894
152	MLBI	2016	901258000000	1326261000000	0.679547992
153	MYOR	2016	8739782750141	3884051319005	2.250171801
154	ROTI	2016	949414338057	320501824382	2.962274364
155	SCCO	2016	2019188845621	1195158412670	1.689473817
156	SKLT	2016	222686872602	169302583936	1.315318806
157	SMGR	2016	10373158827000	8151673428000	1.27251894
158	SMSM	2016	1454387000000	508482000000	2.860252674
159	SQBB	2016	384080541000	113998435000	3.369173805
160	TCID	2016	1174482404487	223305151868	5.259540117
161	TOTO	2016	1290208433386	589149809544	2.189949674
162	TRIS	2016	462578104758	281765921952	1.641710614
163	TRST	2016	4385083916291	1653413220121	2.65214035
164	TSPC	2016	2874821874013	593525591694	4.843635918
165	WIIM	2016	996925071640	293711761060	3.394229322

3. Set Kesempatan Investasi

No	Kode Emiten	Tahun	Jumlah Lembar saham	Harga Penutupan	Total Ekuitas	IOS
1	AMFG	2012	434000000	8300	2457089000000	1.466043762
2	ARNA	2012	1835357744	1640	768489883529	3.916755138
3	ASII	2012	40483553140	7600	89814000000000	3.425690915
4	AUTO	2012	3855786400	3700	5410513000000	2.636794271
5	BATA	2012	13000000	60000	387488486000	2.012963038
6	CPIN	2012	16398000000	3650	8176464000000	7.320120287
7	DLTA	2012	16013181	255000	598211513000	6.825948793
8	DVLA	2012	1120000000	1690	841546479000	2.249192466
9	EKAD	2012	698775000	350	191977807039	1.273955848
10	GGRM	2012	1924088000	56300	26605713000000	4.071537357
11	HMSP	2012	4383000000	59900	13308420000000	19.72748831
12	ICBP	2012	5830954000	7800	11984361000000	3.79506602
13	INDF	2012	8780426500	5850	34140237000000	1.504544184
14	INTP	2012	3681231699	22450	19418738000000	4.255871398
15	KAEF	2012	5554000000	740	1441533689666	2.851102287
16	KLBF	2012	50780072110	1060	7371643614897	7.301882626
17	LION	2012	52016000	10400	371829387027	1.454878014
18	LMSH	2012	9600000	10500	97525195182	1.033579064
19	MERK	2012	22400000	152000	416741865000	8.170045503
20	MLBI	2012	21070000	740000	329853000000	47.26893495
21	MYOR	2012	766584000	20000	3067850327238	4.997531941
22	ROTI	2012	1012360000	6900	666607597550	10.47885447
23	SCCO	2012	205583400	4050	654044664731	1.27302127
24	SKLT	2012	690740500	180	129482560948	0.960231935
25	SMGR	2012	5931520000	15850	18164854648000	5.175631395

No	Kode Emiten	Tahun	Jumlah Lembar saham	Harga Penutupan	Total Ekuitas	IOS
26	SMSM	2012	1439668860	2525	918150000000	3.959226566
27	SQBB	2012	9268000	10500	325359028000	0.299097279
28	TCID	2012	201066667	11000	1096821575914	2.01649328
29	TOTO	2012	495360000	6650	898164900513	3.667638312
30	TRIS	2012	1000000000	340	256600725084	1.325015741
31	TRST	2012	2808000000	345	1352992459388	0.71601286
32	TSPC	2012	4500000000	3725	3353156079810	4.999021698
33	WIIM	2012	2099873760	760	656304363721	2.431652364
34	AMFG	2013	434000000	7000	2760727000000	1.100434777
35	ARNA	2013	7341430976	820	909942258556	6.61577517
36	ASII	2013	40483553140	6800	106188000000000	2.592460178
37	AUTO	2013	4819733000	3650	9425919000000	1.866345918
38	BATA	2013	1300000000	1060	396853165000	3.472317022
39	CPIN	2013	16398000000	3375	9950900000000	5.561632616
40	DLTA	2013	16013181	380000	676557993000	8.994068273
41	DVLA	2013	1120000000	2200	914702952000	2.693770688
42	EKAD	2013	698775000	390	237707561355	1.146460165
43	GGRM	2013	1924088000	42000	29416271000000	2.747176758
44	HMSP	2013	4383000000	62400	14155035000000	19.32169013
45	ICBP	2013	5830954000	10200	13265731000000	4.483411491
46	INDF	2013	8780426500	6600	37891756000000	1.529377918
47	INTP	2013	3681231699	20000	22977687000000	3.204179515
48	KAEF	2013	5554000000	590	1624354688981	2.017330342
49	KLBF	2013	46875122110	1250	8499957965575	6.8934344
50	LION	2013	52016000	12000	415784337843	1.501239809
51	LMSH	2013	9600000	8000	110468094376	0.695223362
52	MERK	2013	22400000	189000	512218622000	8.265220783
53	MLBI	2013	21070000	1200000	987533000000	25.60319503

No	Kode Emiten	Tahun	Jumlah Lembar saham	Harga Penutupan	Total Ekuitas	IOS
54	MYOR	2013	894347989	26000	3893900119177	5.971660033
55	ROTI	2013	5061800000	1020	787337649671	6.557588097
56	SCCO	2013	205583400	4400	707611129154	1.27833908
57	SKLT	2013	690740500	180	139650353636	0.890318476
58	SMGR	2013	5931520000	14150	21803975875000	3.849344197
59	SMSM	2013	1439668860	3450	1016753000000	4.885018846
60	SQBB	2013	9268000	10500	347052274000	0.280401563
61	TCID	2013	201066667	11900	1182990689957	2.022580023
62	TOTO	2013	495360000	7700	1035650413675	3.682972507
63	TRIS	2013	1002598000	400	302630624316	1.325177189
64	TRST	2013	2808000000	250	1709677140374	0.410603841
65	TSPC	2013	4500000000	3250	3862951854240	3.785964866
66	WIIM	2013	2099873760	670	781359304525	1.800599815
67	AMFG	2014	434000000	8050	3184642000000	1.097046387
68	ARNA	2014	7341430976	870	894728477056	7.138528741
69	ASII	2014	40483553140	7425	120324000000000	2.498174779
70	AUTO	2014	4819733000	4200	10136557000000	1.997017192
71	BATA	2014	1300000000	1105	429115605000	3.347582757
72	CPIN	2014	16398000000	3780	11240393000000	5.514437084
73	DLTA	2014	16013181	390000	764473253000	8.169207445
74	DVLA	2014	1120000000	1690	947454725000	1.997773561
75	EKAD	2014	698775000	515	267906054012	1.343266117
76	GGRM	2014	1924088000	60700	33228720000000	3.514795081
77	HMSP	2014	4383000000	68650	13498114000000	22.29148087
78	ICBP	2014	5830954000	13100	15039947000000	5.078840863
79	INDF	2014	8780426500	6750	40274198000000	1.471609165
80	INTP	2014	3681231699	25000	24784801000000	3.713194731
81	KAEF	2014	5554000000	1465	1902964421553	4.275755189

No	Kode Emiten	Tahun	Jumlah Lembar saham	Harga Penutupan	Total Ekuitas	IOS
82	KLBF	2014	46875122110	1830	9817475678446	8.737630351
83	LION	2014	52016000	9300	443978957043	1.089575964
84	LMSH	2014	9600000	6450	115951209812	0.534017714
85	MERK	2014	22400000	160000	553690856000	6.472926112
86	MLBI	2014	2107000000	11950	553797000000	45.46548645
87	MYOR	2014	894347989	20900	4100554992789	4.558376367
88	ROTI	2014	5061800000	1385	960122354744	7.30177041
89	SCCO	2014	205583400	3950	814392519881	0.997129038
90	SKLT	2014	690740500	300	153368106620	1.351142389
91	SMGR	2014	5931520000	16200	25004930004000	3.842867146
92	SMSM	2014	1439668860	4750	1146837000000	5.962858789
93	SQBB	2014	9268000	10500	368878943000	0.263810125
94	TCID	2014	201066667	17525	1283504442268	2.745369025
95	TOTO	2014	990720000	3975	1231192322624	3.198616437
96	TRIS	2014	1043763025	356	310424237329	1.197005878
97	TRST	2014	2808000000	380	1761493183162	0.605758802
98	TSPC	2014	4500000000	2865	4132338998550	3.119903765
99	WIIM	2014	2099873760	625	846390403028	1.550609619
100	AMFG	2015	434000000	6550	3390223000000	0.838499414
101	ARNA	2015	7341430976	500	948088201259	3.871702531
102	ASII	2015	40483553140	6000	126533000000000	1.919667745
103	AUTO	2015	4819733000	1600	10143426000000	0.760253271
104	BATA	2015	1300000000	900	547187208000	2.13820788
105	CPIN	2015	16398000000	2600	12786663000000	3.334317953
106	DLTA	2015	800659050	5200	849621481000	4.900331681
107	DVLA	2015	1120000000	1300	973517334000	1.495607679
108	EKAD	2015	698775000	400	291961416611	0.957352527
109	GGRM	2015	1924088000	55000	38007909000000	2.784284713

No	Kode Emiten	Tahun	Jumlah Lembar saham	Harga Penutupan	Total Ekuitas	IOS
110	HMSP	2015	4652723076	94000	32016060000000	13.66051816
111	ICBP	2015	5830954000	13475	16386911000000	4.794808805
112	INDF	2015	8780426500	5175	43121593000000	1.053734428
113	INTP	2015	3681231699	22325	23865950000000	3.443546043
114	KAEF	2015	5554000000	870	2056559640523	2.349545282
115	KLBF	2015	46875122110	1320	10938285985269	5.656751091
116	LION	2015	520160000	1050	454599496171	1.20142676
117	LMSH	2015	96000000	575	112441377144	0.490922482
118	MERK	2015	448000000	6775	473543282000	6.409551387
119	MLBI	2015	2107000000	8200	766480000000	22.54122743
120	MYOR	2015	894347989	30500	5194459927187	5.251289652
121	ROTI	2015	5061800000	1265	1188534951872	5.38745368
122	SCCO	2015	205583400	3725	922352503822	0.830266261
123	SKLT	2015	690740500	370	152044668111	1.680913827
124	SMGR	2015	5931520000	11.4	27440798401000	0.00246419
125	SMSM	2015	1439668860	4760	1440248000000	4.75808595
126	SQBB	2015	9268000	10500	354053487000	0.274856776
127	TCID	2015	201066667	16500	1714871478033	1.934605624
128	TOTO	2015	1032000000	6950	1491542919106	4.808711776
129	TRIS	2015	1045446325	300	337810852786	0.928430496
130	TRST	2015	2808000000	310	1956920690054	0.444821297
131	TSPC	2015	4500000000	1750	4337140975120	1.81571225
132	WIIM	2015	2099873760	430	943708980906	0.95680526
133	AMFG	2016	434000000	6700	3599264000000	0.80788739
134	ARNA	2016	7341430976	520	894728477056	4.266706834
135	ASII	2016	40483553140	8275	139906000000000	2.394474878
136	AUTO	2016	4819733000	2050	10536558000000	0.937730581
137	BATA	2016	1300000000	790	557155279000	1.843292236

No	Kode Emiten	Tahun	Jumlah Lembar saham	Harga Penutupan	Total Ekuitas	IOS
138	CPIN	2016	16398000000	3090	14157243000000	3.579073976
139	DLTA	2016	800659050	5000	1012374008000	3.954363919
140	DVLA	2016	1120000000	1755	1079579612000	1.820708707
141	EKAD	2016	698775000	590	592004807725	0.696408618
142	GGRM	2016	1924088000	63900	39564228000000	3.107585549
143	HMSP	2016	1.16318E+11	3830	34175014000000	13.03578792
144	ICBP	2016	11661908000	8575	18500823000000	5.405211492
145	INDF	2016	8780426500	7925	43941423000000	1.583582762
146	INTP	2016	3681231699	15400	26138703000000	2.168851613
147	KAEF	2016	5554000000	2750	2271407409194	6.724245038
148	KLBF	2016	46875122110	1515	12463847141085	5.697743978
149	LION	2016	520160000	1050	470603093171	1.160570357
150	LMSH	2016	96000000	590	117316469122	0.482796665
151	MERK	2016	448000000	9200	582672469000	7.07361377
152	MLBI	2016	2107000000	11750	820640000000	30.16822236
153	MYOR	2016	22358699725	1645	6265255987065	5.870480172
154	ROTI	2016	5061800000	1600	1442751772026	5.613495098
155	SCCO	2016	205583400	7275	1220420673224	1.225494838
156	SKLT	2016	690740500	308	296151295872	0.718376306
157	SMGR	2016	5931520000	9.175	30574391457000	0.001779976
158	SMSM	2016	5758675440	980	1580055000000	3.571712334
159	SQBB	2016	9268000	10500	354829699000	0.27425551
160	TCID	2016	201066667	12500	1783158507325	1.409483973
161	TOTO	2016	10320000000	498	1523874519542	3.372561149
162	TRIS	2016	1045446325	336	346627180477	1.013394174
163	TRST	2016	2808000000	300	1932355184014	0.435944699
164	TSPC	2016	4500000000	1970	4635273142692	1.912508654
165	WIIM	2016	2099873760	440	991093391804	0.932247619

4. Ukuran Perusahaan (*Size*)

No	Kode Emiten	Tahun	Total Aset	Ln Total Aset
1	AMFG	2012	3115421000000	28.76738541
2	ARNA	2012	937359770277	27.56633301
3	ASII	2012	182274000000000	32.83653217
4	AUTO	2012	8881642000000	29.81500757
5	BATA	2012	574107994000	27.07608336
6	CPIN	2012	12348627000000	30.144566
7	DLTA	2012	745306835000	27.33706183
8	DVLA	2012	1074691476000	27.70305474
9	EKAD	2012	273893467429	26.33600506
10	GGRM	2012	41509325000000	31.35693922
11	HMSP	2012	26247527000000	30.89859289
12	ICBP	2012	17753480000000	30.50760267
13	INDF	2012	59324207000000	31.71403855
14	INTP	2012	22755160000000	30.75581305
15	KAEF	2012	2076347580785	28.3616315
16	KLBF	2012	9417957180958	29.87363932
17	LION	2012	433497042140	26.79515081
18	LMSH	2012	128547715366	25.579566
19	MERK	2012	569430951000	27.06790337
20	MLBI	2012	1152048000000	27.77256234
21	MYOR	2012	8302506241903	29.74757854
22	ROTI	2012	1204944681223	27.81745477
23	SCCO	2012	1486921371360	28.0277289
24	SKLT	2012	249746467756	26.24371211
25	SMGR	2012	26579083786000	30.9111457

No	Kode Emiten	Tahun	Total Aset	Ln Total Aset
26	SMSM	2012	1441204473590	27.99650032
27	SQBB	2012	397144458000	26.70756593
28	TCID	2012	1261572952461	27.86338043
29	TOTO	2012	1522663914388	28.05148249
30	TRIS	2012	366248271960	26.62657728
31	TRST	2012	2188129039119	28.41406797
32	TSPC	2012	4632984970719	29.16422248
33	WIIM	2012	1207251153900	27.81936712
34	AMFG	2013	3539393000000	28.89497636
35	ARNA	2013	1135244802060	27.75786943
36	ASII	2013	213994000000000	32.99696909
37	AUTO	2013	12617678000000	30.16611996
38	BATA	2013	680685060000	27.24636557
39	CPIN	2013	15722197000000	30.38609465
40	DLTA	2013	867040802000	27.48835187
41	DVLA	2013	1190054288000	27.80502004
42	EKAD	2013	343601504089	26.5627484
43	GGRM	2013	5077025100000000	36.16350187
44	HMSP	2013	274045940000000	33.24431687
45	ICBP	2013	2890194800000	28.69234502
46	INDF	2013	78092789000000	31.98891884
47	INTP	2013	2660724100000	28.60961942
48	KAEF	2013	2471939548890	28.5360242
49	KLBF	2013	11315061275026	30.05715581
50	LION	2013	498567897161	26.93500562
51	LMSH	2013	141697598705	25.67696104
52	MERK	2013	696946318000	27.26997423
53	MLBI	2013	1782148000000	28.20884049

No	Kode Emiten	Tahun	Total Aset	Ln Total Aset
54	MYOR	2013	9709838250473	29.90416074
55	ROTI	2013	1822689047108	28.23133403
56	SCCO	2013	1762032300123	28.19748897
57	SKLT	2013	301989488699	26.43365805
58	SMGR	2013	30792884092000	31.05830474
59	SMSM	2013	1701103245176	28.16229812
60	SQBB	2013	421187982000	26.76634508
61	TCID	2013	1465952460752	28.01352629
62	TOTO	2013	1746177682568	28.18845033
63	TRIS	2013	449008821261	26.83030837
64	TRST	2013	3260919505192	28.81303033
65	TSPC	2013	5407957915805	29.31889267
66	WIIM	2013	1229011260881	27.83723111
67	AMFG	2014	3918391000000	28.99670223
68	ARNA	2014	1259175442875	27.86147821
69	ASII	2014	236029000000000	33.09497579
70	AUTO	2014	14360926000000	30.29553216
71	BATA	2014	774891087000	27.37598832
72	CPIN	2014	20862439000000	30.66897148
73	DLTA	2014	991947134000	27.62293565
74	DVLA	2014	1236247525000	27.84310172
75	EKAD	2014	411348790570	26.74270733
76	GGRM	2014	58220600000000	31.69526036
77	HMSP	2014	28380630000000	30.97672799
78	ICBP	2014	24910211000000	30.84629892
79	INDF	2014	85938885000000	32.08465752
80	INTP	2014	28884973000000	30.99434261
81	KAEF	2014	2968184626297	28.71897164

No	Kode Emiten	Tahun	Total Aset	Ln Total Aset
82	KLBF	2014	12425032367729	30.15073429
83	LION	2014	600102716315	27.12036667
84	LMSH	2014	139915598255	25.66430521
85	MERK	2014	716599526000	27.29778298
86	MLBI	2014	2231051000000	28.43349389
87	MYOR	2014	10291108029343	29.96230134
88	ROTI	2014	2142894276216	28.3931785
89	SCCO	2014	1656007190010	28.13543051
90	SKLT	2014	331574891637	26.52711954
91	SMGR	2014	34314666027000	31.16659396
92	SMSM	2014	1749395000000	28.19029113
93	SQBB	2014	459352720000	26.85308421
94	TCID	2014	1853235343636	28.24795406
95	TOTO	2014	2027288693678	28.3377204
96	TRIS	2014	523900642605	26.98456789
97	TRST	2014	3261285495052	28.81314256
98	TSPC	2014	5592730492960	29.35248874
99	WIIM	2014	1332907675785	27.91838389
100	AMFG	2015	4270275000000	29.08269934
101	ARNA	2015	1430779475454	27.9892405
102	ASII	2015	245345000000000	33.1336865
103	AUTO	2015	14339110000000	30.29401189
104	BATA	2015	795257974000	27.40193239
105	CPIN	2015	24916656000000	30.84655761
106	DLTA	2015	1038321916000	27.66862698
107	DVLA	2015	1376278237000	27.95040404
108	EKAD	2015	389691595500	26.68862148
109	GGRM	2015	63505413000000	31.78214626

No	Kode Emiten	Tahun	Total Aset	Ln Total Aset
110	HMSP	2015	38010724000000	31.26888945
111	ICBP	2015	26560624000000	30.91045093
112	INDF	2015	91831526000000	32.15097678
113	INTP	2015	27638360000000	30.95022578
114	KAEF	2015	3434879313034	28.86500291
115	KLBF	2015	13696417381439	30.24815541
116	LION	2015	639330150373	27.18368683
117	LMSH	2015	133782751041	25.61948306
118	MERK	2015	641646818000	27.18730386
119	MLBI	2015	2100853000000	28.37336457
120	MYOR	2015	11342715686221	30.05959686
121	ROTI	2015	2706323637034	28.62661224
122	SCCO	2015	1773144328632	28.20377554
123	SKLT	2015	377110748359	26.65580474
124	SMGR	2015	38153118932000	31.27262862
125	SMSM	2015	2220108000000	28.42857696
126	SQBB	2015	464027522000	26.8632097
127	TCID	2015	2082096848703	28.3643966
128	TOTO	2015	2439540859205	28.52283097
129	TRIS	2015	577786346557	27.08246999
130	TRST	2015	3357359499954	28.84217592
131	TSPC	2015	6284729099203	29.46914385
132	WIIM	2015	1342700045391	27.92570366
133	AMFG	2016	5504890000000	29.3366579
134	ARNA	2016	1543216299146	28.06488986
135	ASII	2016	26185500000000	33.19881203
136	AUTO	2016	14612274000000	30.31288298
137	BATA	2016	804742917000	27.41378871

No	Kode Emiten	Tahun	Total Aset	Ln Total Aset
138	CPIN	2016	24204994000000	30.81758009
139	DLTA	2016	1197796650000	27.81150486
140	DVLA	2016	1531365558000	28.05718097
141	EKAD	2016	702508630708	27.27792352
142	GGRM	2016	62951634000000	31.77338783
143	HMSP	2016	42508277000000	31.38071993
144	ICBP	2016	28901948000000	30.99493011
145	INDF	2016	82174515000000	32.03986633
146	INTP	2016	30150580000000	31.03722528
147	KAEF	2016	4612562541064	29.15980468
148	KLBF	2016	15226009210657	30.35402621
149	LION	2016	685812995987	27.25387083
150	LMSH	2016	162828169250	25.81596131
151	MERK	2016	743934894000	27.33521936
152	MLBI	2016	2275038000000	28.45301787
153	MYOR	2016	12922421859142	30.18998505
154	ROTI	2016	2919640858718	28.70248173
155	SCCO	2016	2449935491586	28.52708281
156	SKLT	2016	568239939951	27.0658096
157	SMGR	2016	44226895982000	31.42035423
158	SMSM	2016	2254740000000	28.44405578
159	SQBB	2016	479233790000	26.89545439
160	TCID	2016	2185101038101	28.41268319
161	TOTO	2016	2581440938262	28.57936886
162	TRIS	2016	639701164511	27.18426697
163	TRST	2016	3290596224286	28.82208989
164	TSPC	2016	6585807349438	29.51593805
165	WIIM	2016	1353634132275	27.93381404

5. Kebijakan Dividen (Dividend Payout Ratio)

No	Kode Emiten	Tahun	DPS	EPS	DPR
1	AMFG	2012	80	798.6382488	0.10017051
2	ARNA	2012	15.16683396	86.45962873	0.17542099
3	ASII	2012	241.4313775	561.7589919	0.4297775
4	AUTO	2012	81.49465956	294.5998253	0.27662834
5	BATA	2012	2795	5334.107538	0.52398644
6	CPIN	2012	42.31479449	163.4877424	0.25882549
7	DLTA	2012	11749.38265	13327.83767	0.88156706
8	DVLA	2012	31.5	132.9545438	0.23692308
9	EKAD	2012	7	51.80172068	0.13513065
10	GGRM	2012	1029.904557	2114.617938	0.48704049
11	HMSP	2012	1550	2269.061373	0.68310184
12	ICBP	2012	174.5112378	391.423256	0.44583768
13	INDF	2012	243.6872514	544.3295949	0.44768327
14	INTP	2012	293.0000305	1293.965822	0.22643568
15	KAEF	2012	6.18528943	37.04789294	0.16695388
16	KLBF	2012	19.50050674	34.95660353	0.55784901
17	LION	2012	300	1641.297325	0.18278224
18	LMSH	2012	100	4300.261982	0.0232544
19	MERK	2012	8270	4812.864063	1.71831157
20	MLBI	2012	31030.84955	21518.98434	1.44202203
21	MYOR	2012	130	971.0982806	0.13386905
22	ROTI	2012	28.62927542	147.3285669	0.19432264
23	SCCO	2012	170	825.6583396	0.2058963
24	SKLT	2012	2	11.52776444	0.17349418
25	SMGR	2012	333.1427435	830.5864006	0.40109342
26	SMSM	2012	157.8302344	176.8708142	0.89234753

No	Kode Emiten	Tahun	DPS	EPS	DPR
27	SQBB	2012	11	13.20787168	0.83283668
28	TCID	2012	370	747.8805623	0.4947314
29	TOTO	2012	200	476.311457	0.41989332
30	TRIS	2012	6.27425	44.39303456	0.14133411
31	TRST	2012	20	21.88499243	0.91386826
32	TSPC	2012	75	141.150243	0.53134871
33	WIIM	2012	34.34606839	36.81258608	0.93299798
34	AMFG	2013	80	779.6267281	0.10261321
35	ARNA	2013	10.0857326	32.37759977	0.31150341
36	ASII	2013	247.6561275	550.7668737	0.4496569
37	AUTO	2013	113.074106	219.5173467	0.51510328
38	BATA	2013	26.93	34.13359923	0.7889587
39	CPIN	2013	46.00329308	154.2072204	0.29832127
40	DLTA	2013	11999.58846	16892.21286	0.71036214
41	DVLA	2013	47	112.3182795	0.4184537
42	EKAD	2013	8	56.45687499	0.14170108
43	GGRM	2013	816.9974554	2278.446724	0.3585765
44	HMSP	2013	2269	2468.283368	0.91926236
45	ICBP	2013	191.4746712	622.7627589	0.30746005
46	INDF	2013	247.9123309	389.1194807	0.63711108
47	INTP	2013	450.6654662	1361.580691	0.33098697
48	KAEF	2013	5.540150791	38.82649081	0.14268997
49	KLBF	2013	20.79754586	42.03620942	0.49475312
50	LION	2013	400	1245.027507	0.32127804
51	LMSH	2013	150	1498.218666	0.1001189
52	MERK	2013	3570	7832.355223	0.45580159
53	MLBI	2013	24068.96061	8126.672995	2.96172377
54	MYOR	2013	204.2989108	1183.453144	0.17262949
55	ROTI	2013	7.366	31.21720948	0.23595959

No	Kode Emiten	Tahun	DPS	EPS	DPR
56	SCCO	2013	250	51.05583147	4.89660031
57	SKLT	2013	3	16.56195661	0.18113802
58	SMGR	2013	372.8159153	902.6857401	0.41300743
59	SMSM	2013	110.130779	234930.9634	0.00046878
60	SQBB	2013	12.5	14.60166953	0.85606649
61	TCID	2013	370	798.5599166	0.46333405
62	TOTO	2013	200	477.5466593	0.41880724
63	TRIS	2013	14.08804	48.0703507	0.2930713
64	TRST	2013	10	11.73986907	0.85179826
65	TSPC	2013	75	141.8966908	0.52855355
66	WIIM	2013	3.604973337	63.01436324	0.05720876
67	AMFG	2014	80	1056.762673	0.0757029
68	ARNA	2014	16.06095542	35.64033416	0.45063987
69	ASII	2014	247.6561275	546.5182348	0.45315254
70	AUTO	2014	91.19509317	198.4360959	0.45956908
71	BATA	2014	29.63	54.44726154	0.54419633
72	CPIN	2014	46.0032321	106.5156726	0.43189167
73	DLTA	2014	12499.58843	17989.7693	0.69481649
74	DVLA	2014	22	72.25846071	0.30446262
75	EKAD	2014	9	58.32503779	0.15430766
76	GGRM	2014	822.6593586	2804.078088	0.29337962
77	HMSP	2014	2430	2322.857175	1.04612545
78	ICBP	2014	193.5206486	434.1795528	0.44571571
79	INDF	2014	197.5566904	586.1131005	0.3370624
80	INTP	2014	902.6622804	1432.675102	0.63005372
81	KAEF	2014	9.696757844	42.58751726	0.22769014
82	KLBF	2014	17.26995532	45.24981453	0.38165804
83	LION	2014	400	942.0491791	0.42460628
84	LMSH	2014	200	771.1578579	0.25935027

No	Kode Emiten	Tahun	DPS	EPS	DPR
85	MERK	2014	6250	8101.439018	0.77146788
86	MLBI	2014	579.8732795	377.258187	1.53707275
87	MYOR	2014	230	458.238598	0.50192193
88	ROTI	2014	3.12	37.25503202	0.08374708
89	SCCO	2014	150	669.4037589	0.22408001
90	SKLT	2014	4	23.85948845	0.16764819
91	SMGR	2014	409.0929104	939.6541323	0.43536541
92	SMSM	2014	180.2039394	292.0366007	0.61705943
93	SQBB	2014	14	16.09453213	0.86986064
94	TCID	2014	370	866.9482451	0.42678442
95	TOTO	2014	100	296.5559481	0.3372045
96	TRIS	2014	15.35340944	33.9531715	0.45219368
97	TRST	2014	5	10.71384514	0.46668586
98	TSPC	2014	75	129.8429027	0.5776211
99	WIIM	2014	18.92550394	53.48170171	0.35386877
100	AMFG	2015	80	786.5115207	0.10171498
101	ARNA	2015	12.01014789	9.699736139	1.23819326
102	ASII	2015	261.587711	385.6627887	0.67828092
103	AUTO	2015	62.13435475	66.95412381	0.92801386
104	BATA	2015	5.62	99.63034308	0.05640852
105	CPIN	2015	18.00152458	111.7574094	0.16107679
106	DLTA	2015	127.4938265	239.8589	0.53153678
107	DVLA	2015	69.74533125	96.3343125	0.72399262
108	EKAD	2015	9	67.31817317	0.13369347
109	GGRM	2015	814.9143906	3353.710433	0.24298889
110	HMSP	2015	2632.971015	2227.364025	1.1821018
111	ICBP	2015	226.456597	501.3155652	0.45172465
112	INDF	2015	285.694778	422.4738969	0.67624244
113	INTP	2015	1350.000056	1183.47916	1.14070454

No	Kode Emiten	Tahun	DPS	EPS	DPR
114	KAEF	2015	8.448890141	47.81234463	0.17670939
115	KLBF	2015	19.34474035	43.89736366	0.44068114
116	LION	2015	40	88.4701582	0.45212986
117	LMSH	2015	10	20.2546187	0.49371455
118	MERK	2015	490	318.1818348	1.53999992
119	MLBI	2015	138.0830565	235.8372093	0.58550157
120	MYOR	2015	166.708798	1397.926919	0.1192543
121	ROTI	2015	5.53	53.44713352	0.10346673
122	SCCO	2015	200	773.9907314	0.25840103
123	SKLT	2015	5	29.05112969	0.17211035
124	SMGR	2015	377.0190337	762.9479523	0.49416088
125	SMSM	2015	146.5003556	320.4257679	0.45720529
126	SQBB	2015	16	14.66867793	1.09075951
127	TCID	2015	390	2707.929097	0.1440215
128	TOTO	2015	117.2	276.3922293	0.42403508
129	TRIS	2015	16.76434122	40.21747985	0.41684216
130	TRST	2015	5	9.014994089	0.55463153
131	TSPC	2015	64.96834172	117.6041448	0.55243241
132	WIIM	2015	13.51876412	62.42332948	0.21656589
133	AMFG	2016	80	6001.013825	0.01333108
134	ARNA	2016	5.054677419	12.44660765	0.40610884
135	ASII	2016	201.1681132	452.0848241	0.44497869
136	AUTO	2016	26.74919959	100.3003693	0.26669094
137	BATA	2016	24.67	32.48589462	0.75940651
138	CPIN	2016	29	135.7117941	0.21368813
139	DLTA	2016	120	317.8747158	0.37750722
140	DVLA	2016	34.87266607	135.78875	0.25681558
141	EKAD	2016	10	129.7782856	0.07705449
142	GGRM	2016	2611.297404	3467.971319	0.75297549

No	Kode Emiten	Tahun	DPS	EPS	DPR
143	HMSP	2016	89.00000134	109.7183631	0.81116778
144	ICBP	2016	132.4304736	311.3813794	0.42529991
145	INDF	2016	223.7605428	599.8462603	0.37302982
146	INTP	2016	414.9999579	1051.365227	0.39472483
147	KAEF	2016	9.03526907	48.90132295	0.18476533
148	KLBF	2016	19.24283036	50.15208127	0.38368957
149	LION	2016	40	81.40844558	0.49134951
150	LMSH	2016	5	65.13348761	0.07676543
151	MERK	2016	100	343.3992121	0.29120626
152	MLBI	2016	439.1884196	466.1267205	0.9422082
153	MYOR	2016	12.29591837	62.10898419	0.19797326
154	ROTI	2016	10.60853274	55.27230804	0.19193215
155	SCCO	2016	225	1656.717568	0.13581072
156	SKLT	2016	6	29.88983717	0.20073713
157	SMGR	2016	306.583218	764.5657138	0.40099002
158	SMSM	2016	55.60306417	87.2061649	0.63760474
159	SQBB	2016	16	16.13236045	0.99179535
160	TCID	2016	410	805.9993174	0.50868529
161	TOTO	2016	120	163.3377749	0.7346739
162	TRIS	2016	8.111888791	20.91027831	0.38793787
163	TRST	2016	5	12.03520902	0.41544771
164	TSPC	2016	50.95990024	121.2207858	0.42038913
165	WIIM	2016	25.03305231	50.61747468	0.49455356

LAMPIRAN 3

Tabulasi Perhitungan Data Penelitian 2012-2016

No	Kode Emiten	Tahun	ROA	CR	IOS	SIZE	DPR
1	AMFG	2012	0.111256	3.887013	1.466044	28.76739	0.100171
2	ARNA	2012	0.169289	1.166232	3.916755	27.56633	0.175421
3	ASII	2012	0.124768	1.399073	3.425691	32.83653	0.429778
4	AUTO	2012	0.127895	1.164936	2.636794	29.81501	0.276628
5	BATA	2012	0.120785	2.123837	2.012963	27.07608	0.523986
6	CPIN	2012	0.217099	3.31275	7.32012	30.14457	0.258825
7	DLTA	2012	0.286353	5.26464	6.825949	27.33706	0.881567
8	DVLA	2012	0.13856	4.310207	2.249192	27.70305	0.236923
9	EKAD	2012	0.13216	2.410914	1.273956	26.33601	0.135131
10	GGRM	2012	0.098019	2.170217	4.071537	31.35694	0.48704
11	HMSP	2012	0.378904	1.77579	19.72749	30.89859	0.683102
12	ICBP	2012	0.128559	2.719977	3.795066	30.5076	0.445838
13	INDF	2012	0.080565	2.048854	1.504544	31.71404	0.447683
14	INTP	2012	0.209332	6.035071	4.255871	30.75581	0.226436
15	KAEF	2012	0.099099	2.803132	2.851102	28.36163	0.166954

No	Kode Emiten	Tahun	ROA	CR	IOS	SIZE	DPR
16	KLBF	2012	0.18848	3.405397	7.301883	29.87364	0.557849
17	LMSH	2012	0.321145	4.067414	1.033579	25.57957	0.023254
18	MERK	2012	0.189326	3.871243	8.170046	27.0679	1.718312
19	MYOR	2012	0.089663	2.761123	4.997532	29.74758	0.133869
20	ROTI	2012	0.123781	1.124645	10.47885	27.81745	0.194323
21	SCCO	2012	0.114156	1.462059	1.273021	28.02773	0.205896
22	SKLT	2012	0.031883	1.414771	0.960232	26.24371	0.173494
23	SMGR	2012	0.185358	1.705896	5.175631	30.91115	0.401093
24	SMSM	2012	0.176682	2.051203	3.959227	27.9965	0.892348
25	SQBB	2012	0.340553	4.854632	0.299097	26.70757	0.832837
26	TOTO	2012	0.154956	2.154358	3.667638	28.05148	0.419893
27	TRIS	2012	0.12121	2.501232	1.325016	26.62658	0.141334
28	TRST	2012	0.028085	0.596063	0.716013	28.41407	0.913868
29	TSPC	2012	0.137099	3.093311	4.999022	29.16422	0.531349
30	WIIM	2012	0.064031	2.062216	2.431652	27.81937	0.932998
31	AMFG	2013	0.095598	0.417781	1.100435	28.89498	0.102613
32	ARNA	2013	0.20938	1.299329	6.615775	27.75787	0.311503

No	Kode Emiten	Tahun	ROA	CR	IOS	SIZE	DPR
33	ASII	2013	0.104195	1.241963	2.59246	32.99697	0.449657
34	AUTO	2013	0.083852	1.889864	1.866346	30.16612	0.515103
35	BATA	2013	0.06519	1.692635	3.472317	27.24637	0.788959
36	CPIN	2013	0.160836	3.792315	5.561633	30.38609	0.298321
37	DLTA	2013	0.311978	4.762271	8.994068	27.48835	0.710362
38	DVLA	2013	0.105707	4.24175	2.693771	27.80502	0.418454
39	EKAD	2013	0.114815	2.32871	1.14646	26.56275	0.141701
40	HMSP	2013	0.039477	1.752573	19.32169	33.24432	0.919262
41	INDF	2013	0.043751	1.667299	1.529378	31.98892	0.637111
42	KAEF	2013	0.087236	2.426697	2.01733	28.53602	0.14269
43	KLBF	2013	0.174144	2.839259	6.893434	30.05716	0.494753
44	LION	2013	0.129895	6.728855	1.50124	26.93501	0.321278
45	LMSH	2013	0.101504	4.19656	0.695223	25.67696	0.100119
46	MERK	2013	0.251734	3.979465	8.265221	27.26997	0.455802
47	MYOR	2013	0.109005	2.443362	5.97166	29.90416	0.172629
48	ROTI	2013	0.086693	1.136427	6.557588	28.23133	0.23596
49	SKLT	2013	0.037882	1.227532	0.890318	26.43366	0.181138

No	Kode Emiten	Tahun	ROA	CR	IOS	SIZE	DPR
50	SMGR	2013	0.173881	1.882372	3.849344	31.0583	0.413007
51	SMSM	2013	0.198826	2.111973	4.885019	28.1623	4.69E-04
52	SQBB	2013	3.55E-04	4.967925	0.280402	26.76635	0.856066
53	TCID	2013	0.109529	3.573201	2.02258	28.01353	0.463334
54	TOTO	2013	0.135472	2.194985	3.682973	28.18845	0.418807
55	TRIS	2013	0.107337	2.375805	1.325177	26.83031	0.293071
56	TRST	2013	0.010109	1.142941	0.410604	28.81303	0.851798
57	TSPC	2013	0.118073	2.961942	3.785965	29.31889	0.528554
58	WIIM	2013	0.107666	2.430002	1.8006	27.83723	0.057209
59	AMFG	2014	0.117047	5.68436	1.097046	28.9967	0.075703
60	ARNA	2014	0.207796	1.607546	7.138529	27.86148	0.45064
61	ASII	2014	0.093738	1.322593	2.498175	33.09498	0.453153
62	AUTO	2014	0.066598	1.331865	1.997017	30.29553	0.459569
63	BATA	2014	0.091344	1.552257	3.347583	27.37599	0.544196
64	CPIN	2014	0.083722	2.240683	5.514437	30.66897	0.431892
65	DLTA	2014	0.290412	4.473236	8.169207	27.62294	0.694816
66	DVLA	2014	0.065464	5.181298	1.997774	27.8431	0.304463

No	Kode Emiten	Tahun	ROA	CR	IOS	SIZE	DPR
67	EKAD	2014	0.099079	2.329603	1.343266	26.74271	0.154308
68	GGRM	2014	0.09267	2.447978	3.514795	31.69526	0.29338
69	HMSP	2014	0.358734	1.527733	22.29148	30.97673	1.046125
70	ICBP	2014	0.101632	2.183202	5.078841	30.8463	0.445716
71	INDF	2014	0.059884	1.807438	1.471609	32.08466	0.337062
72	INTP	2014	0.182587	4.933747	3.713195	30.99434	0.630054
73	KAEF	2014	0.079689	2.386995	4.275755	28.71897	0.22769
74	KLBF	2014	0.170711	3.403637	8.73763	30.15073	0.381658
75	LION	2014	0.081655	3.694665	1.089576	27.12037	0.424606
76	LMSH	2014	0.052911	5.56792	0.534018	25.66431	0.25935
77	MERK	2014	0.253241	4.585873	6.472926	27.29778	0.771468
78	MYOR	2014	0.039823	2.089937	4.558376	29.9623	0.501922
79	ROTI	2014	0.088001	1.3664	7.30177	28.39318	0.083747
80	SCCO	2014	0.083102	1.566265	0.997129	28.13543	0.22408
81	SKLT	2014	0.049704	1.183801	1.351142	26.52712	0.167648
82	SMGR	2014	0.162426	2.20898	3.842867	31.16659	0.435365
83	SMSM	2014	0.240332	2.112016	5.962859	28.19029	0.617059

No	Kode Emiten	Tahun	ROA	CR	IOS	SIZE	DPR
84	SQBB	2014	0.358783	4.372921	0.26381	26.85308	0.869861
85	TCID	2014	0.09406	1.79819	2.745369	28.24795	0.426784
86	TOTO	2014	0.144925	2.108497	3.198616	28.33772	0.337204
87	TRIS	2014	0.067645	2.001823	1.197006	26.98457	0.452194
88	TRST	2014	0.009225	1.237775	0.605759	28.81314	0.466686
89	TSPC	2014	0.104474	3.002186	3.119904	29.35249	0.577621
90	WIIM	2014	0.084256	2.27495	1.55061	27.91838	0.353869
91	AMFG	2015	0.079935	4.65643	0.838499	29.0827	0.101715
92	ARNA	2015	0.04977	1.020687	3.871703	27.98924	1.238193
93	ASII	2015	0.063637	1.379305	1.919668	33.13369	0.678281
94	AUTO	2015	0.022505	1.322916	0.760253	30.29401	0.928014
95	BATA	2015	0.162865	2.470996	2.138208	27.40193	0.056409
96	CPIN	2015	0.073549	0.069679	3.334318	30.84656	0.161077
97	DLTA	2015	0.184957	6.423658	4.900332	27.66863	0.531537
98	DVLA	2015	0.078396	3.522905	1.495608	27.9504	0.723993
99	EKAD	2015	0.120711	1.056044	0.957353	26.68862	0.133693
100	GGRM	2015	0.101611	1.770359	2.784285	31.78215	0.242989

No	Kode Emiten	Tahun	ROA	CR	IOS	SIZE	DPR
101	HMSP	2015	0.272642	6.567409	13.66052	31.26889	1.182102
102	ICBP	2015	0.110056	2.326008	4.794809	30.91045	0.451725
103	INDF	2015	0.040395	1.705334	1.053734	32.15098	0.676242
104	INTP	2015	0.157631	4.886574	3.443546	30.95023	1.140705
105	KAEF	2015	0.07731	1.922823	2.349545	28.865	0.176709
106	KLBF	2015	0.150236	3.697774	5.656751	30.24816	0.440681
107	LION	2015	0.071979	3.802317	1.201427	27.18369	0.45213
108	MERK	2015	0.222156	3.652182	6.409551	27.1873	1.54
109	MLBI	2015	0.236527	0.584216	22.54123	28.37336	0.585502
110	MYOR	2015	0.110223	2.365337	5.25129	30.0596	0.119254
111	ROTI	2015	0.099965	2.053421	5.387454	28.62661	0.103467
112	SCCO	2015	0.089739	1.685818	0.830266	28.20378	0.258401
113	SKLT	2015	0.053212	1.192456	1.680914	26.6558	0.17211
114	SMGR	2015	0.118613	1.596969	0.002464	31.27263	0.494161
115	SMSM	2015	0.207786	2.393789	4.758086	28.42858	0.457205
116	SQBB	2015	0.323703	3.573541	0.274857	26.86321	1.09076
117	TCID	2015	0.261503	4.991116	1.934606	28.3644	0.144021

No	Kode Emiten	Tahun	ROA	CR	IOS	SIZE	DPR
118	TOTO	2015	0.116922	2.406742	4.808712	28.52283	0.424035
119	TRIS	2015	0.072769	1.946792	0.92843	27.08247	0.416842
120	TRST	2015	0.00754	1.308475	0.444821	28.84218	0.554632
121	TSPC	2015	0.084207	2.537551	1.815712	29.46914	0.552432
122	WIIM	2015	0.097625	2.89376	0.956805	27.9257	0.216566
123	AMFG	2016	0.473114	2.01983	0.807887	29.33666	0.013331
124	ARNA	2016	0.059211	1.348825	4.266707	28.06489	0.406109
125	ASII	2016	0.069894	1.239383	2.394475	33.19881	0.444979
126	AUTO	2016	0.033083	1.50512	0.937731	30.31288	0.266691
127	BATA	2016	0.052478	2.570106	1.843292	27.41379	0.759407
128	CPIN	2016	0.09194	0.093031	3.579074	30.81758	0.213688
129	DLTA	2016	0.212481	2.17277	3.954364	27.8115	0.377507
130	DVLA	2016	0.099312	0.015165	1.820709	28.05718	0.256816
131	EKAD	2016	0.129089	2.854937	0.696409	27.27792	0.077054
132	GGRM	2016	0.105997	1.937891	3.107586	31.77339	0.752975
133	HMSP	2016	0.300229	5.234131	13.03579	31.38072	0.811168
134	ICBP	2016	0.125642	2.410628	5.405211	30.99493	0.4253

No	Kode Emiten	Tahun	ROA	CR	IOS	SIZE	DPR
135	INDF	2016	0.064094	1.508131	1.583583	32.03987	0.37303
136	INTP	2016	0.128366	4.525028	2.168852	31.03723	0.394725
137	KAEF	2016	0.058882	1.713667	6.724245	29.1598	0.184765
138	KLBF	2016	0.154399	4.131144	5.697744	30.35403	0.38369
139	LION	2016	0.061745	3.558652	1.16057	27.25387	0.49135
140	LMSH	2016	0.038401	2.770115	0.482797	25.81596	0.076765
141	MERK	2016	0.206796	4.216601	7.073614	27.33522	0.291206
142	MYOR	2016	0.107463	2.250172	5.87048	30.18999	0.197973
143	ROTI	2016	0.095826	2.962274	5.613495	28.70248	0.191932
144	SCCO	2016	0.139021	1.689474	1.225495	28.52708	0.135811
145	SKLT	2016	0.036333	1.315319	0.718376	27.06581	0.200737
146	SMGR	2016	0.10254	1.272519	0.00178	31.42035	0.40099
147	SMSM	2016	0.222727	2.860253	3.571712	28.44406	0.637605
148	SQBB	2016	0.344707	3.369174	0.274256	26.89545	0.991795
149	TCID	2016	0.074166	5.25954	1.409484	28.41268	0.508685
150	TOTO	2016	0.065299	2.18995	3.372561	28.57937	0.734674
151	TRIS	2016	0.034173	1.641711	1.013394	27.18427	0.387938

No	Kode Emiten	Tahun	ROA	CR	IOS	SIZE	DPR
152	TRST	2016	0.01027	2.65214	0.435945	28.82209	0.415448
153	TSPC	2016	0.082829	4.843636	1.912509	29.51594	0.420389
154	WIIM	2016	0.078522	3.394229	0.932248	27.93381	0.494554

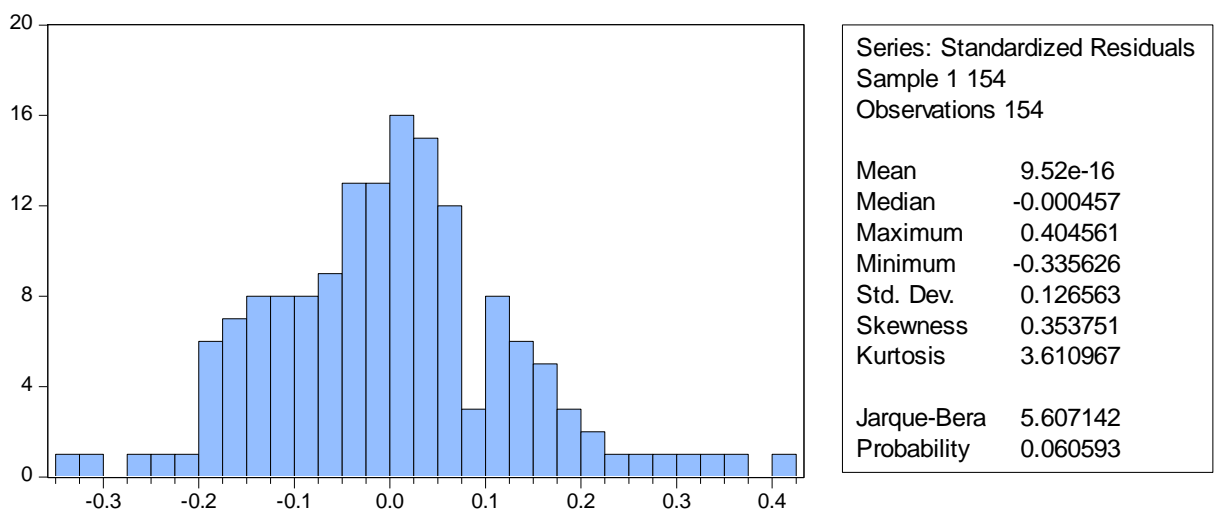
LAMPIRAN 4

Analisis statistik deskriptif

	ROA	CR	IOS	SIZE	DPR
Mean	0.128692	2.625450	3.682511	28.89709	0.440860
Median	0.105852	2.262561	2.614627	28.42132	0.419350
Maximum	0.473114	6.728855	22.54123	33.24432	1.718312
Minimum	0.000355	0.015165	0.001780	25.57957	0.000469
Std. Dev.	0.084723	1.400123	3.812169	1.821747	0.297873
Skewness	1.356753	0.809907	2.719740	0.498224	1.287155
Kurtosis	4.919601	3.131466	12.46556	2.414053	5.389934
Jarque-Bera	70.89124	16.94693	764.7687	8.574212	79.17434
Probability	0.000000	0.000209	0.000000	0.013745	0.000000
Sum	19.81854	404.3193	567.1067	4450.152	67.89249
Sum Sq. Dev.	1.098229	299.9328	2223.493	507.7704	13.57545
Observations	154	154	154	154	154

LAMPIRAN 5

Hasil Uji Normalitas



LAMPIRAN 6

Hasil Uji Analisis Regresi Berganda

Variable	Coefficient	Std. Error	t-Statistic	Prob.
C	-2.136279	0.945684	-2.258977	0.0253
SQRT_ROA	-0.900963	0.138494	-6.505419	0.0000
SQRT_CR	0.146808	0.030121	4.873937	0.0000
LN_IOS	0.006163	0.016951	0.363566	0.7167
LN_SIZE	0.836418	0.276665	3.023211	0.0029

Ket. Dependend Variabel : SQRT_DPR

LAMPIRAN 7

Hasil Uji Heteroskedastisitas

Heteroskedasticity Test: Harvey

F-statistic	0.731001	Prob. F(3,150)	0.5350
Obs*R-squared	2.219041	Prob. Chi-Square(3)	0.5282
Scaled explained SS	2.988176	Prob. Chi-Square(3)	0.3935

LAMPIRAN 8

Hasil Uji Multikolinearitas

Variable	Coefficient Variance	Uncentered VIF	Centered VIF
C	0.894319	8373.307	NA
SQRT_ROA	0.019181	5.700800	3.295623
SQRT_CR	0.000907	32.16021	1.944922
LN_IOS	0.000287	4.161408	3.240344
LN_SIZE	0.076544	7895.270	2.044679

LAMPIRAN 9

Hasil Uji Autokolerasi

R-squared	0.554917	Mean dependent var	0.425491
Adjusted R-squared	0.542969	S.D. dependent var	0.715407
S.E. of regression	0.128250	Akaike info criterion	-1.237739
Sum squared resid	2.450769	Schwarz criterion	-1.139136
Log likelihood	100.3059	Hannan-Quinn criter.	-1.197687
F-statistic	46.44230	Durbin-Watson stat	2.089680
Prob(F-statistic)	0.000000	Weighted mean dep.	0.808561

LAMPIRAN 10

Uji Hipotesis

Variable	Coefficient	Std. Error	t-Statistic	Prob.
C	-2.136279	0.945684	-2.258977	0.0253
SQRT_ROA	-0.900963	0.138494	-6.505419	0.0000
SQRT_CR	0.146808	0.030121	4.873937	0.0000
LN_IOS	0.006163	0.016951	0.363566	0.7167
LN_SIZE	0.836418	0.276665	3.023211	0.0029

Ket. Dependend Variabel : SQRT_DPR