

# LAMPIRAN

**Lampiran 1:**

No	Kode perusahaan	Nama perusahaan
1	ALDO	Alkindo Naratama Tbk
2	ALMI	Alumindo Light Metal Tbk
3	ASII	Astra Internasional Tbk
4	AUTO	Astra Auto Part Tbk
5	BAJA	P.T. Sarana Central Bajatama
6	BRAM	PT. INDO KORDSA tbk
7	BRNA	Berlina Tbk
8	BTON	Bton Jaya Manunggal Tbk
9	DPNS	Duta Pertiwi Nusantara Tbk
10	GDST	Gunawan Dianjaya Steel Tbk
11	GGRM	Gudang Garam Tbk
12	GJTL	Gajah Tunggal Tbk
13	INAI	Indal Aluminium Industry Tbk
14	INDF	Indofood Sukses Makmur Tbk
15	INDS	Indospring Tbk
16	MERK	PT Merck Tbk
17	PSDN	Pt Prasida Aneka Niaga tbk
18	PTSN	Pt Prasida Aneka Niaga tbk
19	SKLT	PT Sekar Laut Tbk
20	TBIA	Chandra Asri Petro chemica Tbk
21	TCID	PT Mandom Indonesia Tbk
22	TRST	Pt Trias Santoso Tbk
23	ULTJ	PT Ultrajaya Milk Industry & Trading Company tbk

**Lampiran 2 : Tabulasi Data Perhitungan Variabel-Variabel**

NO	PERUSAHAAN	TAHUN	MOWN	DER	ROE	FSZ	DPR
1	ALDO	2012	14.32	0.960609353	0.131750067	184896742887	0.188333172
2	ALDO	2014	17.39	1.238167808	0.132108166	356814265668	0.039171865
3	ALMI	2012	1.6	2.200590855	0.02372775	1881568513922	0.010989929
4	ALMI	2013	1.6	3.186684273	0.039733883	2752078229707	0.234884115
5	ALMI	2014	1.6	4.011320565	0.003040334	3212438981224	0.62938492
6	ASII	2012	0.04	1.029460886	0.253212194	182274000000000	0.429513675
7	ASII	2013	0.04	1.015237127	0.209976645	213994000000000	0.449253263
8	ASII	2014	0.03	0.961611981	0.183878528	236029000000000	0.461062147
9	ASII	2015	0.04	0.939691622	0.123390736	245435000000000	0.677960674
10	AUTO	2012	0.07	0.619230391	0.207090884	8881642000000	0.276628336
11	AUTO	2013	0.06	0.32001242	0.110685451	12617678000000	0.515103283
12	AUTO	2014	0.06	0.418719098	0.094352451	14380926000000	0.45956803
13	BAJA	2014	77.79	4.175299649	0.074753376	974632970453	0.120828089
14	BRAM	2012	1.48	0.355553106	0.144597254	229933238	0.290609546
15	BRAM	2013	34.49	0.467681216	0.012019225	239028725	0.087268128
16	BRAM	2015	23.92	0.595302131	0.057026031	291835	0.122567891
17	BRNA	2012	15.88	1.552377516	0.180552968	770383930000	0.016514886
18	BRNA	2014	11.68	2.641314196	0.15557517	1334085916000	0.307620241
19	BTON	2012	9.58	0.282045116	0.218782961	145100528067	0.145386245
20	BTON	2015	9.58	0.228105969	0.042411691	183116245288	0.569279944
21	DPNS	2013	5.71	0.147451123	0.299037009	256372669050	0.381759283
22	DPNS	2014	5.71	0.138912446	0.061503351	268877322944	0.416970367
23	DPNS	2015	5.71	0.137536555	0.040859247	274483110371	0.460516255
24	GDST	2012	0.01	0.467947475	0.058758488	1163971056842	0.151724443
25	GGRM	2012	0.92	0.560165405	0.152926216	41509325000000	0.487041228
26	GGRM	2013	0.92	0.725924778	0.149030854	50770251000000	0.358577642
27	GGRM	2014	0.92	0.752117445	0.162368367	58220600000000	0.293379803
28	GGRM	2015	0.92	0.670847218	0.169776085	63505413000000	0.242989359
29	GJTL	2012	0.08	1.34919531	0.206675363	12869793000000	0.707088471
30	GJTL	2013	0.08	1.681661983	0.021020753	15350754000000	0.780129643
31	GJTL	2014	0.1	1.681281809	0.045103598	16042897000000	0.128948227
32	INAI	2013	10.72	5.063134286	0.039737397	765881409376	0.015778336
33	INAI	2014	10.72	5.152421557	0.151250566	897281657710	0.011489344
34	INAI	2015	10.72	4.546893069	0.119321014	1330259296537	0.038747996
35	INDF	2012	0.02	0.424472593	0.080564853	59324207000000	0.447683686
36	INDF	2013	0.02	1.035091509	0.089037175	78092789000000	0.637112246
37	INDF	2014	0.02	1.084459402	0.124824781	85938885000000	0.337062015

38	INDF	2015	0.02	1.129594169	0.086024211	91831526000000	0.520741199
39	INDS	2012	0.41	0.464735714	0.117958371	1664779358215	0.263969338
40	INDS	2013	0.44	0.253101548	0.084209792	2196518364473	0.996697689
41	INDS	2014	0.44	0.248505929	0.069822269	2282666078493	0.404686451
42	INDS	2015	0.44	0.330836959	0.001007702	2553928346219	0.183774944
43	MERK	2012	0.001	0.366387682	0.258692884	569430951	0.012871727
44	MERK	2013	0.001	0.360642288	0.342519287	696946318	0.452316954
45	PSDN	2012	20.567	0.666623872	0.062560608	682611125989	0.040976659
46	PSDN	2013	20.567	0.632742078	0.051059043	681832333141	0.62375257
47	PTSN	2013	70	5.271567076	0.276990186	78631009	0.069570577
48	SKLT	2012	0.12	0.928803894	0.061496264	249746467756	0.173494177
49	SKLT	2013	0.12	1.162468485	0.081923274	301989488699	0.181128519
50	SKLT	2014	0.12	1.161954652	0.107458554	331574891637	0.167648188
51	TBIA	2012	1.51	1.340479989	0.121147257	1687115	0.001843603
52	TBIA	2013	1.45	1.230079163	0.009717966	1907438	0.174807507
53	TCID	2012	6.806	0.150208001	0.137099648	1261572952461	0.494417279
54	TCID	2013	5.208	0.239191883	0.135375931	1465952460752	0.464206082
55	TCID	2014	6.825	0.443886973	0.13581129	1853235343638	0.426476028
56	TCID	2015	6.825	0.214141628	0.317501507	2062096848703	0.143787965
57	TRST	2012	1.9	0.617251467	0.08292818	2188129039119	0.498235686
58	TRST	2013	1.5	0.907330588	0.225051077	3260919505192	0.076850949
59	TRST	2014	1.19	0.851432368	0.037386487	3261285495652	0.212931259
60	ULTJ	2013	17.8	0.395243714	0.161341826	2811620982142	0.304493305
61	ULTJ	2014	17.9	0.287840115	0.125098757	2917083567355	0.174364423

**Lampiran 3 : Data Perhitungan Variabel Kebijakan Dividen**

NO	PERUSAHAAN	TAHUN	DIVIDEN	LABA BERSIH	DPR
1	ALDO	2012	2340000000	12424789394	0.188333172
2	ALDO	2014	825000000	21061034612	0.039171865
3	ALMI	2012	15330006788	13949141063	0.010989929
4	ALMI	2013	6134875321	26118732307	0.234884115
5	ALMI	2014	12266479613	1948963064	0.62938492
6	ASII	2012	976800000000	2274200000000	0.429513675
7	ASII	2013	1001700000000	2229700000000	0.449253263
8	ASII	2014	1020100000000	2212500000000	0.461062147
9	ASII	2015	1058500000000	1561300000000	0.677960674
10	AUTO	2012	314226000000	1135914000000	0.276628336
11	AUTO	2013	544987000000	1058015000000	0.515103283
12	AUTO	2014	439535000000	956409000000	0.45956803
13	BAJA	2014	1701000000	14077852427	0.120828089
14	BRAM	2012	900000000	54496290000	0.290609546
15	BRAM	2013	17533992000	56998824000	0.087268128
16	BRAM	2015	3600000000	24761627150	0.122567891
17	BRNA	2012	900000000	54496290000	0.016514886
18	BRNA	2014	17533992000	56998824000	0.307620241
19	BTON	2012	3600000000	24761627150	0.145386245
20	BTON	2015	3600000000	6323778025	0.569279944
21	DPNS	2013	45550539979	66813230321	0.381759283
22	DPNS	2014	6054353979	14519866284	0.416970367
23	DPNS	2015	4540310892	9859176172	0.460516255
24	GDST	2012	70690000	46591042719	0.151724443
25	GGRM	2012	1981630000000	4068711000000	0.487041228
26	GGRM	2013	1571980000000	4383932000000	0.358577642
27	GGRM	2014	1582870000000	5395293000000	0.293379803
28	GGRM	2015	1567970000000	6452834000000	0.242989359
29	GJTL	2012	34770000000	1132247000000	0.707088471
30	GJTL	2013	93873000000	120330000000	0.780129643
31	GJTL	2014	34799000000	269868000000	0.128948227
32	INAI	2013	7920000000	5019540731	0.015778336
33	INAI	2014	2534400000	22058700759	0.011489344
34	INAI	2015	11088000000	28615673167	0.038747996
35	INDF	2012	2139680000000	4779446000000	0.447683686
36	INDF	2013	2176780000000	3416635000000	0.637112246
37	INDF	2014	1734630000000	5146323000000	0.337062015

38	INDF	2015	1931690000000	3709501000000	0.520741199
39	INDS	2012	35389916000	134068283255	0.263969338
40	INDS	2013	147121000000	147608449013	0.996697689
41	INDS	2014	51661199915	127657349869	0.404686451
42	INDS	2015	35538750580	1933819152	0.183774944
43	MERK	2012	185699699	107808155	0.0128717
44	MERK	2013	79356638	175444757	0.452317
45	PSDN	2012	10499615000	25623404271	0.040976659
46	PSDN	2013	13299807500	21322248834	0.62375257
47	PTSN	2013	99221	1426192	0.069570577
48	SKLT	2012	1381481000	7962693771	0.173494177
49	SKLT	2013	2072221500	11440614188	0.181128519
50	SKLT	2014	2762962000	16480714984	0.167648188
51	TBIA	2012	161	87329	0.001843603
52	TBIA	2013	1.453	8312	0.174807507
53	TCID	2012	74347430785	150373851989	0.494417279
54	TCID	2013	74341891784	160148465833	0.464206082
55	TCID	2014	74340910433	174314394101	0.426476028
56	TCID	2015	78288848449	544474278014	0.143787965
57	TRST	2012	55902643125	112201202609	0.076850949
58	TRST	2013	29569530957	384764680986	0.212931259
59	TRST	2014	14022810098	65856042788	0.001843603
60	ULTJ	2013	989991228	325127420664	0.304493305
61	ULTJ	2014	49408062199	283360914211	0.174364423

Data disajikan dalam full rupiah

**Lampiran 4 : Data Perhitungan Variabel Kepemilikan Manajerial**

NO	PERUSAHAAN	TAHUN	JUMLAH SAHAM MANAJEMEN	MOWN
1	ALDO	2012	14.32	14.32
2	ALDO	2014	17.39	17.39
3	ALMI	2012	1.6	1.6
4	ALMI	2013	1.6	1.6
5	ALMI	2014	1.6	1.6
6	ASII	2012	0.04	0.04
7	ASII	2013	0.04	0.04
8	ASII	2014	0.03	0.03
9	ASII	2015	0.04	0.04
10	AUTO	2012	0.07	0.07
11	AUTO	2013	0.06	0.06
12	AUTO	2014	0.06	0.06
13	BAJA	2014	77.79	77.79
14	BRAM	2012	1.48	1.48
15	BRAM	2013	34.49	34.49
16	BRAM	2015	23.92	23.92
17	BRNA	2012	15.88	15.88
18	BRNA	2014	11.68	11.68
19	BTON	2012	9.58	9.58
20	BTON	2015	9.58	9.58
21	DPNS	2013	5.71	5.71
22	DPNS	2014	5.71	5.71
23	DPNS	2015	5.71	5.71
24	GDST	2012	0.01	0.01
25	GGRM	2012	0.92	0.92
26	GGRM	2013	0.92	0.92
27	GGRM	2014	0.92	0.92
28	GGRM	2015	0.92	0.92
29	GJTL	2012	0.08	0.08
30	GJTL	2013	0.08	0.08
31	GJTL	2014	0.1	0.1
32	INAI	2013	10.72	10.72
33	INAI	2014	10.72	10.72
34	INAI	2015	10.72	10.72
35	INDF	2012	0.02	0.02

36	INDF	2013	0.02	0.02
37	INDF	2014	0.02	0.02
38	INDF	2015	0.02	0.02
39	INDS	2012	0.41	0.41
40	INDS	2013	0.44	0.44
41	INDS	2014	0.44	0.44
42	INDS	2015	0.44	0.44
43	MERK	2012	0.001	0.001
44	MERK	2013	0.001	0.001
45	PSDN	2012	20.567	20.567
46	PSDN	2013	20.567	20.567
47	PTSN	2013	70	70
48	SKLT	2012	0.12	0.12
49	SKLT	2013	0.12	0.12
50	SKLT	2014	0.12	0.12
51	TBIA	2012	1.51	1.51
52	TBIA	2013	1.45	1.45
53	TCID	2012	6.806	6.806
54	TCID	2013	5.208	5.208
55	TCID	2014	6.825	6.825
56	TCID	2015	6.825	6.825
57	TRST	2012	1.9	1.9
58	TRST	2013	1.5	1.5
59	TRST	2014	1.19	1.19
60	ULTJ	2013	17.8	17.8
61	ULTJ	2014	17.9	17.9



**Lampiran 5 : Data Perhitungan Variabel Kebijakan Hutang**

NO	PERUSAHAAN	TAHUN	TOTAL HUTANG	EKUITAS	DER
1	ALDO	2012	90590989110	94305753777	0.960609353
2	ALDO	2014	197392000000	159422655622	1.238167808
3	ALMI	2012	1293690000000	587883021026	2.200590855
4	ALMI	2013	2094740000000	657341556453	3.186684273
5	ALMI	2014	2571400000000	641035778235	4.011320565
6	ASII	2012	9246000000000	8981400000000	1.029460886
7	ASII	2013	10780600000000	10618800000000	1.015237127
8	ASII	2014	11570500000000	12032400000000	0.961611981
9	ASII	2015	11890200000000	12653300000000	0.939691622
10	AUTO	2012	3396540000000	5485099000000	0.619230391
11	AUTO	2013	3058920000000	9558754000000	0.32001242
12	AUTO	2014	4244370000000	10136557000000	0.418719098
13	BAJA	2014	786309000000	188323968614	4.175299649
14	BRAM	2012	60310051	169623187	0.355553106
15	BRAM	2013	76167147	162861249	0.467681216
16	BRAM	2015	108901	182934	0.595302131
17	BRNA	2012	468554000000	301829932000	1.552377516
18	BRNA	2014	967711000000	366374815000	2.641314196
19	BTON	2012	31921571823	113178956244	0.282045116
20	BTON	2015	34011648533	149104596755	0.228105969
21	DPNS	2013	32944704261	223427964789	0.147451123
22	DPNS	2014	32794800672	236082522272	0.138912446
23	DPNS	2015	33187031327	241296079044	0.137536555
24	GDST	2012	371047000000	792924462467	0.467947475
25	GGRM	2012	1490360000000	2660571300000	0.560165405
26	GGRM	2013	2135400000000	2941627100000	0.725924778
27	GGRM	2014	2499190000000	3322872000000	0.752117445
28	GGRM	2015	2549750000000	3800790900000	0.670847218
29	GJTL	2012	739141000000	547838400000	1.34919531
30	GJTL	2013	962641000000	572434300000	1.681661983
31	GJTL	2014	1005960000000	598329200000	1.681281809
32	INAI	2013	639564000000	126317803126	5.063134286
33	INAI	2014	751440000000	145842103885	5.152421557
34	INAI	2015	1090440000000	239820902657	4.546893069
35	INDF	2012	2518150000000	5932420700000	0.424472593
36	INDF	2013	3971970000000	3837312900000	1.035091509
37	INDF	2014	4471050000000	4122837600000	1.084459402

38	INDF	2015	48709900000000	43121593000000	1.129594169
39	INDS	2012	528206000000	1136572861829	0.464735714
40	INDS	2013	443653000000	1752865614508	0.253101548
41	INDS	2014	454348000000	1828318551877	0.248505929
42	INDS	2015	634889000000	1919038917988	0.330836959
43	MERK	2012	152689086	416741865	0.366387682
44	MERK	2013	184727696	512218622	0.360642288
45	PSDN	2012	273034000000	409577291829	0.666623872
46	PSDN	2013	264233000000	417599854672	0.632742078
47	PTSN	2013	27142719	5148890	5.271567076
48	SKLT	2012	120263906808	129482560948	0.928803894
49	SKLT	2013	162339135063	139650353636	1.162468485
50	SKLT	2014	178206785017	153368106620	1.161954652
51	TBIA	2012	966285	720850	1.340479989
52	TBIA	2013	1052115	855323	1.230079163
53	TCID	2012	164751376547	1096821575914	0.150208001
54	TCID	2013	282961770795	1182990689957	0.239191883
55	TCID	2014	569730901368	1283504442268	0.443886973
56	TCID	2015	367225370670	1714871478033	0.214141628
57	TRST	2012	835136579731	1352992459388	0.617251467
58	TRST	2013	1709677140374	3260919505192	0.907330588
59	TRST	2014	1761493183162	3261285495652	0.851432368
60	ULTJ	2013	796474000000	2015146534086	0.395243714
61	ULTJ	2014	651986000000	2265097759730	0.287840115

Data disajikan dalam full rupiah

**Lampiran 6 : Data Perhitungan Variabel Profitabilitas**

NO	PERUSAHAAN	TAHUN	LABA BERSIH	EKUITAS	ROE
1	ALDO	2012	12424789394	94305753777	0.131750067
2	ALDO	2014	21061034612	159422655622	0.132108166
3	ALMI	2012	13949141063	587883021026	0.02372775
4	ALMI	2013	26118732307	657341556453	0.039733883
5	ALMI	2014	1948963064	641035778235	0.003040334
6	ASII	2012	2274200000000	8981400000000	0.253212194
7	ASII	2013	2229700000000	10618800000000	0.209976645
8	ASII	2014	2212500000000	12032400000000	0.183878528
9	ASII	2015	1561300000000	12653300000000	0.123390736
10	AUTO	2012	1135914000000	5485099000000	0.207090884
11	AUTO	2013	1058015000000	9558754000000	0.110685451
12	AUTO	2014	956409000000	10136557000000	0.094352451
13	BAJA	2014	14077852427	188323968614	0.074753376
14	BRAM	2012	24527047	169623187	0.144597254
15	BRAM	2013	1957466	162861249	0.012019225
16	BRAM	2015	10432	182934	0.057026031
17	BRNA	2012	54496290000	301829932000	0.180552968
18	BRNA	2014	56998824000	366374815000	0.15557517
19	BTON	2012	24761627150	113178956244	0.218782961
20	BTON	2015	6323778025	149104596755	0.042411691
21	DPNS	2013	66813230321	223427964789	0.299037009
22	DPNS	2014	14519866284	236082522272	0.061503351
23	DPNS	2015	9859176172	241296079044	0.040859247
24	GDST	2012	46591042719	792924462467	0.058758488
25	GGRM	2012	4068711000000	26605713000000	0.152926216
26	GGRM	2013	4383932000000	29416271000000	0.149030854
27	GGRM	2014	5395293000000	33228720000000	0.162368367
28	GGRM	2015	6452834000000	38007909000000	0.169776085
29	GJTL	2012	1132247000000	5478384000000	0.206675363
30	GJTL	2013	1203300000000	5724343000000	0.021020753
31	GJTL	2014	2698680000000	5983292000000	0.045103598
32	INAI	2013	5019540731	126317803126	0.039737397
33	INAI	2014	22058700759	145842103885	0.151250566
34	INAI	2015	28615673167	239820902657	0.119321014
35	INDF	2012	4779446000000	59324207000000	0.080564853
36	INDF	2013	3416635000000	38373129000000	0.089037175
37	INDF	2014	5146323000000	41228376000000	0.124824781

38	INDF	2015	3709501000000	43121593000000	0.086024211
39	INDS	2012	134068283255	1136572861829	0.117958371
40	INDS	2013	147608449013	1752865614508	0.084209792
41	INDS	2014	127657349869	1828318551877	0.069822269
42	INDS	2015	1933819152	1919038917988	0.001007702
43	MERK	2012	107808155	416741865	0.258692884
44	MERK	2013	175444757	512218622	0.342519287
45	PSDN	2012	25623404271	409577291829	0.062560608
46	PSDN	2013	21322248834	417599854672	0.051059043
47	PTSN	2013	1426192	5148890	0.276990186
48	SKLT	2012	7962693771	129482560948	0.061496264
49	SKLT	2013	11440614188	139650353636	0.081923274
50	SKLT	2014	16480714984	153368106620	0.107458554
51	TBIA	2012	87329	720850	0.121147257
52	TBIA	2013	8312	855323	0.009717966
53	TCID	2012	150373851989	1096821575914	0.137099648
54	TCID	2013	160148465833	1182990689957	0.135375931
55	TCID	2014	174314394101	1283504442268	0.13581129
56	TCID	2015	544474278014	1714871478033	0.317501507
57	TRST	2012	112201202609	1352992459388	0.08292818
58	TRST	2013	384764680986	3260919505192	0.225051077
59	TRST	2014	65856042788	3261285495652	0.037386487
60	ULTJ	2013	325127420664	2015146534086	0.161341826
61	ULTJ	2014	283360914211	2265097759730	0.125098757

Data disajikan dalam full rupiah

**Lampiran 7 : Data Perhitungan Variabel Ukuran Perusahaan**

NO	PERUSAHAAN	TAHUN	TOTAL ASET	FSZ
1	ALDO	2012	184896742887	11.26692926
2	ALDO	2014	356814265668	11.55244221
3	ALMI	2012	1881568513922	12.27452004
4	ALMI	2013	2752078229707	12.43966077
5	ALMI	2014	3212438981224	12.50683489
6	ASII	2012	182274000000000	14.26072472
7	ASII	2013	213994000000000	14.3304016
8	ASII	2014	236029000000000	14.37296537
9	ASII	2015	245435000000000	14.38993649
10	AUTO	2012	8881642000000	12.94849326
11	AUTO	2013	12617678000000	13.10097944
12	AUTO	2014	14380926000000	13.15778685
13	BAJA	2014	974632970453	11.9888411
14	BRAM	2012	229933238	8.361601755
15	BRAM	2013	239028725	8.378450095
16	BRAM	2015	291835	5.465137376
17	BRNA	2012	770383930000	11.88670721
18	BRNA	2014	1334085916000	12.1251838
19	BTON	2012	145100528067	11.16166899
20	BTON	2015	183116245288	11.26272687
21	DPNS	2013	256372669050	11.40887172
22	DPNS	2014	268877322944	11.42955418
23	DPNS	2015	274483110371	11.43851563
24	GDST	2012	1163971056842	12.06594218
25	GGRM	2012	41509325000000	13.61814567
26	GGRM	2013	50770251000000	13.70560931
27	GGRM	2014	58220600000000	13.76507668
28	GGRM	2015	63505413000000	13.80281074
29	GJTL	2012	12869793000000	13.10957156
30	GJTL	2013	15350754000000	13.18612971
31	GJTL	2014	16042897000000	13.2052828
32	INAI	2013	765881409376	11.88416153
33	INAI	2014	897281657710	11.95292879
34	INAI	2015	1330259296537	12.1239363
35	INDF	2012	59324207000000	13.77323194
36	INDF	2013	78092789000000	13.89261093
37	INDF	2014	8593885000000	13.93418971

38	INDF	2015	91831526000000	13.9629918
39	INDS	2012	1664779358215	12.22135668
40	INDS	2013	2196518364473	12.34173484
41	INDS	2014	2282666078493	12.35844239
42	INDS	2015	2553928346219	12.40720871
43	MERK	2012	569430951	8.755441069
44	MERK	2013	696946318	8.843199328
45	PSDN	2012	682611125989	11.83417336
46	PSDN	2013	681832333141	11.83367759
47	PTSN	2013	78631009	7.895593849
48	SKLT	2012	249746467756	11.39749935
49	SKLT	2013	301989488699	11.47999183
50	SKLT	2014	331574891637	11.52058164
51	TBIA	2012	1687115	6.227144687
52	TBIA	2013	1907438	6.28045043
53	TCID	2012	1261572952461	12.10091237
54	TCID	2013	1465952460752	12.16611989
55	TCID	2014	1853235343638	12.26793057
56	TCID	2015	2062096848703	12.31430906
57	TRST	2012	2188129039119	12.34007293
58	TRST	2013	3260919505192	12.51334008
59	TRST	2014	3260919505192	12.51338882
60	ULTJ	2013	2811620982142	12.44895678
61	ULTJ	2014	2917083567355	12.46494887

Data disajikan dalam full rupiah

**Lampiran 8:** Hasil Pengujian Statistic Deskriptif

	<b>N</b>	<b>Minimum</b>	<b>Maximum</b>	<b>Mean</b>	<b>Std.deviation</b>
DPR	61	.00	1.00	.3114	.22359
MOWN	61	.00	77.79	7.4870	14.42879
DER	61	.14	5.27	1.1881	1.31994
ROE	61	.00	.34	.1223	.08059
FSZ	61	5.47	14.39	11.9019	1.97358
Valid N(listwise)	61				

Sumber : Pengolahan Data SPSS 16.0

## Lampiran 9 : Hasil Uji Asumsi Klasik

### Uji Normalitas

		Unstandardized Residual
N		61
Normal	Mean	.0000000
Parameters <sup>a</sup>		
Std.Deviation		.19045488
Most Ekstrem	Absoulte	.102
Differences	Positive	.102
	Negatif	-.060
Kolmogorov-Smirnov Z		.797
<i>Asymp. Sig. (2-tailed)</i>		.549

Sumber : Pengelolahan Data SPSS 16.0



Uji Multikolinieritas

<b>Variabel</b>	<b>Tolerance</b>	<b>VIF</b>	<b>Keterangan</b>
MOWN	.701	1.427	Tidak terjadi multikolinieritas
DER	.779	1.285	Tidak terjadi multikolinieritas
ROE	.983	1.017	Tidak terjadi multikolinieritas
FSZ	.879	1.138	Tidak terjadi multikolinieritas
<i>Dependent Variabel : DPR</i>			

Sumber : Pengolahan Data SPSS 16.0

## Uji Autokorelasi

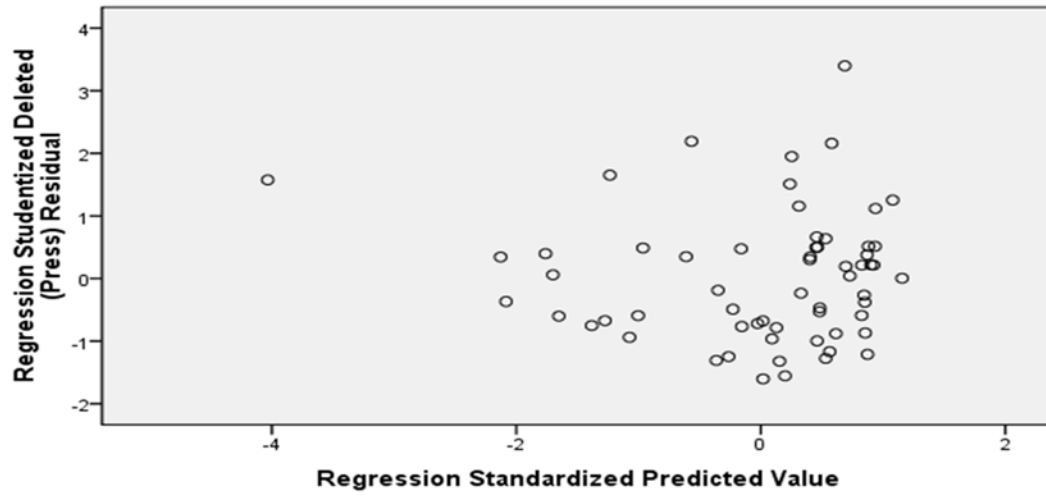
Model 1	R	R Square	Adjusted R Square	Std.Error of the Estimate	<i>Durbin-Watson</i>
1	.524 <sup>a</sup>	.274	.223	.19714	2.033

Sumber : Pengolahan Data SPSS 16.0

# Uji Heteroskedastisitas

## Scatterplot

Dependent Variable: DPR



Pengujian Regresi

Pengujian Regresi Linier Berganda

<i>Variable</i>	<i>coefficient</i>	<i>t-statistic</i>	<i>Sig</i>
C	-.103	-.598	.552
MOWN	-.001	-.520	.605
DER	-.046	-.2.127	.038
ROE	-.272	-.853	.397
FSZ	.043	3.124	.003
<i>Dependent variable: DPR</i>			