

# LAMPIRAN

**Lampiran 1 : Daftar Perusahaan Manufaktur Yang Menjadi Sampel Penelitian**

<b>NO</b>	<b>KODE PERUSAHAAN</b>	<b>NAMA PERUSAHAAN</b>
1	ACST	Acset Indonusa Tbk, PT
2	AGII	Aneka Gas Industri Tbk
3	AGRS	Bank Agris Tbk, PT
4	ALTO	Tri Banyan Tirta
5	APII	Arita Prima Indonesia Tbk, PT
6	ARTO	Bank Artos Indonesia Tbk
7	ASSA	Adi Sarana Armada
8	ATIC	Anabatic Technologies Tbk, PT
9	BBHI	Bank Harda Internasional Tbk, PT
10	BBMD	Bank Mestika Dharma Tbk, PT
11	BBYB	Bank Yudha Bakti Tbk, PT
12	BELL	Trisula Textile Industries Tbk
13	BIKA	Binakarya Jaya Abadi Tbk, PT
14	BIRD	Blue Bird Tbk, PT
15	BMAS	Bank Maspion Indonesia Tbk, PT
16	BOGA	Bintang Oto Global Tbk
17	BOLT	Garuda Metalindo Tbk, PT
18	BPII	Batavia Prosperindo Internasional Tbk, PT
19	BSSR	Baramulti Suksessarana
20	CAMP	Campina Ice Cream Industry Tbk
21	CINT	Chitose Internasional Tbk, PT
22	CLEO	Sariguna Primatira Tbk, PT
23	CSIS	Cahayasakti Investindo Sukses Tbk, PT
24	DAYA	Duta Intidaya Tbk
25	DMAS	Puradelta Lestari Tbk, PT
26	DNAR	Bank Dinar Indonesia Tbk, PT
27	DPUM	Dua Putra Utama Makmur Tbk
28	DWGL	Dwi Guna Laksana Tbk
29	DYAN	Dyandra Media Internasional Tbk, PT
30	ESSA	Surya Essa Perkasa
31	FINN	First Indo American Leasing Tbk, PT
32	FIRE	Alfa Energi Investama Tbk, PT
33	FORZ	Forza Land Indonesia Tbk, PT
34	GAMA	Gading Development
35	HOKI	Buyung Poetra Sembada Tbk, PT
36	HOTL	Saraswati Griya Lestari Tbk, PT
37	IBFN	Intan Baruprana Finance Tbk, PT
38	IBST	Inti Bangun Sejahtera

39	IDPR	Indonesia Pondasi Raya Tbk
40	IMJS	Indomobil Multijasa Tbk, PT
41	IMPC	Impack Pratama Industri Tbk, PT
42	IPCM	Jasa Armada Indonesia Tbk
43	JGLE	Graha Ardasentra Propertindo Tbk
44	JMAS	Asuransi Jiwa Syariah Jasa Mitra Abadi Tbk
45	KINO	Kino Indonesia Tbk
46	KMTR	Kirana Megatara Tbk, PT
47	KOBX	Kobexindo Tractors
48	KRAH	Grand Kartech Tbk, PT
49	LINK	Link Net Tbk, PT
50	MAPB	MAP Boga Adiperkasa Tbk, PT
51	MARI	Mahaka Radio Intrega Tbk
52	MARK	Mark Dynamics Indonesia Tbk, PT
53	MDIA	Intermedia Capital Indonesia Tbk, PT
54	MGNA	Magna Finance Tbk, PT
55	MIKA	Mitra Keluarga Karyasehat Tbk, PT
56	MINA	Sanurhasta Mitra Tbk, PT
57	MLPT	Multipolar Technology Tbk, PT
58	MMLP	Mega Manunggal Properti Tbk, PT
59	MPOW	Megapower Makmur Tbk, PT
60	MSKY	MNC Sky Vision
61	MTRA	Mitra Pemuda Tbk
62	MTWI	Malacca Trust Wuwungan Insurance Tbk
63	NASA	Ayana Land Internasional Tbk, PT
64	NIRO	Nirvana Development
65	NOBU	Bank Nationalnobu Tbk, PT
66	NRCA	Nusa Raya Cipta Tbk, PT
67	OASA	Protech Mitra Perkasa Tbk
68	PADI	Minna Padi Investama
69	PBSA	Paramita Bangun Sarana Tbk
70	POWR	Cikarang Listrindo Tbk
71	PRDA	Prodia Widyahusada Tbk
72	SHIP	Sillo Maritime Perdana Tbk
73	SIDO	Industri Jamu dan Farmasi Sidomuncul Tbk, PT
74	SILO	Siloam International Hospitals Tbk, PT
75	SMBR	Semen Baturaja Tbk, PT
76	SSMS	Sawit Sumbermas Sarana Tbk, PT
77	TARA	Sitara Propertindo Tbk, PT
78	TGRA	Terregra Asia Energi Tbk, PT
79	TOPS	Totalindo Eka Persada Tbk, PT

80	VICO	Victoria Investama Tbk, PT
81	WIIM	Wsimillak Inti Makmur
82	WSBP	Waskita Beton Precast Tbk
83	WSKT	Waskita Raya (Persero)
84	WTON	Wijaya Karya Beton Tbk, PT
85	ZINC	Kapuas Prima Coal Tbk

**Lampiran 2 : Tabulasi Data Perhitungan Variabel-Variabel (ASLI)**

NO	PERUSAHAAN	LEV	ROA	AUD	AGE	UDW	UNDR
1	ACST	0,7109	0,0698	0	1,2553	1	0,0777
2	AGII	0,6207	0,1207	0	4,7095	1	0,1600
3	AGRS	0,8518	0,0050	0	1,6128	1	0,7000
4	ALTO	0,4732	0,0015	0	2,7081	1	0,2115
5	APII	0,6164	0,1099	0	1,1139	0,0000	0,5000
6	ARTO	0,8562	0,0032	0	3,1781	0,0000	0,3106
7	ASSA	0,8646	0,0069	1	2,5649	0	0,2564
8	ATIC	0,7928	0,0413	0	1,1461	0,0000	0,0357
9	BBHI	0,8558	0,0168	0	1,3617	0,0000	0,0320
10	BBMD	0,7477	0,0454	0	1,2553	0,0000	0,1304
11	BBYB	0,8988	0,0047	0	1,4150	0,0000	0,5897
12	BELL	0,5060	0,0098	0	3,8286	1	0,4000
13	BIKA	0,7826	0,0983	0	0,9031	1	0,5000
14	BIRD	0,7595	0,1423	0	1,1139	1	0,1462
15	BMAS	0,8913	0,0070	1	1,3802	0,0000	0,0156
16	BOGA	0,8899	0,0030	0	1,6094	0,0000	0,6990
17	BOLT	0,4243	0,3320	0	1,5185	1	0,5000
18	BPII	0,1963	0,1172	0	1,2041	0,0000	0,1000
19	BSSR	0,7122	0,0423	1	3,0910	1	0,0211
20	CAMP	0,4638	0,0483	0	3,8067	0,0000	1,8939
21	CINT	0,2959	0,4724	0	1,5563	1	0,1000
22	CLEO	0,5723	0,0842	0	2,9444	0,0000	1,2783
23	CSIS	0,5197	0,0243	0	3,0910	1	0,8667
24	DAYA	0,6445	0,2758	0	2,3979	1	0,0426
25	DMAS	0,1588	0,1269	0	1,3424	1	0,0429
26	DNAR	0,6799	0,0089	0	1,3802	0,0000	0,7000
27	DPUM	0,8170	0,1159	0	0,4771	0,0000	0,5000
28	DWGL	0,7801	0,0816	0	3,4340	1	2,2800
29	DYAN	0,6098	0,0458	0	0,7782	1	0,1000
30	ESSA	0,7179	0,1757	1	1,7918	0	0,2466
31	FINN	0,8418	0,0089	0	3,5835	0,0000	0,6952
32	FIRE	0,7617	0,0165	0	0,6931	1	0,5000
33	FORZ	0,7548	0,0183	0	1,6094	1	0,5000
34	GAMA	0,4044	0,0038	0	2,1972	0	0,1867
35	HOKI	0,4056	0,1172	0	2,6391	1	0,1161
36	HOTL	0,6752	0,0203	0	0,8451	1	0,0811
37	IBFN	0,8328	0,0133	1	1,3617	0,0000	0,0069
38	IBST	0,5816	0,0516	0	1,7918	1	0,2000
39	IDPR	0,4913	0,1957	0	1,5798	0,0000	0,1523

40	IMJS	0,7864	0,0000	0	0,9542	0,0000	0,0800
41	IMPC	0,5403	0,1130	0	1,5185	1	0,5000
42	IPCM	0,4372	0,1956	1	1,3863	1	0,0579
43	JGLE	0,5525	0,0569	0	3,3322	0,0000	0,2357
44	JMAS	0,1136	0,0008	0	1,0986	0,0000	0,7000
45	KINO	0,6445	0,1098	0	2,7726	1	0,0132
46	KMTR	0,7236	0,0538	0	3,2581	1	0,4956
47	KOBX	0,8039	0,0826	0	2,3026	0	0,0455
48	KRAH	0,4049	0,0641	0	1,3617	0,0000	0,4909
49	LINK	0,2189	0,1729	0	1,2553	1	0,5000
50	MAPB	0,8803	0,0971	1	1,3863	1	0,1280
51	MARI	0,4352	0,2057	0	2,3026	1	0,0267
52	MARK	0,5284	0,1238	0	2,7081	0,0000	0,4960
53	MDIA	0,3051	0,1208	0	0,7782	1	0,0942
54	MGNA	0,8112	0,0113	0	1,4771	0,0000	0,4762
55	MIKA	0,1625	0,2511	0	2,9957	0,0000	0,2471
56	MINA	0,0298	0,0228	0	3,1781	0,0000	0,6952
57	MLPT	0,8065	0,0284	0	1,0792	0,0000	0,5000
58	MMLP	0,3230	0,1337	0	1,6094	0,0000	0,4926
59	MPOW	0,7674	0,0211	0	2,3026	0,0000	0,4800
60	MSKY	0,7221	0,0190	1	3,1781	0	0,0065
61	MTRA	0,5225	0,0380	0	3,5835	0,0000	0,1568
62	MTWI	0,5921	0,0198	0	4,1744	0,0000	3,4200
63	NASA	0,1031	0,0002	0	1,0986	0,0000	0,6990
64	NIRO	0,4279	0,0001	0	2,1972	0	0,1867
65	NOBU	0,7897	0,0030	1	1,3617	0,0000	0,1467
66	NRCA	0,6792	0,1099	0	1,5798	0,0000	0,4941
67	OASA	0,0798	0,1909	0	2,3026	0,0000	0,6947
68	PADI	0,0536	0,0598	0	2,6391	1	0,0784
69	PBSA	0,5007	0,2321	0	2,6391	1	0,0500
70	POWR	0,6648	0,0788	1	3,2581	0,0000	0,0267
71	PRDA	0,7814	0,1151	0	3,3322	0,0000	0,0154
72	SHIP	0,2692	0,1050	0	3,2958	0,0000	0,7000
73	SIDO	0,3935	0,1802	0	1,5798	1	0,2069
74	SILO	0,8458	0,0328	0	1,2304	0,0000	0,0487
75	SMBR	0,2039	0,2491	1	1,5911	1	0,0179
76	SSMS	0,7795	0,1632	1	1,2553	1	0,0746
77	TARA	0,3530	0,0043	0	0,9031	0,0000	0,6981
78	TGRA	0,0773	0,0008	0	3,0910	0,0000	1,7250
79	TOPS	0,7720	0,0723	0	3,0445	1	0,4968
80	VICO	0,1078	0,1427	0	1,3802	0,0000	0,6800

81	WIIM	0,6163	0,1748	0	2,8904	1	0,2154
82	WSBP	0,6928	0,0990	0	0,6931	0,0000	0,1020
83	WSKT	0,8788	0,0337	0	3,9318	1	0,1974
84	WTON	0,7498	0,0827	0	1,2304	1	0,2881
85	ZINC	0,7361	0,0627	0	2,4849	0,0000	1,1143

**Lampiran 3 : Tabulasi Data Perhitungan Variabel-Variabel (THILNEGER)**

NO	PERUSAHAAN	LEV	ROA	AUD	AGE	UDW	UNDR
1	ACST	0,139110223	0,043585	0	0,184853054	0,16499	0,045988132
2	AGII	0,129986086	0,057312	0	0,358052257	0,16499	0,065996
3	AGRS	0,15227023	0,011705	0	0,209529756	0,16499	0,138040538
4	ALTO	0,113500333	0,006434	0	0,271510093	0,16499	0,075884363
5	APII	0,129538563	0,054691	0	0,174136245	0	0,116665548
6	ARTO	0,15266826	0,009329	0	0,294129271	0	0,091952298
7	ASSA	0,153411478	0,013743	0,16499	0,264239063	0	0,083545934
8	ATIC	0,146904626	0,033523	0	0,176633954	0	0,031180179
9	BBHI	0,152632946	0,02138	0	0,192531937	0	0,029514308
10	BBMD	0,142666557	0,035159	0	0,184853054	0	0,059587386
11	BBYB	0,156419724	0,011313	0	0,196259981	0	0,126693862
12	BELL	0,117366329	0,016302	0	0,322834521	0,16499	0,104348838
13	BIKA	0,145961733	0,051717	0	0,156791724	0,16499	0,116665548
14	BIRD	0,143789653	0,062239	0	0,174136245	0,16499	0,063075797
15	BMAS	0,155765898	0,013755	0,16499	0,193834198	0	0,02062375
16	BOGA	0,15564202	0,009001	0	0,209312293	0	0,137944776
17	BOLT	0,10746586	0,095062	0	0,203313873	0,16499	0,116665548
18	BPII	0,073091546	0,056473	0	0,181047488	0	0,052174419
19	BSSR	0,139238087	0,033933	0,16499	0,290074871	0,16499	0,023939265
20	CAMP	0,112363823	0,036261	0	0,321906546	0	0,227060015
21	CINT	0,08975024	0,113401	0	0,205828083	0,16499	0,052174419
22	CLEO	0,124812731	0,04788	0	0,283112407	0	0,186538023
23	CSIS	0,118941933	0,025739	0	0,290074871	0,16499	0,153597331
24	DAYA	0,13245508	0,086654	0	0,255489307	0,16499	0,034035784
25	DMAS	0,065751364	0,058767	0	0,191162307	0,16499	0,034156175
26	DNAR	0,136048118	0,015535	0	0,193834198	0	0,138040538
27	DPUM	0,149127358	0,056173	0	0,113965134	0	0,116665548
28	DWGL	0,145722698	0,04714	0	0,305743307	0,16499	0,249129437
29	DYAN	0,128844081	0,035306	0	0,145542434	0,16499	0,052174419
30	ESSA	0,139795562	0,069152	0,16499	0,220850037	0	0,081928017
31	FINN	0,151381339	0,015567	0	0,312329118	0	0,137570211
32	FIRE	0,143998078	0,021217	0	0,137363185	0,16499	0,116665548
33	FORZ	0,143339112	0,022312	0	0,209312293	0,16499	0,116665548
34	GAMA	0,104919697	0,010229	0	0,244565305	0	0,071283827
35	HOKI	0,105076597	0,056488	0	0,268029154	0,16499	0,056224814
36	HOTL	0,135569262	0,023508	0	0,15167401	0,16499	0,046980473
37	IBFN	0,150568471	0,019006	0,16499	0,192531937	0	0,013749167
38	IBST	0,125822428	0,037464	0	0,220850037	0,16499	0,073785771
39	IDPR	0,115647953	0,07298	0	0,207375011	0	0,064397639



40	IMJS	0,146312633	0,000563	0	0,161171038	0	0,046666219
41	IMPC	0,121279426	0,05545	0	0,203313873	0,16499	0,116665548
42	IPCM	0,10909911	0,072977	0,16499	0,19426088	0,16499	0,03969878
43	JGLE	0,122638775	0,039359	0	0,30117814	0	0,080103331
44	JMAS	0,055620131	0,004727	0	0,172933786	0	0,138040538
45	KINO	0,132457818	0,054665	0	0,274726371	0,16499	0,018925651
46	KMTR	0,140345452	0,038254	0	0,29781022	0,16499	0,116154974
47	KOBX	0,147933798	0,047425	0	0,250360302	0	0,035175986
48	KRAH	0,104989907	0,041772	0	0,192531937	0	0,115600087
49	LINK	0,077189084	0,06861	0	0,184853054	0,16499	0,116665548
50	MAPB	0,154803371	0,051405	0,16499	0,19426088	0,16499	0,059023127
51	MARI	0,108838001	0,074828	0	0,250360302	0,16499	0,026942754
52	MARK	0,119929543	0,058044	0	0,271510093	0	0,116197949
53	MDIA	0,091127391	0,057341	0	0,145542434	0,16499	0,05063954
54	MGNA	0,148596889	0,017505	0	0,200523694	0	0,113853917
55	MIKA	0,066512902	0,082669	0	0,285567725	0	0,0820083
56	MINA	0,028469982	0,024908	0	0,294129271	0	0,137570211
57	MLPT	0,148170786	0,027799	0	0,171397632	0	0,116665548
58	MMLP	0,093775903	0,06033	0	0,209312293	0	0,115796794
59	MPOW	0,144533183	0,023956	0	0,250360302	0	0,114308425
60	MSKY	0,140199141	0,022713	0,16499	0,294129271	0	0,013338651
61	MTRA	0,11926122	0,032157	0	0,312329118	0	0,065323697
62	MTWI	0,126959353	0,023198	0	0,337096304	0	0,30512
63	NASA	0,052968533	0,002254	0	0,172933786	0	0,137944776
64	NIRO	0,107926495	0,001184	0	0,244565305	0	0,071283827
65	NOBU	0,146615321	0,009103	0,16499	0,192531937	0	0,063186359
66	NRCA	0,135973687	0,054696	0	0,207375011	0	0,11597725
67	OASA	0,046610614	0,072088	0	0,250360302	0	0,137520609
68	PADI	0,038192772	0,040347	0	0,268029154	0,16499	0,046206442
69	PBSA	0,116745457	0,079489	0	0,268029154	0,16499	0,036892886
70	POWR	0,134523614	0,046325	0,16499	0,29781022	0	0,026942754
71	PRDA	0,145844991	0,055971	0	0,30117814	0	0,020464491
72	SHIP	0,085598284	0,053474	0	0,299530103	0	0,138040538
73	SIDO	0,103495446	0,070032	0	0,207375011	0,16499	0,075047158
74	SILO	0,151734459	0,029861	0	0,183016151	0	0,0364259
75	SMBR	0,074510279	0,082339	0,16499	0,208114112	0,16499	0,022047716
76	SSMS	0,145668959	0,066643	0,16499	0,184853054	0,16499	0,045071833
77	TARA	0,098022559	0,010765	0	0,156791724	0	0,137854374
78	TGRA	0,045873249	0,004769	0	0,290074871	0	0,216696637
79	TOPS	0,144966547	0,044351	0	0,28788379	0,16499	0,116288598
80	VICO	0,054164173	0,062325	0	0,193834198	0	0,136054239

81	WIIM	0,129524565	0,068981	0	0,28050104	0,16499	0,076571113
82	WSBP	0,137330836	0,05192	0	0,137363185	0	0,052704122
83	WSKT	0,154665972	0,030292	0	0,327155893	0,16499	0,073298731
84	WTON	0,142863732	0,047441	0	0,183016151	0,16499	0,088563766
85	ZINC	0,141552775	0,041313	0	0,260083417	0	0,174163003

**Lampiran 4 : Data Perhitungan Reputasi Underwriter**

<b>NO</b>	<b>PERUSAHAAN</b>	<b>UNDERWRITER</b>	<b>SKOR (ASLI)</b>	<b>SKOR (THILNEIGER)</b>
1	ACST	PT Kim Eng Securities	1	0,16499
2	AGII	PT DBS Vickers Securities Indonesia, PT Mandiri Sekuritas & PT RHB Securities Indonesia	1	0,16499
3	AGRS	PT Indo Premier Securities	1	0,16499
4	ALTO	PT Valbury Asia Securities	1	0,16499
5	APII	PT Lautandhana Securindo	0,0000	0
6	ARTO	PT Binaartha Parama & PT Erdikha Elit Sekuritas	0,0000	0
7	ASSA	PT Bahana Securities, PT Buana Capital	0	0
8	ATIC	PT Bahana Securities	0,0000	0
9	BBHI	PT Lautandhana Securindo	0,0000	0
10	BBMD	PT Ciptadana Securities	0,0000	0
11	BBYB	PT Semesta Indovent	0,0000	0
12	BELL	PT Lotus Andalan Sekuritas	1	0,16499
13	BIKA	PT RHB OSK Securities Indonesia	1	0,16499
14	BIRD	PT Credit Suisse Securities Indonesia, PT Danareksa Sekuritas, PT UBS Securities Indonesia	1	0,16499
15	BMAS	PT Makinta Securities	0,0000	0
16	BOGA	PT Jasa Utama Capital	0,0000	0
17	BOLT	PT RHB OSK Securities Indonesia	1	0,16499
18	BPII	PT Panin Sekuritas Tbk	0,0000	0
19	BSSR	PT CIMB Securities Indonesia	1	0,16499
20	CAMP	PT Shinhan Sekuritas Indonesia	0,0000	0

21	CINT	PT Danareksa Sekuritas, PT Sinarmas Sekuritas	1	0,16499
22	CLEO	PT Lautandhana Securindo	0,0000	0
23	CSIS	PT Ciptadana Sekuritas Asia :	1	0,16499
24	DAYA	PT Trimegah Securities Tbk.	1	0,16499
25	DMAS	PT Macquarie Capital Securities Indonesia, PT CLSA Indonesia, PT Sinarmas Sekuritas	1	0,16499
26	DNAR	PT Andalan Artha Advisindo Sekuritas	0,0000	0
27	DPUM	PT DBS Vickers Securities Indonesia, PT Sucorinvest Central Gani, PT BNI Securities	0,0000	0
28	DWGL	PT Sinarmas Sekuritas	1	0,16499
29	DYAN	PT Mandiri Sekuritas, PT OSK Nusadana Securities Indonesia	1	0,16499
30	ESSA	PT Equator Securities	0	0
31	FINN	PT UOB Kay Hian Sekuritas	0,0000	0
32	FIRE	PT Ciptadana Sekuritas Asia & PT Lautandhana Securindo	1	0,16499
33	FORZ	PT Sinarmas Sekuritas	1	0,16499
34	GAMA	PT Andalan Artha Advisindo Sekuritas	0	0
35	HOKI	PT Bahana Sekuritas, PT RHB Sekuritas Indonesia & PT Trimegah Sekuritas Indonesia Tbk.	1	0,16499
36	HOTL	PT Valbury Asia Securities	1	0,16499
37	IBFN	PT BNI Securities	0,0000	0
38	IBST	PT OSK Nusadana Securities, PT Sinarmas Sekuritas	1	0,16499
39	IDPR	PT Yuanta Securities Indonesia, PT Minna Padi Investama Tbk	0,0000	0
40	IMJS	PT Kresna Graha Sekurindo, PT Buana Capital	0,0000	0
41	IMPC	PT Ciptadana Securities	1	0,16499
42	IPCM	PT Danareksa Sekuritas & PT Mandiri Sekuritas	1	0,16499
43	JGLE	PT Danatama Makmur	0,0000	0
44	JMAS	PT Jasa Utama Capital Sekuritas	0,0000	0
45	KINO	PT Deutsche Securities Indonesia, PT Credit Suisse Securities Indonesia, PT Indo Premier Securities	1	0,16499

46	KMTR	PT Trimegah Sekuritas Indonesia Tbk.	1	0,16499
47	KOBX	PT Datindo Entrycom	0	0
48	KRAH	PT Andalan Artha Advisindo Sekuritas, PT Andalan Artha Advisindo Sekuritas	0,0000	0
49	LINK	PT Ciptadana Securities	1	0,16499
50	MAPB	PT Indo Premier Sekuritas	1	0,16499
51	MARI	PT Trimegah Securities Tbk.	1	0,16499
52	MARK	PT Panin Sekuritas Tbk	0,0000	0
53	MDIA	PT Ciptadana Securities, PT Sinarmas Sekuritas, PT Kresna Graha Sekurindo Tbk	1	0,16499
54	MGNA	PT Jasa Utama Capital	0,0000	0
55	MIKA	PT Kresna Graha Sekurindo Tbk	0,0000	0
56	MINA	PT Jasa Utama Capital Sekuritas	0,0000	0
57	MLPT	PT Ciptadana Securities (affiliated)	0,0000	0
58	MMLP	PT Indo Premier Securities	0,0000	0
59	MPOW	PT KGI Sekuritas Indonesia :	0,0000	0
60	MSKY	PT Danareksa Sekuritas, PT MNC Securities	0	0
61	MTRA	PT Lautandhana Securindo	0,0000	0
62	MTWI	PT Panin Sekuritas Tbk. :	0,0000	0
63	NASA	PT Jasa Utama Capital Sekuritas	0,0000	0
64	NIRO	PT Andalan Artha Advisindo Sekuritas	0	0
65	NOBU	PT Ciptadana Securities	0,0000	0
66	NRCA	PT Ciptadana Securities	0,0000	0
67	OASA	PT Erdhika Elit Sekuritas	0,0000	0
68	PADI	PT Ciptadana Securities, PT Dinamika Usaha Jaya, PT Panca Global Securities	1	0,16499
69	PBSA	PT Sinarmas Sekuritas	1	0,16499
70	POWR	PT Indo Premier Securities	0,0000	0

71	PRDA	PT Citigroup Securities Indonesia	0,0000	0
72	SHIP	PT Lautandhana Securindo & PT UOB Kay Hian Securities	0,0000	0
73	SIDO	PT Kresna Graha Sekurindo Tbk., PT Mandiri Sekuritas	1	0,16499
74	SILO	PT Ciptadana Securities	0,0000	0
75	SMBR	PT Bahana Securities, PT Danareksa Sekuritas, PT Mandiri Sekuritas	1	0,16499
76	SSMS	PT BNP Paribas Securities Indonesia, PT Mandiri Sekuritas, PT RHB OSK Securities Indonesia	1	0,16499
77	TARA	PT Sinarmas Sekuritas	0,0000	0
78	TGRA	PT Lautandhana Securindo & PT Mega Capital Sekuritas	0,0000	0
79	TOPS	PT Bahana Sekuritas, PT CLSA Sekuritas Indonesia & PT Indo Premier Sekuritas (affiliated)	1	0,16499
80	VICO	PT Andalan Artha Advisindo Sekuritas	0,0000	0
81	WIIM	PT Mandiri Sekuritas, PT OSK Nusadana Securities Indonesia	1	0,16499
82	WSBP	PT Bahana Securities	0,0000	0
83	WSKT	PT Bahana Securities, PT Danareksa Sekuritas, PT Mandiri Sekuritas	1	0,16499
84	WTON	PT Bahana Securities, PT Danareksa Sekuritas, PT Mandiri Sekuritas, PT Sucorinvest Central Gani	1	0,16499
85	ZINC	PT Erdikha Elit Sekuritas :	0,0000	0

**Lampiran 5 : Data Perhitungan Reputasi Auditor**

NO	PERUSAHAAN	NAMA PERUSAHAAN	SKOR (ASLI)	SKOR (THILNEIGER)
1	ACST	Acset Indonusa Tbk, PT	0	0
2	AGII	Aneka Gas Industri Tbk	0	0
3	AGRS	Bank Agris Tbk, PT	0	0
4	ALTO	Tri Banyan Tirta	0	0
5	APII	Arita Prima Indonesia Tbk, PT	0	0
6	ARTO	Bank Artos Indonesia Tbk	0	0
7	ASSA	Adi Sarana Armada	1	0,16499
8	ATIC	Anabatic Technologies Tbk, PT	0	0
9	BBHI	Bank Harda Internasional Tbk, PT	0	0
10	BBMD	Bank Mestika Dharma Tbk, PT	0	0
11	BBYB	Bank Yudha Bakti Tbk, PT	0	0
12	BELL	Trisula Textile Industries Tbk	0	0
13	BIKA	Binakarya Jaya Abadi Tbk, PT	0	0
14	BIRD	Blue Bird Tbk, PT	0	0
15	BMAS	Bank Maspion Indonesia Tbk, PT	1	0,16499
16	BOGA	Bintang Oto Global Tbk	0	0
17	BOLT	Garuda Metalindo Tbk, PT	0	0
18	BPII	Batavia Prosperindo Internasional Tbk, PT	0	0
19	BSSR	Baramulti Suksessarana	1	0,16499
20	CAMP	Campina Ice Cream Industry Tbk	0	0
21	CINT	Chitose Internasional Tbk, PT	0	0
22	CLEO	Sariguna Primatira Tbk, PT	0	0
23	CSIS	Cahayasakti Investindo Sukses Tbk, PT	0	0
24	DAYA	Duta Intidaya Tbk	0	0
25	DMAS	Puradelta Lestari Tbk, PT	0	0
26	DNAR	Bank Dinar Indonesia Tbk, PT	0	0
27	DPUM	Dua Putra Utama Makmur Tbk	0	0
28	DWGL	Dwi Guna Laksana Tbk	0	0
29	DYAN	Dyandra Media Internasional Tbk, PT	0	0
30	ESSA	Surya Essa Perkasa	1	0,16499
31	FINN	First Indo American Leasing Tbk, PT	0	0
32	FIRE	Alfa Energi Investama Tbk, PT	0	0
33	FORZ	Forza Land Indonesia Tbk, PT	0	0
34	GAMA	Gading Development	0	0
35	HOKI	Buyung Poetra Sembada Tbk, PT	0	0
36	HOTL	Saraswati Griya Lestari Tbk, PT	0	0

37	IBFN	Intan Baruprana Finance Tbk, PT	1	0,16499
38	IBST	Inti Bangun Sejahtera	0	0
39	IDPR	Indonesia Pondasi Raya Tbk	0	0
40	IMJS	Indomobil Multijasa Tbk, PT	0	0
41	IMPC	Impack Pratama Industri Tbk, PT	0	0
42	IPCM	Jasa Armada Indonesia Tbk	1	0,16499
43	JGLE	Graha Ardasentra Propertindo Tbk	0	0
44	JMAS	Asuransi Jiwa Syariah Jasa Mitra Abadi Tbk	0	0
45	KINO	Kino Indonesia Tbk	0	0
46	KMTR	Kirana Megatara Tbk, PT	0	0
47	KOBX	Kobexindo Tractors	0	0
48	KRAH	Grand Kartech Tbk, PT	0	0
49	LINK	Link Net Tbk, PT	0	0
50	MAPB	MAP Boga Adiperkasa Tbk, PT	1	0,16499
51	MARI	Mahaka Radio Intrega Tbk	0	0
52	MARK	Mark Dynamics Indonesia Tbk, PT	0	0
53	MDIA	Intermedia Capital Indonesia Tbk, PT	0	0
54	MGNA	Magna Finance Tbk, PT	0	0
55	MIKA	Mitra Keluarga Karyasehat Tbk, PT	0	0
56	MINA	Sanurhasta Mitra Tbk, PT	0	0
57	MLPT	Multipolar Technology Tbk, PT	0	0
58	MMLP	Mega Manunggal Properti Tbk, PT	0	0
59	MPOW	Megapower Makmur Tbk, PT	0	0
60	MSKY	MNC Sky Vision	1	0,16499
61	MTRA	Mitra Pemuda Tbk	0	0
62	MTWI	Malacca Trust Wuwungan Insurance Tbk	0	0
63	NASA	Ayana Land Internasional Tbk, PT	0	0
64	NIRO	Nirvana Development	0	0
65	NOBU	Bank Nationalnobu Tbk, PT	1	0,16499
66	NRCA	Nusa Raya Cipta Tbk, PT	0	0
67	OASA	Protech Mitra Perkasa Tbk	0	0
68	PADI	Minna Padi Investama	0	0
69	PBSA	Paramita Bangun Sarana Tbk	0	0
70	POWR	Cikarang Listrindo Tbk	1	0,16499
71	PRDA	Prodia Widyahusada Tbk	0	0
72	SHIP	Sillo Maritime Perdana Tbk	0	0
73	SIDO	Industri Jamu dan Farmasi Sidomuncul Tbk, PT	0	0
74	SILO	Siloam International Hospitals Tbk, PT	0	0
75	SMBR	Semen Baturaja Tbk, PT	1	0,16499
76	SSMS	Sawit Sumbermas Sarana Tbk, PT	1	0,16499
77	TARA	Sitara Propertindo Tbk, PT	0	0



78	TGRA	Terregra Asia Energi Tbk, PT	0	0
79	TOPS	Totalindo Eka Persada Tbk, PT	0	0
80	VICO	Victoria Investama Tbk, PT	0	0
81	WIIM	Wsimillak Inti Makmur	0	0
82	WSBP	Waskita Beton Precast Tbk	0	0
83	WSKT	Waskita Raya (Persero)	0	0
84	WTON	Wijaya Karya Beton Tbk, PT	0	0
85	ZINC	Kapuas Prima Coal Tbk	0	0

**Lampiran 6 : Data Perhitungan Umur Perusahaan**

$$AGE = LOG (Tahun IPO - Tahun perusahaan berdiri)$$

NO	PERUSAHAAN	TAHUN BERDIRI	TAHUN LISTING	AGE (ASLI)	AGE (THILNEGER)
1	ACST	1995	2013	1,2553	0,184853
2	AGII	1905	2016	4,7095	0,358052
3	AGRS	1973	2014	1,6128	0,209530
4	ALTO	1997	2012	2,7081	0,271510
5	APII	2000	2013	1,1139	0,174136
6	ARTO	1992	2016	3,1781	0,294129
7	ASSA	1999	2012	2,5649	0,264239
8	ATIC	2001	2015	1,1461	0,176634
9	BBHI	1992	2015	1,3617	0,192532
10	BBMD	1995	2013	1,2553	0,184853
11	BBYB	1989	2015	1,4150	0,196260
12	BELL	1971	2017	3,8286	0,322835
13	BIKA	2007	2015	0,9031	0,156792
14	BIRD	2001	2014	1,1139	0,174136
15	BMAS	1989	2013	1,3802	0,193834
16	BOGA	2011	2016	1,6094	0,209312
17	BOLT	1982	2015	1,5185	0,203314
18	BPII	1998	2014	1,2041	0,181047
19	BSSR	1990	2012	3,0910	0,290075
20	CAMP	1972	2017	3,8067	0,321907
21	CINT	1978	2014	1,5563	0,205828
22	CLEO	1998	2017	2,9444	0,283112
23	CSIS	1995	2017	3,0910	0,290075
24	DAYA	2005	2016	2,3979	0,255489
25	DMAS	1993	2015	1,3424	0,191162
26	DNAR	1990	2014	1,3802	0,193834
27	DPUM	2012	2015	0,4771	0,113965
28	DWGL	1986	2017	3,4340	0,305743
29	DYAN	2007	2013	0,7782	0,145542
30	ESSA	2006	2012	1,7918	0,220850
31	FINN	1981	2017	3,5835	0,312329
32	FIRE	2015	2017	0,6931	0,137363
33	FORZ	2012	2017	1,6094	0,209312
34	GAMA	2003	2012	2,1972	0,244565
35	HOKI	2003	2017	2,6391	0,268029

36	HOTL	2006	2013	0,8451	0,151674
37	IBFN	1991	2014	1,3617	0,192532
38	IBST	2006	2012	1,7918	0,220850
39	IDPR	1977	2015	1,5798	0,207375
40	IMJS	2004	2013	0,9542	0,161171
41	IMPC	1981	2014	1,5185	0,203314
42	IPCM	2013	2017	1,3863	0,194261
43	JGLE	1988	2016	3,3322	0,301178
44	JMAS	2014	2017	1,0986	0,172934
45	KINO	1999	2015	2,7726	0,274726
46	KMTR	1991	2017	3,2581	0,297810
47	KOBX	2002	2012	2,3026	0,250360
48	KRAH	1990	2013	1,3617	0,192532
49	LINK	1996	2014	1,2553	0,184853
50	MAPB	2013	2017	1,3863	0,194261
51	MARI	2006	2016	2,3026	0,250360
52	MARK	2002	2017	2,7081	0,271510
53	MDIA	2008	2014	0,7782	0,145542
54	MGNA	1984	2014	1,4771	0,200524
55	MIKA	1995	2015	2,9957	0,285568
56	MINA	1993	2017	3,1781	0,294129
57	MLPT	2001	2013	1,0792	0,171398
58	MMLP	2010	2015	1,6094	0,209312
59	MPOW	2007	2017	2,3026	0,250360
60	MSKY	1988	2012	3,1781	0,294129
61	MTRA	1980	2016	3,5835	0,312329
62	MTWI	1952	2017	4,1744	0,337096
63	NASA	2014	2017	1,0986	0,172934
64	NIRO	2003	2012	2,1972	0,244565
65	NOBU	1990	2013	1,3617	0,192532
66	NRCA	1975	2013	1,5798	0,207375
67	OASA	2006	2016	2,3026	0,250360
68	PADI	1998	2012	2,6391	0,268029
69	PBSA	2002	2016	2,6391	0,268029
70	POWR	1990	2016	3,2581	0,297810
71	PRDA	1988	2016	3,3322	0,301178
72	SHIP	1989	2016	3,2958	0,299530
73	SIDO	1975	2013	1,5798	0,207375
74	SILO	1996	2013	1,2304	0,183016
75	SMBR	1974	2013	1,5911	0,208114
76	SSMS	1995	2013	1,2553	0,184853

77	TARA	2006	2014	0,9031	0,156792
78	TGRA	1995	2017	3,0910	0,290075
79	TOPS	1996	2017	3,0445	0,287884
80	VICO	1989	2013	1,3802	0,193834
81	WIIM	1994	2012	2,8904	0,280501
82	WSBP	2014	2016	0,6931	0,137363
83	WSKT	1961	2012	3,9318	0,327156
84	WTON	1997	2014	1,2304	0,183016
85	ZINC	2005	2017	2,4849	0,260083

**Lampiran 7 : Data Perhitungan Financial Leverage**

$$DAR = \frac{\text{Total Hutang}}{\text{Total Asset}} \times 100\%$$

NO	PERUSAHAAN	TOTAL ASSET	TOTAL LIABILITAS	LEV (ASLI)	LEV (THILNEGER)
1	ACST	7,54771E+11	5,3656E+11	0,7109	0,139110
2	AGII	4,95345E+12	3,07458E+12	0,6207	0,129986
3	AGRS	2,50928E+12	2,13729E+12	0,8518	0,152270
4	ALTO	213.200.517.834	100.894.451.103	0,4732	0,113500
5	APII	1,7858E+11	1,10082E+11	0,6164	0,129539
6	ARTO	7,45647E+11	6,38433E+11	0,8562	0,152668
7	ASSA	1,42178E+12	1.229.230.035.776	0,8646	0,153411
8	ATIC	1,9737E+12	1,56472E+12	0,7928	0,146905
9	BBHI	2,02053E+12	1,7292E+12	0,8558	0,152633
10	BBMD	7,3688E+12	5,50968E+12	0,7477	0,142667
11	BBYB	2,69195E+12	2,41955E+12	0,8988	0,156420
12	BELL	3,87981E+11	1,96328E+11	0,5060	0,117366
13	BIKA	1,7334E+12	1,35663E+12	0,7826	0,145962
14	BIRD	5,01191E+12	3,80666E+12	0,7595	0,143790
15	BMAS	3,40328E+12	3,03339E+12	0,8913	0,155766
16	BOGA	2,51192E+13	2,23535E+13	0,8899	0,155642
17	BOLT	9,11611E+11	3,86754E+11	0,4243	0,107466
18	BPII	2,7902E+11	54758788350	0,1963	0,073092
19	BSSR	997.627.172.120	710.508.239.720	0,7122	0,139238
20	CAMP	1,03104E+12	4,78205E+11	0,4638	0,112364
21	CINT	2,62915E+11	77798659892	0,2959	0,089750
22	CLEO	4,63289E+11	2,65127E+11	0,5723	0,124813
23	CSIS	2,52131E+11	1,31033E+11	0,5197	0,118942
24	DAYA	1,26998E+11	81850163000	0,6445	0,132455
25	DMAS	7,60283E+12	1,20745E+12	0,1588	0,065751
26	DNAR	8,54801E+11	5,81212E+11	0,6799	0,136048
27	DPUM	3,10943E+11	2,54027E+11	0,8170	0,149127
28	DWGL	1,78726E+12	1,39421E+12	0,7801	0,145723
29	DYAN	1,41845E+12	8,65025E+11	0,6098	0,128844
30	ESSA	714.615.910.670	5,13032E+11	0,7179	0,139796
31	FINN	8,66961E+11	7,29843E+11	0,8418	0,151381
32	FIRE	3,33255E+11	2,53849E+11	0,7617	0,143998
33	FORZ	4,276E+11	3,22739E+11	0,7548	0,143339
34	GAMA	1.041.748.952.642	421.271.310.337	0,4044	0,104920
35	HOKI	3,70245E+11	1,50171E+11	0,4056	0,105077

36	HOTL	8,43617E+11	5,69577E+11	0,6752	0,135569
37	IBFN	2,35528E+12	1,96153E+12	0,8328	0,150568
38	IBST	1.589.194.634.733	924.225.545.809	0,5816	0,125822
39	IDPR	9,22263E+11	4,53122E+11	0,4913	0,115648
40	IMJS	5,67691E+12	4,46437E+12	0,7864	0,146313
41	IMPC	1,64481E+12	8,88742E+11	0,5403	0,121279
42	IPCM	5,9837E+11	2,61636E+11	0,4372	0,109099
43	JGLE	4,31771E+12	2,38558E+12	0,5525	0,122639
44	JMAS	70822435698	8048586711	0,1136	0,055620
45	KINO	1,86338E+12	1,201E+12	0,6445	0,132458
46	KMTR	3,80682E+12	2,75451E+12	0,7236	0,140345
47	KOBX	1.211.942.018.650	974.319.542.110	0,8039	0,147934
48	KRAH	2,28799E+11	92647366745	0,4049	0,104990
49	LINK	3,2262E+12	7,06136E+11	0,2189	0,077189
50	MAPB	1,23383E+12	1,08618E+12	0,8803	0,154803
51	MARI	1,56265E+11	67999817146	0,4352	0,108838
52	MARK	1,70938E+11	90318106019	0,5284	0,119930
53	MDIA	984900277	300451852	0,3051	0,091127
54	MGNA	3,38764E+11	2,7479E+11	0,8112	0,148597
55	MIKA	2,15667E+12	3,50493E+11	0,1625	0,066513
56	MINA	1,17113E+11	3487103929	0,0298	0,028470
57	MLPT	1,00425E+12	8,09935E+11	0,8065	0,148171
58	MMLP	2,139E+12	6,91E+11	0,3230	0,093776
59	MPOW	3,50204E+11	2,68745E+11	0,7674	0,144533
60	MSKY	3.447.663.000.000	2.489.432.000.000	0,7221	0,140199
61	MTRA	2,59288E+11	1,35477E+11	0,5225	0,119261
62	MTWI	2,76988E+11	1,64012E+11	0,5921	0,126959
63	NASA	8,90712E+11	91803206151	0,1031	0,052969
64	NIRO	2.102.358.283.886	899.596.234.493	0,4279	0,107926
65	NOBU	1,21752E+12	9,61435E+11	0,7897	0,146615
66	NRCA	8,35886E+11	5,67729E+11	0,6792	0,135974
67	OASA	14439716356	1152426070	0,0798	0,046611
68	PADI	2,45423E+11	13151101962	0,0536	0,038193
69	PBSA	7,56764E+11	3,789E+11	0,5007	0,116745
70	POWR	1,39433E+13	9,26931E+12	0,6648	0,134524
71	PRDA	5,77866E+11	4,51539E+11	0,7814	0,145845
72	SHIP	5,81821E+11	1,56605E+11	0,2692	0,085598
73	SIDO	2,151E+12	8,46384E+11	0,3935	0,103495
74	SILO	1,58623E+12	1,34159E+12	0,8458	0,151734
75	SMBR	1,19859E+12	2,44448E+11	0,2039	0,074510
76	SSMS	2,11361E+12	1,64757E+12	0,7795	0,145669

77	TARA	9,69041E+11	3,42042E+11	0,3530	0,098023
78	TGRA	2,76987E+11	21412285867	0,0773	0,045873
79	TOPS	2,78477E+12	2,14985E+12	0,7720	0,144967
80	VICO	7,72642E+11	83269793796	0,1078	0,054164
81	WIIM	741.062.811.864	456.713.718.866	0,6163	0,129525
82	WSBP	4,33241E+12	3,00158E+12	0,6928	0,137331
83	WSKT	5,116E+12	4,49578E+12	0,8788	0,154666
84	WTON	2917400751	2187382982	0,7498	0,142864
85	ZINC	5,56844E+11	4,09879E+11	0,7361	0,141553

**Lampiran 8 : Data Perhitungan Return On Asset (ROA)**

$$ROA = \frac{Net\ Income}{Total\ Asset} \times 100\%$$

NO	PERUSAHAAN	NET INCOME	TOTAL ASSET	ROA (ASLI)	ROA (THILNEGER)
1	ACST	52670156329	7,54771E+11	0,0698	0,043585
2	AGII	5,97702E+11	4,95345E+12	0,1207	0,057312
3	AGRS	12629000000	2,50928E+12	0,0050	0,011705
4	ALTO	324242673	213.200.517.834	0,0015	0,006434
5	APII	19622396797	1,7858E+11	0,1099	0,054691
6	ARTO	2383690317	7,45647E+11	0,0032	0,009329
7	ASSA	9.864.660.224	1,42178E+12	0,0069	0,013743
8	ATIC	81481385410	1,9737E+12	0,0413	0,033523
9	BBHI	33929936090	2,02053E+12	0,0168	0,021380
10	BBMD	3,34624E+11	7,3688E+12	0,0454	0,035159
11	BBYB	12655881055	2,69195E+12	0,0047	0,011313
12	BELL	3787737459	3,87981E+11	0,0098	0,016302
13	BIKA	1,70315E+11	1,7334E+12	0,0983	0,051717
14	BIRD	7,13202E+11	5,01191E+12	0,1423	0,062239
15	BMAS	23654038000	3,40328E+12	0,0070	0,013755
16	BOGA	74764000000	2,51192E+13	0,0030	0,009001
17	BOLT	3,02625E+11	9,11611E+11	0,3320	0,095062
18	BPII	32689352390	2,7902E+11	0,1172	0,056473
19	BSSR	42.198.332.800	997.627.172.120	0,0423	0,033933
20	CAMP	49802299009	1,03104E+12	0,0483	0,036261
21	CINT	1,24205E+11	2,62915E+11	0,4724	0,113401
22	CLEO	39015746963	4,63289E+11	0,0842	0,047880
23	CSIS	6136028979	2,52131E+11	0,0243	0,025739
24	DAYA	35031464000	1,26998E+11	0,2758	0,086654
25	DMAS	9,64567E+11	7,60283E+12	0,1269	0,058767
26	DNAR	7578510761	8,54801E+11	0,0089	0,015535
27	DPUM	36042533740	3,10943E+11	0,1159	0,056173
28	DWGL	1,45896E+11	1,78726E+12	0,0816	0,047140
29	DYAN	64951900135	1,41845E+12	0,0458	0,035306
30	ESSA	125.536.771.620	714.615.910.670	0,1757	0,069152
31	FINN	7717350532	8,66961E+11	0,0089	0,015567
32	FIRE	5510871649	3,33255E+11	0,0165	0,021217
33	FORZ	7819896453	4,276E+11	0,0183	0,022312
34	GAMA	4.004.220.852	1.041.748.952.642	0,0038	0,010229
35	HOKI	43399842450	3,70245E+11	0,1172	0,056488



36	HOTL	17125821349	8,43617E+11	0,0203	0,023508
37	IBFN	31252896720	2,35528E+12	0,0133	0,019006
38	IBST	81.940.592.732	1.589.194.634.733	0,0516	0,037464
39	IDPR	1,80445E+11	9,22263E+11	0,1957	0,072980
40	IMJS	66015699	5,67691E+12	0,0000	0,000563
41	IMPC	1,85782E+11	1,64481E+12	0,1130	0,055450
42	IPCM	1,17064E+11	5,9837E+11	0,1956	0,072977
43	JGLE	2,45715E+11	4,31771E+12	0,0569	0,039359
44	JMAS	58122759	70822435698	0,0008	0,004727
45	KINO	2,04551E+11	1,86338E+12	0,1098	0,054665
46	KMTR	2,04642E+11	3,80682E+12	0,0538	0,038254
47	KOBX	100.133.536.570	1.211.942.018.650	0,0826	0,047425
48	KRAH	14665962550	2,28799E+11	0,0641	0,041772
49	LINK	5,57887E+11	3,2262E+12	0,1729	0,068610
50	MAPB	1,19771E+11	1,23383E+12	0,0971	0,051405
51	MARI	32141755569	1,56265E+11	0,2057	0,074828
52	MARK	21156413510	1,70938E+11	0,1238	0,058044
53	MDIA	118963773	984900277	0,1208	0,057341
54	MGNA	3813534071	3,38764E+11	0,0113	0,017505
55	MIKA	5,41443E+11	2,15667E+12	0,2511	0,082669
56	MINA	2669065147	1,17113E+11	0,0228	0,024908
57	MLPT	28509146000	1,00425E+12	0,0284	0,027799
58	MMLP	2,86E+11	2,139E+12	0,1337	0,060330
59	MPOW	7382907000	3,50204E+11	0,0211	0,023956
60	MSKY	65.339.000.000	3.447.663.000.000	0,0190	0,022713
61	MTRA	9849612036	2,59288E+11	0,0380	0,032157
62	MTWI	5475553589	2,76988E+11	0,0198	0,023198
63	NASA	166250000	8,90712E+11	0,0002	0,002254
64	NIRO	108.202.871	2.102.358.283.886	0,0001	0,001184
65	NOBU	3706000000	1,21752E+12	0,0030	0,009103
66	NRCA	91862980549	8,35886E+11	0,1099	0,054696
67	OASA	2756577041	14439716356	0,1909	0,072088
68	PADI	14676638717	2,45423E+11	0,0598	0,040347
69	PBSA	1,75653E+11	7,56764E+11	0,2321	0,079489
70	POWR	1,09919E+12	1,39433E+13	0,0788	0,046325
71	PRDA	66503624672	5,77866E+11	0,1151	0,055971
72	SHIP	61116019592	5,81821E+11	0,1050	0,053474
73	SIDO	3,87538E+11	2,151E+12	0,1802	0,070032
74	SILO	51959602529	1,58623E+12	0,0328	0,029861
75	SMBR	2,98513E+11	1,19859E+12	0,2491	0,082339
76	SSMS	3,44844E+11	2,11361E+12	0,1632	0,066643

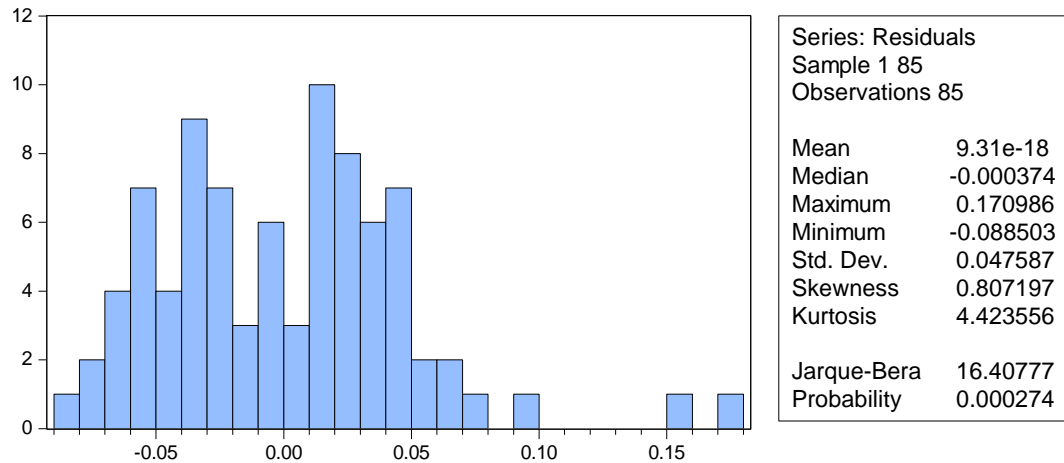
77	TARA	4125390824	9,69041E+11	0,0043	0,010765
78	TGRA	231388999	2,76987E+11	0,0008	0,004769
79	TOPS	2,01223E+11	2,78477E+12	0,0723	0,044351
80	VICO	1,10254E+11	7,72642E+11	0,1427	0,062325
81	WIIM	129.537.165.558	741.062.811.864	0,1748	0,068981
82	WSBP	4,2902E+11	4,33241E+12	0,0990	0,051920
83	WSKT	1,72457E+11	5,116E+12	0,0337	0,030292
84	WTON	241206242	2917400751	0,0827	0,047441
85	ZINC	34914108521	5,56844E+11	0,0627	0,041313

**Lampiran 9 : Hasil Pengujian Statistik Deskriptif**

	UNDR	UDW	AUD	AGE	LEV	ROA
Mean	0.090695	0.071819	0.023293	0.230137	0.121315	0.041342
Median	0.080103	0.000000	0.000000	0.209312	0.132455	0.041313
Maximum	0.305120	0.164990	0.164990	0.358052	0.156420	0.113401
Minimum	0.013339	0.000000	0.000000	0.113965	0.028470	0.000563
Std. Dev.	0.055444	0.082287	0.057791	0.056630	0.032064	0.024685
Skewness	1.127849	0.261018	2.060999	0.206669	-1.162230	0.317565
Kurtosis	4.961136	1.068131	5.247717	1.972623	3.469606	2.564444
Jarque-Bera Probability	31.64204 0.000000	14.18311 0.000832	78.06931 0.000000	4.343333 0.113987	19.91709 0.000047	2.100564 0.349839
Sum	7.709046	6.104630	1.979880	19.56167	10.31178	3.514053
Sum Sq. Dev.	0.258221	0.568773	0.280544	0.269384	0.086363	0.051186
Observations	85	85	85	85	85	85

## Lampiran 10 : Hasil Uji Asumsi Klasik

### Lampiran 10.1 : Hasil Uji Normalitas



### Lampiran 10.2 : Hasil Uji Multikolinieritas

Variance Inflation Factors  
Date: 11/28/18 Time: 21:43  
Sample: 1 85  
Included observations: 85

Variable	Coefficient Variance	Uncentered VIF	Centered VIF
C	0.001187	41.90972	NA
UDW	0.004963	2.075868	1.172255
AUD	0.008982	1.218601	1.046564
AGE	0.008979	17.79183	1.004524
LEV	0.031189	17.32265	1.118665
ROA	0.058275	4.754846	1.238816

### Lampiran 10.3 : Hasil Uji Autokorelasi

Breusch-Godfrey Serial Correlation LM Test:

F-statistic	0.128761	Prob. F(2,77)	0.8794
Obs*R-squared	0.283330	Prob. Chi-Square(2)	0.8679

Test Equation:

Dependent Variable: RESID

Method: Least Squares

Date: 11/28/18 Time: 21:57

Sample: 1 85

Included observations: 85

Presample missing value lagged residuals set to zero.

Variable	Coefficient	Std. Error	t-Statistic	Prob.
C	-0.001331	0.035411	-0.037588	0.9701
UDW	-0.004997	0.072533	-0.068893	0.9453
AUD	0.007771	0.097123	0.080013	0.9364
AGE	0.006480	0.097001	0.066808	0.9469
LEV	0.000257	0.181821	0.001412	0.9989
ROA	-0.000882	0.244402	-0.003607	0.9971
RESID(-1)	0.033865	0.120924	0.280056	0.7802
RESID(-2)	-0.050803	0.116924	-0.434496	0.6651

R-squared	0.003333	Mean dependent var	9.31E-18
Adjusted R-squared	-0.087273	S.D. dependent var	0.047587
S.E. of regression	0.049620	Akaike info criterion	-3.079455
Sum squared resid	0.189585	Schwarz criterion	-2.849558
Log likelihood	138.8768	Hannan-Quinn criter.	-2.986984
F-statistic	0.036789	Durbin-Watson stat	1.974043
Prob(F-statistic)	0.999934		

### Lampiran 10.4 : Hasil Uji Heteroskedastisitas

Heteroskedasticity Test: Harvey

F-statistic	1.623807	Prob. F(5,79)	0.1634
Obs*R-squared	7.921551	Prob. Chi-Square(5)	0.1606
Scaled explained SS	6.713239	Prob. Chi-Square(5)	0.2429

Test Equation:

Dependent Variable: LRESID2

Method: Least Squares

Date: 11/28/18 Time: 21:44

Sample: 1 85

Included observations: 85

Variable	Coefficient	Std. Error	t-Statistic	Prob.
C	-9.217330	1.418393	-6.498430	0.0000
UDW	-2.776273	2.899948	-0.957353	0.3413
AUD	-5.136832	3.901498	-1.316631	0.1918
AGE	6.000869	3.900703	1.538407	0.1279
LEV	10.13883	7.270015	1.394610	0.1670
ROA	-6.780661	9.937477	-0.682332	0.4970

R-squared	0.093195	Mean dependent var	-7.205678
Adjusted R-squared	0.035802	S.D. dependent var	2.057148
S.E. of regression	2.019988	Akaike info criterion	4.312033
Sum squared resid	322.3477	Schwarz criterion	4.484456
Log likelihood	-177.2614	Hannan-Quinn criter.	4.381386
F-statistic	1.623807	Durbin-Watson stat	2.271872
Prob(F-statistic)	0.163383		

**Lampiran 11 : Hasil Uji Statistik t**

Dependent Variable: UNDR  
 Method: Least Squares  
 Date: 11/28/18 Time: 21:42  
 Sample: 1 85  
 Included observations: 85

Variable	Coefficient	Std. Error	t-Statistic	Prob.
C	0.099112	0.034456	2.876504	0.0052
UDW	-0.098344	0.070446	-1.396020	0.1666
AUD	-0.325205	0.094776	-3.431315	0.0010
AGE	0.206768	0.094756	2.182109	0.0321
LEV	-0.194750	0.176604	-1.102750	0.2735
ROA	-0.429072	0.241402	-1.777416	0.0793
R-squared	0.263346	Mean dependent var		0.090695
Adjusted R-squared	0.216722	S.D. dependent var		0.055444
S.E. of regression	0.049070	Akaike info criterion		-3.123175
Sum squared resid	0.190219	Schwarz criterion		-2.950752
Log likelihood	138.7349	Hannan-Quinn criter.		-3.053822
F-statistic	5.648320	Durbin-Watson stat		1.916007
Prob(F-statistic)	0.000167			

**Lampiran 12 : Hasil Uji Koefisien Determinasi R<sup>2</sup>**

Dependent Variable: UNDR  
 Method: Least Squares  
 Date: 11/28/18 Time: 21:42  
 Sample: 1 85  
 Included observations: 85

Variable	Coefficient	Std. Error	t-Statistic	Prob.
C	0.099112	0.034456	2.876504	0.0052
UDW	-0.098344	0.070446	-1.396020	0.1666
AUD	-0.325205	0.094776	-3.431315	0.0010
AGE	0.206768	0.094756	2.182109	0.0321
LEV	-0.194750	0.176604	-1.102750	0.2735
ROA	-0.429072	0.241402	-1.777416	0.0793
R-squared	0.263346	Mean dependent var		0.090695
Adjusted R-squared	0.216722	S.D. dependent var		0.055444
S.E. of regression	0.049070	Akaike info criterion		-3.123175
Sum squared resid	0.190219	Schwarz criterion		-2.950752
Log likelihood	138.7349	Hannan-Quinn criter.		-3.053822
F-statistic	5.648320	Durbin-Watson stat		1.916007
Prob(F-statistic)	0.000167			