

LAMPIRAN

Lampiran 1. Data Perusahaan yang Menjadi Sampel

No.	Kode	Nama Perusahaan
1	APLN	Agung Podomoro Land Tbk
2	ASRI	Alam Sutera Reality Tbk
3	BEST	Bekasi Fajar Industrial Estate Tbk
4	BKSL	Sentury City Tbk
5	BSDE	PT Bumi Serpong Damai Tbk
6	CTRA	Ciputra Development Tbk
7	DART	Dita Anggada Reality Tbk
8	DILD	Intiland Development Tbk
9	DMAS	PT Puradelta Lestari Tbk
10	EMDE	Megapolitan Developments Tbk
11	GMTD	Gowa Makassar Tourism Development Tbk
12	GPRA	Perdana Gapura Prima Tbk
13	JRPT	Jaya Real Property Tbk
14	KIJA	Kawasan Industri Jababeka Tbk
15	LPKR	Lippo Karawaci Tbk
16	MKPI	Metropolitan Ketjana Tbk
v17	MTLA	Metropolitan Land Tbk
18	PPRO	PT PP Properti Tbk
19	PWON	Pakuwon Jati Tbk
20	RDTX	Roda Vivatex Tbk
21	SMRA	PT Summarecon Agung Tbk

Lampiran 2. Data Sampel

$$DPR = \frac{DPS}{EPS}$$

No.	Kode	Tahun	Dividen	EPS	DPR
1	APLN	2013	6	45,38	0,132216836
2	APLN	2016	2	45,84	0,043630017
3	ASRI	2014	7	59,9	0,116861436
4	ASRI	2016	1,5	25,97	0,057758953
5	BEST	2015	1,23	21,97	0,055985435
6	BEST	2016	3,43	34,86	0,098393574
7	BKSL	2013	0,25	19,27	0,012973534
8	BSEDE	2013	15	166,07	0,090323358
9	BSEDE	2014	15	217,53	0,068956006
10	BSEDE	2015	5	122,17	0,040926578
11	BSEDE	2016	5	105,86	0,047232193
12	CTRA	2013	19	93,2	0,203862661
13	CTRA	2015	14,25	122,96	0,115891347
14	CTRA	2016	4,75	75,9	0,062582345
15	DART	2013	28	57,55	0,486533449
16	DART	2016	30	61,08	0,491159136
17	DILD	2015	5	40,43	0,123670542
18	DILD	2016	5	28,69	0,174276751
19	DMAS	2017	6,5	5,28	1,231060606
20	EMDE	2014	1	13,44	0,074404762
21	EMDE	2015	2	18,29	0,109349371
22	EMDE	2016	2	19,54	0,102354145
23	GMTD	2013	25	855,98	0,02920629
24	GMTD	2014	45	1167	0,038560411
25	GMTD	2015	50	904,54	0,055276715
26	GMTD	2016	65	1181,83	0,05499945
27	GPRA	2015	5	17,04	0,29342723
28	JRPT	2013	13,5	39,73	0,339793607
29	JRPT	2015	21	63,26	0,331963326
30	JRPT	2016	24	74,03	0,324192895
31	KIJA	2013	0,35	5,19	0,06743738
32	KIJA	2014	0,63	8,19	0,076923077
33	KIJA	2015	1,39	16,38	0,084859585
34	LPKR	2013	1,94	53,18	0,03647988
35	LPKR	2014	3,5	44,38	0,078864353

36	LPKR	2016	14,05	69,01	0,203593682
37	MKPI	2013	223,7	461,37	0,484860307
38	MKPI	2014	327	938,24	0,348524898
39	MKPI	2015	369	1264,9	0,291722666
40	MKPI	2016	410	385,54	1,063443482
41	MTLA	2015	4,2	31,35	0,133971292
42	MTLA	2016	5,3	41,35	0,128174123
43	MTLA	2013	6,5	31,79	0,204466813
44	PPRO	2015	4,27	8,22	0,51946472
45	PPRO	2016	1,3	26,02	0,049961568
46	PWON	2013	4,5	23,6	0,190677966
47	PWON	2014	4,5	53,97	0,083379655
48	PWON	2015	4,5	29,08	0,15474553
49	PWON	2016	4,5	36,97	0,121720314
50	RDTX	2013	10,5	737,46	0,01423806
51	SMRA	2013	5	73,76	0,067787419
52	SMRA	2015	5	41,94	0,11921793
53	SMRA	2016	23	75,96	0,302790943

ROA

$$ROA = \frac{\text{Earning After Tax}}{\text{Total Asset}}$$

No.	Kode	Tahun	Laba Setelah Pajak	Total Aset	ROA
1	APLN	2013	930.240.497.000	19.679.908.990.000	0,047268537
2	APLN	2016	939.737.108.000	25.711.953.382.000	0,036548647
3	ASRI	2014	1.176.955.123.000	16.924.366.954.000	0,069542047
4	ASRI	2016	510.243.279.000	20.186.130.682.000	0,025276923
5	BEST	2015	211.935.909.297	4.631.315.439.422	0,045761493
6	BEST	2016	336.287.878.603	5.205.373.116.830	0,064603991
7	BKSL	2013	605.095.613.999	10.665.713.361.698	0,056732784
8	BSEDE	2013	2.905.648.505.498	22.572.159.491.478	0,128727094
9	BSEDE	2014	3.996.463.893.465	28.134.725.397.393	0,142047375
10	BSEDE	2015	2.351.380.057.145	36.022.148.489.646	0,065275953
11	BSEDE	2016	2.037.537.680.130	38.292.205.983.731	0,053210245
12	CTRA	2013	1.413.388.450.323	20.114.871.381.857	0,070265846
13	CTRA	2015	1.740.300.162.426	26.258.718.560.250	0,066275137
14	CTRA	2016	1.170.706.000.000	29.072.250.000.000	0,040268847
15	DART	2013	180.800.291.000	4.768.449.638.000	0,037915949
16	DART	2016	191.876.068.000	6.066.257.596.000	0,031630056
17	DILD	2015	419.044.195.464	10.288.572.076.882	0,040729092
18	DILD	2016	297.350.554.988	11.840.059.936.442	0,02511394
19	DMAS	2017	653.712.307.668	7.470.941.557.319	0,087500659
20	EMDE	2014	45.023.513.886	1.179.018.690.672	0,038187277
21	EMDE	2015	61.268.278.934	1.196.040.969.781	0,051225903
22	EMDE	2016	65.470.178.568	1.363.641.661.657	0,048011278
23	GMTD	2013	86.914.558.516	1.229.172.450.340	0,070709817
24	GMTD	2014	118.494.551.000	1.273.990.253.786	0,093010563
25	GMTD	2015	91.845.276.661	1.307.846.871.186	0,070226323
26	GMTD	2016	120.000.195.583	1.524.317.216.546	0,0787239
27	GPRA	2015	72.893.324.167	1.574.174.572.164	0,046305744
28	JRPT	2013	546.269.619.000	6.163.177.866.000	0,088634408
29	JRPT	2015	869.777.178.000	7.578.101.438.000	0,114775077
30	JRPT	2016	1.017.849.186.000	8.484.436.652.000	0,11996662
31	KIJA	2013	104.477.632.614	8.255.167.231.158	0,012656029
32	KIJA	2014	149.840.578.536	11.266.320.312.348	0,013299868
33	KIJA	2015	331.442.663.161	9.740.694.660.705	0,034026594
34	LPKR	2013	1.227.374.000.000	45.603.683.000.000	0,026913923
35	LPKR	2014	1.024.120.634.260	41.326.558.178.049	0,024781174

36	LPKR	2016	1.592.491.214.696	31.300.362.430.266	0,050877724
37	MKPI	2013	437.464.993.821	4.316.214.269.222	0,101353864
38	MKPI	2014	889.628.865.732	5.709.371.372.467	0,155819057
39	MKPI	2015	1.199.373.747.588	6.612.200.867.199	0,181387978
40	MKPI	2016	365.563.078.058	2.838.815.438.871	0,128773105
41	MTLA	2015	239.982.607.000	3.620.742.578.000	0,066279942
42	MTLA	2016	316.514.414.000	3.932.529.273.000	0,080486219
43	MTLA	2013	240.967.649.000	2.834.484.171.000	0,085012875
44	PPRO	2015	300.328.587.759	2.801.369.878.414	0,107207759
45	PPRO	2016	365.374.319.145	5.858.373.083.291	0,062367882
46	PWON	2013	1.136.547.541.000	9.298.245.408.000	0,122232474
47	PWON	2014	2.599.141.016.000	16.770.742.538.000	0,154980676
48	PWON	2015	1.400.554.118.000	18.778.122.467.000	0,074584353
49	PWON	2016	1.780.254.981.000	20.674.141.654.000	0,086110225
50	RDTX	2013	198.229.841.964	1.549.674.922.146	0,127917048
51	SMRA	2013	1.064.079.939.000	18.758.262.022.000	0,056725934
52	SMRA	2015	605.050.858.000	20.810.319.657.000	0,029074559
53	SMRA	2016	1.095.888.248.000	13.659.136.825.000	0,080231149

CR (Cash Ratio)

$$CR = \frac{\text{Cash} + \text{Equivalent}}{\text{Current Liabilities}}$$

No.	Kode	Tahun	Kas dan Setara Kas	Hutang Lancar	CR
1	APLN	2013	3.177.138.834.000	5.208.638.817.000	0,609974879
2	APLN	2016	1.172.966.926.000	7.654.752.699.000	0,153233811
3	ASRI	2014	880.753.891.000	2.803.110.232.000	0,314205942
4	ASRI	2016	1.189.458.923.000	3.434.222.096.000	0,346354688
5	BEST	2015	378.227.520.732	384.484.715.527	0,983725765
6	BEST	2016	442.482.672.616	561.897.035.973	0,787479991
7	BKSL	2013	493.413.277.207	1.457.383.800.772	0,338560973
8	BSEDE	2013	4.331.624.074.336	4.436.117.210.208	0,976444911
9	BSEDE	2014	2.966.813.507.701	5.329.326.982.247	0,556695717
10	BSEDE	2015	6.109.239.577.200	6.146.403.064.486	0,99395362
11	BSEDE	2016	3.568.915.922.508	5.566.196.840.616	0,641176736
12	CTRA	2013	3.463.817.225.281	7.129.204.152.992	0,485863099
13	CTRA	2015	3.034.144.319.662	8.013.555.295.087	0,378626491
14	CTRA	2016	3.467.585.000.000	7.311.044.000.000	0,474294095
15	DART	2013	68.091.001.000	504.748.990.000	0,134900718
16	DART	2016	113.603.058.000	605.141.343.000	0,187729791
17	DILD	2015	404.576.741.480	3.285.725.170.548	0,123131644
18	DILD	2016	473.342.736.649	3.292.500.606.947	0,143763903
19	DMAS	2017	785.379.220.213	437.801.866.027	1,793914739
20	EMDE	2014	148.761.440.369	392.140.844.427	0,379357168
21	EMDE	2015	127.054.477.065	373.768.632.656	0,339928143
22	EMDE	2016	155.448.589.979	358.671.663.722	0,433400811
23	GMTD	2013	13.256.598.897	435.869.175.502	0,030414169
24	GMTD	2014	17.793.595.380	512.933.237.967	0,034689886
25	GMTD	2015	44.284.189.271	489.211.210.350	0,090521616
26	GMTD	2016	22.230.667.549	510.945.337.339	0,043508896
27	GPRA	2015	73.517.689.222	435.263.158.794	0,168904001
28	JRPT	2013	588.003.052.000	3.063.899.266.000	0,191913311
29	JRPT	2015	221.004.359.000	2.974.359.377.000	0,07430318
30	JRPT	2016	342.704.464.000	3.111.632.814.000	0,110136537
31	KIJA	2013	595.494.841.630	1.752.626.609.061	0,339772795
32	KIJA	2014	895.199.081.666	1.067.196.855.057	0,838832196
33	KIJA	2015	826.807.285.771	1.047.210.764.452	0,789532837
34	LPKR	2013	3.249.702.000.000	6.866.309.000.000	0,473282225
35	LPKR	2014	1.839.366.003.277	4.856.883.553.932	0,378713219

36	LPKR	2016	1.855.051.780.961	4.841.563.711.972	0,383151372
37	MKPI	2013	881.408.426.438	1.693.945.428.323	0,520328702
38	MKPI	2014	1.871.711.820.045	2.287.442.720.863	0,818255165
39	MKPI	2015	2.112.641.475.830	2.132.759.200.507	0,990567278
40	MKPI	2016	115.638.115.141	566.002.712.656	0,204306645
41	MTLA	2015	216.358.346.000	866.858.726.000	0,249588935
42	MTLA	2016	310.437.081.000	837.279.300.000	0,370768847
43	MTLA	2013	382.391.421.000	646.965.734.000	0,591053592
44	PPRO	2015	357.422.184.987	1.226.354.019.091	0,291451065
45	PPRO	2016	624.472.314.516	2.778.511.765.532	0,224750646
46	PWON	2013	2.133.582.174.000	2.849.867.237.000	0,748660199
47	PWON	2014	2.818.346.567.000	3.913.147.398.000	0,720224995
48	PWON	2015	2.084.067.509.000	4.423.677.906.000	0,471116468
49	PWON	2016	2.448.187.042.000	4.618.261.907.000	0,530110048
50	RDTX	2013	7.326.502.044	336.618.162.391	0,021765023
51	SMRA	2013	1.503.546.080.000	4.409.686.044.000	0,340964428
52	SMRA	2015	2.076.201.416.000	4.217.371.528.000	0,49229749
53	SMRA	2016	2.544.844.590.000	5.042.251.296.000	0,504704038

Growth

$$Growth = \frac{Total\ Asset_t - Total\ Asset_{t-1}}{Total\ Asset_{t-1}}$$

No.	Kode	Tahun	Total Aset -1	Total Aset	GROWTH
1	APLN	2013	15.195.642.352.000	19.679.908.990.000	0,295102144
2	APLN	2016	24.559.174.988.000	25.711.953.382.000	0,046938808
3	ASRI	2014	14.428.082.567.000	16.924.366.954.000	0,173015671
4	ASRI	2016	18.709.870.126.000	20.186.130.682.000	0,078902769
5	BEST	2015	3.652.993.439.542	4.631.315.439.422	0,267813785
6	BEST	2016	4.631.315.439.422	5.205.373.116.830	0,123951323
7	BKSL	2013	6.154.231.305.371	10.665.713.361.698	0,733069953
8	BSEDE	2013	16.756.718.027.575	22.572.159.491.478	0,347051341
9	BSEDE	2014	22.572.159.491.478	28.134.725.397.393	0,246434813
10	BSEDE	2015	28.134.725.397.393	36.022.148.489.646	0,280344769
11	BSEDE	2016	36.022.148.489.646	38.292.205.983.731	0,063018381
12	CTRA	2013	15.023.391.727.244	20.114.871.381.857	0,338903474
13	CTRA	2015	23.282.477.620.916	26.258.718.560.250	0,127831796
14	CTRA	2016	26.258.718.560.250	29.072.250.000.000	0,107146563
15	DART	2013	4.293.161.447.000	4.768.449.638.000	0,110708203
16	DART	2016	5.739.863.241.000	6.066.257.596.000	0,056864483
17	DILD	2015	9.004.884.010.541	10.288.572.076.882	0,142554648
18	DILD	2016	10.288.572.076.882	11.840.059.936.442	0,1507972
19	DMAS	2017	7.470.941.557.319	7.803.851.935.273	0,044560699
20	EMDE	2014	938.536.950.089	1.179.018.690.672	0,256230445
21	EMDE	2015	1.179.018.690.672	1.196.040.969.781	0,014437667
22	EMDE	2016	1.196.040.969.781	1.363.641.661.657	0,140129558
23	GMTD	2013	1.273.990.253.786	1.229.172.450.340	-0,035179079
24	GMTD	2014	1.524.317.216.546	1.273.990.253.786	-0,164222355
25	GMTD	2015	900.597.066.316	1.307.846.871.186	0,452199791
26	GMTD	2016	1.307.846.871.186	1.524.317.216.546	0,165516583
27	GPRA	2015	1.517.576.344.888	1.574.174.572.164	0,037295143
28	JRPT	2013	4.998.260.900.000	6.163.177.866.000	0,233064458
29	JRPT	2015	6.684.262.908.000	7.578.101.438.000	0,133722827
30	JRPT	2016	7.578.101.438.000	8.484.436.652.000	0,119599245
31	KIJA	2013	7.077.817.870.077	8.255.167.231.158	0,166343551
32	KIJA	2014	10.733.598.205.115	11.266.320.312.348	0,04963127
33	KIJA	2015	8.505.270.447.485	9.740.694.660.705	0,14525396
34	LPKR	2013	41.326.558.178.049	45.603.683.000.000	0,103495791
35	LPKR	2014	37.761.220.693.695	41.326.558.178.049	0,094417962

36	LPKR	2016	24.869.295.733.093	31.300.362.430.266	0,258594645
37	MKPI	2013	2.838.815.438.871	4.316.214.269.222	0,520427926
38	MKPI	2014	4.316.214.269.222	5.709.371.372.467	0,322772925
39	MKPI	2015	5.709.371.372.467	6.612.200.867.199	0,158131156
40	MKPI	2016	2.553.203.639.852	2.838.815.438.871	0,111864089
41	MTLA	2015	3.250.717.743.000	3.620.742.578.000	0,113828657
42	MTLA	2016	3.620.742.578.000	3.932.529.273.000	0,086111257
43	MTLA	2013	2.015.753.149.000	2.834.484.171.000	0,406166312
44	PPRO	2015	5.318.956.732.655	2.806.025.508.851	-0,472448142
45	PPRO	2016	8.826.283.788.338	5.318.956.732.655	-0,397373021
46	PWON	2013	7.565.819.916.000	9.298.245.408.000	0,228980535
47	PWON	2014	9.298.245.408.000	16.770.742.538.000	0,803645936
48	PWON	2015	16.770.742.538.000	18.778.122.467.000	0,119695352
49	PWON	2016	18.778.122.467.000	20.674.141.654.000	0,100969583
50	RDTX	2013	1.207.905.280.350	1.549.674.922.146	0,282944075
51	SMRA	2013	15.379.478.994.000	18.758.262.022.000	0,219694245
52	SMRA	2015	18.758.262.022.000	20.810.319.657.000	0,10939487
53	SMRA	2016	10.876.386.685.000	13.659.136.825.000	0,255852446

SIZE

$$SIZE = LN(\text{Total Asset})$$

No.	Kode	Tahun	Total Aset	SIZE
1	APLN	2013	19.679.908.990.000	30,61061938
2	APLN	2016	25.711.953.382.000	30,87797711
3	ASRI	2014	16.924.366.954.000	30,45977553
4	ASRI	2016	20.186.130.682.000	30,63601688
5	BEST	2015	4.631.315.439.422	29,16386206
6	BEST	2016	5.205.373.116.830	29,2807125
7	BKSL	2013	10.665.713.361.698	29,99805535
8	BSEDE	2013	22.572.159.491.478	30,74773838
9	BSEDE	2014	28.134.725.397.393	30,96802571
10	BSEDE	2015	36.022.148.489.646	31,2151551
11	BSEDE	2016	38.292.205.983.731	31,27626749
12	CTRA	2013	20.114.871.381.857	30,63248053
13	CTRA	2015	26.258.718.560.250	30,89901919
14	CTRA	2016	29.072.250.000.000	31,00080523
15	DART	2013	4.768.449.638.000	29,19304234
16	DART	2016	6.066.257.596.000	29,43376299
17	DILD	2015	10.288.572.076.882	29,96205489
18	DILD	2016	11.840.059.936.442	30,10250981
19	DMAS	2017	7.470.941.557.319	29,64204215
20	EMDE	2014	1.179.018.690.672	27,79570359
21	EMDE	2015	1.196.040.969.781	27,81003803
22	EMDE	2016	1.363.641.661.657	27,94117993
23	GMTD	2013	1.229.172.450.340	27,83736225
24	GMTD	2014	1.273.990.253.786	27,87317502
25	GMTD	2015	1.307.846.871.186	27,89940329
26	GMTD	2016	1.524.317.216.546	28,0525677
27	GPRA	2015	1.574.174.572.164	28,08475217
28	JRPT	2013	6.163.177.866.000	29,44961365
29	JRPT	2015	7.578.101.438.000	29,65628381
30	JRPT	2016	8.484.436.652.000	29,76925462
31	KIJA	2013	8.255.167.231.158	29,74186045
32	KIJA	2014	11.266.320.312.348	30,05283889
33	KIJA	2015	9.740.694.660.705	29,90733355
34	LPKR	2013	45.603.683.000.000	31,4510096
35	LPKR	2014	41.326.558.178.049	31,35252646
36	LPKR	2016	31.300.362.430.266	31,07465079

37	MKPI	2013	4.316.214.269.222	29,09339981
38	MKPI	2014	5.709.371.372.467	29,37313004
39	MKPI	2015	6.612.200.867.199	29,51993767
40	MKPI	2016	2.838.815.438.871	28,67440798
41	MTLA	2015	3.620.742.578.000	28,91770025
42	MTLA	2016	3.932.529.273.000	29,00030392
43	MTLA	2013	2.834.484.171.000	28,67288109
44	PPRO	2015	2.801.369.878.414	28,66112966
45	PPRO	2016	5.858.373.083.291	29,39889305
46	PWON	2013	9.298.245.408.000	29,86084683
47	PWON	2014	16.770.742.538.000	30,45065697
48	PWON	2015	18.778.122.467.000	30,56371361
49	PWON	2016	20.674.141.654.000	30,65990484
50	RDTX	2013	1.549.674.922.146	28,0690663
51	SMRA	2013	18.758.262.022.000	30,56265541
52	SMRA	2015	20.810.319.657.000	30,66647012
53	SMRA	2016	13.659.136.825.000	30,24542978

DER

$$DER = \frac{\text{Total Liabilities}}{\text{Total Equity}}$$

No.	Kode	Tahun	Total Hutang	Total Ekuitas	DER
1	APLN	2013	12.467.225.599.000	7.212.683.391.000	1,728514191
2	APLN	2016	15.741.190.673.000	9.970.762.709.000	1,57873486
3	ASRI	2014	10.553.173.020.000	6.371.193.934.000	1,656388603
4	ASRI	2016	12.998.285.601.000	7.187.845.081.000	1,808370305
5	BEST	2015	1.589.160.166.683	3.042.155.272.739	0,522379703
6	BEST	2016	1.814.537.354.523	3.390.835.762.307	0,535129827
7	BKSL	2013	3.785.870.536.508	6.879.842.825.190	0,550284452
8	BSEDE	2013	9.156.861.204.571	13.415.298.286.907	0,682568588
9	BSEDE	2014	9.661.295.391.976	18.473.430.005.417	0,5229833
10	BSEDE	2015	13.925.458.006.310	22.096.690.483.336	0,630205596
11	BSEDE	2016	13.939.298.974.339	24.352.907.009.392	0,572387476
12	CTRA	2013	10.349.358.292.156	9.765.513.089.701	1,059786434
13	CTRA	2015	13.208.497.280.343	13.050.221.279.907	1,012128224
14	CTRA	2016	14.774.323.000.000	14.297.927.000.000	1,033319236
15	DART	2013	1.841.771.878.000	2.926.677.760.000	0,629304634
16	DART	2016	2.442.909.056.000	3.623.348.540.000	0,674213101
17	DILD	2015	5.517.743.393.322	4.770.828.683.560	1,156558694
18	DILD	2016	6.782.581.912.231	5.057.478.024.211	1,341099631
19	DMAS	2017	465.103.754.344	7.005.837.802.975	0,066388028
20	EMDE	2014	576.053.997.101	602.964.693.571	0,955369366
21	EMDE	2015	536.106.853.364	659.934.116.417	0,812364204
22	EMDE	2016	675.649.658.921	687.992.002.736	0,982060338
23	GMTD	2013	590.413.630.191	638.758.820.149	0,924313859
24	GMTD	2014	719.732.960.562	554.257.293.224	1,298553883
25	GMTD	2015	904.423.011.764	403.423.859.422	2,241867928
26	GMTD	2016	857.970.061.541	666.347.155.005	1,287572184
27	GPRA	2015	626.943.804.650	947.230.767.514	0,661870186
28	JRPT	2013	3.479.530.351.000	2.683.647.514.000	1,296567576
29	JRPT	2015	3.437.170.298.000	4.140.931.140.000	0,830047683
30	JRPT	2016	3.578.037.749.000	4.906.398.903.000	0,729259447
31	KIJA	2013	4.069.135.357.955	4.186.031.873.203	0,972074624
32	KIJA	2014	5.366.080.073.786	5.900.240.238.562	0,909468065
33	KIJA	2015	4.762.940.390.118	4.977.754.270.587	0,956845222
34	LPKR	2013	23.528.544.000.000	22.075.139.000.000	1,065838997
35	LPKR	2014	22.409.793.619.707	18.916.764.558.342	1,184652563

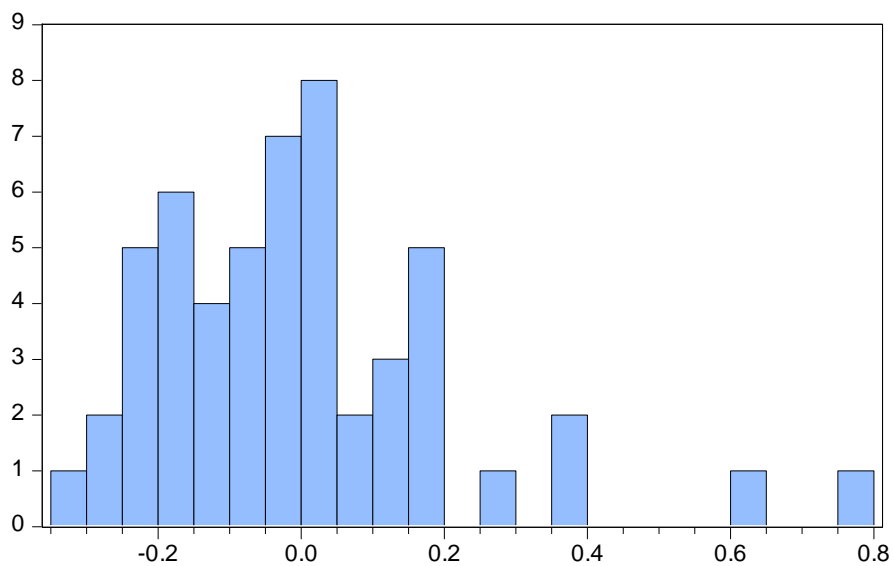
36	LPKR	2016	17.122.789.125.041	14.177.573.305.225	1,207737654
37	MKPI	2013	2.154.420.021.554	2.161.794.247.668	0,99658884
38	MKPI	2014	2.880.175.893.867	2.829.195.478.600	1,018019404
39	MKPI	2015	2.897.296.559.011	3.714.904.308.188	0,779911491
40	MKPI	2016	920.106.415.024	1.918.709.023.847	0,479544529
41	MTLA	2015	1.407.525.853.000	2.213.216.725.000	0,635963861
42	MTLA	2016	1.430.126.743.000	2.502.402.530.000	0,571501477
43	MTLA	2013	1.069.728.862.000	1.764.755.309.000	0,606162711
44	PPRO	2015	2.801.369.878.414	2.517.586.854.239	1,112720252
45	PPRO	2016	5.858.373.083.291	2.967.910.705.047	1,973904765
46	PWON	2013	5.195.736.526.000	4.102.508.882.000	1,266477825
47	PWON	2014	8.487.671.758.000	8.283.070.780.000	1,024701102
48	PWON	2015	9.323.066.490.000	9.455.055.977.000	0,986040327
49	PWON	2016	9.654.447.854.000	11.019.693.800.000	0,876108541
50	RDTX	2013	402.415.984.925	1.147.258.937.221	0,350762999
51	SMRA	2013	11.228.512.108.000	7.529.749.914.000	1,491219793
52	SMRA	2015	12.644.764.172.000	8.165.555.485.000	1,54854917
53	SMRA	2016	9.001.470.158.000	4.657.666.667.000	1,932613646

Lampiran 4. Analisis Statistik Deskriptif

	DPR	C	ROA	CR	GROWTH	SIZE	DER
Mean	0.214845	1.000000	0.074222	0.468996	0.215228	29.41717	1.021996
Median	0.116861	1.000000	0.066280	0.383151	0.142555	29.76925	0.972075
Maximum	1.231061	1.000000	0.186867	1.793915	1.672483	31.45101	2.865877
Minimum	0.012974	1.000000	0.012656	0.021765	-0.164222	21.16722	0.066388
Std. Dev.	0.263702	0.000000	0.042410	0.343834	0.265182	1.921696	0.498911
Skewness	2.407332	NA	0.848529	1.273575	3.492568	-2.670143	1.251062
Kurtosis	8.542860	NA	3.105231	5.541407	18.83140	11.80676	5.416339
Jarque-Bera	119.0386	NA	6.384461	28.59068	661.2310	234.2550	26.71933
Probability	0.000000	NA	0.041080	0.000001	0.000000	0.000000	0.000002
Sum	11.38679	53.00000	3.933749	24.85679	11.40711	1559.110	54.16580
Sum Sq. Dev.	3.616009	0.000000	0.093525	6.147533	3.656728	192.0316	12.94342
Observations	53	53	53	53	53	53	53

Lampiran 5. Uji Asumsi Klasik

Uji Normalitas



Series: Residuals
Sample 1 53
Observations 53

Mean	-2.83e-17
Median	-0.011659
Maximum	0.754475
Minimum	-0.303420
Std. Dev.	0.206136
Skewness	1.450439
Kurtosis	5.919260

Jarque-Bera	37.40292
Probability	0.000000

Uji Multikolinearitas

Variance Inflation Factors
Date: 08/20/18 Time: 14:31
Sample: 1 53
Included observations: 53

Variable	Coefficient Variance	Uncentered VIF	Centered VIF
C	0.325611	367.0816	NA
ROA	0.719337	5.898462	1.431034
CR	0.009230	3.495863	1.206998
GROWTH	0.018630	2.422056	1.449116
SIZE	0.000318	311.6630	1.299468
DER	0.004194	6.092845	1.154634

Uji Heteroskedastisitas

Heteroskedasticity Test: White

F-statistic	1.901864	Prob. F(20,32)	0.0509
Obs*R-squared	28.78433	Prob. Chi-Square(20)	0.0921
Scaled explained SS	55.67623	Prob. Chi-Square(20)	0.0000

Test Equation:

Dependent Variable: RESID^2

Method: Least Squares

Date: 08/05/18 Time: 12:35

Sample: 1 53

Included observations: 53

Variable	Coefficient	Std. Error	t-Statistic	Prob.
C	-4.414680	10.26753	-0.429965	0.6701
ROA	25.54800	14.33275	1.782491	0.0842
ROA^2	-1.700767	11.50398	-0.147842	0.8834
ROA*CR	-0.565236	1.332372	-0.424233	0.6742
ROA*GROWTH	-2.461857	2.509362	-0.981069	0.3339
ROA*SIZE	-0.756291	0.463190	-1.632789	0.1123
ROA*DER	-2.109834	1.678472	-1.256997	0.2179
CR	2.077669	1.488197	1.396099	0.1723
CR^2	0.106322	0.140781	0.755226	0.4556
CR*GROWTH	0.420101	0.386957	1.085654	0.2857
CR*SIZE	-0.074677	0.050475	-1.479472	0.1488
CR*DER	0.015620	0.189275	0.082526	0.9347
GROWTH	-3.935826	1.714632	-2.295435	0.0284
GROWTH^2	0.201906	0.290003	0.696222	0.4913
GROWTH*SIZE	0.111037	0.053468	2.076690	0.0459
GROWTH*DER	0.551961	0.259728	2.125148	0.0414
SIZE	0.252505	0.646122	0.390800	0.6985
SIZE^2	-0.003373	0.010136	-0.332816	0.7414
SIZE*DER	-0.001049	0.038455	-0.027282	0.9784
DER	-0.098981	1.230691	-0.080427	0.9364
DER^2	0.038451	0.072081	0.533444	0.5974

R-squared	0.543101	Mean dependent var	0.041690
Adjusted R-squared	0.257538	S.D. dependent var	0.093351
S.E. of regression	0.080437	Akaike info criterion	-1.914781
Sum squared resid	0.207045	Schwarz criterion	-1.134099
Log likelihood	71.74169	Hannan-Quinn criter.	-1.614568
F-statistic	1.901864	Durbin-Watson stat	2.204136
Prob(F-statistic)	0.050877		

Uji Autokorelasi

Dependent Variable: DPR
 Method: Least Squares
 Date: 08/05/18 Time: 12:30
 Sample: 1 53
 Included observations: 53

Variable	Coefficient	Std. Error	t-Statistic	Prob.
C	2.067859	0.570623	3.623860	0.0007
ROA	0.470793	0.222279	2.118026	0.0358
CR	0.254175	0.096075	2.645596	0.0111
GROWTH	-0.292018	0.136493	-2.139434	0.0376
SIZE	0.067880	0.017836	3.805726	0.0004
DER	-0.012769	0.064760	-0.197169	0.8445
R-squared	0.388944	Mean dependent var		0.214845
Adjusted R-squared	0.323939	S.D. dependent var		0.263702
S.E. of regression	0.216823	Akaike info criterion		-0.113196
Sum squared resid	2.209582	Schwarz criterion		0.109856
Log likelihood	8.999699	Hannan-Quinn criter.		-0.027421
F-statistic	5.983216	Durbin-Watson stat		1.824027
Prob(F-statistic)	0.000232			

Lampiran 6. Analisis Regresi Linear Berganda

Dependent Variable: DPR
 Method: Least Squares
 Date: 08/05/18 Time: 12:30
 Sample: 1 53
 Included observations: 53

Variable	Coefficient	Std. Error	t-Statistic	Prob.
C	2.067859	0.570623	3.623860	0.0007
ROA	0.470793	0.222279	2.118026	0.0358
CR	0.254175	0.096075	2.645596	0.0111
GROWTH	-0.292018	0.136493	-2.139434	0.0376
SIZE	0.067880	0.017836	3.805726	0.0004
DER	-0.012769	0.064760	-0.197169	0.8445
R-squared	0.388944	Mean dependent var		0.214845
Adjusted R-squared	0.323939	S.D. dependent var		0.263702
S.E. of regression	0.216823	Akaike info criterion		-0.113196
Sum squared resid	2.209582	Schwarz criterion		0.109856
Log likelihood	8.999699	Hannan-Quinn criter.		-0.027421
F-statistic	5.983216	Durbin-Watson stat		1.824027
Prob(F-statistic)	0.000232			