

LAMPIRAN

Lampiran 1

Daftar Perusahaan yang Menjadi Sampel

No.	Nama Perusahaan	Kode
1	Asahimas Flat Glass Tbk.	AMFG
2	Astra Otoparts Tbk.	AUTO
3	Astra Internasional Tbk.	ASSI
4	Indo Kordsa Tbk.	BRAM
5	Mitrabahtera Segara Sejati Tbk.	BRNA
6	Duta Pertiwi Nusantara Tbk.	DPNS
7	Eterindo Wahanatama Tbk.	ETWA
8	Impack Pratama Industri Tbk.	IMPC
9	Indal Aluminium Industry Tbk.	INAI
10	Intanwijaya Internasional Tbk.	INCI
11	Indofood Sukses Makmur Tbk.	INDF
12	Kimia Farma Tbk.	KAEF
13	Lion Metal Works Tbk.	LION
14	Multistrada Arah Sarana Tbk.	MASA
15	Mayora Indah Tbk.	MYOR
16	Pan Brothers Tbk.	PBRX
17	Pelangi Indah Canindo Tbk.	PICO
18	Supremme Cable Manufacturing & Commerce Tbk.	SCCO
19	Sekar Bumi Tbk.	SKBM
20	Sekar Laut Tbk.	SKLT
21	Semen Baturaja Tbk.	SMBR

22	Semen Indonesia Tbk.	SMGR
23	Selamat Sempurna Tbk.	SMSM
24	Mandom Indonesia Tbk.	TCID
25	Pabrik Kertas Tjiwi Kimia Tbk.	TKIM
26	Trisula Internasional Tbk.	TRIS
27	Ultra Jaya Milk Industry & Trading Company Tbk.	ULTJ
28	Unggul Indah Cahaya Tbk.	UNIC
29	Unilever Indonesia Tbk.	UNVR
30	Wismilak Inti Makmur Tbk.	WIIM

Lampiran 2

Data Nilai Perusahaan (Q) , Kebijakan Deviden (DPR), Kebijakan Hutang (DER),
Kepemilikan Manajerial (KM), Kepemilikan Institusional (KI)

Kode	Tahun	Nilai perusahaan (Q)	Kebijakan Deviden (DPR)	Kebijakan Hutang (DER)	Kepemilikan Manajerial (KM)	Kepemilikan Institusional (KI)
AMFG	2013	1.07834	0.08086	0.28000	0.005	0.41183
AMFG	2014	1.07887	0.07570	0.23000	0.005	0.41183
AMFG	2015	0.87178	1.10171	0.26000	0.005	0.41183
AMFG	2016	0.88350	0.13331	0.46000	0.005	0.41183
AMFG	2017	0.83638	0.37197	0.64000	0.005	0.41183
AUTO	2014	1.70276	0.43087	0.42000	0.00021	0.83346
ASSI	2013	1.79021	0.38097	1.02000	0.00407	0.67864
ASSI	2014	1.76375	0.39521	0.96000	0.00407	0.67864
ASSI	2015	1.47413	0.56005	0.94000	0.00037	0.05482
ASSI	2016	1.74505	0.37160	0.93000	0.00040	0.05223
ASSI	2017	1.60777	0.49365	0.89000	0.00040	0.05223
BRAM	2014	1.00738	0.26230	0.73000	0.27770	0.05610
BRNA	2016	1.02330	0.24209	1.03000	0.05090	0.56960
DPNS	2013	2.11242	0.11440	0.15000	0.05710	0.51230
ETWA	2013	1.48440	0.19960	1.90000	0.08000	0.07480
IMPC	2016	2.63824	0.18900	0.86000	0,0165	0.70480
INAI	2013	0.96073	1.57783	5.06000	0.00218	0.77935
INAI	2014	0.96104	0.11489	5.15000	0.00435	0.77935
INAI	2015	0.91617	0.38748	4.55000	0.00505	0.77987
INAI	2016	0.96478	0.40098	4.10000	0.00706	0.77987
INAI	2017	0.97799	0.47332	3.91000	0.00706	0.77987

INCI	2015	0.41706	0.10670	0.10000	0.13920	0.01160
INDF	2016	1.26700	0.02205	1.06000	0.00706	0.15150
KAEF	2016	3.81884	0.20000	1.03000	0.14000	0.05269
LION	2013	1.41801	0.27938	0.20000	0.00025	0.13407
LION	2014	1.06627	0.42461	0.35000	0.00025	0.13407
LION	2015	1.14323	0.45213	0.41000	0.00249	0.13407
LION	2016	1.11857	0.49135	0.39000	0.00249	0.13407
LION	2017	0.90522	2.24136	0.42000	0.00249	0.13407
MASA	2013	0.90311	0.40760	0.68000	0.03060	0.16710
MYOR	2016	3.49943	0.34650	1.15000	0.25220	0.05810
PBRX	2013	1.02796	0.04814	1.36000	0.00198	0.55376
PBRX	2014	1.15947	0.05438	0.79000	0.00198	0.55376
PBRX	2015	1.07149	0.06375	1.05000	0.00198	0.61373
PBRX	2016	1.00670	0.07117	1.17000	0.04165	0.60043
PBRX	2017	1.03689	0.05420	1.50000	0.04165	0.60043
PICO	2016	0.78047	0.22710	1.34000	0.04000	0.19520
SCCO	2013	1.11178	0.48966	1.49000	0.05763	0.55452
SCCO	2014	0.99859	0.22408	1.03000	0.05763	0.55452
SCCO	2015	1.43189	0.25840	0.92000	0.05763	0.59343
SCCO	2016	1.74575	0.13581	0.78000	0.04786	0.59343
SCCO	2017	0.81298	0.22865	0.53000	0.04786	0.59343
SKBM	2013	2.26063	0.18110	1.47000	0.01700	0.21700
SKBM	2014	3.08813	0.14960	1.04000	0.03110	0.20080
SKLT	2013	0.94928	0.10524	1.16000	0.00242	0.38722
SKLT	2014	1.16242	0.16765	1.16000	0.00242	0.38722
SKLT	2015	1.67772	0.17211	1.48000	0.00242	0.38722
SKLT	2016	1.55332	0.20074	1.30000	0.00242	0.38722

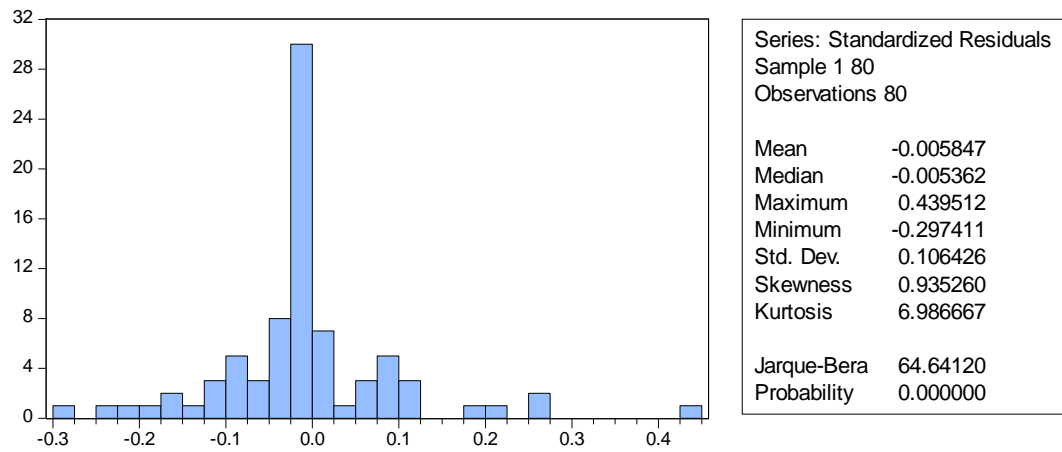
SMBR	2013	1.28748	0.25000	0.10000	0.00150	0.15790
SMGR	2014	3.07166	0.43358	0.37000	0.00004	0.09730
SMSM	2013	3.32794	0.25539	0.69000	0.08342	0.61110
SMSM	2014	4.25346	0.15745	0.53000	0.08342	0.61110
SMSM	2015	4.08671	0.12483	0.54000	0.08342	0.60005
SMSM	2016	3.62627	0.10034	0.38000	0.07996	0.68519
SMSM	2017	3.29695	0.12961	0.35000	0.07996	0.68519
TCID	2013	1.82520	0.46450	0.24000	0.14100	0.21200
TCID	2014	2.20880	0.44990	0.44000	0.14000	0.05230
TCID	2015	1.76977	0.15140	0.21000	0.14000	0.05720
TCID	2016	1.35158	0.50870	0.25000	0.14000	0.17000
TKIM	2013	0.76878	0.10917	2.26000	0.01078	0.60000
TKIM	2014	0.69014	0.11234	1.91000	0.01078	0.60000
TKIM	2015	0.67737	0.17657	1.81000	0.01078	0.60000
TKIM	2016	0.70698	0.08969	1.85000	0.00700	0.60000
TKIM	2017	0.87486	0.03691	1.57000	0.00700	0.60000
TRIS	2013	1.30286	0.20186	0.59000	0.01078	0.66957
TRIS	2014	1.11981	0.25052	0.69000	0.01078	0.66957
TRIS	2015	0.97303	0.26285	0.74000	0.01078	0.66957
TRIS	2016	0.99030	0.39387	0.64000	0.00700	0.66957
TRIS	2017	0.95365	0.36884	0.64000	0.00700	0.66957
ULTJ	2013	4.90614	0.10660	0.40000	0.14000	0.64350
UNIC	2013	0.64554	0.37900	0.85000	0.04000	0.68900
UNIC	2016	0.58763	0.91380	0.41000	0.08000	0.73910
UNVR	2013	27.71765	0.94016	2.14000	0.07000	0.13926
UNVR	2014	17.93550	0.94016	2.11000	0.06000	0.13926
UNVR	2015	18.64041	0.98833	2.26000	0.07500	0.13926

UNVR	2016	18.39789	0.95395	2.56000	0.08900	0.05314
UNVR	2017	23.28575	0.94768	2.65000	0.09800	0.05314
WIIM	2014	0.96964	0.49390	0.33000	0.24608	0.19034
WIIM	2015	0.95039	0.21627	0.42000	0.24608	0.19034

Lampiran 3 Statistik Deskriptif

	Q	DPR	DER	KM	KI
Mean	2.752642	0.360891	1.137875	0.050137	0.410217
Median	1.131520	0.250260	0.855000	0.010780	0.411830
Maximum	27.71765	2.241360	5.150000	0.277700	0.833460
Minimum	0.417060	0.022050	0.100000	0.000210	0.011600
Std. Dev.	4.975914	0.359567	1.081054	0.068301	0.257280
Skewness	3.646988	2.640660	2.100814	1.766024	-0.122506
Kurtosis	15.54713	12.19372	7.476577	5.601773	1.463833
Jarque-Bera	702.1086	374.7228	125.6447	64.14864	8.066128
Probability	0.000000	0.000000	0.000000	0.000000	0.017720
Sum	220.2113	28.87130	91.03000	4.010920	32.81737
Sum Sq. Dev.	1956.018	10.21376	92.32554	0.368537	5.229249
Observations	80	80	80	80	80

Lampiran 4 Uji Normalitas



Lampiran 5 Uji Heteroskedastisitas

Heteroskedasticity Test: White

F-statistic	1.133608	Prob. F(2,77)	0.3272
Obs*R-squared	2.288176	Prob. Chi-Square(2)	0.3185
Scaled explained SS	5.788758	Prob. Chi-Square(2)	0.0553

Lampiran 6 Uji Autokorelasi

Weighted Statistics			
R-squared	0.684297	Mean dependent var	2.665196
Adjusted R-squared	0.667460	S.D. dependent var	23.03052
S.E. of regression	0.109394	Akaike info criterion	-1.527259
Sum squared resid	0.897530	Schwarz criterion	-1.378382
Log likelihood	66.09034	Hannan-Quinn criter.	-1.467570
F-statistic	40.64130	Durbin-Watson stat	2.013067
Prob(F-statistic)	0.000000	Weighted mean dep.	2.638245

Lampiran 7 Uji Multikolonieritas

Variable	Coefficient Variance	Uncentered VIF	Centered VIF
C	0.563046	287065.9	NA
DPR	1.647365	30005.25	1.808246
DER	0.336161	126760.1	1.246260
KM	3.15E-05	437374.1	9.125274
KI	2.580913	653635.5	7.980430

Lampiran 8 Regresi Linear Berganda dan Hasil Uji t

Included observations: 80

Weighting series: KM

Weight type: Inverse standard deviation (EViews default scaling)

Variable	Coefficient	Std. Error	t-Statistic	Prob.
C	-3.700479	0.750364	-4.931581	0.0000
DPR	4.645463	1.283497	3.619379	0.0005
DER	6.269598	0.579794	10.81349	0.0000
KM	-0.010971	0.005613	-1.954417	0.0544
KI	2.666123	1.606522	1.659562	0.1012

Lampiran 9 Hasil Uji Simultan (Uji F)

Weighted Statistics			
R-squared	0.684297	Mean dependent var	2.665196
Adjusted R-squared	0.667460	S.D. dependent var	23.03052
S.E. of regression	0.109394	Akaike info criterion	-1.527259
Sum squared resid	0.897530	Schwarz criterion	-1.378382
Log likelihood	66.09034	Hannan-Quinn criter.	-1.467570
F-statistic	40.64130	Durbin-Watson stat	2.013067
Prob(F-statistic)	0.000000	Weighted mean dep.	2.638245

Lampiran 10 Hasil Koefisien Determinasi

Weighted Statistics			
R-squared	0.684297	Mean dependent var	2.665196
Adjusted R-squared	0.667460	S.D. dependent var	23.03052
S.E. of regression	0.109394	Akaike info criterion	-1.527259
Sum squared resid	0.897530	Schwarz criterion	-1.378382
Log likelihood	66.09034	Hannan-Quinn criter.	-1.467570
F-statistic	40.64130	Durbin-Watson stat	2.013067
Prob(F-statistic)	0.000000	Weighted mean dep.	2.638245
