

# LAMPIRAN

## LAMPIRAN 1: Daftar Perusahaan Manufaktur Sampel Penelitian

<b>NO</b>	<b>KODE PERUSAHAAN</b>	<b>NAMA PERUSAHAAN</b>
1	AKPI	ASTRA AGRO LESTARI TBK
2	ALDO	ALKINDO NURATAMA TBK
3	AMFG	ASAHIMAS FLAT GLASS TBK
4	ARNA	ARWANA CITRA MULIA TBK
5	ASII	ASTRA INTERNASIONAL TBK
6	AUTO	ASTRA AUTO PART TBK
7	BATA	SEPATU BATA TBK
8	BOLT	GARUDA METALINDO TBK
9	BRAM	INDO KORDSA TBK
10	BRNA	BERLINA TBK
11	CEKA	CAHAYA KALBAR TBK
12	CINT	CHITOSE INTERNASIONAL TBK
13	CPIN	CHAROEN POKPHAND INDONESIA TBK
14	CTBN	CITRA TURBINDO TBK
15	DLTA	DELTA DJAKARTA TBK
16	DPNS	DUTA PERTIWI NUSANTARA
17	DVLA	DARYA VARIA LABORATORIA TBK
18	EKAD	EKADHARMA INTERNASIONAL TBK
19	FASW	FAJAR SURYA WISESA TBK
20	GDYR	GOODYEAR INDONESIA TBK
21	GGRM	GUDANG GARANG TBK
22	GJTL	GAJAH TUNGGAL TBK
23	HMSP	HARLJAYA MANDALA SAMPOERNA TBK
24	ICBP	INDOFOOD CBP SUKSES MAKMUR TBK
25	IGAR	CHAMPION PASIFIC INDONESIA TBK
26	INAI	INDAL ALUMINIUM INDUSTRY TBK
27	INCI	INTAN WIJAYA INTERNASIONAL TBK
28	INDF	INDOFOOD SUKSES MAKMUR TBK
29	INDS	INDOSPRING TBK
30	INKP	INDAH KIAT PULP DAN PAPER TBK
31	INTP	INDOCEMENT TUNGGAL PRAKASA TBK
32	JECC	JEMBO CABLE COMPANY TBK
33	JPFA	JAPFA COMFEED INDONESIA TBK
34	KAEF	KIMIA FARMA TBK
35	KBLI	KMI WIRE AND CABLE TBK
36	KBLM	KABELINDO MURNI TBK
37	KIAS	KERAMIKA INDONESIA ASSOSIASI TBK
38	KLBF	KALBE FARMA TBK
39	LION	LION METAL WORKS TBK
40	LMSH	LIONMESH PRIMA TBK

41	MERK	MERCK TBK
42	MLBI	MULTI BINTANG INDONESIA TBK
43	MYOR	MAYORA INDAH TBK
44	PBRX	PAN BROTHERS TBK
45	PICO	PELANGI INDAH CANINDO TBK
46	RICY	RICKY PUTRA GOLBALINDO TBK
47	ROTI	NIPPON INDOSARO CORPORINDO TBK
48	SCCO	SUPREME CABLE MANUFACTURING AND COMMERCE TBK
49	SIDO	INDUSTRI JAMU DAN FARMASI SIDO MUNCUL TBK
50	SKBM	SEKAR BUMI TBK
51	SKLT	SEKAR LAUT TBK
52	SMBR	SEMEN BATURAJA TBK
53	SMCB	HOLCIM INDONESIA TBK
54	SMGR	SEMEN GRESIK TBK
55	SMSM	SELAMAT SEMPURNA TBK
56	SRIL	SRI REJEKI ISMAN TBK
57	TALF	TUNAS ALFIN TBK
58	TCID	MANDOM INDONESIA TBK
59	TKIM	PABRIK KERTAS TJIWI KIMIA TBK
60	TOTO	SURYA TOTO INDONESIA TBK
61	TPIA	CHANDRA ASRI PETROCHEMICAL TBK
62	TRIS	TRISULA INTERNASIONAL TBK
63	TRST	TRIA SENTOSA TBK
64	TSPC	TEMPO SCAN PACIFIC
65	TURI	TUNAS RIDEAN TBK
66	ULTJ	ULTRAJAYA MILK INDUSTRY ABD TRADING COMPANY TBK
67	UNIC	PELANGI INDAH CANINDO TBK
68	UNVR	UNILEVER INDONESIA TBK
69	VOKS	VOKSEL ELECTRIC TBK
70	WIIM	WISMILAK INTI MAKMUR TBK
71	WSBP	WASKITA BETON PRECAST TBK
72	WTON	WIJAYA KARYA BETON TBK

LAMPIRAN 2: Tabulasi Data Perhitungan Variabel Independen dan Dependen

NO	KODE PERUSAHAAN	TAHUN	DPR	ROA	CR	DER	GA
1	AKPI	2013	0.062	0.089	0.122	1.030	0.216
2	ALDO	2013	0.061	0.075	0.050	1.160	0.390
3	ALDO	2017	0.067	0.058	0.038	0.400	0.215
4	AMFG	2016	0.133	0.047	0.362	0.530	0.289
5	ARNA	2013	0.124	0.209	0.103	0.480	0.211
6	ARNA	2015	0.526	0.050	0.010	0.600	0.136
7	ARNA	2016	0.033	0.059	0.007	0.630	0.079
8	ASII	2013	0.260	0.111	0.261	1.020	0.174
9	ASII	2014	0.456	0.094	0.284	0.960	0.103
10	ASII	2015	0.495	0.064	0.355	0.940	0.040
11	ASII	2016	0.449	0.070	0.330	0.870	0.067
12	ASII	2017	0.118	0.078	0.320	1.170	0.129
13	AUTO	2013	0.505	0.087	0.554	0.320	0.421
14	AUTO	2014	0.531	0.067	0.331	0.420	0.140
15	BATA	2013	0.836	0.065	0.010	0.720	0.190
16	BATA	2014	0.400	0.091	0.013	0.810	0.138
17	BATA	2015	0.065	0.163	0.150	0.450	0.030
18	BATA	2016	0.732	0.053	0.028	0.440	0.012
19	BATA	2017	0.552	0.063	0.028	0.560	0.063
20	BOLT	2017	0.771	0.082	0.218	0.890	0.267
21	BRAM	2014	0.262	0.052	0.049	0.730	0.307
22	BRAM	2015	0.369	0.043	0.082	0.600	0.116
23	BRAM	2017	0.595	0.081	0.067	0.400	0.037
24	BRNA	2014	0.227	0.043	0.194	2.640	0.186
25	CEKA	2013	0.451	0.061	0.057	1.020	0.041
26	CINT	2015	0.281	0.077	1.079	0.210	0.049
27	CINT	2017	0.289	0.062	1.117	0.250	0.193
28	CPIN	2014	0.169	0.084	0.198	0.910	0.327
29	CPIN	2015	0.259	0.074	0.294	0.970	0.183
30	CPIN	2017	0.368	0.102	0.354	0.560	0.013
31	CTBN	2013	0.033	0.139	0.376	0.820	0.296
32	DLTA	2013	0.710	0.312	2.425	0.280	0.163
33	DLTA	2015	0.010	0.185	3.524	0.220	0.047
34	DLTA	2016	0.568	0.213	4.778	0.180	0.154
35	DLTA	2017	0.744	0.209	6.052	0.170	0.119
36	DPNS	2015	0.151	0.036	7.343	0.140	0.021
37	DPNS	2016	0.176	0.034	10.046	0.120	0.079
38	DVLA	2013	0.002	0.106	1.470	0.300	0.107
39	DVLA	2015	0.675	0.078	1.425	0.410	0.113

40	DVLA	2017	0.725	0.099	1.021	0.420	0.072
41	EKAD	2013	0.123	0.149	0.100	0.450	0.255
42	EKAD	2014	0.157	0.099	0.104	0.510	2.591
43	EKAD	2016	0.255	0.129	1.372	0.190	0.803
44	EKAD	2017	0.167	0.096	1.226	0.200	0.134
45	FASW	2016	0.557	0.091	0.139	1.720	0.227
46	FASW	2017	0.390	0.079	0.077	1.720	0.092
47	GDYR	2013	0.274	0.042	0.158	0.980	0.137
48	GGRM	2014	0.287	0.093	0.067	0.750	0.147
49	GGRM	2015	0.777	0.102	0.113	0.670	0.091
50	GGRM	2017	0.645	0.116	0.103	0.580	0.060
51	GJTL	2016	0.028	0.034	0.174	2.200	0.068
52	HMSP	2013	0.376	0.394	0.054	0.940	0.044
53	HMSP	2014	0.865	0.359	0.005	1.100	0.036
54	HMSP	2015	0.999	0.273	0.379	0.190	0.339
55	HMSP	2017	0.985	0.294	1.157	0.200	0.017
56	ICBP	2013	0.485	0.108	1.177	0.600	0.193
57	ICBP	2014	0.497	0.102	1.178	0.660	0.171
58	ICBP	2015	0.498	0.110	1.276	0.620	0.066
59	ICBP	2016	0.499	0.126	1.294	0.560	0.088
60	ICBP	2017	0.498	0.112	1.288	0.560	0.094
61	IGAR	2016	0.083	0.158	1.663	0.180	0.145
62	IGAR	2017	0.075	0.141	2.342	0.160	0.167
63	INAI	2015	0.886	0.022	0.107	4.550	0.483
64	INCI	2017	0.131	0.055	1.688	3.380	0.128
65	INDF	2013	0.242	0.066	0.702	0.280	0.315
66	INDF	2014	0.497	0.060	0.624	1.080	0.100
67	INDF	2015	0.497	0.040	0.521	1.130	0.069
68	INDF	2017	0.499	0.059	0.633	0.130	0.070
69	INDS	2013	0.128	0.187	1.142	1.040	0.319
70	INDS	2014	0.285	0.056	0.253	0.250	0.039
71	INKP	2015	0.042	0.032	0.113	1.680	0.272
72	INKP	2017	0.098	0.054	0.413	0.140	0.119
73	INTP	2013	0.635	0.196	4.597	0.250	0.169
74	INTP	2016	0.884	0.128	3.035	0.150	0.091
75	JECC	2016	0.685	0.083	0.162	2.370	0.168
76	JECC	2017	0.726	0.043	0.050	0.180	0.215
77	JPFA	2015	0.342	0.031	0.168	1.810	0.091
78	JPFA	2017	0.572	0.053	0.344	2.520	0.095
79	KAEF	2016	0.200	0.059	0.382	1.030	0.425
80	KAEF	2017	0.300	0.054	0.418	1.150	0.322
81	KBLI	2015	0.243	0.074	0.062	0.510	0.160

82	KBLI	2016	0.240	0.179	0.431	0.420	0.206
83	KBLI	2017	0.089	0.119	0.155	1.370	0.610
84	KBLM	2015	0.263	0.020	0.020	1.210	0.010
85	KBLM	2017	0.254	0.036	0.292	0.690	0.933
86	KIAS	2014	0.264	0.039	1.559	0.110	0.036
87	KLBF	2013	0.398	0.177	0.540	1.840	0.201
88	KLBF	2014	0.431	0.171	0.794	0.270	0.098
89	KLBF	2015	0.444	0.150	1.149	0.250	0.102
90	KLBF	2016	0.448	0.154	1.250	0.220	0.112
91	KLBF	2017	0.488	0.148	1.250	0.580	0.091
92	LION	2013	0.321	0.130	3.198	0.330	0.150
93	LION	2015	0.045	0.072	1.514	0.410	0.065
94	LMSH	2013	0.134	0.102	1.491	0.200	0.102
95	MERK	2013	0.001	0.252	1.246	0.360	0.224
96	MERK	2014	0.802	0.253	1.983	0.290	0.159
97	MERK	2017	0.790	0.174	0.321	0.370	0.139
98	MLBI	2013	0.814	0.669	0.201	0.800	0.547
99	MYOR	2015	0.220	0.110	0.534	1.480	0.102
100	MYOR	2016	0.347	0.108	0.397	1.060	0.139
101	MYOR	2017	0.379	0.109	0.492	1.030	0.154
102	PBRX	2015	0.094	0.020	0.853	0.110	0.424
103	PBRX	2016	0.132	0.026	0.762	1.280	0.075
104	PICO	2017	0.068	0.023	0.038	1.580	0.189
105	RICY	2016	0.168	0.011	0.076	2.120	0.076
106	RICY	2017	0.153	0.012	0.088	2.190	0.067
107	ROTI	2013	0.020	0.087	0.316	1.320	0.513
108	ROTI	2016	0.248	0.096	1.906	1.020	0.079
109	ROTI	2017	0.202	0.030	1.845	0.620	0.562
110	SCCO	2013	0.295	0.060	0.282	1.490	0.185
111	SCCO	2015	0.291	0.090	0.415	0.390	0.071
112	SCCO	2016	0.181	0.139	0.808	1.010	0.382
113	SCCO	2017	0.267	0.067	0.624	0.470	0.639
114	SIDO	2016	0.812	0.161	4.623	0.080	0.068
115	SIDO	2017	0.815	0.169	4.330	0.090	0.057
116	SKBM	2014	0.150	0.137	0.487	1.040	0.305
117	SKLT	2015	0.203	0.053	0.048	1.830	0.137
118	SKLT	2016	0.167	0.036	0.075	0.920	0.507
119	SKLT	2017	0.209	0.036	0.062	1.070	0.120
120	SMBR	2013	0.250	0.115	9.827	0.100	1.262
121	SMBR	2014	0.250	0.112	11.427	0.080	0.079
122	SMBR	2015	0.250	0.108	4.888	0.240	0.117
123	SMBR	2016	0.250	0.059	1.153	0.400	0.337

124	SMBR	2017	0.250	0.029	0.727	0.480	0.158
125	SMCB	2013	0.404	0.068	0.115	0.700	0.224
126	SMCB	2014	0.390	0.039	0.056	0.960	0.154
127	SMGR	2013	0.491	0.160	0.768	0.410	0.159
128	SMGR	2014	0.400	0.162	0.934	0.370	0.114
129	SMGR	2015	0.400	0.119	0.601	1.740	0.112
130	SMSM	2014	0.427	0.241	0.141	0.530	0.028
131	SMSM	2015	0.623	0.208	0.215	1.810	0.269
132	SMSM	2016	0.207	0.223	0.190	0.430	0.016
133	SRIL	2013	0.120	0.055	0.033	1.410	0.307
134	SRIL	2015	0.068	0.071	1.149	1.180	0.321
135	SRIL	2017	0.136	0.043	0.726	1.680	0.270
136	TALF	2015	0.120	0.078	1.507	1.050	0.006
137	TALF	2016	0.135	0.034	0.663	0.170	1.031
138	TALF	2017	0.189	0.023	0.294	0.200	0.045
139	TCID	2013	0.463	0.110	0.363	0.240	0.162
140	TCID	2014	0.450	0.094	0.196	0.440	0.264
141	TCID	2015	0.151	0.262	0.985	0.640	0.123
142	TCID	2016	0.509	0.074	1.337	0.230	0.049
143	TKIM	2013	0.105	0.010	0.224	2.260	0.232
144	TKIM	2017	0.252	0.011	0.255	1.590	0.045
145	TOTO	2013	0.209	0.136	0.509	0.690	0.147
146	TOTO	2014	0.287	0.145	0.159	0.650	0.161
147	TOTO	2015	0.434	0.117	0.298	0.720	0.203
148	TOTO	2016	0.796	0.065	0.252	0.690	0.058
149	TOTO	2017	0.481	0.099	0.253	0.670	0.095
150	TPIA	2017	0.168	0.025	1.435	0.700	0.415
151	TRIS	2013	0.198	0.107	0.415	0.590	0.226
152	TRIS	2014	0.406	0.069	0.125	0.690	0.167
153	TRIS	2015	0.371	0.065	0.289	0.450	0.096
154	TRIS	2016	0.791	0.039	0.314	0.850	0.114
155	TRST	2014	0.467	0.009	0.107	0.850	0.000
156	TRST	2015	0.555	0.008	0.085	0.830	0.029
157	TSPC	2015	0.431	0.084	1.023	2.260	0.124
158	TSPC	2017	0.331	0.075	0.985	0.460	0.129
159	TURI	2014	0.400	0.089	0.139	0.740	0.046
160	TURI	2015	0.383	0.067	0.159	0.970	0.101
161	TURI	2016	0.383	0.067	0.159	0.830	0.101
162	ULTJ	2016	0.107	0.167	2.563	0.210	0.198
163	ULTJ	2017	0.164	0.137	2.584	0.230	0.224
164	UNIC	2013	0.452	0.027	0.129	0.850	0.376
165	UNVR	2013	0.529	0.401	0.031	2.120	0.114

166	UNVR	2014	0.447	0.402	0.097	2.110	0.908
167	UNVR	2015	0.446	0.372	0.062	1.990	0.203
168	VOKS	2016	0.104	0.096	0.078	1.490	0.128
169	WIIM	2013	0.300	0.108	0.369	0.570	0.018
170	WSBP	2017	0.807	0.047	0.135	1.030	0.086
171	WTON	2015	0.314	0.039	0.459	0.920	0.172
172	WTON	2017	0.314	0.048	0.151	1.570	0.516



LAMPIRAN 3: Data Perhitungan DPR (ICMD)

NO	KODE PERUSAHAAN	TAHUN	DPR (%)	:100	DPR (X)
1	AKPI	2013	6.21	100	0.062
2	ALDO	2013	6.07	100	0.061
3	ALDO	2017	6.68	100	0.067
4	AMFG	2016	13.33	100	0.133
5	ARNA	2013	12.35	100	0.124
6	ARNA	2015	52.6	100	0.526
7	ARNA	2016	3.25	100	0.033
8	ASII	2013	25.95	100	0.260
9	ASII	2014	45.59	100	0.456
10	ASII	2015	49.54	100	0.495
11	ASII	2016	44.87	100	0.449
12	ASII	2017	11.79	100	0.118
13	AUTO	2013	50.53	100	0.505
14	AUTO	2014	53.08	100	0.531
15	BATA	2013	83.64	100	0.836
16	BATA	2014	40	100	0.400
17	BATA	2015	6.47	100	0.065
18	BATA	2016	73.17	100	0.732
19	BATA	2017	55.19	100	0.552
20	BOLT	2017	77.1	100	0.771
21	BRAM	2014	26.23	100	0.262
22	BRAM	2015	36.86	100	0.369
23	BRAM	2017	59.51	100	0.595
24	BRNA	2014	22.68	100	0.227
25	CEKA	2013	45.06	100	0.451
26	CINT	2015	28.11	100	0.281
27	CINT	2017	28.92	100	0.289
28	CPIN	2014	16.9	100	0.169
29	CPIN	2015	25.89	100	0.259
30	CPIN	2017	36.76	100	0.368
31	CTBN	2013	3.25	100	0.033
32	DLTA	2013	71.04	100	0.710
33	DLTA	2015	1.01	100	0.010
34	DLTA	2016	56.8	100	0.568
35	DLTA	2017	74.41	100	0.744
36	DPNS	2015	15.11	100	0.151
37	DPNS	2016	17.6	100	0.176
38	DVLA	2013	0.2	100	0.002
39	DVLA	2015	67.47	100	0.675

40	DVLA	2017	72.48	100	0.725
41	EKAD	2013	12.25	100	0.123
42	EKAD	2014	15.71	100	0.157
43	EKAD	2016	25.46	100	0.255
44	EKAD	2017	16.69	100	0.167
45	FASW	2016	55.74	100	0.557
46	FASW	2017	38.99	100	0.390
47	GDYR	2013	27.43	100	0.274
48	GGRM	2014	28.67	100	0.287
49	GGRM	2015	77.73	100	0.777
50	GGRM	2017	64.52	100	0.645
51	GJTL	2016	2.78	100	0.028
52	HMSP	2013	37.59	100	0.376
53	HMSP	2014	86.45	100	0.865
54	HMSP	2015	99.89	100	0.999
55	HMSP	2017	98.5	100	0.985
56	ICBP	2013	48.45	100	0.485
57	ICBP	2014	49.71	100	0.497
58	ICBP	2015	49.75	100	0.498
59	ICBP	2016	49.88	100	0.499
60	ICBP	2017	49.76	100	0.498
61	IGAR	2016	8.31	100	0.083
62	IGAR	2017	7.48	100	0.075
63	INAI	2015	88.57	100	0.886
64	INCI	2017	13.1	100	0.131
65	INDF	2013	24.16	100	0.242
66	INDF	2014	49.72	100	0.497
67	INDF	2015	49.7	100	0.497
68	INDF	2017	49.92	100	0.499
69	INDS	2013	12.76	100	0.128
70	INDS	2014	28.49	100	0.285
71	INKP	2015	4.19	100	0.042
72	INKP	2017	9.77	100	0.098
73	INTP	2013	63.49	100	0.635
74	INTP	2016	88.36	100	0.884
75	JECC	2016	68.51	100	0.685
76	JECC	2017	72.56	100	0.726
77	JPFA	2015	34.15	100	0.342
78	JPFA	2017	57.2	100	0.572
79	KAEF	2016	20	100	0.200
80	KAEF	2017	30.01	100	0.300
81	KBLI	2015	24.31	100	0.243

82	KBLI	2016	23.97	100	0.240
83	KBLI	2017	8.87	100	0.089
84	KBLM	2015	26.29	100	0.263
85	KBLM	2017	25.44	100	0.254
86	KIAS	2014	26.42	100	0.264
87	KLBF	2013	39.76	100	0.398
88	KLBF	2014	43.14	100	0.431
89	KLBF	2015	44.44	100	0.444
90	KLBF	2016	44.84	100	0.448
91	KLBF	2017	48.75	100	0.488
92	LION	2013	32.13	100	0.321
93	LION	2015	4.52	100	0.045
94	LMSH	2013	13.35	100	0.134
95	MERK	2013	0.08	100	0.001
96	MERK	2014	80.23	100	0.802
97	MERK	2017	79.03	100	0.790
98	MLBI	2013	81.42	100	0.814
99	MYOR	2015	21.99	100	0.220
100	MYOR	2016	34.65	100	0.347
101	MYOR	2017	37.86	100	0.379
102	PBRX	2015	9.42	100	0.094
103	PBRX	2016	13.23	100	0.132
104	PICO	2017	6.76	100	0.068
105	RICY	2016	16.78	100	0.168
106	RICY	2017	15.32	100	0.153
107	ROTI	2013	2	100	0.020
108	ROTI	2016	24.82	100	0.248
109	ROTI	2017	20.18	100	0.202
110	SCCO	2013	29.47	100	0.295
111	SCCO	2015	29.11	100	0.291
112	SCCO	2016	18.11	100	0.181
113	SCCO	2017	26.72	100	0.267
114	SIDO	2016	81.16	100	0.812
115	SIDO	2017	81.49	100	0.815
116	SKBM	2014	14.96	100	0.150
117	SKLT	2015	20.3	100	0.203
118	SKLT	2016	16.74	100	0.167
119	SKLT	2017	20.93	100	0.209
120	SMBR	2013	24.99	100	0.250
121	SMBR	2014	25	100	0.250
122	SMBR	2015	25	100	0.250
123	SMBR	2016	25	100	0.250

124	SMBR	2017	25	100	0.250
125	SMCB	2013	40.36	100	0.404
126	SMCB	2014	38.98	100	0.390
127	SMGR	2013	49.05	100	0.491
128	SMGR	2014	40	100	0.400
129	SMGR	2015	40	100	0.400
130	SMSM	2014	42.7	100	0.427
131	SMSM	2015	62.28	100	0.623
132	SMSM	2016	20.66	100	0.207
133	SRIL	2013	12.01	100	0.120
134	SRIL	2015	6.84	100	0.068
135	SRIL	2017	13.63	100	0.136
136	TALF	2015	12.04	100	0.120
137	TALF	2016	13.47	100	0.135
138	TALF	2017	18.92	100	0.189
139	TCID	2013	46.33	100	0.463
140	TCID	2014	44.99	100	0.450
141	TCID	2015	15.14	100	0.151
142	TCID	2016	50.87	100	0.509
143	TKIM	2013	10.49	100	0.105
144	TKIM	2017	25.24	100	0.252
145	TOTO	2013	20.94	100	0.209
146	TOTO	2014	28.66	100	0.287
147	TOTO	2015	43.42	100	0.434
148	TOTO	2016	79.59	100	0.796
149	TOTO	2017	48.1	100	0.481
150	TPIA	2017	16.78	100	0.168
151	TRIS	2013	19.76	100	0.198
152	TRIS	2014	40.59	100	0.406
153	TRIS	2015	37.13	100	0.371
154	TRIS	2016	79.14	100	0.791
155	TRST	2014	46.67	100	0.467
156	TRST	2015	55.46	100	0.555
157	TSPC	2015	43.11	100	0.431
158	TSPC	2017	33.1	100	0.331
159	TURI	2014	39.98	100	0.400
160	TURI	2015	38.33	100	0.383
161	TURI	2016	38.33	100	0.383
162	ULTJ	2016	10.69	100	0.107
163	ULTJ	2017	16.43	100	0.164
164	UNIC	2013	45.15	100	0.452
165	UNVR	2013	52.88	100	0.529

166	UNVR	2014	44.67	100	0.447
167	UNVR	2015	44.59	100	0.446
168	VOKS	2016	10.39	100	0.104
169	WIIM	2013	29.98	100	0.300
170	WSBP	2017	80.65	100	0.807
171	WTON	2015	31.38	100	0.314
172	WTON	2017	31.36	100	0.314

LAMPIRAN 4: Data Perhitungan ROA (ICMD)

NO	KODE PERUSAHAAN	TAHUN	ROA (%)	:100	ROA (X)
1	AKPI	2013	8.93	100	0.089
2	ALDO	2013	7.49	100	0.075
3	ALDO	2017	5.82	100	0.058
4	AMFG	2016	4.73	100	0.047
5	ARNA	2013	20.94	100	0.209
6	ARNA	2015	4.98	100	0.050
7	ARNA	2016	5.92	100	0.059
8	ASII	2013	11.08	100	0.111
9	ASII	2014	9.37	100	0.094
10	ASII	2015	6.36	100	0.064
11	ASII	2016	6.99	100	0.070
12	ASII	2017	7.84	100	0.078
13	AUTO	2013	8.72	100	0.087
14	AUTO	2014	6.65	100	0.067
15	BATA	2013	6.52	100	0.065
16	BATA	2014	9.13	100	0.091
17	BATA	2015	16.29	100	0.163
18	BATA	2016	5.25	100	0.053
19	BATA	2017	6.27	100	0.063
20	BOLT	2017	8.18	100	0.082
21	BRAM	2014	5.15	100	0.052
22	BRAM	2015	4.31	100	0.043
23	BRAM	2017	8.07	100	0.081
24	BRNA	2014	4.27	100	0.043
25	CEKA	2013	6.06	100	0.061
26	CINT	2015	7.7	100	0.077
27	CINT	2017	6.22	100	0.062
28	CPIN	2014	8.37	100	0.084
29	CPIN	2015	7.42	100	0.074
30	CPIN	2017	10.18	100	0.102
31	CTBN	2013	13.92	100	0.139
32	DLTA	2013	31.2	100	0.312
33	DLTA	2015	18.5	100	0.185
34	DLTA	2016	21.25	100	0.213
35	DLTA	2017	20.87	100	0.209
36	DPNS	2015	3.59	100	0.036
37	DPNS	2016	3.38	100	0.034
38	DVLA	2013	10.57	100	0.106
39	DVLA	2015	7.84	100	0.078

40	DVLA	2017	9.89	100	0.099
41	EKAD	2013	14.94	100	0.149
42	EKAD	2014	9.91	100	0.099
43	EKAD	2016	12.91	100	0.129
44	EKAD	2017	9.56	100	0.096
45	FASW	2016	9.06	100	0.091
46	FASW	2017	7.94	100	0.079
47	GDYR	2013	4.17	100	0.042
48	GGRM	2014	9.27	100	0.093
49	GGRM	2015	10.16	100	0.102
50	GGRM	2017	11.62	100	0.116
51	GJTL	2016	3.35	100	0.034
52	HMSP	2013	39.44	100	0.394
53	HMSP	2014	35.87	100	0.359
54	HMSP	2015	27.26	100	0.273
55	HMSP	2017	29.37	100	0.294
56	ICBP	2013	10.75	100	0.108
57	ICBP	2014	10.16	100	0.102
58	ICBP	2015	11.01	100	0.110
59	ICBP	2016	12.56	100	0.126
60	ICBP	2017	11.21	100	0.112
61	IGAR	2016	15.77	100	0.158
62	IGAR	2017	14.11	100	0.141
63	INAI	2015	2.15	100	0.022
64	INCI	2017	5.45	100	0.055
65	INDF	2013	6.61	100	0.066
66	INDF	2014	5.99	100	0.060
67	INDF	2015	4.04	100	0.040
68	INDF	2017	5.85	100	0.059
69	INDS	2013	18.72	100	0.187
70	INDS	2014	5.59	100	0.056
71	INKP	2015	3.16	100	0.032
72	INKP	2017	5.41	100	0.054
73	INTP	2013	19.61	100	0.196
74	INTP	2016	12.84	100	0.128
75	JECC	2016	8.34	100	0.083
76	JECC	2017	4.32	100	0.043
77	JPFA	2015	3.06	100	0.031
78	JPFA	2017	5.25	100	0.053
79	KAEF	2016	5.89	100	0.059
80	KAEF	2017	5.44	100	0.054
81	KBLI	2015	7.43	100	0.074

82	KBLI	2016	17.87	100	0.179
83	KBLI	2017	11.91	100	0.119
84	KBLM	2015	1.95	100	0.020
85	KBLM	2017	3.56	100	0.036
86	KIAS	2014	3.92	100	0.039
87	KLBF	2013	17.71	100	0.177
88	KLBF	2014	17.07	100	0.171
89	KLBF	2015	15.02	100	0.150
90	KLBF	2016	15.44	100	0.154
91	KLBF	2017	14.76	100	0.148
92	LION	2013	12.99	100	0.130
93	LION	2015	7.2	100	0.072
94	LMSH	2013	10.15	100	0.102
95	MERK	2013	25.17	100	0.252
96	MERK	2014	25.32	100	0.253
97	MERK	2017	17.4	100	0.174
98	MLBI	2013	66.91	100	0.669
99	MYOR	2015	11.02	100	0.110
100	MYOR	2016	10.75	100	0.108
101	MYOR	2017	10.93	100	0.109
102	PBRX	2015	1.95	100	0.020
103	PBRX	2016	2.56	100	0.026
104	PICO	2017	2.34	100	0.023
105	RICY	2016	1.09	100	0.011
106	RICY	2017	1.2	100	0.012
107	ROTI	2013	8.67	100	0.087
108	ROTI	2016	9.58	100	0.096
109	ROTI	2017	2.97	100	0.030
110	SCCO	2013	5.96	100	0.060
111	SCCO	2015	8.97	100	0.090
112	SCCO	2016	13.9	100	0.139
113	SCCO	2017	6.72	100	0.067
114	SIDO	2016	16.08	100	0.161
115	SIDO	2017	16.9	100	0.169
116	SKBM	2014	13.72	100	0.137
117	SKLT	2015	5.32	100	0.053
118	SKLT	2016	3.63	100	0.036
119	SKLT	2017	3.61	100	0.036
120	SMBR	2013	11.51	100	0.115
121	SMBR	2014	11.22	100	0.112
122	SMBR	2015	10.84	100	0.108
123	SMBR	2016	5.93	100	0.059



124	SMBR	2017	2.9	100	0.029
125	SMCB	2013	6.76	100	0.068
126	SMCB	2014	3.89	100	0.039
127	SMGR	2013	16	100	0.160
128	SMGR	2014	16.24	100	0.162
129	SMGR	2015	11.86	100	0.119
130	SMSM	2014	24.09	100	0.241
131	SMSM	2015	20.78	100	0.208
132	SMSM	2016	22.27	100	0.223
133	SRIL	2013	5.54	100	0.055
134	SRIL	2015	7.11	100	0.071
135	SRIL	2017	4.33	100	0.043
136	TALF	2015	7.77	100	0.078
137	TALF	2016	3.42	100	0.034
138	TALF	2017	2.33	100	0.023
139	TCID	2013	10.95	100	0.110
140	TCID	2014	9.41	100	0.094
141	TCID	2015	26.15	100	0.262
142	TCID	2016	7.42	100	0.074
143	TKIM	2013	1.04	100	0.010
144	TKIM	2017	1.06	100	0.011
145	TOTO	2013	13.55	100	0.136
146	TOTO	2014	14.49	100	0.145
147	TOTO	2015	11.69	100	0.117
148	TOTO	2016	6.53	100	0.065
149	TOTO	2017	9.87	100	0.099
150	TPIA	2017	2.48	100	0.025
151	TRIS	2013	10.73	100	0.107
152	TRIS	2014	6.86	100	0.069
153	TRIS	2015	6.52	100	0.065
154	TRIS	2016	3.94	100	0.039
155	TRST	2014	0.92	100	0.009
156	TRST	2015	0.55	100	0.055
157	TSPC	2015	8.42	100	0.084
158	TSPC	2017	7.5	100	0.075
159	TURI	2014	8.88	100	0.089
160	TURI	2015	6.7	100	0.067
161	TURI	2016	6.7	100	0.067
162	ULTJ	2016	16.74	100	0.167
163	ULTJ	2017	13.72	100	0.137
164	UNIC	2013	2.67	100	0.027
165	UNVR	2013	40.1	100	0.401

166	UNVR	2014	40.18	100	0.402
167	UNVR	2015	37.2	100	0.372
168	VOKS	2016	9.59	100	0.096
169	WIIM	2013	10.77	100	0.108
170	WSBP	2017	4.7	100	0.047
171	WTON	2015	3.86	100	0.039
172	WTON	2017	4.82	100	0.048

## LAMPIRAN 5: Data Perhitungan Likuiditas (Cash Ratio)

$$\text{Rumus : } \textit{Cash Ratio} = \frac{\textit{Kas dan Setara Kas}}{\textit{Utang Lancar}}$$

NO	KODE PERUSAHAAN	TAHUN	CASH AND CASH EQUIVALENT	CURRENT LIABILITIES	CASH RATIO
1	AKPI	2013	Rp 84,559	Rp 694,269	0.122
2	ALDO	2013	Rp 7,467	Rp 150,483	0.050
3	ALDO	2017	Rp 9,115	Rp 242,051	0.038
4	AMFG	2016	Rp 1,107,411	Rp 2,263,728	0.489
5	ARNA	2013	Rp 32,140	Rp 311,781	0.103
6	ARNA	2015	Rp 5,105	Rp 498,858	0.010
7	ARNA	2016	Rp 3,165	Rp 642,892	0.005
8	ASII	2013	Rp 18,557,000	Rp 71,139,000	0.261
9	ASII	2014	Rp 20,902,000	Rp 97,241,000	0.215
10	ASII	2015	Rp 27,102,000	Rp 76,242,000	0.355
11	ASII	2016	Rp 29,357,000	Rp 110,403,000	0.266
12	ASII	2017	Rp 31,574,000	Rp 98,722,000	0.320
13	AUTO	2013	Rp 1,473,625	Rp 2,661,312	0.554
14	AUTO	2014	Rp 1,275,050	Rp 5,138,080	0.248
15	BATA	2013	Rp 3,287	Rp 257,338	0.013
16	BATA	2014	Rp 4,036	Rp 490,876	0.008
17	BATA	2015	Rp 32,367	Rp 210,932	0.153
18	BATA	2016	Rp 5,738	Rp 533,900	0.011
19	BATA	2017	Rp 6,391	Rp 230,498	0.028
20	BOLT	2017	Rp 37,655	Rp 172,769	0.218
21	BRAM	2014	Rp 47,395	Rp 1,360,531	0.035
22	BRAM	2015	Rp 67,777	Rp 828,382	0.082
23	BRAM	2017	Rp 44,551	Rp 660,950	0.067
24	BRNA	2014	Rp 107,952	Rp 581,020	0.186
25	CEKA	2013	Rp 29,613	Rp 518,962	0.057
26	CINT	2015	Rp 63,510	Rp 58,866	1.079
27	CINT	2017	Rp 73,754	Rp 66,015	1.117
28	CPIN	2014	Rp 884,831	Rp 10,009,670	0.088
29	CPIN	2015	Rp 1,679,273	Rp 5,703,842	0.294
30	CPIN	2017	Rp 1,793,454	Rp 5,059,552	0.354
31	CTBN	2013	Rp 511,273	Rp 1,360,425	0.376
32	DLTA	2013	Rp 290,769	Rp 119,920	2.425
33	DLTA	2015	Rp 494,886	Rp 140,419	3.524
34	DLTA	2016	Rp 658,666	Rp 1,048,134	0.628
35	DLTA	2017	Rp 845,324	Rp 139,685	6.052
36	DPNS	2015	Rp 101,815	Rp 13,865	7.343
37	DPNS	2016	Rp 115,866	Rp 174,907	0.662

38	DVLA	2013	Rp 316,701	Rp 215,473	1.470
39	DVLA	2015	Rp 422,259	Rp 296,298	1.425
40	DVLA	2017	Rp 450,882	Rp 441,623	1.021
41	EKAD	2013	Rp 9,841	Rp 98,355	0.100
42	EKAD	2014	Rp 13,223	Rp 296,439	0.045
43	EKAD	2016	Rp 94,850	Rp 337,644	0.281
44	EKAD	2017	Rp 112,224	Rp 91,525	1.226
45	FASW	2016	Rp 223,740	Rp 2,167,096	0.103
46	FASW	2017	Rp 287,858	Rp 3,753,070	0.077
47	GDYR	2013	Rp 103,301	Rp 652,499	0.158
48	GGRM	2014	Rp 1,588,110	Rp 38,532,600	0.041
49	GGRM	2015	Rp 2,725,891	Rp 24,045,086	0.113
50	GGRM	2017	Rp 2,329,179	Rp 22,611,042	0.103
51	GJTL	2016	Rp 755,545	Rp 7,517,152	0.101
52	HMSP	2013	Rp 657,276	Rp 12,123,790	0.054
53	HMSP	2014	Rp 65,086	Rp 20,777,514	0.003
54	HMSP	2015	Rp 1,718,738	Rp 4,538,674	0.379
55	HMSP	2017	Rp 7,501,737	Rp 6,482,969	1.157
56	ICBP	2013	Rp 5,526,173	Rp 4,696,583	1.177
57	ICBP	2014	Rp 7,342,986	Rp 13,603,527	0.540
58	ICBP	2015	Rp 7,657,510	Rp 6,002,344	1.276
59	ICBP	2016	Rp 8,371,980	Rp 15,571,362	0.538
60	ICBP	2017	Rp 8,796,690	Rp 6,827,588	1.288
61	IGAR	2016	Rp 103,660	Rp 363,004	0.286
62	IGAR	2017	Rp 142,748	Rp 60,941	2.342
63	INAI	2015	Rp 101,855	Rp 952,130	0.107
64	INCI	2017	Rp 48,156	Rp 28,528	1.688
65	INDF	2013	Rp 13,666,194	Rp 19,471,799	0.702
66	INDF	2014	Rp 14,157,619	Rp 40,995,736	0.345
67	INDF	2015	Rp 13,076,076	Rp 25,107,538	0.521
68	INDF	2017	Rp 13,689,998	Rp 21,637,763	0.633
69	INDS	2013	Rp 321,719	Rp 81,916	3.927
70	INDS	2014	Rp 84,727	Rp 975,954	0.087
71	INKP	2015	Rp 2,448,452	Rp 21,688,344	0.113
72	INKP	2017	Rp 8,401,155	Rp 20,361,696	0.413
73	INTP	2013	Rp 12,595,187	Rp 2,740,089	4.597
74	INTP	2016	Rp 9,674,030	Rp 14,424,622	0.671
75	JECC	2016	Rp 160,863	Rp 1,131,735	0.142
76	JECC	2017	Rp 61,241	Rp 1,220,227	0.050
77	JPFA	2015	Rp 901,207	Rp 5,352,670	0.168
78	JPFA	2017	Rp 1,642,106	Rp 4,769,640	0.344
79	KAEF	2016	Rp 647,684	Rp 2,906,737	0.223

80	KAEF	2017	Rp 989,637	Rp 2,369,507	0.418
81	KBLI	2015	Rp 20,884	Rp 337,674	0.062
82	KBLI	2016	Rp 154,624	Rp 1,223,453	0.126
83	KBLI	2017	Rp 144,308	Rp 933,490	0.155
84	KBLM	2015	Rp 6,748	Rp 342,644	0.020
85	KBLM	2017	Rp 126,807	Rp 434,423	0.292
86	KIAS	2014	Rp 220,527	Rp 793,535	0.278
87	KLBF	2013	Rp 1,425,461	Rp 2,640,590	0.540
88	KLBF	2014	Rp 1,894,610	Rp 8,120,805	0.233
89	KLBF	2015	Rp 2,718,619	Rp 2,365,880	1.149
90	KLBF	2016	Rp 2,895,582	Rp 9,572,530	0.302
91	KLBF	2017	Rp 2,784,706	Rp 2,227,336	1.250
92	LION	2013	Rp 203,833	Rp 63,729	3.198
93	LION	2015	Rp 202,395	Rp 133,694	1.514
94	LMSH	2013	Rp 41,044	Rp 27,519	1.491
95	MERK	2013	Rp 184,227	Rp 147,818	1.246
96	MERK	2014	Rp 257,412	Rp 595,339	0.432
97	MERK	2017	Rp 59,465	Rp 184,971	0.321
98	MLBI	2013	Rp 145,511	Rp 722,542	0.201
99	MYOR	2015	Rp 1,682,075	Rp 3,151,495	0.534
100	MYOR	2016	Rp 1,543,129	Rp 8,739,783	0.177
101	MYOR	2017	Rp 2,201,859	Rp 4,473,628	0.492
102	PBRX	2015	Rp 1,078,930	Rp 1,264,920	0.853
103	PBRX	2016	Rp 1,052,756	Rp 5,193,968	0.203
104	PICO	2017	Rp 12,317	Rp 323,802	0.038
105	RICY	2016	Rp 62,293	Rp 943,937	0.066
106	RICY	2017	Rp 77,252	Rp 873,225	0.088
107	ROTI	2013	Rp 101,142	Rp 320,197	0.316
108	ROTI	2016	Rp 610,989	Rp 949,414	0.644
109	ROTI	2017	Rp 1,895,070	Rp 1,027,177	1.845
110	SCCO	2013	Rp 294,288	Rp 1,043,363	0.282
111	SCCO	2015	Rp 340,056	Rp 819,138	0.415
112	SCCO	2016	Rp 965,367	Rp 2,019,189	0.478
113	SCCO	2017	Rp 777,825	Rp 1,246,237	0.624
114	SIDO	2016	Rp 997,135	Rp 1,794,125	0.556
115	SIDO	2017	Rp 902,852	Rp 208,507	4.330
116	SKBM	2014	Rp 125,051	Rp 379,497	0.330
117	SKLT	2015	Rp 7,681	Rp 159,133	0.048
118	SKLT	2016	Rp 12,779	Rp 222,687	0.057
119	SKLT	2017	Rp 13,138	Rp 211,493	0.062
120	SMBR	2013	Rp 1,882,848	Rp 193,631	9.724
121	SMBR	2014	Rp 2,053,924	Rp 179,749	11.427

122	SMBR	2015	Rp 1,251,360	Rp 255,995	4.888
123	SMBR	2016	Rp 336,979	Rp 838,232	0.402
124	SMBR	2017	Rp 486,386	Rp 668,828	0.727
125	SMCB	2013	Rp 375,565	Rp 3,262,054	0.115
126	SMCB	2014	Rp 214,570	Rp 2,290,969	0.094
127	SMGR	2013	Rp 4,070,493	Rp 5,297,631	0.768
128	SMGR	2014	Rp 4,925,950	Rp 11,648,545	0.423
129	SMGR	2015	Rp 3,964,018	Rp 6,599,190	0.601
130	SMSM	2014	Rp 75,860	Rp 1,133,730	0.067
131	SMSM	2015	Rp 122,963	Rp 571,712	0.215
132	SMSM	2016	Rp 96,510	Rp 1,454,387	0.066
133	SRIL	2013	Rp 74,440	Rp 2,232,337	0.033
134	SRIL	2015	Rp 1,130,591	Rp 984,296	1.149
135	SRIL	2017	Rp 1,723,740	Rp 2,373,446	0.726
136	TALF	2015	Rp 105,440	Rp 69,981	1.507
137	TALF	2016	Rp 73,781	Rp 325,494	0.227
138	TALF	2017	Rp 37,580	Rp 127,673	0.294
139	TCID	2013	Rp 73,825	Rp 203,321	0.363
140	TCID	2014	Rp 95,091	Rp 874,017	0.109
141	TCID	2015	Rp 219,670	Rp 222,931	0.985
142	TCID	2016	Rp 298,564	Rp 1,174,482	0.254
143	TKIM	2013	Rp 1,415,001	Rp 6,325,099	0.224
144	TKIM	2017	Rp 1,691,251	Rp 6,643,912	0.255
145	TOTO	2013	Rp 252,491	Rp 496,495	0.509
146	TOTO	2014	Rp 84,043	Rp 1,115,004	0.075
147	TOTO	2015	Rp 167,008	Rp 560,119	0.298
148	TOTO	2016	Rp 148,598	Rp 1,290,208	0.115
149	TOTO	2017	Rp 145,137	Rp 573,583	0.253
150	TPIA	2017	Rp 11,414,678	Rp 7,955,033	1.435
151	TRIS	2013	Rp 62,206	Rp 149,729	0.415
152	TRIS	2014	Rp 48,493	Rp 387,853	0.125
153	TRIS	2015	Rp 65,662	Rp 226,897	0.289
154	TRIS	2016	Rp 88,543	Rp 462,578	0.191
155	TRST	2014	Rp 102,529	Rp 1,182,293	0.087
156	TRST	2015	Rp 73,794	Rp 869,537	0.085
157	TSPC	2015	Rp 1,736,028	Rp 1,696,487	1.023
158	TSPC	2017	Rp 1,973,276	Rp 2,002,621	0.985
159	TURI	2014	Rp 154,691	Rp 1,671,182	0.093
160	TURI	2015	Rp 217,840	Rp 1,374,085	0.159
161	TURI	2016	Rp 217,840	Rp 1,896,697	0.115
162	ULTJ	2016	Rp 1,521,372	Rp 2,874,822	0.529
163	ULTJ	2017	Rp 2,120,400	Rp 820,625	2.584

164	UNIC	2013	Rp 171,769	Rp 1,329,113	0.129
165	UNVR	2013	Rp 261,202	Rp 8,419,442	0.031
166	UNVR	2014	Rp 859,127	Rp 6,337,170	0.136
167	UNVR	2015	Rp 628,159	Rp 10,127,542	0.062
168	VOKS	2016	Rp 75,960	Rp 1,291,317	0.059
169	WIIM	2013	Rp 165,349	Rp 447,652	0.369
170	WSBP	2017	Rp 1,028,346	Rp 7,593,431	0.135
171	WTON	2015	Rp 823,631	Rp 1,793,465	0.459
172	WTON	2017	Rp 637,755	Rp 4,216,314	0.151

LAMPIRAN 6: Data Perhitungan *Leverage* (DER) based on ICMD

<b>NO</b>	<b>KODE PERUSAHAAN</b>	<b>TAHUN</b>	<b>DER</b>
1	AKPI	2013	1.030
2	ALDO	2013	1.160
3	ALDO	2017	0.400
4	AMFG	2016	0.530
5	ARNA	2013	0.480
6	ARNA	2015	0.600
7	ARNA	2016	0.630
8	ASII	2013	1.020
9	ASII	2014	0.960
10	ASII	2015	0.940
11	ASII	2016	0.870
12	ASII	2017	1.170
13	AUTO	2013	0.320
14	AUTO	2014	0.420
15	BATA	2013	0.720
16	BATA	2014	0.810
17	BATA	2015	0.450
18	BATA	2016	0.440
19	BATA	2017	0.560
20	BOLT	2017	0.890
21	BRAM	2014	0.730
22	BRAM	2015	0.600
23	BRAM	2017	0.400
24	BRNA	2014	2.640
25	CEKA	2013	1.020
26	CINT	2015	0.210
27	CINT	2017	0.250
28	CPIN	2014	0.910
29	CPIN	2015	0.970
30	CPIN	2017	0.560
31	CTBN	2013	0.820
32	DLTA	2013	0.280
33	DLTA	2015	0.220
34	DLTA	2016	0.180
35	DLTA	2017	0.170
36	DPNS	2015	0.140
37	DPNS	2016	0.120
38	DVLA	2013	0.300



39	DVLA	2015	0.410
40	DVLA	2017	0.420
41	EKAD	2013	0.450
42	EKAD	2014	0.510
43	EKAD	2016	0.190
44	EKAD	2017	0.200
45	FASW	2016	1.720
46	FASW	2017	1.720
47	GDYR	2013	0.980
48	GGRM	2014	0.750
49	GGRM	2015	0.670
50	GGRM	2017	0.580
51	GJTL	2016	2.200
52	HMSP	2013	0.940
53	HMSP	2014	1.100
54	HMSP	2015	0.190
55	HMSP	2017	0.200
56	ICBP	2013	0.600
57	ICBP	2014	0.660
58	ICBP	2015	0.620
59	ICBP	2016	0.560
60	ICBP	2017	0.560
61	IGAR	2016	0.180
62	IGAR	2017	0.160
63	INAI	2015	4.550
64	INCI	2017	3.380
65	INDF	2013	0.280
66	INDF	2014	1.080
67	INDF	2015	1.130
68	INDF	2017	0.130
69	INDS	2013	1.040
70	INDS	2014	0.250
71	INKP	2015	1.680
72	INKP	2017	0.140
73	INTP	2013	0.250
74	INTP	2016	0.150
75	JECC	2016	2.370
76	JECC	2017	0.180
77	JPFA	2015	1.810
78	JPFA	2017	2.520
79	KAEF	2016	1.030
80	KAEF	2017	1.150

81	KBLI	2015	0.510
82	KBLI	2016	0.420
83	KBLI	2017	1.370
84	KBLM	2015	1.210
85	KBLM	2017	0.690
86	KIAS	2014	0.110
87	KLBF	2013	1.840
88	KLBF	2014	0.270
89	KLBF	2015	0.250
90	KLBF	2016	0.220
91	KLBF	2017	0.580
92	LION	2013	0.330
93	LION	2015	0.410
94	LMSH	2014	0.200
95	MERK	2013	0.360
96	MERK	2014	0.290
97	MERK	2017	0.370
98	MLBI	2013	0.800
99	MYOR	2015	1.480
100	MYOR	2016	1.060
101	MYOR	2017	1.030
102	PBRX	2015	0.110
103	PBRX	2016	1.280
104	PICO	2017	1.580
105	RICY	2016	2.120
106	RICY	2017	2.190
107	ROTI	2013	1.320
108	ROTI	2016	1.020
109	ROTI	2017	0.620
110	SCCO	2013	1.490
111	SCCO	2015	0.390
112	SCCO	2016	1.010
113	SCCO	2017	0.470
114	SIDO	2016	0.080
115	SIDO	2017	0.090
116	SKBM	2014	1.040
117	SKLT	2015	1.830
118	SKLT	2016	0.920
119	SKLT	2017	1.070
120	SMBR	2013	0.100
121	SMBR	2014	0.080
122	SMBR	2015	0.240

123	SMBR	2016	0.400
124	SMBR	2017	0.480
125	SMCB	2013	0.700
126	SMCB	2014	0.960
127	SMGR	2013	0.410
128	SMGR	2014	0.370
129	SMGR	2015	1.740
130	SMSM	2014	0.530
131	SMSM	2015	1.810
132	SMSM	2016	0.430
133	SRIL	2013	1.410
134	SRIL	2015	1.180
135	SRIL	2017	1.680
136	TALF	2015	1.050
137	TALF	2016	0.170
138	TALF	2017	0.200
139	TCID	2013	0.240
140	TCID	2014	0.440
141	TCID	2015	0.640
142	TCID	2016	0.230
143	TKIM	2013	2.260
144	TKIM	2017	1.590
145	TOTO	2013	0.690
146	TOTO	2014	0.650
147	TOTO	2015	0.720
148	TOTO	2016	0.690
149	TOTO	2017	0.670
150	TPIA	2017	0.700
151	TRIS	2013	0.590
152	TRIS	2014	0.690
153	TRIS	2015	0.450
154	TRIS	2016	0.850
155	TRST	2014	0.850
156	TRST	2015	0.830
157	TSPC	2015	2.260
158	TSPC	2017	0.460
159	TURI	2014	0.740
160	TURI	2015	0.970
161	TURI	2016	0.830
162	ULTJ	2016	0.210
163	ULTJ	2017	0.230
164	UNIC	2013	0.850

165	UNVR	2013	2.120
166	UNVR	2014	2.110
167	UNVR	2015	1.990
168	VOKS	2016	1.490
169	WIIM	2013	0.570
170	WSBP	2017	1.030
171	WTON	2015	0.920
172	WTON	2017	1.570

## LAMPIRAN 7: Data Perhitungan Pertumbuhan Perusahaan (GA)

$$\text{Pertumbuhan perusahaan} = \frac{\text{Total Aset}_t - \text{Total Aset}_{t-1}}{\text{Total Aset}_{t-1}}$$

NO	KODE PERUSAHAAN	TAHUN	TOTAL ASSETS T	TOTAL ASSETS T-1	GA
1	AKPI	2013	Rp 2,084,567	Rp 1,714,834	0.216
2	ALDO	2013	Rp 301,479	Rp 216,293	0.394
3	ALDO	2017	Rp 498,702	Rp 410,331	0.215
4	AMFG	2016	Rp 5,504,890	Rp 4,270,275	0.289
5	ARNA	2013	Rp 1,135,245	Rp 937,360	0.211
6	ARNA	2015	Rp 1,430,779	Rp 1,259,175	0.136
7	ARNA	2016	Rp 1,543,216	Rp 1,430,779	0.079
8	ASII	2013	Rp 213,994,000	Rp 182,274,000	0.174
9	ASII	2014	Rp 236,029,000	Rp 213,994,000	0.103
10	ASII	2015	Rp 245,435,000	Rp 236,029,000	0.040
11	ASII	2016	Rp 261,855,000	Rp 245,435,000	0.067
12	ASII	2017	Rp 295,646,000	Rp 261,855,000	0.129
13	AUTO	2013	Rp 12,617,678	Rp 8,881,642	0.421
14	AUTO	2014	Rp 14,380,926	Rp 12,617,678	0.140
15	BATA	2013	Rp 680,685	Rp 574,108	0.186
16	BATA	2014	Rp 774,891	Rp 680,685	0.138
17	BATA	2015	Rp 795,258	Rp 774,891	0.026
18	BATA	2016	Rp 804,743	Rp 795,258	0.012
19	BATA	2017	Rp 855,691	Rp 804,743	0.063
20	BOLT	2017	Rp 1,188,799	Rp 938,142	0.267
21	BRAM	2014	Rp 3,833,995	Rp 2,932,878	0.307
22	BRAM	2015	Rp 4,277,420	Rp 3,833,995	0.116
23	BRAM	2017	Rp 4,125,144	Rp 3,977,869	0.037
24	BRNA	2014	Rp 1,334,086	Rp 1,125,133	0.186
25	CEKA	2013	Rp 1,069,627	Rp 1,027,693	0.041
26	CINT	2015	Rp 382,807	Rp 365,092	0.049
27	CINT	2017	Rp 476,578	Rp 399,337	0.193
28	CPIN	2014	Rp 20,862,439	Rp 15,722,197	0.327
29	CPIN	2015	Rp 24,684,915	Rp 20,862,439	0.183
30	CPIN	2016	Rp 24,204,994	Rp 20,852,439	0.161
31	CTBN	2013	Rp 3,363,836	Rp 2,595,800	0.296
32	DLTA	2013	Rp 867,041	Rp 745,307	0.163
33	DLTA	2015	Rp 1,038,322	Rp 991,947	0.047
34	DLTA	2016	Rp 1,197,797	Rp 1,038,322	0.154
35	DLTA	2017	Rp 1,340,843	Rp 1,197,797	0.119

36	DPNS	2015	Rp 274,483	Rp 268,877	0.021
37	DPNS	2016	Rp 296,130	Rp 274,483	0.079
38	DVLA	2013	Rp 1,190,054	Rp 1,074,691	0.107
39	DVLA	2015	Rp 1,376,278	Rp 1,236,248	0.113
40	DVLA	2017	Rp 1,640,886	Rp 1,531,366	0.072
41	EKAD	2013	Rp 343,602	Rp 273,893	0.255
42	EKAD	2014	Rp 411,349	Rp 114,560	2.591
43	EKAD	2016	Rp 702,509	Rp 389,692	0.803
44	EKAD	2017	Rp 796,768	Rp 702,509	0.134
45	FASW	2016	Rp 8,583,224	Rp 6,993,634	0.227
46	FASW	2017	Rp 9,369,892	Rp 8,583,224	0.092
47	GDYR	2013	Rp 1,362,561	Rp 1,198,261	0.137
48	GGRM	2014	Rp 58,220,600	Rp 50,770,251	0.147
49	GGRM	2015	Rp 63,505,413	Rp 58,220,600	0.091
50	GGRM	2017	Rp 66,759,930	Rp 62,951,634	0.060
51	GJTL	2016	Rp 18,697,779	Rp 17,509,505	0.068
52	HMSP	2013	Rp 27,404,594	Rp 26,247,527	0.044
53	HMSP	2014	Rp 28,380,630	Rp 27,404,594	0.036
54	HMSP	2015	Rp 38,010,724	Rp 28,380,630	0.339
55	HMSP	2017	Rp 43,878,865	Rp 43,141,063	0.017
56	ICBP	2013	Rp 21,267,470	Rp 17,819,884	0.193
57	ICBP	2014	Rp 24,910,211	Rp 21,267,470	0.171
58	ICBP	2015	Rp 26,560,624	Rp 24,910,211	0.066
59	ICBP	2016	Rp 28,901,948	Rp 26,560,624	0.088
60	ICBP	2017	Rp 31,619,514	Rp 28,901,948	0.094
61	IGAR	2016	Rp 439,466	Rp 383,936	0.145
62	IGAR	2017	Rp 513,023	Rp 439,466	0.167
63	INAI	2015	Rp 1,330,259	Rp 897,282	0.483
64	INCI	2017	Rp 303,788	Rp 269,351	0.128
65	INDF	2013	Rp 78,092,789	Rp 59,389,405	0.315
66	INDF	2014	Rp 85,938,885	Rp 78,092,789	0.100
67	INDF	2015	Rp 91,831,526	Rp 85,938,885	0.069
68	INDF	2017	Rp 87,939,488	Rp 82,174,515	0.070
69	INDS	2013	Rp 2,196,518	Rp 1,664,779	0.319
70	INDS	2014	Rp 2,282,666	Rp 2,196,518	0.039
71	INKP	2015	Rp 103,162,005	Rp 81,073,679	0.272
72	INKP	2017	Rp 103,428,629	Rp 92,423,557	0.119
73	INTP	2013	Rp 26,607,241	Rp 22,755,160	0.169
74	INTP	2016	Rp 30,150,580	Rp 27,638,360	0.091
75	JECC	2016	Rp 1,587,211	Rp 1,358,464	0.168
76	JECC	2017	Rp 1,927,985	Rp 1,587,211	0.215
77	JPFA	2015	Rp 17,159,466	Rp 15,730,435	0.091

78	JPFA	2017	Rp 21,088,870	Rp 19,251,026	0.095
79	KAEF	2016	Rp 4,612,563	Rp 3,236,224	0.425
80	KAEF	2017	Rp 6,096,149	Rp 4,612,563	0.322
81	KBLI	2015	Rp 1,551,800	Rp 1,337,351	0.160
82	KBLI	2016	Rp 1,871,422	Rp 1,551,800	0.206
83	KBLI	2017	Rp 3,013,761	Rp 1,871,422	0.610
84	KBLM	2015	Rp 654,386	Rp 647,697	0.010
85	KBLM	2017	Rp 1,235,199	Rp 639,091	0.933
86	KIAS	2014	Rp 2,352,543	Rp 2,270,905	0.036
87	KLBF	2013	Rp 11,315,061	Rp 9,417,957	0.201
88	KLBF	2014	Rp 12,425,032	Rp 11,315,061	0.098
89	KLBF	2015	Rp 13,696,417	Rp 12,425,032	0.102
90	KLBF	2016	Rp 15,226,009	Rp 13,696,417	0.112
91	KLBF	2017	Rp 16,616,239	Rp 15,226,009	0.091
92	LION	2013	Rp 498,568	Rp 433,497	0.150
93	LION	2015	Rp 639,330	Rp 600,103	0.065
94	LMSH	2013	Rp 141,698	Rp 128,548	0.102
95	MERK	2013	Rp 696,946	Rp 569,431	0.224
96	MERK	2014	Rp 743,935	Rp 641,647	0.159
97	MERK	2017	Rp 847,067	Rp 743,935	0.139
98	MLBI	2013	Rp 1,782,148	Rp 1,152,048	0.547
99	MYOR	2015	Rp 11,342,716	Rp 10,291,108	0.102
100	MYOR	2016	Rp 12,922,422	Rp 11,342,716	0.139
101	MYOR	2017	Rp 14,915,850	Rp 12,922,422	0.154
102	PBRX	2015	Rp 6,490,724	Rp 4,557,725	0.424
103	PBRX	2016	Rp 6,980,093	Rp 6,490,724	0.075
104	PICO	2017	Rp 720,239	Rp 605,882	0.189
105	RICY	2016	Rp 1,288,684	Rp 1,198,194	0.076
106	RICY	2017	Rp 1,374,445	Rp 1,288,684	0.067
107	ROTI	2013	Rp 1,822,689	Rp 1,204,945	0.513
108	ROTI	2016	Rp 2,919,641	Rp 2,706,324	0.079
109	ROTI	2017	Rp 4,559,574	Rp 2,919,641	0.562
110	SCCO	2013	Rp 1,762,032	Rp 1,486,921	0.185
111	SCCO	2015	Rp 1,773,144	Rp 1,656,007	0.071
112	SCCO	2016	Rp 2,449,935	Rp 1,773,144	0.382
113	SCCO	2017	Rp 4,014,245	Rp 2,449,935	0.639
114	SIDO	2016	Rp 2,987,614	Rp 2,796,111	0.068
115	SIDO	2017	Rp 3,158,198	Rp 2,987,614	0.057
116	SKBM	2014	Rp 649,534	Rp 497,653	0.305
117	SKLT	2015	Rp 377,111	Rp 331,575	0.137
118	SKLT	2016	Rp 568,240	Rp 377,111	0.507
119	SKLT	2017	Rp 636,284	Rp 568,240	0.120

120	SMBR	2013	Rp 2,711,416	Rp 1,198,586	1.262
121	SMBR	2014	Rp 2,926,361	Rp 2,711,416	0.079
122	SMBR	2015	Rp 3,268,668	Rp 2,926,361	0.117
123	SMBR	2016	Rp 4,368,877	Rp 3,268,668	0.337
124	SMBR	2017	Rp 5,060,337	Rp 4,368,877	0.158
125	SMCB	2013	Rp 14,894,990	Rp 12,168,517	0.224
126	SMCB	2014	Rp 17,195,352	Rp 14,894,990	0.154
127	SMGR	2013	Rp 30,792,884	Rp 26,579,084	0.159
128	SMGR	2014	Rp 34,314,666	Rp 30,792,884	0.114
129	SMGR	2015	Rp 38,153,119	Rp 34,314,666	0.112
130	SMSM	2014	Rp 1,749,395	Rp 1,701,103	0.028
131	SMSM	2015	Rp 2,220,108	Rp 1,749,395	0.269
132	SMSM	2016	Rp 2,254,740	Rp 2,220,108	0.016
133	SRIL	2013	Rp 5,590,082	Rp 4,278,513	0.307
134	SRIL	2015	Rp 11,481,513	Rp 8,691,096	0.321
135	SRIL	2017	Rp 16,161,423	Rp 12,726,172	0.270
136	TALF	2015	Rp 434,210	Rp 431,533	0.006
137	TALF	2016	Rp 881,673	Rp 434,210	1.031
138	TALF	2017	Rp 921,241	Rp 881,673	0.045
139	TCID	2013	Rp 1,465,952	Rp 1,261,573	0.162
140	TCID	2014	Rp 1,853,235	Rp 1,465,952	0.264
141	TCID	2015	Rp 2,082,097	Rp 1,853,235	0.123
142	TCID	2016	Rp 2,185,101	Rp 2,082,097	0.049
143	TKIM	2013	Rp 31,962,810	Rp 25,935,346	0.232
144	TKIM	2017	Rp 34,965,695	Rp 33,472,865	0.045
145	TOTO	2013	Rp 1,746,178	Rp 1,522,664	0.147
146	TOTO	2014	Rp 2,027,289	Rp 1,746,178	0.161
147	TOTO	2015	Rp 2,439,541	Rp 2,027,289	0.203
148	TOTO	2016	Rp 2,581,441	Rp 2,439,541	0.058
149	TOTO	2017	Rp 2,826,491	Rp 2,581,441	0.095
150	TPIA	2017	Rp 40,471,995	Rp 28,608,858	0.415
151	TRIS	2013	Rp 449,009	Rp 366,248	0.226
152	TRIS	2014	Rp 523,901	Rp 449,009	0.167
153	TRIS	2015	Rp 574,346	Rp 523,901	0.096
154	TRIS	2016	Rp 639,701	Rp 574,346	0.114
155	TRST	2014	Rp 3,261,285	Rp 3,260,920	0.000
156	TRST	2015	Rp 3,357,359	Rp 3,261,285	0.029
157	TSPC	2015	Rp 6,284,729	Rp 5,592,730	0.124
158	TSPC	2017	Rp 7,434,900	Rp 6,585,807	0.129
159	TURI	2014	Rp 3,465,316	Rp 3,312,385	0.046
160	TURI	2015	Rp 4,361,587	Rp 3,962,895	0.101
161	TURI	2016	Rp 4,361,587	Rp 3,962,895	0.101



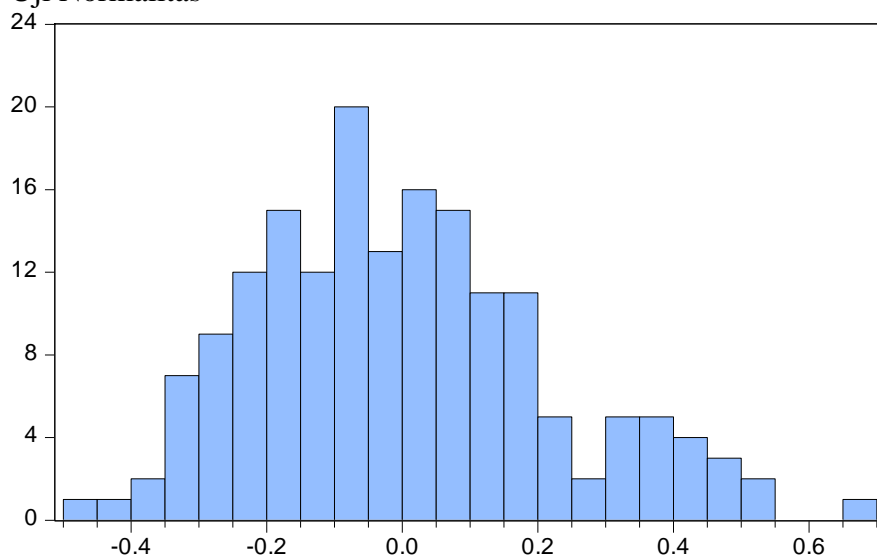
162	ULTJ	2016	Rp 4,239,200	Rp 3,539,996	0.198
163	ULTJ	2017	Rp 5,186,940	Rp 4,239,200	0.224
164	UNIC	2013	Rp 3,303,941	Rp 2,400,778	0.376
165	UNVR	2013	Rp 13,348,188	Rp 11,984,979	0.114
166	UNVR	2014	Rp 14,280,670	Rp 7,485,249	0.908
167	UNVR	2015	Rp 18,920,136	Rp 15,729,945	0.203
168	VOKS	2016	Rp 1,881,314	Rp 1,668,210	0.128
169	WIIM	2013	Rp 1,229,011	Rp 1,207,251	0.018
170	WSBP	2017	Rp 14,919,549	Rp 13,734,267	0.086
171	WTON	2015	Rp 4,456,098	Rp 3,802,333	0.172
172	WTON	2017	Rp 7,067,976	Rp 4,662,320	0.516

## LAMPIRAN 8: Hasil Pengujian Statistik Deskriptif

	DPR	ROA	CR	DER	GA
Mean	0.358450	0.106726	0.959207	0.832035	0.204792
Median	0.306850	0.083950	0.354971	0.665000	0.137866
Maximum	0.998900	0.669100	11.42662	4.550000	2.590686
Minimum	0.000800	0.007500	0.004786	0.080000	0.000112
Std. Dev.	0.233760	0.088637	1.713174	0.678056	0.263421
Skewness	0.661776	2.599074	3.783256	1.851232	5.283071
Kurtosis	2.717197	13.25440	19.41407	8.333685	42.69114
Jarque-Bera	13.12766	947.2430	2341.163	302.1211	12090.38
Probability	0.001410	0.000000	0.000000	0.000000	0.000000
Sum	61.65340	18.35690	164.9836	143.1100	35.22417
Sum Sq. Dev.	9.344055	1.343465	501.8788	78.61899	11.86578
Observations	172	172	172	172	172

## LAMPIRAN 9: Hasil Uji Asumsi Klasik

## 1) Uji Normalitas



## 2) Uji Multikolinearitas

Variance Inflation Factors  
Date: 11/15/18 Time: 21:48  
Sample: 1 172  
Included observations: 172

Variable	Coefficient Variance	Uncentered VIF	Centered VIF
C	0.001650	5.747579	NA
ROA	0.037354	2.498845	1.016497
CR	0.000112	1.493226	1.135255
DER	0.000717	2.871914	1.142118
GA	0.004175	1.613348	1.003367

## 3) Uji Heterokadestisitas

Heteroskedasticity Test: Glejser

F-statistic	1.103405	Prob. F(4,167)	0.3567
Obs*R-squared	4.428717	Prob. Chi-Square(4)	0.3511
Scaled explained SS	4.288034	Prob. Chi-Square(4)	0.3684

Variable	Coefficient	Std. Error	t-Statistic	Prob.
C	0.158041	0.024133	6.548653	0.0000
ROA	0.190244	0.114836	1.656657	0.0995
CR	0.002676	0.006279	0.426221	0.6705
DER	0.004728	0.015912	0.297132	0.7667
GA	-0.048929	0.038390	-1.274526	0.2042

R-squared	0.025748	Mean dependent var	0.174826
Adjusted R-squared	0.002413	S.D. dependent var	0.132180
S.E. of regression	0.132020	Akaike info criterion	-1.183088
Sum squared resid	2.910689	Schwarz criterion	-1.091591
Log likelihood	106.7456	Hannan-Quinn criter.	-1.145965
F-statistic	1.103405	Durbin-Watson stat	1.595836
Prob(F-statistic)	0.356738		

## 4) Uji Auto Korelasi

Variable	Coefficient	Std. Error	t-Statistic	Prob.
C	0.317802	0.040617	7.824405	0.0000
ROA	0.784201	0.193271	4.057516	0.0001
CR	-0.004449	0.010568	-0.420969	0.6743
DER	-0.007296	0.026781	-0.272447	0.7856
GA	-0.159719	0.064611	-2.471993	0.0144

R-squared	0.117661	Mean dependent var	0.358450
Adjusted R-squared	0.096527	S.D. dependent var	0.233760
S.E. of regression	0.222191	Akaike info criterion	-0.141916
Sum squared resid	8.244628	Schwarz criterion	-0.050419
Log likelihood	17.20478	Hannan-Quinn criter.	-0.104793
F-statistic	5.567390	Durbin-Watson stat	1.990133
Prob(F-statistic)	0.000313		

## LAMPIRAN 10: Uji Analisis Regresi Berganda

Variable	Coefficient	Std. Error	t-Statistic	Prob.
C	0.317802	0.040617	7.824405	0.0000
ROA	0.784201	0.193271	4.057516	0.0001
CR	-0.004449	0.010568	-0.420969	0.6743
DER	-0.007296	0.026781	-0.272447	0.7856
GA	-0.159719	0.064611	-2.471993	0.0144
R-squared	0.117661	Mean dependent var		0.358450
Adjusted R-squared	0.096527	S.D. dependent var		0.233760
S.E. of regression	0.222191	Akaike info criterion		-0.141916
Sum squared resid	8.244628	Schwarz criterion		-0.050419
Log likelihood	17.20478	Hannan-Quinn criter.		-0.104793
F-statistic	5.567390	Durbin-Watson stat		1.990133
Prob(F-statistic)	0.000313			

## LAMPIRAN 11: Hasil Uji F

R-squared	0.117661	Mean dependent var	0.358450
Adjusted R-squared	0.096527	S.D. dependent var	0.233760
S.E. of regression	0.222191	Akaike info criterion	-0.141916
Sum squared resid	8.244628	Schwarz criterion	-0.050419
Log likelihood	17.20478	Hannan-Quinn criter.	-0.104793
F-statistic	5.567390	Durbin-Watson stat	1.990133
Prob(F-statistic)	0.000313		

## LAMPIRAN 12: Hasil Uji T

Variable	Coefficient	Std. Error	t-Statistic	Prob.
C	0.317802	0.040617	7.824405	0.0000
ROA	0.784201	0.193271	4.057516	0.0001
CR	-0.004449	0.010568	-0.420969	0.6743
DER	-0.007296	0.026781	-0.272447	0.7856
GA	-0.159719	0.064611	-2.471993	0.0144

LAMPIRAN 13: Hasil Uji R<sup>2</sup>

R-squared	0.117661	Mean dependent var	0.358450
Adjusted R-squared	0.096527	S.D. dependent var	0.233760
S.E. of regression	0.222191	Akaike info criterion	-0.141916
Sum squared resid	8.244628	Schwarz criterion	-0.050419
Log likelihood	17.20478	Hannan-Quinn criter.	-0.104793
F-statistic	5.567390	Durbin-Watson stat	1.990133
Prob(F-statistic)	0.000313		

## LAMPIRAN 14 : Perusahaan Manufaktur Tidak Membagikan Deviden

<b>NO</b>	<b>NAMA PERUSAHAAN</b>	<b>KETERANGAN (TAHUN)</b>
1	ADES	2013, 2014, 2015, 2016, 2017
2	ADMG	2013, 2014, 2015, 2016, 2017
3	AGII	2016, 2017
4	AISA	2013, 2014, 2015, 2016, 2017
5	AKKU	2013, 2014, 2015, 2016, 2017
6	AKPI	2017
7	ALDO	2013, 2014, 2015, 2016
8	ALKA	2013, 2014, 2015, 2016, 2017
9	ALMI	2013, 2014, 2015, 2016, 2017
10	ALTO	2013, 2014, 2015, 2016, 2017
11	AMFG	2013, 2014
12	AMIN	2016, 2017
13	APLI	2013, 2014, 2015, 2016, 2017
14	ARGO	2013, 2014, 2015, 2016, 2017
15	ARNA	2014
16	BAJA	2013, 2014, 2015, 2016, 2017
17	BATA	2013
18	BELL	2017
19	BIMA	2013, 2014, 2015, 2016, 2017
20	BOLT	2016
21	BRAM	2013
22	BRNA	2013, 2015, 2017
23	BRPT	2013, 2014, 2015, 2016, 2017
24	BTEK	2015, 2016
25	BTON	2013, 2014, 2015, 2016, 2017
26	BUDI	2013, 2014, 2015, 2016
27	CAMP	2017
28	CEKA	2014, 2015
29	CINT	2013
30	CNTX	2013, 2014, 2015, 2016, 2017
31	CPRO	2014, 2015, 2016
32	CTBN	2014, 2015, 2016, 2017
33	DJAK	2014, 2015, 2016, 2017
34	DAVO	2013
35	DPNS	2013, 2014
36	DVLA	2014, 2016
37	ERTX	2013, 2014, 2015, 2016, 2017
38	ESTI	2013, 2014, 2015, 2016, 2017

39	ETWA	2013, 2014, 2015, 2016, 2017
40	FASW	2013, 2015
41	FPNI	2013, 2014, 2015, 2016, 2017
42	GDST	2013, 2014, 2015, 2016, 2017
43	GDYR	2014, 2015, 2017
44	GGRM	2013
45	GJTL	2015, 2017
46	GMFI	2017
47	HDTX	2013, 2014, 2015, 2016, 2017
48	IGAR	2013, 2014, 2015
49	IKAI	2013, 2014, 2015, 2016, 2017
50	IKBI	2014, 2015, 2016
51	IMAS	2014, 2015, 2016, 2017
52	IMPC	2014
53	INAF	2013, 2014, 2015, 2016, 2017
54	INAI	2013, 2014
55	INCI	2013, 2014, 2015, 2016
56	INDR	2013, 2014, 2015, 2016, 2017
57	INDS	2015, 2016
58	INKP	2013
59	INRU	2013, 2014, 2015, 2016, 2017
60	IPOL	2013, 2014, 2015, 2017
61	ISSP	2013, 2014, 2017
62	ITMA	2013, 2014, 2015
63	JECC	2013, 2014, 2015
64	JKSW	2013, 2014, 2015, 2016, 2017
65	JPFA	2014, 2016
66	JPRS	2013, 2014, 2015, 2016, 2017
67	KAEF	2013, 2015
68	KARW	2014
69	KBLI	2013
70	KBLM	2013, 2014
71	KBRI	2013, 2014, 2015, 2016, 2017
72	KDSI	2013, 2014, 2015, 2016, 2017
73	KIAS	2013, 2015, 2016, 2017
74	KICI	2013, 2014, 2015, 2016, 2017
75	KLBI	2014
76	KRAH	2013, 2014, 2015, 2016, 2017
77	KRAS	2013, 2014, 2015, 2016, 2017
78	LION	2014, 2016
79	LMPI	2013, 2015, 2016, 2017
80	LMPO	2014

81	LMSH	2014, 2016
82	LPIN	2013, 2014, 2015, 2016, 2017
83	MAIN	2013, 2014, 2015, 2017
84	MASA	2013, 2014, 2015, 2016, 2017
85	MBTO	2013, 2014, 2015, 2016, 2017
86	MDKI	2017
87	MERK	2016
88	MLIA	2013, 2014, 2015, 2016, 2017
89	MRAT	2013, 2014, 2015, 2016, 2017
90	MRYRX	2014
91	MYOR	2013, 2014
92	MYRX	2015, 2016
93	MYTX	2013, 2014, 2015, 2016, 2017
94	NIKL	2013, 2014, 2015, 2016, 2017
95	NIPS	2013, 2014, 2015, 2016, 2017
96	PBID	2017
97	PBRX	2013, 2014, 2017
98	PCAR	2016, 2017
99	PICO	2013, 2014, 2015
100	POLY	2013, 2014, 2015, 2016, 2017
101	PRAS	2013, 2014, 2015, 2016, 2017
102	PSDN	2013, 2014, 2015, 2016, 2017
103	PTSN	2013, 2014, 2015, 2016, 2017
104	PYFA	2013, 2014, 2015, 2016, 2017
105	RICY	2013, 2014
106	RMBA	2013, 2014, 2015, 2016, 2017
107	ROTI	2014, 2015
108	SCCO	2014
109	SCPI	2013, 2014, 2015, 2016, 2017
110	SIAP	2013, 2014, 2015, 2016, 2017
111	SIMA	2013, 2014, 2015, 2016, 2017
112	SIPD	2013, 2014, 2015, 2016, 2017
113	SKBM	2013, 2014, 2015, 2016, 2017
114	SKLT	2013, 2014
115	SMCB	2016, 2017
116	SMGR	2016
117	SMSM	2013
118	SOBI	2013, 2014, 2015, 2016, 2017
119	SPMA	2013, 2014, 2015, 2016, 2017
120	SQBO	2014, 2015, 2016, 2017
121	SRSN	2013, 2014, 2015, 2016, 2017
122	SSTM	2013, 2014, 2015, 2016, 2017

123	STAR	2014, 2015, 2016, 2017
124	STTP	2013, 2014, 2015, 2016, 2017
125	SULI	2013, 2014, 2015, 2016, 2017
126	TALF	2013, 2014
127	TBMS	2013, 2014, 2015, 2016, 2017
128	TCID	2017
129	TFCO	2015, 2016, 2017
130	TIRA	2014, 2015, 2016
131	TIRT	2013, 2014, 2015, 2017
132	TPIA	2013, 2014, 2015, 2016
133	TRST	2017
134	TSPC	2013, 2014
135	ULTJ	2013, 2014, 2015
136	UNIC	2014, 2015
137	UNIT	2013, 2014, 2015, 2016, 2017
138	UNSP	2015
139	UNTX	2013, 2014
140	VOKS	2013, 2014, 2015, 2017
141	WIIM	2017
142	WOOD	2016, 2017
143	WTON	2013
144	YPAS	2013, 2014, 2015, 2016, 2017