

## CHAPTER II

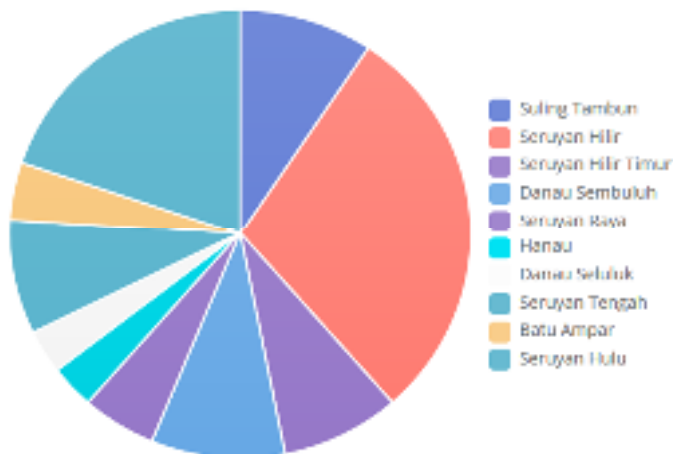
### GENERAL DESCRIPTION OF SERUYAN REGENCY

#### 2.1. Geographical Areas

Seruyan Regency is one of the thirteen regencies which comprise the Central Kalimantan Province on the island of Kalimantan. The town of Kuala Pembuang is the capital of Seruyan Regency. Seruyan Regency is one of the Regencies in Central Kalimantan Province covering an area around  $\pm 16,404 \text{ Km}^2$  or  $\pm 1,670,040.76 \text{ Ha}$ , which is 11.6% of the total area of Central Kalimantan.

Figure 2.1

Wide percentage of Seruyan regency according to Sub-District



Source: Kabupaten Seruyan Website 2019

Based on Law Number 5 Year 2002 there are some regencies in Central Kalimantan Province namely Katingan regency, Seruyan regency, Sukamara regency, Lamandau regency, Pulang Pisau regency, Gunung Mas regency, Murung Raya regency, and Barito Timur regency

(State Gazette of the Republic of Indonesia Year 2002 Number 18, additional State Gazette Number 4180), Seruyan regency area around ± 16.404 km<sup>2</sup> (11.6% of the total area of Central Kalimantan).

Administratively, to bring local government closer to all levels of society, afterwards in 2010 through Seruyan Distric Regulation Number 6 year 2010 it has been unfoldment from 5 sub-districts to 10 sub-districts consisting of 97 villages and 3 wards. The list of sub-districts referred to is presented in the table below.

Figure 2.2

Area of Seruyan Regency based on District, Village, & Ward

Kaburahan*/Desa		(km <sup>2</sup> )	Kaburahan*/Desa		(km <sup>2</sup> )
(1)		(2)	(3)		(4)
<b>I.</b>	<b>Seruyan Hilir</b>	<b>4.659</b>	<b>VII.</b>	<b>Sallang Tambun</b>	<b>1.484</b>
1	Kuala Tembawang I	48	1	Tembawang Magin	230
2	Kuala Tembawang II	74	2	Tembawang Sempit	258
3	Sungai Pehin	514	3	Tembawang Hestian	109
4	Petarong Lunau	1.121	4	Tumbang Lungken	234
5	Tanjung Rungas	830	5	Tumbang Salau	239
6	Jahitan	741	6	Tembawang Gugup	72
7	Muara Dua	475	7	Rangkong Muntak	95
8	Batang	882	8	Tanjung Telak	156
9	Sungai Linding	13	9	Rantau Betang	11
10	Peralit Bayu	44	<b>VIII.</b>	<b>Danu Sembuluh</b>	<b>586</b>
<b>II.</b>	<b>Danu Sembuluh</b>	<b>1.958</b>	1	Aran Dara	89
1	Telaga Pulang	342	2	Tanjung Lina	70
2	Sembuluh II	84	3	Tanjung Paring	91
3	Cempaka Dara	261	4	Tanjung Rungas	107
4	Uluh Mulu	190	5	Rangka Raya	108
5	Pero	94	<b>IX.</b>	<b>Mata Ampur</b>	<b>468,68</b>
6	Bunau Ujung	290	1	Sebatu	83
7	Sembuluh I	142	2	Sandul	114
<b>III.</b>	<b>Hanau</b>	<b>549</b>	3	Kalang	105
1	Tembawang Hulu I	54	4	Darasa	92,80
2	Tembawang Hulu II	98	5	Wana Tima	9,91
3	Tanjung Hanau	90	6	Saka Mulya	9,13
4	Paring Batang	103	7	Durian Kati	92,09
5	Buhar	78	8	Salabu	103
6	Derangan	58	9	Datu Menanga	57
7	Paring Raya	100	<b>X.</b>	<b>Seruyan Hulu</b>	<b>3.262</b>
<b>IV.</b>	<b>Seruyan Tengah</b>	<b>4.343,32</b>	1	Mirandang	164
1	Pangka	280	2	Tembawang Saka	109
2	Panyimpa	147	3	Tumbang Mungul	492
3	Dusun Unggul	54	4	Mojang Baru	271
4	Gantung Penguyutan	29,88	5	Bantau Paring	242
5	Talak Bayur	67,97	6	Mangah Paul	265
6	Saka Mandang	79	7	Tanuk Dalawan	60
7	Ayawan	74	8	Tembawang Kalam	99
8	Mugi Panyaha	90	9	Tembawang Kaban	90
9	Baki Stokoh	60	10	Tumbang Dang	104
10	Tumbang Batu	86	11	Tumbang Kasai	49
11	Kel. Rantau Pulau	83	12	Tumbang Seiawa	62
12	Tanora Dam	228,72	13	Serandu Hanau	62

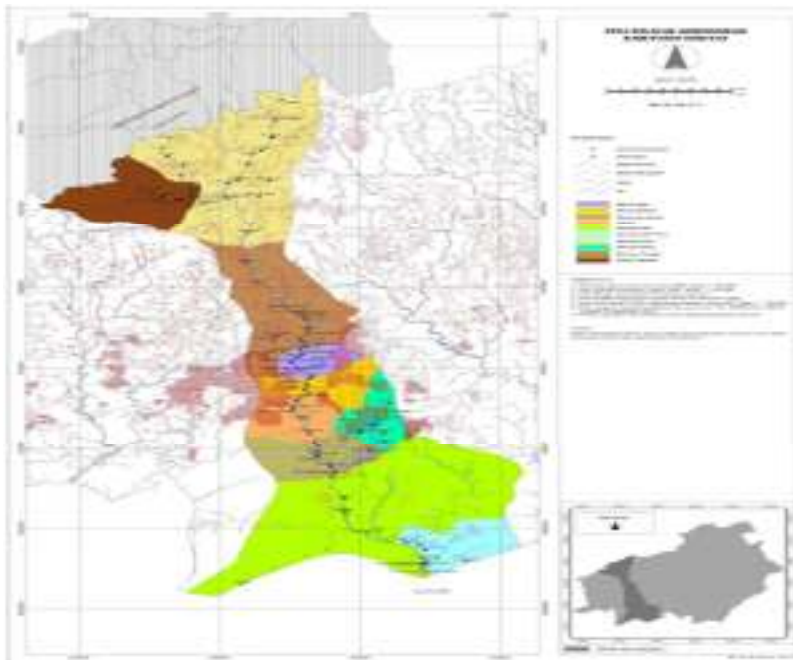
	12	Tanjung Batu	228.72		13	Sipantu Hamu	82
	13	Bumi Jaya	9.13		14	Tumbang Kubang	37
	14	Sukorejo	9.13		15	Tumbang Senan	29
	15	Suka Maja	9.23		16	Kram Balung	173
	16	Suka Makmur	9.23		17	Tumbang Laku	111
	17	Suka Jaya	9.51		18	Bumi Sagon	57
	18	Batu Agung	9.23		19	Tumbang Taberan	61
	19	Pansa Jaya	9.23		20	Tanjung Puku	
	20	Ringin Agung	9.18				
	<b>V.</b>	<b>Seruyan Hilir Timur</b>	<b>1.428</b>				
	1	Kacika Bhalan	74				
	2	Halimang Jaya	15				
	3	Banpin Haya	15				
	4	Mekar Indah	16				
	5	Sungai Bukau	133				
	6	Pemalang Panjang	1.225				
	<b>VI.</b>	<b>Seruyan Raya</b>	<b>869</b>				
	1	Terawan	269				
	2	Selantik	231				
	3	Lungusu	123				
	4	Banpin Raya	168				
	5	Banpicat	144				
	6	Tabiku	162				

*Source: Kabupaten Seruyan Website 2019*

The astronomical position of Seruyan Regency is located between 0077'- 3056' South Latitude and 111049' - 112084' East Longitude, with the following regional boundaries:

1. North border: Melawai regency of West Kalimantan Province
2. South border: Java Sea
3. East border: Kotawaringin Timur regency
4. West border: Lamandau regency.

**Figure 2.3**  
**Seruyan Regency Map**



*Source: Kabupaten Seruyan Website 2019*

Based on regional map of Central Kalimantan, with the position of Seruyan Regency directly adjacent to the Java Sea, residents of Malawi Regency, Katingan Regency, and East Kotawaringin Regency, those who will go to Java and Sumatra, will be closer if they pass Seruyan Regency rather than to go to Banjarmasin. Furthermore, this geostrategic position will increase comparative advantage of Kuala Pembuang port that is owned by Seruyan regency. In particular, it will attract the economy from the districts around Seruyan Hilir District including agriculture, plantations, forests, fisheries, livestock, mining, tourism, small and medium industries.

## 2.2. Population

The population of Seruyan Regency was 146.914 at the 2012 census and the latest official estimate at January 2014 was 149.835. Seruyan Regency consists of five districts, tabulated below with their populations at the 2012 Census:

**Table 2.1**

**Total population of the District of Seruyan Regency in 2012**

No	District	Male	Female	Quantity
1	Seruyan Hilir	15.997	14.52	30.517
2	Seruyan Hilir Timur	3.562	3.432	6.994
3	Danau Sembuluh	5.748	4.896	10.644
4	Seruyan Raya	11.193	8.717	19.91
5	Hanau	10.478	9.14	19.618
6	Danau Seluluk	10.167	7.908	18.075
7	Seruyan Tengah	11	9.71	20.71
8	Batu Ampar	4.144	3.525	7.669
9	Seruyan Hulu	5.16	4.694	9.854
10	Suling Tambun	1.535	1.388	2.923
	TOTAL	78.984	67.93	146.914

*Source: Kabupaten Seruyan Website 2019*

The Seruyan population is mostly in the age group of 25-29 years (18,622 people) and was followed by the age group 0-4 years (16,103 people). Based on the data presented below, it is known that the population of Seruyan is dominated by ages 0-39 years. This condition must be anticipated both in terms of fulfilling food needs, education, health and other basic services.

**Table 2.2**  
**Number of Population by Age Group, Gender, and Gender Ratio**

Kecamatan (District)	Luas Wilayah (Area) (km <sup>2</sup> )	Jumlah (Quantity)		Kepadatan (Density) (jiwa/km <sup>2</sup> )	Rata-rata per rumah tangga  (Average per household)
		Penduduk (Population)	Rumah Tangga (Household)		
<b>1. Seruyan Hilir</b>	4 659,00	30 517	7 902	6,55	3,86
<b>2. Seruyan Hilir Timur</b>	1 428,00	6 994	1 876	4,90	3,73
<b>3. Danau Sembuluh</b>	1 555,00	10 644	3 047	6,85	3,49
<b>4. Seruyan Raya</b>	869,00	19 910	5 960	22,91	3,34
<b>5. Hanau</b>	549,00	19 618	5 890	35,73	3,33
<b>6. Danau Seluluk</b>	586,00	18 075	5 600	30,84	3,23
<b>7. Seruyan Tengah</b>	1 343,32	20 710	5 795	15,42	3,57
<b>8. Batu Ampar</b>	668,68	7 669	2 215	11,70	3,46
<b>9. Seruyan Hulu</b>	3 262,00	9 854	2 474	3,02	3,98

<b>10. Suling Tambun</b>	1 484,00	2 923	705	1,97	4,15
Seruyan	<b>16 404,00</b>	<b>146 914</b>	<b>41 464</b>	<b>8,96</b>	<b>3,54</b>

*Source: Kabupaten Seruyan Website 2019*

The following describes government performance related to public welfare, which includes indicators of welfare and economic equity, social welfare, cultural arts and sports.

### **2.3. Economic**

Small and medium industry sector in Seruyan Regency is focused on Seruyan Hilir and Hanau district. The main products includes shrimp, crab, dry shrimp, pipih crackers, and shrimp paste. Furthermore, there are some local market as the center of economics, goods, and services that are located in Kuala Pembuang of Seruyan Hilir district such as Pasar induk, Pasar sarik, and Pasar sarik.

Meanwhile, for industrial economic groups that are developing in Seruyan Regency such as wood industry, palm oil, rattan industry and patchouli distillation industry. Especially for the rattan industry and patchouli distillation, there are areas in Seruyan Tengah District, Seruyan Hulu District and Tambun Suling District.

Supporting facilities for the production of rattan manufacture have provided 2 (two) rattan storage warehouses (UPT Rantau Pulut Rattan) which include 5 (five) pieces of rattan breaking machines and 1 (one) electric machine for driving rattan breaking machines . Whereas patchouli distillation has provided several patchouli distillation machines in Sukamandang Village. From year to year, the number of non-formal small industries tends to experience less volatile fluctuations where their presence is strongly influenced by current market demand and national economic conditions. Both of these factors greatly influence the formation of the

number of Non-Formal Small Industries. The small non-formal small industry in Seruyan District in 2011 is presented in the following table.

**Table 2.3**

**The Number of Non Formal Small Industries in Seruyan District in 2011**

No	Kinds of Idustry	Quantity	Employee	Production Capacity/year	
				Unit	Quantity
1	Kerupuk Pipih	5	10	Kg	
2	Air Minum Isi Ulang	15	30	Galon	
3	Kue/Roti	8	12	Biji	
4	Kue basah	25	30	Biji	
5	Kerupuk Gandum	4	6	Kg	
6	Ebi	54	810	Kg	
7	Kopra	6	20	Ton	
8	Minyak Kelapa	3	45	Botol	
9	Gula Aren	15	30	Kg	
10	Minuman Segar	2	6	Botol	
11	Pengolahan Beras	10	16	Kg	
12	Ikan asin	70	140	Ton	
13	Penjahit Pakaian	18	72	Lembar	
14	Batu Bata	98	392	Biji	
15	Gypsum	2	6	Meter	
16	Batako	6	24	Biji	



17	Penyulingan nilam	5	23	Liter	
18	Mebel	33	99	Buah	
19	Etalase alumunium	3	12	Buah	
20	Anyaman purun	57	40	Buah	
21	Anyaman Rotan	45	135	Buah	
22	Bengkel Motor	105	210	Buah	
23	Bengkel Mobil	25	75	Buah	
24	Pembuatan Kapal	10	50	Buah	
25	Tombak dan Mandau	10	20	Buah	
26	Service mesin	6	15	Buah	
27	Bengkel Las	15	60	Buah	
28	Cap Stempel	3	3	Buah	
29	Sablon	10	20	Buah	
30	Jala Ikan	30	30	Buah	
31	Salon	40	80	Orang	
32	Reparasi Radio	8	8	Unit	
33	Service Jam	6	6	Buah	
34	Kerupuk Tenggiri	15	30	Kg	
35	Terasi	48	50	Ton	
	Total	815	2.615		

*Source: Kabupaten Seruyan Website 2019*

For large scale industries in Seruyan Regency, there are 12 palm oil companies with the largest production capacity around 50 tons / hour, namely 5 units in Danau Sembuluh

District, 4 units Hanau District, and 3 units in Seruyan Tengah District which is owned by private sector.

Public and business facilities, Seruyan District is mainly focused on Kuala Pembuang.

The area will be built to the standards of a modern city equipped with:

1. Public facilities such as the Sport Center, Public Transport Terminals, and Parks.
2. Islamic Centre.
3. Public Hospital and Private Hospital.
4. Business areas (business centers) such as office areas, supermarkets and banking

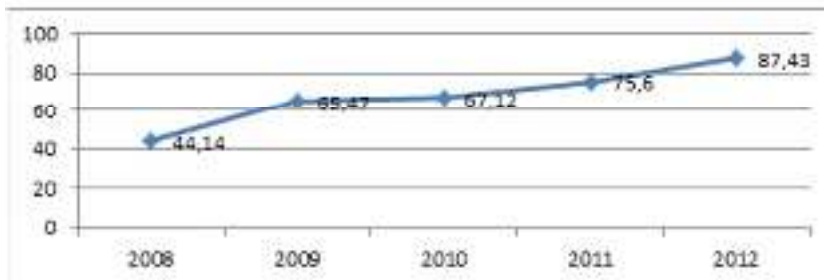
institutions (BRI, BPD, BNI, Bank Mandiri).

A. Percentage of Active Cooperatives

Active Cooperatives are cooperatives which in the last two years have held Annual Member Meetings which in the last year carried out business activities. This indicator is calculated by calculating the number of active cooperatives divided by the number of all cooperatives in Seruyan District.

**Figure 2.4**

Persentase Koperasi Aktif Tahun 2008 - 2012 (%)



Source: Kabupaten Seruyan Website 2019

In 2008 the active cooperatives were recorded at 44.14%, up in 2009 to 65.47%, then rose slightly to 67.12% in 2012 rose again to become 75.6% and then in 2012 it continued to rise to 87.43 %. This indicator continues to show a positive trend rising every year.

**Figure 2.5**

Banyaknya Koperasi Aktif dan Tidak Aktif Menurut Kecamatan

Kecamatan	010. Darajat III
Aktif	10
Tidak Aktif	5
Jumlah	15
Kecamatan	011. Serang III
Aktif	4
Tidak Aktif	0
Jumlah	4
Kecamatan	020. Damar Sembuluh
Aktif	23
Tidak Aktif	3
Jumlah	27
Kecamatan	021. Darajat Raya
Aktif	13
Tidak Aktif	0
Jumlah	13
Kecamatan	030. Hontjo
Aktif	14
Tidak Aktif	0
Jumlah	14
Kecamatan	001. Damar Sembuluh
Aktif	11
Tidak Aktif	2
Jumlah	13

Kecamatan	040. Seruyan Tengah
Aktif	21
Tidak aktif	7
Jumlah	28
Kecamatan	041. Bahau Ampor
Aktif	4
Tidak aktif	0
Jumlah	4
Kecamatan	050. Seruyan Hilir
Aktif	4
Tidak aktif	7
Jumlah	11
Kecamatan	051. Suling Tampan
Aktif	3
Tidak aktif	0
Jumlah	3
Kecamatan	Seruyan 2012
Aktif	153
Tidak aktif	22
Jumlah	175
Kecamatan	2011
Aktif	121
Tidak Aktif	41
Jumlah	162

Source: Kabupaten Seruyan Website 2019

## B. Number of UKM non-BPR / LKM UKM

Small business is a stand-alone productive economic business opportunity, carried out by individuals or business entities that are not subsidiaries or not branches of companies and are owned, controlled, or become part of either directly or indirectly from medium-sized businesses or large businesses. Meanwhile medium-sized businesses are productive economic enterprises that are independent and carried out by individuals or business entities that are not subsidiaries or branches of companies that are owned, controlled, or become part of either directly or indirectly with small businesses or large businesses with total net assets or annual sales proceeds. This indicator is calculated by calculating the number of active non-BPR / UKM. In 2009 the number was recorded at 1,262. In 2010 it was recorded as 0 and in 2011 it rose very significantly to 0.162 and then rose again to 12,910 in 2012. The following is table of the number of UKM non BPR/ LKM UKM from 2009 to 2012 in Seruyan District.

**Figure 2.6**

Jumlah UKM non BPR/LKM UKM Tahun 2009 – 2012

No.	1
Uraian	Jumlah UKM non BPR/LKM UKM
2009	1.262
2010	0
2011	0.162
2012	12.910

*Source: Kabupaten Seruyan Website 2019*

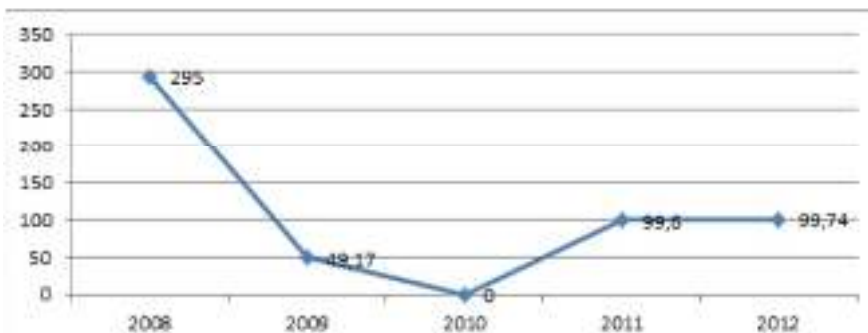
### C. Micro and Small Businesses

This indicator is to see the percentage of micro and small businesses out of the total number of UKM in Seruyan Regency. This indicator is calculated by calculating the number of micro and small businesses divided by the total number of UKM multiplied by 100%.

In 2008 the number of micro and small business was recorded at 295%. In 2009 it dropped to 49.17%, in 2010 it dropped very significantly to 0%, then in 2011 it rose significantly to 99.6% and in 2012 it also experienced a slight increase of 99.74 %. The following is a picture of the number of micro and small businesses in Seruyan Regency from 2008 to 2012.

**Figure 2.7**

Usaha Mikro dan Kecil Tahun 2008 - 2012 (%)



*Source: Kabupaten Seruyan Website 2019*

#### 2.4. Organizational Structure of the Seruyan DISDIKPORA badminton division

Badminton division in DISDIKPORA Seruyan is an organization that manage under youth and sport office of DISDIKPORA Seruyan, badminton division located in Kuala Pembuang city in Seruyan Regency, Kalimantan Tengah.

Badminton division established in 2017 in order to join pekan olahraga provinsi which will be held in 2018. Badminton division has aim to increase the achievement for Seruyan regency since its never manage well before because lack of support wheter from society and government. Due to its existence, badminton division has achieve many achievement since its established in 2017 until now, that's why the DISDIKPORA Seruyan keep continuing to manage badminton division even the pekan olahraga provinsi has ended.

Furthermore, badminton division in kabupaten seruyan attract so many attention from society in Seruyan Regency because badminton division has clear aims and give opportunities to those who excel in badminton to develept their talent which is guided by badminton division. Badminton division also give high reward to those who get the title in championship such as scholarship and allowance. Therefore, badminton division also provide all the facilities and infastucure for athlete to practice easily as we know that facilities and infrastucture is the one of some factors that athletes's needs to practice better in order to become national even international player.

Badminton division in DISDIKPORA Seruyan is analyzed from the aspect of guidance, the organization condition, achievements and infrastructure facilities of the badminton club, which has a reasonably good consistency in the achievement development program despite its presence in this small town in Central Kalimantan Province precisely in Kuala Pembuang city.

Commented [G1]: Inserted: ,

Commented [G2]: Deleted:spec

Figure 2.8  
DISDIKPORA Seruyan Organizational Structure



Source: Kabupaten Seruyan Website 2019



In Article 25 sub 8 of Law Number 7 the Year 2008 about Organization And Local Agencies Management in Seruyan District. The Seruyan District Education, Youth and Sports Service has the task of carrying out the authority of decentralization and deconcentration tasks in the fields of education, youth, and sports. To carry out the functions referred to in Article 25, the Office of Education, Youth and Sports organizes functions:

1. Technical policy formulation in the framework of planning the development and development of education, youth, and sports following the policies stipulated by the Regent based on laws and regulations.
2. Development of primary education and special education, secondary and tertiary education, non-formal and informal education.
3. The implementation of youth development and development policies includes coordination, institutions, productivity and development programs for children, youth and youth.
4. The implementation of policies for fostering and developing sports that include the organization of surveillance, talent development, improving the achievement and coordination of sports activities.
5. Formulation of planning policies, utilization of controls and evaluation of infrastructure, facilities for education, youth, and sports.
6. Drafting of the implementation of licensing policies or recommendations in the field of youth and sports activities.
7. Guidance, service, supervision, control, monitoring, evaluation and reporting of the implementation of education, youth, and sports. Also formal business affairs implementation.

The badminton division's achievement development program does not have a qualified organization. The badminton division has a person in charge, a coordinator, a head coach, and

two assistant coaches. Following is the description of the tasks that must be carried out by the management of the Seruyan DISDIKPORA badminton division during their active period of office.

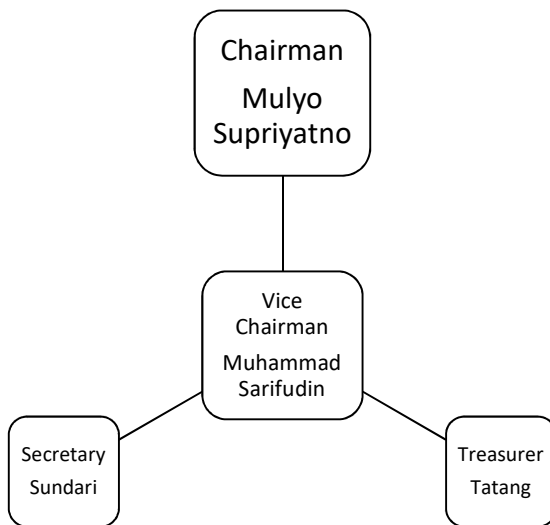
The coaching pattern has two aspects that must be considered, and the first is training that is adapted to the child's growth and development. Coaching patterns based on child growth and development include:

1. Exercise from sports from specialization must be adjusted to the growth and development of athletes.
2. Attention must be focused on muscle groups, flexibility of joints, stability, and activation of body members, which are related to one of the branch requirements specialization sports,
3. The development of functional and morphological abilities to the highest level that will be needed to build high levels of technical skills and tactics efficiently.
4. The development of mastery of skills is an essential requirement needed to enter the stage of specialization and achievement
5. The principle of developing the mastery of techniques and skills must be based on the fact that all of them are interdependent.

Badminton athletes in the badminton division as subjects and objects of achievement training are demanded by professionals and do their best in carrying out activities as a division of badminton. Athletes are always monitored by coaches every day, both during training and outside of training. The task of a Seruyan DISDIKPORA badminton division athlete.

- 1) Practice, compete and study earnestly for the sake of good name sports district of Seruyan.
- 2) Willing to obey the rules and regulations in the badminton division of Seruyan district.
- 3) Willing to be returned to the area if the results of the coach's evaluation have not improved.

**Table 2.4**  
**Badminton Division Organizational Structure**



*Source: Kabupaten Seruyan Website 2019*

**Table 2.4****List of Athletes in Badminton Division**

No	Athlete's Name	Gender	Adress
1.	Hanjian Listianto	Male	Kuala Pembuang
2.	Ahmad Ruspianor	Male	Kuala Pembuang
3.	Herdyanor	Male	Kuala Pembuang
4.	Ryan Hanggarisma	Male	Kuala Pembuang
5.	Rizki Ubay	Male	Kuala Pembuang
6.	Gilang Rizki Aji	Male	Kuala Pembuang
7.	Rizki Rianto	Male	Kuala Pembuang
8.	Sundari	Female	Kuala Pembuang
9.	Risma Dewi	Female	Kuala Pembuang
10.	Nurseruyani Pratiwi	Female	Kuala Pembuang
11.	Tasa Fara	Female	Kuala Pembuang
12.	Ahmad Lianto	Male	Kuala Pembuang
13.	Risa Desmita	Female	Kuala Pembuang
14.	Rizki Muryanto	Male	Kuala Pembuang
15.	Listiana	Female	Kuala Pembuang
16.	Ibnu Zuhdi	Male	Kuala Pembuang
18.	Nanda Saputra	Male	Kuala Pembuang
19.	Jonathan	Male	Kuala Pembuang
20.	Khairullah	Male	Kuala Pembuang
21.	Syahrudinmur	Male	Kuala Pembuang
22.	Meta Riani	Female	Kuala Pembuang
23.	Abdul Kamar	Male	Kuala Pembuang

*Source: Badminton Division DISDIKPORA Seruyan 2019*

**Figure 2.9**  
**DISDIKPORA Seruyan**



*Source: Personal Documentaton 2019*

**Figure 2.10**  
**Badminton Division Athletes**



*Source: Badminton Division DISDIKPORA Seruyan 2019*