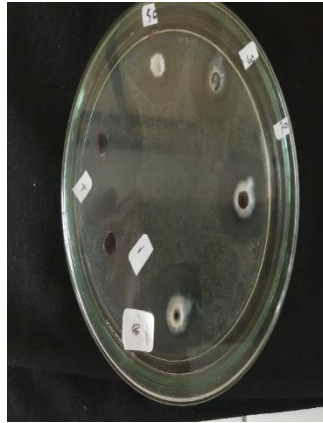


LAMPIRAN

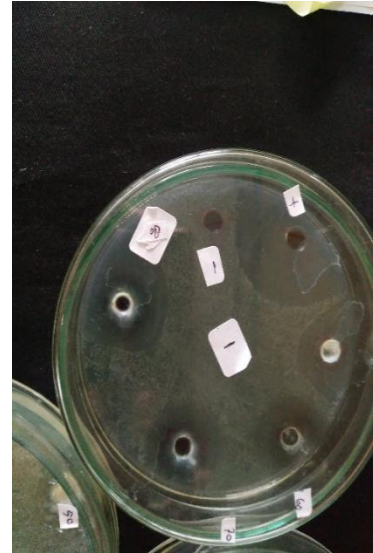
Lampiran hasil uji efektivitas minyak atsiri nilam pada bakteri



Replikasi ke 1



Replikasi ke 2



Replikasi ke 3

Lampiran. Deskriptif

Descriptives ^a				Statistic	Std. Error	
Hasil Perhitungan	Konsentrasi					
	Konsentrasi 50%	Mean		17.2000	.10000	
		95% Confidence Interval for Mean	Low er Bound	16.7697		
			Upper Bound	17.6303		
		5% Trimmed Mean		.		
		Median		17.3000		
		Variance		.030		
		Std. Deviation		.17321		
		Minimum		17.00		
		Maximum		17.30		
		Range		.30		
		Interquartile Range		.		
		Skew ness		-1.732	1.225	
		Kurtosis		.	.	
		Konsentrasi 60%	Mean		12.3233	5.51249
			95% Confidence Interval for Mean	Low er Bound	-11.3950	
Upper Bound	36.0417					
5% Trimmed Mean			.			
Median			17.6700			
Variance			91.163			
Std. Deviation			9.54791			
Minimum			1.30			
Maximum			18.00			
Range			16.70			
Interquartile Range			.			
Skew ness			-1.730	1.225		
Kurtosis			.	.		
Konsentrasi 70%	Mean			19.8667	.43333	
	95% Confidence Interval for Mean		Low er Bound	18.0022		
		Upper Bound	21.7311			
	5% Trimmed Mean		.			
	Median		20.3000			
	Variance		.563			
	Std. Deviation		.75056			
	Minimum		19.00			
	Maximum		20.30			
	Range		1.30			
	Interquartile Range		.			
	Skew ness		-1.732	1.225		
	Kurtosis		.	.		
	Konsentrasi 80%	Mean		21.5233	.26996	
		95% Confidence Interval for Mean	Low er Bound	20.3618		
Upper Bound			22.6849			
5% Trimmed Mean			.			
Median			21.6700			
Variance			.219			
Std. Deviation			.46758			
Minimum			21.00			
Maximum			21.90			
Range			.90			
Interquartile Range			.			
Skew ness			-1.273	1.225		
Kurtosis			.	.		

a. Hasil Perhitungan is constant w hen Konsentrasi = Antibiotik. It has been omitted.

Lampiran Uji Normalitas

Tests of Normality^a

Konsentrasi	Kolmogorov-Smirnov ^a			Shapiro-Wilk		
	Statistic	df	Sig.	Statistic	df	Sig.
Hasil Perhitungan						
Konsentrasi 50%	.385	3	.	.750	3	.000
Konsentrasi 60%	.379	3	.	.765	3	.033
Konsentrasi 70%	.385	3	.	.750	3	.000
Konsentrasi 80%	.290	3	.	.926	3	.475

a. Lilliefors Significance Correction

b. Hasil Perhitungan is constant when Konsentrasi = Antibiotik. It has been omitted.

Lampiran Kruskal-Wallis Test

Ranks

Konsentrasi	N	Mean Rank
Hasil Perhitungan		
Konsentrasi 50%	3	3.00
Konsentrasi 60%	3	4.00
Konsentrasi 70%	3	8.00
Konsentrasi 80%	3	11.00
Antibiotik	3	14.00
Total	15	

Test Statistics^{a,b}

	Hasil Perhitungan
Chi-Square	13.040
df	4
Asymp. Sig.	.011

a. Kruskal Wallis Test

b. Grouping Variable: Konsentrasi