

LAMPIRAN

LAMPIRAN 1

Hasil Uji Determinasi Tanaman



LABORATORIUM BIOLOGI

FAKULTAS MIPA
UNIVERSITAS AHMAD DAHLAN

Jl. Prof. Dr. Soepomo, Yogyakarta Telp. (0274) 563515

SURAT KETERANGAN

Nomor : 006/Lab.Bio/B/1/2019

Yang bertanda tangan di bawah ini Kepala Laboratorium Biologi Universitas Ahmad Dahlan menerangkan bahwa :

Nama : Nilla Nur Indah W
NIM : 20150350073
Prodi, PT : Farmasi, Universitas Muhammadiyah Yogyakarta

Telah melakukan determinasi tanaman dengan bimbingan Hery Setiyawan, M.Si di Laboratorium Biologi Universitas Ahmad Dahlan, pada tanggal 21 Januari 2019

Tanaman tersebut adalah :
Hibiscus sabdariffa L.

Demikian Surat Keterangan ini untuk dapat dipergunakan seperlunya.

Yogyakarta, 21 Januari 2019
Kepala Laboratorium Biologi

Drs. Hadi Sasongko, M.Si.



1b - 2b - 3b - 4b - 6b - 7b - 9b - 10b - 11b - 12b - 13b - 14a - 15a - 109b - 119b - 120b -
128b - 129b - 135b - 136b - 139b - 140b - 142b - 143a - 144a Malvaceae

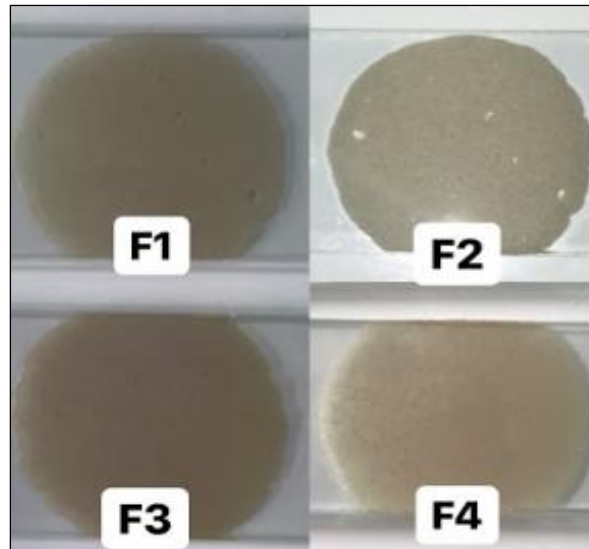
1a - 2b - 3a Hibiscus

1b - 2b - 4a *Hibiscus sabdarifa* L

Flora of Java (Steenis, 1958)

LAMPIRAN 2

Hasil Uji Homogenitas Kriml Ekstrak Etanol Bunga Rosella Ungu



Keterangan: F1 = Formula 1

F2 = Formula 2

F3 = Formula 3

F4 = Formula 4

Hasil Pengukuran pH

Replikasi	Formula 1	Formula 2	Formula 3	Formula 4
1	4,93	5,76	5,39	4,77
2	4,97	5,66	5,46	4,83
3	4,80	5,71	5,48	4,98

Hasil Uji Daya Lekat

Replikasi	Formula 1	Formula 2	Formula 3	Formula 4
1	5,89 detik	13,95 detik	13,37 detik	7,21 detik
2	6,55 detik	14,62 detik	13,11 detik	7,86 detik
3	6,89 detik	14,53 detik	13,59 detik	8,20 detik

Hasil Uji Daya Sebar

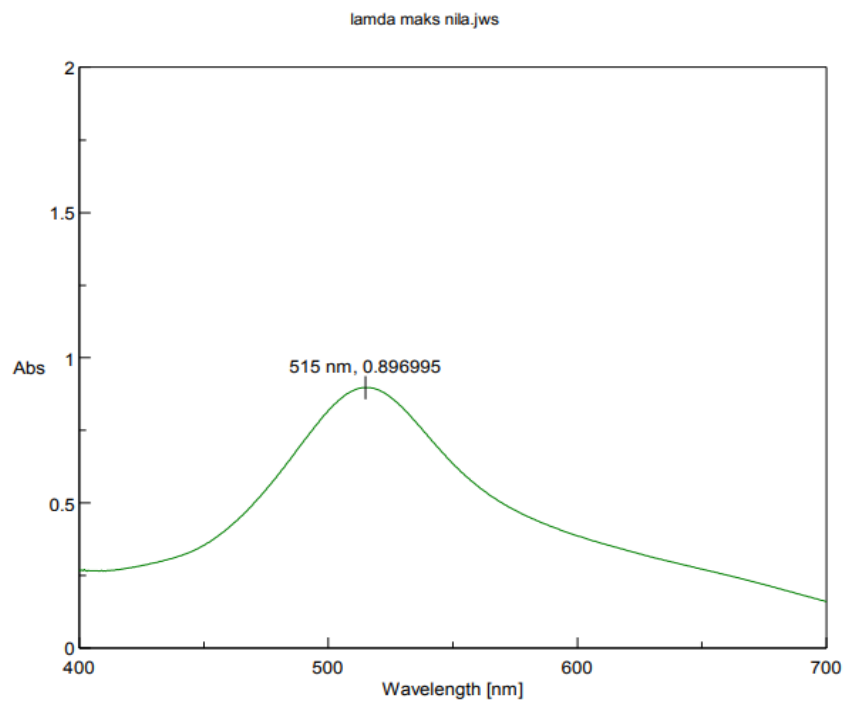
Replikasi	Formula 1	Formula 2	Formula 3	Formula 4
1	4,9 cm	5,5 cm	5 cm	5 cm
2	5 cm	5,8 cm	5,2 cm	5,2 cm
3	5 cm	7 cm	5,6 cm	5,4 cm

LAMPIRAN 3

Preparasi Sampel Uji Aktivitas Antioksidan



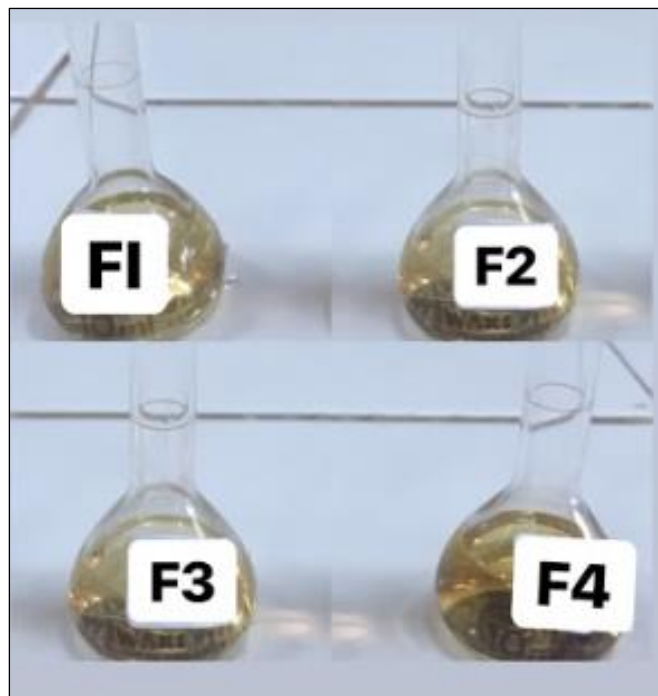
Hasil Pengukuran Panjang Gelombang Maksimal (DPPH)



Hasil Absorbansi Menggunakan Spektrofotometer UV-Vis

Replikasi	DPPH	Rutin	Ekstrak	F1	F2	F3	F4
1	0,896995	0,0732	0,7225	0,6717	0,5427	0,4345	0,5607
2	0,896995	0,0734	0,722	0,6726	0,5443	0,4313	0,558
3	0,896995	0,0733	0,7229	0,6725	0,5444	0,4273	0,561
4	0,896995	0,0735	0,7228	0,6722	0,5469	0,4294	0,5601
5	0,896995	0,0726	0,7231	0,6719	0,5449	0,4275	0,5611
6	0,896995	0,0729	0,7232	0,672	0,545	0,4345	0,5654

Preparasi Sampel Uji Aktivitas Antioksidan



LAMPIRAN 4

Hasil Perhitungan Nilai Persentase Inhibisi

Replikasi	Sampel					
	Rutin	Ekstrak	F1	F2	F3	F4
1	91,83%	19,45%	25,11%	39,49%	51,56%	37,49%
2	91,81%	19,50%	25,01%	39,31%	51,91%	37,79%
3	91,82%	19,40%	25,02%	39,30%	52,36%	37,45%
4	92%	19,41%	25,06%	39,02%	52,12%	37,55%
5	91,90%	19,38%	25,09%	39,25%	52,34%	37,44%
6	91,87%	19,37%	25,08%	39,24%	51,56%	36,96%
Standar Deviasi	0,000353	0,000445	0,000362	0,001383	0,003294	0,002474

$$\% \text{ Aktivitas Antioksidan: } \frac{\text{Abs.kontrol} - \text{Abs.perlakuan}}{\text{Abs.kontrol}} \times 100$$

1 Rutin

$$\% \text{ Inhibisi : } \frac{0,896995 - 0,0734}{0,896995} \times 100 = 91,81 \%$$

2 Ekstrak

$$\% \text{ Inhibisi : } \frac{0,896995 - 0,7225}{0,896995} \times 100 = 19,45 \%$$

3 Formula 1

$$\% \text{ Inhibisi : } \frac{0,896995 - 0,6722}{0,896995} \times 100 = 25,06 \%$$

4 Formula 2

$$\% \text{ Inhibisi : } \frac{0,896995 - 0,5449}{0,896995} \times 100 = 39,25 \%$$

5 Formula 3

$$\% \text{ Inhibisi : } \frac{0,896995 - 0,4313}{0,896995} \times 100 = 51,91 \%$$

6 Formula 4

$$\% \text{ Inhibisi : } \frac{0,896995 - 0,5610}{0,896995} \times 100 = 37,55 \%$$

LAMPIRAN 5

Hasil Analisis Statistika

1 Uji Normalitas

Tests of Normality						
Kelompok	Kolmogorov-Smirnov ^a			Shapiro-Wilk		
	Statistic	df	Sig.	Statistic	df	Sig.
Inhibisi Rutin	.252	6	.200*	.899	6	.368
Ekstrak	.235	6	.200*	.912	6	.451
Formula 1	.186	6	.200*	.932	6	.595
Formula 2	.259	6	.200*	.928	6	.566
Formula 3	.208	6	.200*	.950	6	.744
Formula 4	.324	6	.049	.879	6	.262

*. This is a lower bound of the true significance.
a. Lilliefors Significance Correction

2 Uji ANOVA

ANOVA

Inhibisi					
	Sum of Squares	df	Mean Square	F	Sig.
Between Groups	20296.899	5	4059.380	104645.7	.000
Within Groups	1.164	30	.039		
Total	20298.062	35			

3 Uji Homogenitas

Homogeneous Subsets

Inhibisi							
Tukey HSD ^a							
Kelompok	N	Subset for alpha = .05					
		1	2	3	4	5	6
Ekstrak	6	19.4183					
Formula 1	6		25.0617				
Formula 4	6			37.4467			
Formula 2	6				39.2683		
Formula 3	6					52.1417	
Rutin	6						91.8383
Sig.		1.000	1.000	1.000	1.000	1.000	1.000

Means for groups in homogeneous subsets are displayed.

a. Uses Harmonic Mean Sample Size = 6.000.

4 Uji Kruskal-Wallis

Kruskal-Wallis Test

Ranks

	Kelompok	N	Mean Rank
Inhibisi	Rutin	6	33.50
	Ekstrak	6	3.50
	Formula 1	6	9.50
	Formula 2	6	21.50
	Formula 3	6	27.50
	Formula 4	6	15.50
	Total	36	

5 Uji Man-Whitney

a. Rutin dan formula 1

Ranks

	Kelompok	N	Mean Rank	Sum of Ranks
Inhibisi	Rutin	6	9.50	57.00
	Formula 1	6	3.50	21.00
	Total	12		

Test Statistics(b)

	Inhibisi
Mann-Whitney U	.000
Wilcoxon W	21.000
Z	-2.882
Asymp. Sig. (2-tailed)	.004
Exact Sig. [2*(1-tailed Sig.)]	.002(a)

a Not corrected for ties.

b Grouping Variable: Kelompok

b. Rutin dan formula 2

Ranks

Kelompok	N	Mean Rank	Sum of Ranks
Inhibisi Rutin	6	9.50	57.00
Formula 2	6	3.50	21.00
Total	12		

Test Statistics(b)

	Inhibisi
Mann-Whitney U	.000
Wilcoxon W	21.000
Z	-2.882
Asymp. Sig. (2-tailed)	.004
Exact Sig. [2*(1-tailed Sig.)]	.002(a)

a Not corrected for ties.

b Grouping Variable: Kelompok

c. Rutin dan formula 3

Ranks

Kelompok	N	Mean Rank	Sum of Ranks
Inhibisi Rutin	6	9.50	57.00
Formula 3	6	3.50	21.00
Total	12		

Test Statistics(b)

	Inhibisi
Mann-Whitney U	.000
Wilcoxon W	21.000
Z	-2.882
Asymp. Sig. (2-tailed)	.004
Exact Sig. [2*(1-tailed Sig.)]	.002(a)

- a Not corrected for ties.
- b Grouping Variable: Kelompok

d. Rutin dan formula 4

Ranks

	Kelompok	N	Mean Rank	Sum of Ranks
Inhibisi	Rutin	6	9.50	57.00
	Formula 4	6	3.50	21.00
	Total	12		

Test Statistics(b)

	Inhibisi
Mann-Whitney U	.000
Wilcoxon W	21.000
Z	-2.882
Asymp. Sig. (2-tailed)	.004
Exact Sig. [2*(1-tailed Sig.)]	.002(a)

- a Not corrected for ties.
- b Grouping Variable: Kelompok

LAMPIRAN 6

Hasil Pengecekan Plagiasi

Tri Indriani Dw turnitin

ORIGINALITY REPORT

13%	12%	1%	7%
SIMILARITY INDEX	INTERNET SOURCES	PUBLICATIONS	STUDENT PAPERS

PRIMARY SOURCES

1	media.neliti.com Internet Source	3%
2	id.123dok.com Internet Source	3%
3	journal.unpad.ac.id Internet Source	2%
4	repository.uinjkt.ac.id Internet Source	2%
5	Submitted to Udayana University Student Paper	1%
6	alamipedia.com Internet Source	1%
7	docplayer.info Internet Source	1%
8	eprints.umm.ac.id Internet Source	1%