

LAMPIRAN

Lampiran 1
Nama Perusahaan Sampel

No	Nama Perusahaan	Kode Perusahaan	Tahun
1	PT Cahayasakti Investindo Sukses Tbk	CSIS	2017
2	PT First Indo American Leasing Tbk	FINN	2017
3	PT Forza Land Indonesia Tbk	FORZ	2017
4	PT Buyung Poetra Sembada Tbk	HOKI	2017
5	PT Jasa Armada Indonesia Tbk	IPCM	2017
6	PT Kirana Megatara Tbk	KMTR	2017
7	PT Mark Dynamic Indonesia Tbk	MARK	2017
8	PT M Cash Integrasi Tbk	MCAS	2017
9	PT Megapower Makmur Tbk	MPOW	2017
10	PT Ayana Land Internasional Tbk	NASA	2017
11	PT Nusantara Pelabuhan Handal Tbk	PORT	2017
12	PT Terregra Asia Energy Tbk	TGRA	2017
13	PT Integra Indocabinet Tbk	WOOD	2017
14	PT Aneka Gas Industri Tbk	AGII	2016
15	PT Mitra Pemuda Tbk	MTRA	2016
16	PT Protech Mitra Perkasa Tbk	OASA	2016
17	PT Paramita Bangun Sarana Tbk	PBSA	2016
18	PT Prodia Widyahusada Tbk	PRDA	2016
19	PT Sillo Maritime Perdana Tbk	SHIP	2016
20	PT Waskita Beton Precast Tbk	WSBP	2016
21	PT Anabatic Technologies Tbk	ATIC	2015
22	PT Bank Harda Internasional Tbk	BBHI	2015
23	PT Bank Yudha Bhakti Tbk	BBYB	2015
24	PT Garuda Metalindo Tbk	BOLT	2015
25	PT Puradelta Lestari Tbk	DMAS	2015
26	PT Mega Manunggal Property Tbk	MMLP	2015
27	PT Bank Agris Tbk	AGRS	2014
28	PT Blue Bird Tbk	BIRD	2014
29	PT Batavia Prosperindo Internasional Tbk	BPII	2014
30	PT Chitose Internasional Tbk	CINT	2014
31	PT Link Net Tbk	LINK	2014
32	PT Magna Investma Mandiri Tbk	MGNA	2014
33	PT Soechi Lines Tbk	SOCI	2014

No	Nama Perusahaan	Kode Perusahaan	Tahun
34	PT Siantara Propertindo Tbk	TARA	2014
35	Wijaya Karya Beton	WTON	2014
36	PT Acset Indonusa Tbk	ACST	2013
37	PT Arita Prima Indonesia Tbk	APII	2013
38	PT Bank Maspion Indonesia Tbk	BMAS	2013
39	PT Dyandra Media Internasional Tbk	DYAN	2013
40	PT Multi Polar Technology Tbk	MLPT	2013
41	PT Bank Nationalnobu Tbk	NOBU	2013
42	PT Nusa Raya Cipta Tbk	NRCA	2013
43	PT Siloam International Hospitals Tbk	SILO	2013
44	PT Sawit Sumbermas Sarana Tbk	SSMS	2013
45	Trans Power Marine Tbk	TPMA	2013
46	PT Victoria Investma Tbk	VICO	2013
47	Tri Banyan Tirta Tbk	ALTO	2012
48	Adi Sarana Armada Tbk	ASSA	2012
49	PT Bekasi Fajar Industrial Estate Tbk	BEST	2012
50	Gading Development Tbk	GAMA	2012
51	PT Kobexindo Tractors Tbk	KOBX	2012
52	MNC Sky Vision Tbk	MSKY	2012
53	Pelayaran Nelly Dwi Putri Tbk	NELY	2012
54	Provident Agro Tbk	PALM	2012
55	Supra Boga Lestari Tbk	RANC	2012
56	PT Waskita Karya (Persero) Tbk	WSKT	2012
57	City Retail Development Tbk	NIRO	2012

Lampiran 2
Perhitungan Variabel Intellectual Capital

No	Kode Perusahaan	Tahun	Kriteria	84	ICD
1	CSIS	2017	35	84	41.66666667
2	FINN	2017	46	84	54.76190476
3	FORZ	2017	43	84	51.19047619
4	HOKI	2017	55	84	65.47619048
5	IPCM	2017	62	84	73.80952381
6	KMTR	2017	57	84	67.85714286
7	MARK	2017	45	84	53.57142857
8	MCAS	2017	63	84	75
9	MPOW	2017	44	84	52.38095238
10	NASA	2017	68	84	80.95238095
11	PORT	2017	34	84	40.47619048
12	TGRA	2017	24	84	28.57142857
13	WOOD	2017	55	84	65.47619048
14	AGII	2016	62	84	73.80952381
15	MTRA	2016	39	84	46.42857143
16	OASA	2016	27	84	32.14285714
17	PBSA	2016	40	84	47.61904762
18	PRDA	2016	56	84	66.66666667
19	SHIP	2016	42	84	50
20	WSBP	2016	73	84	86.9047619
21	ATIC	2015	59	84	70.23809524
22	BBHI	2015	41	84	48.80952381
23	BBYB	2015	49	84	58.33333333
24	BOLT	2015	45	84	53.57142857
25	DMAS	2015	45	84	53.57142857
26	MMLP	2015	41	84	48.80952381
27	AGRS	2014	44	84	52.38095238
28	BIRD	2014	49	84	58.33333333
29	BPII	2014	25	84	29.76190476
30	CINT	2014	47	84	55.95238095
31	LINK	2014	43	84	51.19047619
32	MGNA	2014	40	84	47.61904762
33	SOCI	2014	36	84	42.85714286
34	TARA	2014	26	84	30.95238095

No	Kode Perusahaan	Tahun	Kriteria	84	ICD
35	WTON	2014	52	84	61.9047619
36	ACST	2013	34	84	40.47619048
37	APII	2013	27	84	32.14285714
38	BMAS	2013	36	84	42.85714286
39	DYAN	2013	37	84	44.04761905
40	MLPT	2013	33	84	39.28571429
41	NOBU	2013	51	84	60.71428571
42	NRCA	2013	35	84	41.66666667
43	SILO	2013	40	84	47.61904762
44	SSMS	2013	40	84	47.61904762
45	TPMA	2013	34	84	40.47619048
46	VICO	2013	33	84	39.28571429
47	ALTO	2012	30	84	35.71428571
48	ASSA	2012	56	84	66.66666667
49	BEST	2012	34	84	40.47619048
50	GAMA	2012	37	84	44.04761905
51	KOBX	2012	37	84	44.04761905
52	MSKY	2012	40	84	47.61904762
53	NELY	2012	19	84	22.61904762
54	PALM	2012	21	84	25
55	RANC	2012	27	84	32.14285714
56	WSKT	2012	51	84	60.71428571
57	NIRO	2012	20	84	23.80952381

Lampiran 3
Perhitungan Variabel Kepemilikan Institusional

No	Kode Perusahaan	Tahun	Jumlah Saham Institusi Lain	Jumlah Saham Beredar	INST
1	CSIS	2017	272571.4	1307000	0.20854736
2	FINN	2017	57250	57250	1
3	FORZ	2017	1125000	1562500	0.72
4	HOKI	2017	1571428.57	2350000	0.668693009
5	IPCM	2017	4397958.5	5284811.1	0.832188401
6	KMTR	2017	531000	1000000	0.531
7	MARK	2017	599047.711	760000.062	0.788220608
8	MCAS	2017	572836	867933.3	0.660000025
9	MPOW	2017	457517.641	816997.053	0.559999133
10	NASA	2017	8001000	11001000	0.727297518
11	PORT	2017	223708.389	281349.199	0.795127158
12	TGRA	2017	1342000	2750000	0.488
13	WOOD	2017	5000000	6250000	0.8
14	AGII	2016	2009891	3066660	0.655400664
15	MTRA	2016	594000	770000	0.771428571
16	OASA	2016	240600	358600	0.670942554
17	PBSA	2016	1308660.4	1500000	0.872440267
18	PRDA	2016	703125	937500	0.75
19	SHIP	2016	2000000	2500000	0.8
20	WSBP	2016	15816694.5	26361157.53	0.600000001
21	ATIC	2015	1061352.27	1875000	0.566054542
22	BBHI	2015	2651961	3650000	0.726564658
23	BBYB	2015	2289756.36	2515160	0.910381986
24	BOLT	2015	1350000	2343750	0.576
25	DMAS	2015	43378300	48198111.1	0.9
26	MMLP	2015	4291678.7	5714285	0.751043866
27	AGRS	2014	3596793.93	4235518.9	0.84919794
28	BIRD	2014	930000	2502100	0.371687782
29	BPII	2014	513252.2	514010.9	0.998523961
30	CINT	2014	696500	1000000	0.6965
31	LINK	2014	2046845.38	3042649.384	0.672718123
32	MGNA	2014	277500	1000000	0.2775

No	Kode Perusahaan	Tahun	Jumlah Saham Institusi Lain	Jumlah Saham Beredar	INST
33	SOCI	2014	5640000	7059000	0.798980025
34	TARA	2014	6010000	10010000	0.6003996
35	WTON	2014	2448914.85	8715466.6	0.280984939
36	ACST	2013	341000	500000	0.682
37	APII	2013	773340.02	1075000	0.719386065
38	BMAS	2013	2867572.5	3851000	0.744630615
39	DYAN	2013	1874818.18	4272964.279	0.438762896
40	MLPT	2013	1500000	1875000	0.8
41	NOBU	2013	3068000	4145830	0.740020695
42	NRCA	2013	1905208	2480000	0.768229032
43	SILO	2013	994100	1156100	0.859873713
44	SSMS	2013	6420000	9525000	0.674015748
45	TPMA	2013	2548118.5	2633300	0.967652185
46	VICO	2013	6088500	7350000	0.828367347
47	ALTO	2012	121500	155000	0.783870968
48	ASSA	2012	1347830	3397500	0.396712288
49	BEST	2012	6993000	9361707.25	0.746979137
50	GAMA	2012	6005000	10005000	0.6001999
51	KOBX	2012	2000000	2272500	0.880088009
52	MSKY	2012	5647360	7063886	0.799469301
53	NELY	2012	1995000	2350000	0.84893617
54	PALM	2012	4268835	4927986	0.866243329
55	RANC	2012	1176480	1564487.5	0.751990668
56	WSKT	2012	616446.5	9632236	0.063998276
57	NIRO	2012	15245000.5	18000000	0.846944472

Lampiran 4**Perhitungan Variabel Earning Per Share (EPS)**

No	Kode Perusahaan	Tahun	EPS
1	CSIS	2017	29.9
2	FINN	2017	133
3	FORZ	2017	6.26
4	HOKI	2017	27
5	IPCM	2017	201.83
6	KMTR	2017	321.42
7	MARK	2017	3137.37
8	MCAS	2017	552
9	MPOW	2017	145
10	NASA	2017	0.93
11	PORT	2017	465.29
12	TGRA	2017	0.07
13	WOOD	2017	43.31
14	AGII	2016	26.2
15	MTRA	2016	46
16	OASA	2016	280
17	PBSA	2016	147.4
18	PRDA	2016	78.7
19	SHIP	2016	0.071
20	WSBP	2016	21.14
21	ATIC	2015	40.26
22	BBHI	2015	5.41
23	BBYB	2015	12.52
24	BOLT	2015	782.905
25	DMAS	2015	22.23
26	MMLP	2015	382
27	AGRS	2014	4.21
28	BIRD	2014	333
29	BPII	2014	92.39
30	CINT	2014	60
31	LINK	2014	119
32	MGNA	2014	12.71
33	SOCI	2014	0.171131442
34	TARA	2014	0.69
35	WTON	2014	29.72

No	Kode Perusahaan	Tahun	EPS
36	ACST	2013	131
37	APII	2013	150
38	BMAS	2013	20
39	DYAN	2013	22
40	MLPT	2013	38
41	NOBU	2013	1.64
42	NRCA	2013	574
43	SILO	2013	50.46
44	SSMS	2013	726
45	TPMA	2013	0.041581
46	VICO	2013	15.71
47	ALTO	2012	25.94
48	ASSA	2012	6
49	BEST	2012	50.63
50	GAMA	2012	3.28
51	KOBX	2012	0.094
52	MSKY	2012	10.5
53	NELY	2012	72.18
54	PALM	2012	26
55	RANC	2012	32
56	WSKT	2012	9.555
57	NIRO	2012	53.86

Lampiran 5
Perhitungan Variabel Ukuran Perusahaan

No	Kode Perusahaan	Tahun	Total Aset	LN SIZE
1	CSIS	2017	252131026.5	19.34545946
2	FINN	2017	866961337.8	20.58050494
3	FORZ	2017	427599878.3	19.87369845
4	HOKI	2017	370245134.3	19.72967587
5	IPCM	2017	598370195	20.20972018
6	KMTR	2017	3806822723	22.06006075
7	MARK	2017	170937642.5	18.95680938
8	MCAS	2017	15443423.63	16.55269382
9	MPOW	2017	350204022	19.67402646
10	NASA	2017	890711784.3	20.60753146
11	PORT	2017	2051323698	21.44175113
12	TGRA	2017	278986924.4	19.44667547
13	WOOD	2017	3081874210	21.84880376
14	AGII	2016	4953451000	22.32335034
15	MTRA	2016	177261556.5	18.99313692
16	OASA	2016	14439716.36	16.48549305
17	PBSA	2016	756763554.3	20.44456142
18	PRDA	2016	577866028.6	20.17485262
19	SHIP	2016	419663390	19.8549635
20	WSBP	2016	4332409010	22.18938958
21	ATIC	2015	1973702382	21.403177
22	BBHI	2015	2020526675	21.42662404
23	BBYB	2015	2691128729	21.71322654
24	BOLT	2015	911610972	20.63072389
25	DMAS	2015	7602826935	22.75178598
26	MMLP	2015	2138502023	21.48337143
27	AGRS	2014	2509281000	21.64326209
28	BIRD	2014	5011914637	22.33508384
29	BPII	2014	279019640.7	19.44679273
30	CINT	2014	262915458.7	19.38734309
31	LINK	2014	3225204000	21.89426204
32	MGNA	2014	338763849.9	19.64081381
33	SOCI	2014	4931838557	22.31897769
34	TARA	2014	969040858	20.69181733
35	WTON	2014	2917400751	21.7939589

No	Kode Perusahaan	Tahun	Total Aset	LN SIZE
36	ACST	2013	754771051.4	20.44192502
37	APII	2013	178579706.5	19.00054559
38	BMAS	2013	3403282701	21.9480063
39	DYAN	2013	1418453269	21.07283287
40	MLPT	2013	1004245994	20.72750284
41	NOBU	2013	1217521000	20.92008266
42	NRCA	2013	835885586.6	20.5440023
43	SILO	2013	1586226018	21.18462346
44	SSMS	2013	2113611112	21.47166375
45	TPMA	2013	760328253.8	20.44926081
46	VICO	2013	772642322.2	20.46532679
47	ALTO	2012	213200517.8	19.17774368
48	ASSA	2012	1421780986	21.07517614
49	BEST	2012	1643945423	21.22036494
50	GAMA	2012	1041748953	20.76416682
51	KOBX	2012	1253300950	20.94904667
52	MSKY	2012	3447663000	21.96096245
53	NELY	2012	304812483.8	19.53520734
54	PALM	2012	2809367920	21.75622536
55	RANC	2012	404072915.2	19.8171059
56	WSKT	2012	5116001715	22.35563906
57	NIRO	2012	2102358284	21.46632554

Lampiran 6**Perhitungan Variabel Return on Equity (ROE)**

No	Kode Perusahaan	Tahun	Laba Bersih	Equity/modal saham	ROE
1	CSIS	2017	6485106.729	121097921.8	0.053552585
2	FINN	2017	7637266.26	137118800	0.05569817
3	FORZ	2017	7819896.453	104860654.9	0.074574171
4	HOKI	2017	43399842.45	220074121.7	0.197205569
5	IPCM	2017	117064105	336734422	0.347645199
6	KMTR	2017	209920429.8	1052314350	0.199484526
7	MARK	2017	19588140.92	80619536.44	0.242970151
8	MCAS	2017	2759150.774	5608976.951	0.491916939
9	MPOW	2017	10500512	81458635	0.128906064
10	NASA	2017	166250	798908578.2	0.000208096
11	PORT	2017	93998328	620661957	0.151448509
12	TGRA	2017	164279.112	257574658.5	0.000637792
13	WOOD	2017	141081224	1430032982	0.098655923
14	AGII	2016	48007000	1714770000	0.027996174
15	MTRA	2016	25744227.34	177261556.5	0.145232998
16	OASA	2016	3038809.041	13287290.29	0.228700433
17	PBSA	2016	176885095.8	377863257.2	0.468119333
18	PRDA	2016	59024994.42	126327355.3	0.467238424
19	SHIP	2016	44484160	306705660	0.145038602
20	WSBP	2016	334369585	1330826173	0.251249631
21	ATIC	2015	80384063.15	408979747	0.196547784
22	BBHI	2015	12448871.16	291323938.1	0.042732057
23	BBYB	2015	11884323.7	274849540	0.04323938
24	BOLT	2015	115247475.2	524856509.8	0.219579015
25	DMAS	2015	964567413	6395376275	0.150822621
26	MMLP	2015	286688998.1	1447855097	0.198009455
27	AGRS	2014	12629000	371988000	0.03395002
28	BIRD	2014	713202116	1205258102	0.591742229
29	BPII	2014	30623447.6	224260852.3	0.136552801
30	CINT	2014	42154164.55	185116798.8	0.227716581
31	LINK	2014	362169000	2519068000	0.14377103
32	MGNA	2014	3813534.071	63973645.72	0.059611017
33	SOCI	2014	398265122.1	1823436293	0.218414607
34	TARA	2014	4125390.824	626999267.7	0.006579578
35	WTON	2014	241206241.5	730017769.8	0.330411466

No	Kode Perusahaan	Tahun	Laba Bersih	Equity/modal saham	ROE
36	ACST	2013	52233545.82	218211313.5	0.239371392
37	APII	2013	19622396.8	68498037.2	0.286466556
38	BMAS	2013	23654038	369897628	0.063947526
39	DYAN	2013	64951900.14	553428118.6	0.117362848
40	MLPT	2013	41228602	194311250	0.212178152
41	NOBU	2013	2796000	256086000	0.010918207
42	NRCA	2013	91862980.55	268156245	0.342572594
43	SILO	2013	51959602.53	244640798.5	0.212391403
44	SSMS	2013	561695124	466041411	1.205247239
45	TPMA	2013	80824644.96	347919076.7	0.232308748
46	VICO	2013	96700078.68	689372528.5	0.140272603
47	ALTO	2012	3242426.738	112306066.7	0.028871341
48	ASSA	2012	3242426.738	192550950.5	0.016839318
49	BEST	2012	119574660.3	894866655.7	0.133622881
50	GAMA	2012	4004220.852	620477642.3	0.006453449
51	KOBX	2012	103764230	245731620	0.422266495
52	MSKY	2012	65339000	958231000	0.068187107
53	NELY	2012	57761070.62	227518856.4	0.253873773
54	PALM	2012	24876535	1082749546	0.022975336
55	RANC	2012	21936095.15	173100159.4	0.12672487
56	WSKT	2012	171989194.1	620222360.9	0.277302472
57	NIRO	2012	108202.871	1202762049	0.000089962

Lampiran 7
Perhitungan Variabel Underpricing

No	Kode Perusahaan	Tahun	Harga IPO	Closing Price	INITIAL RETURN
1	CSIS	2017	300	450	0.5
2	FINN	2017	105	178	0.695238095
3	FORZ	2017	220	330	0.5
4	HOKI	2017	310	330	0.064516129
5	IPCM	2017	380	402	0.057894737
6	KMTR	2017	458	685	0.495633188
7	MARK	2017	250	374	0.496
8	MCAS	2017	1385	2070	0.494584838
9	MPOW	2017	200	340	0.7
10	NASA	2017	103	175	0.699029126
11	PORT	2017	535	575	0.074766355
12	TGRA	2017	200	340	0.7
13	WOOD	2017	260	280	0.076923077
14	AGII	2016	1100	1160	0.054545455
15	MTRA	2016	185	214	0.156756757
16	OASA	2016	190	322	0.694736842
17	PBSA	2016	1200	1260	0.05
18	PRDA	2016	6500	6600	0.015384615
19	SHIP	2016	140	238	0.7
20	WSBP	2016	490	540	0.102040816
21	ATIC	2015	700	725	0.035714286
22	BBHI	2015	125	129	0.032
23	BBYB	2015	115	182.81	0.589652174
24	BOLT	2015	550	825	0.5
25	DMAS	2015	210	219	0.042857143
26	MMLP	2015	585	873.16	0.492581197
27	AGRS	2014	110	187	0.7
28	BIRD	2014	6500	7450	0.146153846
29	BPII	2014	500	550	0.1
30	CINT	2014	330	550	0.666666667
31	LINK	2014	1600	2400	0.5
32	MGNA	2014	105	155	0.476190476
33	SOCI	2014	550	620	0.127272727
34	TARA	2014	106	180	0.698113208
35	WTON	2014	590	760	0.288135593

No	Kode Perusahaan	Tahun	Harga IPO	Closing Price	INITIAL RETURN
36	ACST	2013	2500	2694.23	0.077692
37	APII	2013	220	330	0.5
38	BMAS	2013	320	325	0.015625
39	DYAN	2013	350	385	0.1
40	MLPT	2013	480	720	0.5
41	NOBU	2013	375	430	0.146666667
42	NRCA	2013	850	1270	0.494117647
43	SILO	2013	9000	9438.68	0.048742222
44	SSMS	2013	670	720	0.074626866
45	TPMA	2013	230	345	0.5
46	VICO	2013	125	210	0.68
47	ALTO	2012	210	302.34	0.439714286
48	ASSA	2012	390	490	0.256410256
49	BEST	2012	170	285	0.676470588
50	GAMA	2012	105	178	0.695238095
51	KOBX	2012	400	460	0.15
52	MSKY	2012	1520	1540	0.013157895
53	NELY	2012	168	205	0.220238095
54	PALM	2012	450	470	0.044444444
55	RANC	2012	500	670	0.34
56	WSKT	2012	380	433.77	0.1415
57	NIRO	2012	105	178	0.695238095

Lampiran 9
Data Outlier

No	Nama Perusahaan	Kode Perusahaan	Tahun
1	PT Trisula Textile Industries Tbk	BELL	2017
2	PT Campina Ice Cream Industry Tbk	CAMP	2017
3	PT Alfa Energy Investma Tbk	FIRE	2017
4	PT Asuransi Jiwa Syariah Jasa Mitra Abadi Tbk	JMAS	2017
5	PT MAP Boga Adiperkasa Tbk	MAPB	2017
6	PT Bintang Oto Global Tbk	BOGA	2016
7	PT Kino Indonesia Tbk	KINO	2015
8	PT Intan Baruprana Finance Tbk	IBFN	2014
9	Toba Bara Sejahtera Tbk	TOBA	2012
10	Trisula International Tbk	TRIS	2012

Lampiran 10
Perusahaan Sampel

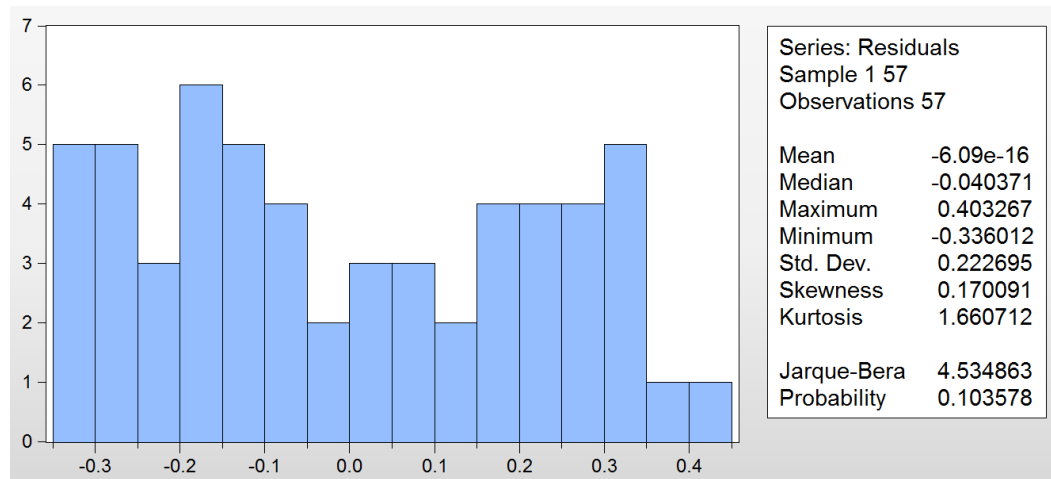
Keterangan	2012	2013	2014	2015	2016	2017	Total
Perusahaan melakukan penawaran umum perdana (IPO) di BEI periode 2012-2017	22	30	23	16	15	37	143
Perusahaan yang tidak menerbitkan laporan tahunan secara lengkap	2	1					3
Perusahaan yang tidak mengalami underpricing	6	12	10	6	3	10	47
Perusahaan yang tidak memiliki kepemilikan institusional	1	5	2	3		1	12
Perusahaan yang rugi		1	1	1	3	8	14
Total sampel	13	11	10	6	9	18	67
Data Outlier	2		1	1	1	5	10
Perusahaan Sampel	11	11	9	5	8	13	57

Lampiran 11
Statistic Deskriptif

	IR	INST	ICD	EPS	SIZE	ROE
Mean	0.342689	0.690072	49.79114	168.0526	20.66067	0.189411
Median	0.340000	0.740000	47.61905	32.00000	20.72750	0.145233
Maximum	0.700000	0.998500	86.90476	3137.370	22.75179	1.205247
Minimum	0.013158	0.064000	22.61905	0.040000	16.48549	9.00E-05
Std. Dev.	0.260320	0.188413	14.57530	440.4632	1.292414	0.194508
Skewness	0.117722	-1.255536	0.341722	5.614083	-1.027762	2.763257
Kurtosis	1.384315	4.565996	2.741628	37.69356	4.628614	14.34266
Jarque-Bera	6.331445	20.79984	1.267899	3158.073	16.33422	378.0962
Probability	0.042184	0.000030	0.530492	0.000000	0.000284	0.000000
Sum	19.53327	39.33410	2838.095	9579.000	1177.658	10.79640
Sum Sq. Dev.	3.794913	1.987980	11896.61	10864436	93.53877	2.118670
Observations	57	57	57	57	57	57

Lampiran 12

Uji Normalitas



Uji Multikolinieritas

Variance Inflation Factors

Date: 02/22/19 Time: 07:22

Sample: 1 67

Included observations: 57

Variable	Coefficient Variance	Uncentered VIF	Centered VIF
C	0.283476	296.7227	NA
INST	0.029457	15.75829	1.075377
ICD	5.29E-06	14.87570	1.155094
EPS	5.78E-09	1.323632	1.152819
SIZE	0.000649	290.9144	1.114107
ROE	0.028434	2.174038	1.106265

Uji Heterokedastisitas

Heteroskedasticity Test: White

F-statistic	2.122625	Prob. F(20,36)	0.0241
Obs*R-squared	30.84404	Prob. Chi-Square(20)	0.0573
Scaled explained SS	8.157254	Prob. Chi-Square(20)	0.9908

Test Equation:

Dependent Variable: RESID^2

Method: Least Squares

Date: 02/22/19 Time: 07:21

Sample: 1 57

Included observations: 57

Variable	Coefficient	Std. Error	t-Statistic	Prob.
C	-1.623999	1.561644	-1.039929	0.3053
INST	0.784918	0.766957	1.023418	0.3129
INST^2	0.038323	0.118385	0.323713	0.7480
INST*ICD	0.001942	0.003493	0.555898	0.5817
INST*EPS	-0.000181	0.000418	-0.432922	0.6677
INST*SIZE	-0.038430	0.042467	-0.904943	0.3715
INST*ROE	-0.399537	0.346524	-1.152984	0.2565
ICD	0.010583	0.008751	1.209330	0.2344
ICD^2	-2.44E-06	2.35E-05	-0.103616	0.9180
ICD*EPS	-4.95E-06	5.43E-06	-0.912516	0.3676
ICD*SIZE	-0.000538	0.000461	-1.167902	0.2505
ICD*ROE	-0.000387	0.003774	-0.102444	0.9190
EPS	-0.001356	0.001370	-0.989709	0.3289
EPS^2	6.57E-08	5.59E-08	1.176454	0.2471
EPS*SIZE	7.94E-05	6.34E-05	1.252600	0.2184
EPS*ROE	0.000103	0.000417	0.246207	0.8069
SIZE	0.101109	0.161796	0.624919	0.5360
SIZE^2	-0.001004	0.004437	-0.226336	0.8222
SIZE*ROE	-0.107157	0.064309	-1.666273	0.1043
ROE	2.353511	1.382164	1.702772	0.0972
ROE^2	0.075277	0.269537	0.279284	0.7816

R-squared	0.541124	Mean dependent var	0.048723
Adjusted R-squared	0.286192	S.D. dependent var	0.039956
S.E. of regression	0.033758	Akaike info criterion	-3.661892
Sum squared resid	0.041026	Schwarz criterion	-2.909189
Log likelihood	125.3639	Hannan-Quinn criter.	-3.369366
F-statistic	2.122625	Durbin-Watson stat	1.954642
Prob(F-statistic)	0.024083		

Uji Autokorelasi

	DW-test	Dl	Du	4-Du	4-Dl
Pengaruh ICD, INST, EPS, SIZE, ROE terhadap UNDP	2,014339	1,3885	1,7675	2,2325	2,6115

Lampiran 13

Uji-t, Uji F, R square, Durbin-Watson

Dependent Variable: IR

Method: Least Squares

Date: 02/22/19 Time: 07:20

Sample (adjusted): 1 57

Included observations: 57 after adjustments

Variable	Coefficient	Std. Error	t-Statistic	Prob.
C	2.097999	0.532425	3.940462	0.0002
INST	-0.174546	0.171631	-1.016988	0.3140
ICD	-0.002180	0.002299	-0.948121	0.3475
EPS	6.40E-05	7.60E-05	0.842373	0.4035
SIZE	-0.070435	0.025468	-2.765678	0.0079
ROE	-0.432042	0.168624	-2.562166	0.0134
R-squared	0.268172	Mean dependent var		0.342689
Adjusted R-squared	0.196424	S.D. dependent var		0.260320
S.E. of regression	0.233357	Akaike info criterion		0.026804
Sum squared resid	2.777224	Schwarz criterion		0.241862
Log likelihood	5.236090	Hannan-Quinn criter.		0.110383
F-statistic	3.737701	Durbin-Watson stat		2.014339
Prob(F-statistic)	0.005854			