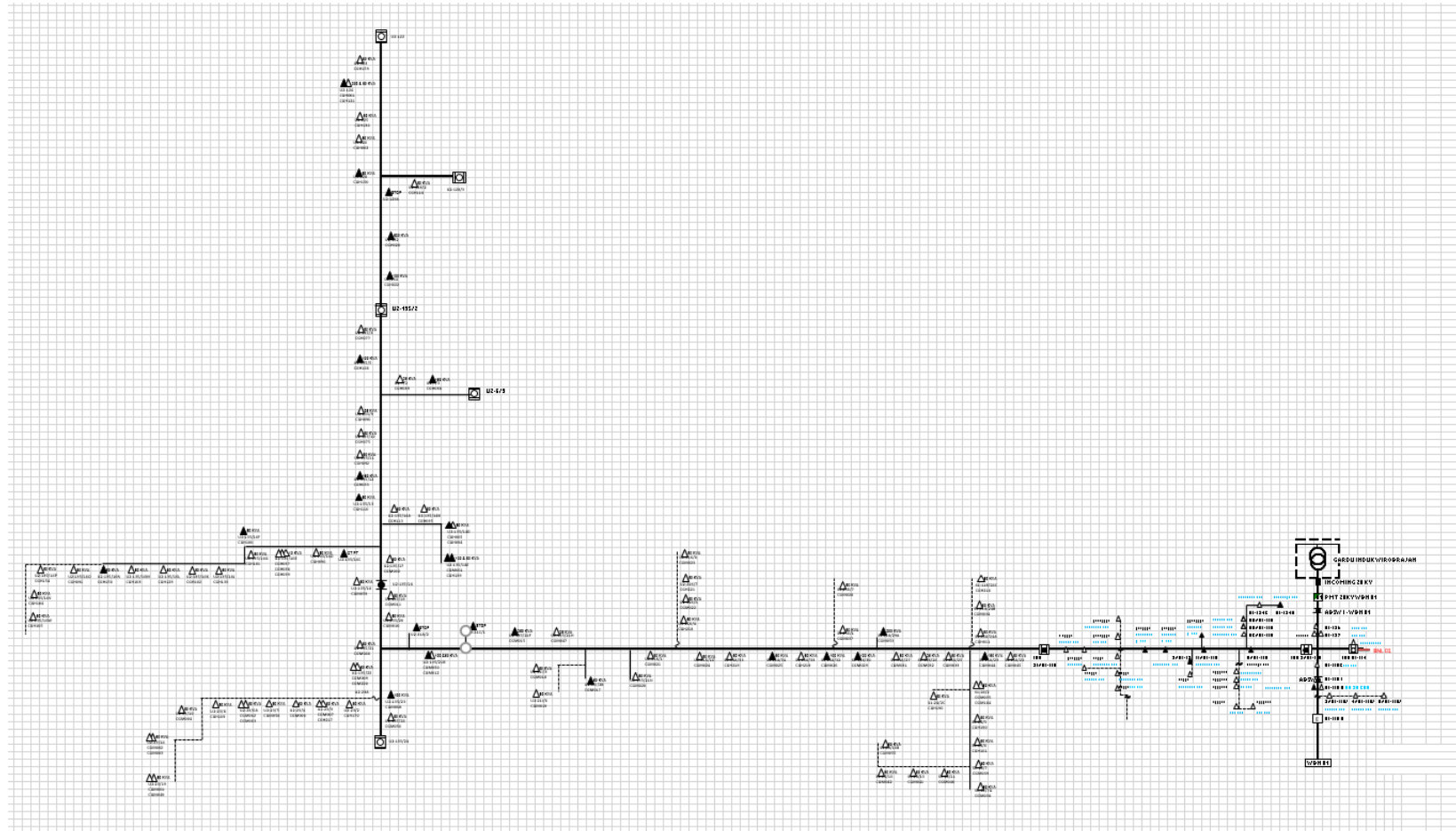


# LAMPIRAN

## Single Line Diagram



Data Trafo WBN-01

<b>kode_feeder</b>	<b>no_tiang_trafo</b>	<b>Alamat</b>	<b>no_section</b>	<b>jumlah_pelanggan</b>
WBN01	S1-126	JL. RE MARTADINATA	1	54
WBN01	S1-127	JL. RE MARTADINATA	1	54
WBN01	S1-127	JL. RE MARTADINATA	1	54
WBN01	S1-114	JL. RE MARTADINATA	1	27
WBN01	S1-118C	JL. RE MARTADINATA	1	54
WBN01	S1-118H	JL. RE MARTADINATA	1	27
WBN01	S1-118H	JL. RE MARTADINATA	1	270
WBN01	S1-118J/2	SINGOSAREN	1	54
WBN01	S1-118J/4	SINGOSAREN	1	54
WBN01	S1-118J/5	SINGOSAREN	1	54
WBN01	S1-118/5	JL HOS COKROAMINOTO	2	173
WBN01	S1-118/5C	GAMPINGAN	2	54
WBN01	S1-118/5D	GAMPINGAN	2	54
WBN01	S1-118/5E	GAMPINGAN	2	54
WBN01	S1-124C	GAMPINGAN	2	54
WBN01	S1-124A	GAMPINGAN	2	173
WBN01	S1-118/6D	KLEBEN	2	27
WBN01	S1-118/6F	KLEBEN	2	54
WBN01	S1-118/6H	KLEBEN	2	54
WBN01	S1-118/6J	KLEBEN	2	54
WBN01	S1-118/6M	KLEBEN	2	54

<b>kode_feeder</b>	<b>no_tiang_trafo</b>	<b>Alamat</b>	<b>no_section</b>	<b>jumlah_pelanggan</b>
WBN01	S1-118/11	JL. HOS COKROAMINOTO	2	680
WBN01	S1-118/11A	PASAR PEKUNCEN	2	108
WBN01	S1-12/2	JL. HOS COKROAMINOTO	2	270
WBN01	S1-12/3	JL. HOS COKROAMINOTO	2	54
WBN01	S1-118/13	JL. HOS COKROAMINOTO	2	270
WBN01	S1-118/15	JL. HOS COKROAMINOTO	2	108
WBN01	S1-118/16A	NGADIMULYO	2	54
WBN01	S1-118/16B	NGADIMULYO	2	54
WBN01	S1-16/2	PAKUNCEN	2	35
WBN01	S1-16/3B	PAKUNCEN	2	35
WBN01	S1-16/3	PAKUNCEN	2	35
WBN01	S1-16/4	PAKUNCEN	2	35
WBN01	S1-118/8	JL. HOS COKROAMINOTO	2	35
WBN01	S1-118/20	JL. HOS COKROAMINOTO	2	35
WBN01	S1-118/22	JL. HOS COKROAMINOTO	3	35
WBN01	S1-118/23	JL. HOS COKROAMINOTO	3	35
WBN01	S1-118/24A	SUDAGARAN	3	35
WBN01	S1-118/24B	TEGALREJO TR3 PAKUNCEN	3	35
WBN01	S1-118/24C	SUDAGARAN	3	35
WBN01	S1-24/2	WIRATAMA PAKUNCEN	3	35
WBN01	S1-24/2	WIRATAMA PAKUNCEN	3	35
WBN01	S1-24/2C	WIRATAMA PAKUNCEN	3	35
WBN01	S1-24/5	WIRATAMA PAKUNCEN	3	35
WBN01	S1-24/6	JL WIRATAMA	3	35

<b>kode_feeder</b>	<b>no_tiang_trafo</b>	<b>Alamat</b>	<b>no_section</b>	<b>jumlah_pelanggan</b>
WBN01	S1-24/7	WIRATAMA PAKUNCEN	3	35
WBN01	S1-24/11	INDRAPRASTA TEGALREJO	3	35
WBN01	S1-24/13	INDRAPRASTA TEGALREJO	3	35
WBN01	S1-24/16	INDRAPRASTA TEGALREJO	3	35
WBN01	S1-24/16B	PR GRADARA TGL REJO	3	35
WBN01	S1-24/7A	WIRATAMA PAKUNCEN	3	35
WBN01	S1-118/25	JL. HOS COKROAMINOTO	3	35
WBN01	S1-118/26	JL. HOS COKROAMINOTO	3	27
WBN01	S1-118/27	JL. HOS COKROAMINOTO	3	54
WBN01	S1-118/29A	BPK COKROAMINOTO	3	138
WBN01	S1-118/30	JL. HOS COKROAMINOTO	3	69
WBN01	S1-118/32	JL. HOS COKROAMINOTO	3	69
WBN01	S1-25E/1	JL. HOS COKROAMINOTO	3	35
WBN01	S1-25E/7	JL. HOS COKROAMINOTO	3	35
WBN01	S1-118/33	JL. HOS COKROAMINOTO	3	35
WBN01	S1-118/34	JL. HOS COKROAMINOTO	3	35
WBN01	U2-21K/1D	PR KUANTAN REGENCY	3	35
WBN01	U2-21K/4	TOMPEYAN	3	35
WBN01	U2-21K/6	TOMPEYAN	3	35
WBN01	U2-21K/7	TOMPEYAN	3	35
WBN01	U2-21K/8	TOMPEYAN	3	35
WBN01	U2-21K/1	TOMPEYAN	3	35
WBN01	U2-135/21N	WIRATAMA PAKUNCEN	3	35
WBN01	U2-21I/2B	WIRATAMA PAKUNCEN	3	35

<b>kode_feeder</b>	<b>no_tiang_trafo</b>	<b>Alamat</b>	<b>no_section</b>	<b>jumlah_pelanggan</b>
WBN01	U2-21I/3	TOMPEYAN	3	35
WBN01	U2-21I/6	WIRATAMA PAKUNCEN	3	35
WBN01	U2-135/21H	JL. HOS COKROAMINOTO	3	17
WBN01	U2-135/21F	JL. HOS COKROAMINOTO	3	172
WBN01	U2-135/21B	JL. HOS COKROAMINOTO	3	69
WBN01	U2-135/21B	TEGALREJO	3	35
WBN01	U2-135/21	JL GODEAN	3	35
WBN01	U2-135/22	JL KYAI MOJO BENER	3	35
WBN01	U2-135/22	JL KYAI MOJO BENER	3	35
WBN01	U2-135/23	JL KYAI MOJO BENER	3	69
WBN01	U2-135/24	JL KYAI MOJO BENER	3	35
WBN01	U2-23/2	JL KYAI MOJO BENER	3	35
WBN01	U2-23/3	BENER TEGALREJO	3	35
WBN01	U2-23/3	BENER TEGALREJO	3	35
WBN01	U2-23/4	BENER TEGALREJO	3	35
WBN01	U2-23/5	BENER TEGALREJO	3	35
WBN01	U2-23/6A	PR KUANTAN BENER	3	35
WBN01	U2-23/6A	PR KUANTAN BENER	3	35
WBN01	U2-23/8	BENER TEGALREJO	3	35
WBN01	U2-23/10	BENER TR4 TEGALREJO	3	35
WBN01	U2-23/14	BENER TR4 TEGALREJO	3	35
WBN01	U2-23/14	BENER TR4 TEGALREJO	3	35
WBN01	U2-23/19	BENER TR4 TEGALREJO	3	35
WBN01	U2-23/19	BENER TEGALREJO	3	35

<b>kode_feeder</b>	<b>no_tiang_trafo</b>	<b>alamat</b>	<b>no_section</b>	<b>jumlah_pelanggan</b>
WBN01	U2-135/20	JL KYAI MOJO BENER	3	35
WBN01	U2-135/19	JL KYAI MOJO BENER	3	35
WBN01	U2-135/18	JL KYAI MOJO	4	35
WBN01	U2-135/17	JL KYAI MOJO	4	35
WBN01	U2-135/16D	SIDOMULYO TR4 BENER	4	34
WBN01	U2-135/16E	SIDOMULYO TR4 BENER	4	7
WBN01	U2-135/16E	SIDOMULYO TR4 BENER	4	7
WBN01	U2-135/16E	SIDOMULYO TR4 BENER	4	7
WBN01	U2-135/16F	SIDOMULYO TR4 BENER	4	34
WBN01	U2-135/16G	SIDOMULYO TR4 BENER	4	34
WBN01	U2-135/16J	SIDOMULYO	4	34
WBN01	U2-135/16K	SIDOMULYO TR4 BENER	4	34
WBN01	U2-135/16L	SIDOMULYO	4	34
WBN01	U2-135/16M	SIDOMULYO TR4 BENER	4	34
WBN01	U2-135/16N	PDAM SIDOMULYO	4	69
WBN01	U2-135/16O	JL KYAI MOJO	4	17
WBN01	U2-135/16P	JATIMULYO	4	34
WBN01	U2-135/16V	SIDOMULYO TR4 BENER	4	34
WBN01	U2-135/16W	SIDOMULYO TR4 BENER	4	34
WBN01	U2-135/14A	KYAI MOJO PINGIT	4	34
WBN01	U2-135/14B	TOMPEYAN	4	69
WBN01	U2-135/14D	JL KYAI MOJO	4	34
WBN01	U2-135/14D	JL KYAI MOJO	4	34
WBN01	U2-135/14E	BALAI POM TOLPEYAN	4	34

<b>kode_feeder</b>	<b>no_tiang_trafo</b>	<b>alamat</b>	<b>no_section</b>	<b>jumlah_pelanggan</b>
WBN01	U2-135/14E	JL KYAI MOJO	4	69
WBN01	U2-135/13	JL KYAI MOJO	4	34
WBN01	U2-135/12	JL KYAI MOJO	4	110
WBN01	U2-135/11	JL KYAI MOJO	4	34
WBN01	U2-135/10	JL KYAI MOJO	4	34
WBN01	U2-135/9	JL KYAI MOJO	4	17
WBN01	U2-7/2	JL TENTARA RAKYAT MATARAM	4	34
WBN01	U2-7/3	UNIV JANABADRA	4	110
WBN01	U2-135/5	JL KYAI MOJO	4	34
WBN01	U2-135/3	JL KYAI MOJO	4	34
WBN01	U2-134	JL P DIPONEGORO	5	69
WBN01	U2-132	JL P DIPONEGORO	5	434
WBN01	U2-128	JL DIPONEGORO	5	34
WBN01	U2-126	JL P DIPONEGORO	5	34
WBN01	U2-125	JL DIPONEGORO	5	34
WBN01	U2-124	JL P DIPONEGORO	5	138
WBN01	U2-124	JL DIPONEGORO	5	34
WBN01	U2-123	JL DIPONEGORO (KIOS PASAR)	5	34
WBN01	U2-128/2	GOWONGAN	5	34

Data Gangguan

Bulan	No	Tanggal	Rayon	Jenis Jaringan	Trip	Masuk	Durasi (Menit)	Teg (kV)	Penyebab	Relay Kerja
JAN	1	05-Jan	YGK Kota	SUTM	11.39	12.17	38	21,3	I1	GFR >> HS2
	2	09-Jan	YGK Kota	SUTM	13.58	15.26	88	21,2	E2	OCR >> HS2 $\emptyset$ R,S
	3	18-Jan	YGK Kota	SUTM	1.21	2.09	48	21,2	I1	OCR >> HS2 $\emptyset$ R,S
FEB	1	03-Feb	YGK Kota	SUTM	2.58	4.34	96	21,2	E1	OCR >> HS2 $\emptyset$ R,S
	2	07-Feb	YGK Kota	SUTM	17.14	21.19	245	21,4	I1	OCR $\emptyset$ T >> HS2
	3	09-Feb	YGK Kota	SUTM	15.55	17.15	70	21,2	E2	OCR >> HS2 $\emptyset$ R,S
	4	18-Feb	YGK Kota	SUTM	22.41	22.52	11	21,2	I1	OCR >> HS2 $\emptyset$ R,S
MAR										
APR	1	11-Apr	YGK Kota	SUTM	20.03	22.13	130	21,2	E3	OCR GFR >> HS2
MEI										
JUN										
JUL										
AGT	1	18-Agt	YGK Kota	SUTM	9.05	9.21	16	20,9	I2	OCR GFR HS2 C
SEP	1	22-Sep	YGK Kota	SUTM	17.48	17.54	6	21,2	E3	OCR GFR >> HS2
OKT										
NOV	1	09-Nov	YGK Kota	SUTM	15.18	16.27	69	21,1	E2	OCR >> H2
	2	29-Nov	YGK Kota	SUTM	19.08	19.15	7	21	E2	OCR GFR >> HS2
DES	1	2-Des	YGK Kota	SUTM	6.21	7.29	67	21	I2	OCR $\emptyset$ R,S,T >> HS2
	2	26-Des	YGK Kota	SUTM	17.51	18.03	12	21,1	E2	OCR GFR >> HS2 S
Total	14						893			