

Program & Call for Papers -- Location, Venue & Travel -- Abstracts & Publishing -- Registration -- About

## PROGRAM & THEMES for the Lombok 2015 Conference

CLICK HERE to view the  
CONFERENCE PROGRAMME & PRESENTATIONS

### Keynote Speakers

- Fleur Fallon, Sun Yat Sen University, China
- Philip Pearce, James Cook University, Australia
- David Simmons, Lincoln University, New Zealand

### Special Presentations

- Alan A. Lew, Northern Arizona University, USA
- Franck Lavigne, Universite Paris 1
- Oliver Oehms, GIZ GmbH

### Workshop on Knowledge Based Tourism

- with a focus on Mt. Rinjani - *more information*

### Technical Field Trips

- Route A - Seaside - *more information*
- Route B - Waterfall - *more information*

### Paper Awards

- Best Written Paper (see requirements under Abstracts)
- Best Presentation Award (audience vote)

### Important Dates

- 31 May 2015 - Paper Abstract Due - Late Abstracts will be accepted on a space available basis
- 1 July - Full Papers Due for Pre-Conference Proceedings; Last Day for Conference Presenters to register to be included in

### Major Themes

#### Tourists in the Tropics

- Tourist Problem Behaviours
- Challenges in Visiting the Tropics
- Tourists Approaches to Sustainability
- Interpretation and Tourist Awareness
- Emerging Tropical Markets
- Changes in Tourist Interests in the Tropics
- Special Interest Tropical Tourism

#### Environment and Tourism

- Tourism and Global Climate Change/Warming Issues
- Tourism Industry and Carbon Emission
- Forest Degradation and Tourism Development
- Marine Conservation and Tourism industry
- Tourism and Ecosystem Services
- Sustainable Tourism Planning
- Sustainable Tourism in Sensitive Environments

#### Economics and Business in Tourism

- Strategic Planning Development in Tourism
- Tourism and Financial Management
- Tourism and Regional Economic Development
- Entrepreneurship and Innovation in the Tourism Industry
- Business Ethics in the Tourism Industry
- Tourist Consumer Behaviour
- Destination Marketing
- Islamic Finance and Tourism

#### Gender and Equity in Tourism

- Gender Equity in the Tourism Industry
- Family Issues in Tourism
- Child Labour in the Tourism industry
- Gender Identity and Sexual Issues in Tourism
- Human Resources in Tourism

Program & Call for Papers -- Location, Venue & Travel -- Abstracts & Publishing -- Registration -- About

#### RECENT LOMBOK 2015 CONFERENCE ANNOUNCEMENTS

## ABSTRACT SUBMISSION

Abstract Submissions are now Closed - No New Abstracts will be Accepted.

### ABSTRACT FORMAT TEMPLATE & INSTRUCTIONS

- Please use this MS Word file to format your abstract.

### FULL PAPER FORMAT TEMPLATE & INSTRUCTIONS

- Please use this MS Word file to format your full paper.

### ABSTRACT & FULL PAPER SUBMISSION

- Please email your abstract and full papers in MS Word file format to:  
(1) <info.conference2015@gmail.com>  
and  
(2) <alan.lew@nau.edu> or <alanalew@gmail.com>
- Each registered participant is allowed to present one abstract/paper at the conference. Participants who wish to present more than one paper must pay an additional registration fee equivalent to the Domestic Student fee for the second paper. No more than two papers may be presented, although an author's name may appear on multiple papers.

### ABSTRACT REVIEW

- Abstracts will be reviewed by the conference scientific committee for quality and suitability to the conference themes. Only authors of abstracts that require revisions will be notified.
- All accepted abstracts will be posted on this webpage once the presentations program has been confirmed.

### IMPORTANT DATES

- 31 May - Paper Abstract Due
- 15 June - Early Registration Ends; Regular Registration Begins

## FULL PAPER PUBLICATION OPTIONS

**POST-CONFERENCE PROCEEDINGS - Instructions and Submission Form - you will need the password sent to you by email to access this site**

### PRE-CONFERENCE PROCEEDINGS & FULL PAPER SUBMISSION

- A Pre-Conference Proceedings will be provided on in digital format that will be distributed (cd rom or flash drive) at the conference. All participants are invited to submit their full paper for the Pre-Conference Proceedings, which will also contain all of the paper abstracts. A full paper submission is not required, except for those who wish to be considered in the Outstanding Paper Competition.
- There will be no peer review of full papers submitted to the Pre-Conference Proceedings. All abstracts will be peer reviewed to ensure suitability to the conference themes, completeness of content, and acceptable grammar.
- Full papers that must be submitted by July 1, 2015 to be included in the Pre-Conference Proceedings. All papers received that conform to the full paper submission instructions and copyright restrictions will be included without additional editing. Please format your manuscript using the Full Paper Template and Instructions file.
- Authors must obtain written permission to use copyrighted material in their full papers. See: Permission Guidelines and Permission Request Form. In general, it is suggested that you remove all copyrighted material from your paper. Papers for which this is an issue will not be included in the Pre-Conference Proceedings.

### POST-CONFERENCE PUBLISHING & INDEXING

- The Conference Best Paper Award winner will be published in the journal *Tourism Geographies* (SCSI 1.695 Impact Factor);

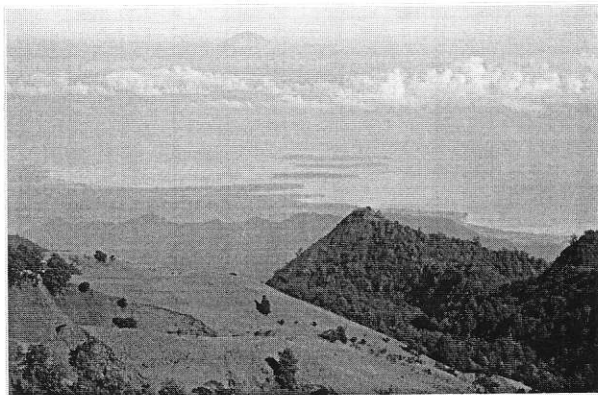
- July 1 - Registration Due for Presenters - Only abstracts and papers of presenters who are registered by this date will be included in the conference program
- 1 July - Full Papers Due for Pre-Conference Proceedings
- 15 July - Registration Ends - no registrations will be accepted after this date
- 29-31 July - Conference Dates
- 31 July - Full Papers Due for consideration for the Post-Conference Proceedings Book (by Springer)

PAPER AND CONFERENCE AWARDS

- To be considered for the Best Paper Award and other paper awards, authors must submit a full paper by July 1, 2015 for inclusion in the Pre-Conference Proceedings.
- Multiple monetary awards will be made at the conference, sponsored by James Cook University.
- A full paper is not required for consideration for the Best Presentation Award, which will include all presentation made at the conference, except for keynotes and special presentations.
- All awards will be based on the first author listed for each abstract and paper, where that is a selection criteria.

editor Alan A. Lew). The paper may require additional editing and revisions prior to publication.

- All other full papers will be eligible to be published in a Post-Conference Proceedings book to be published by Springer. Authors will be responsible for proper English copy editing of their papers. Please follow the Full Paper Template and Instructions above for formatting your paper. The copyright permissions, indicated above, must also be followed.
- Papers submitted to the Post-Conference Proceedings book will be fully copyrighted by Springer.
- The Post-Conference Proceedings book will be submitted by Springer to the Thomson ISI Proceedings Index. Only papers included in book will be indexed. Therefore, all participants are encouraged to submit a paper, even if it is relatively short, by the July 31, 2015 due date.
- Presentation (Powerpoint files) may be submitted for publication in *Tourism, Leisure and Global Change*. Please note that copyright permissions are also required for published presentations.
- Authors may also considered submitting their papers for publication in the following journals (contact Alan A. Lew for additional information):
  - *Tourism Geographies*
  - *Current Issues in Tourism*
  - *Journal of Heritage Tourism*
  - *Tourism Review International*



The three Gilis (islets) with Bali's Mt. Agung in the distance from Mt Rinajani.



Hinduism on Lombok.



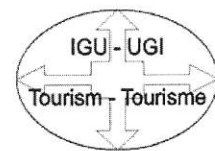
JOIN our Lombok2015 Email List

for the Latest News and Announcements for the Tropical Tourism Outlook Conference 2015.



## ABOUT THE LOMBOK 2015 CONFERENCE

### Conference Organizers



This conference builds on the first Sustainable Tourism Symposium organized by the University of Mataram (UNRAM) in July 2014 to initiate the expansion of tourism studies on the island of Lombok, Indonesia. It is also the eighth in the **Tourism Outlook Conference** series, organized by the Universiti Teknologi Mara, Malaysia, and follows a very successful conference in Sri Lanka in August 2014. The conference also incorporates the fourth conference in the **Tropical Coastal and Island Tourism** series, sponsored by Northern Arizona University and the International Geographical Union's Tourism Commission.

The theme of the Lombok conference is **Balancing Development and Sustainability in Tourism Destinations** and focuses on the challenge of growth and conservation in communities seeking a better future that includes tourism. The island of **Lombok, Indonesia**, with its diversity of natural environments and social contexts, provides an ideal venue to address these issues.

### Conference Organizers and Sponsors

- University of Mataram (UNRAM), Faculty of Economics, Indonesia
- Universiti Teknologi Mara, Shah Alam (UiTM), Faculty of Hotel and Tourism Management, Malaysia
- Northern Arizona University (NAU), Department of Geography, Planning and Recreation, USA
- James Cook University, Australia and Singapore (JCU), School of Business
- International Geographical Union (IGU), Commission on the Geography of Tourism, Leisure and Global Change
- *Tourism Geographies* journal (TG), Routledge, UK
- Sabaragamuwa University of Sri Lanka (past conference organizer)

### Conference Secretariat

Imanuella Andilolo, M.Sc., UNRAM  
 Norliza Aminudin, Ph.D., UiTM  
 Alan A. Lew, Ph.D., NAU and TG and IGU  
 Norain Othman, Ph.D., UiTM  
 Akhmad Saufi, Ph.D., UNRAM  
 Abhishek Bhati, Ph.D., JCU

### Scientific Committee

Akhmad Saufi, University of Mataram, Indonesia  
 Alan A. Lew, Northern Arizona University, USA  
 Athula Gnanapala, Sabaragamuwa University, Sri Lanka  
 Chandana P. Udawatta, Sabaragamuwa University, Sri Lanka  
 Dieter Mueller, University of Umea, Sweden  
 Imanuella Andilolo, University of Mataram, Indonesia  
 Iraj Ratnayake, Sabaragamuwa University, Sri Lanka  
 Jenny Panchal, James Cook University, Singapore  
 Mohamad Abdullah Hemdi, Dean, UiTM Shah Alam, Malaysia  
 M.S.M. Aslam, Sabaragamuwa University, Sri Lanka  
 Norliza Aminudin, UiTM Shah Alam, Malaysia  
 Norain Othman, UiTM Shah Alam, Malaysia  
 Thirumaran Kailasa, James Cook University, Singapore

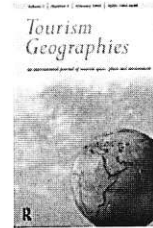
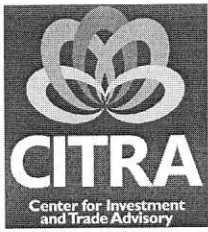
# POTENTIAL CONFERENCE SPONSORS ARE WELCOME

Please express your interest by contacting any of the Conference Secretariat members, or [info.conference2015@gmail.com](mailto:info.conference2015@gmail.com)

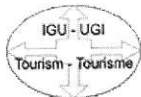


All website photos are by Imanuella Andilolo and Alan A. Lew

## Conference Supporters



JOIN our Lombok2015 Email List for the Latest News and Announcements for the Tropical Tourism Outlook Conference 2015



## RECENT LOMBOK 2015 CONFERENCE ANNOUNCEMENTS

## REGISTRATION

## International Participants\*

Full Participant:

- Early registration: USD\$ 380
- Regular registration: USD\$ 425

Student or Spouse/Partner Participant:

- Early registration: USD\$ 280
- Regular registration: USD\$ 300

## Domestic Indonesia Participants\*

Full Participant:

- Early registration: Rp. 2,500,000
- Regular registration: Rp. 3,000,000

Student or Spouse/Partner:

- Early registration: Rp. 1,500,000
- Regular registration: Rp. 2,000,000

\* **International participants** are those who reside outside of Indonesia; registration fees will be paid by credit card or prepaid cashiers/bank check in USD\$ to Northern Arizona University (NAU). Checks must be received at NAU no later than by the due dates below.

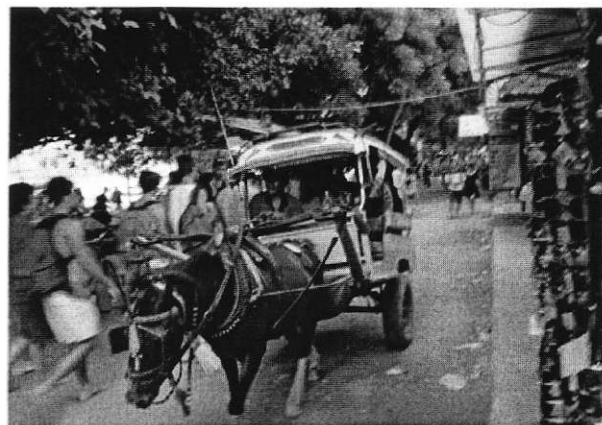
\***Domestic participants** are those who are residents of Indonesia; registration fees will be paid by bank transfer to UNRAM. Bank information is on the domestic registration form.

Each registered participant is allowed to present one abstract/paper at the conference. Participants who wish to present more than one paper must pay an additional registration fee equivalent to the Domestic Student fee for the second paper (US\$115 early, US\$150 regular). No more than two papers may be presented, although an author's name may appear on multiple papers.

Abstracts and registrations are not accepted until payment is received.

## KEY DUE DATES

- [May 31 - Abstracts Due](#)
- June 8 - Abstract Acceptance Decision
- [June 15 - Early Registration Due with Payment](#)



Transportation on the car- and motorbike-free Gili Trawangan, off the coast of Lombok, Indonesia

## Registration Fee includes

- Admission to all conference presentations, panels and workshops on the first and third day of the meeting
- A full-day Conference Technical Field Trip on the second day of the meeting
- The Conference Gala Dinner
- A Conference Kit and Certificate of Participation (no available to Partner participants)
- Lunch and break snacks during the first and third day, and lunch on the Technical Field Trip on the second day of the conference

The registration fee does NOT including accommodation and airport transfers.

## REGISTRATION FORMS

- **International Registration: CLOSED**  
- Payment information is on the registration form. Only credit cards and bank checks in US\$ are accepted for payment. Checks must be received by NAU by the due dates at left.\*

- June 16 - Regular Registration Starts
- **July 1 - Registration Due for All Presenters** - Only abstracts and papers of presenters who are registered by this date will be included in the conference program
- July 1 - Full Paper Due for the Pre-Conference Proceedings
- July 15 - Regular Registration Due with Payment (no late registrations accepted; this due date is for participants who are not presenting at the conference)
- July 29-31 - Conference Dates

- **Domestic Registration: CLOSED**

- Domestic participants include all those currently residing in Indonesia; everyone else is an International participant
- Payment information is on the registration form. Only bank telegraphic payment is accepted.

\* Bank wire payment is also possible for international registration payment. Please contact Dr. Alan Lew by email if you wish to use this option.



南京大学

NORTHERN ARIZONA UNIVERSITY



FLAGSTAFF



UNIVERSITI TEKNOLOGI MARA





"Proceeding Tropical Tourism Outlook Conference : balancing development and sustainability in tourism destinations, 29-31 July 2015 , Lombok Raya Hotel, Mataram, Nusa Tenggara Barat, Indonesia / edited by Alan A. Lew, Nor'ain Othman, Akhmad Saufi, and Imanuella Andilolo, ISBN 978-602-73034-0-9"

## **ECONOMIC VALUATION OF CULTURAL HERITAGE: STUDY AT PRAMBANAN TEMPLE COMPOUND**

**Muhamad Sidiq Wicaksono**

Student

Master of Tourism Studies

Universitas Gadjah Mada

m.sidiq.wicaksono@mail.ugm.ac.id

**Tri Kuntoro Priyambodo**

Secretary of Postgraduate Tourism Studies

Universitas Gadjah Mada, Yogyakarta, Indonesia

mastri@ugm.ac.id

**Dyah Mutiarin**

Lecturer

Universitas Muhammadiyah Yogyakarta

Yogyakarta, Indonesia

mutiarin71@gmail.com

Economic valuation in Prambanan Temple Compound is an important issue in result of increasing tourism activities in cultural heritage sites. Tourism activities in the cultural heritage sites can generate benefits for the economy but also can cause negative impacts on sustainability of cultural heritage in the area. Assessing the economics value of Prambanan Temple Compound will lead to implement sustainable tourism management to prevent exploitation of cultural heritage. This study aimed to determine factors that influence demand and individual willingness-to-pay in Prambanan Temple Compound, economic value of this site, and sustainable tourism scenarios which is best applied in this site. This study is expected as a consideration among tourism stakeholders in formulating sustainable tourism development strategy in Prambanan Temple Compound and also to determine the economic value in the Prambanan Temple Compound, which both of them associated with sustainable tourism management as a way to prevent excessive exploitation caused by high tourism activities in this area. This study using two methods, namely Travel Cost Method and Contingent Valuation Method. The economic value obtained from the method of travel cost amounted Rp.3.026.701.500.108 and the results obtained from the Contingent Valuation Methods with varying level of scenarios are Rp.176.680.767.077 to Rp.219.315.349.218. This value higher than gross revenue from admission which only gained Rp.54.170.046.000 through 2014. This study found that there is a potential economic scenario to gain more revenue for the management when the management could enhance temple compound conservation and services.

**Keywords:** Cultural Heritage Sites, Sustainable Tourism, Economic Valuation, Travel Cost Method, Contingent Valuation Method



Tri Kuntoro Priambodo is an associate professor in Tourism Studies Program Universitas Gadjah Mada where he is teaches information technology in tourism. He is a secretary of Post-graduate Tourism Studies in Universitas Gadjah Mada.

Dyah Mutiarin is lecturer in Department of Governmental Studies, Universitas Muhammadiyah Yogyakarta and teaches course in economic, social, and politics in tourism studies Universitas Gadjah Mada. She received Doctor of Philosophy in University Science Malaysia.

## Introduction

Economic valuation in Prambanan Temple Compound is an important issue in result of increasing tourism activities in cultural heritage sites. Tourism trends to visit world heritage sites was increased, which is shown number of visitor to Prambanan Temple Compound increased every year from 1,074,138 in 2009 to 1,265,897 in 2012. This trends became threat to this site, notably in impact from highly-visiting to this site (Cochrane and Tapper, 2006). Increase in number of visitors, especially on holiday, which are uncontrolled, can gradually damage the temples' physical. For example, visitors whose trail by foot can damage temples blocks (Suseno, 2014). Huge number of visitors can cause quality degradation of sites accidentally or intentionally (Syahdin and Patunru, 2010). However, tourism might be balancing between conservation and economy benefit for society in surrounding area. World Heritage can gather benefit from tourism activity, such as additional funds for conservation, helps community development as well as public awareness of the importance of conservation area (Cochrane and Tapper, 2006).

Valuing the economics value of Prambanan Temple Compounds will lead to implement sustainable tourism management to prevent exploitation in cultural heritage. This study was conducted to determine factors that influence demand and individual willingness-to-pay in Prambanan Temple Compound, economic value of this site, and sustainable tourism scenario which is best applied in this site. This study is expected to be a reference for stakeholders in formulation the sustainable tourism development strategy in Prambanan Temple Compounds.

## Literature Review

Previous studies concluded that methods can be used in economic valuation on cultural heritage such as contingent valuation method, travel cost method, and choice-based method (Noonan, 2003; Subanti, 2005; Dong, et.al, 2011; Fitriana, 2013; Fonseca and Rebelo, 2010; dan Bedate et.al (2004). Rujigrok (2006) finds that cultural heritage can contribute in three benefits: a housing comfort value, a recreation value, and a bequest value. Bedate *et.al* (2004) adopted Travel Cost Method (TCM) to determine consumer surplus of four different cultural heritage sites in Spain. Syahdin dan Patunru (2012) adopted Choice-based method and TCM to valuing the Borobudur Temple. This study finds large visitor consumer surplus of Borobudur Temple, which can lead the manager of Borobudur Temple to raise their entrance fee. In addition to adding revenue, raising entrance fee can restraint visitors rate whose potentially damage Borobudur Temples, directly or indirectly.

Studies on economic valuation on cultural heritage also conclude factors that impact demand of visitors such as level of education, gender, travel cost, income, ages, other destination, and quality of the attraction. (Foncesa, 2010; Supriyono, 2009; Hermawan, 2009; Waris, 2012; dan Sugriani, 2012).

## Economic Valuation of Cultural Heritage

Cultural sites are public goods which can not be transfered, so it can not have market value. Cultural heritage goods can valued from its economic benefit and externalities (Snowball, 2008:10). So, its valuation called economic valuation. Valuation technique to valuing cultural heritage is different with valuing technique on goods that have market value (Ready dan Navrud, 2002: 7-8). Valuation technique for valuing cultural heritage based on non-market natural resources economic valuation (Fauzi, 2010:212).

Fauzi (2010: 212) stated, valuation technique on non-market natural resources divided into two groups. The first group is a valuation technique that relies on the implicit price which the willingness to pay (WTP) is revealed through the developed model. This technique is often referred to rely revealed WTP technique (willingness to pay are revealed). Valuation techniques that belong



to the first group are the travel cost method, hedonic price method, and random utility models. The second group is a valuation technique that is based on a survey in which the willingness to pay is obtained directly from the respondents who declare verbally or in writing. Valuation techniques that are included in this group are contingent valuation method, discrete choice models, and models of contingency options.

Goods and services produced from culture can be given a quantitative value using the basic value of the market and non-market values through economic valuation. Economic valuation of culture is also an economic tool for estimates the monetary value of goods and services produced by a culture that uses valuation techniques. Economic valuation of natural resources and the environment is also defined as the imposition of a monetary value on natural resources in accordance with the purpose of its use in this case include the total economic value, the recovery value of the damage/contamination and pollution prevention/damage (Asian Development Bank, 1996:23). In general, the economic value of the measurement is defined as the maximum amount a person wants to sacrifice to obtain goods and services of other goods and services. Formally, this concept is called Willingness-to-Pay (WTP).

TCM approach using travel costs or cost of trip is mainly to assess the environment in sights. This approach assumes that cost of travel and time sacrificed certain travelers regarded as environmental values are tourist Willingness-to-Pay (Suparmoko 2009:108). According to Pagiola, et.al (2004) and Parumog, et. al (2003) TCM deduce the value of the observed behavior of the respondents. By using the total expenditure of respondents, socioeconomic characteristics of respondents, and the number of visits, TCM is used to derive the demand curve of attraction and its benefit indicator, consumer surplus. Through the demand curve, the total benefits of the respondents can be calculated.

The basic purpose of TCM is to know the used value of an attraction by using the proxy approach. Costs incurred to consume services from a tourist attraction is used as a proxy to determine the price of these attractions. according to Fauzi (2010:213) travel expenses can be used to measure the benefits and costs due to changes in the cost of access (entrance fee) for a recreation area. The addition of a new recreation area, changes in environmental quality recreational areas, as well as the closure of the existing recreation.

Contingent valuation method is based on a survey method that is often used to estimate the economic value of environmental or resource that can not be marketed. Although this method can be used to measure the used value and the value of non-used, but in this study the CVM will be used to estimate the value of the non-used of Prambanan Temple Compounds for visitors who benefit directly from the Prambanan Temple Compounds. Non-used value consists of the value of the option (option value) which is defined as the value of direct and indirect benefits in the future, the value of existence (existence value) that describes the value resulting from the preservation of attractions, as well as the heritage values (Bequest value) is inheritance the value of the benefits and non-benefits for the next generation.

Factors that influence the willingness to pay and the number of visits in the Prambanan Temple Compounds consists of travel expenses, income, age, education, and perceived quality of Prambanan Temple Compounds. Age and education affect willingness to pay and the number of visits. Willingness-to-Pay will be divided into scenarios that will be designed in this study then WTP per scenario will determine the economic value of Prambanan Temple Compounds. Travel cost method will use to determine the value of economy consumer surplus, the economic value of the travel cost method is the aggregate consumer surplus

## Methodology

This study uses two methods in the analysis stage, the method of travel costs and contingency valuation method. The second equation modeling method is as follows

Travel Cost Method:

$$V = \beta_0 + \beta_1 TC + \beta_2 INC + \beta_3 EDU + \beta_4 AGE + \beta_5 DSB + \beta_6 DQ$$

Contingent Valuation Method

$$WTP_i = \beta_0 + \beta_1 TC + \beta_2 INC + \beta_3 EDU + \beta_4 AGE + \beta_5 DQ$$

where:

- V : number of visits in Prambanan Temple Compounds
- WTP : willingness to pay for Prambanan Temple Compounds
- TC : travel cost to visit Prambanan Temple Compounds
- INC : Income
- EDU : education level
- AGE : age
- DSB : dummy for substitute tourist attraction beside Prambanan Temples Compound
- DQ : dummy for attraction quality perceived of Prambanan Temple Compounds
- i* : scenarios

Scenarios used in this study divided into one initial condition scenario and three improvement scenarios (improvement in environmental, improvement in conservation, and improvement in facilities and amenities). Sample used in this study are domestic and international visitors with quota sampling method with the minimum number of samples using a slovin's calculation method based on the number of visits in 2014 amounted to 94 respondents. Respondents were then divided by the proportion of visitors, foreign, and the type of day excursions. Deployment is done in various types of days (weekdays, public holiday, and weekends) to be able to capture the full characteristics of travelers (Finn, *et.al*, 2000). The analysis tool is divided into two according to the method used, the regression count data for travel cost method and multiple linear regression for contingency valuation method.

## Findings and Discussion

Result in Table 1 shows that travel expenses average of Rp.203,276.4 and the average visitor visit Prambanan Temple Compounds as much as 2.8 times a year. The mean value of age of the respondents in this study is 37.85 with an average education of 13.6 years or graduated from high school. 61 percent of respondent used private vehicles to this area which make their travel cost higher than used public transportation. reasons behind this were they were not only visit prambanan temple but also visit other destinations like Malioboro street or Borobudur Temple and using private vehicle was the easiest way to do that.

Table 2 shows mean value of WTP in this study was Rp.42.283 on initial conditions, and Rp.51.028 the first scenario, Rp.51.575,47 in scenario II, and Rp.49.113,21 in scenario III. All values above the current admission fee for visitors at Prambanan Temple Compounds (Rp.30.000). WTP in second scenario was the highest value above the other scenarios, this result suggest that respondent more concern about conservation condition in this area rather than other conditions such as increased the facilities and amenities.



## **Demand Pattern and Willingness-to-Pay**

The pattern of demand for tourist visitors as was done in this study showed that visitors visiting Prambanan Temple Compounds affected by the travel cost, age, income and quality of the tourist attractions. Travel costs have a negative effect on demand for tourist visits despite having a positive value on WTP. Research conducted by Foncesa (2010) which examined on tourist visits to the Museum of Lamego in Portugal have the same result, namely the cost of travel has a negative effect, this happens because visitors tend to prefer sites that are easier and cheaper to access tourism activities because visitors have a limited budget for travel.

Tourist income negatively affect tourist arrivals, it is contrary to the majority of previous studies. Poor and Smith (2004) obtain similar results when conducting empirical research in St. Mary's City Maryland. The reason for this is because tourism is a form of mass tourism could become less attractive for visitors who have a higher income. Travel costs also have a positive influence on the WTP for visitors in all scenarios. The higher the income, the more money that is willing to pay for visitors to enjoy the tourist activities. This is consistent with research Ready and Navrud (2002) that the amount of income affects the willingness to pay for visitors at tourist sites, on the other hand, Quality of attractions also affect the demand for tourist visits and willingness to pay. (Ready and Navrud, 2002).

## **Economic Value of Prambanan Temple Compounds**

The economic value obtained by the method of travel costs and contingency valuation shows that the economic value based Travel Cost Method for Rp.3.026.701.500.108. and economic value by using Contingent Valuation Methods with four scenarios at the initial condition the economic value amounted at average is Rp.176.680.767.077, at the first scenarios the average economic value amounted Rp.219.315.349.218, the average value of the economy in the second scenario amounted Rp.221.667.040.600, while the third scenario amounted Rp.211.088.719.835.

The economic value of the travel cost method that describes the consumer surplus has a value far greater than the economic value of the contingent valuation method that uses a WTP as a basis for the calculation at various scenarios. This is because in developing countries, the visitor does not know exactly how the willingness to pay by their income. It is as expressed by Dong et.al (2011) that visitors usually debasing their willingness to pay. Looking at the economic value based on the travel cost, the actual visitors obtain consumer surplus or benefits far greater than the willingness to pay for them in the Prambanan Temple Compounds.

## **Sustainable Tourism Approach**

Based on the results of economic value with various scenarios, it is known that the scenario II (increased in conservation quality) has an average value of the highest compared to other scenarios. The economic value of the second scenario of Rp.221.667.040.600 compared to the economic value at the initial condition Rp.176.680.767.077, the first scenario (increased in environment quality) for Rp.219.315.349.218, and the third scenario (increased in amenities quality) of Rp.211.088.719.835. This means that visitors assume that the preservation of archeological goods in the Prambanan Temple Compounds must be preserved so that they are willing to pay more to maintain its sustainability.

## **Conclusion**

Analysis of the tourist demand function to Prambanan Temple Compounds through Travel Cost Method, the variables that influence number of visits are travel cost, age, tourist income, and the attractions' quality. While the analysis of the willingness to pay with four various scenarios can be obtained different levels of economic values. Income has a significant influence with the positive



direction on all scenarios, age has a significant negative effect on the initial scenario and the quality of the attractions coined significant value to the positive direction in all scenarios.

The economic value of Prambanan Temple Compounds by using the Travel Cost Method has a value of Rp.3.005.568.275.200. and economic value by using Contingency Valuation Methods with four scenarios, average economic value at initial scenario was Rp.176.680.767.077, the average economic value at first scenario was Rp.219.315.349.218, the average economic value in the second scenario was Rp.221.667.040.600, while the third scenario was Rp.211.088.719.835.

Through the contingency valuation method, an analysis by including four scenarios (initial, improvement of environmental conditions, increase conservation, and improved comfort and safety) through calculation of WTP and the economic value, it can be seen that an increase in the visitors' WTP followed by increase in economic value. Thus, if the Prambanan Temple Compounds' management make improvements in sustainable tourism by improving environmental conditions, conservation and comfort and security can contribute to improving the quality of its attractions as well as the visitors' WTP so that the increase in the price of admission can be done without reducing the number of visitors.

### Limitation

This Research that has some limitations in the acquisition of data or analysis. Among deployment questionnaire survey was conducted during the period of February which is the lowest month of visits throughout the year in the Prambanan Temple Compounds. The distribution of the questionnaire in cannot captured the characteristics of visitors during the peak season in December. In addition, the lack of international tourists' data so it can not make a separate analysis between domestic and international visitors so that cannot captured the characteristics of international visitors. Scenarios used are limited to the three possible scenarios, some studies suggest using the choice-method to strengthen the argument in scenarios-based studies. This study is limited in the economic valuation analysis with the approach of tourism activities, not including elements of the community in this area to assessing value of the Prambanan Temple Compounds. Limitations of this study are expected to be improved in future research on world heritage valuation.

### References

- Bedate, A. Herrero, L.C. and Sanz, J.C.(2004). "Economic Valuation of The Cultural Heritage: Application of Four Case Studies in Spain". *Journal of Cultural Heritage* 5:101-111.
- Biro Pusat Statistik, (2013)*Daerah Istimewa Yogyakarta dalam Angka Tahun 2013*. Yogyakarta:BPS.
- Biro Pusat Statistik, (2013)*Statistik Kepariwisata DIY tahun 2013*. Yogyakarta:BPS.
- Chocrane, J, dan Tapper, R. (2006) "Tourism's Contribution to World Heritage Site Management." *Managing World Heritage Sites*. 97-109 London:Elsevier Press:
- Dong, X., Jie, Z., Ruizhi, Z., Shi'en, Z. Min, L (2011) "Measuring Recreational Value of World Heritage Sites Based on Contingent Valuation Method: A Case Study of Jiuxhaigou." *Chinese Geographics Science*. 20 (1):119-128
- Fauzi, A. (2010)*Ekonomi Sumber Daya Alam dan Lingkungan*. Jakarta:PT. Gramedia Pustaka Utama.
- Finn, M., Elliot-White, M., Walton, M. (2000)*Tourism and Leisure Research Methods: Data Collection, Analysis, and Interpretation*. Essex: Pearson Education Ltd.
- Fitriana, I.A. (2013) *Valuasi Ekonomi Warisan Budaya: Studi Kasus Situs Ke'te Kesu, Toraja Utara Tahun 2013*. Tesis: Universitas Gadjah Mada.



- Foncesa, S., Robello, J., (2010) "Economic Valuation of Cultural Heritage: Application to a Museum Located in the Alto Douro Wine Region-World Heritage Site." *Pasos Revista de Turismo y Patrimonio Cultural* 8(2): 339-404
- Hermawan, D (2009) Penilaian Ekonomi Cultural Heritage dengan Menggunakan Pendekatan Travel Cost Method: Studi Kasus Situs Tamansari Yogyakarta. Tesis: Universitas Gadjah Mada.
- Noonan, D. (2003) "Contingent Valuation and Cultural Resources: A Meta Analytical Review of the Literature". *Journal of Cultural Economics* 27: 159-176
- Parumog, M.G., Mizokami, S., Cal, P.C. (2003). "Using Travel Cost and Contingent Valuation Methodologies in Valuing Externalities of Urban Road Development: An Application in Valuing Damages to Cultural Heritage." *Journal of the Eastern Asia Society for Transportation Studies* 5: 2948-2961.
- Pagiola, S., von Ritter, K., Bishop, J., (2004) *Assesing the Economic Value of Ecosystem Conservation*. The World Bank Environment Departement.
- Poor, P. Joan, S., Jamie, M., (2004) "Travel Cost Analysis of a Cultural Heritage Site: The Case of Historic St. Mary's City of Maryland." *Journal of Cultural Economics*. 28:217-229.
- PT. Taman Wisata Candi Borobudur, Prambanan, dan Ratu Boko, (2011) *Laporan Tahunan PT. Taman Wisata Candi Borobudur, Prambanan, dan Ratu Boko 2011*. Yogyakarta: PT. Taman Wisata Candi Borobudur, Prambanan, dan Ratu Boko.
- Ready, R.C., Navrud, S. (2002) *Why Value Cultural Heritage?*. Massachusetts.: Edward Elgar Publishing.
- Rosato, Paolo, dan Defrancesco, E., (2002) "Individual Travel Cost Method and Flow Fixed Costs." *FEEM Working Paper No.56.2002*.
- Rujigrok, E.C.M., (2006) "The Three Economic Values of Cultural Heritage: A Case Study in The Netherlands." *Journal of Cultural Heritage* 7:206-213.
- Snowball, J.D., (2008) *Measuring the Value of Culture: Methods and Examples in Cultural Economics*. Berlin:Springer-Varleg Berlin Heidelberg.
- Subanti, S., (2013) "Pengukuran Manfaat Ekonomi Obyek Wisata Rawapening Kabupaten Semarang dengan Pendekatan Model Biaya Perjalanan, Valuasi Kontingensi, dan Choice Model". *Prosiding Seminar Nasional Statistika*: Universitas Diponegoro.
- Sugriani, F. (2012) Nilai Ekonomi Museum Ullen Sentalu dengan Travel Cost dan Contingent Valuation Method Tahun 2012. Tesis: Universitas Gadjah Mada.
- Supriyono, A. (2009) Valuasi Ekonomi Museum Purbakala Sangiran Sragen dengan Menggunakan Pendekatan Travel Cost Method. Tesis: Universitas Gadjah Mada.
- Suseno, B.H, (2011) Penilaian Ekonomi Giri Sasana Menumbing dengan Pendekatan Kombinasi Travel Cost dan Contingent Behaviour Method. Tesis: Universitas Gadjah Mada.
- Syahdin, A., Patunru. A.A. (2012) "Economic Valuation of World Heritage: A Case Study of Chandi Borobudur." *The Economics of Ecosystems and Biodiversity fo Southeast Asia (ASEAN TEEB)* Bandung: ASEAN.
- Waris, M.A., 2012. Nilai Ekonomi Benteng Rotterdam dan Museum La Galigo Kota Makassar: Aplikasi Travel Cost dan Contingent Valuation Methods." Tesis: Universitas Gadjah Mada.

Table 1. Descriptive Statistic

	Travel Cost	Number of Visits	Income	Education Levels (in years)	Age
Mean	203.276,4	2,858	10.492.311	13,63208	37,85
Median	175.000	2	6.000.000	15	37
Maximum	610.000	14	72.000.000	17	70
Minimum	3.500	1	750.000	6	21
<b>Obs</b>	<b>106</b>	<b>106</b>	<b>106</b>	<b>106</b>	<b>106</b>

Table 2. Williness to Pay at Various Scenarios

	Initial WTP	WTP at Enviromental Scenario (I)	WTP at Conservation Scenario (II)	WTP at Facilities Scenario (III)
Mean	42.283	51.028,30	51.575,47	49.113,21
Median	30.000	35.000	35.000	35.000
Maximum	360.000	280.000	298.000	222.000
Minimum	5000	30.000	30.000	30.000
Standart Deviation	48.702,55	51.875	51.835,63	47.658,77
<b>Obs</b>	<b>106</b>	<b>106</b>	<b>106</b>	<b>106</b>

Table 3. TCM and CVM Results

Variables	Methods				
	TCM	CVM			
		Intial	Scenario I	Scenario II	Scenario III
Travel Cost	-1,42E-06* (-3,073526)	0,000000522 (1.248572)	0,000000122 (0.384188)	0,0000000881 (0.288225)	-0,0000000781 (-0.267290)
Income	-2,68E-08* (-4,083153)	0,0000000287* (7.033442)	0,0000000275 * (7.706712)	0,0000000279 * (7.607774)	0,0000000273 * (7.773647)
Age	0,015193* (2,555155)	-0,002298 (-0.119674)	0,000691 (0.044497)	-0,008908 (-0.557341)	-0,006404 (-0.432268)
Education	-0,15788 (-1,231684)	-0,010876*** (-1.749596)	-0,001889 (-0.380755)	-0,002714 (-0.574934)	-0,004481 (-0.966803)
Perceived Quality	1,036292*** (1,772847)	0,572356** (2.365477)	0,182446** (2.563599)	0,219572* (3.174052)	0,166419** (1.913492)
Attraction Substitute	-1,42E-06* (-3,073526)	-	-	-	-

Note: \* statistical significance at  $\alpha$  1%  
 \*\* statistical significance at  $\alpha$  5%  
 \*\*\* statistical significance at  $\alpha$  10%