

## LAMPIRAN

### Lampiran 1

Menunjukkan alat-alat yang di gunakan dalam proses Spray sampai masuk Furnice



Spay Gun Mini



Compresor



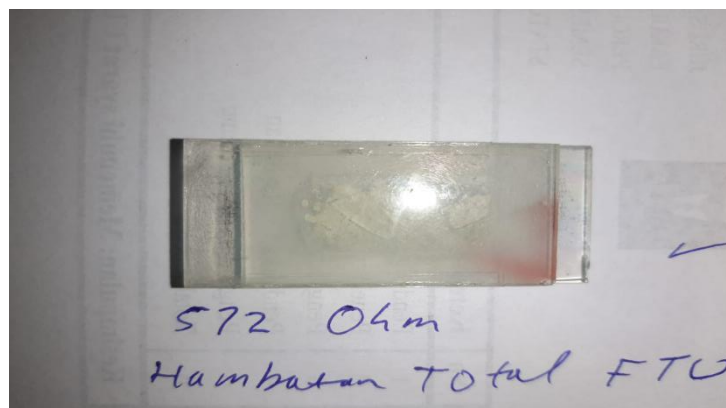
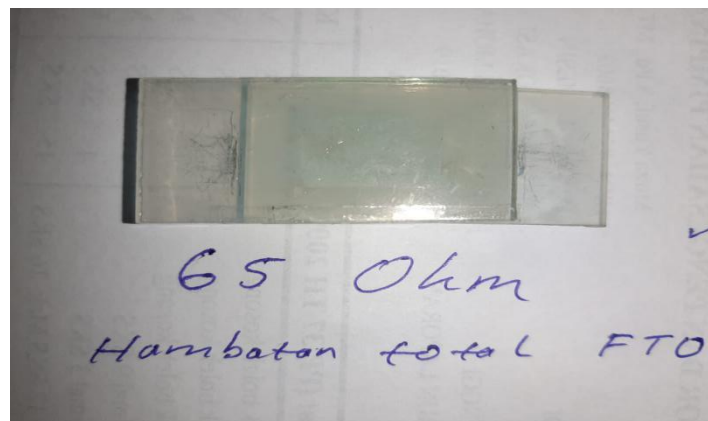
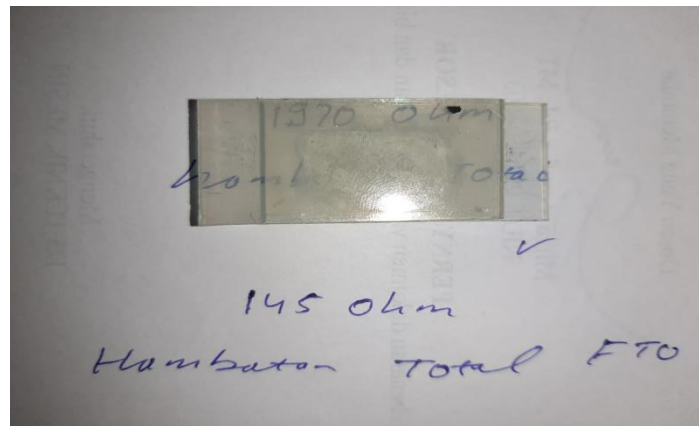
Heater dan Thermoreder



Mesin Furnice

## Lampiran 2

### Data Hambatan di kaca sebelum di Spray



**Data Hambatan setelah di spray**



PVA 0,50 gram



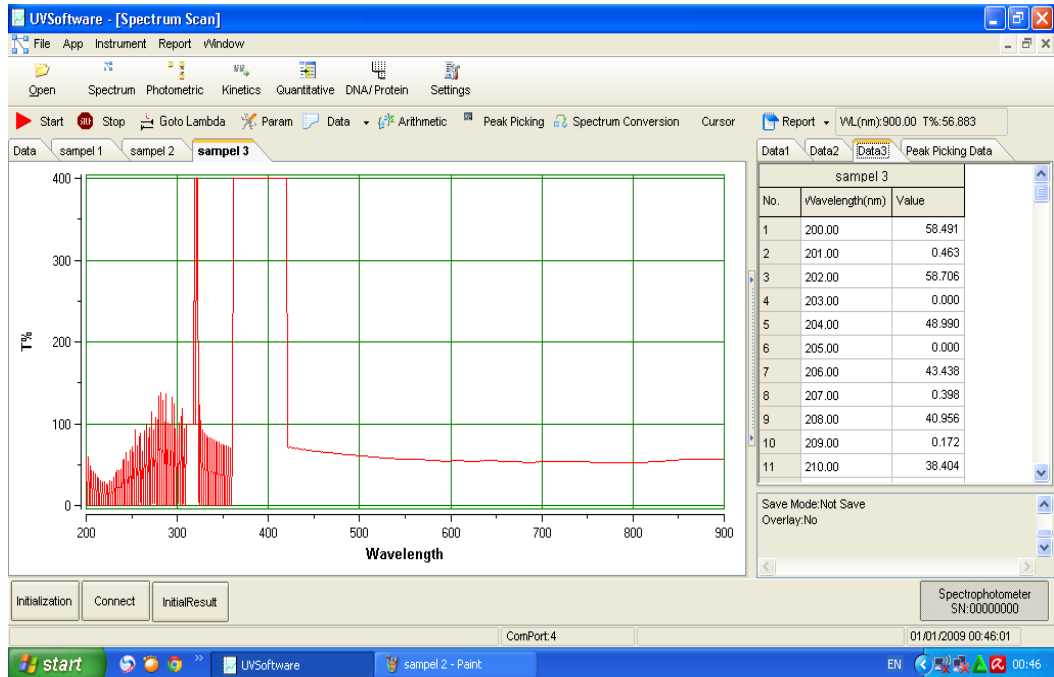
PVA 1 gram



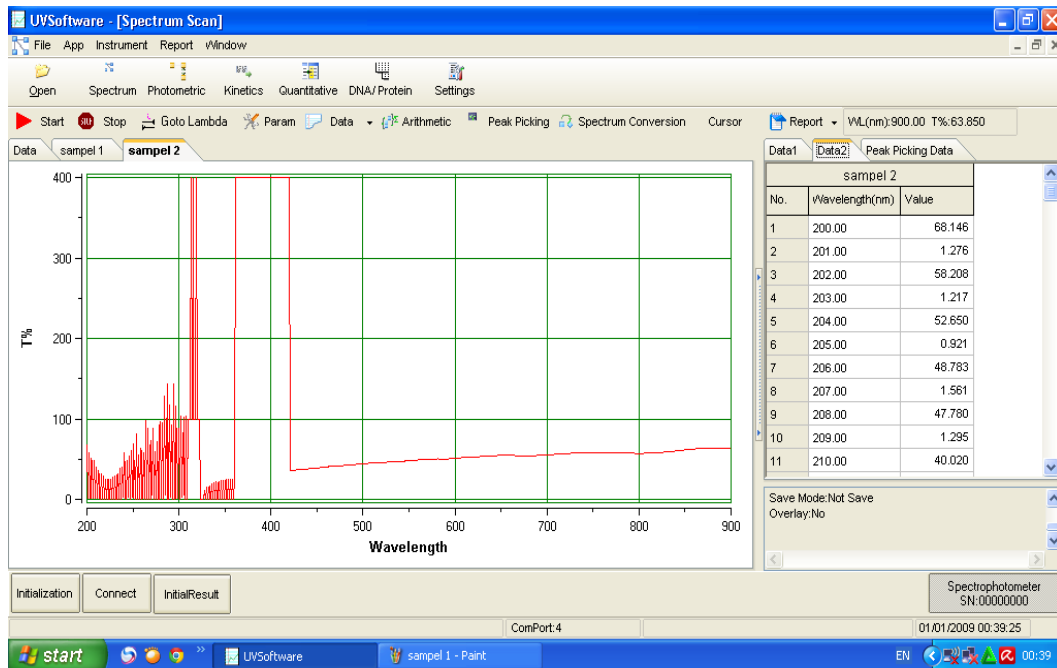
PVA 1,5 gram

### Lampiran 3

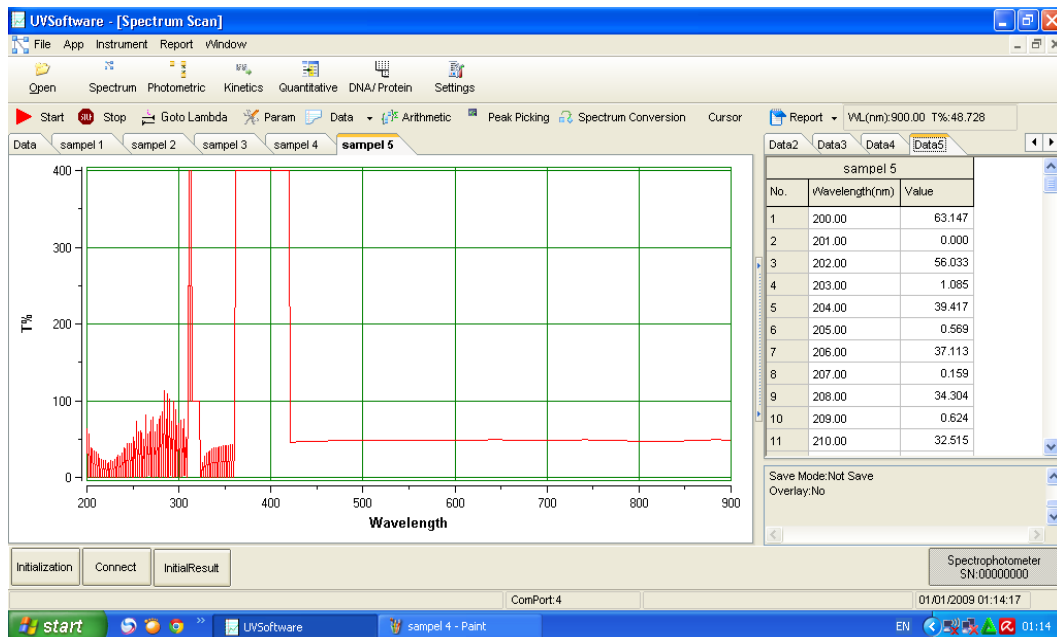
### Pengambilan Data Transmittansi Kaca Konduktif



1,5 Gram T 56,883%



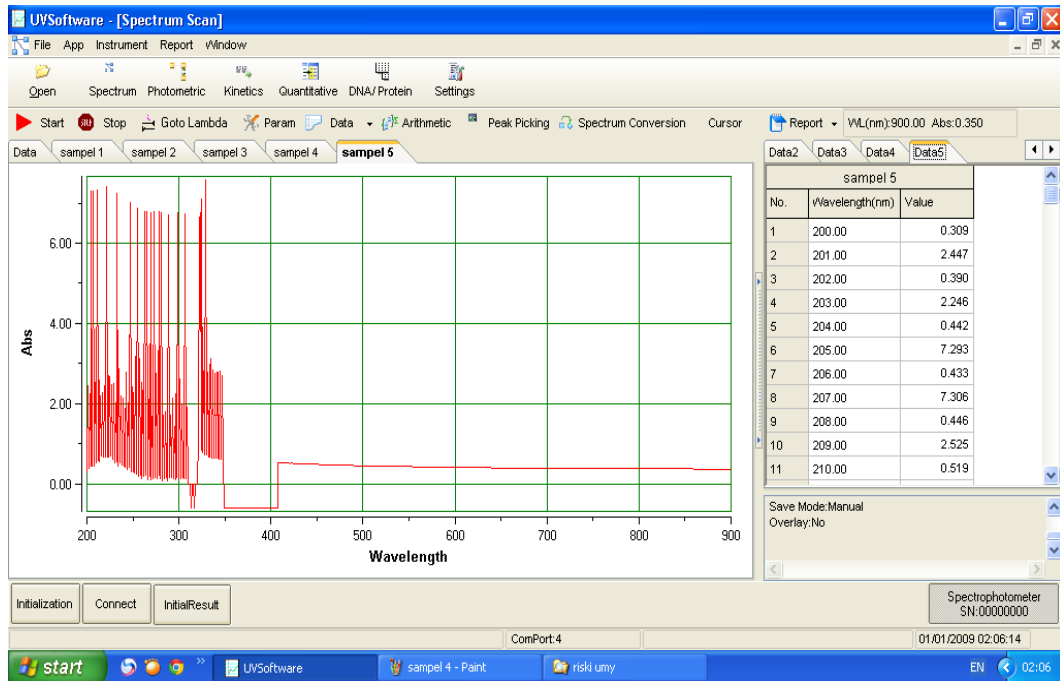
1 Gram T 63,850%



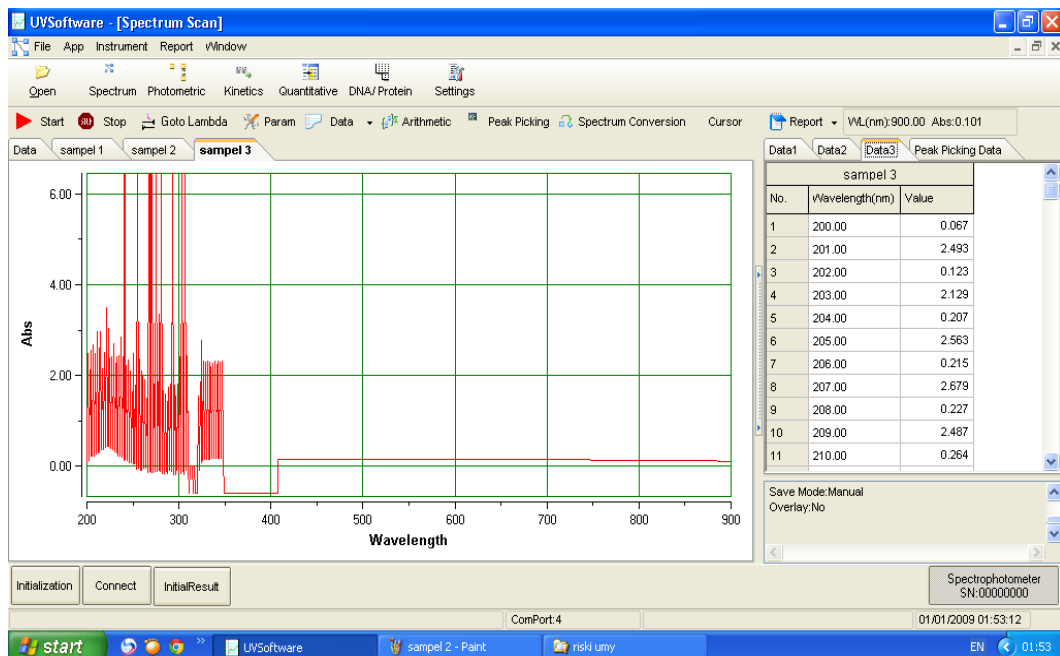
0,50 Gram T 48,728%

## Lampiran 4

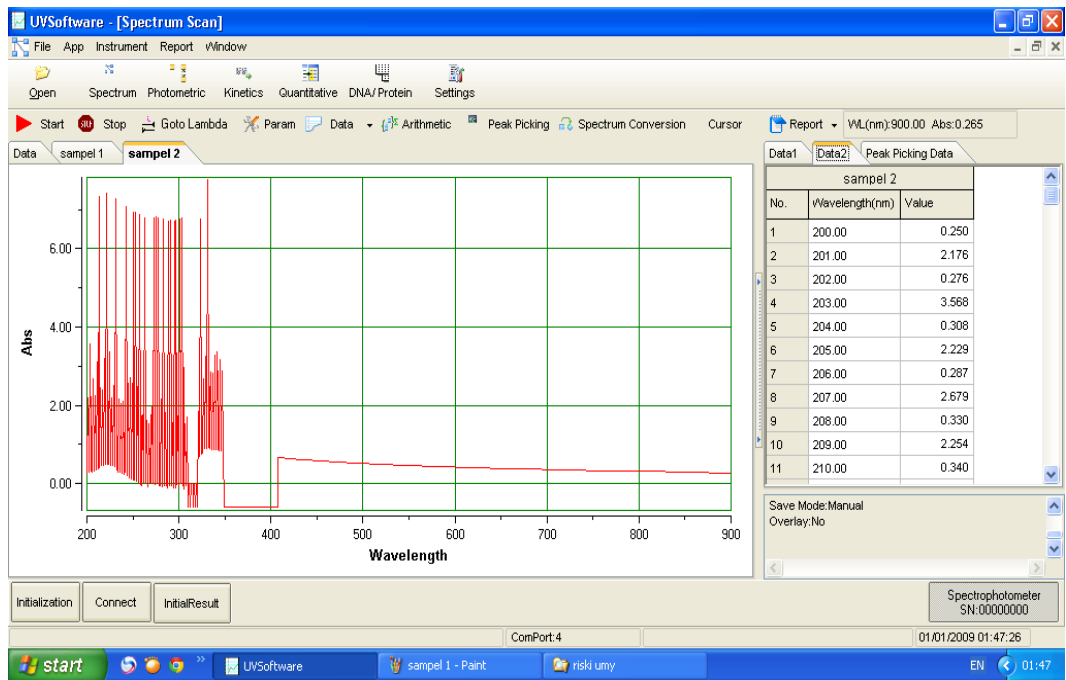
### Pengambilan Data Absorbansi Kaca Konduktif



0,50 Gram ABS 0,350 lm



1 Gram ABS 0,101 lm



1,5 Gram ABS 0,265 lm