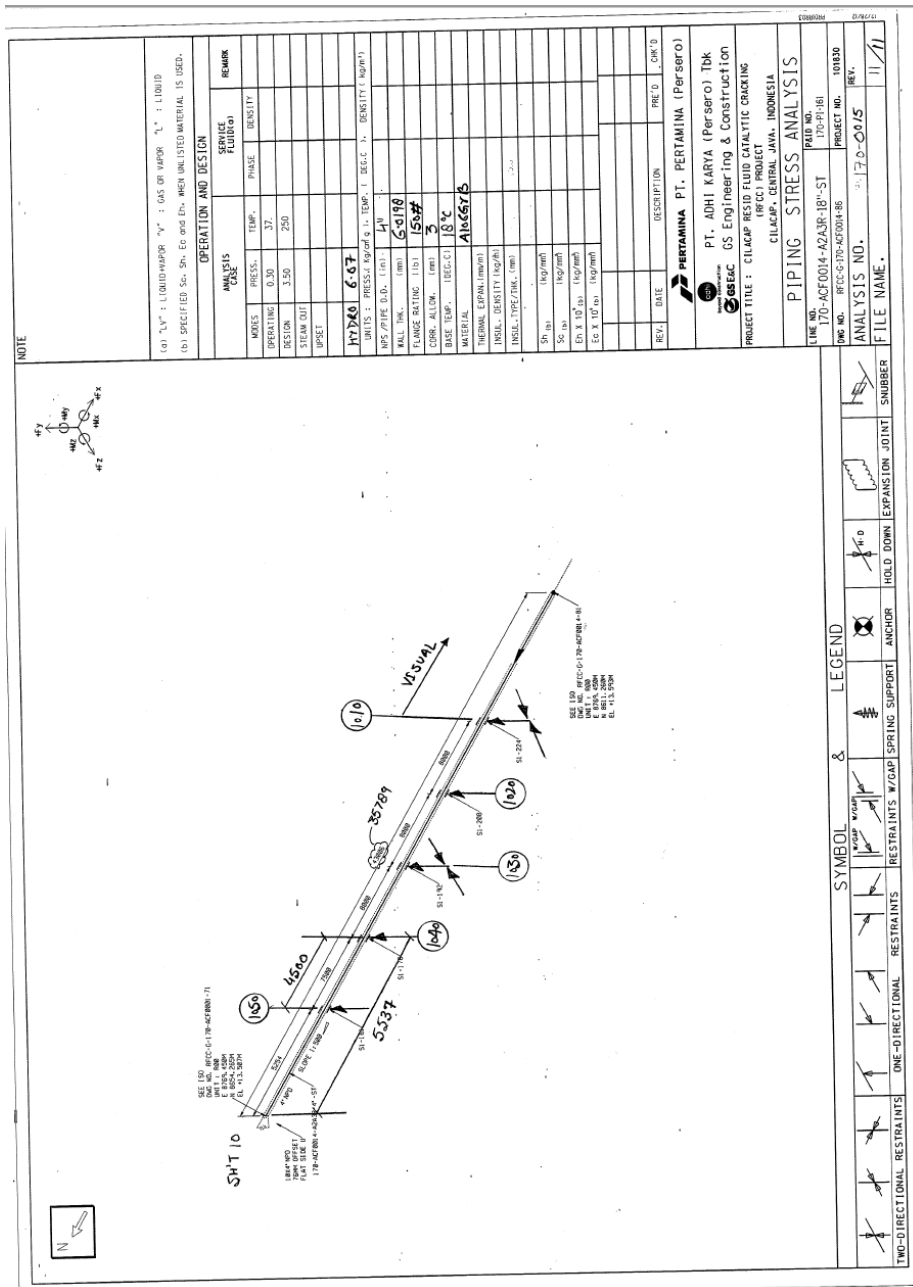
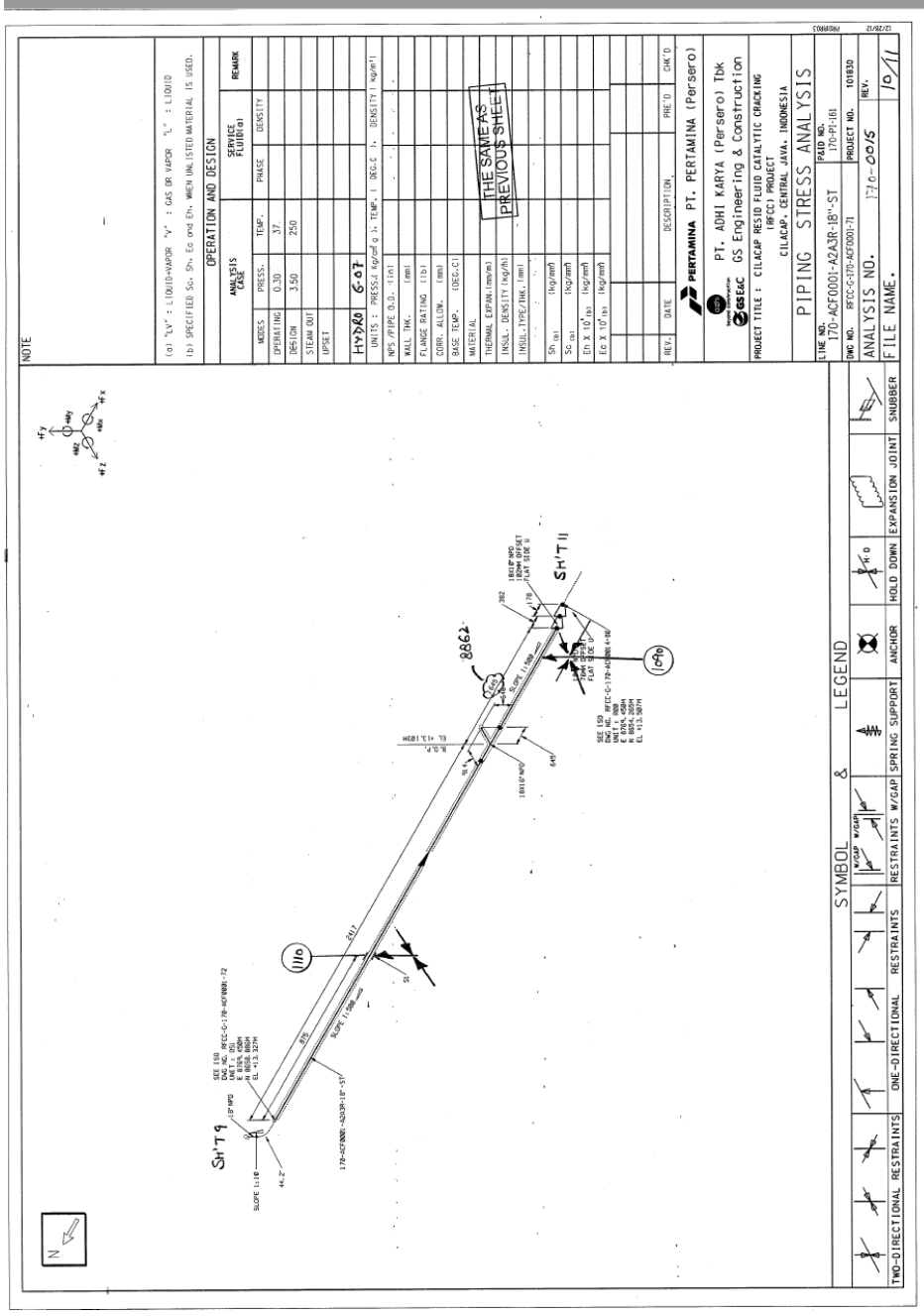


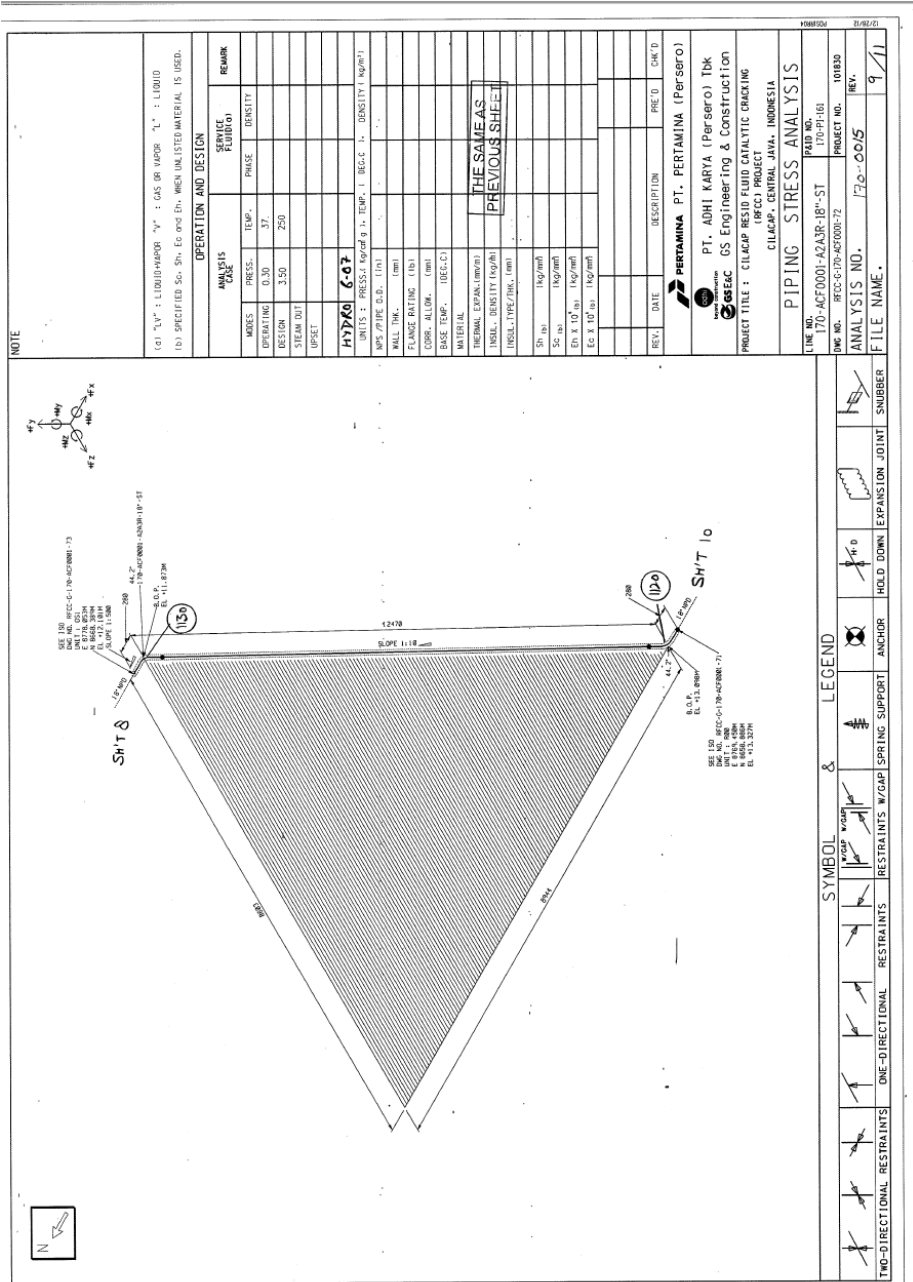
LAMPIRAN



Gambar 5.1 Nomer pemodelan 11



Gambar 5.1 Nomer pemodelan 10



NOTE

- (a) "V" = LIQUID; "W" = GAS OR VAPOR; "L" = LIQUID
- (b) SPECIFIED S.S., ST. ST. AND EN. WELD UNLESS OTHERWISE IS USED.

OPERATION AND DESIGN

ANALYSIS CASE	SERVICE FLUID		REMARK
	PHASE	DENSITY	
MODES	TEMP.		
OPERATING	37.		
DESIGN	250		
STEAM OUT			
UPSET			
HYDRO C-07			
UNIT 2 PRESS. REACTOR 1. TEMP. 1. BEG. 1. DENSITY 1.0000/1			
WPS / PIPE D.D. (IN)			
WALL THK. (MM)			
FLANGE RATING (Tb)			
CORR. ALLOW. (mm)			
BASE TEMP. (DEG.C)			
MATERIAL			
INTERNAL CORN. (mm)			
INSUL. DENSITY (kg/m ³)			
INSUL. TYPE / THK. (mm)			
THE SAME AS PREVIOUS SHEET			
SP. WT. (kg/m ³)			
SP. WT. (lb/ft ³)			
EN. X 10 ⁻³ (J)			
EN. X 10 ⁻³ (Btu)			

REV.	DATE	DESCRIPTION	PRE'D	CHK'D

PT. PERTAMINA PT. PERTAMINA (Persero) Tbk

PT. ADHI KARYA (Persero) Tbk

GS Engineering & Construction

PROJECT TITLE : CILACAP RESID FLUID CATALYTIC CRACKING (FRCC) PROJECT

CILACAP, CENTRAL JAVA, INDONESIA

PIPING STRESS ANALYSIS

LINE NO. 170-ACFF0001-A2A3R-1B"-5T

REV. NO. 170-P161

PROJECT NO. 101830

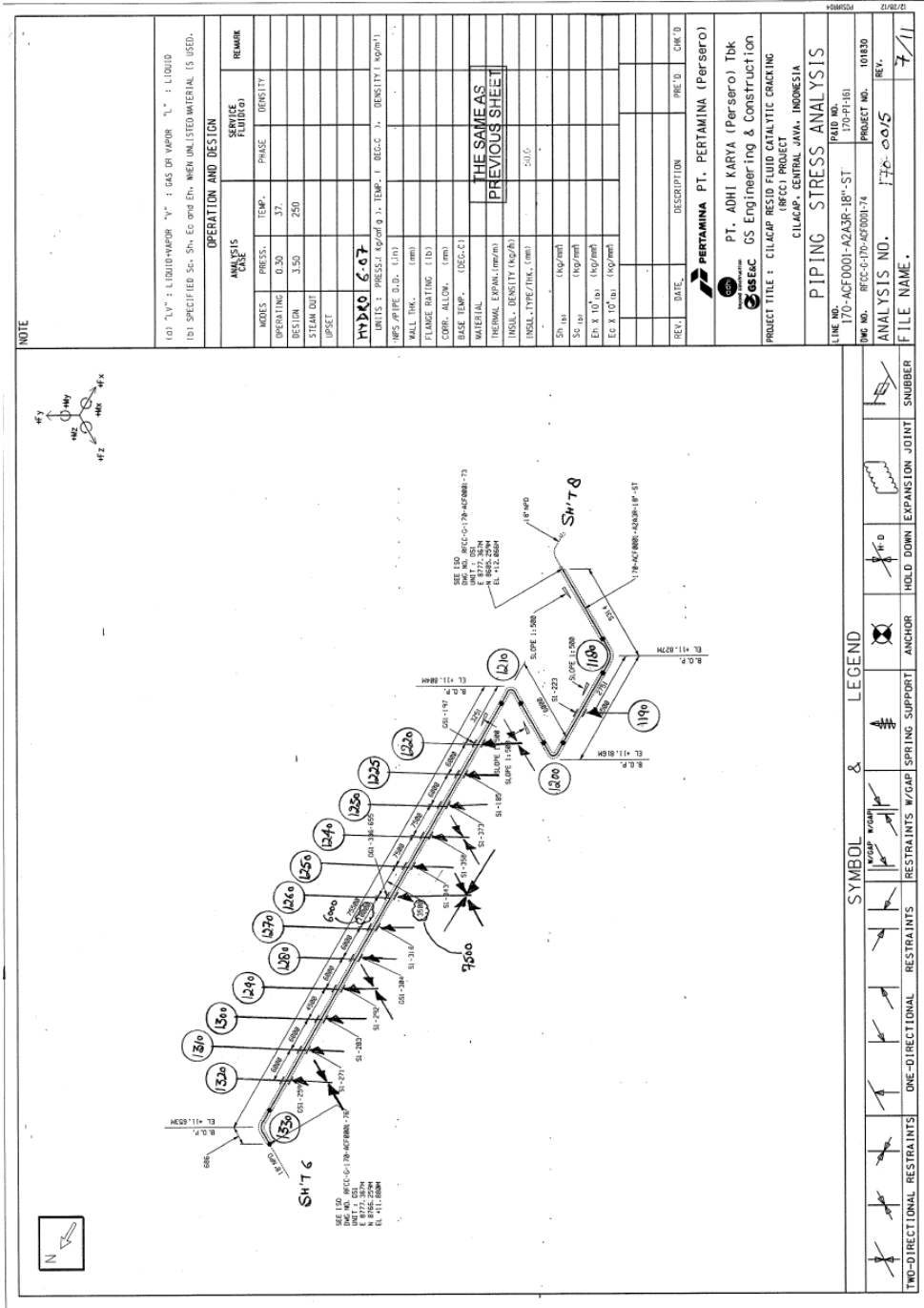
ANALYSIS NO. 170-0015

REV. 9/11

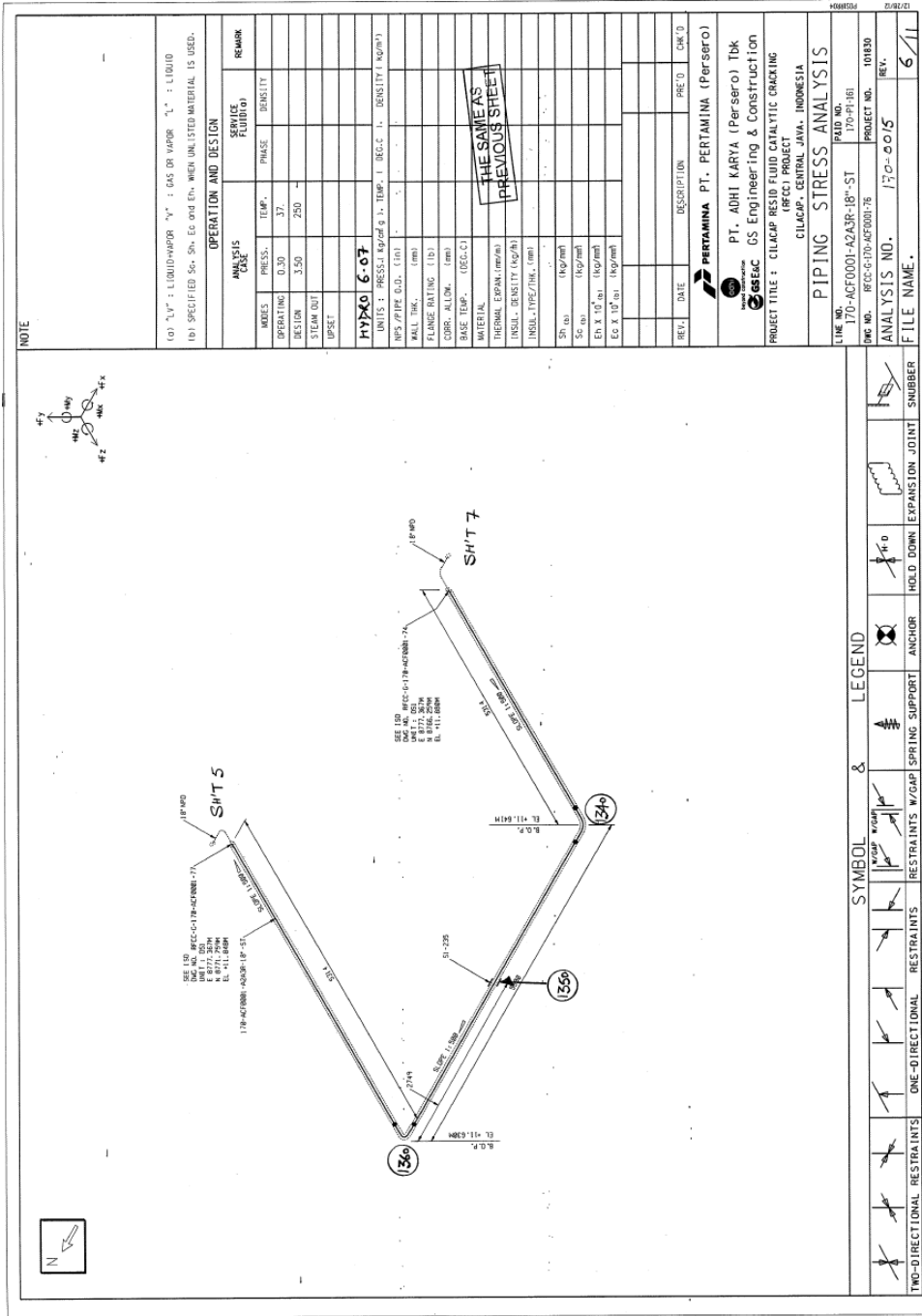
SYMBOL & LEGEND

SYMBOL	LEGEND
	TWO-DIRECTIONAL RESTRAINTS
	ONE-DIRECTIONAL RESTRAINTS
	RESTRAINTS W/GAP
	SPRING SUPPORT
	ANCHOR
	HOLD DOWN
	EXPANSION JOINT
	SNUBBER

Gambar 5.1 Nomer pemodelan 9

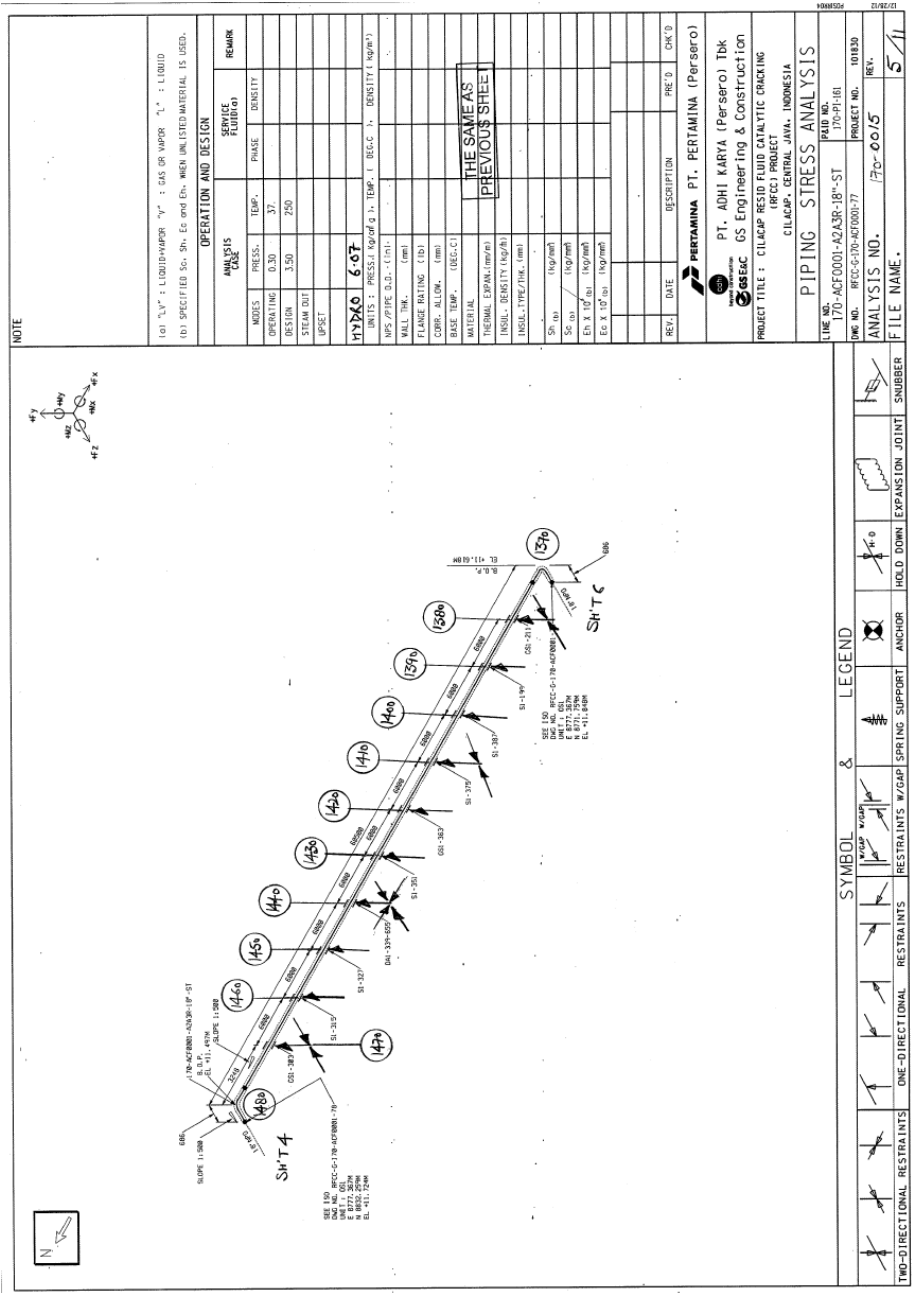


Gambar 5.1 Nomer pemodelan 7

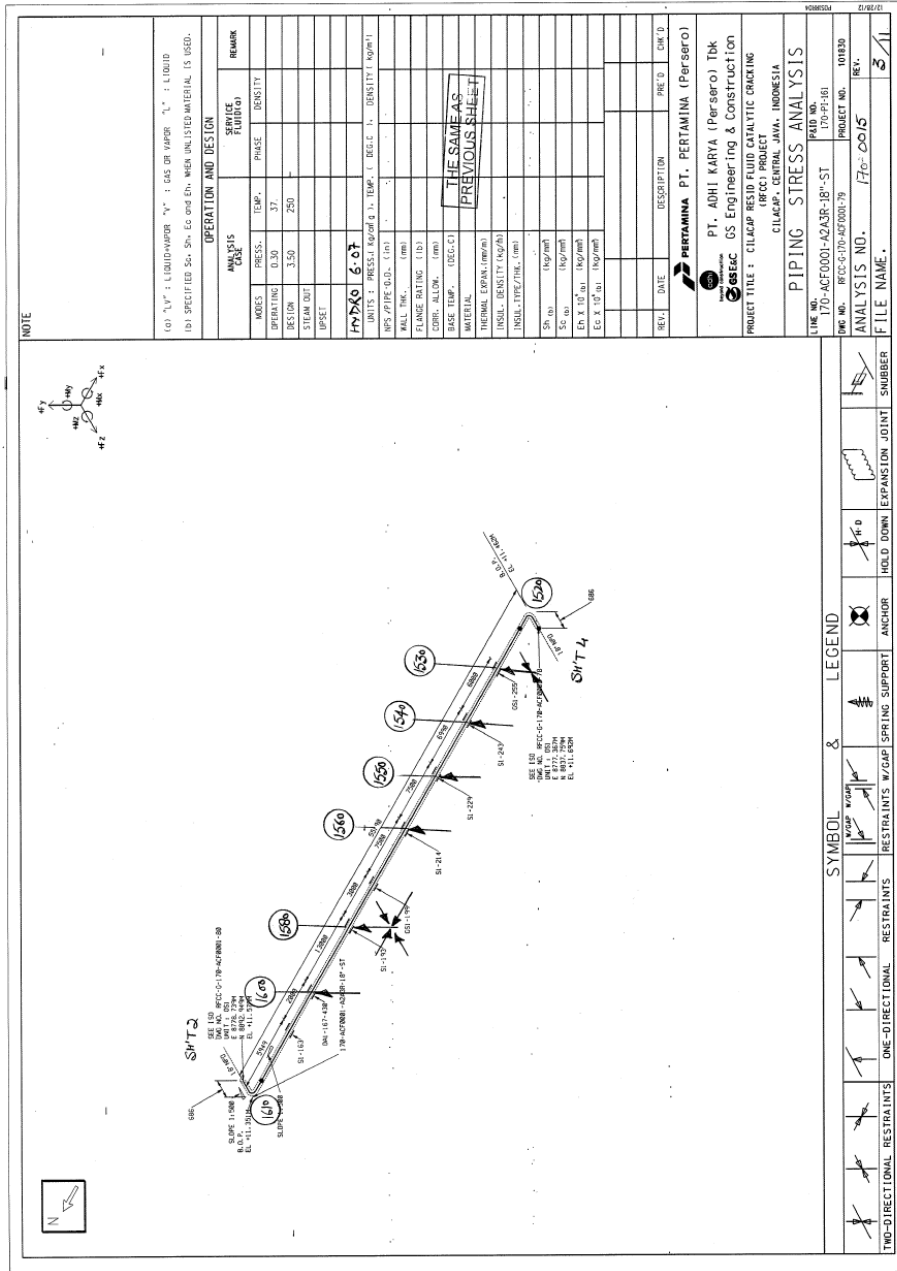


PERTAMINA PT. PERTAMINA (Persero)	
PT. ADHI KARYA (Persero) Tbk	
CS Engineering & Construction	
PROJECT TITLE : CILACAP RESID FLUID CATALYTIC CRACKING	
CILACAP - CENTRAL JAVA - INDONESIA	
PIPING STRESS ANALYSIS	
LINE NO.	170-AQF0001-AZASR-1B*-ST
FIELD NO.	170-P1B1
DRG NO.	REC-G-170-AQF001-76
PROJECT NO.	101830
ANALYSIS NO.	170-015
REV.	6/11
FILE NAME.	

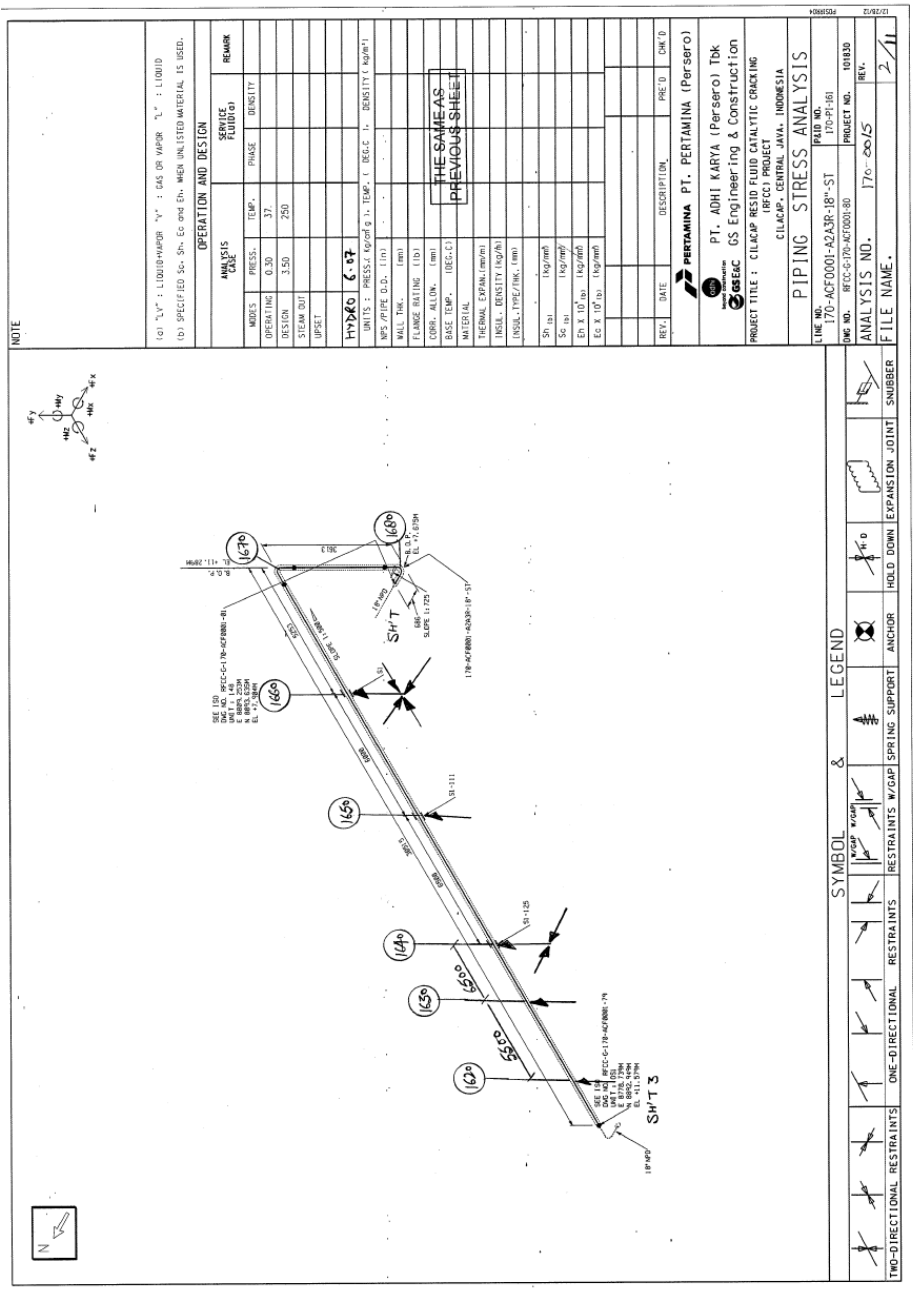
Gambar 5.1 Nomer pemodelan 6



Gambar 5.1 Nomer pemodelan 5



Gambar 5.9 Nomer pemodelan 3



Gambar 5.10 Nomer pemodelan 2

