

LAMPIRAN

Hasil race


Live Results
#KMIIE 2018



PROTOTYPE LISTRIK

Race Number	Team Name	Attempt 1	Attempt 2	Attempt 3	Attempt 4	Attempt 5	Best Result
401	BENKREAT SUPER MILEAGE TEAM	DNF	DNF	DNF	79.76 KM/KWH		79.76 KM/KWH
402	BIMA CANGKAWANGSA	221.83 KM/KWH	DNF	DNF	DNF	DNF	221.83 KM/KWH
403	BUMI SILIWANGI 1	182.87 KM/KWH	324.10 KM/KWH	DNF	267.29 KM/KWH	402.99 KM/KWH	402.99 KM/KWH
404	CHAPENS						
405	DRIYARKARA RACING TIM	DNF	DNF	DNF			
406	GREEN PEANUT	155.25 KM/KWH	197.91 KM/KWH	191.65 KM/KWH	198.78 KM/KWH		198.78 KM/KWH
407	KHAD ECO TIM	102.43 KM/KWH	105.19 KM/KWH	106.85 KM/KWH			106.85 KM/KWH
408	MALEM DIWA PROTO	192.531 KM/KWH	222.31 KM/KWH	177.108 KM/KWH	248.94 KM/KWH	239.08 KM/KWH	248.94 KM/KWH
409	MANTILEM TIM 2	128.408 KM/KWH	118.79 KM/KWH	127.05 KM/KWH	149.69 KM/KWH		149.69 KM/KWH

Live Results
#KMIIE 2018



PROTOTYPE LISTRIK

Race Number	Team Name	Attempt 1	Attempt 2	Attempt 3	Attempt 4	Attempt 5	Best Result
410	MORAN TIM 2	DNF	136.38 KM/KWH				136.38 KM/KWH
411	OTORITER PLV TADULAKO						
412	RAKATA ELECTRIC	DNF	83.31 KM/KWH	210.97 KM/KWH			210.97 KM/KWH
413	TIM APATTE 62 BRAWIJAYA	331.62 KM/KWH	305.95 KM/KWH	304.45 KM/KWH			331.62 KM/KWH
414	TIM ELANG 1	DNF	DNF	DNF	DNF		
415	TIM HORAS	DNF	DNF	119.17 KM/KWH	DNF		119.17 KM/KWH
416	TIM SEMAR UGM	DNF	DNF	DNF	237.26 KM/KWH		237.26 KM/KWH
417	TITEN PROTOTYPE	DNF	298.25 KM/KWH				298.25 KM/KWH

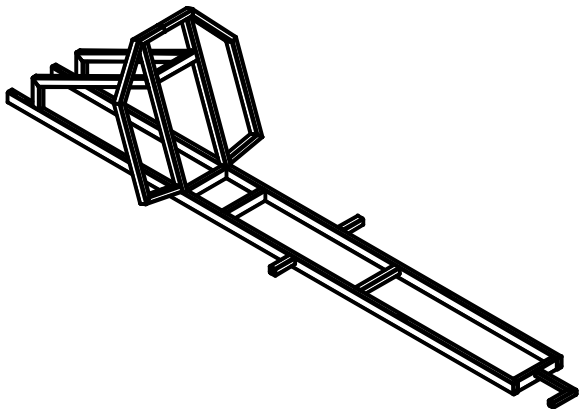
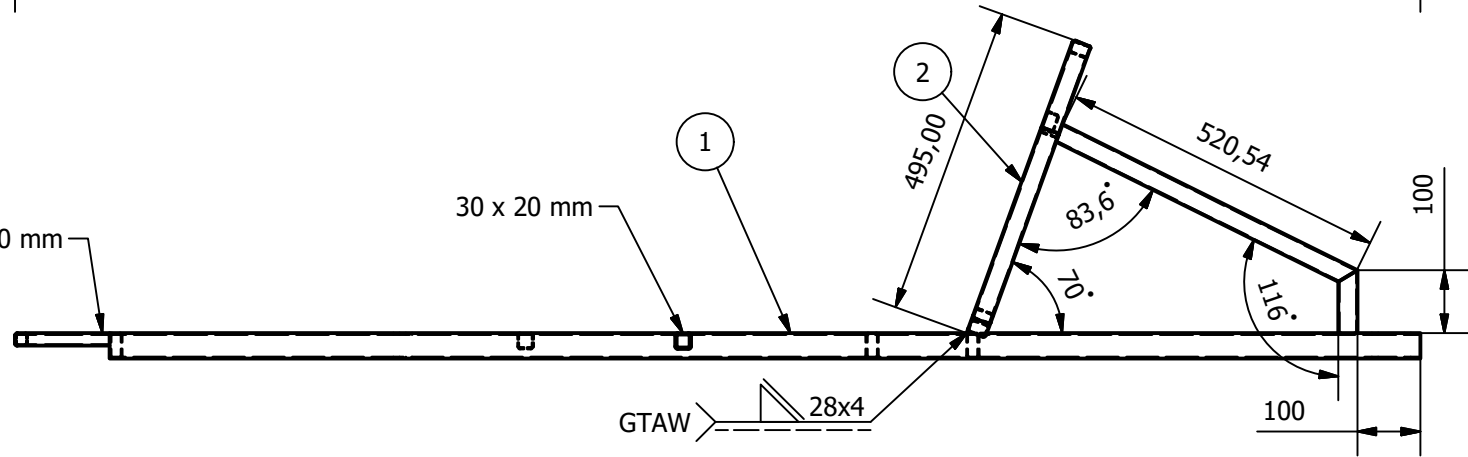
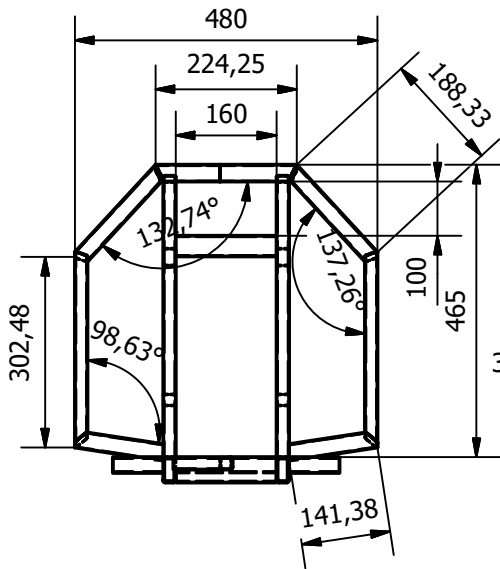
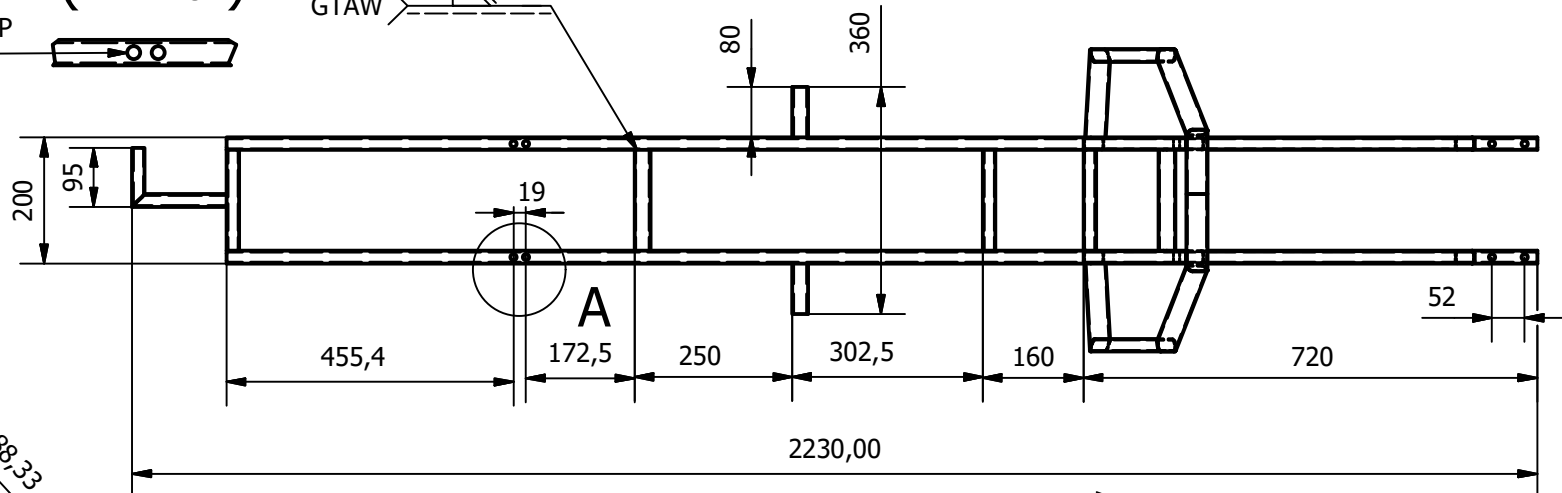
Lampiran Gambar Teknik

A (1:6)

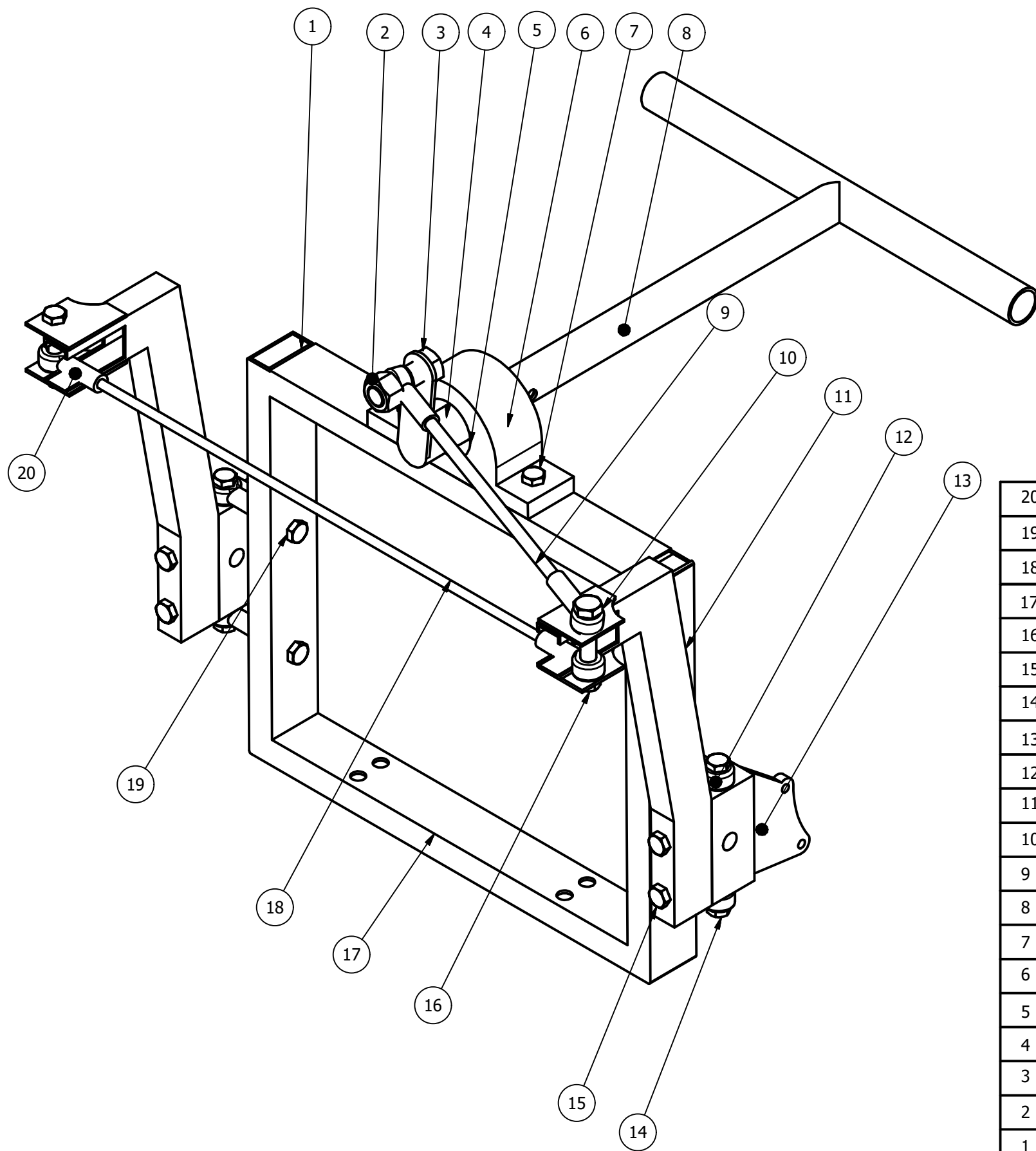
Ø10,00 -40,00 DEEP



GTAW



2	1	Roll Bar	Aluminium 6061	30 x 20 x 1,5 mm	Rectangular Hollow
1	1	Rangka Utama	Aluminium 6061	40 x 20 x 2 mm	Rectangular Hollow
NO	JML	NAMA	BAHAN	UKURAN	KETERANGAN
	Skala : 1 : 12		Digambar : Faiz Evan Saputra		Keterangan :
	Satuan : mm		No. Mhs : 20150130141		
	Tanggal : 03 Agustus 2018		Diperiksa : Ir Aris Widyo N, M.T.,Ph.D		
Teknik Mesin UMY			Rangka		NO : 1 A4



20	4	Ball Joint Linkage	Steel	6 mm	PHS 6 ASB
19	4	Baut Steering Shaft	Steel	M8x50	
18	1	Tie Rod Stabilizer	Steel		
17	1	Steering Shaft	Aluminium 6061		Rectangular Hollow w/Filler
16	2	Mur Linkage	Steel	M8	
15	4	Baut Steering Arm	Steel	M6x50	
14	4	Baut Bracket Wheel Front	Steel	M8x30	
13	2	Bracket Wheel Front	Aluminium 6061		
12	4	Ball Joint Bracket Roda	Steel	8 mm	PHS 8 ASB
11	2	Steering Arm	Steel		
10	2	Baut Linkage	Steel	M8x50	
9	1	Arm Connector	Aluminium 6061		Rectangular Hollow
8	1	Setang	Stainless Steel		
7	2	Baut Bracket Steering	Steel	M6x45	
6	1	Steering Bracket	Kayu Balsa		
5	1	Bearing	Steel		SKF Roller Bearing
4	1	Link Steering	Aluminium 6061		
3	1	Baut Link	Steel	M8x30	
2	1	Mur Link	Steel	M8	
1	3	Filler	Kayu Balsa		
NO	JML	NAMA	BAHAN	UKURAN	KETERANGAN



Skala : 1 : 8

Satuan : mm

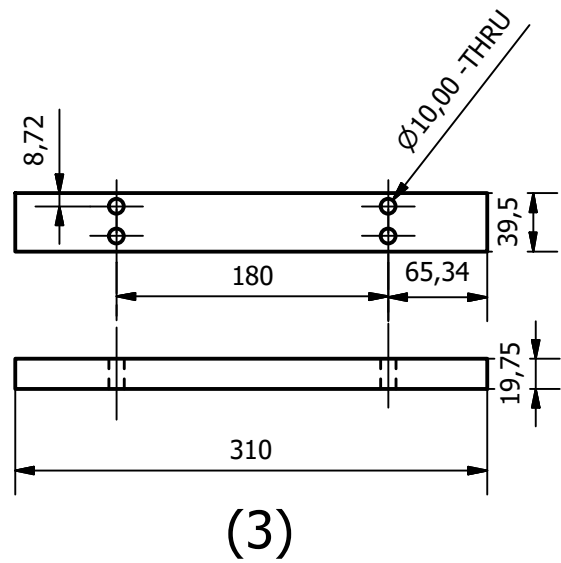
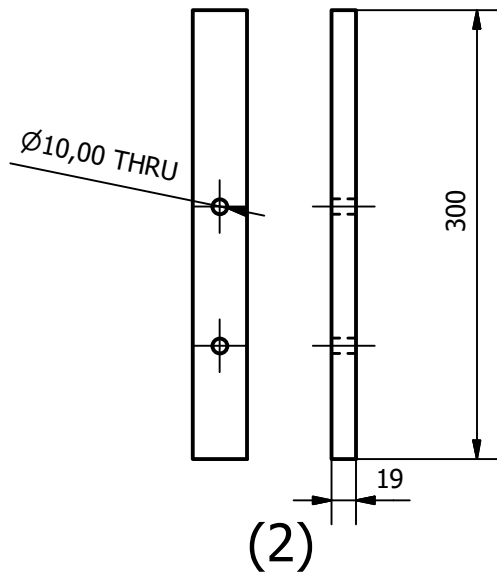
Tanggal : 03 Agustus 2018

Digambar : Faiz Evan Saputra

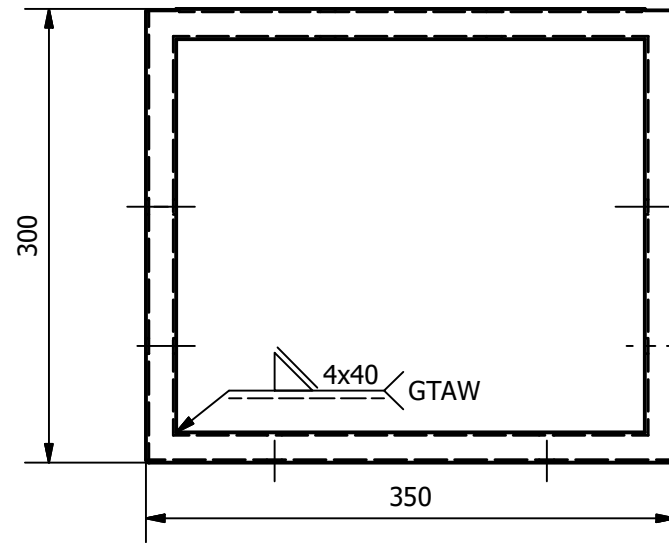
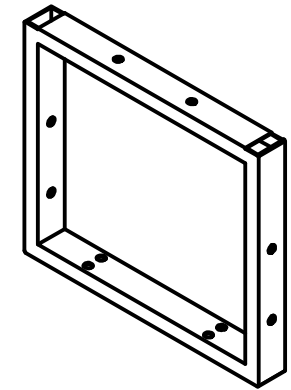
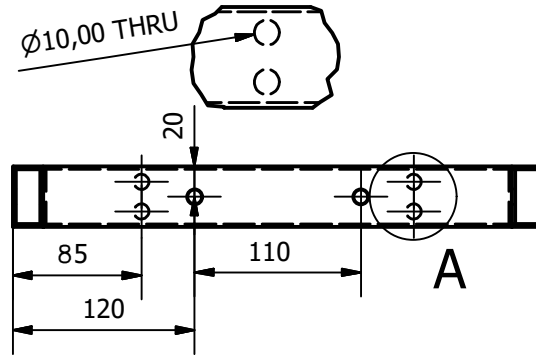
No. Mhs : 20150130141

Diperiksa : Ir Aris Widyo N, M.T.,Ph.D

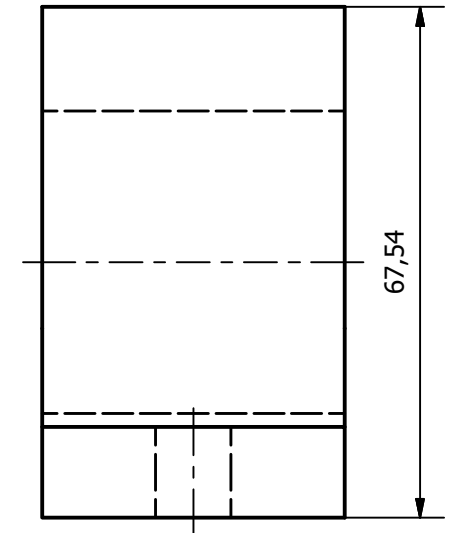
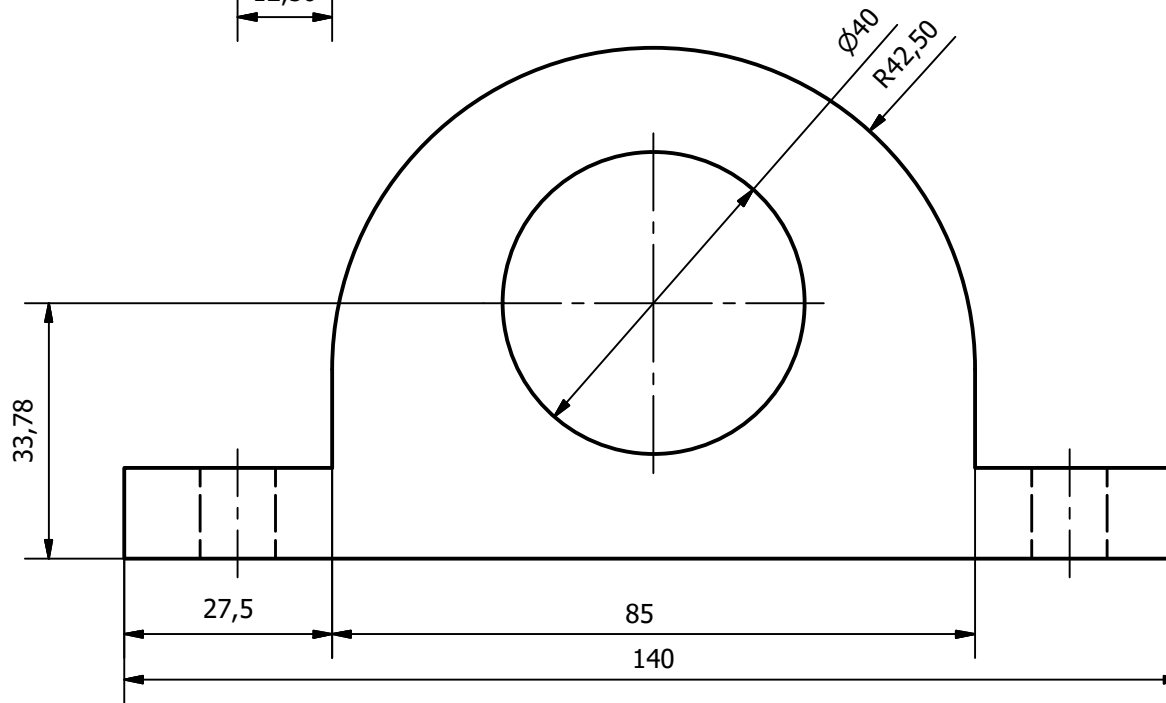
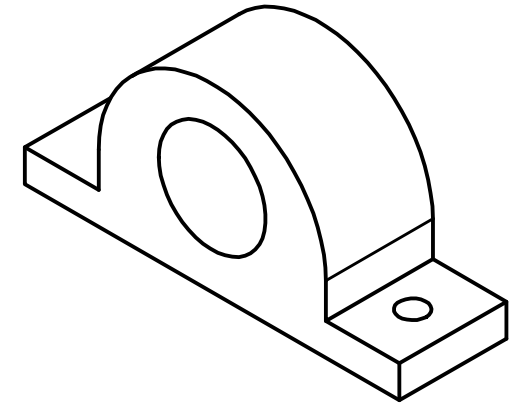
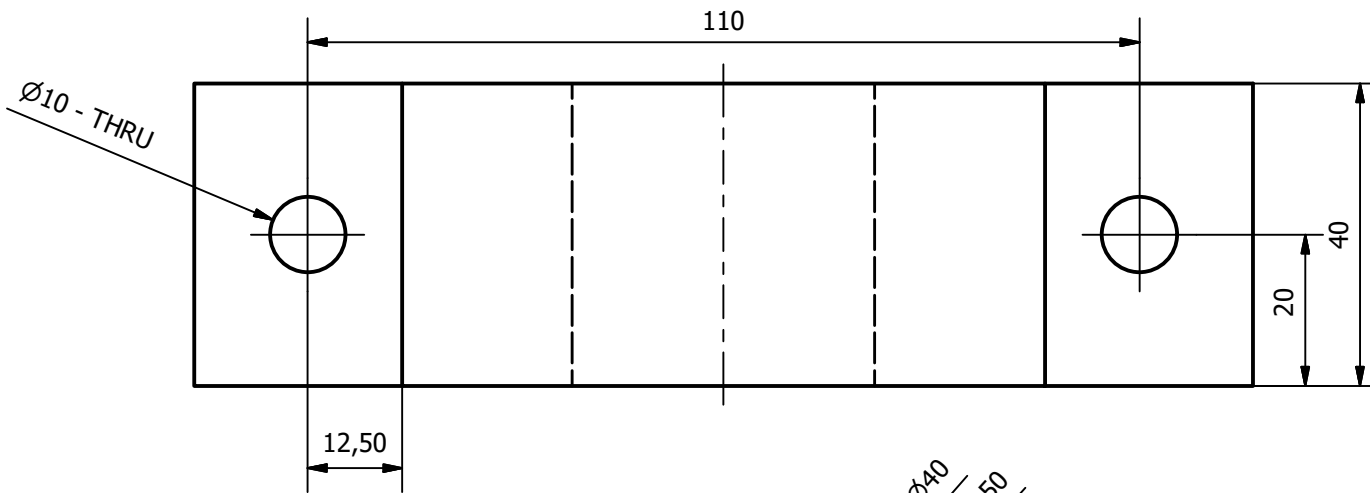
Keterangan :



A (1:3)

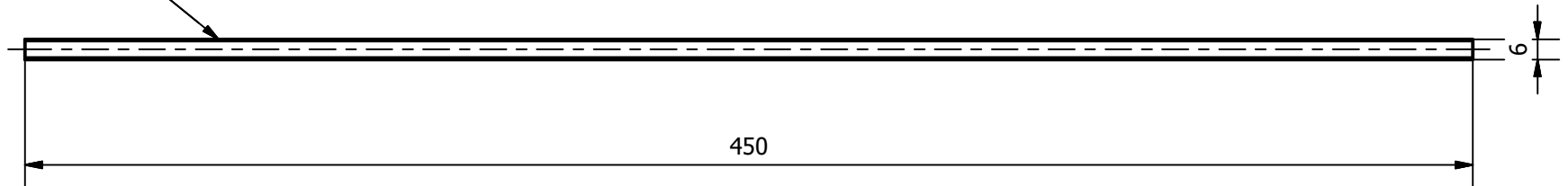


3	1	Filler 2	Kayu Balsa		
2	2	Filler 1	Kayu Balsa		
1	1	Steering Shaft	Aluminium 6061		
NO	JML	NAMA	BAHAN	UKURAN	KETERANGAN
	Skala : 1 : 8		Digambar : Faiz Evan Saputra		Keterangan :
	Satuan : mm		No. Mhs : 20150130141		
	Tanggal : 03 Agustus 2018		Diperiksa : Ir Aris Widyo N, M.T.,Ph.D		
Teknik Mesin UMY			Steering Shaft		NO : 3
					A4



1	1	Steering Bracket	Kayu Balsa		
NO	JML	NAMA	BAHAN	UKURAN	KETERANGAN
	Skala : 1 : 1		Digambar : Faiz Evan Saputra		Keterangan :
	Satuan : mm		No. Mhs : 20150130141		
	Tanggal : 03 Agustus 2018		Diperiksa : Ir Aris Widyo N, M.T.,Ph.D		
Teknik Mesin UMY			Steering Bracket		NO : 4 A4

M6x1 - 6g Full Thread

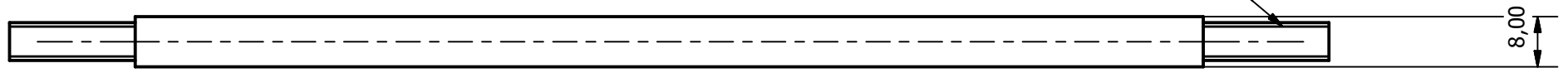


450

6


(1)

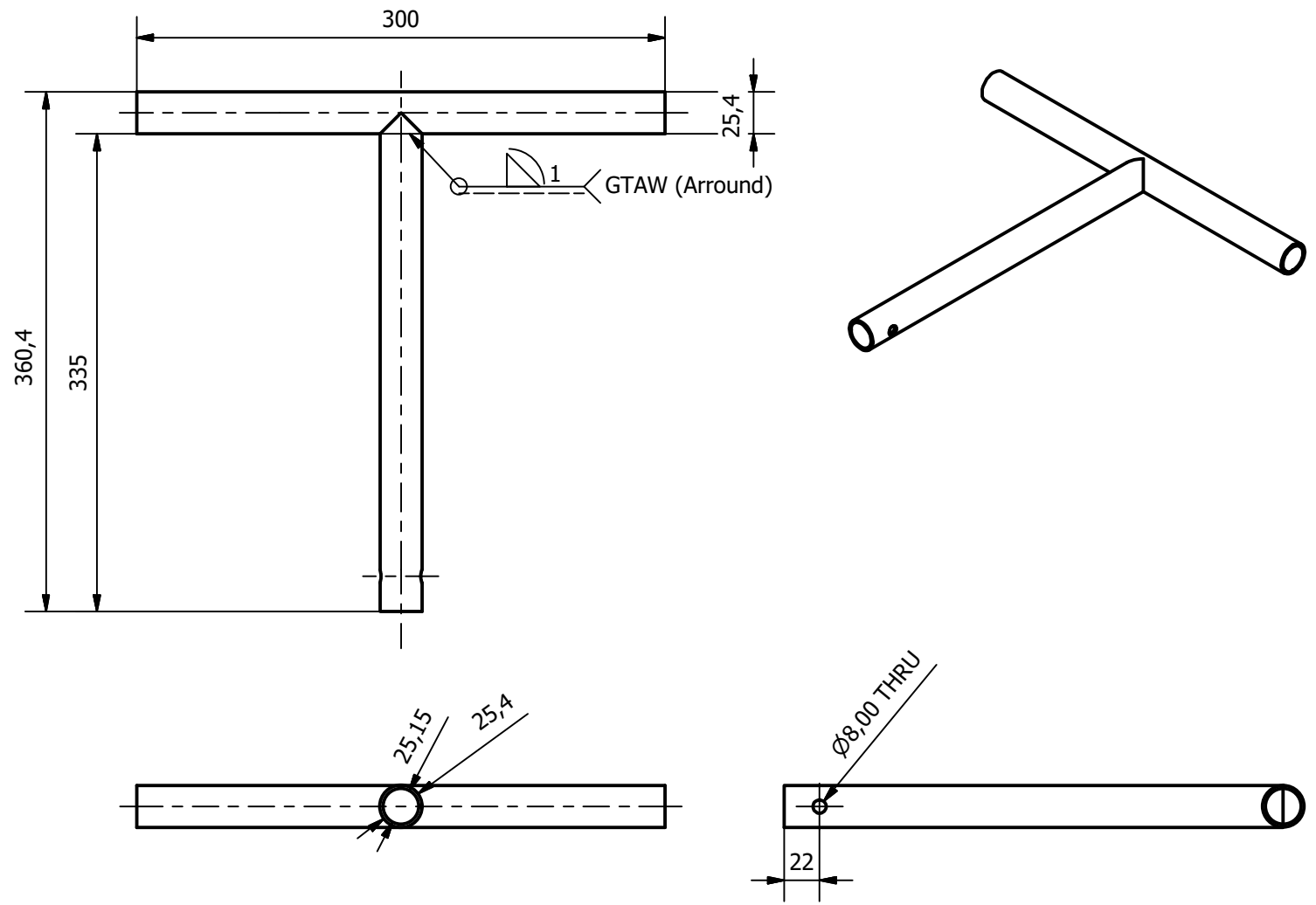
M6x1 - 6g



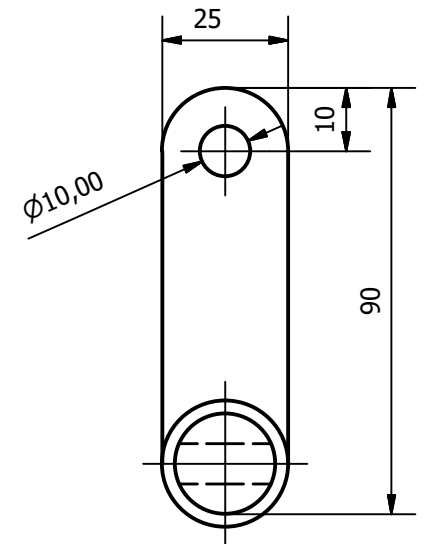
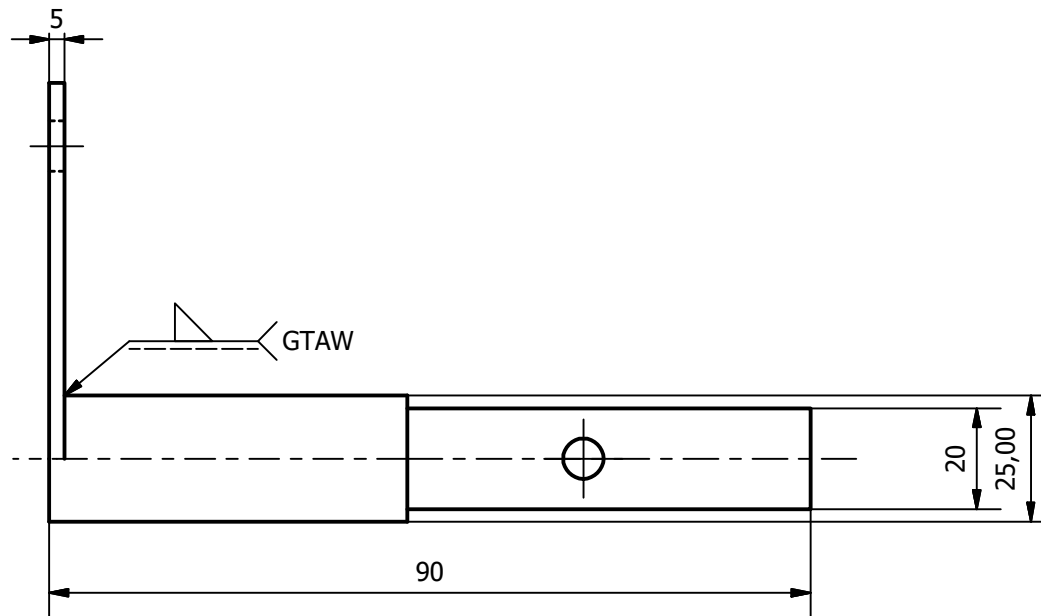
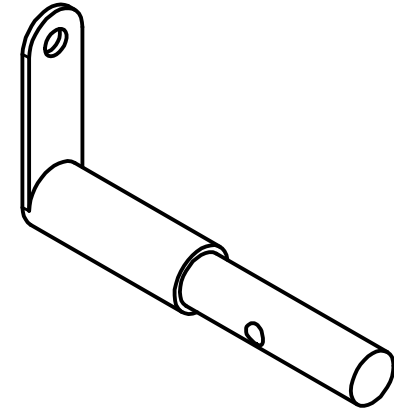
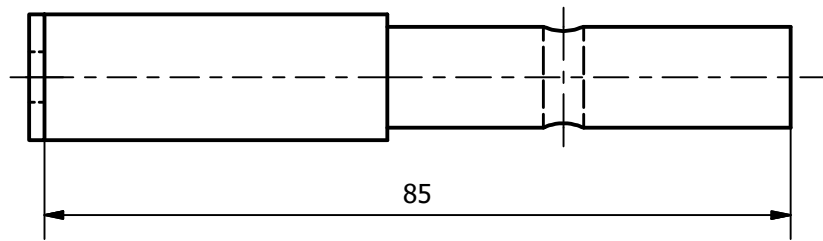
8,00

(2)

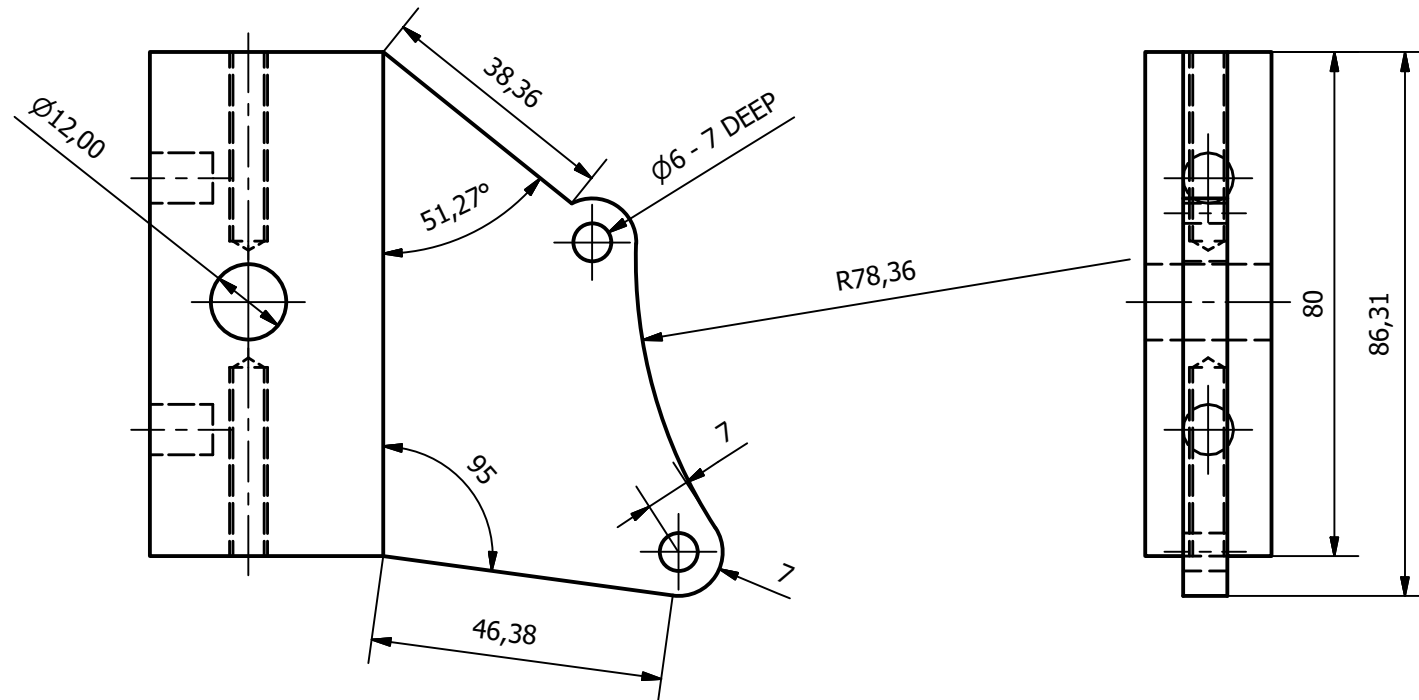
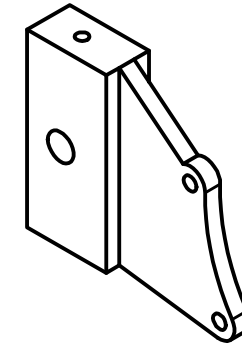
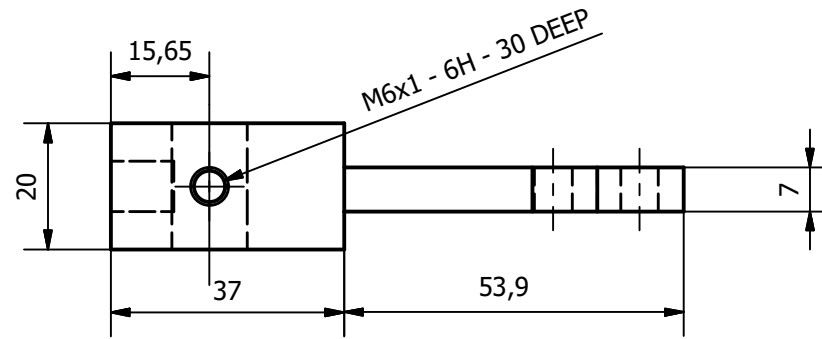
2	1	Arm Connector	Aluminium		
1	1	Tie Rod	Steel		
NO	JML	NAMA	BAHAN	UKURAN	KETERANGAN
	Skala : 1 : 1		Digambar : Faiz Evan Saputra		Keterangan :
	Satuan : mm		No. Mhs : 20150130141		
	Tanggal : 03 Agustus 2018		Diperiksa : Ir Aris Widyo N, M.T.,Ph.D		
Teknik Mesin UMY			Steering Linkage		NO : 5
					A4



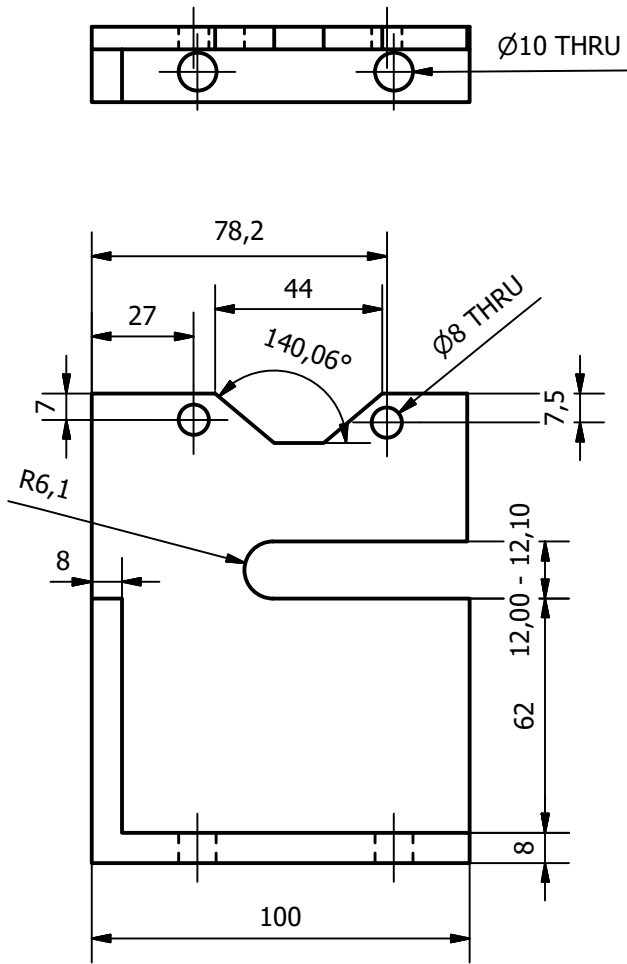
1	1	Setang	Stainless Steel		
NO	JML	NAMA	BAHAN	UKURAN	KETERANGAN
	Skala : 1 : 1		Digambar : Faiz Evan Saputra		Keterangan :
	Satuan : mm		No. Mhs : 20150130141		
	Tanggal : 03 Agustus 2018		Diperiksa : Ir Aris Widyo N, M.T.,Ph.D		
Teknik Mesin UMY			Setang		NO : 6
					A4



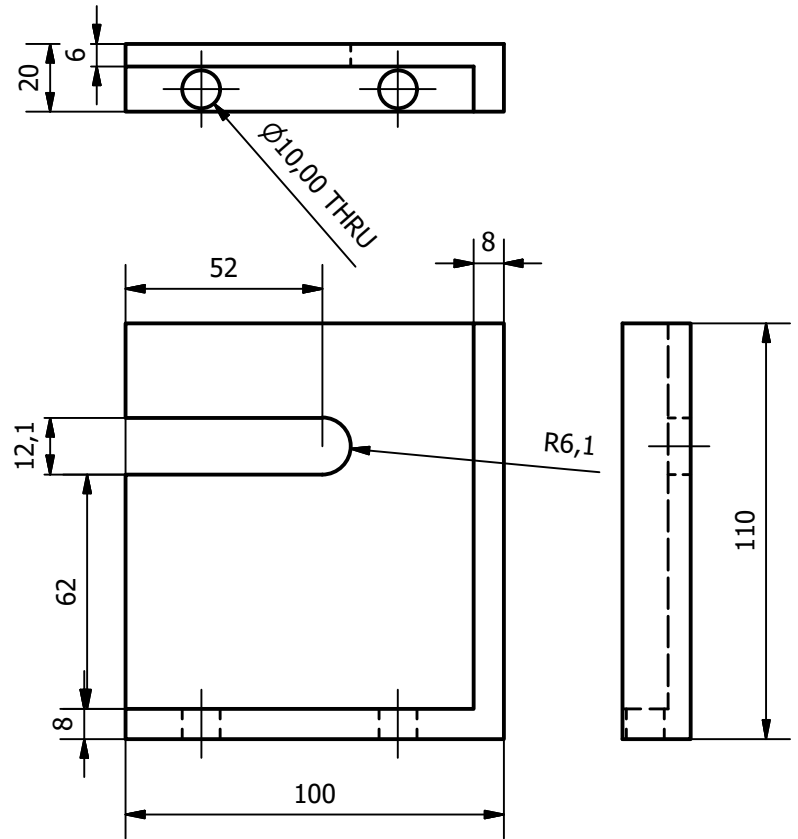
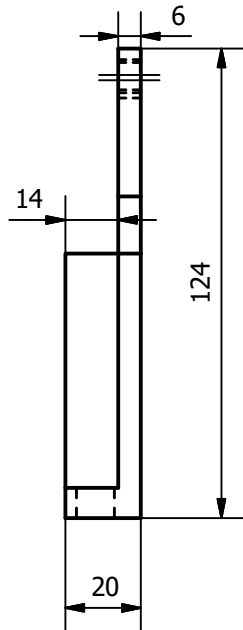
1	1	Link Penghubung	Aluminium		
NO	JML	NAMA	BAHAN	UKURAN	KETERANGAN
	Skala : 1 : 1		Digambar : Faiz Evan Saputra		Keterangan :
	Satuan : mm		No. Mhs : 20150130141		
	Tanggal : 03 Agustus 2018		Diperiksa : Ir Aris Widyo N, M.T.,Ph.D		
Teknik Mesin UMY			Penghubung Link Steering		NO : 7
					A4



1	1	Braket Shaft Front	Aluminium 6061		
NO	JML	NAMA	BAHAN	UKURAN	KETERANGAN
	Skala : 1 : 1,2		Digambar : Faiz Evan Saputra		Keterangan :
	Satuan : mm		No. Mhs : 20150130141		
	Tanggal : 03 Agustus 2018		Diperiksa : Ir Aris Widyo N, M.T.,Ph.D		
Teknik Mesin UMY			Bracket Shaft Front		NO : 8 A4

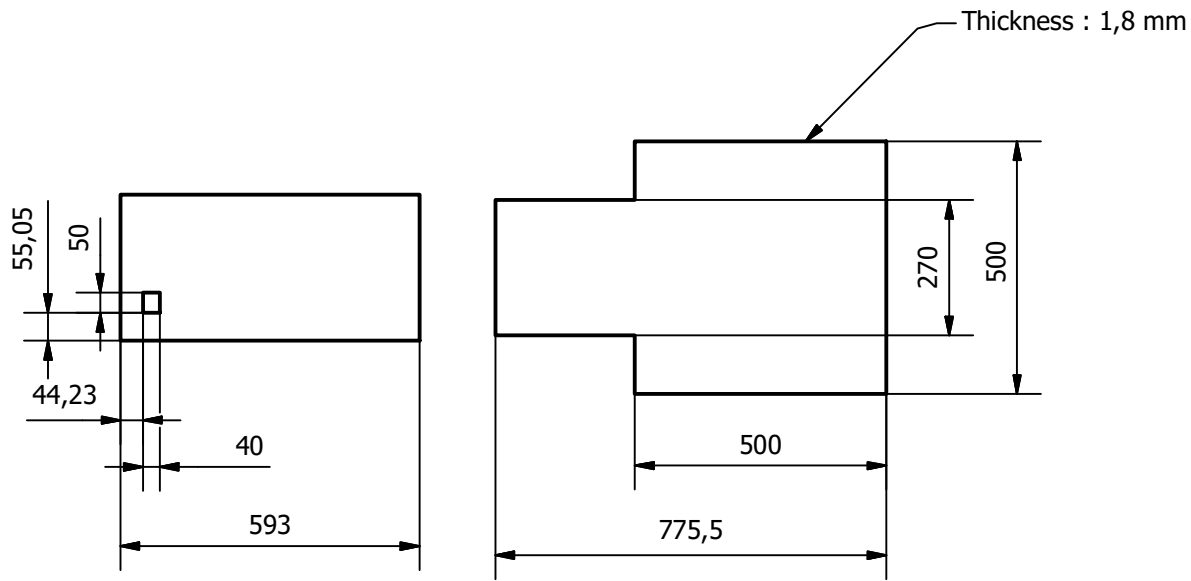


(1)

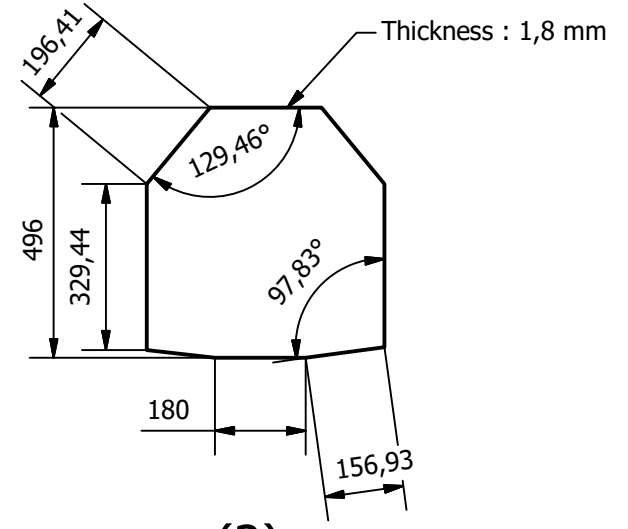


(2)

2	1	Braket Shaft Rear Right	Aluminium 5052		
1	1	Braket Shaft Rear Left	Aluminium 5052		
NO	JML	NAMA	BAHAN	UKURAN	KETERANGAN
	Skala : 1 : 2		Digambar : Faiz Evan Saputra		Keterangan :
	Satuan : mm		No. Mhs : 20150130141		
	Tanggal : 03 Agustus 2018		Diperiksa : Ir Aris Widyo N, M.T.,Ph.D		
Teknik Mesin UMY			Bracket Shaft Rear		NO : 9
					A4

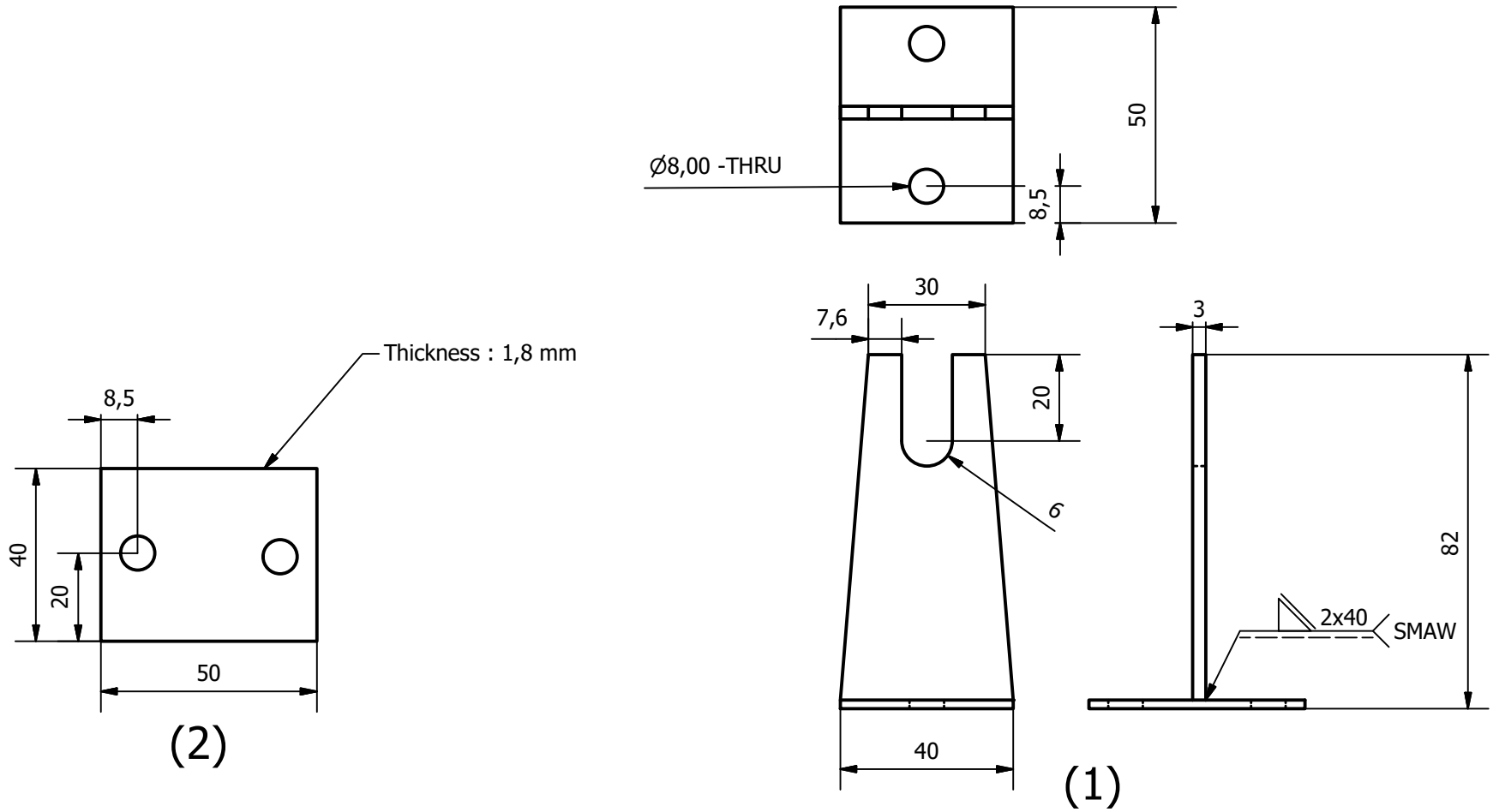


(1)

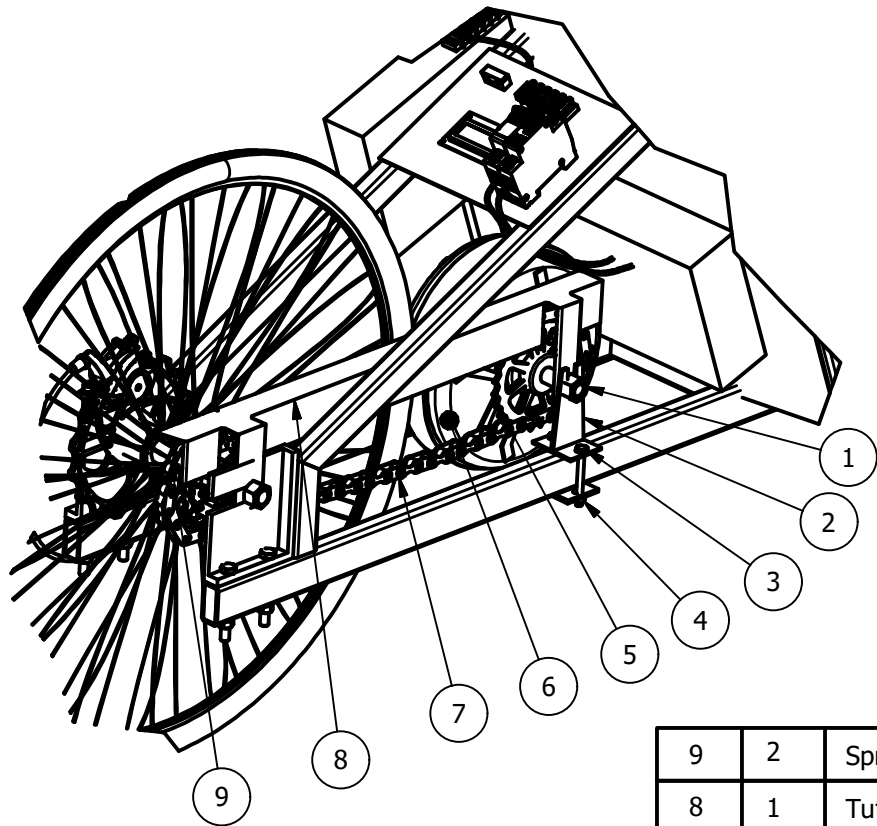


(2)

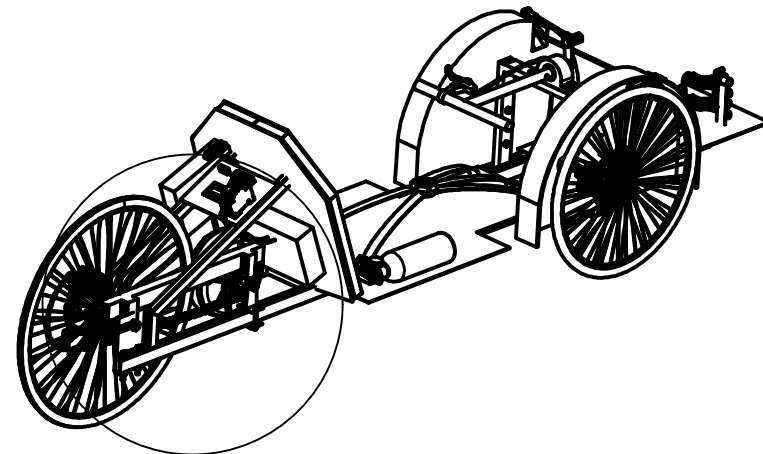
2	1	Rear Floor	Aluminium		Sheet Metal
1	1	Front Floor	Aluminium		Sheet Metal
NO	JML	NAMA	BAHAN	UKURAN	KETERANGAN
	Skala : 1 : 15		Digambar : Faiz Evan Saputra		Keterangan :
	Satuan : mm		No. Mhs : 20150130141		
	Tanggal : 03 Agustus 2018		Diperiksa : Ir Aris Widyo N, M.T.,Ph.D		
Teknik Mesin UMY			Floor Plate		NO : 10 A4



2	2	Plat Pengikat	Steel		
1	2	Bracket Motor	Steel		
NO	JML	NAMA	BAHAN	UKURAN	KETERANGAN
	Skala : 1 : 2		Digambar : Faiz Evan Saputra		Keterangan :
	Satuan : mm		No. Mhs : 20150130141		
	Tanggal : 03 Agustus 2018		Diperiksa : Ir Aris Widyo N, M.T.,Ph.D		
Teknik Mesin UMY			Bracket Motor		NO : 11 A4

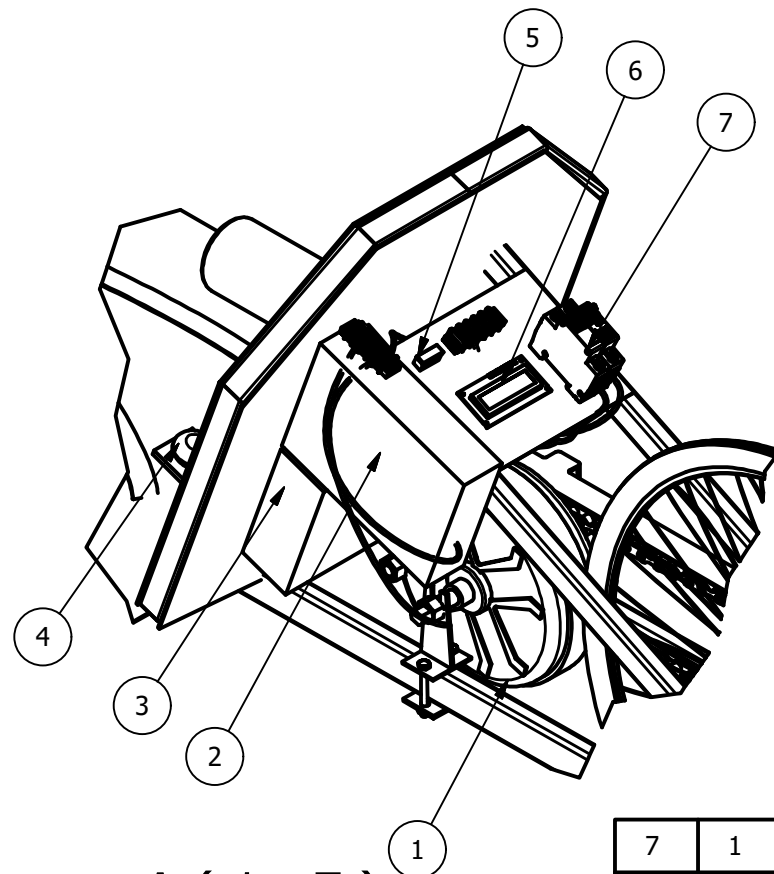


A (1:7)

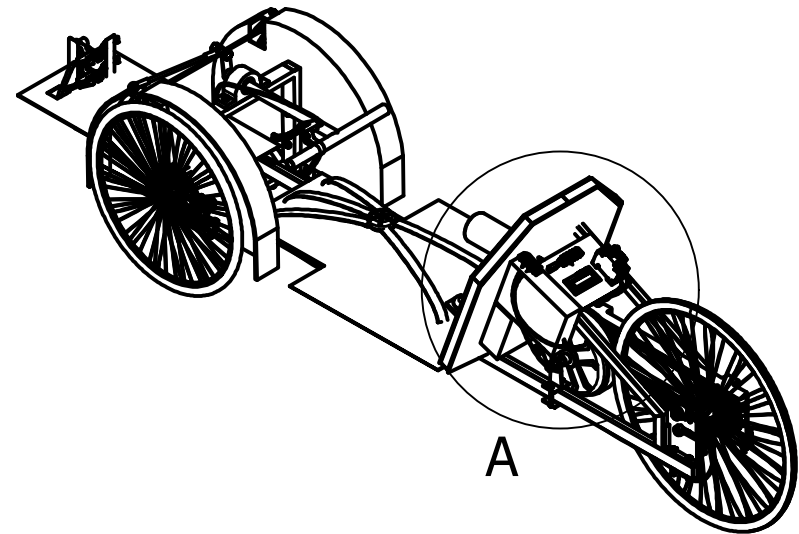


A

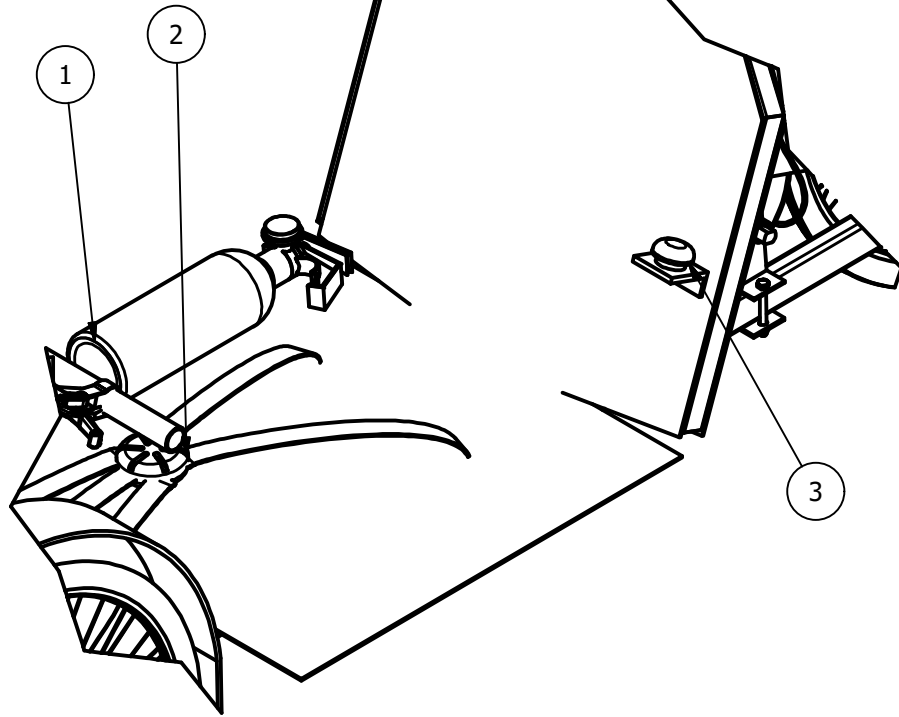
9	2	Sprocket Bertingkat	Steel		Shimano MTB 7 Speed
8	1	Tutup Transmisi	Acrilic		
7	2	Roller Chain	Steel		
6	1	Motor Listrik	Steel		BLDC hub Motor 1000 W
5	1	Single Sprocket	Steel		Shimano
4	4	Mur Bracket Motor	Steel	M8	
3	4	Baut Bracket Motor	Steel	M8x50	
2	1	Bracket Motor	Steel		
1	2	Mur Motor	Steel	M10	
NO	JML	NAMA	BAHAN	UKURAN	KETERANGAN
	Skala : 1 : 7		Digambar : Faiz Evan Saputra		Keterangan :
	Satuan : mm		No. Mhs : 20150130141		
	Tanggal : 03 Agustus 2018		Diperiksa : Ir Aris Widyo N, M.T.,Ph.D		
Teknik Mesin UMY			Assembly Transmisi		NO : 12 A4



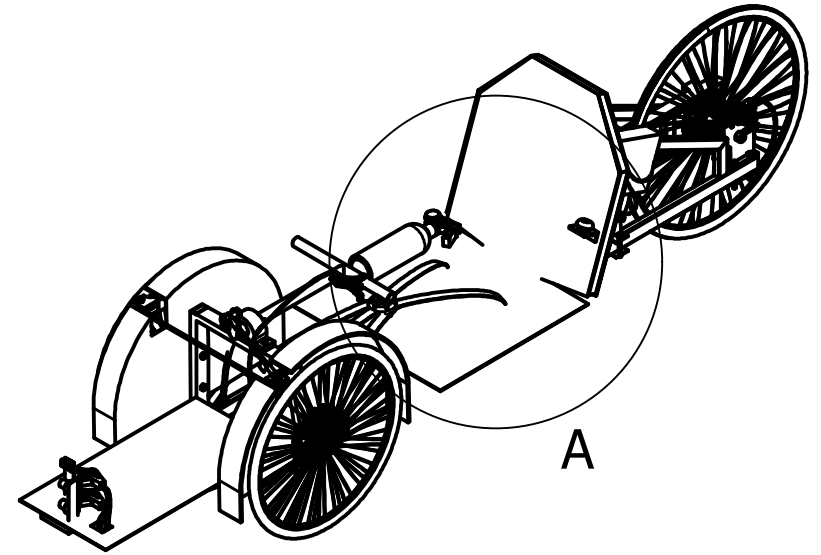
A (1 : 7)



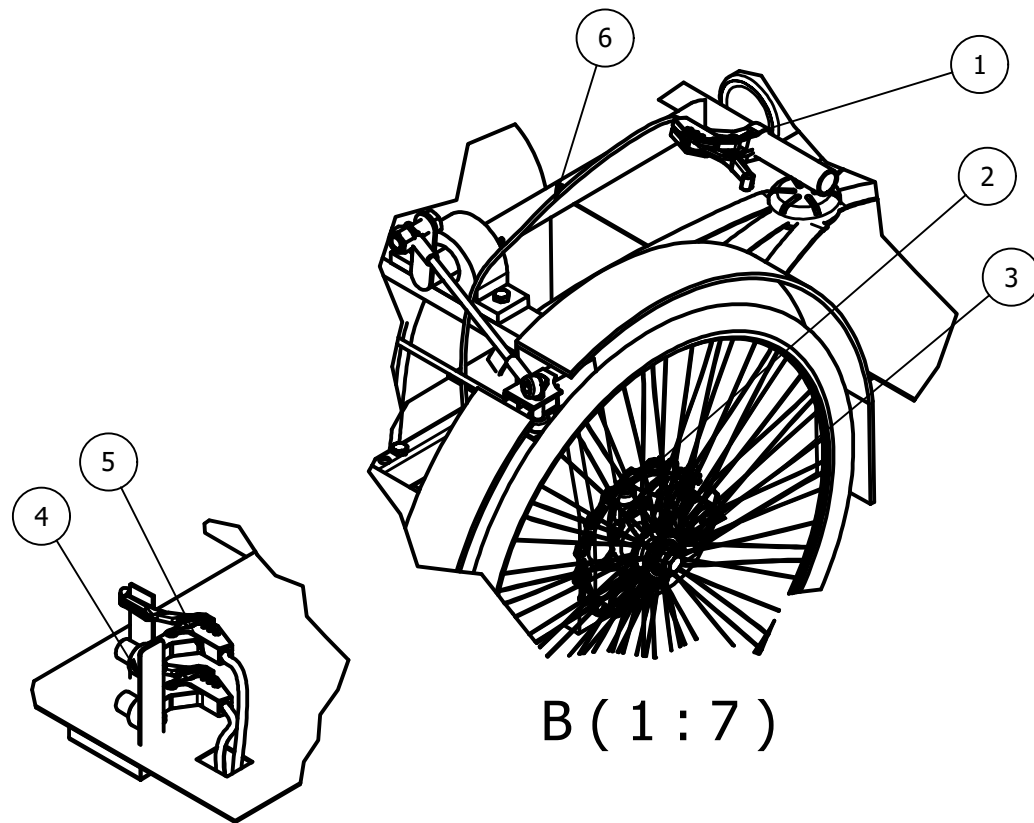
7	1	MCB			
6	1	Watt Meter			
5	1	Fuse			
4	1	Emergency Stop			
3	1	Baterai			Li-Po 48 V, 20 Ah
2	1	Kontroller			1000 W, Max 250 A
1	2	Motor Listrik			BLDC Hub 1000 W
NO	JML	NAMA	BAHAN	Ukuran	KETERANGAN
	Skala : 1 : 7		Digambar : Faiz Evan Saputra		Keterangan :
	Satuan : mm		No. Mhs : 20150130141		
	Tanggal : 03 Januari 2019		Diperiksa : Ir Aris Widyo N, M.T.,Ph.D		
Teknik Mesin UMY			Assembly Kelistrikan		NO : 13 A4



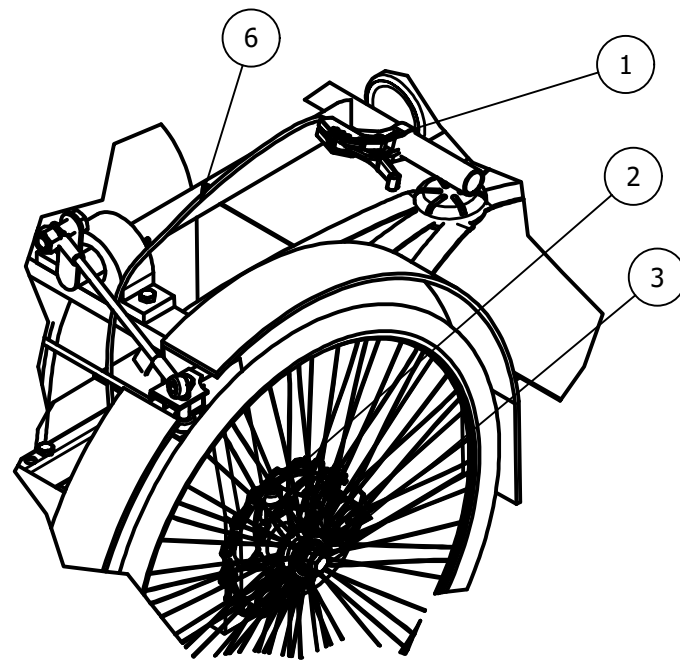
A (1 : 7)



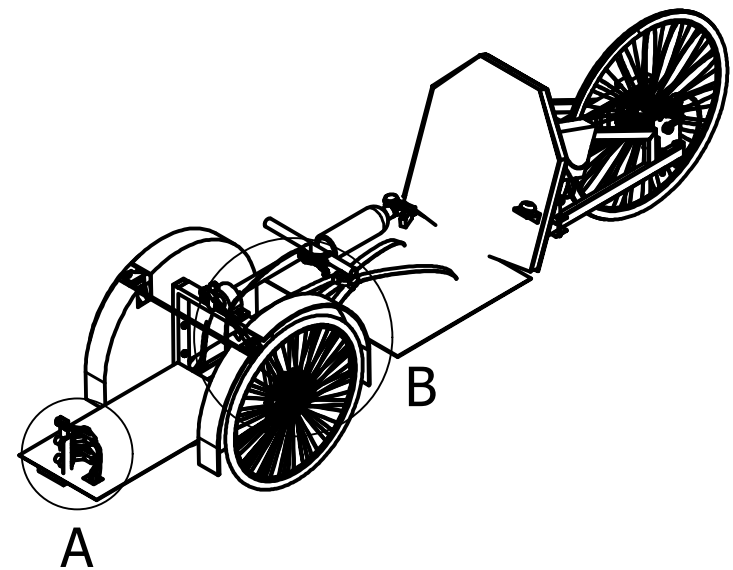
3	2	Emergency Stop	Steel		
2	1	Safety Belt	Steel		5 Point
1	1	APAR			Powder, 1 Kg
NO	JML	NAMA	BAHAN	UKURAN	KETERANGAN
	Skala : 1 : 7		Digambar : Faiz Evan Saputra		Keterangan :
	Satuan : mm		No. Mhs : 20150130141		
	Tanggal : 03 Agustus 2018		Diperiksa : Ir Aris Widyo N, M.T.,Ph.D		
Teknik Mesin UMY			Assembly Safety		NO : 14 A4



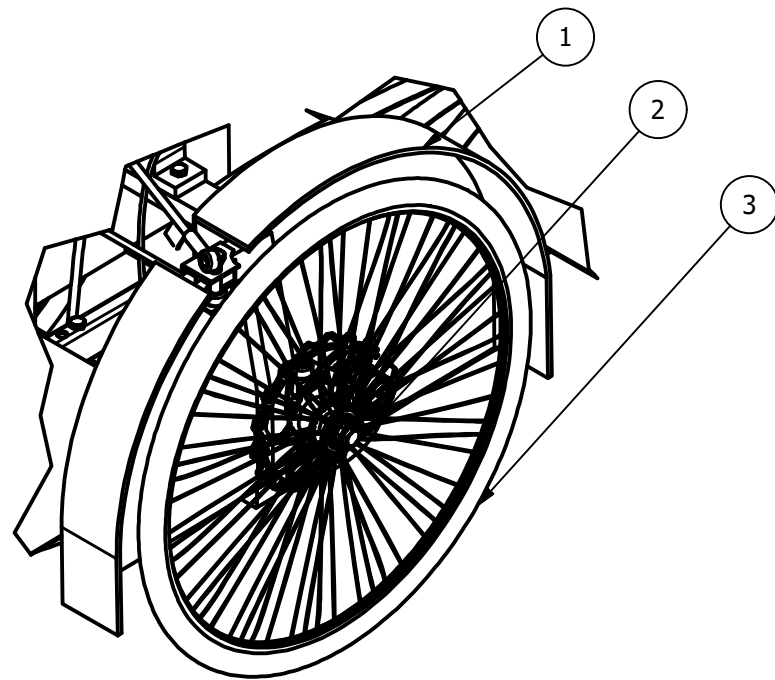
A (1 : 7)



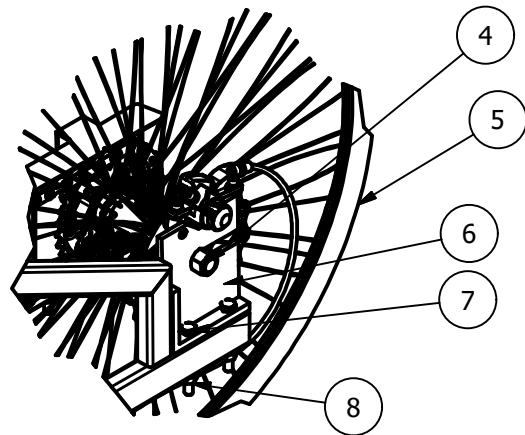
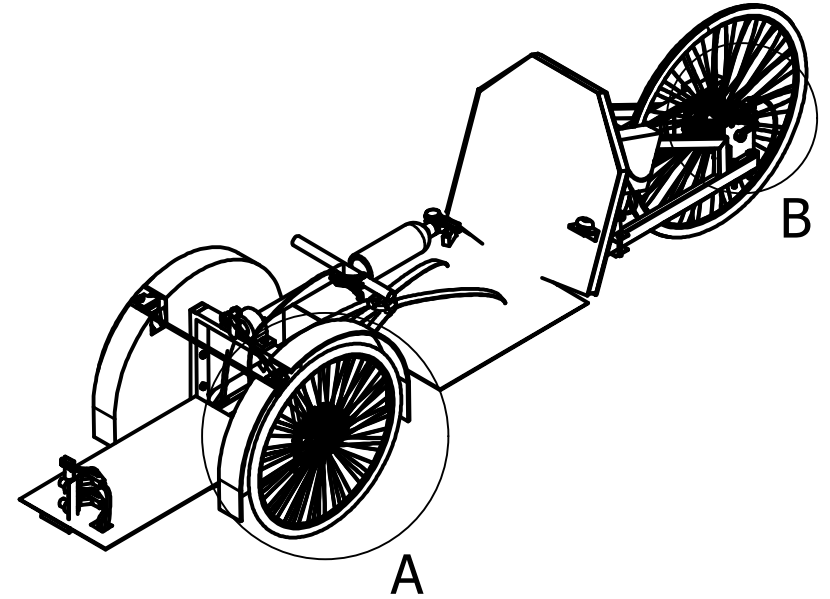
B (1 : 7)



6	3	Selang Rem			Shimano SM-BH59-1250
5	1	Brake Lever Front			Shimano BL-445
4	2	Bracket Brake Lever	Alumunium 6061		
3	3	Caliper			Shimano BR-M446
2	3	Disk Brake			Avid G3CS
1	1	Brake Lever Rear			Shimano BL-445
NO	JML	NAMA	BAHAN	UKURAN	KETERANGAN
	Skala : 1 : 3		Digambar : Faiz Evan Saputra		Keterangan :
	Satuan : mm		No. Mhs : 20150130141		
	Tanggal : 03 Agustus 2018		Diperiksa : Ir Aris Widyo N, M.T.,Ph.D		
Teknik Mesin UMY			Assembly Brake		NO : 15
					A4

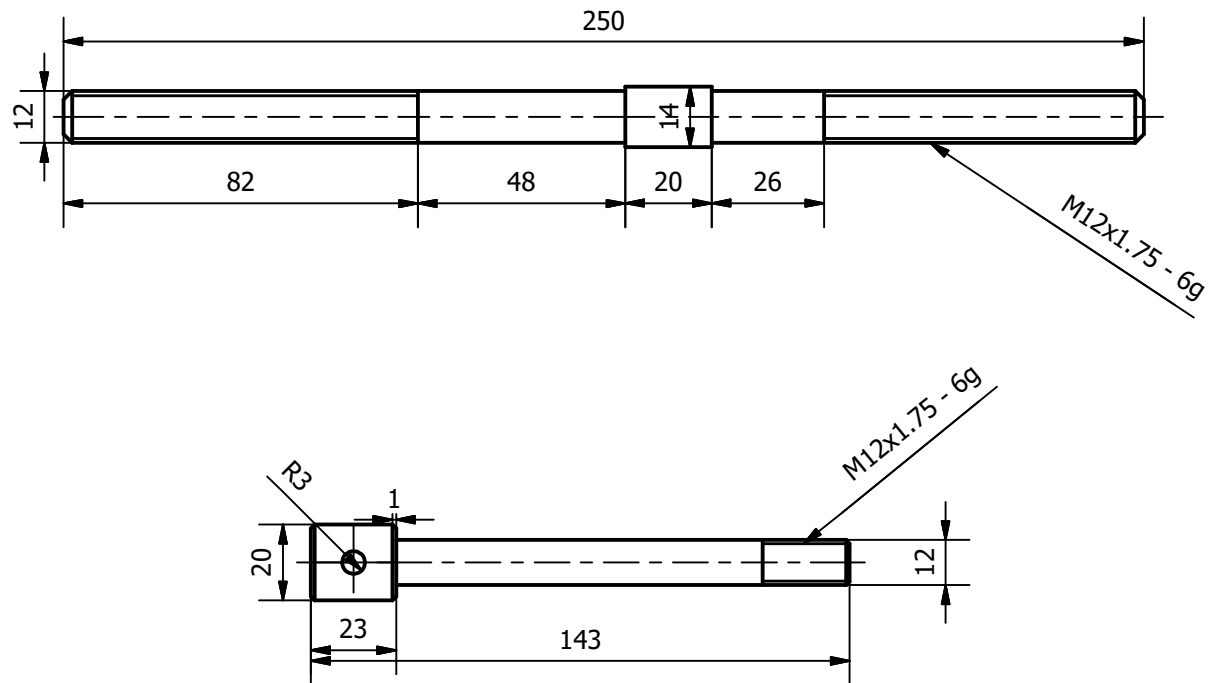



A (1 : 7)

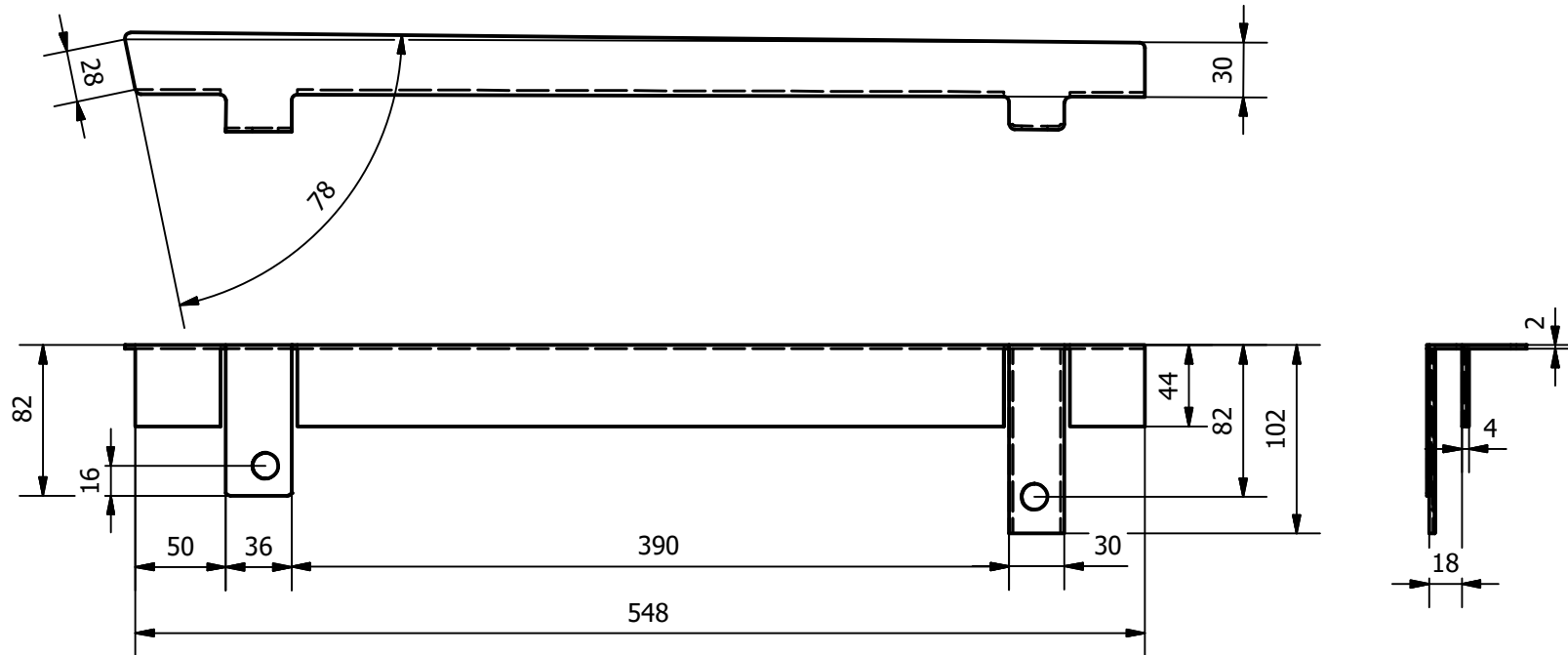


B (1 : 7)

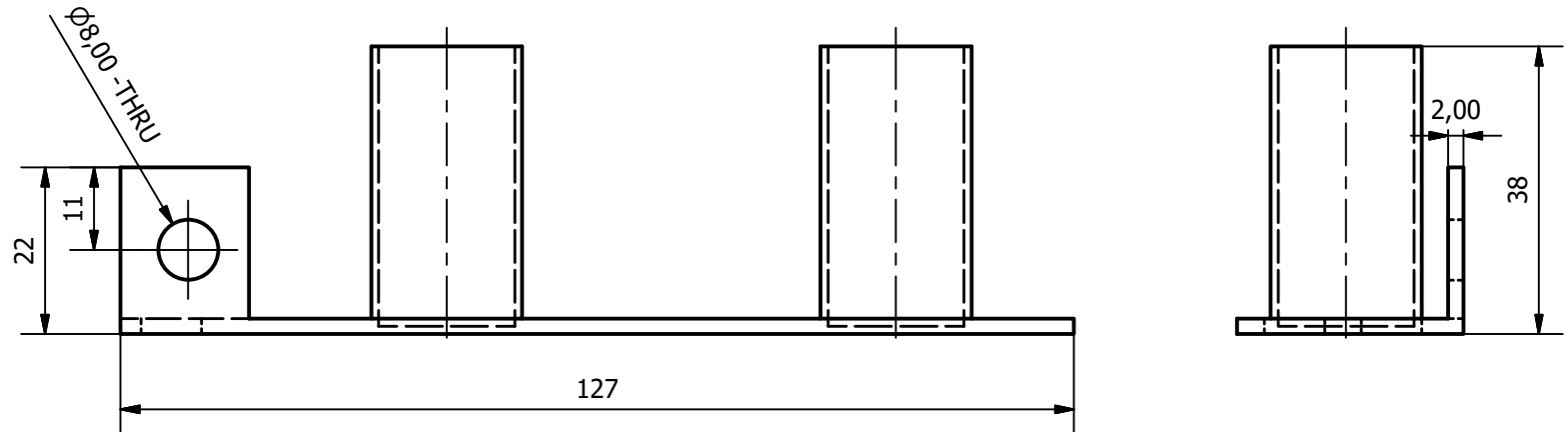
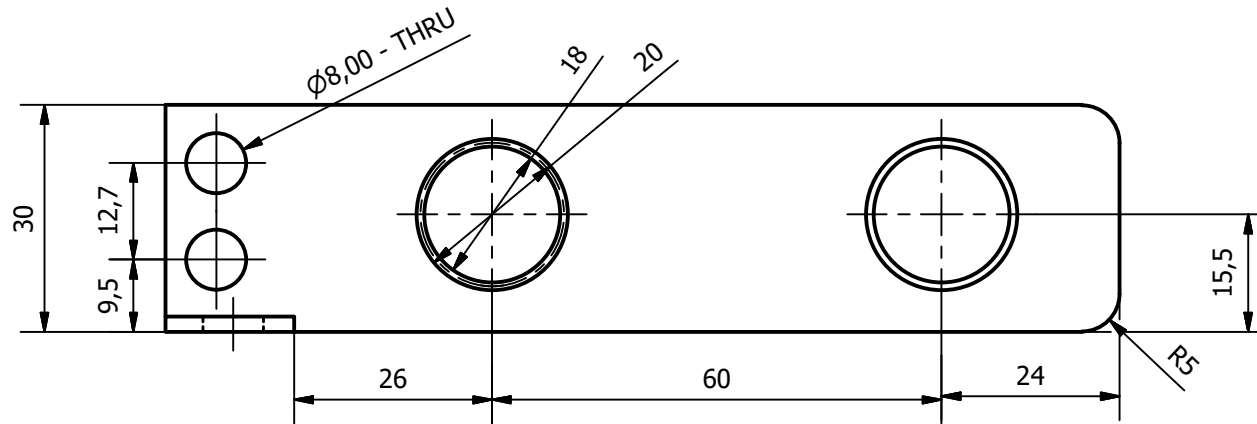
9	2	Wheel Bracket Front	Aluminium 6061		
8	8	Mur Bracket Rear	Steel	M14, M10	
7	8	Baut Bracket Rear	Steel	M10	
6	1	Wheel Bracket Rear	Aluminium 5052		
5	1	Wheel Rear		20 " x 1,25 cm	Schwalbe Kojak
4	1	Axle Wheel Rear	Aluminium		Rounded
3	2	Wheel Front		20 " x 1,25 cm	Schwalbe Kojak
2	2	Axle Wheel Front	Aluminium		Rounded
1	2	Tutup Roda	Polycarbonate		
NO	JML	NAMA	BAHAN	UKURAN	KETERANGAN
	Skala : 1 : 7		Digambar : Faiz Evan Saputra		Keterangan :
	Satuan : mm		No. Mhs : 20150130141		
	Tanggal : 15 Agustus 2018		Diperiksa : Ir Aris Widyo N, M.T.,Ph.D		
Teknik Mesin UMY			Assembly Roda		NO : 16 A4



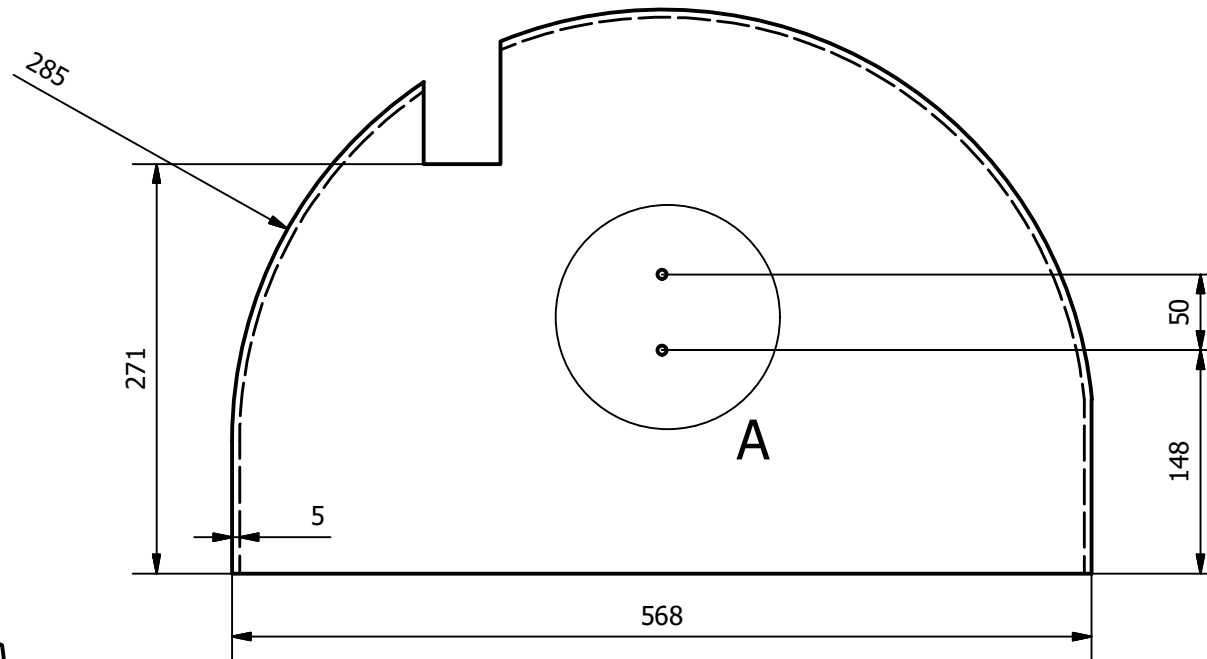
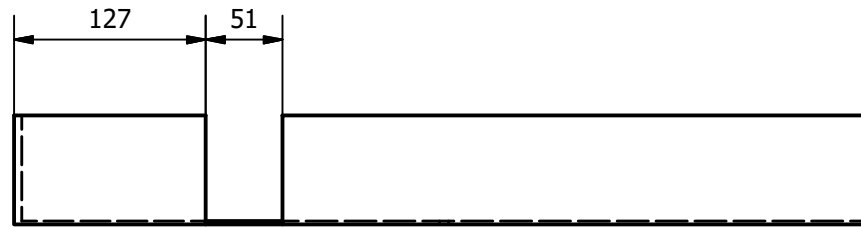
2	1	Front Wheel Shaft	Aluminium 6061		
1	2	Rear Wheel Shaft	Aluminium 6061		
NO	JML	NAMA	BAHAN	Ukuran	KETERANGAN
	Skala : 1 : 2		Digambar : Faiz Evan Saputra		Keterangan :
	Satuan : mm		No. Mhs : 20150130141		
	Tanggal : 03 Agustus 2018		Diperiksa : Ir Aris Widyo N, M.T.,Ph.D		
Teknik Mesin UMY			Wheel Shaft		NO : 17 A4



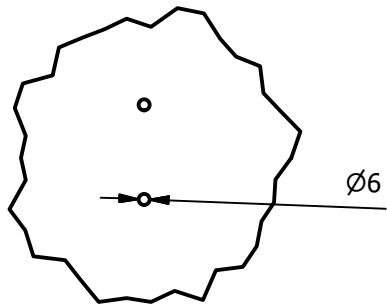
1	1	Cover Transmission	Acrylic		
NO	JML	NAMA	BAHAN	UKURAN	KETERANGAN
	Skala : 1 : 3		Digambar : Faiz Evan Saputra		Keterangan :
	Satuan : mm		No. Mhs : 20150130141		
	Tanggal : 03 Agustus 2018		Diperiksa : Ir Aris Widyo N, M.T.,Ph.D		
Teknik Mesin UMY			Cover Transmission		NO : 18 A4



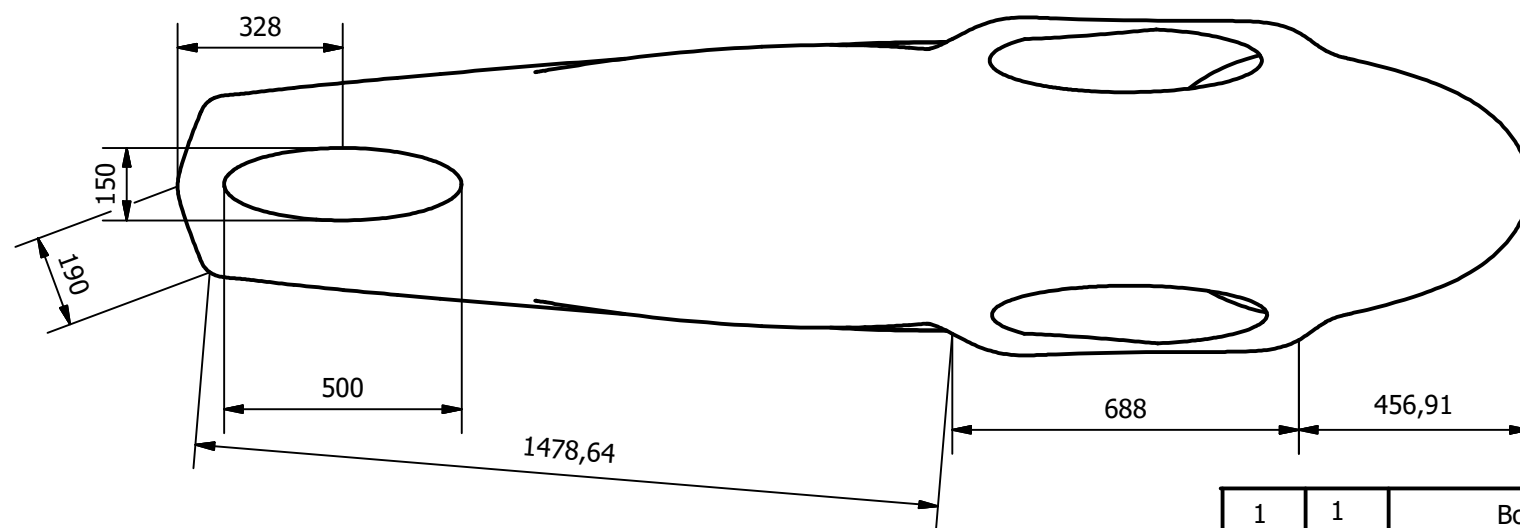
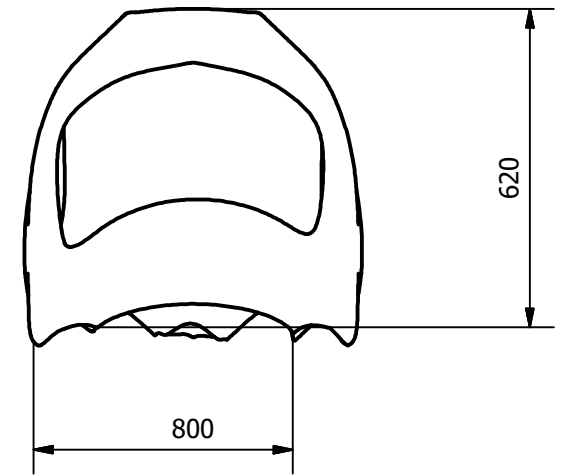
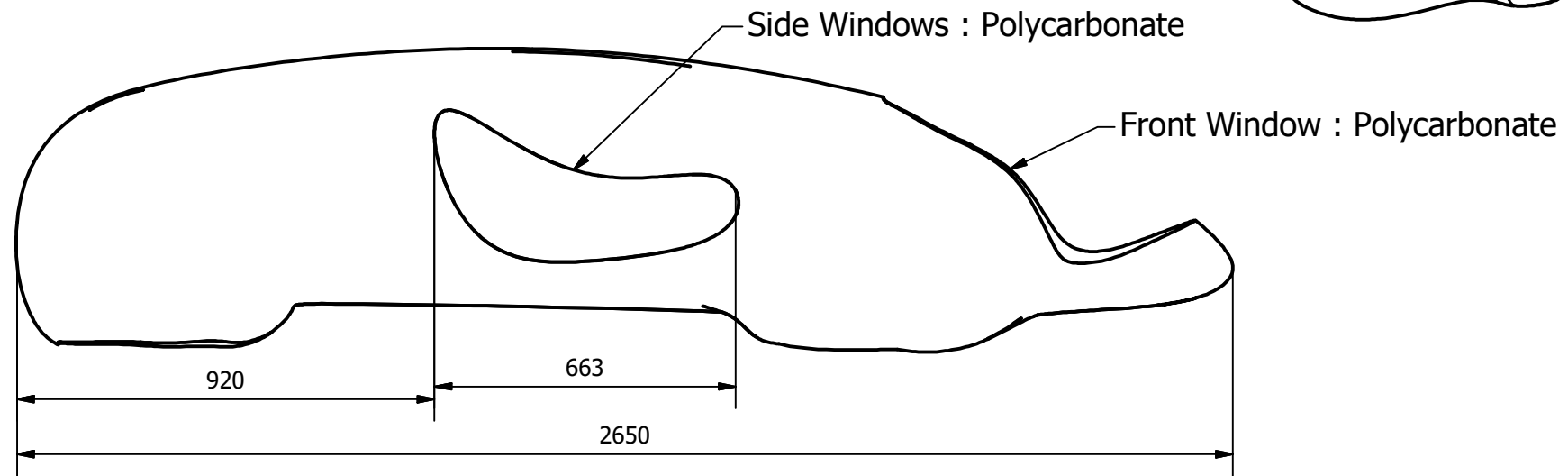
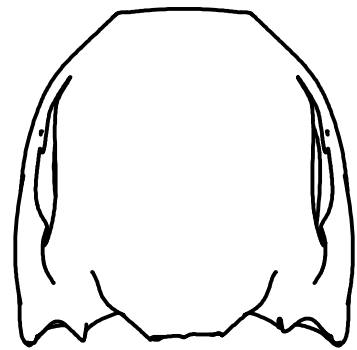
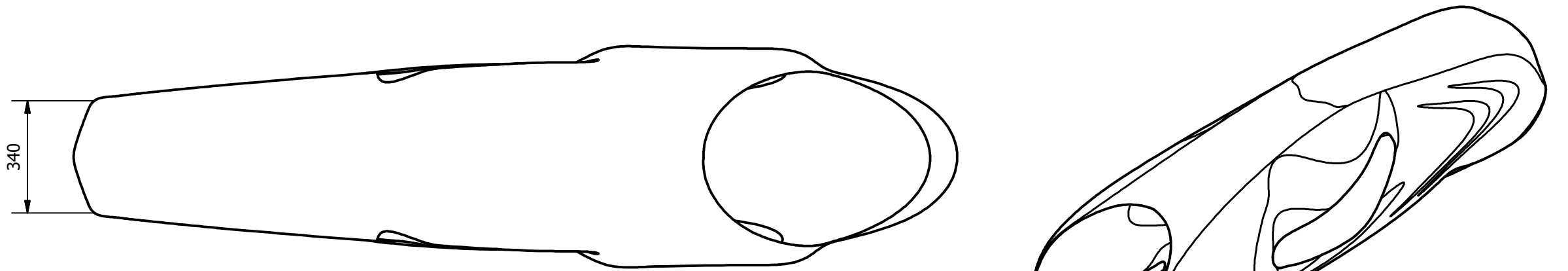
1	1	Bracket Brake Lever	Aluminium 6061		
NO	JML	NAMA	BAHAN	UKURAN	KETERANGAN
	Skala : 1 : 3		Digambar : Faiz Evan Saputra		Keterangan :
	Satuan : mm		No. Mhs : 20150130141		
	Tanggal : 03 Agustus 2018		Diperiksa : Ir Aris Widyo N, M.T.,Ph.D		
Teknik Mesin UMY			Bracket Brake Lever		NO : 19 A4



A (1:4)



1	1	Cover Wheel	Acrilic		
NO	JML	NAMA	BAHAN	UKURAN	KETERANGAN
	Skala : 1 : 3		Digambar : Faiz Evan Saputra		Keterangan :
	Satuan : mm		No. Mhs : 20150130141		
	Tanggal : 03 Agustus 2018		Diperiksa : Ir Aris Widyo N, M.T.,Ph.D		
Teknik Mesin UMY			Cover Wheel		NO : 20 A4



1	1	Body	FiberGlass		
NO	JML	NAMA	BAHAN	UKURAN	KETERANGAN
	Skala : 1 : 15		Digambar : Faiz Evan Saputra		Keterangan :
	Satuan : mm		No. Mhs : 20150130141		
	Tanggal : 03 Agustus 2018		Diperiksa : Ir Aris Widyo N, M.T.,Ph.D		
Teknik Mesin UMY			Body		NO : 21 A4