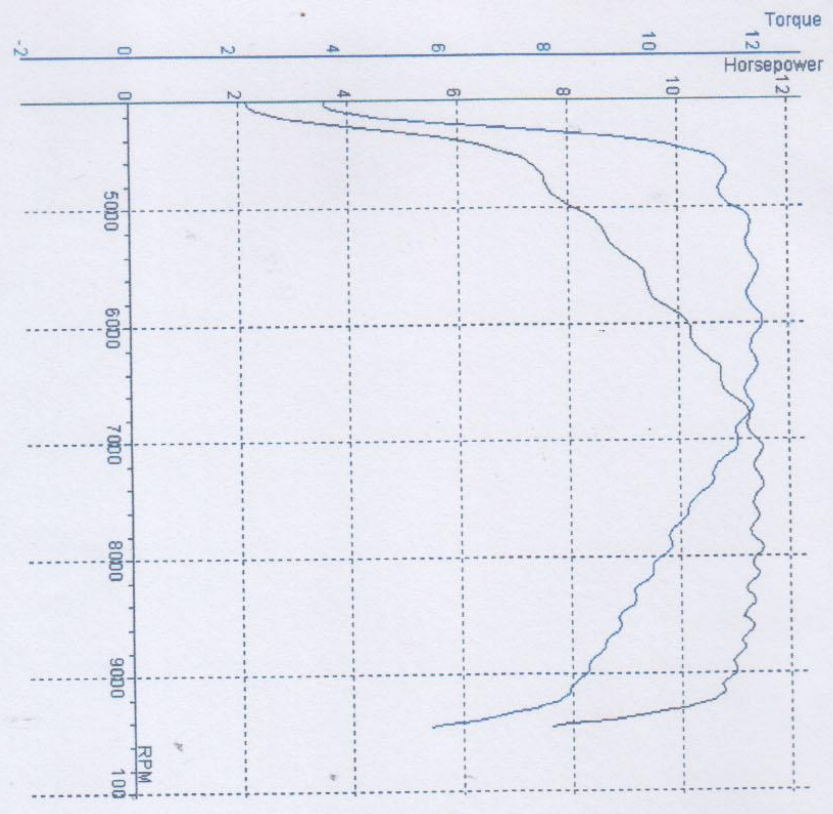




Jl. Mangrove Selatan, Kemaman, Singaperbangsa, Palembang, Siantan, Yogyakarta.
 Telp : +62 274 66 363 03

SPORTDYNO V3.3
 DYNAMOMETER: MOTOTECH RPD
 ROLLER INERTIA: 1.446
 Displacement Correction
 Correction Factor: ISO 1585
 NOTE: Load Cell Included.

TEST NAME: JUPITER MX 4SPEED 135 T007
 MAX POWER: 11.5 (11.5) / 7082
 MAX TORQUE: 12.06 (12.06) / 5972
 Temp. °C: 30.7
 Humidity %: 43
 Pressure: 1000.0 mbar
 KMH: 97.7
 Date/Time: 5/11/2016 9:49:56 AM
 DATA FOR TEST: JUPITER MX 4SPEED 135 T007



Comments
 KOIL STD // BUSI STD // PREMIUM

RPM	HP (HPQ (N*M*M))	T
4000	2.2	3.73
4250	3.3	5.48
4500	6.9	10.84
4750	7.6	11.30
5000	8.2	11.63
5250	8.7	11.76
5500	9.3	11.99
5750	9.5	11.76
5972	10.1	12.06
6000	10.2	12.04
6250	10.4	11.86
6500	10.8	11.73
6750	11.3	11.82
7000	11.4	11.57
7082	11.5	11.54
7250	11.4	11.09
7500	11.3	10.72
7750	11.3	10.29
8000	11.3	10.03
8250	11.2	9.62
8500	11.1	9.26
8750	11.1	8.99
9000	11.0	8.61
9250	10.2	7.81

LOSSES: 0.0 HP
 TOTAL ENGINE: 11.5HP
 0.0N*M*M
 12.06N*M*M

TEST NAME: JUPITER MAX 135 4SPEED T096

MAX POWER: 11.8 (11.8) / 7291

MAX TORQUE: 12.20 (12.20) / 5828

Temp. °C: 33.9

Humidity %: 53

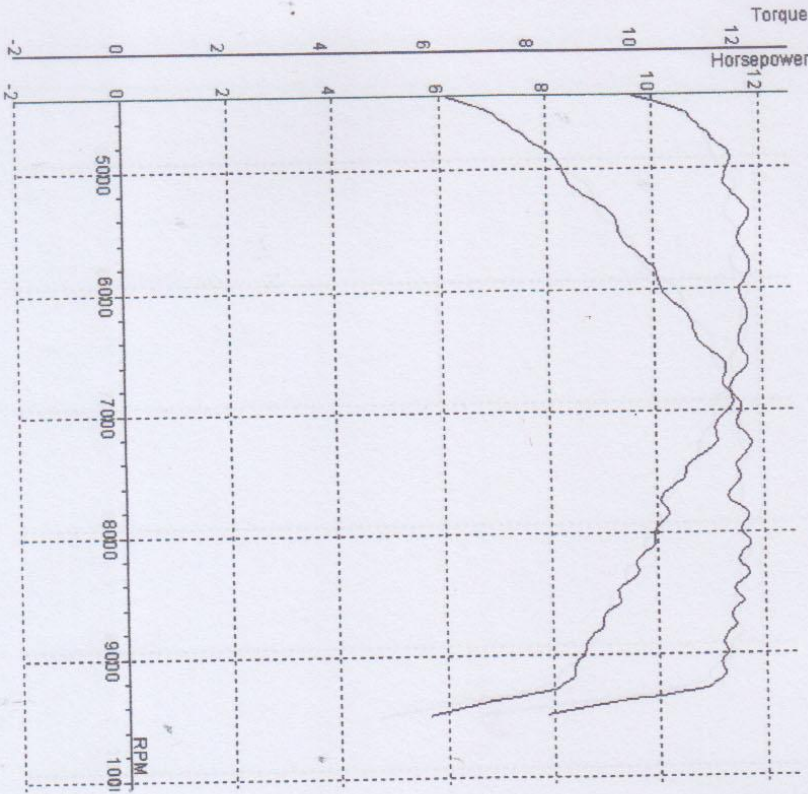
Pressure: 1000.0 mbar

KMH: 97.5

Date/Time: 5/12/2016 10:46:57 AM

DATA FOR TEST: JUPITER MAX 135 4SPEED T096

Comments: KOIL KTC // BUSI TDR BALLISTIC // PREMIUM



RPM	HP (HP)	(N*m/M)	T
4250	6.3	10.20	0.52
4500	6.8	10.76	0.58
4750	7.7	11.49	0.76
5000	8.3	11.77	0.96
5250	8.9	12.01	1.14
5500	9.3	12.03	1.32
5750	9.9	12.18	1.50
5828	10.0	12.20	1.54
6000	10.2	11.98	1.68
6250	10.7	12.10	1.86
6500	11.1	12.06	2.04
6750	11.3	11.81	2.22
7000	11.6	11.73	2.40
7250	11.8	11.51	2.60
7291	11.8	11.47	2.62
7500	11.5	10.88	2.80
7750	11.4	10.41	3.00
8000	11.6	10.26	3.22
8250	11.6	9.91	3.44
8500	11.5	9.55	3.66
8750	11.4	9.25	3.90
9000	11.3	8.84	4.16
9250	11.0	8.37	4.42
9500	7.6	5.63	4.84

LOSSES: 0.0 HP
 TOTAL ENGINE: 11.8 HP

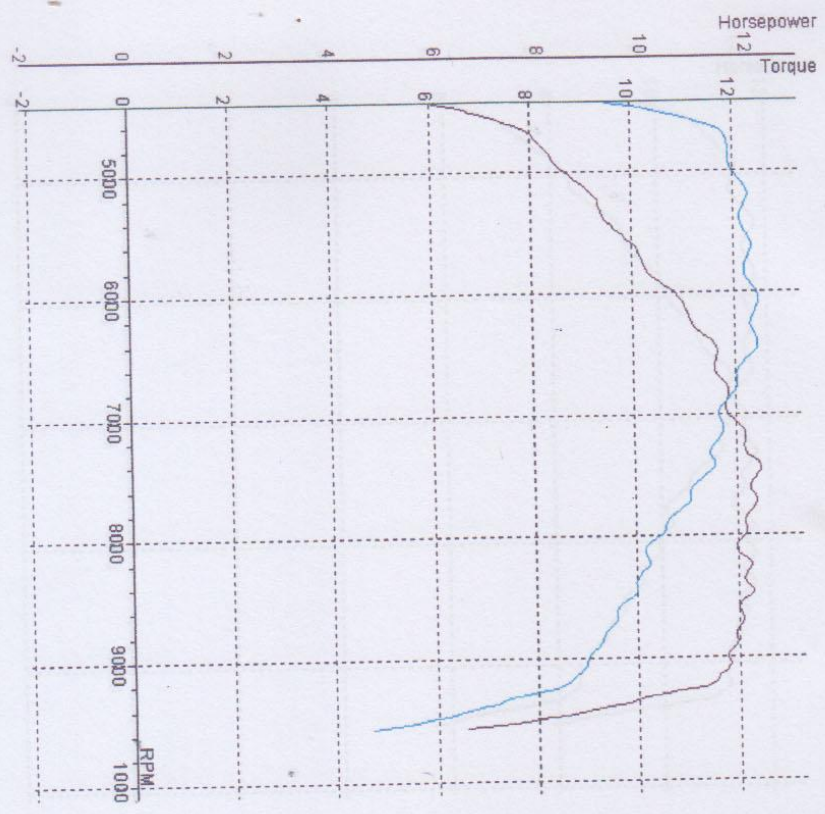


Jl. Hutanpand Reduan, Karangas, Singaperbangsa,
 Mangrovekampung, Jember, Yogyakarta.
 Telp 1 +62 274 66 363 03

TEST NAME: JUPITER MX 135 4SPEED T057 | MAX POWER: 12.49 (12.11) / 7449 | MAX TORQUE: 12.49 (12.49) / 6055 | Temp. °C: 32.4 °C | Humidity %: 59 % | Pressure: 1000.0 mbar | KMH: 98.8 | Date/Time: 5/12/2016 10:15:32 AM

DYNAMOMETER: MOTOTECH RPD
 ROLLER INERTIA: 1.446
 Displacement Correction
 Correction Factor: ISO 1585
 NOTE: Load Cell Included.

DATA FOR TEST: JUPITER MX 135 4SPEED T057



Comments
 KOIL KTC // BUSI G-POWER PLATINUM // PREMIUM

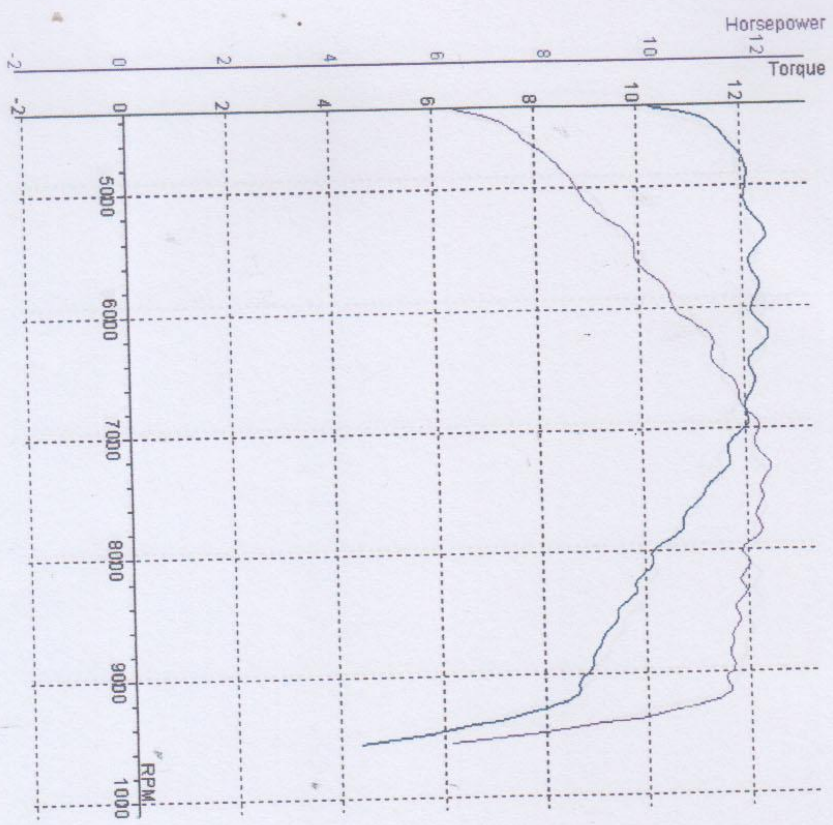
RPM	HP (HP) Q (N*M*MM)	T
4250	6.2	9.86
4500	6.6	10.52
4750	7.9	11.89
5000	8.5	12.04
5250	9.1	12.23
5500	9.5	12.26
5750	9.9	12.22
6000	10.5	12.46
6055	10.6	12.49
6250	10.8	12.32
6500	11.3	12.36
6750	11.3	12.05
7000	11.5	11.67
7250	11.8	11.52
7449	12.1	11.54
7500	12.0	11.32
7750	12.0	10.94
8000	11.7	10.38
8250	11.9	10.23
8500	11.8	9.84
8750	11.6	9.38
9000	11.4	8.99
9250	10.8	8.21
9500	7.8	5.80

LOSSES: 0.0 HP
 TOTAL ENGINE: 12.1HP
 0.0N*M*MM
 12.49N*M*MM

TEST NAME: JUPITER MX 135 4SPEED T018 | MAX POWER: 12.0 (12.0) 7513 | MAX TORQUE: 12.49 (12.49) 6231 | Temp. °C: 30.6 °C | Humidity %: 69 % | Pressure: 1000.0 mbar | KMH: 98.2 | Date/Time: 5/12/2016 9:53:50 AM

DATA FOR TEST: JUPITER MX 135 4SPEED T018

Comments
 KOIL KTC // BUSI STD // PREMIUM



RPM	HP (HP)	HP (N*M*M)	T
4000	6.5	10.64	0.52
4250	6.7	10.93	0.54
4500	7.3	11.57	0.64
4750	8.0	12.02	0.82
5000	8.5	12.07	1.00
5250	9.0	12.23	1.16
5500	9.5	12.27	1.32
5750	9.9	12.27	1.52
6000	10.3	12.16	1.70
6231	10.9	12.49	1.86
6250	11.0	12.47	1.88
6500	11.1	12.12	2.06
6750	11.5	12.04	2.24
7000	11.8	11.93	2.44
7250	12.0	11.69	2.62
7313	12.0	11.67	2.66
7500	11.9	11.18	2.82
7750	11.8	10.74	3.02
8000	11.4	10.12	3.24
8250	11.4	9.79	3.46
8500	11.3	9.43	3.70
8750	11.3	9.11	3.94
9000	11.2	8.77	4.20
9250	10.7	8.19	4.46
9500	6.8	5.05	4.96

LOSSES: 0.0 HP | 0.0 N*M*M
 TOTAL ENGINE: 12.0 HP | 12.49 N*M*M

DYNAMOMETER: MOTOTECH RPD
 ROLLER INERTIA: 1.446
 Displacement Correction
 Correction Factor: ISO 1585
 NOTE: Load Cell Included.

TEST NAME
 JUPITER MX 4SPEED 135 T108

MAX POWER

MAX TORQUE
 12.36 (12.36) / 6095

Temp. °C
 34.7 °C

Humidity %
 48 %

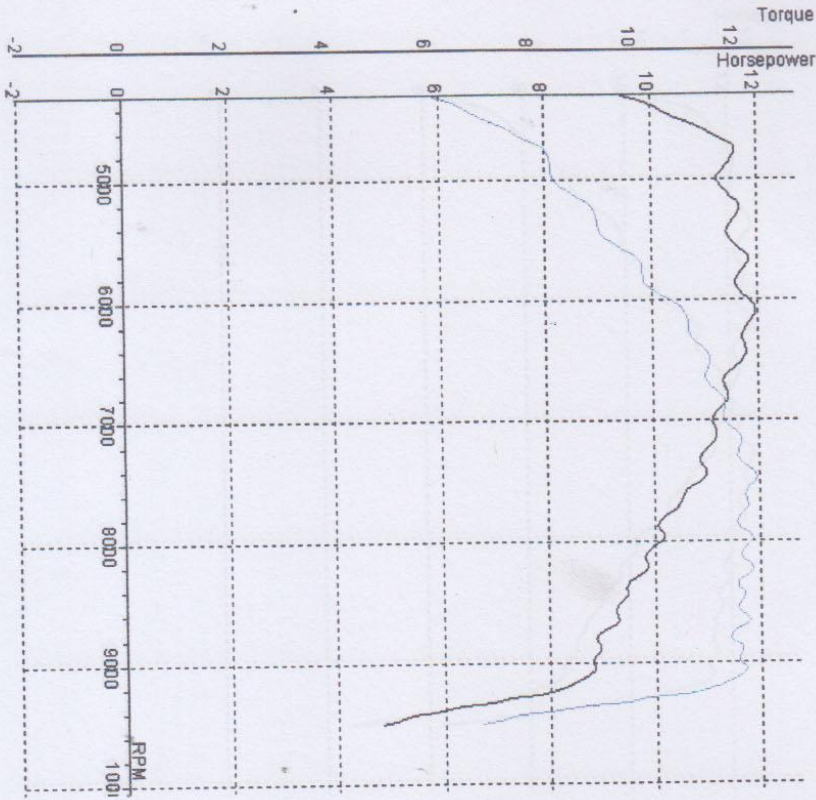
Pressure
 1000.0 mbar

KMH
 98.1

Date/Time
 5/11/2016 11:15:33 AM

DATA FOR TEST: JUPITER MX 4SPEED 135 T108

Comments
 KOIL STD // BUSI DENSO IRIIDIUM // PREMIUM



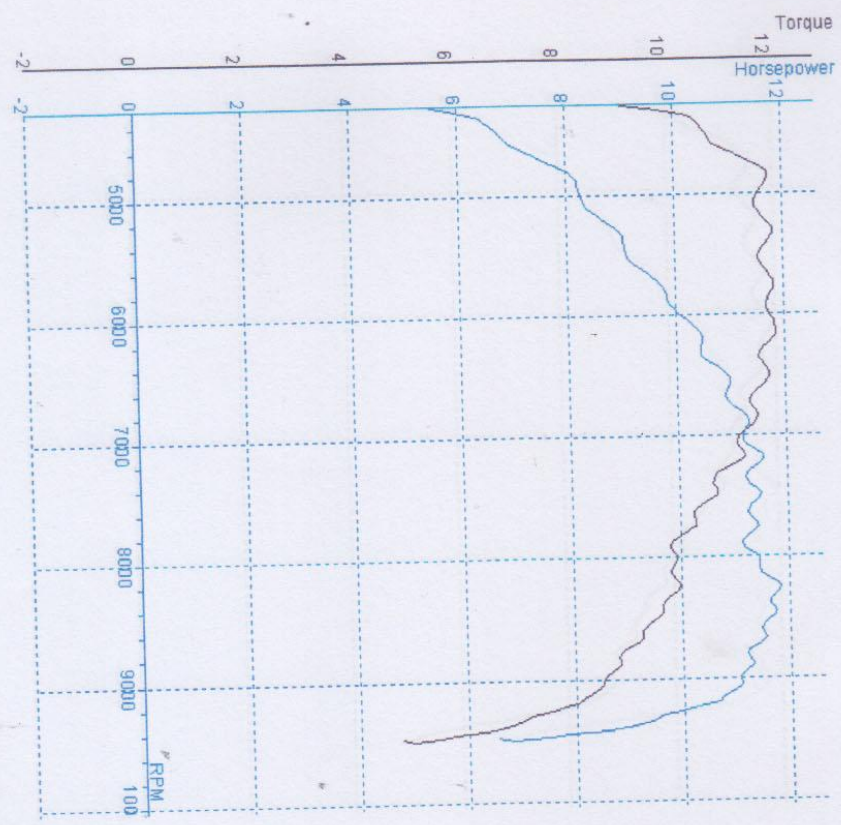
RPM	HP (GEMO) (N·M·M)	T
4000	6.1	10.03
4250	6.2	10.22
4500	7.0	11.02
4750	8.0	11.98
5000	8.2	11.64
5250	8.9	12.04
5500	9.2	11.91
5750	9.8	12.10
6000	10.4	12.27
6095	10.6	12.36
6250	10.7	12.12
6500	11.1	12.08
6750	11.2	11.79
7000	11.3	11.50
7250	11.6	11.32
7457	11.9	11.35
7500	11.9	11.23
7750	11.7	10.64
8000	11.8	10.39
8250	11.8	10.08
8500	11.6	9.65
8750	11.4	9.23
9000	11.6	9.11
9250	10.5	8.05
9500	6.7	4.96

LOSSES: 0.0 HP
 TOTAL ENGINE: 11.9HP

0.0N·M·M
 12.36N·M·M

TEST NAME: JUPITER MX ASPEED 135 T070 | MAX POWER: 11.9 (11.9) / 8255 | MAX TORQUE: 12.09 (12.09) / 6137 | Temp. °C: 34.4 °C | Humidity %: 49 % | Pressure: 1000.0 mbar | KMH: 97.9 | Date/Time: 5/11/2016 10:40:21 AM

DATA FOR TEST: JUPITER MX ASPEED 135 T070



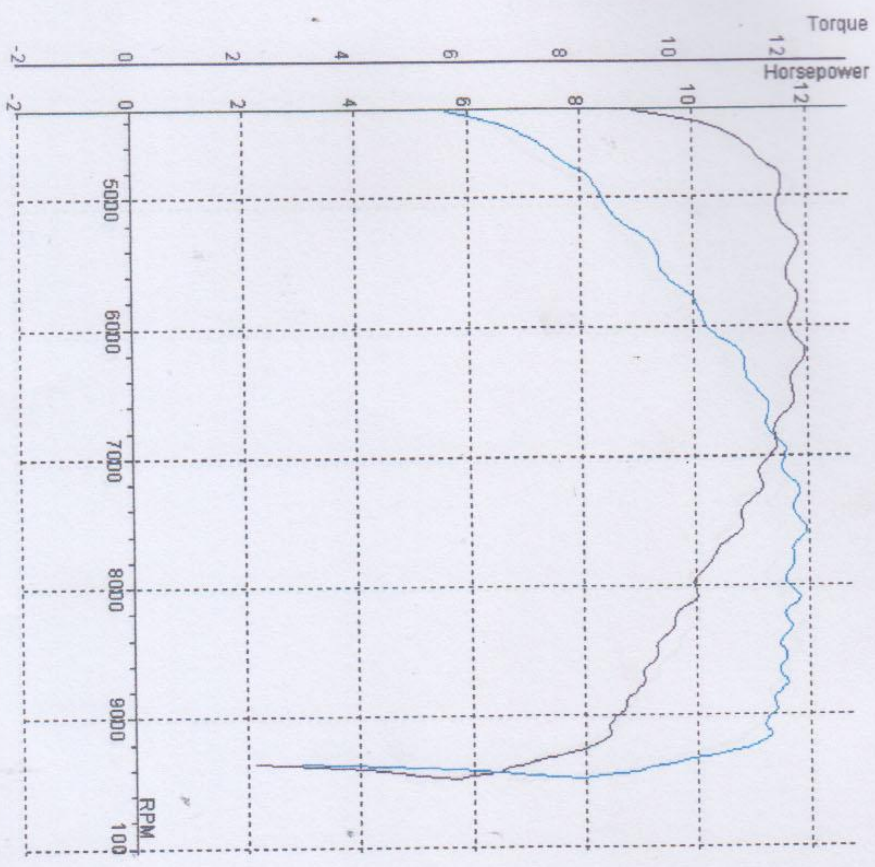
Comments
KOH. STD // BUSI TDR BALLISTIC // PREMIUM

RPM	HP (HP@Q (N*M*M))	T
4000	5.8	9.70
4250	6.1	10.07
4500	6.8	10.82
4750	7.8	11.75
5000	8.3	11.74
5250	8.9	12.02
5500	9.1	11.77
5750	9.8	12.06
6000	10.1	11.97
6137	10.4	12.09
6250	10.5	11.83
6500	11.0	11.95
6750	11.0	11.61
7000	11.2	11.33
7250	11.4	11.15
7500	11.5	10.80
7750	11.4	10.45
8000	11.5	10.13
8250	11.9	10.17
8255	11.9	10.17
8500	11.6	9.67
8750	11.2	9.08
9000	11.1	8.70
9250	10.0	7.60

LOSSES: 0.0 HP 0.0N*M*M
TOTAL ENGINE: 11.9HP 12.09N*M*M

TEST NAME: JUPITER MAX 4SPEED 135 T038 | MAX POWER: 12.0(12.8)/7564 | MAX TORQUE: 12.40(13.04)/6195 | Temp. °C: 33.2 °C | Humidity %: 58 % | Pressure: 1000.0 mbar | KMH: 97.6 | Date/Time: 5/11/2016 10:17:20 AM

DATA FOR TEST: JUPITER MAX 4SPEED 135 T038



Comment: KOIL STD // BUSI G-POWER PLATINUM // PREMIUM

RPM	HP (HP)	HP (N·M·M)	T
4250	5.9	9.67	0.52
4500	7.0	11.02	0.64
4750	7.8	11.75	0.82
5000	8.4	11.91	1.02
5250	8.9	12.11	1.18
5500	9.4	12.14	1.36
5750	10.0	12.28	1.56
6000	10.2	12.11	1.72
6195	10.8	12.40	1.86
6250	10.9	12.37	1.90
6500	11.1	12.17	2.08
6750	11.3	11.85	2.26
7000	11.6	11.75	2.46
7250	11.8	11.57	2.66
7500	11.9	11.23	2.84
7564	12.0	11.21	2.90
7750	11.7	10.70	3.06
8000	11.7	10.34	3.28
8250	11.6	9.95	3.50
8500	11.6	9.63	3.74
8750	11.6	9.38	3.96
9000	11.3	8.86	4.22
9250	10.7	8.18	4.50

LOSSES: -0.8 HP
 TOTAL ENGINE: 12.8HP
 -0.6N·M·M
 13.04N·M·M