

LAMPIRAN 1 HASIL UJI MOTOR STANDAR 105 CC

A. Hasil pengujian 1 motor standar 105 cc

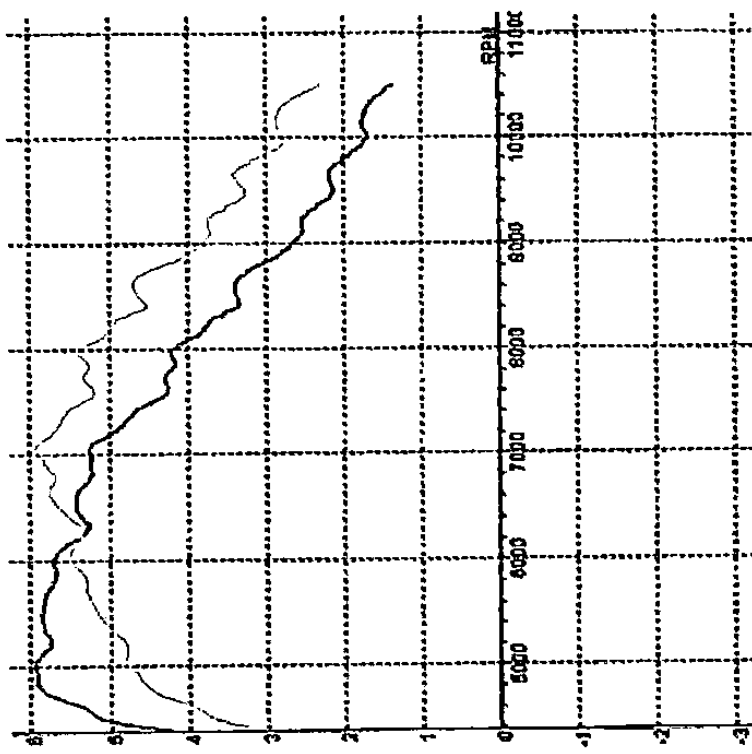
DTOTECH
Motocourse Technology

Jl. Ringroad Belian, Kemaman, Singaperbangsa-Kuala Lumpur 1/446
 Banguntapan, Bantul, Yogyakarta
 Telp 1 429 274 64 285 03

SPORTYNO V2.3
 DYNACOMETER Model RPD
 (Replacement CompuLab
 Correction Factor: ISO 1583)

MAX POWER: 6.78 (6.78) / 3021 | Temp. °C: 30.8 °C | Humidity %: 80% | Pressure: KAHU | Date/Time: 13/11/2013 10:56:17
 RPM: 5000 | Torque: 10000 | RPM: 770

DATA FOR TEST: VEGA 105CC T010



Comments: STANDAR/PERTAMAX

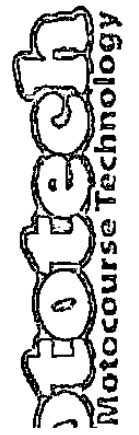
RPM	HP (UPO/CM/HP)	T
4250	3.2	0.31
4500	3.7	0.40
4750	4.4	0.51
5000	4.8	0.78
5250	4.8	0.92
5500	4.8	1.08
5750	5.1	1.24
6000	5.3	1.42
6250	5.5	1.60
6500	5.7	1.78
6750	5.9	1.96
7000	6.1	2.14
7250	6.3	2.32
7500	6.5	2.50
7750	6.7	2.68
8000	6.9	2.86
8250	7.1	3.04
8500	7.3	3.22
8750	7.5	3.40
9000	7.7	3.58
9250	7.9	3.76
9500	8.1	3.94
9750	8.3	4.12
10000	8.5	4.30
10250	8.7	4.48
10500	8.9	4.66
10750	9.1	4.84
11000	9.3	5.02

LOSSKI: 0.0 HP | QUNPAM: 6.78 HP
 TOTAL ENGINE: 6.8 HP

B. Hasil pengujian 2 motor standar 105 cc

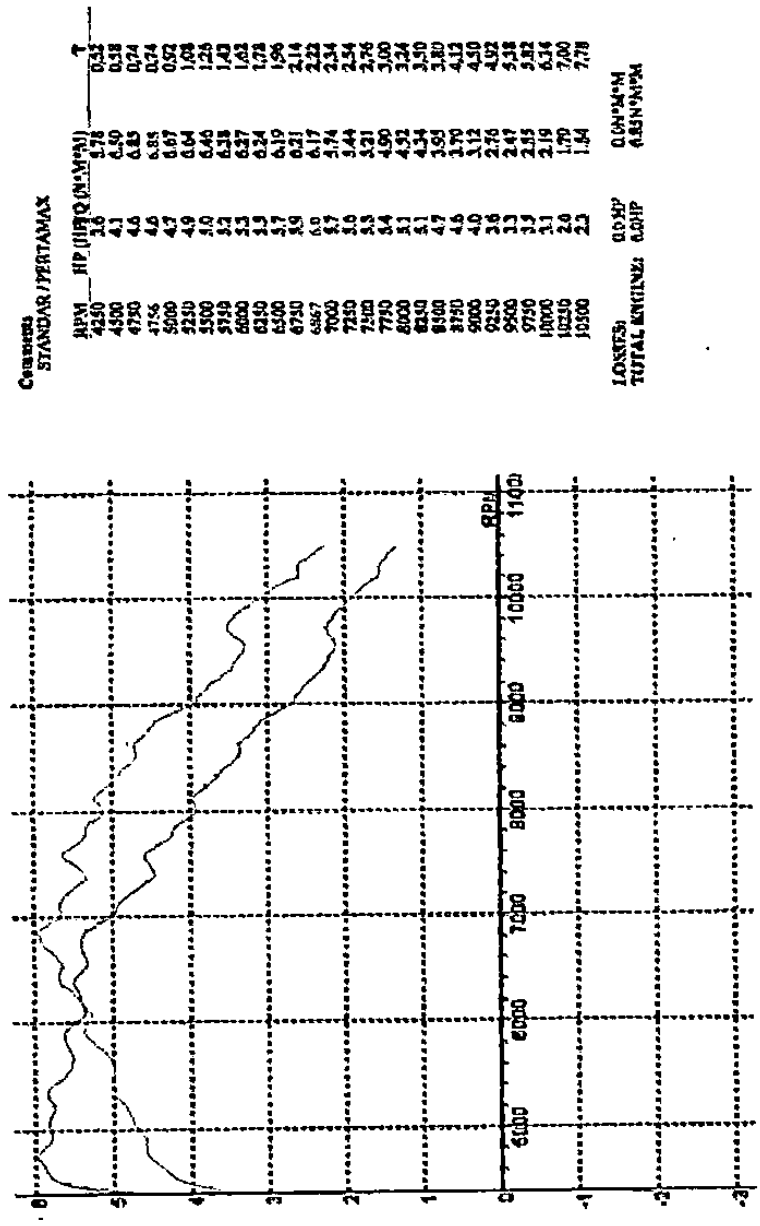
SPORTVAD VLS
DYNAMOMETER Monosh RPD
 ROLLER INERTIA 1,46
 Dyblonem Correction
 Correction Factor: ISO 1545

PT. RINGROAD SOLARIS, KARAWAN, SUKSESARAN, BOGOR
 RONGGATPURI, BASTALI, TEGAYUBERIL
 Telp: +62 274 65 593 03



MAX TORQUE: 10.00 Nm | Temp: 30.0°C | Humidity: 76.0% | Pressure: 1000.0 mbar | RPM: 75.0 | Description: 15/11/2013 16:50:50

DATA FOR TEST: VEGA 105CC T021



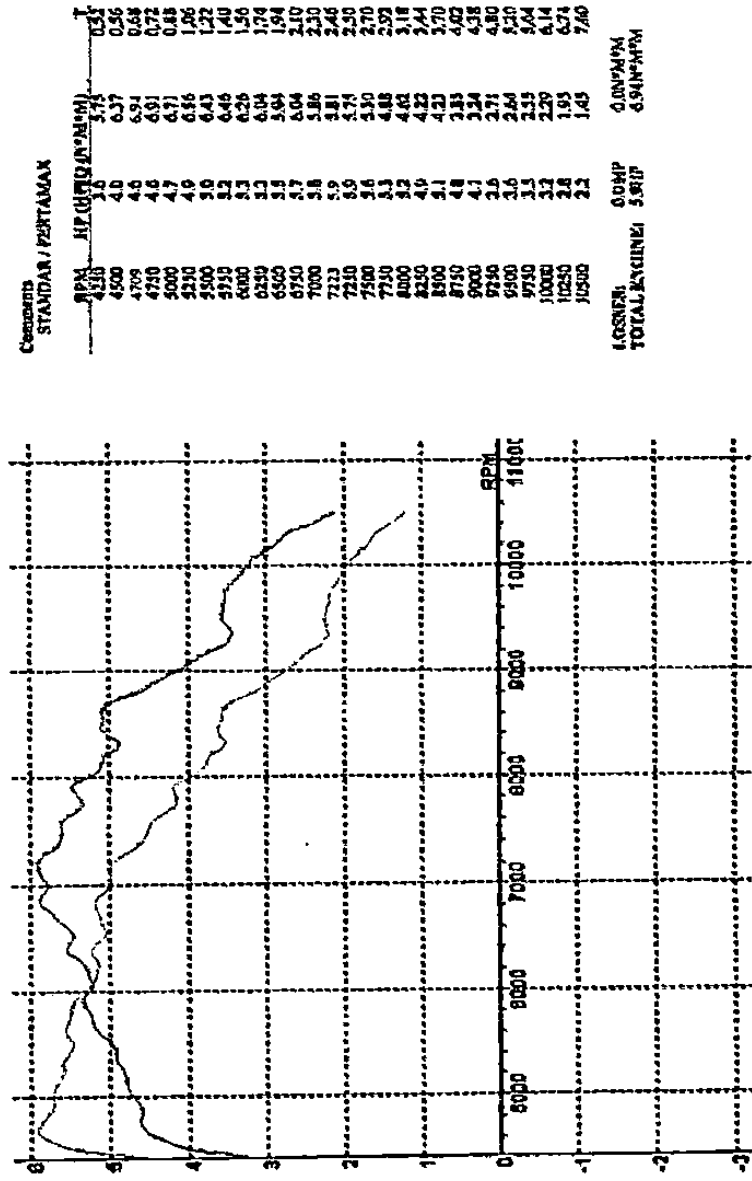
Losses: 0.05 HP
 TOTAL ENGINE: 6.05 HP
 0.05 HP / 0.82 N·M/Min

C. Hasil pengujian 3 motor standar 105 cc

Dototech
 Motocourse Technology
 J. Ringroad Batatan, Kemaman, Singapore. Roll Inertial 1448
 Displacement Correction
 Correction Factor: 150.1581

MAX POWER: 5.915 (17.723) | MAX TORQUE: 5.915 (17.723) | Temp. °C: 30.0 °C | Humidity %: 80% | Pressure: 1000.0 mmHg | ASVII: 16.5 | Date/Time: 12/11/2015 16:11:21

DATA FOR TEST: VIDIA 105CC 1022



IGSDN: 0.00%
 TOTAL RYLINE: 5.81P
 0.00%
 6.94%
 0.00%
 6.94%