

DESKRIPSI DATA

No	X	Y	X ²	Y ²	X*Y
1	67	61	4489	3721	4087
2	55	55	3025	3025	3025
3	55	51	3025	2601	2805
4	53	55	2809	3025	2915
5	53	64	2809	4096	3392
6	53	43	2809	1849	2279
7	63	67	3969	4489	4221
8	55	52	3025	2704	2860
9	60	69	3600	4761	4140
10	60	66	3600	4356	3960
11	57	59	3249	3481	3363
12	54	51	2916	2601	2754
13	68	58	4624	3364	3944
14	56	51	3136	2601	2856
15	69	68	4761	4624	4692
16	69	55	4761	3025	3795
17	57	56	3249	3136	3192
18	49	47	2401	2209	2303
19	67	64	4489	4096	4288
20	60	55	3600	3025	3300
21	57	59	3249	3481	3363
22	54	51	2916	2601	2754
23	58	58	3364	3364	3364
24	56	51	3136	2601	2856
25	69	68	4761	4624	4692
26	46	48	2116	2304	2208
27	58	57	3364	3249	3306
28	55	56	3025	3136	3080
29	54	56	2916	3136	3024
30	50	53	2500	2809	2650
31	51	50	2601	2500	2550
32	61	61	3721	3721	3721
33	62	52	3844	2704	3224
34	53	54	2809	2916	2862
35	50	55	2500	3025	2750
Σ	2014	1976	117168	112960	114575

HASIL UJI NORMALITAS

NPar Tests Chi-Square Test Frequencies

X

	Observed N	Expected N	Residual
46,00	1	2,1	-1,1
49,00	1	2,1	-1,1
50,00	2	2,1	-,1
51,00	1	2,1	-1,1
53,00	4	2,1	1,9
54,00	3	2,1	,9
55,00	4	2,1	1,9
56,00	2	2,1	-,1
57,00	3	2,1	,9
58,00	2	2,1	-,1
60,00	3	2,1	,9
61,00	1	2,1	-1,1
62,00	1	2,1	-1,1
63,00	1	2,1	-1,1
67,00	2	2,1	-,1
68,00	1	2,1	-1,1
69,00	3	2,1	,9
Total	35		

Y

	Observed N	Expected N	Residual
43,00	1	1,8	-,8
47,00	1	1,8	-,8
48,00	1	1,8	-,8
50,00	1	1,8	-,8
51,00	5	1,8	3,2
52,00	2	1,8	,2
53,00	1	1,8	-,8
54,00	1	1,8	-,8
55,00	5	1,8	3,2
56,00	3	1,8	1,2
57,00	1	1,8	-,8
58,00	2	1,8	,2
59,00	2	1,8	,2
61,00	2	1,8	,2
64,00	2	1,8	,2
66,00	1	1,8	-,8
67,00	1	1,8	-,8
68,00	2	1,8	,2
69,00	1	1,8	-,8
Total	35		

Test Statistics

	X	Y
Chi-Square	9,200 ^a	15,486 ^b
df	16	18
Asymp. Sig.	,905	,628

a. 17 cells (100,0%) have expected frequencies less than 5. The minimum expected cell frequency is 2,1.

b. 19 cells (100,0%) have expected frequencies less than 5. The minimum expected cell frequency is 1,8.

UJI LINIERITAS

Means

[DataSet0]

Case Processing Summary

	Cases					
	Included		Excluded		Total	
	N	Percent	N	Percent	N	Percent
Y * X	35	100,0%	0	0,0%	35	100,0%

Report

Y			
X	Mean	N	Std. Deviation
46,00	48,0000	1	.
49,00	47,0000	1	.
50,00	54,0000	2	1,41421
51,00	50,0000	1	.
53,00	54,0000	4	8,60233
54,00	52,6667	3	2,88675
55,00	53,5000	4	2,38048
56,00	51,0000	2	,00000
57,00	58,0000	3	1,73205
58,00	57,5000	2	,70711
60,00	63,3333	3	7,37111
61,00	61,0000	1	.
62,00	52,0000	1	.
63,00	67,0000	1	.
67,00	62,5000	2	2,12132
68,00	58,0000	1	.
69,00	63,6667	3	7,50555
Total	56,4571	35	6,41846

ANOVA Table

			Sum of Squares	df	Mean Square	F	Sig.
Y * X	Between Groups	(Combined)	910,686	16	56,918	2,091	,067
		Linearity	593,292	1	593,292	21,794	,000
		Deviation from Linearity	317,394	15	21,160	,777	,686
	Within Groups		490,000	18	27,222		
	Total		1400,686	34			

Measures of Association

	R	R Squared	Eta	Eta Squared
Y * X	,651	,424	,806	,650

HASIL UJI KORELASI *PRODUCT MOMENT*

Correlations

		X	Y
X	Pearson Correlation	1	,651**
	Sig. (2-tailed)		,000
	N	35	35
Y	Pearson Correlation	,651**	1
	Sig. (2-tailed)	,000	
	N	35	35

** . Correlation is significant at the 0.01 level (2-tailed).

HASIL UJI STATISTIK DESKRIPTIF

Frequencies

[DataSet0]

Statistics

		X	Y
N	Valid	35	35
	Missing	0	0
Mean		57,5429	56,4571
Std. Error of Mean		1,03578	1,08492
Median		56,0000	55,0000
Mode		53,00 ^a	51,00 ^a
Std. Deviation		6,12777	6,41846
Variance		37,550	41,197
Range		23,00	26,00
Minimum		46,00	43,00
Maximum		69,00	69,00
Sum		2014,00	1976,00

a. Multiple modes exist. The smallest value is shown

Frequency Table

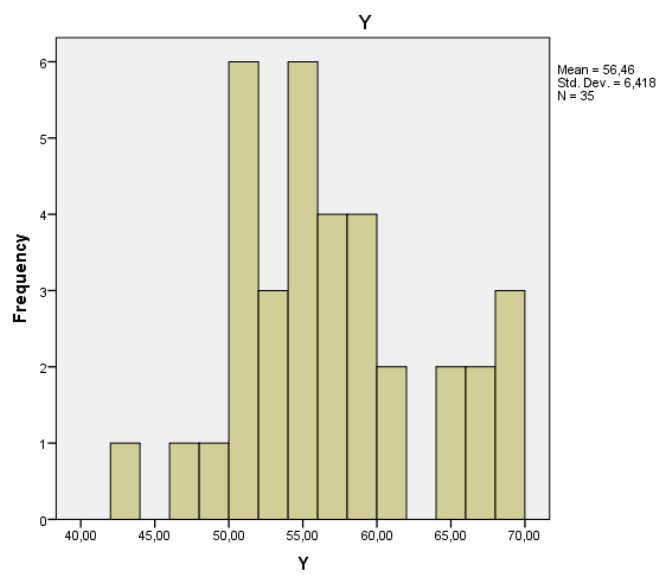
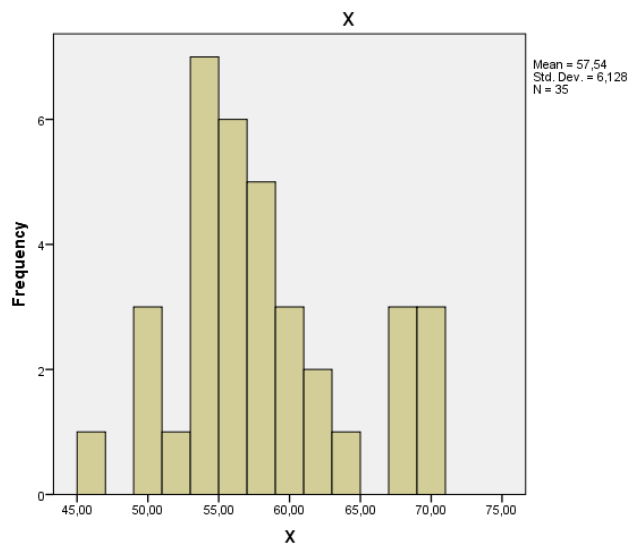
X

	Frequency	Percent	Valid Percent	Cumulative Percent
Valid	46,00	1	2,9	2,9
	49,00	1	2,9	5,7
	50,00	2	5,7	11,4
	51,00	1	2,9	14,3
	53,00	4	11,4	25,7
	54,00	3	8,6	34,3
	55,00	4	11,4	45,7
	56,00	2	5,7	51,4
	57,00	3	8,6	60,0
	58,00	2	5,7	65,7
	60,00	3	8,6	74,3
	61,00	1	2,9	77,1
	62,00	1	2,9	80,0
	63,00	1	2,9	82,9
	67,00	2	5,7	88,6
	68,00	1	2,9	91,4
	69,00	3	8,6	100,0
	Total	35	100,0	100,0

Y

	Frequency	Percent	Valid Percent	Cumulative Percent
43,00	1	2,9	2,9	2,9
47,00	1	2,9	2,9	5,7
48,00	1	2,9	2,9	8,6
50,00	1	2,9	2,9	11,4
51,00	5	14,3	14,3	25,7
52,00	2	5,7	5,7	31,4
53,00	1	2,9	2,9	34,3
54,00	1	2,9	2,9	37,1
55,00	5	14,3	14,3	51,4
56,00	3	8,6	8,6	60,0
Valid 57,00	1	2,9	2,9	62,9
58,00	2	5,7	5,7	68,6
59,00	2	5,7	5,7	74,3
61,00	2	5,7	5,7	80,0
64,00	2	5,7	5,7	85,7
66,00	1	2,9	2,9	88,6
67,00	1	2,9	2,9	91,4
68,00	2	5,7	5,7	97,1
69,00	1	2,9	2,9	100,0
Total	35	100,0	100,0	

Histogram



**HASIL UJI VALIDITAS DAN RELIABILITAS ANGGKET EFEKTIVITAS
PENDEKATAN PEMBELAJARAN PAI**

Correlations

		Total
ITEM01	Pearson Correlation	,489**
	Sig. (2-tailed)	,003
	N	35
ITEM02	Pearson Correlation	,456**
	Sig. (2-tailed)	,006
	N	35
ITEM03	Pearson Correlation	,441**
	Sig. (2-tailed)	,008
	N	35
ITEM04	Pearson Correlation	,747**
	Sig. (2-tailed)	,000
	N	35
ITEM05	Pearson Correlation	,663**
	Sig. (2-tailed)	,000
	N	35
ITEM06	Pearson Correlation	,592**
	Sig. (2-tailed)	,000
	N	35
ITEM07	Pearson Correlation	,749**
	Sig. (2-tailed)	,000
	N	35
ITEM08	Pearson Correlation	,758**
	Sig. (2-tailed)	,000
	N	35
ITEM09	Pearson Correlation	,587**
	Sig. (2-tailed)	,000
	N	35
ITEM10	Pearson Correlation	,743**
	Sig. (2-tailed)	,000
	N	35
ITEM11	Pearson Correlation	,708**
	Sig. (2-tailed)	,000
	N	35
ITEM12	Pearson Correlation	,042
	Sig. (2-tailed)	,811
	N	35
ITEM13	Pearson Correlation	,520**
	Sig. (2-tailed)	,001
	N	35
ITEM14	Pearson Correlation	,615**
	Sig. (2-tailed)	,000
	N	35
ITEM15	Pearson Correlation	,450**
	Sig. (2-tailed)	,007
	N	35
ITEM16	Pearson Correlation	,605**
	Sig. (2-tailed)	,000
	N	35
ITEM17	Pearson Correlation	,552**
	Sig. (2-tailed)	,001
	N	35
ITEM18	Pearson Correlation	,429*
	Sig. (2-tailed)	,010
	N	35

ITEM19	Pearson Correlation	,562**
	Sig. (2-tailed)	,000
	N	35
ITEM20	Pearson Correlation	,469**
	Sig. (2-tailed)	,004
	N	35
Total	Pearson Correlation	1
	Sig. (2-tailed)	
	N	35

Reliability

Scale: ALL VARIABLES

Case Processing Summary

		N	%
Cases	Valid	35	100,0
	Excluded ^a	0	,0
	Total	35	100,0

a. Listwise deletion based on all variables in the procedure.

Reliability Statistics

Cronbach's Alpha	N of Items
,895	19

Item Statistics

	Mean	Std. Deviation	N
ITEM01	3,4286	,55761	35
ITEM02	3,4286	,50210	35
ITEM03	3,2571	,50543	35
ITEM04	2,9714	,56806	35
ITEM05	2,8857	,58266	35
ITEM06	3,2571	,56061	35
ITEM07	3,0286	,70651	35
ITEM08	3,3429	,53922	35
ITEM09	2,9714	,66358	35
ITEM10	3,2571	,61083	35
ITEM11	2,5429	,70054	35
ITEM13	3,4857	,70174	35
ITEM14	2,7429	,70054	35
ITEM15	3,6857	,47101	35
ITEM16	3,5714	,55761	35
ITEM17	3,5143	,56211	35
ITEM18	3,5714	,50210	35
ITEM19	3,0286	,85700	35
ITEM20	3,3429	,48159	35

Scale Statistics

Mean	Variance	Std. Deviation	N of Items
61,3143	45,751	6,76397	19

**HASIL UJI VALIDITAS DAN RELIABILITAS ANGKET
KEAKTIFAN BELAJAR**

Correlations

		Total
	Pearson Correlation	,574**
VAR00001	Sig. (2-tailed)	,000
	N	35
	Pearson Correlation	,644**
VAR00002	Sig. (2-tailed)	,000
	N	35
	Pearson Correlation	,589**
VAR00003	Sig. (2-tailed)	,000
	N	35
	Pearson Correlation	,648**
VAR00004	Sig. (2-tailed)	,000
	N	35
	Pearson Correlation	,505**
VAR00005	Sig. (2-tailed)	,002
	N	35
	Pearson Correlation	,667**
VAR00006	Sig. (2-tailed)	,000
	N	35
	Pearson Correlation	,127
VAR00007	Sig. (2-tailed)	,468
	N	35
	Pearson Correlation	,664**
VAR00008	Sig. (2-tailed)	,000
	N	35
	Pearson Correlation	,621**
VAR00009	Sig. (2-tailed)	,000
	N	35
	Pearson Correlation	,474**
VAR00010	Sig. (2-tailed)	,004
	N	35
	Pearson Correlation	,599**
VAR00011	Sig. (2-tailed)	,000
	N	35
	Pearson Correlation	,577**
VAR00012	Sig. (2-tailed)	,000
	N	35
	Pearson Correlation	,582**
VAR00013	Sig. (2-tailed)	,000
	N	35
	Pearson Correlation	,686**
VAR00014	Sig. (2-tailed)	,000
	N	35
	Pearson Correlation	,391
VAR00015	Sig. (2-tailed)	,020
	N	35
	Pearson Correlation	,604**
VAR00016	Sig. (2-tailed)	,000
	N	35
	Pearson Correlation	,693**
VAR00017	Sig. (2-tailed)	,000
	N	35
	Pearson Correlation	,558**
VAR00018	Sig. (2-tailed)	,000
	N	35

VAR00019	Pearson Correlation	,559**
	Sig. (2-tailed)	,000
	N	35
VAR00020	Pearson Correlation	,048
	Sig. (2-tailed)	,783
	N	35
Total	Pearson Correlation	1
	Sig. (2-tailed)	
	N	35

Reliability
Scale: ALL VARIABLES

Case Processing Summary

		N	%
Cases	Valid	35	100,0
	Excluded ^a	0	,0
	Total	35	100,0

a. Listwise deletion based on all variables in the procedure.

Reliability Statistics

Cronbach's Alpha	N of Items
,890	18

Item Statistics

	Mean	Std. Deviation	N
VAR00001	3,2000	,90098	35
VAR00002	2,8857	,71831	35
VAR00003	2,6571	,76477	35
VAR00004	3,2571	,56061	35
VAR00005	3,0000	,72761	35
VAR00006	3,1714	,66358	35
VAR00008	3,3714	,59832	35
VAR00009	3,4571	,50543	35
VAR00010	3,2857	,45835	35
VAR00011	3,2857	,57248	35
VAR00012	3,1714	,70651	35
VAR00013	3,0286	,61767	35
VAR00014	2,9143	,70174	35
VAR00015	3,1143	,52979	35
VAR00016	3,2000	,58410	35
VAR00017	3,1143	,52979	35
VAR00018	3,0000	,54233	35
VAR00019	3,0571	,59125	35

Scale Statistics

Mean	Variance	Std. Deviation	N of Items
56,1714	45,499	6,74531	18