

Lampiran 1

Daftar Sampel Perusahaan Manufaktur

No	Kode Perusahaan	Nama Perusahaan
1	AISA	Tiga Pilar Sejahtera Food Tbk
2	AKPI	Argha Karya Prima Industry Tbk
3	AMFG	Asahimas Flat Glass Tbk
4	ARNA	Arwana Citra Mulia Tbk
5	ASII	Astra International Tbk
6	AUTO	Astra Auto Part Tbk
7	BRAM	Indo Kordsa Tbk
8	CEKA	Cahaya Kalbar Tbk
9	CPIN	Charoen Pokphand Indonesia Tbk
10	CTBN	Citra Turbindo Tbk
11	DLTA	Delta Djakarta Tbk
12	DVLA	Darya Varia Laboratoria Tbk
13	EKAD	Ekadharma International Tbk
14	ESTI	Ever Shine Textile Industry Tbk
15	FASW	Fajar Surya Wisesa Tbk
16	GDYR	Goodyear Indonesia Tbk
17	GGRM	Gudang Garam Tbk
18	GJTL	Gajah Tunggal Tbk
19	HMSP	Hanjaya Mandala Sampoerna Tbk
20	ICBP	Indofood CBP Sukses Makmur Tbk
21	IGAR	Champion Pasific Indonesia Tbk
22	IKBI	Sumi Indo Kabel Tbk
23	INAF	Indofarma Tbk
24	INAI	Indal Aluminium Industry Tbk
25	INDF	Indofood Sukses Makmur Tbk)
26	INDS	Indospring Tbk
27	INKP	Indah Kiat Pulp & paper Tbk
28	INTP	Indocement Tunggal Prakasa Tbk
29	IPOL	Indopoly Swakarsa Industry Tbk
30	JECC	Jembo Cable Company Tbk
31	JPFA	Japfa Comfeed Indonesia Tbk
32	KAEF	Kimia Farma Tbk
33	KBLI	KMI Wire and Cable Tbk
34	KBLM	Kabelindo Murni Tbk
35	KIAS	Keramika Indonesia Assosiasi Tbk
36	KLBF	Kalbe Farma Tbk
37	KRAS	Krakatau Steel Tbk

38	LION	Lion Metal Works Tbk
39	LMSH	Lionmesh Prima Tbk
40	MASA	Multistrada Arah Sarana Tbk
41	MBTO	Martina Berto Tbk
42	MERK	Merck Tbk
43	MLBI	Multi Bintang Indonesia Tbk
44	MRAT	Mustika Ratu Tbk
45	MYOR	Mayora Indah Tbk
46	NIKL	Pelat Timah Nusantara Tbk
47	ROTI	Nippon Indosari Corporindo Tbk
48	SCCO	Supreme Cable Manufacturing and Commerce Tbk
49	SKLT	Sekar Laut Tbk
50	SMCB	Holcim Indonesia Tbk
51	SMGR	Semen Gresik Tbk
52	SMSM	Selamat Sempurna Tbk
53	SQBI	Taisho Pharmaceutical Indonesia Tbk
54	SRIL	Sri Rejeki Isman Tbk
55	TBMS	Tembaga Mulia Semanan Tbk
56	TCID	Mandom Indonesia Tbk
57	TKIM	TKIM (Pabrik Kertas Tjiwi Kimia
58	TOTO	Surya Toto Indonesia Tbk
59	TPIA	Chandra Asri Petrochemical
60	TRIS	Trisula International Tbk
61	TRST	Trias Sentosa Tbk
62	TSPC	Tempo Scan Pasific Tbk
63	UNIC	Unggul Indah Cahaya Tbk
64	UNVR	Unilever Indonesia Tbk
65	VOKS	Voksel Electric Tbk
66	WIIM	Wismilak Inti Makmur Tbk

Lampiran 2

Perhitungan Likuiditas

No	Kode Perusahaan	Tahun	Aset Lancar	Hutang Lancar	<i>Current Ratio</i>
1	ARNA	2011	261,066	257,011	1.01578
2	AUTO	2011	2,509,443	1,892,818	1.32577
3	BRAM	2011	846,169	303,091	2.79180
4	ESTI	2011	401,853	353,973	1.13526
5	GDYR	2011	593,308	695,224	0.85341
6	GGRM	2011	30,381,754	13,534,319	2.24479
7	GJTL	2011	5,073,477	2,900,317	1.74928
8	IGAR	2011	322,889	55,928	5.77330
9	JECC	2011	521,123	467,758	1.11409
10	JPFA	2011	4,932,300	3,099,991	1.59107
11	KBLM	2011	359,534	385,750	0.93204
12	KLBF	2011	5,993,877	1,630,589	3.67590
13	KRAS	2011	13,213,392	9,204,702	1.43550
14	LION	2011	327,815	46,611	7.03300
15	LMSH	2011	74,304	31,870	2.33147
16	MASA	2011	1,261,845	2,619,116	0.48178
17	MBTO	2011	459,791	112,665	4.08105
18	MERK	2011	491,726	65,431	7.51518
19	MLBI	2011	656,039	659,873	0.99419
20	MRAT	2011	326,474	53,819	6.06615
21	MYOR	2011	4,095,299	1,845,792	2.21872
22	SCCO	2011	1,192,307	923,585	1.29096
23	SMCB	2011	2,468,172	1,683,799	1.46584
24	SMGR	2011	7,646,145	2,889,137	2.64652
25	SMSM	2011	904,456	358,872	2.52027
26	SQBI	2011	277,856	48,868	5.68585
27	TBMS	2011	1,305,242	1,323,254	0.98639
28	TCID	2011	671,882	57,216	11.74290
29	TOTO	2011	837,114	444,637	1.88269
30	TSPC	2011	3,121,980	1,046,406	2.98353
31	UNIC	2011	1,585,721	993,286	1.59644
32	AISA	2012	1,544,940	1,216,997	1.26947
33	AMFG	2012	1,658,468	426,669	3.88701
34	ARNA	2012	261,066	257,011	1.01578
35	ASII	2012	75,799,000	54,178,000	1.39907
36	AUTO	2012	3,205,631	2,751,766	1.16494
37	CPIN	2012	7,180,890	2,167,652	3.31275
38	CTBN	2012	1,905,911	1,065,221	1.78922
39	DLTA	2012	631,333	119,920	5.26462

40	DVLA	2012	826,343	191,718	4.31020
41	EKAD	2012	180,371	74,814	2.41093
42	GDYR	2012	601,069	671,723	0.89482
43	GGRM	2012	29,954,021	13,802,317	2.17022
44	GJTL	2012	5,194,057	3,020,030	1.71987
45	HMSP	2012	21,128,313	11,897,977	1.77579
46	ICBP	2012	9,922,662	3,648,069	2.71998
47	IGAR	2012	265,070	60,747	4.36351
48	INAF	2012	777,629	369,864	2.10247
49	INDF	2012	26,235,990	12,805,200	2.04885
50	INDS	2012	877,636	371,744	2.36086
51	INTP	2012	14,579,400	2,418,762	6.02763
52	IPOL	2012	819,610	936,446	0.87523
53	JECC	2012	614,693	531,672	1.15615
54	JPFA	2012	6,429,500	3,523,891	1.82455
55	KAEF	2012	1,505,798	537,184	2.80313
56	KBLI	2012	751,100	244,597	3.07077
57	KBLM	2012	430,524	441,527	0.97508
58	KLBF	2012	6,441,711	1,891,618	3.40540
59	MERK	2012	463,883	119,828	3.87124
60	MLBI	2012	462,471	796,679	0.58050
61	MRAT	2012	352,880	58,646	6.01712
62	MYOR	2012	5,313,600	1,924,434	2.76112
63	ROTI	2012	219,818	195,456	1.12464
64	SCCO	2012	1,197,203	818,847	1.46206
65	SKLT	2012	125,667	88,825	1.41477
66	SMCB	2012	2,186,797	1,556,875	1.40461
67	SMGR	2012	8,231,297	4,825,205	1.70590
68	SQBI	2012	307,407	63,322	4.85466
69	TCID	2012	768,615	99,477	7.72656
70	TOTO	2012	966,806	448,768	2.15436
71	TSPC	2012	3,393,778	1,097,135	3.09331
72	UNIC	2012	1,514,799	907,230	1.66970
73	UNVR	2012	4,390,094	6,890,832	0.63709
74	VOKS	2012	1,430,617	1,072,478	1.33394
75	WIIM	2012	1,049,445	508,892	2.06222
76	AKPI	2013	943,606	696,166	1.35543
77	ARNA	2013	405,106	311,781	1.29933
78	ASII	2013	88,352,000	71,139,000	1.24196
79	AUTO	2013	4,986,682	2,661,312	1.87377
80	CEKA	2013	847,046	518,962	1.63219
81	CPIN	2013	8,824,900	2,327,048	3.79232
82	CTBN	2013	2,431,045	1,359,126	1.78868

83	DLTA	2013	748,111	158,991	4.70537
84	DVLA	2013	913,984	215,473	4.24176
85	EKAD	2013	229,041	98,355	2.32872
86	GDYR	2013	612,310	652,499	0.93841
87	GJTL	2013	6,843,853	2,964,235	2.30881
88	HMSP	2013	21,247,830	12,123,790	1.75257
89	ICBP	2013	11,321,715	4,696,583	2.41063
90	INDF	2013	32,772,095	19,471,309	1.68310
91	INDS	2013	1,086,591	281,799	3.85591
92	INTP	2013	16,846,248	2,740,089	6.14807
93	JPFA	2013	9,004,667	4,361,546	2.06456
94	KLBF	2013	7,497,319	2,640,590	2.83926
95	LION	2013	428,821	63,729	6.72882
96	LMSH	2013	115,485	27,519	4.19656
97	MERK	2013	588,238	147,818	3.97947
98	MLBI	2013	706,252	722,542	0.97745
99	NIKL	2013	1,127,687	950,496	1.18642
100	ROTI	2013	363,881	320,197	1.13643
101	SCCO	2013	1,454,622	1,043,363	1.39417
102	SMCB	2013	2,085,055	3,262,054	0.63918
103	SMGR	2013	9,972,110	5,297,631	1.88237
104	SQBI	2013	329,045	66,234	4.96792
105	SRIL	2013	2,342,148	2,232,337	1.04919
106	TCID	2013	726,505	203,321	3.57319
107	TOTO	2013	1,089,799	496,495	2.19498
108	TPIA	2013	9,959,350	7,579,167	1.31404
109	TRIS	2013	344,827	149,729	2.30301
110	UNIC	2013	2,330,491	1,329,113	1.75342
111	UNVR	2013	5,218,219	7,774,722	0.67118
112	WIIM	2013	993,886	409,006	2.43000
113	AKPI	2014	920,128	812,877	1.13194
114	ASII	2014	97,241,000	73,523,000	1.32259
115	AUTO	2014	5,138,080	3,857,809	1.33186
116	BRAM	2014	1,360,531	961,082	1.41562
117	CPIN	2014	10,009,670	4,467,240	2.24068
118	EKAD	2014	296,439	127,249	2.32960
119	FASW	2014	1,795,623	1,838,653	0.97660
120	GJTL	2014	6,283,252	3,116,223	2.01630
121	ICBP	2014	13,603,527	6,230,997	2.18320
122	IKBI	2014	676,110	137,492	4.91745
123	INAI	2014	644,378	595,336	1.08238
124	INDF	2014	40,995,736	22,681,686	1.80744
125	INDS	2014	975,954	335,123	2.91223

126	INKP	2014	20,612,745	14,924,630	1.38112
127	INTP	2014	16,086,773	3,260,559	4.93375
128	KAEF	2014	2,040,431	854,812	2.38699
129	KIAS	2014	793,535	141,425	5.61100
130	KLBF	2014	8,120,805	2,385,920	3.40364
131	MERK	2014	595,339	129,820	4.58588
132	MLBI	2014	816,494	1,588,801	0.51391
133	SMGR	2014	11,648,545	5,273,269	2.20898
134	SMSM	2014	1,113,730	536,800	2.07476
135	SRIL	2014	4,005,530	751,756	5.32823
136	TCID	2014	874,017	486,054	1.79819
137	TKIM	2014	13,276,462	6,987,179	1.90012
138	TOTO	2014	1,115,004	528,815	2.10850
139	TRIS	2014	387,853	193,750	2.00182
140	TRST	2014	1,182,293	955,176	1.23778
141	WIIM	2014	999,717	439,446	2.27495

Lampiran 3

Perhitungan *Leverage*

No	Kode Perusahaan	Tahun	Total Hutang	Total Ekuitas	<i>Debt Equity Ratio</i>
1	ARNA	2011	348,334	483,173	0.72093
2	AUTO	2011	2,241,333	4,722,894	0.47457
3	BRAM	2011	498,632	1,398,362	0.35658
4	ESTI	2011	379,490	257,441	1.47409
5	GDYR	2011	758,327	427,788	1.77267
6	GGRM	2011	14,537,777	24,550,928	0.59215
7	GJTL	2011	7,123,318	4,430,825	1.60767
8	IGAR	2011	64,994	290,586	0.22367
9	JECC	2011	499,541	127,497	3.91806
10	JPFA	2011	4,481,070	3,785,347	1.18379
11	KBLM	2011	398,591	244,364	1.63114
12	KLBF	2011	1,758,619	6,515,935	0.26990
13	KRAS	2011	11,156,569	10,354,993	1.07741
14	LION	2011	63,755	302,060	0.21107
15	LMSH	2011	40,816	57,203	0.71353
16	MASA	2011	2,969,322	1,767,027	1.68041
17	MBTO	2011	141,132	400,542	0.35235
18	MERK	2011	90,207	494,182	0.18254
19	MLBI	2011	690,545	530,268	1.30226
20	MRAT	2011	64,064	358,429	0.17874
21	MYOR	2011	4,175,176	2,424,669	1.72196
22	SCCO	2011	936,368	519,253	1.80330
23	SMCB	2011	3,423,241	7,527,260	0.45478
24	SMGR	2011	5,046,501	14,615,097	0.34529
25	SMSM	2011	566,978	878,297	0.64554
26	SQBI	2011	59,256	302,500	0.19589
27	TBMS	2011	1,326,314	157,836	8.40311
28	TCID	2011	110,452	1,020,413	0.10824
29	TOTO	2011	579,029	760,541	0.76134
30	TSPC	2011	1,204,439	3,045,935	0.39543
31	UNIC	2011	1,263,536	1,281,436	0.98603
32	AISA	2012	1,834,123	2,033,453	0.90197
33	AMFG	2012	658,332	2,457,089	0.26793
34	ARNA	2012	348,334	483,173	0.72093
35	ASII	2012	92,460,000	89,814,000	1.02946
36	AUTO	2012	3,396,543	5,485,099	0.61923
37	CPIN	2012	4,172,163	8,176,464	0.51026
38	CTBN	2012	1,216,777	1,379,023	0.88235
39	DLTA	2012	147,095	598,212	0.24589

40	DVLA	2012	233,145	841,546	0.27704
41	EKAD	2012	81,916	191,978	0.42669
42	GDYR	2012	688,359	509,202	1.35184
43	GGRM	2012	14,903,612	26,605,713	0.56017
44	GJTL	2012	7,391,409	5,478,384	1.34920
45	HMSP	2012	12,939,107	13,308,420	0.97225
46	ICBP	2012	5,835,523	11,984,361	0.48693
47	IGAR	2012	70,314	242,029	0.29052
48	INAF	2012	538,517	650,102	0.82836
49	INDF	2012	25,249,168	34,140,237	0.73957
50	INDS	2012	528,206	1,136,573	0.46474
51	INTP	2012	3,336,422	19,418,736	0.17181
52	IPOL	2012	1,371,276	1,363,669	1.00558
53	JECC	2012	566,079	142,876	3.96203
54	JPFA	2012	6,198,137	4,763,327	1.30122
55	KAEF	2012	634,814	1,441,534	0.44037
56	KBLI	2012	316,557	845,141	0.37456
57	KBLM	2012	458,195	264,746	1.73070
58	KLBF	2012	2,046,314	7,371,644	0.27759
59	MERK	2012	152,689	416,742	0.36639
60	MLBI	2012	822,195	329,853	2.49261
61	MRAT	2012	69,586	385,887	0.18033
62	MYOR	2012	5,234,656	3,067,850	1.70629
63	ROTI	2012	538,337	666,608	0.80758
64	SCCO	2012	832,877	654,045	1.27342
65	SKLT	2012	120,264	129,483	0.92880
66	SMCB	2012	3,750,461	8,418,056	0.44553
67	SMGR	2012	8,414,229	18,164,855	0.46321
68	SQBI	2012	71,785	325,359	0.22063
69	TCID	2012	164,751	1,096,822	0.15021
70	TOTO	2012	624,499	898,165	0.69531
71	TSPC	2012	1,279,829	3,353,156	0.38168
72	UNIC	2012	1,049,539	1,351,239	0.77672
73	UNVR	2012	7,707,888	3,968,365	1.94233
74	VOKS	2012	1,095,012	603,066	1.81574
75	WIIM	2012	550,947	656,304	0.83947
76	AKPI	2013	1,055,231	1,029,336	1.02516
77	ARNA	2013	366,755	768,490	0.47724
78	ASII	2013	107,806,000	106,188,000	1.01524
79	AUTO	2013	3,058,924	9,558,754	0.32001
80	CEKA	2013	541,352	528,275	1.02475
81	CPIN	2013	5,771,297	9,950,900	0.57998

82	CTBN	2013	1,512,256	1,851,581	0.81674
83	DLTA	2013	190,483	676,558	0.28155
84	DVLA	2013	275,351	914,703	0.30103
85	EKAD	2013	105,894	237,708	0.44548
86	GDYR	2013	672,669	689,892	0.97504
87	GJTL	2013	9,626,411	5,724,782	1.68153
88	HMSP	2013	13,249,559	14,155,305	0.93601
89	ICBP	2013	8,001,739	13,265,731	0.60319
90	INDF	2013	39,719,660	37,891,756	1.04824
91	INDS	2013	443,653	1,752,866	0.25310
92	INTP	2013	3,629,554	22,977,687	0.15796
93	JPFA	2013	9,672,368	5,245,222	1.84403
94	KLBF	2013	2,815,103	8,499,976	0.33119
95	LION	2013	82,784	415,784	0.19910
96	LMSH	2013	31,229	110,468	0.28270
97	MERK	2013	184,728	512,219	0.36064
98	MLBI	2013	794,615	987,533	0.80465
99	NIKL	2013	999,809	526,825	1.89780
100	ROTI	2013	1,035,351	787,338	1.31500
101	SCCO	2013	1,054,421	707,611	1.49011
102	SMCB	2013	6,122,043	8,772,947	0.69783
103	SMGR	2013	8,988,908	21,803,976	0.41226
104	SQBI	2013	74,136	347,052	0.21362
105	SRIL	2013	3,271,382	2,319,599	1.41032
106	TCID	2013	282,962	1,182,991	0.23919
107	TOTO	2013	710,527	1,035,650	0.68607
108	TPIA	2013	12,909,451	10,494,813	1.23008
109	TRIS	2013	166,703	282,306	0.59050
110	UNIC	2013	1,519,505	1,784,436	0.85153
111	UNVR	2013	8,448,798	4,254,670	1.98577
112	WIIM	2013	447,652	781,359	0.57291
113	AKPI	2014	1,191,197	1,035,935	1.14988
114	ASII	2014	115,705,000	120,324,000	0.96161
115	AUTO	2014	4,244,369	14,380,926	0.29514
116	BRAM	2014	1,612,295	2,221,700	0.72570
117	CPIN	2014	9,919,150	10,943,289	0.90641
118	EKAD	2014	138,150	273,199	0.50568
119	FASW	2014	3,936,323	1,644,678	2.39337
120	GJTL	2014	10,059,605	5,983,382	1.68126
121	ICBP	2014	9,870,264	15,039,947	0.65627
122	IKBI	2014	183,724	804,211	0.22845
123	INAI	2014	751,440	145,842	5.15243

124	INDF	2014	44,710,509	41,228,376	1.08446
125	INDS	2014	454,348	1,828,319	0.24851
126	INKP	2014	51,123,165	29,950,514	1.70692
127	INTP	2014	4,100,172	24,784,801	0.16543
128	KAEF	2014	1,157,041	1,789,213	0.64668
129	KIAS	2014	235,746	2,116,797	0.11137
130	KLBF	2014	2,607,557	9,817,476	0.26560
131	MERK	2014	162,909	553,691	0.29422
132	MLBI	2014	1,677,254	553,797	3.02864
133	SMGR	2014	9,312,214	25,002,452	0.37245
134	SMSM	2014	602,558	1,146,837	0.52541
135	SRIL	2014	5,793,302	2,897,795	1.99921
136	TCID	2014	569,731	1,283,504	0.44389
137	TKIM	2014	22,131,466	11,581,734	1.91089
138	TOTO	2014	796,096	1,231,192	0.64661
139	TRIS	2014	214,390	309,510	0.69268
140	TRST	2014	1,499,792	1,761,493	0.85143
141	WIIM	2014	478,483	854,425	0.56001

Lampiran 4

Perhitungan Profitabilitas

No	Kode Perusahaan	Tahun	EBIT	Total Aset	<i>Return On Asset</i>
1	ARNA	2011	148,972	831,508	0.17916
2	AUTO	2011	519,548	6,964,227	0.07460
3	BRAM	2011	189,860	1,896,994	0.10008
4	ESTI	2011	14,928	636,930	0.02344
5	GDYR	2011	33,028	1,186,115	0.02785
6	GGRM	2011	6,838,642	39,088,705	0.17495
7	GJTL	2011	1,009,571	11,609,514	0.08696
8	IGAR	2011	67,165	355,580	0.18889
9	JECC	2011	59,622	627,038	0.09509
10	JPFA	2011	1,107,005	8,266,417	0.13392
11	KBLM	2011	44,702	642,955	0.06953
12	KLBF	2011	1,942,237	8,274,554	0.23472
13	KRAS	2011	358,571	21,511,562	0.01667
14	LION	2011	58,918	365,816	0.16106
15	LMSH	2011	15,775	98,019	0.16094
16	MASA	2011	282,271	4,736,349	0.05960
17	MBTO	2011	46,919	541,674	0.08662
18	MERK	2011	198,582	584,389	0.33981
19	MLBI	2011	680,851	1,220,813	0.55770
20	MRAT	2011	41,513	422,493	0.09826
21	MYOR	2011	757,877	6,559,846	0.11553
22	SCCO	2011	168,228	1,455,621	0.11557
23	SMCB	2011	1,701,046	10,950,501	0.15534
24	SMGR	2011	4,892,132	19,661,603	0.24882
25	SMSM	2011	296,506	1,445,275	0.20516
26	SQBI	2011	162,078	361,756	0.44803
27	TBMS	2011	37,382	1,484,150	0.02519
28	TCID	2011	193,065	1,130,865	0.17072
29	TOTO	2011	299,798	1,339,570	0.22380
30	TSPC	2011	567,788	4,250,374	0.13359
31	UNIC	2011	120,396	2,544,972	0.04731
32	AISA	2012	425,965	3,867,576	0.11014
33	AMFG	2012	447,620	3,115,421	0.14368
34	ARNA	2012	224,434	831,508	0.26991
35	ASII	2012	19,870,000	182,274,000	0.10901
36	AUTO	2012	4,785,534	8,881,642	0.53881
37	CPIN	2012	3,458,680	12,348,627	0.28009
38	CTBN	2012	363,516	2,595,800	0.14004

39	DLTA	2012	282,087	745,307	0.37848
40	DVLA	2012	196,166	1,074,691	0.18253
41	EKAD	2012	47,676	273,893	0.17407
42	GDYR	2012	102,534	1,198,261	0.08557
43	GGRM	2012	6,007,206	41,509,325	0.14472
44	GJTL	2012	1,289,426	12,869,793	0.10019
45	HMSP	2012	13,350,450	26,247,527	0.50864
46	ICBP	2012	6,870,594	17,819,884	0.38556
47	IGAR	2012	54,332	312,343	0.17395
48	INAF	2012	83,309	1,186,619	0.07021
49	INDF	2012	6,870,594	59,389,405	0.11569
50	INDS	2012	212,872	1,664,779	0.12787
51	INTP	2012	5,876,742	22,755,160	0.25826
52	IPOL	2012	158,116	2,734,945	0.05781
53	JECC	2012	74,729	708,955	0.10541
54	JPFA	2012	1,668,254	10,961,464	0.15219
55	KAEF	2012	285,157	2,076,348	0.13734
56	KBLI	2012	180,837	1,161,698	0.15567
57	KBLM	2012	46,649	722,941	0.06453
58	KLBF	2012	2,200,247	9,417,957	0.23362
59	MERK	2012	141,840	569,431	0.24909
60	MLBI	2012	601,886	1,152,048	0.52245
61	MRAT	2012	41,592	455,473	0.09132
62	MYOR	2012	1,156,560	8,302,506	0.13930
63	ROTI	2012	199,403	1,204,945	0.16549
64	SCCO	2012	197,773	1,486,921	0.13301
65	SKLT	2012	9,870	249,746	0.03952
66	SMCB	2012	2,038,457	12,168,517	0.16752
67	SMGR	2012	6,181,524	26,579,084	0.23257
68	SQBI	2012	171,457	397,144	0.43173
69	TCID	2012	210,086	1,261,573	0.16653
70	TOTO	2012	373,432	1,522,664	0.24525
71	TSPC	2012	107,807	4,632,985	0.02327
72	UNIC	2012	84,808	2,400,778	0.03533
73	UNVR	2012	6,454,808	11,339,111	0.56925
74	VOKS	2012	217,242	1,698,078	0.12793
75	WIIM	2012	115,347	1,207,251	0.09555
76	AKPI	2013	90,836	2,084,567	0.04358
77	ARNA	2013	321,297	1,135,245	0.28302
78	ASII	2013	25,949,000	213,994,000	0.12126
79	AUTO	2013	671,799	12,484,843	0.05381
80	CEKA	2013	90,910	1,069,627	0.08499

81	CPIN	2013	3,578,297	15,722,197	0.22760
82	CTBN	2013	580,141	3,363,836	0.17246
83	DLTA	2013	337,305	867,041	0.38903
84	DVLA	2013	167,079	1,190,054	0.14040
85	EKAD	2013	56,367	343,602	0.16405
86	GDYR	2013	137,598	1,362,561	0.10098
87	GJTL	2013	789,195	15,350,754	0.05141
88	HMSP	2013	14,600,256	27,404,594	0.53277
89	ICBP	2013	2,771,924	21,267,470	0.13034
90	INDF	2013	6,717,981	77,611,416	0.08656
91	INDS	2013	24,426	2,196,518	0.01112
92	INTP	2013	6,064,100	26,607,241	0.22791
93	JPFA	2013	1,802,636	14,917,590	0.12084
94	KLBF	2013	2,520,277	11,315,061	0.22274
95	LION	2013	74,475	498,568	0.14938
96	LMSH	2013	18,045	141,698	0.12735
97	MERK	2013	482,047	696,946	0.69166
98	MLBI	2013	1,553,106	1,782,148	0.87148
99	NIKL	2013	37,890	1,526,633	0.02482
100	ROTI	2013	232,391	1,822,689	0.12750
101	SCCO	2013	143,300	1,762,032	0.08133
102	SMCB	2013	1,848,668	14,894,990	0.12411
103	SMGR	2013	6,972,385	30,792,884	0.22643
104	SQBI	2013	184,776	421,188	0.43870
105	SRIL	2013	667,896	5,590,982	0.11946
106	TCID	2013	225,889	1,465,952	0.15409
107	TOTO	2013	347,408	1,746,178	0.19895
108	TPIA	2013	105,154	23,404,264	0.00449
109	TRIS	2013	57,884	449,009	0.12892
110	UNIC	2013	277,120	3,303,941	0.08388
111	UNVR	2013	7,121,743	12,703,468	0.56061
112	WIIM	2013	180,201	1,229,011	0.14662
113	AKPI	2014	103,529	2,227,043	0.04649
114	ASII	2014	20,163,000	236,029,000	0.08543
115	AUTO	2014	464,008	14,380,926	0.03227
116	BRAM	2014	277,293	3,833,995	0.07232
117	CPIN	2014	2,367,748	20,592,439	0.11498
118	EKAD	2014	59,704	411,349	0.14514
119	FASW	2014	231,731	5,581,001	0.04152
120	GJTL	2014	532,628	16,042,897	0.03320
121	ICBP	2014	3,128,693	24,910,211	0.12560
122	IKBI	2014	33,772	987,936	0.03418

123	INAI	2014	30,504	897,282	0.03400
124	INDF	2014	7,208,732	85,938,885	0.08388
125	INDS	2014	182,465	2,282,666	0.07994
126	INKP	2014	2,389,913	81,073,679	0.02948
127	INTP	2014	5,974,993	28,884,973	0.20685
128	KAEF	2014	342,481	2,968,185	0.11538
129	KIAS	2014	92,484	2,352,543	0.03931
130	KLBF	2014	2,709,035	12,425,032	0.21803
131	MERK	2014	200,436	716,600	0.27970
132	MLBI	2014	1,149,988	2,231,051	0.51545
133	SMGR	2014	6,953,740	34,314,666	0.20265
134	SMSM	2014	215,071	1,749,395	0.12294
135	SRIL	2014	1,173,481	8,691,096	0.13502
136	TCID	2014	254,429	1,853,235	0.13729
137	TKIM	2014	272,622	33,713,200	0.00809
138	TOTO	2014	388,608	2,027,289	0.19169
139	TRIS	2014	52,586	523,901	0.10037
140	TRST	2014	75,894	3,261,285	0.02327
141	WIIM	2014	162,288	1,332,908	0.12175

Lampiran 5

Perhitungan Kebijakan Dividen

No	Kode Perusahaan	Tahun	Dividen Per Share	Earning Per Share	<i>Dividen Payout Ratio</i>
1	ARNA	2011	20	52	0.38462
2	AUTO	2011	75	1,434	0.05230
3	BRAM	2011	50	122	0.40984
4	ESTI	2011	1	2	0.50000
5	GDYR	2011	260	28	9.28571
6	GGRM	2011	1,000	2,577	0.38805
7	GJTL	2011	10	260	0.03846
8	IGAR	2011	75	53	1.41509
9	JECC	2011	110	190	0.57895
10	JPFA	2011	75	314	0.23885
11	KBLM	2011	3	17	0.17647
12	KLBF	2011	95	152	0.62500
13	KRAS	2011	15	65	0.23077
14	LION	2011	300	1,010	0.29703
15	LMSH	2011	100	1,135	0.08811
16	MASA	2011	2	23	0.08696
17	MBTO	2011	10	40	0.25000
18	MERK	2011	8	10,320	0.00078
19	MLBI	2011	6,950	24,081	0.28861
20	MRAT	2011	16	60	0.26667
21	MYOR	2011	130	631	0.20602
22	SCCO	2011	170	534	0.31835
23	SMCB	2011	31	138	0.22464
24	SMGR	2011	331	667	0.49625
25	SMSM	2011	610	168	3.63095
26	SQBI	2011	11	11,725	0.00094
27	TBMS	2011	200	241	0.82988
28	TCID	2011	370	698	0.53009
29	TOTO	2011	1,000	4,415	0.22650
30	TSPC	2011	75	130	0.57692
31	UNIC	2011	90	148	0.60811
32	AISA	2012	8	87	0.09195
33	AMFG	2012	80	799	0.10013
34	ARNA	2012	20	52	0.38462
35	ASII	2012	150	555	0.27027
36	AUTO	2012	87	279	0.31183
37	CPIN	2012	46	163	0.28221

38	CTBN	2012	298	417	0.71463
39	DLTA	2012	11,500	13,328	0.86285
40	DVLA	2012	35	133	0.26316
41	EKAD	2012	8	70	0.11429
42	GDYR	2012	275	1,575	0.17460
43	GGRM	2012	800	2,115	0.37825
44	GJTL	2012	27	312	0.08654
45	HMSP	2012	1,300	2,237	0.58114
46	ICBP	2012	186	392	0.47449
47	IGAR	2012	40	42	0.95238
48	INAF	2012	1	14	0.07143
49	INDF	2012	185	555	0.33333
50	INDS	2012	475	1,715	0.27697
51	INTP	2012	450	1,294	0.34776
52	IPOL	2012	1	10	0.10000
53	JECC	2012	120	212	0.56604
54	JPFA	2012	20	501	0.03992
55	KAEF	2012	6	37	0.16216
56	KBLI	2012	8	31	0.25806
57	KBLM	2012	3	21	0.14286
58	KLBF	2012	19	35	0.54286
59	MERK	2012	4	4,813	0.00083
60	MLBI	2012	15	21,519	0.00070
61	MRAT	2012	17	80	0.21250
62	MYOR	2012	230	269	0.85502
63	ROTI	2012	37	147	0.25170
64	SCCO	2012	250	826	0.30266
65	SKLT	2012	3	12	0.25000
66	SMCB	2012	80	180	0.44444
67	SMGR	2012	368	831	0.44284
68	SQBI	2012	13	13,208	0.00098
69	TCID	2012	370	750	0.49333
70	TOTO	2012	100	478	0.20921
71	TSPC	2012	75	143	0.52448
72	UNIC	2012	38	53	0.71698
73	UNVR	2012	334	634	0.52681
74	VOKS	2012	50	177	0.28249
75	WIIM	2012	4	37	0.10811
76	AKPI	2013	17	274	0.06204
77	ARNA	2013	16	130	0.12308
78	ASII	2013	152	586	0.25939
79	AUTO	2013	84	216	0.38889

80	CEKA	2013	100	218	0.45872
81	CPIN	2013	46	154	0.29870
82	CTBN	2013	18	4,682	0.00384
83	DLTA	2013	12,000	16,892	0.71040
84	DVLA	2013	22	112	0.19643
85	EKAD	2013	9	73	0.12329
86	GDYR	2013	300	1,094	0.27422
87	GJTL	2013	10	98	0.10204
88	HMSP	2013	927	2,466	0.37591
89	ICBP	2013	190	392	0.48469
90	INDF	2013	142	558	0.25448
91	INDS	2013	100	783	0.12771
92	INTP	2013	900	1,417	0.63514
93	JPFA	2013	10	79	0.12658
94	KLBF	2013	17	43	0.39535
95	LION	2013	400	1,245	0.32129
96	LMSH	2013	200	11,507	0.01738
97	MERK	2013	6	7,832	0.00077
98	MLBI	2013	46,076	56,593	0.81416
99	NIKL	2013	1	1	1.00000
100	ROTI	2013	3	156	0.01923
101	SCCO	2013	150	511	0.29354
102	SMCB	2013	53	131	0.40458
103	SMGR	2013	407	987	0.41236
104	SQBI	2013	14	14,602	0.00096
105	SRIL	2013	2	17	0.11765
106	TCID	2013	370	799	0.46308
107	TOTO	2013	100	478	0.20921
108	TPIA	2013	10	23	0.43478
109	TRIS	2013	10	48	0.20833
110	UNIC	2013	104	230	0.45217
111	UNVR	2013	371	702	0.52849
112	WIIM	2013	19	63	0.30159
113	AKPI	2014	8	25	0.32000
114	ASII	2014	152	547	0.27788
115	AUTO	2014	72	239	0.30126
116	BRAM	2014	100	366	0.27322
117	CPIN	2014	18	107	0.16822
118	EKAD	2014	9	60	0.15000
119	FASW	2014	15	35	0.42857
120	GJTL	2014	10	84	0.11905
121	ICBP	2014	222	433	0.51270

122	IKBI	2014	27	79	0.34177
123	INAI	2014	35	70	0.50000
124	INDF	2014	220	548	0.40146
125	INDS	2014	55	195	0.28205
126	INKP	2014	10	287	0.03484
127	INTP	2014	1,350	1,400	0.96429
128	KAEF	2014	5	43	0.11628
129	KIAS	2014	2	6	0.33333
130	KLBF	2014	19	45	0.42222
131	MERK	2014	6,500	8,101	0.80237
132	MLBI	2014	138	37,402	0.00369
133	SMGR	2014	375	942	0.39809
134	SMSM	2014	25	292	0.08562
135	SRIL	2014	6	29	0.20690
136	TCID	2014	370	870	0.42529
137	TKIM	2014	10	205	0.04878
138	TOTO	2014	120	297	0.40404
139	TRIS	2014	10	34	0.29412
140	TRST	2014	5	23	0.21739
141	WIIM	2014	14	54	0.25926

Lampiran 6

Perhitungan Nilai Perusahaan

No	Kode Perusahaan	Tahun	Closing Price	Equity Per Share	<i>Price to Book Value</i>
1	ARNA	2011	365	263	1.38783
2	AUTO	2011	3,400	6,124	0.55519
3	BRAM	2011	2,150	591	3.63790
4	ESTI	2011	160	128	1.25000
5	GDYR	2011	9,550	602	15.86379
6	GGRM	2011	62,050	12,760	4.86285
7	GJTL	2011	3,000	1,271	2.36035
8	IGAR	2011	475	277	1.71480
9	JECC	2011	600	843	0.71174
10	JPFA	2011	3,850	1,827	2.10728
11	KBLM	2011	114	220	0.51818
12	KLBF	2011	3,400	642	5.29595
13	KRAS	2011	840	656	1.28049
14	LION	2011	5,250	5,807	0.90408
15	LMSH	2011	5,000	5,959	0.83907
16	MASA	2011	500	289	1.73010
17	MBTO	2011	410	374	1.09626
18	MERK	2011	132,500	22,062	6.00580
19	MLBI	2011	359,000	25,167	14.26471
20	MRAT	2011	500	837	0.59737
21	MYOR	2011	14,250	3,163	4.50522
22	SCCO	2011	3,125	2,526	1.23713
23	SMCB	2011	2,175	982	2.21487
24	SMGR	2011	11,450	2,464	4.64692
25	SMSM	2011	1,360	610	2.22951
26	SQBI	2011	127,500	29,541	4.31604
27	TBMS	2011	5,900	1,399	4.21730
28	TCID	2011	7,700	5,075	1.51724
29	TOTO	2011	50,000	15,353	3.25669
30	TSPC	2011	2,550	677	3.76662
31	UNIC	2011	2,000	3,343	0.59827
32	AISA	2012	1,080	695	1.55396
33	AMFG	2012	8,300	5,661	1.46617
34	ARNA	2012	365	263	1.38783
35	ASII	2012	7,600	2,219	3.42497
36	AUTO	2012	3,700	1,423	2.60014

37	CPIN	2012	3,650	499	7.31463
38	CTBN	2012	4,400	1,724	2.55220
39	DLTA	2012	255,000	37,357	6.82603
40	DVLA	2012	1,690	751	2.25033
41	EKAD	2012	350	275	1.27273
42	GDYR	2012	12,300	12,446	0.98827
43	GGRM	2012	56,300	13,828	4.07145
44	GJTL	2012	2,225	1,572	1.41539
45	HMSP	2012	59,900	3,036	19.72991
46	ICBP	2012	7,800	2,055	3.79562
47	IGAR	2012	375	231	1.62338
48	INAF	2012	330	210	1.57143
49	INDF	2012	5,850	3,888	1.50463
50	INDS	2012	4,200	3,608	1.16408
51	INTP	2012	22,450	5,275	4.25592
52	IPOL	2012	106	194	0.54639
53	JECC	2012	1,900	945	2.01058
54	JPFA	2012	6,150	2,216	2.77527
55	KAEF	2012	740	260	2.84615
56	KBLI	2012	187	211	0.88626
57	KBLM	2012	135	238	0.56723
58	KLBF	2012	1,060	145	7.31034
59	MERK	2012	152,000	18,065	8.41406
60	MLBI	2012	740,000	15,655	47.26924
61	MRAT	2012	490	902	0.54324
62	MYOR	2012	20,000	4,002	4.99750
63	ROTI	2012	6,900	658	10.48632
64	SCCO	2012	4,050	3,181	1.27318
65	SKLT	2012	180	187	0.96257
66	SMCB	2012	2,900	1,099	2.63876
67	SMGR	2012	15,850	3,062	5.17636
68	SQBI	2012	238,000	31,773	7.49064
69	TCID	2012	11,000	5,455	2.01650
70	TOTO	2012	6,650	1,813	3.66795
71	TSPC	2012	3,725	745	5.00000
72	UNIC	2012	2,000	3,525	0.56738
73	UNVR	2012	20,850	520	40.09615
74	VOKS	2012	1,030	726	1.41873
75	WIIM	2012	760	37	20.54054
76	AKPI	2013	810	1,514	0.53501
77	ARNA	2013	820	419	1.95704
78	ASII	2013	6,800	2,623	2.59245

79	AUTO	2013	3,650	1,983	1.84065
80	CEKA	2013	1,160	1,776	0.65315
81	CPIN	2013	3,375	607	5.56013
82	CTBN	2013	4,500	18,516	0.24303
83	DLTA	2013	380,000	42,250	8.99408
84	DVLA	2013	2,200	817	2.69278
85	EKAD	2013	390	340	1.14706
86	GDYR	2013	19,000	13,271	1.43169
87	GJTL	2013	1,680	1,643	1.02252
88	HMSP	2013	62,400	3,230	19.31889
89	ICBP	2013	10,200	2,275	4.48352
90	INDF	2013	6,600	4,315	1.52955
91	INDS	2013	2,675	3,339	0.80114
92	INTP	2013	20,000	6,242	3.20410
93	JPFA	2013	1,220	630	1.93651
94	KLBF	2013	1,250	181	6.90608
95	LION	2013	12,000	7,993	1.50131
96	LMSH	2013	8,000	11,507	0.69523
97	MERK	2013	189,000	22,867	8.26519
98	MLBI	2013	1,200,000	46,869	25.60328
99	NIKL	2013	164	160	1.02500
100	ROTI	2013	1,020	778	1.31105
101	SCCO	2013	4,400	3,442	1.27833
102	SMCB	2013	2,275	1,145	1.98690
103	SMGR	2013	14,150	3,676	3.84929
104	SQBI	2013	304,000	33,892	8.96967
105	SRIL	2013	245	125	1.96000
106	TCID	2013	11,900	5,884	2.02243
107	TOTO	2013	7,700	2,091	3.68245
108	TPIA	2013	2,975	2,376	1.25210
109	TRIS	2013	400	282	1.41844
110	UNIC	2013	1,910	4,655	0.41031
111	UNVR	2013	26,000	558	46.59498
112	WIIM	2013	670	372	1.80108
113	AKPI	2014	830	1,523	0.54498
114	ASII	2014	7,425	2,972	2.49832
115	AUTO	2014	4,200	2,984	1.40751
116	BRAM	2014	5,000	3,836	1.30344
117	CPIN	2014	3,780	667	5.66717
118	EKAD	2014	515	391	1.31714
119	FASW	2014	1,650	664	2.48494
120	GJTL	2014	1,425	1,717	0.82994

121	ICBP	2014	13,100	2,579	5.07949
122	IKBI	2014	1,040	2,628	0.39574
123	INAI	2014	350	460	0.76087
124	INDF	2014	6,750	4,695	1.43770
125	INDS	2014	1,600	2,786	0.57430
126	INKP	2014	1,045	5,474	0.19090
127	INTP	2014	25,000	6,733	3.71306
128	KAEF	2014	1,465	322	4.54969
129	KIAS	2014	147	144	1.02083
130	KLBF	2014	1,830	209	8.75598
131	MERK	2014	160,000	24,718	6.47302
132	MLBI	2014	11,950	26,284	0.45465
133	SMGR	2014	16,200	4,215	3.84342
134	SMSM	2014	4,750	797	5.95985
135	SRIL	2014	163	153	1.06536
136	TCID	2014	17,525	6,383	2.74557
137	TKIM	2014	850	8,671	0.09803
138	TOTO	2014	3,975	1,243	3.19791
139	TRIS	2014	356	297	1.19865
140	TRST	2014	380	627	0.60606
141	WIIM	2014	625	407	1.53563

Lampiran 7

Tabulasi Data

No	Kode Perusahaan	Tahun	Current Ratio	DER	ROA	DPR	PBV
1	ARNA	2011	1.01578	0.72093	0.17916	0.38462	1.38783
2	AUTO	2011	1.32577	0.47457	0.07460	0.05230	0.55519
3	BRAM	2011	2.79180	0.35658	0.10008	0.40984	3.63790
4	ESTI	2011	1.13526	1.47409	0.02344	0.50000	1.25000
5	GDYR	2011	0.85341	1.77267	0.02785	9.28571	15.86379
6	GGRM	2011	2.24479	0.59215	0.17495	0.38805	4.86285
7	GJTL	2011	1.74928	1.60767	0.08696	0.03846	2.36035
8	IGAR	2011	5.77330	0.22367	0.18889	1.41509	1.71480
9	JECC	2011	1.11409	3.91806	0.09509	0.57895	0.71174
10	JPFA	2011	1.59107	1.18379	0.13392	0.23885	2.10728
11	KBLM	2011	0.93204	1.63114	0.06953	0.17647	0.51818
12	KLBF	2011	3.67590	0.26990	0.23472	0.62500	5.29595
13	KRAS	2011	1.43550	1.07741	0.01667	0.23077	1.28049
14	LION	2011	7.03300	0.21107	0.16106	0.29703	0.90408
15	LMSH	2011	2.33147	0.71353	0.16094	0.08811	0.83907
16	MASA	2011	0.48178	1.68041	0.05960	0.08696	1.73010
17	MBTO	2011	4.08105	0.35235	0.08662	0.25000	1.09626
18	MERK	2011	7.51518	0.18254	0.33981	0.00078	6.00580
19	MLBI	2011	0.99419	1.30226	0.55770	0.28861	14.26471
20	MRAT	2011	6.06615	0.17874	0.09826	0.26667	0.59737
21	MYOR	2011	2.21872	1.72196	0.11553	0.20602	4.50522
22	SCCO	2011	1.29096	1.80330	0.11557	0.31835	1.23713
23	SMCB	2011	1.46584	0.45478	0.15534	0.22464	2.21487
24	SMGR	2011	2.64652	0.34529	0.24882	0.49625	4.64692
25	SMSM	2011	2.52027	0.64554	0.20516	3.63095	2.22951
26	SQBI	2011	5.68585	0.19589	0.44803	0.00094	4.31604
27	TBMS	2011	0.98639	8.40311	0.02519	0.82988	4.21730
28	TCID	2011	11.74290	0.10824	0.17072	0.53009	1.51724
29	TOTO	2011	1.88269	0.76134	0.22380	0.22650	3.25669
30	TSPC	2011	2.98353	0.39543	0.13359	0.57692	3.76662
31	UNIC	2011	1.59644	0.98603	0.04731	0.60811	0.59827
32	AISA	2012	1.26947	0.90197	0.11014	0.09195	1.55396
33	AMFG	2012	3.88701	0.26793	0.14368	0.10013	1.46617
34	ARNA	2012	1.01578	0.72093	0.26991	0.38462	1.38783
35	ASII	2012	1.39907	1.02946	0.10901	0.27027	3.42497
36	AUTO	2012	1.16494	0.61923	0.53881	0.31183	2.60014

37	CPIN	2012	3.31275	0.51026	0.28009	0.28221	7.31463
38	CTBN	2012	1.78922	0.88235	0.14004	0.71463	2.55220
39	DLTA	2012	5.26462	0.24589	0.37848	0.86285	6.82603
40	DVLA	2012	4.31020	0.27704	0.18253	0.26316	2.25033
41	EKAD	2012	2.41093	0.42669	0.17407	0.11429	1.27273
42	GDYR	2012	0.89482	1.35184	0.08557	0.17460	0.98827
43	GGRM	2012	2.17022	0.56017	0.14472	0.37825	4.07145
44	GJTL	2012	1.71987	1.34920	0.10019	0.08654	1.41539
45	HMSP	2012	1.77579	0.97225	0.50864	0.58114	19.72991
46	ICBP	2012	2.71998	0.48693	0.38556	0.47449	3.79562
47	IGAR	2012	4.36351	0.29052	0.17395	0.95238	1.62338
48	INAF	2012	2.10247	0.82836	0.07021	0.07143	1.57143
49	INDF	2012	2.04885	0.73957	0.11569	0.33333	1.50463
50	INDS	2012	2.36086	0.46474	0.12787	0.27697	1.16408
51	INTP	2012	6.02763	0.17181	0.25826	0.34776	4.25592
52	IPOL	2012	0.87523	1.00558	0.05781	0.10000	0.54639
53	JECC	2012	1.15615	3.96203	0.10541	0.56604	2.01058
54	JPFA	2012	1.82455	1.30122	0.15219	0.03992	2.77527
55	KAEF	2012	2.80313	0.44037	0.13734	0.16216	2.84615
56	KBLI	2012	3.07077	0.37456	0.15567	0.25806	0.88626
57	KBLM	2012	0.97508	1.73070	0.06453	0.14286	0.56723
58	KLBF	2012	3.40540	0.27759	0.23362	0.54286	7.31034
59	MERK	2012	3.87124	0.36639	0.24909	0.00083	8.41406
60	MLBI	2012	0.58050	2.49261	0.52245	0.00070	47.26924
61	MRAT	2012	6.01712	0.18033	0.09132	0.21250	0.54324
62	MYOR	2012	2.76112	1.70629	0.13930	0.85502	4.99750
63	ROTI	2012	1.12464	0.80758	0.16549	0.25170	10.48632
64	SCCO	2012	1.46206	1.27342	0.13301	0.30266	1.27318
65	SKLT	2012	1.41477	0.92880	0.03952	0.25000	0.96257
66	SMCB	2012	1.40461	0.44553	0.16752	0.44444	2.63876
67	SMGR	2012	1.70590	0.46321	0.23257	0.44284	5.17636
68	SQBI	2012	4.85466	0.22063	0.43173	0.00098	7.49064
69	TCID	2012	7.72656	0.15021	0.16653	0.49333	2.01650
70	TOTO	2012	2.15436	0.69531	0.24525	0.20921	3.66795
71	TSPC	2012	3.09331	0.38168	0.02327	0.52448	5.00000
72	UNIC	2012	1.66970	0.77672	0.03533	0.71698	0.56738
73	UNVR	2012	0.63709	1.94233	0.56925	0.52681	40.09615
74	VOKS	2012	1.33394	1.81574	0.12793	0.28249	1.41873
75	WIIM	2012	2.06222	0.83947	0.09555	0.10811	20.54054
76	AKPI	2013	1.35543	1.02516	0.04358	0.06204	0.53501
77	ARNA	2013	1.29933	0.47724	0.28302	0.12308	1.95704
78	ASII	2013	1.24196	1.01524	0.12126	0.25939	2.59245

79	AUTO	2013	1.87377	0.32001	0.05381	0.38889	1.84065
80	CEKA	2013	1.63219	1.02475	0.08499	0.45872	0.65315
81	CPIN	2013	3.79232	0.57998	0.22760	0.29870	5.56013
82	CTBN	2013	1.78868	0.81674	0.17246	0.00384	0.24303
83	DLTA	2013	4.70537	0.28155	0.38903	0.71040	8.99408
84	DVLA	2013	4.24176	0.30103	0.14040	0.19643	2.69278
85	EKAD	2013	2.32872	0.44548	0.16405	0.12329	1.14706
86	GDYR	2013	0.93841	0.97504	0.10098	0.27422	1.43169
87	GJTL	2013	2.30881	1.68153	0.05141	0.10204	1.02252
88	HMSP	2013	1.75257	0.93601	0.53277	0.37591	19.31889
89	ICBP	2013	2.41063	0.60319	0.13034	0.48469	4.48352
90	INDF	2013	1.68310	1.04824	0.08656	0.25448	1.52955
91	INDS	2013	3.85591	0.25310	0.01112	0.12771	0.80114
92	INTP	2013	6.14807	0.15796	0.22791	0.63514	3.20410
93	JPFA	2013	2.06456	1.84403	0.12084	0.12658	1.93651
94	KLBF	2013	2.83926	0.33119	0.22274	0.39535	6.90608
95	LION	2013	6.72882	0.19910	0.14938	0.32129	1.50131
96	LMSH	2013	4.19656	0.28270	0.12735	0.01738	0.69523
97	MERK	2013	3.97947	0.36064	0.69166	0.00077	8.26519
98	MLBI	2013	0.97745	0.80465	0.87148	0.81416	25.60328
99	NIKL	2013	1.18642	1.89780	0.02482	1.00000	1.02500
100	ROTI	2013	1.13643	1.31500	0.12750	0.01923	1.31105
101	SCCO	2013	1.39417	1.49011	0.08133	0.29354	1.27833
102	SMCB	2013	0.63918	0.69783	0.12411	0.40458	1.98690
103	SMGR	2013	1.88237	0.41226	0.22643	0.41236	3.84929
104	SQBI	2013	4.96792	0.21362	0.43870	0.00096	8.96967
105	SRIL	2013	1.04919	1.41032	0.11946	0.11765	1.96000
106	TCID	2013	3.57319	0.23919	0.15409	0.46308	2.02243
107	TOTO	2013	2.19498	0.68607	0.19895	0.20921	3.68245
108	TPIA	2013	1.31404	1.23008	0.00449	0.43478	1.25210
109	TRIS	2013	2.30301	0.59050	0.12892	0.20833	1.41844
110	UNIC	2013	1.75342	0.85153	0.08388	0.45217	0.41031
111	UNVR	2013	0.67118	1.98577	0.56061	0.52849	46.59498
112	WIIM	2013	2.43000	0.57291	0.14662	0.30159	1.80108
113	AKPI	2014	1.13194	1.14988	0.04649	0.32000	0.54498
114	ASII	2014	1.32259	0.96161	0.08543	0.27788	2.49832
115	AUTO	2014	1.33186	0.29514	0.03227	0.30126	1.40751
116	BRAM	2014	1.41562	0.72570	0.07232	0.27322	1.30344
117	CPIN	2014	2.24068	0.90641	0.11498	0.16822	5.66717
118	EKAD	2014	2.32960	0.50568	0.14514	0.15000	1.31714
119	FASW	2014	0.97660	2.39337	0.04152	0.42857	2.48494
120	GJTL	2014	2.01630	1.68126	0.03320	0.11905	0.82994

121	ICBP	2014	2.18320	0.65627	0.12560	0.51270	5.07949
122	IKBI	2014	4.91745	0.22845	0.03418	0.34177	0.39574
123	INAI	2014	1.08238	5.15243	0.03400	0.50000	0.76087
124	INDF	2014	1.80744	1.08446	0.08388	0.40146	1.43770
125	INDS	2014	2.91223	0.24851	0.07994	0.28205	0.57430
126	INKP	2014	1.38112	1.70692	0.02948	0.03484	0.19090
127	INTP	2014	4.93375	0.16543	0.20685	0.96429	3.71306
128	KAEF	2014	2.38699	0.64668	0.11538	0.11628	4.54969
129	KIAS	2014	5.61100	0.11137	0.03931	0.33333	1.02083
130	KLBF	2014	3.40364	0.26560	0.21803	0.42222	8.75598
131	MERK	2014	4.58588	0.29422	0.27970	0.80237	6.47302
132	MLBI	2014	0.51391	3.02864	0.51545	0.00369	0.45465
133	SMGR	2014	2.20898	0.37245	0.20265	0.39809	3.84342
134	SMSM	2014	2.07476	0.52541	0.12294	0.08562	5.95985
135	SRIL	2014	5.32823	1.99921	0.13502	0.20690	1.06536
136	TCID	2014	1.79819	0.44389	0.13729	0.42529	2.74557
137	TKIM	2014	1.90012	1.91089	0.00809	0.04878	0.09803
138	TOTO	2014	2.10850	0.64661	0.19169	0.40404	3.19791
139	TRIS	2014	2.00182	0.69268	0.10037	0.29412	1.19865
140	TRST	2014	1.23778	0.85143	0.02327	0.21739	0.60606
141	WIIM	2014	2.27495	0.56001	0.12175	0.25926	1.53563

Lampiran 8

Tabulasi Data (Variabel Interaksi)

No	Kode Perusahaan	Tahun	CR*DPR	DER*DPR	ROA*DPR
1	ARNA	2011	0.39068	0.27728	0.06891
2	AUTO	2011	0.06934	0.02482	0.00390
3	BRAM	2011	1.14418	0.14614	0.04102
4	ESTI	2011	0.56763	0.73704	0.01172
5	GDYR	2011	7.92448	16.46051	0.25857
6	GGRM	2011	0.87109	0.22978	0.06789
7	GJTL	2011	0.06728	0.06183	0.00334
8	IGAR	2011	8.16976	0.31651	0.26730
9	JECC	2011	0.64500	2.26835	0.05505
10	JPFA	2011	0.38003	0.28275	0.03199
11	KBLM	2011	0.16448	0.28785	0.01227
12	KLBF	2011	2.29744	0.16868	0.14670
13	KRAS	2011	0.33127	0.24863	0.00385
14	LION	2011	2.08901	0.06269	0.04784
15	LMSH	2011	0.20542	0.06287	0.01418
16	MASA	2011	0.04189	0.14612	0.00518
17	MBTO	2011	1.02026	0.08809	0.02165
18	MERK	2011	0.00583	0.00014	0.00026
19	MLBI	2011	0.28693	0.37584	0.16096
20	MRAT	2011	1.61764	0.04766	0.02620
21	MYOR	2011	0.45711	0.35476	0.02380
22	SCCO	2011	0.41098	0.57408	0.03679
23	SMCB	2011	0.32928	0.10216	0.03490
24	SMGR	2011	1.31334	0.17135	0.12348
25	SMSM	2011	9.15100	2.34393	0.74491
26	SQBI	2011	0.00533	0.00018	0.00042
27	TBMS	2011	0.81858	6.97354	0.02090
28	TCID	2011	6.22475	0.05738	0.09050
29	TOTO	2011	0.42643	0.17244	0.05069
30	TSPC	2011	1.72127	0.22813	0.07707
31	UNIC	2011	0.97081	0.59961	0.02877
32	AISA	2012	0.11673	0.08294	0.01013
33	AMFG	2012	0.38919	0.02683	0.01439
34	ARNA	2012	0.39068	0.27728	0.10381
35	ASII	2012	0.37813	0.27823	0.02946
36	AUTO	2012	0.36326	0.19309	0.16802

37	CPIN	2012	0.93489	0.14400	0.07904
38	CTBN	2012	1.27862	0.63055	0.10008
39	DLTA	2012	4.54255	0.21217	0.32657
40	DVLA	2012	1.13426	0.07291	0.04803
41	EKAD	2012	0.27553	0.04877	0.01989
42	GDYR	2012	0.15624	0.23604	0.01494
43	GGRM	2012	0.82089	0.21188	0.05474
44	GJTL	2012	0.14883	0.11676	0.00867
45	HMSP	2012	1.03197	0.56501	0.29559
46	ICBP	2012	1.29060	0.23104	0.18294
47	IGAR	2012	4.15572	0.27668	0.16567
48	INAF	2012	0.15018	0.05917	0.00501
49	INDF	2012	0.68295	0.24652	0.03856
50	INDS	2012	0.65388	0.12872	0.03542
51	INTP	2012	2.09616	0.05975	0.08981
52	IPOL	2012	0.08752	0.10056	0.00578
53	JECC	2012	0.65442	2.24266	0.05966
54	JPFA	2012	0.07284	0.05194	0.00608
55	KAEF	2012	0.45456	0.07141	0.02227
56	KBLI	2012	0.79246	0.09666	0.04017
57	KBLM	2012	0.13930	0.24724	0.00922
58	KLBF	2012	1.84864	0.15069	0.12682
59	MERK	2012	0.00322	0.00030	0.00021
60	MLBI	2012	0.00040	0.00174	0.00036
61	MRAT	2012	1.27864	0.03832	0.01940
62	MYOR	2012	2.36081	1.45891	0.11911
63	ROTI	2012	0.28307	0.20327	0.04165
64	SCCO	2012	0.44251	0.38542	0.04026
65	SKLT	2012	0.35369	0.23220	0.00988
66	SMCB	2012	0.62427	0.19801	0.07445
67	SMGR	2012	0.75544	0.20513	0.10299
68	SQBI	2012	0.00478	0.00022	0.00042
69	TCID	2012	3.81177	0.07410	0.08215
70	TOTO	2012	0.45070	0.14546	0.05131
71	TSPC	2012	1.62237	0.20018	0.01220
72	UNIC	2012	1.19714	0.55690	0.02533
73	UNVR	2012	0.33563	1.02325	0.29989
74	VOKS	2012	0.37682	0.51292	0.03614
75	WIIM	2012	0.22294	0.09075	0.01033
76	AKPI	2013	0.08410	0.06360	0.00270
77	ARNA	2013	0.15992	0.05874	0.03483
78	ASII	2013	0.32215	0.26334	0.03145

79	AUTO	2013	0.72869	0.12445	0.02093
80	CEKA	2013	0.74871	0.47007	0.03899
81	CPIN	2013	1.13277	0.17324	0.06798
82	CTBN	2013	0.00688	0.00314	0.00066
83	DLTA	2013	3.34267	0.20001	0.27637
84	DVLA	2013	0.83320	0.05913	0.02758
85	EKAD	2013	0.28710	0.05492	0.02023
86	GDYR	2013	0.25733	0.26738	0.02769
87	GJTL	2013	0.23559	0.17159	0.00525
88	HMSP	2013	0.65881	0.35186	0.20027
89	ICBP	2013	1.16842	0.29236	0.06317
90	INDF	2013	0.42831	0.26676	0.02203
91	INDS	2013	0.49245	0.03232	0.00142
92	INTP	2013	3.90491	0.10033	0.14476
93	JPFA	2013	0.26134	0.23342	0.01530
94	KLBF	2013	1.12250	0.13094	0.08806
95	LION	2013	2.16187	0.06397	0.04799
96	LMSH	2013	0.07294	0.00491	0.00221
97	MERK	2013	0.00305	0.00028	0.00053
98	MLBI	2013	0.79581	0.65511	0.70953
99	NIKL	2013	1.18642	1.89780	0.02482
100	ROTI	2013	0.02185	0.02529	0.00245
101	SCCO	2013	0.40925	0.43741	0.02387
102	SMCB	2013	0.25860	0.28233	0.05021
103	SMGR	2013	0.77622	0.17000	0.09337
104	SQBI	2013	0.00476	0.00020	0.00042
105	SRIL	2013	0.12343	0.16592	0.01405
106	TCID	2013	1.65467	0.11076	0.07136
107	TOTO	2013	0.45920	0.14353	0.04162
108	TPIA	2013	0.57132	0.53482	0.00195
109	TRIS	2013	0.47979	0.12302	0.02686
110	UNIC	2013	0.79285	0.38504	0.03793
111	UNVR	2013	0.35471	1.04946	0.29628
112	WIIM	2013	0.73286	0.17278	0.04422
113	AKPI	2014	0.36222	0.36796	0.01488
114	ASII	2014	0.36752	0.26721	0.02374
115	AUTO	2014	0.40123	0.08891	0.00972
116	BRAM	2014	0.38678	0.19828	0.01976
117	CPIN	2014	0.37694	0.15248	0.01934
118	EKAD	2014	0.34944	0.07585	0.02177
119	FASW	2014	0.41854	1.02573	0.01779
120	GJTL	2014	0.24004	0.20015	0.00395

121	ICBP	2014	1.11933	0.33647	0.06439
122	IKBI	2014	1.68065	0.07808	0.01168
123	INAI	2014	0.54119	2.57621	0.01700
124	INDF	2014	0.72561	0.43537	0.03368
125	INDS	2014	0.82140	0.07009	0.02255
126	INKP	2014	0.04812	0.05947	0.00103
127	INTP	2014	4.75754	0.15952	0.19947
128	KAEF	2014	0.27756	0.07519	0.01342
129	KIAS	2014	1.87033	0.03712	0.01310
130	KLBF	2014	1.43709	0.11214	0.09206
131	MERK	2014	3.67957	0.23608	0.22443
132	MLBI	2014	0.00190	0.01117	0.00190
133	SMGR	2014	0.87937	0.14827	0.08067
134	SMSM	2014	0.17763	0.04498	0.01053
135	SRIL	2014	1.10239	0.41363	0.02794
136	TCID	2014	0.76475	0.18878	0.05839
137	TKIM	2014	0.09269	0.09321	0.00039
138	TOTO	2014	0.85192	0.26125	0.07745
139	TRIS	2014	0.58877	0.20373	0.02952
140	TRST	2014	0.26908	0.18509	0.00506
141	WIIM	2014	0.58980	0.14519	0.03157

Lampiran 9

Tabulasi Data Ln

No	Kode Perusahaan	Tahun	LN_CR	LN_DER	LN_ROA	LN_DPR	LN_PBV
1	ARNA	2011	0.01565	-0.32721	-1.71948	-0.95551	0.32774
2	AUTO	2011	0.28199	-0.74535	-2.59558	-2.95073	-0.58844
3	BRAM	2011	1.02669	-1.03119	-2.30174	-0.89200	1.29141
4	ESTI	2011	0.12687	0.38804	-3.75342	-0.69315	0.22314
5	GDYR	2011	-0.15852	0.57249	-3.58108	2.22848	2.76404
6	GGRM	2011	0.80861	-0.52400	-1.74324	-0.94663	1.58163
7	GJTL	2011	0.55921	0.47479	-2.44230	-3.25810	0.85881
8	IGAR	2011	1.75324	-1.49760	-1.66660	0.34720	0.53930
9	JECC	2011	0.10804	1.36560	-2.35298	-0.54654	-0.34004
10	JPFA	2011	0.46441	0.16872	-2.01054	-1.43190	0.74540
11	KBLM	2011	-0.07038	0.48928	-2.66606	-1.73460	-0.65743
12	KLBF	2011	1.30180	-1.30972	-1.44934	-0.47000	1.66694
13	KRAS	2011	0.36152	0.07456	-4.09422	-1.46634	0.24724
14	LION	2011	1.95061	-1.55558	-1.82598	-1.21392	-0.10084
15	LMSH	2011	0.84650	-0.33753	-1.82673	-2.42922	-0.17546
16	MASA	2011	-0.73026	0.51904	-2.82015	-2.44235	0.54818
17	MBTO	2011	1.40635	-1.04312	-2.44624	-1.38629	0.09190
18	MERK	2011	2.01693	-1.70080	-1.07936	-7.16240	1.79273
19	MLBI	2011	-0.00583	0.26410	-0.58393	-1.24268	2.65779
20	MRAT	2011	1.80272	-1.72185	-2.32017	-1.32176	-0.51522
21	MYOR	2011	0.79693	0.54346	-2.15820	-1.57977	1.50524
22	SCCO	2011	0.25538	0.58962	-2.15787	-1.14460	0.21280
23	SMCB	2011	0.38243	-0.78794	-1.86214	-1.49327	0.79519
24	SMGR	2011	0.97324	-1.06336	-1.39104	-0.70067	1.53620
25	SMSM	2011	0.92437	-0.43766	-1.58399	1.28949	0.80178
26	SQBI	2011	1.73798	-1.63021	-0.80289	-6.97158	1.46234
27	TBMS	2011	-0.01371	2.12860	-3.68141	-0.18648	1.43919
28	TCID	2011	2.46325	-2.22338	-1.76771	-0.63472	0.41689
29	TOTO	2011	0.63270	-0.27268	-1.49700	-1.48501	1.18071
30	TSPC	2011	1.09311	-0.92779	-2.01301	-0.55005	1.32618
31	UNIC	2011	0.46778	-0.01407	-3.05109	-0.49740	-0.51372
32	AISA	2012	0.23860	-0.10317	-2.20603	-2.38647	0.44080
33	AMFG	2012	1.35764	-1.31702	-1.94017	-2.30133	0.38265
34	ARNA	2012	0.01565	-0.32721	-1.30966	-0.95551	0.32774
35	ASII	2012	0.33581	0.02904	-2.21630	-1.30833	1.23109
36	AUTO	2012	0.15267	-0.47928	-0.61839	-1.16530	0.95557
37	CPIN	2012	1.19778	-0.67283	-1.27266	-1.26511	1.98988
38	CTBN	2012	0.58178	-0.12517	-1.96583	-0.33599	0.93696

39	DLTA	2012	1.66101	-1.40287	-0.97158	-0.14752	1.92074
40	DVLA	2012	1.46098	-1.28358	-1.70083	-1.33500	0.81108
41	EKAD	2012	0.88001	-0.85169	-1.74831	-2.16905	0.24116
42	GDYR	2012	-0.11114	0.30147	-2.45843	-1.74524	-0.01180
43	GGRM	2012	0.77483	-0.57952	-1.93296	-0.97220	1.40400
44	GJTL	2012	0.54225	0.29951	-2.30069	-2.44717	0.34741
45	HMSP	2012	0.57425	-0.02814	-0.67602	-0.54277	2.98214
46	ICBP	2012	1.00062	-0.71964	-0.95306	-0.74552	1.33385
47	IGAR	2012	1.47328	-1.23609	-1.74899	-0.04879	0.48451
48	INAF	2012	0.74311	-0.18831	-2.65631	-2.63906	0.45199
49	INDF	2012	0.71728	-0.30168	-2.15687	-1.09861	0.40855
50	INDS	2012	0.85903	-0.76629	-2.05676	-1.28385	0.15193
51	INTP	2012	1.79635	-1.76134	-1.35379	-1.05625	1.44831
52	IPOL	2012	-0.13326	0.00556	-2.85054	-2.30259	-0.60442
53	JECC	2012	0.14510	1.37676	-2.24992	-0.56909	0.69842
54	JPFA	2012	0.60133	0.26330	-1.88261	-3.22087	1.02075
55	KAEF	2012	1.03074	-0.82013	-1.98533	-1.81916	1.04597
56	KBLI	2012	1.12193	-0.98200	-1.86004	-1.35455	-0.12075
57	KBLM	2012	-0.02524	0.54852	-2.74068	-1.94591	-0.56700
58	KLBF	2012	1.22536	-1.28160	-1.45405	-0.61091	1.98929
59	MERK	2012	1.35357	-1.00406	-1.38994	-7.09278	2.12990
60	MLBI	2012	-0.54387	0.91333	-0.64923	-7.26864	3.85586
61	MRAT	2012	1.79461	-1.71298	-2.39343	-1.54881	-0.61021
62	MYOR	2012	1.01564	0.53432	-1.97111	-0.15663	1.60894
63	ROTI	2012	0.11746	-0.21372	-1.79886	-1.37951	2.35007
64	SCCO	2012	0.37985	0.24171	-2.01734	-1.19513	0.24152
65	SKLT	2012	0.34697	-0.07386	-3.23094	-1.38629	-0.03815
66	SMCB	2012	0.33976	-0.80850	-1.78666	-0.81093	0.97031
67	SMGR	2012	0.53409	-0.76956	-1.45856	-0.81455	1.64410
68	SQBI	2012	1.57994	-1.51125	-0.83997	-6.92363	2.01365
69	TCID	2012	2.04466	-1.89574	-1.79260	-0.70657	0.70136
70	TOTO	2012	0.76749	-0.36340	-1.40548	-1.56444	1.29963
71	TSPC	2012	1.12924	-0.96318	-3.76061	-0.64536	1.60944
72	UNIC	2012	0.51264	-0.25267	-3.34316	-0.33271	-0.56673
73	UNVR	2012	-0.45084	0.66389	-0.56343	-0.64091	3.69128
74	VOKS	2012	0.28813	0.59649	-2.05624	-1.26413	0.34976
75	WIIM	2012	0.72378	-0.17499	-2.34816	-2.22462	3.02240
76	AKPI	2013	0.30412	0.02485	-3.13326	-2.77991	-0.62548
77	ARNA	2013	0.26185	-0.73973	-1.26224	-2.09495	0.67143
78	ASII	2013	0.21669	0.01512	-2.10981	-1.34944	0.95260
79	AUTO	2013	0.62795	-1.13939	-2.92231	-0.94446	0.61012
80	CEKA	2013	0.48992	0.02445	-2.46520	-0.77932	-0.42594
81	CPIN	2013	1.33298	-0.54477	-1.48019	-1.20831	1.71562
82	CTBN	2013	0.58148	-0.20244	-1.75757	-5.56111	-1.41456

83	DLTA	2013	1.54870	-1.26746	-0.94410	-0.34193	2.19657
84	DVLA	2013	1.44498	-1.20055	-1.96329	-1.62746	0.99057
85	EKAD	2013	0.84532	-0.80860	-1.80760	-2.09323	0.13720
86	GDYR	2013	-0.06357	-0.02528	-2.29278	-1.29381	0.35886
87	GJTL	2013	0.83673	0.51971	-2.96791	-2.28238	0.02227
88	HMSP	2013	0.56109	-0.06613	-0.62967	-0.97840	2.96108
89	ICBP	2013	0.87989	-0.50553	-2.03764	-0.72424	1.50041
90	INDF	2013	0.52064	0.04711	-2.44693	-1.36853	0.42497
91	INDS	2013	1.34961	-1.37396	-4.49898	-2.05796	-0.22172
92	INTP	2013	1.81614	-1.84541	-1.47880	-0.45390	1.16443
93	JPFA	2013	0.72492	0.61196	-2.11329	-2.06686	0.66089
94	KLBF	2013	1.04354	-1.10506	-1.50177	-0.92799	1.93240
95	LION	2013	1.90640	-1.61393	-1.90128	-1.13543	0.40634
96	LMSH	2013	1.43426	-1.26338	-2.06083	-4.05239	-0.36351
97	MERK	2013	1.38115	-1.01987	-0.36867	-7.17421	2.11205
98	MLBI	2013	-0.02280	-0.21735	-0.13756	-0.20559	3.24272
99	NIKL	2013	0.17094	0.64070	-3.69613	0.00000	0.02469
100	ROTI	2013	0.12789	0.27384	-2.05965	-3.95124	0.27083
101	SCCO	2013	0.33230	0.39885	-2.50928	-1.22573	0.24555
102	SMCB	2013	-0.44756	-0.35978	-2.08656	-0.90491	0.68658
103	SMGR	2013	0.63253	-0.88610	-1.48533	-0.88586	1.34789
104	SQBI	2013	1.60300	-1.54357	-0.82394	-6.94986	2.19385
105	SRIL	2013	0.04802	0.34382	-2.12478	-2.14007	0.67294
106	TCID	2013	1.27346	-1.43049	-1.87022	-0.76986	0.70430
107	TOTO	2013	0.78618	-0.37678	-1.61468	-1.56444	1.30358
108	TPIA	2013	0.27311	0.20708	-5.40525	-0.83291	0.22483
109	TRIS	2013	0.83422	-0.52678	-2.04860	-1.56862	0.34956
110	UNIC	2013	0.56157	-0.16072	-2.47842	-0.79369	-0.89084
111	UNVR	2013	-0.39872	0.68601	-0.57872	-0.63773	3.84149
112	WIIM	2013	0.88789	-0.55702	-1.91989	-1.19870	0.58838
113	AKPI	2014	0.12393	0.13965	-3.06858	-1.13943	-0.60701
114	ASII	2014	0.27959	-0.03914	-2.46011	-1.28057	0.91562
115	AUTO	2014	0.28658	-1.22031	-3.43376	-1.19980	0.34182
116	BRAM	2014	0.34757	-0.32061	-2.62659	-1.29746	0.26501
117	CPIN	2014	0.80678	-0.09826	-2.16298	-1.78246	1.73469
118	EKAD	2014	0.84570	-0.68186	-1.93004	-1.89712	0.27546
119	FASW	2014	-0.02368	0.87270	-3.18155	-0.84730	0.91025
120	GJTL	2014	0.70127	0.51954	-3.40520	-2.12823	-0.18641
121	ICBP	2014	0.78079	-0.42118	-2.07466	-0.66806	1.62521
122	IKBI	2014	1.59279	-1.47643	-3.37599	-1.07361	-0.92700
123	INAI	2014	0.07916	1.63947	-3.38151	-0.69315	-0.27329
124	INDF	2014	0.59191	0.08108	-2.47834	-0.91265	0.36304
125	INDS	2014	1.06892	-1.39229	-2.52654	-1.26567	-0.55460
126	INKP	2014	0.32290	0.53469	-3.52410	-3.35690	-1.65599

127	INTP	2014	1.59610	-1.79920	-1.57574	-0.03637	1.31186
128	KAEF	2014	0.87003	-0.43591	-2.15949	-2.15176	1.51506
129	KIAS	2014	1.72473	-2.19490	-3.23622	-1.09861	0.02062
130	KLBF	2014	1.22484	-1.32575	-1.52312	-0.86222	2.16974
131	MERK	2014	1.52298	-1.22342	-1.27402	-0.22019	1.86764
132	MLBI	2014	-0.66572	1.10812	-0.66272	-5.60223	-0.78823
133	SMGR	2014	0.79253	-0.98765	-1.59629	-0.92108	1.34636
134	SMSM	2014	0.72984	-0.64358	-2.09606	-2.45788	1.78505
135	SRIL	2014	1.67302	0.69275	-2.00232	-1.57554	0.06331
136	TCID	2014	0.58678	-0.81218	-1.98567	-0.85499	1.00999
137	TKIM	2014	0.64192	0.64757	-4.81756	-3.02042	-2.32250
138	TOTO	2014	0.74597	-0.43602	-1.65188	-0.90624	1.16250
139	TRIS	2014	0.69406	-0.36719	-2.29885	-1.22378	0.18120
140	TRST	2014	0.21332	-0.16084	-3.76054	-1.52606	-0.50078
141	WIIM	2014	0.82196	-0.57981	-2.10575	-1.34993	0.42894

Lampiran 10

Tabulasi Data Ln (Variabel Interaksi)

No	Kode Perusahaan	Tahun	LN_CR*DPR	LN_DER*DPR	LN_ROA*DPR
1	ARNA	2011	-0.93986	-1.28272	-2.67499
2	AUTO	2011	-2.66874	-3.69609	-5.54632
3	BRAM	2011	0.13469	-1.92319	-3.19374
4	ESTI	2011	-0.56628	-0.30511	-4.44657
5	GDYR	2011	2.06996	2.80096	-1.35261
6	GGRM	2011	-0.13801	-1.47063	-2.68987
7	GJTL	2011	-2.69889	-2.78331	-5.70040
8	IGAR	2011	2.10044	-1.15041	-1.31940
9	JECC	2011	-0.43851	0.81905	-2.89953
10	JPFA	2011	-0.96750	-1.26318	-3.44245
11	KBLM	2011	-1.80498	-1.24532	-4.40066
12	KLBF	2011	0.83179	-1.77973	-1.91935
13	KRAS	2011	-1.10482	-1.39178	-5.56056
14	LION	2011	0.73669	-2.76950	-3.03991
15	LMSH	2011	-1.58272	-2.76675	-4.25595
16	MASA	2011	-3.17261	-1.92331	-5.26250
17	MBTO	2011	0.02006	-2.42942	-3.83254
18	MERK	2011	-5.14547	-8.86319	-8.24176
19	MLBI	2011	-1.24851	-0.97858	-1.82661
20	MRAT	2011	0.48097	-3.04360	-3.64192
21	MYOR	2011	-0.78284	-1.03631	-3.73797
22	SCCO	2011	-0.88921	-0.55498	-3.30247
23	SMCB	2011	-1.11084	-2.28121	-3.35541
24	SMGR	2011	0.27257	-1.76403	-2.09171
25	SMSM	2011	2.21386	0.85183	-0.29449
26	SQBI	2011	-5.23360	-8.60180	-7.77448
27	TBMS	2011	-0.20018	1.94212	-3.86789
28	TCID	2011	1.82853	-2.85810	-2.40243
29	TOTO	2011	-0.85231	-1.75769	-2.98200
30	TSPC	2011	0.54306	-1.47784	-2.56306
31	UNIC	2011	-0.02963	-0.51147	-3.54849
32	AISA	2012	-2.14787	-2.48964	-4.59249
33	AMFG	2012	-0.94369	-3.61836	-4.24151
34	ARNA	2012	-0.93986	-1.28272	-2.26517
35	ASII	2012	-0.97252	-1.27930	-3.52463
36	AUTO	2012	-1.01264	-1.64458	-1.78369

37	CPIN	2012	-0.06733	-1.93793	-2.53777
38	CTBN	2012	0.24579	-0.46116	-2.30182
39	DLTA	2012	1.51349	-1.55039	-1.11910
40	DVLA	2012	0.12598	-2.61858	-3.03583
41	EKAD	2012	-1.28904	-3.02074	-3.91736
42	GDYR	2012	-1.85638	-1.44377	-4.20367
43	GGRM	2012	-0.19737	-1.55172	-2.90516
44	GJTL	2012	-1.90492	-2.14766	-4.74785
45	HMSP	2012	0.03147	-0.57091	-1.21879
46	ICBP	2012	0.25511	-1.46515	-1.69858
47	IGAR	2012	1.42449	-1.28488	-1.79778
48	INAF	2012	-1.89594	-2.82737	-5.29536
49	INDF	2012	-0.38133	-1.40030	-3.25548
50	INDS	2012	-0.42483	-2.05014	-3.34061
51	INTP	2012	0.74011	-2.81759	-2.41004
52	IPOL	2012	-2.43585	-2.29702	-5.15312
53	JECC	2012	-0.42400	0.80766	-2.81902
54	JPFA	2012	-2.61954	-2.95757	-5.10348
55	KAEF	2012	-0.78842	-2.63929	-3.80448
56	KBLI	2012	-0.23262	-2.33655	-3.21459
57	KBLM	2012	-1.97115	-1.39739	-4.68659
58	KLBF	2012	0.61445	-1.89251	-2.06496
59	MERK	2012	-5.73921	-8.09685	-8.48272
60	MLBI	2012	-7.81251	-6.35531	-7.91787
61	MRAT	2012	0.24580	-3.26179	-3.94224
62	MYOR	2012	0.85901	0.37769	-2.12774
63	ROTI	2012	-1.26205	-1.59323	-3.17838
64	SCCO	2012	-0.81529	-0.95342	-3.21248
65	SKLT	2012	-1.03933	-1.46015	-4.61724
66	SMCB	2012	-0.47117	-1.61943	-2.59759
67	SMGR	2012	-0.28046	-1.58411	-2.27311
68	SQBI	2012	-5.34369	-8.43488	-7.76360
69	TCID	2012	1.33809	-2.60231	-2.49917
70	TOTO	2012	-0.79695	-1.92784	-2.96992
71	TSPC	2012	0.48389	-1.60853	-4.40597
72	UNIC	2012	0.17994	-0.58538	-3.67586
73	UNVR	2012	-1.09175	0.02298	-1.20434
74	VOKS	2012	-0.97599	-0.66763	-3.32037
75	WIIM	2012	-1.50084	-2.39961	-4.57278
76	AKPI	2013	-2.47579	-2.75507	-5.91318
77	ARNA	2013	-1.83310	-2.83468	-3.35718
78	ASII	2013	-1.13275	-1.33432	-3.45925

79	AUTO	2013	-0.31651	-2.08386	-3.86677
80	CEKA	2013	-0.28940	-0.75487	-3.24452
81	CPIN	2013	0.12467	-1.75308	-2.68850
82	CTBN	2013	-4.97963	-5.76355	-7.31867
83	DLTA	2013	1.20677	-1.60939	-1.28603
84	DVLA	2013	-0.18248	-2.82801	-3.59074
85	EKAD	2013	-1.24792	-2.90184	-3.90083
86	GDYR	2013	-1.35738	-1.31910	-3.58660
87	GJTL	2013	-1.44565	-1.76268	-5.25029
88	HMSP	2013	-0.41731	-1.04452	-1.60807
89	ICBP	2013	0.15565	-1.22976	-2.76187
90	INDF	2013	-0.84790	-1.32142	-3.81546
91	INDS	2013	-0.70836	-3.43193	-6.55694
92	INTP	2013	1.36224	-2.29932	-1.93270
93	JPFA	2013	-1.34195	-1.45491	-4.18015
94	KLBF	2013	0.11556	-2.03305	-2.42975
95	LION	2013	0.77097	-2.74936	-3.03670
96	LMSH	2013	-2.61813	-5.31577	-6.11322
97	MERK	2013	-5.79306	-8.19408	-7.54288
98	MLBI	2013	-0.22840	-0.42295	-0.34316
99	NIKL	2013	0.17094	0.64070	-3.69613
100	ROTI	2013	-3.82335	-3.67741	-6.01089
101	SCCO	2013	-0.89344	-0.82688	-3.73502
102	SMCB	2013	-1.35247	-1.26468	-2.99146
103	SMGR	2013	-0.25332	-1.77196	-2.37118
104	SQBI	2013	-5.34686	-8.49343	-7.77379
105	SRIL	2013	-2.09205	-1.79625	-4.26484
106	TCID	2013	0.50360	-2.20035	-2.64007
107	TOTO	2013	-0.77827	-1.94122	-3.17913
108	TPIA	2013	-0.55980	-0.62583	-6.23816
109	TRIS	2013	-0.73440	-2.09539	-3.61722
110	UNIC	2013	-0.23212	-0.95441	-3.27211
111	UNVR	2013	-1.03645	0.04828	-1.21645
112	WIIM	2013	-0.31080	-1.75571	-3.11859
113	AKPI	2014	-1.01550	-0.99978	-4.20801
114	ASII	2014	-1.00097	-1.31971	-3.74067
115	AUTO	2014	-0.91322	-2.42011	-4.63355
116	BRAM	2014	-0.94989	-1.61808	-3.92405
117	CPIN	2014	-0.97568	-1.88072	-3.94544
118	EKAD	2014	-1.05142	-2.57898	-3.82716
119	FASW	2014	-0.87098	0.02540	-4.02884
120	GJTL	2014	-1.42697	-1.60869	-5.53343

121	ICBP	2014	0.11273	-1.08924	-2.74272
122	IKBI	2014	0.51918	-2.55004	-4.44960
123	INAI	2014	-0.61399	0.94632	-4.07466
124	INDF	2014	-0.32074	-0.83157	-3.39099
125	INDS	2014	-0.19675	-2.65796	-3.79221
126	INKP	2014	-3.03400	-2.82221	-6.88100
127	INTP	2014	1.55973	-1.83557	-1.61211
128	KAEF	2014	-1.28173	-2.58767	-4.31125
129	KIAS	2014	0.62612	-3.29352	-4.33483
130	KLBF	2014	0.36262	-2.18797	-2.38534
131	MERK	2014	1.30280	-1.44360	-1.49421
132	MLBI	2014	-6.26794	-4.49411	-6.26495
133	SMGR	2014	-0.12855	-1.90873	-2.51737
134	SMSM	2014	-1.72803	-3.10146	-4.55394
135	SRIL	2014	0.09748	-0.88278	-3.57786
136	TCID	2014	-0.26821	-1.66718	-2.84066
137	TKIM	2014	-2.37851	-2.37285	-7.83798
138	TOTO	2014	-0.16027	-1.34226	-2.55812
139	TRIS	2014	-0.52972	-1.59097	-3.52263
140	TRST	2014	-1.31274	-1.68689	-5.28660
141	WIIM	2014	-0.52797	-1.92973	-3.45567

Lampiran 11

Statistik Deskriptif

Descriptive Statistics

	N	Minimum	Maximum	Mean	Std. Deviation
Likuiditas	141	.48178	11.74290	2.5475828	1.78533517
Leverage	141	.10824	8.40311	.9431776	1.00127532
Profitabilitas	141	.00449	.87148	.1716233	.14803141
Kebijakan Dividen	141	.00070	9.28571	.4131340	.83788310
Nilai Perusahaan	141	.09803	47.26924	4.2549399	7.24553204
Valid N (listwise)	141				

Lampiran 12
 Uji Normalitas

One-Sample Kolmogorov-Smirnov Test

		Unstandardized Residual
N		141
Normal Parameters ^a	Mean	.0000000
	Std. Deviation	5.19503614
Most Extreme Differences	Absolute	.216
	Positive	.216
	Negative	-.179
Kolmogorov-Smirnov Z		2.562
Asymp. Sig. (2-tailed)		.000

a. Test distribution is Normal.

Lampiran 13
 Uji Normalitas Data Ln

One-Sample Kolmogorov-Smirnov Test

		Unstandardized Residual
N		141
Normal Parameters ^a	Mean	.0000000
	Std. Deviation	.83823525
Most Extreme Differences	Absolute	.053
	Positive	.053
	Negative	-.050
Kolmogorov-Smirnov Z		.628
Asymp. Sig. (2-tailed)		.825

a. Test distribution is Normal.

Lampiran 14

Uji Heteroskedastisitas Data Ln

Coefficients^a

Model	Unstandardized Coefficients		Standardized Coefficients	t	Sig.	Collinearity Statistics	
	B	Std. Error	Beta			Tolerance	VIF
1 (Constant)	.315	.150		2.095	.038		
Likuiditas	.097	.076	.142	1.287	.200	.569	1.758
Leverage	.076	.059	.133	1.274	.205	.638	1.568
Profitabilitas	-.092	.049	-.175	-1.867	.064	.790	1.267
Kebijakan Dividen	-.046	.025	-.157	-1.840	.068	.955	1.047

a. Dependent Variable: absresidual

Lampiran 15

Uji Multikolinearitas Data Ln

Coefficients^a

Model	Unstandardized Coefficients		Standardized Coefficients	t	Sig.	Collinearity Statistics	
	B	Std. Error	Beta			Tolerance	VIF
(Constant)	1.967	.259		7.597	.000		
Likuiditas	.581	.130	.375	4.455	.000	.569	1.758
Leverage	.390	.102	.302	3.807	.000	.638	1.568
Profitabilitas	.651	.085	.545	7.638	.000	.790	1.267
Kebijakan Dividen	.095	.043	.142	2.191	.030	.955	1.047

a. Dependent Variable: Nilai Perusahaan

Lampiran 16

Uji Autokorelasi

Model Summary^b

Model	R	R Square	Adjusted R Square	Std. Error of the Estimate	Durbin-Watson
1	.673 ^a	.453	.437	.80215306	2.204

a. Predictors: (Constant), Kebijakan Dividen, Leverage, Profitabilitas, Likuiditas

b. Dependent Variable: Nilai Perusahaan

Lampiran 17

Hasil Regresi Setelah Perbaikan Hipotesis 1 dan Hipotesis 2

Model Summary

Model	R	R Square	Adjusted R Square	Std. Error of the Estimate
1	.645 ^a	.416	.403	.82591069

a. Predictors: (Constant), Likuiditas*Kebijakan Dividen, Likuiditas, Kebijakan Dividen

ANOVA^b

Model		Sum of Squares	df	Mean Square	F	Sig.
1	Regression	66.562	3	22.187	32.527	.000 ^a
	Residual	93.452	137	.682		
	Total	160.013	140			

a. Predictors: (Constant), Likuiditas*Kebijakan Dividen, Likuiditas, Kebijakan Dividen

b. Dependent Variable: Nilai Perusahaan

Coefficients^a

Model		Unstandardized Coefficients		Standardized Coefficients	t	Sig.
		B	Std. Error	Beta		
1	(Constant)	.494	.129		3.818	.000
	Likuiditas	.590	.102	.380	5.763	.000
	Kebijakan Dividen	.053	.047	.085	1.142	.255
	Likuiditas*Kebijakan Dividen	.225	.037	.453	6.143	.000

a. Dependent Variable: Nilai Perusahaan

Lampiran 18

Hasil Regresi Setelah Perbaikan Hipotesis 3 dan Hipotesis 4

Model Summary

Model	R	R Square	Adjusted R Square	Std. Error of the Estimate
1	.521 ^a	.271	.255	.92278045

a. Predictors: (Constant), Leverage*Kebijakan Dividen, Kebijakan Dividen, Leverage

ANOVA^b

Model		Sum of Squares	df	Mean Square	F	Sig.
1	Regression	43.355	3	14.452	16.971	.000 ^a
	Residual	116.659	137	.852		
	Total	160.013	140			

a. Predictors: (Constant), Leverage*Kebijakan Dividen, Kebijakan Dividen, Leverage

b. Dependent Variable: Nilai Perusahaan

Coefficients^a

Model		Unstandardized Coefficients		Standardized Coefficients	t	Sig.
		B	Std. Error	Beta		
1	(Constant)	1.200	.111		10.850	.000
	Leverage	.241	.112	.188	2.164	.032
	Kebijakan Dividen	.365	.054	.582	6.823	.000
	Leverage*Kebijakan Dividen	.233	.045	.515	5.233	.000

a. Dependent Variable: Nilai Perusahaan

Lampiran 19

Hasil Regresi Setelah Perbaikan Hipotesis 5 dan Hipotesis 6

Model Summary

Model	R	R Square	Adjusted R Square	Std. Error of the Estimate
1	.752 ^a	.565	.555	.71289548

a. Predictors: (Constant), Profitabilitas*Kebijakan Dividen, Kebijakan Dividen, Profitabilitas

ANOVA^b

Model		Sum of Squares	df	Mean Square	F	Sig.
1	Regression	90.387	3	30.129	59.284	.000 ^a
	Residual	69.626	137	.508		
	Total	160.013	140			

a. Predictors: (Constant), Profitabilitas*Kebijakan Dividen, Kebijakan Dividen, Profitabilitas

b. Dependent Variable: Nilai Perusahaan

Coefficients^a

Model		Unstandardized Coefficients		Standardized Coefficients	t	Sig.
		B	Std. Error	Beta		
1	(Constant)	1.969	.181		10.856	.000
	Profitabilitas	.609	.069	.510	8.888	.000
	Kebijakan Dividen	.227	.036	.362	6.375	.000
	Profitabilitas*Kebijakan Dividen	.095	.016	.348	6.030	.000

a. Dependent Variable: Nilai Perusahaan

Lampiran 20
 Hasil Regresi Hipotesis 1 dan Hipotesis 2 Sebelum Perbaikan

Model Summary

Model	R	R Square	Adjusted R Square	Std. Error of the Estimate
1	.576 ^a	.332	.317	4.90186628

a. Predictors: (Constant), Likuiditas*Kebijakan Dividen, Likuiditas, Kebijakan Dividen

ANOVA^b

Model		Sum of Squares	df	Mean Square	F	Sig.
1	Regression	1635.618	3	545.206	22.690	.000 ^a
	Residual	3291.876	137	24.028		
	Total	4927.494	140			

a. Predictors: (Constant), Likuiditas*Kebijakan Dividen, Likuiditas, Kebijakan Dividen

b. Dependent Variable: Nilai Perusahaan

Coefficients^a

Model		Unstandardized Coefficients		Standardized Coefficients	t	Sig.
		B	Std. Error	Beta		
1	(Constant)	1.732	.707		2.451	.015
	Likuiditas	3.115	.603	.362	5.167	.000
	Kebijakan Dividen	.711	.504	.100	1.411	.161
	Likuiditas*Kebijakan Dividen	1.128	.196	.410	5.763	.000

a. Dependent Variable: Nilai Perusahaan

Lampiran 21

Hasil Regresi Hipotesis 3 dan Hipotesis 4 Sebelum Perbaikan

Model Summary

Model	R	R Square	Adjusted R Square	Std. Error of the Estimate
1	.424 ^a	.180	.162	6.63351363

a. Predictors: (Constant), Leverage*Kebijakan Dividen, Leverage, Kebijakan Dividen

ANOVA^b

Model		Sum of Squares	df	Mean Square	F	Sig.
1	Regression	1321.203	3	440.401	10.008	.000 ^a
	Residual	6028.480	137	44.004		
	Total	7349.683	140			

a. Predictors: (Constant), Leverage*Kebijakan Dividen, Leverage, Kebijakan Dividen

b. Dependent Variable: Nilai Perusahaan

Coefficients^a

Model		Unstandardized Coefficients		Standardized Coefficients	t	Sig.
		B	Std. Error	Beta		
1	(Constant)	5.676	.951		5.965	.000
	Leverage	1.032	.622	.143	1.660	.099
	Kebijakan Dividen	1.987	.376	.467	5.289	.000
	Leverage*Kebijakan Dividen	.605	.297	.197	2.038	.043

a. Dependent Variable: Nilai Perusahaan

Lampiran 22

Hasil Regresi Hipotesis 5 dan Hipotesis 6 Sebelum Perbaikan

Model Summary

Model	R	R Square	Adjusted R Square	Std. Error of the Estimate
1	.635 ^a	.403	.390	4.63453508

a. Predictors: (Constant), Profitabilitas*Kebijakan Dividen, Kebijakan Dividen, Profitabilitas

ANOVA^b

Model		Sum of Squares	df	Mean Square	F	Sig.
1	Regression	1984.883	3	661.628	30.804	.000 ^a
	Residual	2942.611	137	21.479		
	Total	4927.494	140			

a. Predictors: (Constant), Profitabilitas*Kebijakan Dividen, Kebijakan Dividen, Profitabilitas

b. Dependent Variable: Nilai Perusahaan

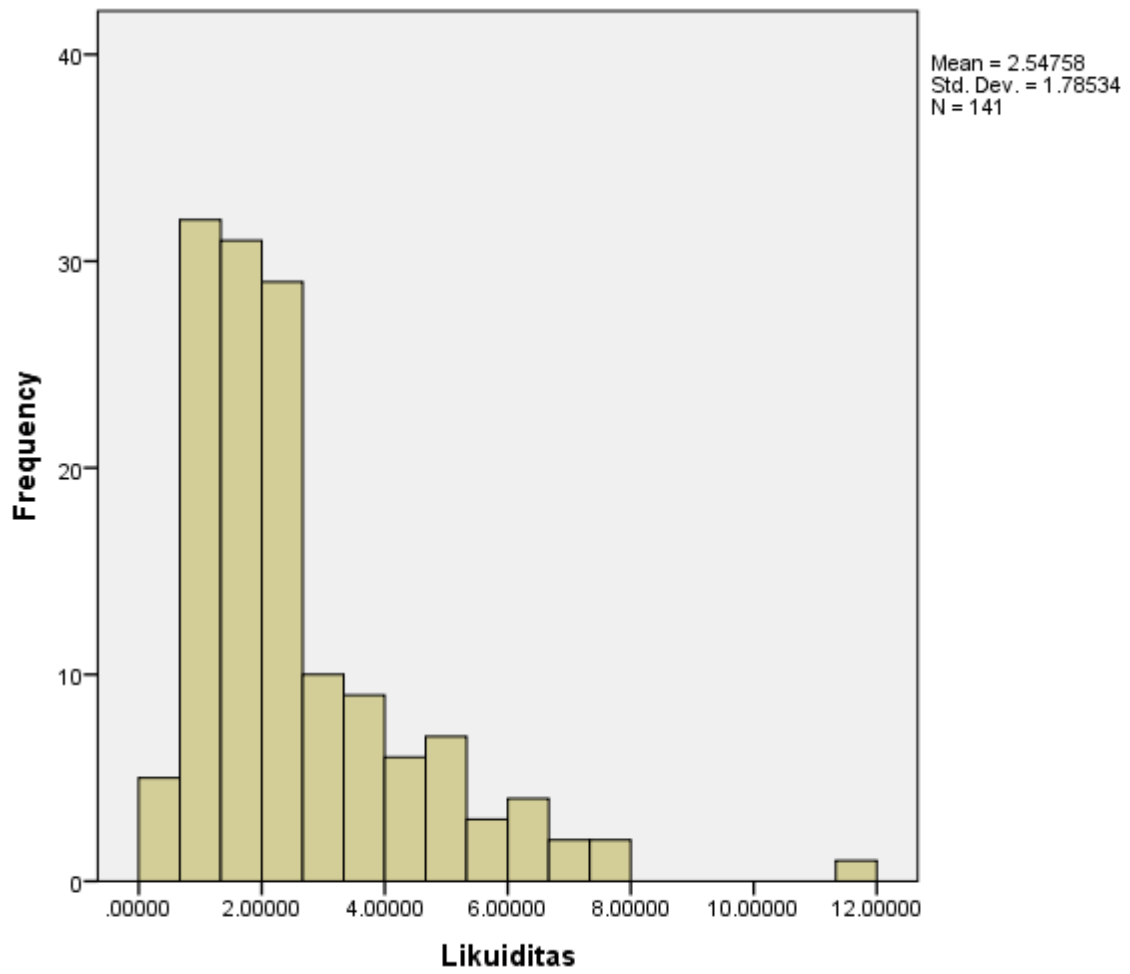
Coefficients^a

Model		Unstandardized Coefficients		Standardized Coefficients	t	Sig.
		B	Std. Error	Beta		
1	(Constant)	4.827	1.163		4.150	.000
	Profitabilitas	2.131	.446	.322	4.772	.000
	Kebijakan Dividen	1.313	.470	.185	2.795	.006
	Profitabilitas*Kebijakan Dividen	.716	.102	.472	7.038	.000

a. Dependent Variable: Nilai Perusahaan

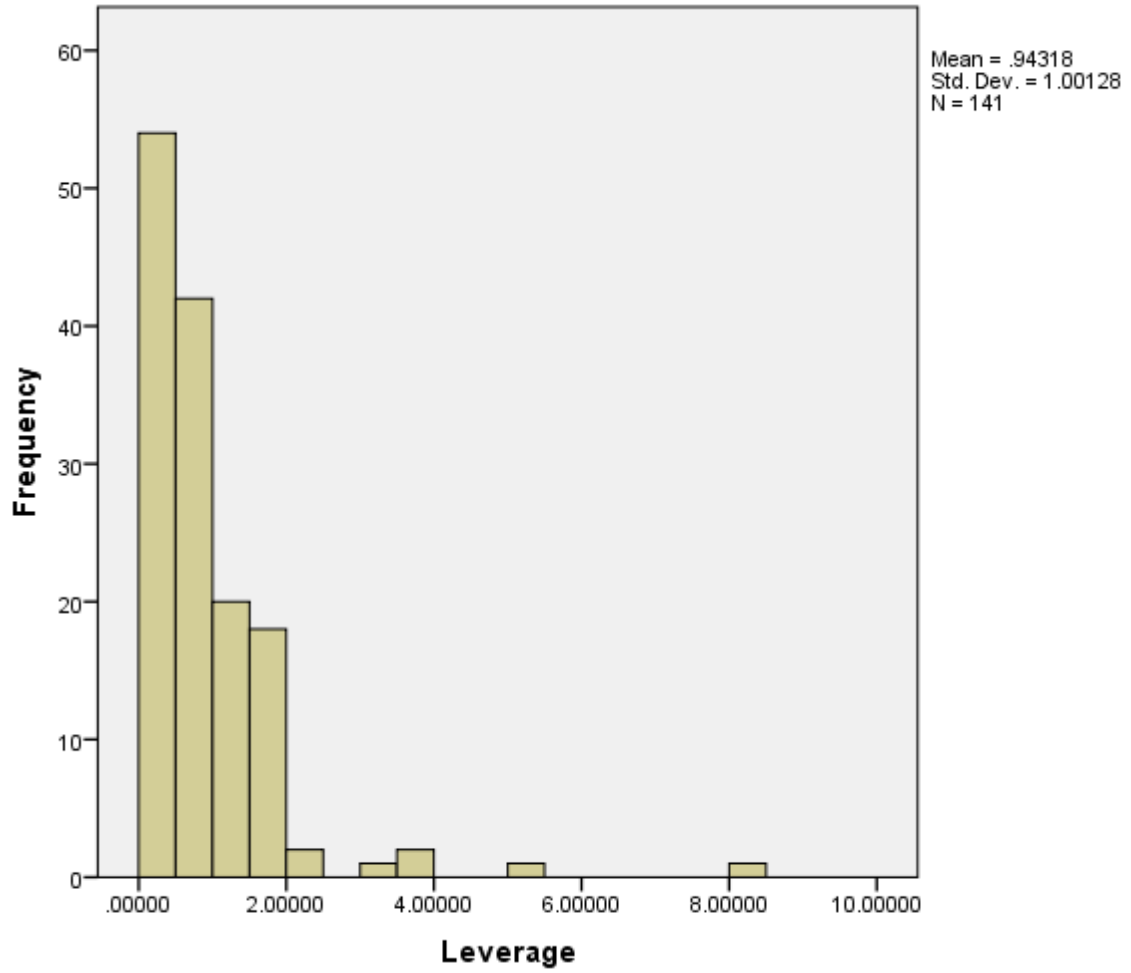
Lampiran 23

Histogram Likuiditas



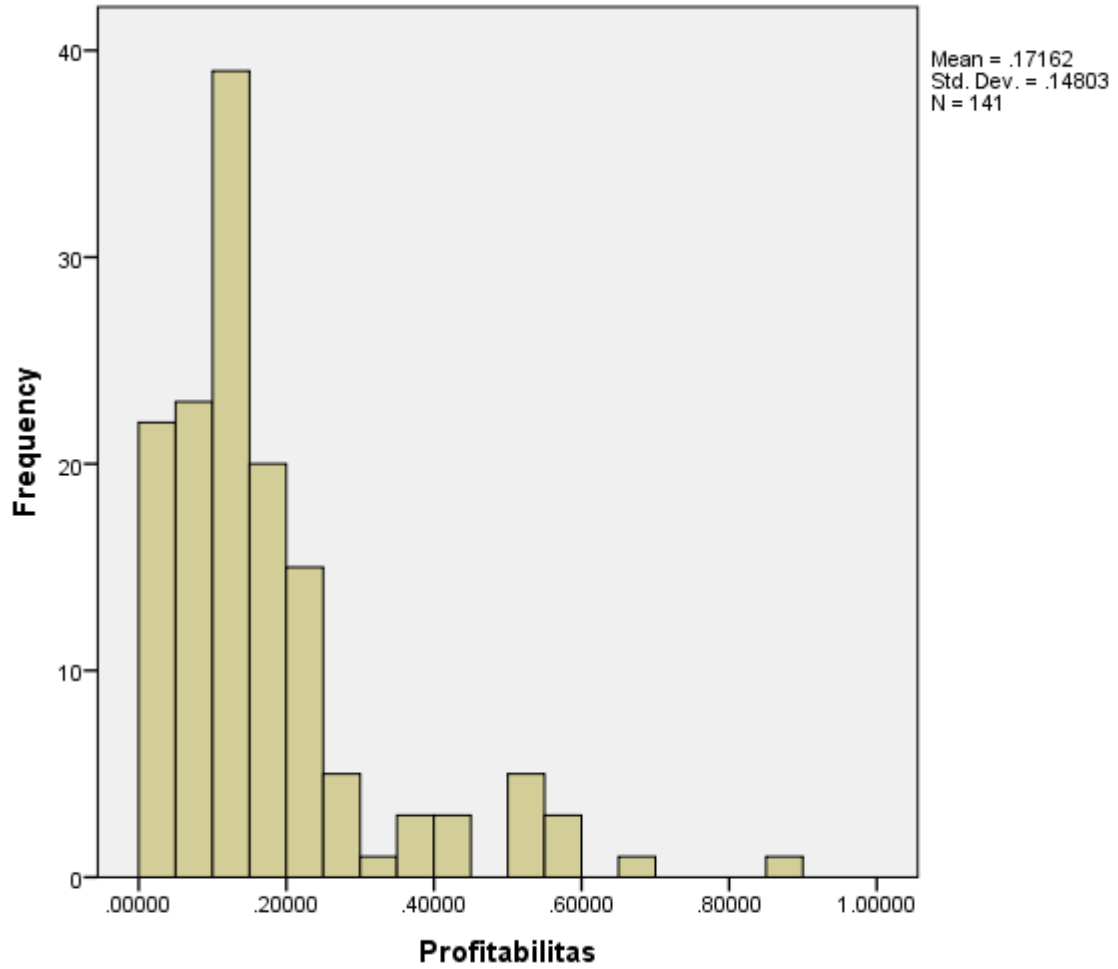
Lampiran 24

Histogram *Leverage*

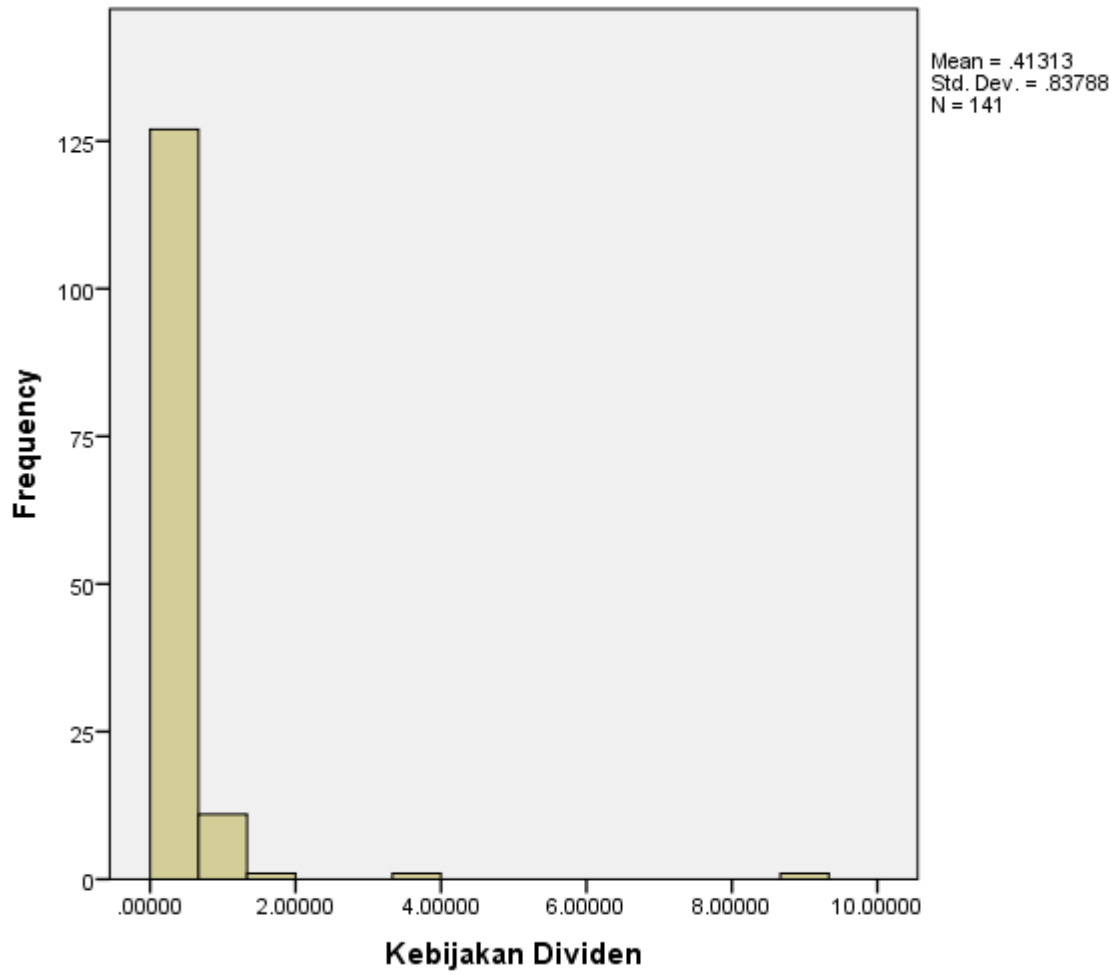


Lampiran 25

Histogram Profitabilitas



Lampiran 26
Histogram Kebijakan Dividen



Lampiran 27

Histogram Nilai Perusahaan

