

# LAMPIRAN

**Lampiran 1****Sampel Perusahaan Manufaktur 2012-2016**

<b>No</b>	<b>Kode</b>	<b>Nama Perusahaan</b>
1.	AISA	Tiga Pilar Sejahtera Food Tbk.
2.	ALDO	Alkindo Naratama Tbk.
3.	ALMI	Alumindo Light Metal Industri Tbk.
4.	AMFG	Asahimas Flat Glass Tbk.
5.	ASII	Astra International Tbk.
6.	AUTO	Astra Auto Part Tbk.
7.	BATA	Sepatu Bata Tbk.
8.	BRAM	Indo Kordsa Tbk.
9.	BRNA	Berlina Tbk.
10.	CEKA	Cahaya Kalbar Tbk.
11.	CPIN	Charoen Pokphand Indonesia Tbk.
12.	CTBN	Citra Turbindo Tbk.
13.	DLTA	Delta Djakarta Tbk.
14.	DPNS	Duta Pertiwi Nusantara
15.	FASW	Fajar Surya Wisesa Tbk.
16.	GDYR	Goodyear Indonesia Tbk.
17.	GGRM	Gudang Garam Tbk.
18.	HMSP	Hanjaya Mandala Sampoerna Tbk.
19.	ICBP	Indofood CBP Sukses Makmur Tbk.
20.	IGAR	Champion Pasific Indonesia Tbk.
21.	IMAS	Indomobil Sukses International Tbk.
22.	INAF	Indofarma Tbk.
23.	INAI	Indal Aluminium Industry Tbk.
24.	INDF	Indofood Sukses Makmur Tbk.
25.	INDR	Indo Rama Synthetic Tbk.
26.	INDS	Indospring Tbk.
27.	INKP	Indah Kiat Pulp dan Paper Tbk.

<b>No</b>	<b>Kode</b>	<b>Nama Perusahaan</b>
28.	INTP	Indocement Tunggal Prakarsa Tbk.
29.	IPOL	Indopoly Swakarsa Industry Tbk.
30.	JECC	Jembo Cable Company Tbk.
31.	JPFA	Japfa Comfeed Indonesia Tbk.
32.	KAEF	Kimia Farma Tbk.
33.	KBLI	KMI Wire and Cable Tbk.
34.	KBLM	Kabelindo Murni Tbk.
35.	KIAS	Keramika Indonesia Assosiasi Tbk.
36.	KLBF	Kalbe Farma Tbk.
37.	LION	Lion Metal Works Tbk.
38.	LMSH	Lionmesh Prima Tbk.
39.	MAIN	Malindo Feedmill Tbk.
40.	MASA	Multistrada Arah Sarana Tbk.
41.	MERK	Merck Indonesia Tbk.
42.	MLBI	Multi Bintang Indonesia Tbk.
43.	MYOR	Mayora Indah Tbk.
44.	NIKL	Pelat Timah Nusantara Tbk.
45.	PBRX	Pan Brothers Tbk.
46.	ROTI	Nippon Indosari Corporindo Tbk.
47.	SCCO	Supreme Cable Manufacturing and Commerce Tbk.
48.	SKBM	Sekar Bumi Tbk.
49.	SKLT	Sekar Laut Tbk.
50.	SMCB	Holcim Indonesia Tbk.
51.	SMGR	Semen Gresik Tbk.
52.	SMSM	Selamat Sempurna Tbk.
53.	TCID	Mandom Indonesia Tbk.
54.	TKIM	Pabrik Kertas Tjiwi Kimia Tbk.
55.	TOTO	Surya Toto Indonesia Tbk.
56.	TPIA	Chandra Asri Petrochemical Tbk.

No	Kode	Nama Perusahaan
57.	TRIS	Trisula International Tbk.
58.	TRST	Trias Sentosa Tbk.
59.	TSPC	Tempo Scan Pasific Tbk.
60.	ULTJ	Ultrajaya Milk Industry and Trading Company Tbk.
61.	UNIC	Unggul Indah Cahaya Tbk.
62.	UNVR	Unilever Indonesia Tbk.
63.	VOKS	Voksel Electric Tbk.

## Lampiran 2

Data Perhitungan Variabel Sampel Penelitian Periode 2012-2016

### 1. Kebijakan Dividen (*Dividend Payout Ratio*)

No	Kode	Tahun	DIVIDEND PAYOUT RATIO (DPR)		
			DPS	EPS	DPR
1	AISA	2012	6.5000	72.1800	0.090052646
2	ALMI	2012	50.0000	45.2900	1.103996467
3	AMFG	2012	80.0000	799.0000	0.100125156
4	ASII	2012	216.0000	480.0000	0.450000000
5	AUTO	2012	87.0000	264.0000	0.329545455
6	BATA	2012	27.9500	53.3400	0.523997000
7	BRAM	2012	175.0000	362.4814	0.482783392
8	BRNA	2012	23.0000	72.0000	0.319444444
9	CPIN	2012	42.0000	164.0000	0.256097561
10	CTBN	2012	437.3100	416.9022	1.048951049
11	DLTA	2012	11000.0000	12997.0000	0.846349157
12	GDYR	2012	260.0000	1554.8800	0.167215476
13	GGRM	2012	1000.0000	2086.0000	0.479386385
14	HMSP	2012	1750.0000	2269.0000	0.771264874
15	ICBP	2012	169.0000	374.0000	0.451871658
16	IGAR	2012	20.0000	28.1600	0.710227273
17	IMAS	2012	118.0000	289.9300	0.406994792
18	INDF	2012	243.0000	379.0000	0.641160950
19	INDR	2012	33.0000	14.5770	2.263840296
20	INDS	2012	160.0000	591.9200	0.270306798
21	INTP	2012	293.0000	1293.1500	0.226578510

No	Kode	Tahun	DIVIDEND PAYOUT RATIO (DPR)		
			DPS	EPS	DPR
22	IPOL	2012	1.0000	10.6898	0.093547120
23	JECC	2012	110.0000	211.7100	0.519578669
24	JPFA	2012	75.0000	94.0000	0.797872340
25	KAEF	2012	6.2000	36.9300	0.167885188
26	KBLM	2012	3.0000	21.0000	0.142857143
27	KLBF	2012	95.0000	37.0000	2.567567568
28	LION	2012	300.0000	1641.0000	0.182815356
29	LMSH	2012	100.0000	4300.0000	0.023255814
30	MAIN	2012	25.0000	179.0000	0.139664804
31	MASA	2012	2.0000	29.1540	0.068601221
32	MERK	2012	8270.0000	4813.0000	1.718263038
33	MLBI	2012	31030.0000	21516.0000	1.442182562
34	MYOR	2012	130.0000	816.0000	0.159313725
35	PBRX	2012	1.0000	23.3232	0.042875763
36	ROTI	2012	28.6300	29.4700	0.971496437
37	SCCO	2012	170.0000	824.0000	0.206310680
38	SKLT	2012	2.0000	11.5300	0.173460538
39	SMCB	2012	37.0000	176.0000	0.210227273
40	SMGR	2012	330.8900	817.0000	0.405006120
41	SMSM	2012	30.0000	152.0000	0.197368421
42	TCID	2012	370.0000	748.0000	0.494652406
43	TKIM	2012	25.0000	252.6680	0.098944069
44	TOTO	2012	100.0000	476.0000	0.210084034
45	TRIS	2012	2.0000	27.8200	0.071890726
46	TRST	2012	20.0000	22.0000	0.909090909
47	TSPC	2012	75.0000	140.0000	0.535714286
48	ULTJ	2012	10.0000	122.0000	0.081967213
49	UNIC	2012	90.0000	77.7440	1.157645606
50	UNVR	2012	596.0000	634.0000	0.940063091
51	VOKS	2012	48.0000	176.7400	0.271585380
52	AISA	2013	8.0000	106.0800	0.075414781
53	ALMI	2013	20.0000	84.8000	0.235849057
54	AMFG	2013	80.0000	780.0000	0.102564103
55	ASII	2013	64.0000	480.0000	0.133333333
56	AUTO	2013	83.5000	222.0000	0.376126126
57	BATA	2013	26.9300	34.1300	0.789041899
58	BRAM	2013	237.3600	131.0750	1.810871638

No	Kode	Tahun	DIVIDEND PAYOUT RATIO (DPR)		
			DPS	EPS	DPR
59	CPIN	2013	46.0000	154.0000	0.298701299
60	CTBN	2013	465.5000	585.5500	0.794979079
61	DLTA	2013	11500.0000	16515.0000	0.696336664
62	DPNS	2013	15.0000	174.8200	0.085802540
63	GDYR	2013	275.0000	1347.5000	0.204081633
64	GGRM	2013	800.0000	2250.0000	0.355555556
65	HMSP	2013	2269.0000	2468.0000	0.919367909
66	ICBP	2013	186.0000	382.0000	0.486910995
67	IGAR	2013	60.0000	20.2800	2.958579882
68	IMAS	2013	29.0000	192.5500	0.150610231
69	INAI	2013	50.0000	31.6900	1.577784790
70	INDF	2013	185.0000	225.0000	0.822222222
71	INDS	2013	475.0000	349.5300	1.358967757
72	INTP	2013	450.0000	1361.0200	0.330634377
73	IPOL	2013	1.0000	17.1500	0.058309038
74	JECC	2013	120.0000	151.6400	0.791347929
75	JPFA	2013	20.0000	56.0000	0.357142857
76	KAEF	2013	5.5000	38.6300	0.142376391
77	KBLI	2013	8.0000	18.3500	0.435967302
78	KBLM	2013	3.0000	7.0000	0.428571429
79	KIAS	2013	0.2400	4.7000	0.051063830
80	KLBF	2013	19.0000	41.0000	0.463414634
81	LION	2013	400.0000	1245.0000	0.321285141
82	LMSH	2013	150.0000	1498.0000	0.100133511
83	MAIN	2013	36.0000	142.0000	0.253521127
84	MERK	2013	3570.0000	7832.0000	0.455822268
85	MLBI	2013	24068.0000	55576.0000	0.433064632
86	MYOR	2013	230.0000	1115.0000	0.206278027
87	ROTI	2013	36.8300	31.2200	1.179692505
88	SCCO	2013	250.0000	509.0000	0.491159136
89	SKLT	2013	3.0000	16.5600	0.181159420
90	SMCB	2013	55.0000	124.0000	0.443548387
91	SMGR	2013	368.0000	905.0000	0.406629834
92	SMSM	2013	60.0000	214.0000	0.280373832
93	TCID	2013	370.0000	796.0000	0.464824121
94	TKIM	2013	25.0000	245.0000	0.102040816
95	TOTO	2013	100.0000	239.0000	0.418410042

No	Kode	Tahun	DIVIDEND PAYOUT RATIO (DPR)		
			DPS	EPS	DPR
96	TPIA	2013	14.5000	36.7500	0.394557823
97	TRIS	2013	9.0000	32.1300	0.280112045
98	TRST	2013	10.0000	12.0000	0.833333333
99	TSPC	2013	75.0000	141.0000	0.531914894
100	UNIC	2013	38.4000	269.5000	0.142486085
101	UNVR	2013	664.0000	776.0000	0.855670103
102	VOKS	2013	50.0000	47.0400	1.062925170
103	AISA	2014	7.7000	110.5700	0.069639143
104	ALDO	2014	1.5000	19.9800	0.075075075
105	ALMI	2014	20.0000	3.1600	6.329113924
106	AMFG	2014	80.0000	1057.0000	0.075685904
107	ASII	2014	64.0000	474.0000	0.135021097
108	AUTO	2014	72.0000	181.0000	0.397790055
109	BATA	2014	29.6300	54.4500	0.544168962
110	BRAM	2014	100.0000	383.8114	0.260544632
111	CEKA	2014	100.0000	138.0000	0.724637681
112	CPIN	2014	46.0000	107.0000	0.429906542
113	CTBN	2014	462.5740	397.5636	1.163522013
114	DLTA	2014	12000.0000	17621.0000	0.681005618
115	DPNS	2014	20.0000	46.6000	0.429184549
116	GDYR	2014	300.0000	875.1400	0.342802294
117	GGRM	2014	800.0000	2790.0000	0.286738351
118	HMSP	2014	2430.0000	2323.0000	1.046061128
119	ICBP	2014	190.0000	447.0000	0.425055928
120	IGAR	2014	10.0000	33.5300	0.298240382
121	INAI	2014	8.0000	69.6300	0.114893006
122	INDF	2014	142.0000	372.0000	0.381720430
123	INDS	2014	100.0000	193.0200	0.518081028
124	INKP	2014	25.0000	288.2961	0.086716394
125	INTP	2014	902.0000	1431.8200	0.629967454
126	IPOL	2014	1.0000	7.5012	0.133312003
127	JPFA	2014	10.0000	31.0000	0.322580645
128	KAEF	2014	9.7000	42.2400	0.229640152
129	KBLI	2014	4.0000	17.4900	0.228702115
130	KIAS	2014	1.5100	5.8700	0.257240204
131	KLBF	2014	17.0000	44.0000	0.386363636
132	LION	2014	400.0000	942.0000	0.424628450

No	Kode	Tahun	DIVIDEND PAYOUT RATIO (DPR)		
			DPS	EPS	DPR
133	LMSH	2014	200.0000	771.0000	0.259403372
134	MASA	2014	1.0000	75.0120	0.013331200
135	MERK	2014	6250.0000	8101.0000	0.771509690
136	MLBI	2014	579.0000	377.0000	1.535809019
137	MYOR	2014	230.0000	451.0000	0.509977827
138	PBRX	2014	1.0000	20.0032	0.049992001
139	ROTI	2014	3.1200	37.2600	0.083735910
140	SCCO	2014	150.0000	665.0000	0.225563910
141	SKBM	2014	12.4000	81.9900	0.151237956
142	SKLT	2014	4.0000	23.8600	0.167644593
143	SMCB	2014	34.0000	87.0000	0.390804598
144	SMGR	2014	407.4200	938.0000	0.434349680
145	SMSM	2014	115.0000	271.0000	0.424354244
146	TCID	2014	370.0000	867.0000	0.426758939
147	TKIM	2014	10.0000	125.0200	0.079987202
148	TOTO	2014	50.0000	297.0000	0.168350168
149	TPIA	2014	9.8766	68.7610	0.143636364
150	TRIS	2014	9.5000	22.8700	0.415391342
151	TRST	2014	5.0000	11.0000	0.454545455
152	TSPC	2014	75.0000	129.0000	0.581395349
153	ULTJ	2014	12.0000	98.0000	0.122448980
154	UNIC	2014	104.0000	87.5140	1.188381288
155	UNVR	2014	707.0000	766.0000	0.922976501
156	ALDO	2015	3.5000	24.9900	0.140056022
157	AMFG	2015	80.0000	786.0000	0.101781170
158	ASII	2015	177.0000	357.0000	0.495798319
159	AUTO	2015	27.0000	66.0000	0.409090909
160	BATA	2015	5.6200	99.6300	0.056408712
161	BRAM	2015	120.0000	320.2584	0.374697432
162	CPIN	2015	18.0000	112.0000	0.160714286
163	CTBN	2015	346.6000	140.0264	2.475247525
164	DLTA	2015	6000.0000	238.0000	25.210084034
165	DPNS	2015	15.0000	33.1000	0.453172205
166	GGRM	2015	800.0000	3345.0000	0.239162930
167	HMSP	2015	975.0000	93.0000	10.483870968
168	ICBP	2015	222.0000	257.0000	0.863813230
169	INAI	2015	35.0000	90.3300	0.387468172



No	Kode	Tahun	DIVIDEND PAYOUT RATIO (DPR)		
			DPS	EPS	DPR
170	INDF	2015	220.0000	293.0000	0.750853242
171	INDS	2015	55.0000	1.4400	38.194444444
172	INKP	2015	25.0000	564.5421	0.044283679
173	INTP	2015	1350.0000	1183.4800	1.140703687
174	JECC	2015	60.0000	16.4200	3.654080390
175	KAEF	2015	8.4000	47.0700	0.178457616
176	KBLI	2015	4.0000	28.7900	0.138937131
177	KBLM	2015	5.0000	11.0000	0.454545455
178	KLBF	2015	19.0000	42.7600	0.444340505
179	LION	2015	40.0000	88.0000	0.454545455
180	LMSH	2015	10.0000	20.0000	0.500000000
181	MERK	2015	3300.0000	2463.0000	1.339829476
182	MLBI	2015	138.0000	236.0000	0.584745763
183	MYOR	2015	160.0000	55.0000	2.909090909
184	PBRX	2015	1.0000	19.4096	0.051520897
185	ROTI	2015	5.5300	53.4500	0.103461179
186	SCCO	2015	200.0000	773.0000	0.258732212
187	SKBM	2015	12.0000	44.4800	0.269784173
188	SKLT	2015	5.0000	29.5500	0.169204738
189	SMCB	2015	65.0000	23.0000	2.826086957
190	SMGR	2015	375.3400	762.0000	0.492572178
191	SMSM	2015	50.0000	74.0000	0.675675676
192	TCID	2015	390.0000	2708.0000	0.144017725
193	TKIM	2015	10.0000	6.9320	1.442585113
194	TOTO	2015	50.0000	282.0000	0.177304965
195	TPIA	2015	18.9937	110.9120	0.171250000
196	TRIS	2015	9.5000	23.3700	0.406504065
197	TRST	2015	5.0000	9.0000	0.555555556
198	TSPC	2015	64.0000	116.0000	0.551724138
199	UNVR	2015	758.0000	766.0000	0.989556136
200	AMFG	2016	80.0000	600.0000	0.133333333
201	ASII	2016	55.0000	374.0000	0.147058824
202	AUTO	2016	9.0000	87.0000	0.103448276
203	BATA	2016	24.6700	32.4900	0.759310557
204	BRAM	2016	230.5300	577.9284	0.398890243
205	CPIN	2016	29.0000	135.0000	0.214814815
206	DLTA	2016	120.0000	317.0000	0.378548896

No	Kode	Tahun	DIVIDEND PAYOUT RATIO (DPR)		
			DPS	EPS	DPR
207	DPNS	2016	5.0000	34.0800	0.146713615
208	FASW	2016	24.0000	313.9800	0.076437990
209	GGRM	2016	2600.0000	3470.0000	0.749279539
210	HMSP	2016	2225.0000	110.0000	20.227272727
211	ICBP	2016	256.0000	309.0000	0.828478964
212	IGAR	2016	5.0000	48.1200	0.103906899
213	INAI	2016	45.0000	112.2300	0.400962310
214	INDF	2016	168.0000	433.0000	0.387990762
215	INKP	2016	25.0000	500.2862	0.049971401
216	INTP	2016	415.0000	1051.3700	0.394723076
217	IPOL	2016	0.0900	12.1527	0.007405762
218	JECC	2016	200.0000	875.8100	0.228360032
219	JPFA	2016	15.0000	189.0000	0.079365079
220	KAEF	2016	9.0000	48.1500	0.186915888
221	KBLI	2016	7.0000	83.4300	0.083902673
222	KBLM	2016	3.0000	19.0000	0.157894737
223	KLBF	2016	19.0000	49.0600	0.387280881
224	LION	2016	40.0000	81.0000	0.493827160
225	LMSH	2016	5.0000	65.0000	0.076923077
226	MERK	2016	100.0000	343.0000	0.291545190
227	MLBI	2016	439.0000	466.0000	0.942060086
228	MYOR	2016	300.0000	61.0000	4.918032787
229	PBRX	2016	2.0000	31.0569	0.064397928
230	ROTI	2016	10.6100	55.3100	0.191827879
231	SCCO	2016	225.0000	1656.0000	0.135869565
232	SKLT	2016	6.0000	30.0100	0.199933356
233	SMGR	2016	304.9100	762.0000	0.400144357
234	SMSM	2016	35.0000	79.0000	0.443037975
235	TCID	2016	410.0000	806.0000	0.508684864
236	TKIM	2016	5.0000	39.1587	0.127685546
237	TOTO	2016	5.0000	16.3300	0.306184936
238	TPIA	2016	135.3001	1232.8239	0.109748083
239	TRIS	2016	8.0000	5.3400	1.498127341
240	TRST	2016	5.0000	12.0000	0.416666667
241	TSPC	2016	50.0000	119.0000	0.420168067
242	ULTJ	2016	2.8000	243.0000	0.011522634
243	UNIC	2016	69.0000	804.7788	0.085737845

No	Kode	Tahun	DIVIDEND PAYOUT RATIO (DPR)		
			DPS	EPS	DPR
244	UNVR	2016	799.0000	838.0000	0.953460621

2. Profitabilitas (*Return On Assets*)

No	Kode	Tahun	RETURN ON ASSETS (ROA)		
			Laba Bersih	Total Aset	ROA
1	AISA	2012	2.53664E+11	3.86758E+12	0.065587334
2	ALMI	2012	13949141063	1.88157E+12	0.007413571
3	AMFG	2012	3.46609E+11	3.11542E+12	0.111255911
4	ASII	2012	2.2742E+13	1.82274E+14	0.124768206
5	AUTO	2012	1.13591E+12	8.88164E+12	0.127894594
6	BATA	2012	69343398000	5.74108E+11	0.120784589
7	BRAM	2012	2.19105E+11	2.23777E+12	0.097912364
8	BRNA	2012	54496290000	7.70384E+11	0.070739131
9	CPIN	2012	2.68087E+12	1.23486E+13	0.217098792
10	CTBN	2012	3.33475E+11	2.60869E+12	0.127832657
11	DLTA	2012	2.13421E+11	7.45307E+11	0.286353307
12	GDYR	2012	64857902846	1.20421E+12	0.053859332
13	GGRM	2012	4.06871E+12	4.15093E+13	0.098019204
14	HMSP	2012	9.9453E+12	2.62475E+13	0.378904115
15	ICBP	2012	2.28237E+12	1.78199E+13	0.128080014
16	IGAR	2012	44507701367	3.12343E+11	0.142496344
17	IMAS	2012	8.99091E+11	1.75777E+13	0.051149623
18	INDF	2012	4.77945E+12	5.93894E+13	0.080476408
19	INDR	2012	4209847318	6.67542E+12	0.000630649
20	INDS	2012	1.34068E+11	1.66478E+12	0.080532163
21	INTP	2012	4.76339E+12	2.27552E+13	0.209332213
22	IPOL	2012	72784331238	2.74852E+12	0.026481269
23	JECC	2012	31770770000	7.08955E+11	0.044813510
24	JPFA	2012	1.07458E+12	1.09615E+13	0.098032252
25	KAEF	2012	2.05764E+11	2.07635E+12	0.099099014
26	KBLM	2012	23833078478	7.22941E+11	0.032966822
27	KLBF	2012	1.7751E+12	9.41796E+12	0.188480242
28	LION	2012	85373721654	4.33497E+11	0.196941878
29	LMSH	2012	41282515026	1.28548E+11	0.321145459
30	MAIN	2012	3.02421E+11	1.79988E+12	0.168022738

No	Kode	Tahun	RETURN ON ASSETS (ROA)		
			Laba Bersih	Total Aset	ROA
31	MASA	2012	3107301346	6.06875E+12	0.000512016
32	MERK	2012	1.07808E+11	5.69431E+11	0.189326124
33	MLBI	2012	4.53405E+11	1.15205E+12	0.393564331
34	MYOR	2012	7.44428E+11	8.30251E+12	0.089663095
35	PBRX	2012	67373144760	2.02427E+12	0.033282626
36	ROTI	2012	1.4915E+11	1.20494E+12	0.123781241
37	SCCO	2012	1.69742E+11	1.48692E+12	0.114156439
38	SKLT	2012	7962693771	2.49746E+11	0.031883109
39	SMCB	2012	1.35079E+12	1.21685E+13	0.111007036
40	SMGR	2012	4.92664E+12	2.65791E+13	0.185357776
41	SMSM	2012	2.54635E+11	1.56518E+12	0.162687201
42	TCID	2012	1.50374E+11	1.26157E+12	0.119195526
43	TKIM	2012	3.38352E+11	2.60641E+13	0.012981527
44	TOTO	2012	2.35946E+11	1.52266E+12	0.154955825
45	TRIS	2012	44393034558	3.85194E+11	0.115248644
46	TRST	2012	61453058755	2.18813E+12	0.028084751
47	TSPC	2012	6.35176E+11	4.63298E+12	0.137098673
48	ULTJ	2012	3.53432E+11	2.42079E+12	0.145998259
49	UNIC	2012	15924264648	2.41269E+12	0.006600199
50	UNVR	2012	4.83915E+12	1.1985E+13	0.403767499
51	VOKS	2012	1.47021E+11	1.69808E+12	0.086580560
52	AISA	2013	3.46728E+11	5.02578E+12	0.068989916
53	ALMI	2013	26118732307	2.75208E+12	0.009490549
54	AMFG	2013	3.38358E+11	3.53939E+12	0.095597748
55	ASII	2013	2.2297E+13	2.13994E+14	0.104194510
56	AUTO	2013	9.99766E+11	1.24848E+13	0.080078380
57	BATA	2013	44373679000	6.80685E+11	0.065189735
58	BRAM	2013	67892807500	2.9281E+12	0.023186659
59	CPIN	2013	2.52869E+12	1.57222E+13	0.160835664
60	CTBN	2013	4.68729E+11	3.35835E+12	0.139571025
61	DLTA	2013	2.70498E+11	8.67041E+11	0.311978469
62	DPNS	2013	66813230321	2.56373E+11	0.260609801
63	GDYR	2013	56771289750	1.36034E+12	0.041733162
64	GGRM	2013	4.38393E+12	5.07703E+13	0.086348441
65	HMSP	2013	1.08185E+13	2.74046E+13	0.394769067
66	ICBP	2013	2.23504E+12	2.12675E+13	0.105091955
67	IGAR	2013	35030416158	3.14747E+11	0.111297187

No	Kode	Tahun	RETURN ON ASSETS (ROA)		
			Laba Bersih	Total Aset	ROA
68	IMAS	2013	6.2114E+11	2.2315E+13	0.027835050
69	INAI	2013	5019540731	7.65881E+11	0.006553940
70	INDF	2013	3.41664E+12	7.76114E+13	0.044022325
71	INDS	2013	1.47608E+11	2.19652E+12	0.067201099
72	INTP	2013	5.01229E+12	2.66072E+13	0.188380825
73	IPOL	2013	1.16417E+11	3.39948E+12	0.034245603
74	JECC	2013	22553551000	1.23982E+12	0.018190963
75	JPFA	2013	6.40637E+11	1.49176E+13	0.042945074
76	KAEF	2013	2.15642E+11	2.47194E+12	0.087236086
77	KBLI	2013	73530280777	1.33702E+12	0.054995553
78	KBLM	2013	7678095359	6.54296E+11	0.011734891
79	KIAS	2013	75360306268	2.2709E+12	0.033185144
80	KLBF	2013	1.97045E+12	1.13151E+13	0.174144214
81	LION	2013	64761350816	4.98568E+11	0.129894747
82	LMSH	2013	14382899194	1.41698E+11	0.101504184
83	MAIN	2013	2.41633E+11	2.2144E+12	0.109118853
84	MERK	2013	1.75445E+11	6.96946E+11	0.251733530
85	MLBI	2013	1.17123E+12	1.78215E+12	0.657200749
86	MYOR	2013	1.01356E+12	9.71022E+12	0.104380527
87	ROTI	2013	1.58015E+11	1.82269E+12	0.086693488
88	SCCO	2013	1.04962E+11	1.76203E+12	0.059568893
89	SKLT	2013	11440014188	3.01989E+11	0.037882160
90	SMCB	2013	9.52305E+11	1.4895E+13	0.063934585
91	SMGR	2013	5.3543E+12	3.07929E+13	0.173881034
92	SMSM	2013	3.38223E+11	1.71271E+12	0.197478144
93	TCID	2013	1.60148E+11	1.46595E+12	0.109245334
94	TKIM	2013	3.30873E+11	3.19107E+13	0.010368697
95	TOTO	2013	2.36558E+11	1.74618E+12	0.135471616
96	TPIA	2013	1.35118E+11	2.33661E+13	0.005782626
97	TRIS	2013	51984966129	4.75428E+11	0.109343454
98	TRST	2013	32965552359	3.26092E+12	0.010109281
99	TSPC	2013	6.38535E+11	5.40796E+12	0.118073239
100	UNIC	2013	1.26273E+11	3.29856E+12	0.038281348
101	UNVR	2013	5.35263E+12	1.27035E+13	0.421351477
102	VOKS	2013	39092753172	1.95583E+12	0.019987804
103	AISA	2014	3.77903E+11	7.37387E+12	0.051248951
104	ALDO	2014	21061034612	3.56814E+11	0.059025203

No	Kode	Tahun	RETURN ON ASSETS (ROA)		
			Laba Bersih	Total Aset	ROA
105	ALMI	2014	1948963064	3.21244E+12	0.000606693
106	AMFG	2014	4.58635E+11	3.91839E+12	0.117046767
107	ASII	2014	2.2125E+13	2.36029E+14	0.093738481
108	AUTO	2014	9.56409E+11	1.43809E+13	0.066505384
109	BATA	2014	70781440000	7.74891E+11	0.091343727
110	BRAM	2014	1.98611E+11	3.85434E+12	0.051529246
111	CEKA	2014	41001414954	1.28415E+12	0.031928835
112	CPIN	2014	1.74664E+12	2.1083E+13	0.082846069
113	CTBN	2014	3.18558E+11	3.17509E+12	0.100330333
114	DLTA	2014	2.88073E+11	9.91947E+11	0.290412082
115	DPNS	2014	14519866284	2.68877E+11	0.054001826
116	GDYR	2014	34277433512	1.56898E+12	0.021846966
117	GGRM	2014	5.39529E+12	5.82206E+13	0.092669828
118	HMSP	2014	1.01811E+13	2.83806E+13	0.358733509
119	ICBP	2014	2.53168E+12	2.49102E+13	0.101632258
120	IGAR	2014	54898874758	3.49895E+11	0.156901095
121	INAI	2014	22058700759	8.97282E+11	0.024583920
122	INDF	2014	5.22949E+12	8.60773E+13	0.060753439
123	INDS	2014	1.27657E+11	2.28267E+12	0.055924671
124	INKP	2014	1.57718E+12	8.1504E+13	0.019350931
125	INTP	2014	5.27401E+12	2.8885E+13	0.182586600
126	IPOL	2014	51381844780	3.56814E+12	0.014400178
127	JPFA	2014	3.84846E+11	1.57304E+13	0.024465058
128	KAEF	2014	2.36531E+11	3.19466E+12	0.074039416
129	KBLI	2014	70080135740	1.33735E+12	0.052402182
130	KIAS	2014	92239403158	2.20316E+12	0.041866903
131	KLBF	2014	2.12109E+12	1.2425E+13	0.170711071
132	LION	2014	49001630102	6.00103E+11	0.081655405
133	LMSH	2014	7403115436	1.39916E+11	0.052911295
134	MASA	2014	5913633530	7.8163E+12	0.000756577
135	MERK	2014	1.81472E+11	7.166E+11	0.253240795
136	MLBI	2014	7.94883E+11	2.23105E+12	0.356281860
137	MYOR	2014	4.09825E+11	1.02911E+13	0.039823192
138	PBRX	2014	1.26366E+11	4.58191E+12	0.027579390
139	ROTI	2014	1.88578E+11	2.14289E+12	0.088001318
140	SCCO	2014	1.37619E+11	1.65601E+12	0.083102840
141	SKBM	2014	89115994107	6.49534E+11	0.137199885

No	Kode	Tahun	RETURN ON ASSETS (ROA)		
			Laba Bersih	Total Aset	ROA
142	SKLT	2014	16480714984	3.31575E+11	0.049704352
143	SMCB	2014	6.68869E+11	1.71954E+13	0.038898244
144	SMGR	2014	5.57358E+12	3.43147E+13	0.162425514
145	SMSM	2014	4.21467E+11	1.7494E+12	0.240921576
146	TCID	2014	1.74314E+11	1.85324E+12	0.094059502
147	TKIM	2014	2.55966E+11	3.38921E+13	0.007552373
148	TOTO	2014	2.93804E+11	2.02729E+12	0.144924554
149	TPIA	2014	2.23514E+11	2.40477E+13	0.009294581
150	TRIS	2014	35944155042	5.24822E+11	0.068488268
151	TRST	2014	30084477143	3.26129E+12	0.009224730
152	TSPC	2014	5.84293E+11	5.59273E+12	0.104473667
153	ULTJ	2014	2.83361E+11	2.91708E+12	0.097138429
154	UNIC	2014	32176197368	2.95068E+12	0.010904674
155	UNVR	2014	5.92672E+12	1.42807E+13	0.415016942
156	ALDO	2015	24079122338	3.66011E+11	0.065788007
157	AMFG	2015	3.41346E+11	4.27028E+12	0.079935367
158	ASII	2015	1.5613E+13	2.45435E+14	0.063613584
159	AUTO	2015	3.22701E+11	1.43391E+13	0.022504953
160	BATA	2015	1.29519E+11	7.95258E+11	0.162864693
161	BRAM	2015	1.7432E+11	4.046E+12	0.043084696
162	CPIN	2015	1.73618E+12	2.49167E+13	0.069679414
163	CTBN	2015	1.12507E+11	3.08555E+12	0.036462723
164	DLTA	2015	1.92045E+11	1.03832E+12	0.184957282
165	DPNS	2015	9859176172	2.74483E+11	0.035919063
166	GGRM	2015	6.45283E+12	6.35054E+13	0.101610771
167	HMSP	2015	1.03633E+13	3.80107E+13	0.272641689
168	ICBP	2015	2.92315E+12	2.65606E+13	0.110055697
169	INAI	2015	28615673167	1.33026E+12	0.021511350
170	INDF	2015	3.7095E+12	9.18315E+13	0.040394635
171	INDS	2015	1933819152	2.55393E+12	0.000757194
172	INKP	2015	3.08816E+12	9.75805E+13	0.031647337
173	INTP	2015	4.35666E+12	2.76384E+13	0.157630952
174	JECC	2015	2464669000	1.35846E+12	0.001814306
175	KAEF	2015	2.6555E+11	3.43488E+12	0.077309779
176	KBLI	2015	1.15371E+11	1.5518E+12	0.074346637
177	KBLM	2015	12760365612	6.54386E+11	0.019499762
178	KLBF	2015	2.05769E+12	1.36964E+13	0.150235950

No	Kode	Tahun	RETURN ON ASSETS (ROA)		
			Laba Bersih	Total Aset	ROA
179	LION	2015	46018637487	6.3933E+11	0.071979458
180	LMSH	2015	1944443395	1.33783E+11	0.014534336
181	MERK	2015	1.42545E+11	6.41647E+11	0.222155644
182	MLBI	2015	4.96909E+11	2.10085E+12	0.236527258
183	MYOR	2015	1.25023E+12	1.13427E+13	0.110223439
184	PBRX	2015	1.19528E+11	6.13955E+12	0.019468596
185	ROTI	2015	2.70539E+11	2.70632E+12	0.099965391
186	SCCO	2015	1.5912E+11	1.77314E+12	0.089738688
187	SKBM	2015	40150568620	7.64484E+11	0.052519811
188	SKLT	2015	20066791849	3.77111E+11	0.053211933
189	SMCB	2015	1.75127E+11	1.73709E+13	0.010081645
190	SMGR	2015	4.52544E+12	3.81531E+13	0.118612611
191	SMSM	2015	4.61307E+11	2.22011E+12	0.207785837
192	TCID	2015	5.44474E+11	2.0821E+12	0.261502859
193	TKIM	2015	20130528000	3.72092E+13	0.000541009
194	TOTO	2015	2.85237E+11	2.43954E+12	0.116922322
195	TPIA	2015	3.64013E+11	2.58201E+13	0.014098044
196	TRIS	2015	44185600626	5.77786E+11	0.076473944
197	TRST	2015	25314103403	3.35736E+12	0.007539885
198	TSPC	2015	5.29219E+11	6.28473E+12	0.084207075
199	UNVR	2015	5.85181E+12	1.57299E+13	0.372016876
200	AMFG	2016	2.60444E+11	5.50489E+12	0.047311390
201	ASII	2016	1.8302E+13	2.61855E+14	0.069893643
202	AUTO	2016	4.83421E+11	1.46123E+13	0.033083215
203	BATA	2016	42231663000	8.04743E+11	0.052478453
204	BRAM	2016	3.01111E+11	3.9977E+12	0.075321032
205	CPIN	2016	2.25181E+12	2.4205E+13	0.093030926
206	DLTA	2016	2.54509E+11	1.1978E+12	0.212481199
207	DPNS	2016	10009391103	2.9613E+11	0.033800715
208	FASW	2016	7.78013E+11	8.58322E+12	0.090643420
209	GGRM	2016	6.67268E+12	6.29516E+13	0.105996963
210	HMSP	2016	1.27622E+13	4.25083E+13	0.300229271
211	ICBP	2016	3.6313E+12	2.89019E+13	0.125642085
212	IGAR	2016	69305629795	4.39466E+11	0.157704308
213	INAI	2016	35552975244	1.33903E+12	0.026551243
214	INDF	2016	5.26691E+12	8.21745E+13	0.064094154
215	INKP	2016	2.7378E+12	9.28844E+13	0.029475345



No	Kode	Tahun	RETURN ON ASSETS (ROA)		
			Laba Bersih	Total Aset	ROA
216	INTP	2016	3.87032E+12	3.01506E+13	0.128366320
217	IPOL	2016	87733946601	3.81992E+12	0.022967464
218	JECC	2016	1.32423E+11	1.58721E+12	0.083431375
219	JPFA	2016	2.17161E+12	1.9251E+13	0.112804793
220	KAEF	2016	2.71598E+11	4.61256E+12	0.058882225
221	KBLI	2016	3.34339E+11	1.87142E+12	0.178654929
222	KBLM	2016	21245022916	6.39091E+11	0.033242544
223	KLBF	2016	2.35088E+12	1.5226E+13	0.154399285
224	LION	2016	42345417055	6.85813E+11	0.061744845
225	LMSH	2016	6252814811	1.62828E+11	0.038401309
226	MERK	2016	1.53843E+11	7.43935E+11	0.206796116
227	MLBI	2016	9.82129E+11	2.27504E+12	0.431697844
228	MYOR	2016	1.38868E+12	1.29224E+13	0.107462529
229	PBRX	2016	1.79404E+11	7.0149E+12	0.025574677
230	ROTI	2016	2.79777E+11	2.91964E+12	0.095825953
231	SCCO	2016	3.40594E+11	2.44994E+12	0.139021469
232	SKLT	2016	20646121074	5.6824E+11	0.036333456
233	SMGR	2016	4.53504E+12	4.42269E+13	0.102540247
234	SMSM	2016	5.02192E+11	2.25474E+12	0.222727232
235	TCID	2016	1.6206E+11	2.1851E+12	0.074165722
236	TKIM	2016	1.03338E+11	3.36398E+13	0.003071912
237	TOTO	2016	1.68565E+11	2.58144E+12	0.065298640
238	TPIA	2016	4.05259E+12	2.87515E+13	0.140952130
239	TRIS	2016	25213015324	6.39701E+11	0.039413740
240	TRST	2016	33794866940	3.2906E+12	0.010270135
241	TSPC	2016	5.45494E+11	6.58581E+12	0.082828651
242	ULTJ	2016	7.09826E+11	4.2392E+12	0.167443314
243	UNIC	2016	2.85214E+11	3.06401E+12	0.093085088
244	UNVR	2016	6.39067E+12	1.67457E+13	0.381630742

### 3. Kepemilikan Institusional (KI)

No	Kode	Tahun	KEPEMILIKAN INSTITUSIONAL (KI)		
			Kep. Saham Institusional	Total Saham Beredar	Kepemilikan Institusional
1	AISA	2012	1564634061	2926000000	0.534734812

No	Kode	Tahun	KEPEMILIKAN INSTITUSIONAL (KI)		
			Kep. Saham Institusional	Total Saham Beredar	Kepemilikan Institusional
2	ALMI	2012	258235500	308000000	0.838426948
3	AMFG	2012	367617500	434000000	0.847044931
4	ASII	2012	20288255040	40483553140	0.501148083
5	AUTO	2012	3688203070	3855786400	0.956537185
6	BATA	2012	11412581	13000000	0.877890846
7	BRAM	2012	296154682	450000000	0.658121516
8	BRNA	2012	354825000	690000000	0.514239130
9	CPIN	2012	9106385410	16398000000	0.555335127
10	CTBN	2012	647414300	800000000	0.809267875
11	DLTA	2012	13078143	16013181	0.816711121
12	GDYR	2012	38569000	41000000	0.940707317
13	GGRM	2012	1453589500	1924088000	0.755469344
14	HMSP	2012	4303168205	4383000000	0.981786038
15	ICBP	2012	4695839000	5830954000	0.805329454
16	IGAR	2012	824612420	1050000000	0.785345162
17	IMAS	2012	1946757158	2765278412	0.704000418
18	INDF	2012	4396103450	8780426500	0.500670833
19	INDR	2012	387250714	654351707	0.591808212
20	INDS	2012	277540900	315000000	0.881082222
21	INTP	2012	2357216097	3681231699	0.640333532
22	IPOL	2012	4140322280	6440516680	0.642855610
23	JECC	2012	136303300	151200000	0.901476852
24	JPFA	2012	1226139947	2132104582	0.575084336
25	KAEF	2012	5000000000	5554000000	0.900252071
26	KBLM	2012	836781900	1120000000	0.747126696
27	KLBF	2012	26549155085	50780072110	0.522826258
28	LION	2012	30012000	52016000	0.576976315
29	LMSH	2012	3092700	9600000	0.322156250
30	MAIN	2012	1001675000	1695000000	0.590958702
31	MASA	2012	4382992000	9182946945	0.477296888
32	MERK	2012	19409746	22400000	0.866506518
33	MLBI	2012	17389130	21070000	0.825302800
34	MYOR	2012	253472012	766584000	0.330651321
35	PBRX	2012	1657750640	3065112092	0.540845030
36	ROTI	2012	766862700	1012360000	0.757500000
37	SCCO	2012	138275640	205583400	0.672601193

No	Kode	Tahun	KEPEMILIKAN INSTITUSIONAL (KI)		
			Kep. Saham Institusional	Total Saham Beredar	Kepemilikan Institusional
38	SKLT	2012	663740500	690740500	0.960911515
39	SMCB	2012	6179612820	7662900000	0.806432659
40	SMGR	2012	3025406000	5931520000	0.510055770
41	SMSM	2012	836815927	1439668860	0.581255836
42	TCID	2012	148334763	201066667	0.737739205
43	TKIM	2012	796176423	1335702240	0.596073286
44	TOTO	2012	476584320	495360000	0.962096899
45	TRIS	2012	700000000	1000000000	0.700000000
46	TRST	2012	1694528325	2808000000	0.603464503
47	TSPC	2012	3477850818	4500000000	0.772855737
48	ULTJ	2012	1345697026	2888382000	0.465899949
49	UNIC	2012	292188989	383331363	0.762236063
50	UNVR	2012	6484877500	7630000000	0.849918414
51	VOKS	2012	404377042	831120519	0.486544409
52	AISA	2013	1630068394	2926000000	0.557097879
53	ALMI	2013	234011883	308000000	0.759778841
54	AMFG	2013	367617500	434000000	0.847044931
55	ASII	2013	20288255040	40483553140	0.501148083
56	AUTO	2013	3855786337	4819733000	0.799999987
57	BATA	2013	1131697400	1300000000	0.870536462
58	BRAM	2013	296154682	450000000	0.658121516
59	CPIN	2013	9106385410	16398000000	0.555335127
60	CTBN	2013	659846300	800371500	0.824425033
61	DLTA	2013	13078143	16013181	0.816711121
62	DPNS	2013	220093451	331129952	0.664673943
63	GDYR	2013	38548000	41000000	0.940195122
64	GGRM	2013	1453589500	1924088000	0.755469344
65	HMSP	2013	4303168205	4383000000	0.981786038
66	ICBP	2013	4695839000	5830954000	0.805329454
67	IGAR	2013	824612420	972204500	0.848188236
68	IMAS	2013	2475963224	2765278412	0.895375747
69	INAI	2013	104328000	158400000	0.658636364
70	INDF	2013	4396103450	8780426500	0.500670833
71	INDS	2013	462568166	525000000	0.881082221
72	INTP	2013	2357216097	3681231699	0.640333532
73	IPOL	2013	4140322280	6443379509	0.642569986

No	Kode	Tahun	KEPEMILIKAN INSTITUSIONAL (KI)		
			Kep. Saham Institusional	Total Saham Beredar	Kepemilikan Institusional
74	JECC	2013	136303300	151200000	0.901476852
75	JPFA	2013	6130699735	10660522910	0.575084336
76	KAEF	2013	5000000000	5554000000	0.900252071
77	KBLI	2013	2954752814	4007235107	0.737354494
78	KBLM	2013	899571900	1120000000	0.803189196
79	KIAS	2013	14666550953	14929100000	0.982413605
80	KLBF	2013	26581655085	46875122110	0.567073831
81	LION	2013	30012000	52016000	0.576976315
82	LMSH	2013	3092700	9600000	0.322156250
83	MAIN	2013	1001675000	1695000000	0.590958702
84	MERK	2013	19409746	22400000	0.866506518
85	MLBI	2013	17629950	21070000	0.836732321
86	MYOR	2013	295717347	894347989	0.330651324
87	ROTI	2013	3581223500	5061800000	0.707500000
88	SCCO	2013	138275640	205583400	0.672601193
89	SKLT	2013	663740500	690740500	0.960911515
90	SMCB	2013	6179612820	7662900000	0.806432659
91	SMGR	2013	3025406000	5931520000	0.510055770
92	SMSM	2013	836815927	1439668860	0.581255836
93	TCID	2013	148334763	201066667	0.737739205
94	TKIM	2013	796176423	1335702240	0.596073286
95	TOTO	2013	476584320	495360000	0.962096899
96	TPIA	2013	3133741311	3286962558	0.953385156
97	TRIS	2013	700000000	1002598000	0.698186112
98	TRST	2013	1676839325	2808000000	0.597165002
99	TSPC	2013	3480146818	4500000000	0.773365960
100	UNIC	2013	302878259	383331363	0.790121259
101	UNVR	2013	6484877500	7630000000	0.849918414
102	VOKS	2013	444377042	831120519	0.534672207
103	AISA	2014	1998519189	3218600000	0.620928102
104	ALDO	2014	321230769	550000000	0.584055944
105	ALMI	2014	505896800	616000000	0.821261039
106	AMFG	2014	367717500	434000000	0.847275346
107	ASII	2014	20288255040	40483553140	0.501148083
108	AUTO	2014	3855786337	4819733000	0.799999987
109	BATA	2014	1132954900	1300000000	0.871503769

No	Kode	Tahun	KEPEMILIKAN INSTITUSIONAL (KI)		
			Kep. Saham Institusional	Total Saham Beredar	Kepemilikan Institusional
110	BRAM	2014	296154682	450000000	0.658121516
111	CEKA	2014	273735500	297500000	0.920119328
112	CPIN	2014	9106385410	16398000000	0.555335127
113	CTBN	2014	659846300	800371500	0.824425033
114	DLTA	2014	13078143	16013181	0.816711121
115	DPNS	2014	197485917	331129952	0.596400041
116	GDYR	2014	38548000	41000000	0.940195122
117	GGRM	2014	1453589500	1924088000	0.755469344
118	HMSP	2014	4303168205	4383000000	0.981786038
119	ICBP	2014	4695839000	5830954000	0.805329454
120	IGAR	2014	824612420	972204500	0.848188236
121	INAI	2014	213101000	316800000	0.672667298
122	INDF	2014	4396103450	8780426500	0.500670833
123	INDS	2014	578210207	656249710	0.881082610
124	INKP	2014	2884473498	5470982941	0.527231309
125	INTP	2014	2357216097	3681231699	0.640333532
126	IPOL	2014	4140322280	6443379509	0.642569986
127	JPFA	2014	6130699735	10660522910	0.575084336
128	KAEF	2014	5000000000	5554000000	0.900252071
129	KBLI	2014	2339429000	4007235107	0.583801284
130	KIAS	2014	14666550953	14929100000	0.982413605
131	KLBF	2014	26584505085	46875122110	0.567134631
132	LION	2014	30012000	52016000	0.576976315
133	LMSH	2014	3092700	9600000	0.322156250
134	MASA	2014	4001597750	9182946945	0.435764006
135	MERK	2014	19409746	22400000	0.866506518
136	MLBI	2014	1762995000	2107000000	0.836732321
137	MYOR	2014	295717347	894347989	0.330651324
138	PBRX	2014	2992484543	6478295611	0.461924667
139	ROTI	2014	3581223500	5061800000	0.707500000
140	SCCO	2014	138275640	205583400	0.672601193
141	SKBM	2014	762561509	936530894	0.814240634
142	SKLT	2014	663740500	690740500	0.960911515
143	SMCB	2014	6179612820	7662900000	0.806432659
144	SMGR	2014	3025406000	5931520000	0.510055770
145	SMSM	2014	836815927	1439668860	0.581255836

No	Kode	Tahun	KEPEMILIKAN INSTITUSIONAL (KI)		
			Kep. Saham Institusional	Total Saham Beredar	Kepemilikan Institusional
146	TCID	2014	148334763	201066667	0.737739205
147	TKIM	2014	1592352846	2671404480	0.596073286
148	TOTO	2014	953168640	990720000	0.962096899
149	TPIA	2014	3146895311	3286962558	0.957387027
150	TRIS	2014	700000000	1043763025	0.670650314
151	TRST	2014	1676839325	2808000000	0.597165002
152	TSPC	2014	3488616918	4500000000	0.775248204
153	ULTJ	2014	1345697026	2888382000	0.465899949
154	UNIC	2014	302878259	383331363	0.790121259
155	UNVR	2014	6484877500	7630000000	0.849918414
156	ALDO	2015	321230769	550000000	0.584055944
157	AMFG	2015	368117700	434000000	0.848197465
158	ASII	2015	20288255040	40483553140	0.501148083
159	AUTO	2015	3855786337	4819733000	0.799999987
160	BATA	2015	1132413500	1300000000	0.871087308
161	BRAM	2015	296154682	450000000	0.658121516
162	CPIN	2015	9106385410	16398000000	0.555335127
163	CTBN	2015	709846300	800371500	0.886896023
164	DLTA	2015	653907150	800659050	0.816711121
165	DPNS	2015	198235982	331129952	0.598665209
166	GGRM	2015	1453589500	1924088000	0.755469344
167	HMSP	2015	4303768845	4652723076	0.925000000
168	ICBP	2015	4695839000	5830954000	0.805329454
169	INAI	2015	213101000	316800000	0.672667298
170	INDF	2015	4396103450	8780426500	0.500670833
171	INDS	2015	578210207	656249710	0.881082610
172	INKP	2015	2884473498	5470982941	0.527231309
173	INTP	2015	2357216097	3681231699	0.640333532
174	JECC	2015	136303300	151200000	0.901476852
175	KAEF	2015	5000000000	5554000000	0.900252071
176	KBLI	2015	2304962599	4007235107	0.575200241
177	KBLM	2015	924474800	1120000000	0.825423929
178	KLBF	2015	26572005085	46875122110	0.566867965
179	LION	2015	300120000	520160000	0.576976315
180	LMSH	2015	30927000	96000000	0.322156250
181	MERK	2015	388194920	448000000	0.866506518

No	Kode	Tahun	KEPEMILIKAN INSTITUSIONAL (KI)		
			Kep. Saham Institusional	Total Saham Beredar	Kepemilikan Institusional
182	MLBI	2015	1723151000	2107000000	0.817822022
183	MYOR	2015	295717347	894347989	0.330651324
184	PBRX	2015	3342694193	6478295611	0.515983585
185	ROTI	2015	3581223500	5061800000	0.707500000
186	SCCO	2015	146275640	205583400	0.711514840
187	SKBM	2015	753778709	936530894	0.804862620
188	SKLT	2015	663740500	690740500	0.960911515
189	SMCB	2015	6179612820	7662900000	0.806432659
190	SMGR	2015	3025406000	5931520000	0.510055770
191	SMSM	2015	836815927	1439668860	0.581255836
192	TCID	2015	148334763	201066667	0.737739205
193	TKIM	2015	1592352846	2671404522	0.596073276
194	TOTO	2015	953168640	1032000000	0.923613023
195	TPIA	2015	3148234301	3286962558	0.957794391
196	TRIS	2015	700000000	1045446325	0.669570482
197	TRST	2015	1591839325	2808000000	0.566894347
198	TSPC	2015	3517335218	4500000000	0.781630048
199	UNVR	2015	6484877500	7630000000	0.849918414
200	AMFG	2016	368117700	434000000	0.848197465
201	ASII	2016	20288255040	40483553140	0.501148083
202	AUTO	2016	3855786337	4819733000	0.799999987
203	BATA	2016	1132413500	1300000000	0.871087308
204	BRAM	2016	296154682	450000000	0.658121516
205	CPIN	2016	9106385410	16398000000	0.555335127
206	DLTA	2016	653907150	800659050	0.816711121
207	DPNS	2016	198235982	331129952	0.598665209
208	FASW	2016	2125296499	2477888787	0.857704555
209	GGRM	2016	1453589500	1924088000	0.755469344
210	HMSP	2016	1.07594E+11	1.16318E+11	0.925000000
211	ICBP	2016	9391678000	11661908000	0.805329454
212	IGAR	2016	824612420	972204500	0.848188236
213	INAI	2016	213101000	316800000	0.672667298
214	INDF	2016	4396103450	8780426500	0.500670833
215	INKP	2016	2884473498	5470982941	0.527231309
216	INTP	2016	1877480863	3681231699	0.510014315
217	IPOL	2016	4730474380	6443379509	0.734160447

No	Kode	Tahun	KEPEMILIKAN INSTITUSIONAL (KI)		
			Kep. Saham Institusional	Total Saham Beredar	Kepemilikan Institusional
218	JECC	2016	136303300	151200000	0.901476852
219	JPFA	2016	7186031335	11410522910	0.629772307
220	KAEF	2016	5000000000	5554000000	0.900252071
221	KBLI	2016	2345034899	4007235107	0.585200228
222	KBLM	2016	923022700	1120000000	0.824127411
223	KLBF	2016	26488713385	46875122110	0.565091080
224	LION	2016	300120000	520160000	0.576976315
225	LMSH	2016	30927000	96000000	0.322156250
226	MERK	2016	388194920	448000000	0.866506518
227	MLBI	2016	1723151000	2107000000	0.817822022
228	MYOR	2016	13207471425	22358699725	0.590708386
229	PBRX	2016	3099345123	6478295611	0.478419836
230	ROTI	2016	3511223500	5061800000	0.693670927
231	SCCO	2016	146275640	205583400	0.711514840
232	SKLT	2016	577115000	690740500	0.835501900
233	SMGR	2016	3025406000	5931520000	0.510055770
234	SMSM	2016	3347263708	5758675440	0.581255836
235	TCID	2016	148334763	201066667	0.737739205
236	TKIM	2016	1592352846	2671404527	0.596073275
237	TOTO	2016	9531686400	10320000000	0.923613023
238	TPIA	2016	3148234301	3286962558	0.957794391
239	TRIS	2016	700000000	1045446325	0.669570482
240	TRST	2016	1591864325	2808000000	0.566903250
241	TSPC	2016	3528839418	4500000000	0.784186537
242	ULTJ	2016	1071348565	2888382000	0.370916508
243	UNIC	2016	264104845	383331363	0.688972702
244	UNVR	2016	6484877500	7630000000	0.849918414

4. Ukuran Perusahaan (*Size*)

No	Kode	Tahun	UKURAN PERUSAHAAN (SIZE)	
			Total Aset	SIZE
1	AISA	2012	3.86758E+12	28.983649070
2	ALMI	2012	1.88157E+12	28.263126861
3	AMFG	2012	3.11542E+12	28.767385412



No	Kode	Tahun	UKURAN PERUSAHAAN (SIZE)	
			Total Aset	SIZE
4	ASII	2012	1.82274E+14	32.836532165
5	AUTO	2012	8.88164E+12	29.815007566
6	BATA	2012	5.74108E+11	27.076083358
7	BRAM	2012	2.23777E+12	28.436499800
8	BRNA	2012	7.70384E+11	27.370154838
9	CPIN	2012	1.23486E+13	30.144565999
10	CTBN	2012	2.60869E+12	28.589867402
11	DLTA	2012	7.45307E+11	27.337061830
12	GDYR	2012	1.20421E+12	27.816844191
13	GGRM	2012	4.15093E+13	31.356939217
14	HMSP	2012	2.62475E+13	30.898592891
15	ICBP	2012	1.78199E+13	30.511336028
16	IGAR	2012	3.12343E+11	26.467367012
17	IMAS	2012	1.75777E+13	30.497650122
18	INDF	2012	5.93894E+13	31.715136959
19	INDR	2012	6.67542E+12	29.529453551
20	INDS	2012	1.66478E+12	28.140713713
21	INTP	2012	2.27552E+13	30.755813049
22	IPOL	2012	2.74852E+12	28.642084149
23	JECC	2012	7.08955E+11	27.287058154
24	JPFA	2012	1.09615E+13	30.025406965
25	KAEF	2012	2.07635E+12	28.361631495
26	KBLM	2012	7.22941E+11	27.306593921
27	KLBF	2012	9.41796E+12	29.873639321
28	LION	2012	4.33497E+11	26.795150810
29	LMSH	2012	1.28548E+11	25.579565998
30	MAIN	2012	1.79988E+12	28.218741987
31	MASA	2012	6.06875E+12	29.434174416
32	MERK	2012	5.69431E+11	27.067903368
33	MLBI	2012	1.15205E+12	27.772562344
34	MYOR	2012	8.30251E+12	29.747578542
35	PBRX	2012	2.02427E+12	28.336232098
36	ROTI	2012	1.20494E+12	27.817454774
37	SCCO	2012	1.48692E+12	28.027728905
38	SKLT	2012	2.49746E+11	26.243712111
39	SMCB	2012	1.21685E+13	30.129873158
40	SMGR	2012	2.65791E+13	30.911145699

No	Kode	Tahun	UKURAN PERUSAHAAN (SIZE)	
			Total Aset	SIZE
41	SMSM	2012	1.56518E+12	28.079024505
42	TCID	2012	1.26157E+12	27.863380433
43	TKIM	2012	2.60641E+13	30.891579397
44	TOTO	2012	1.52266E+12	28.051482492
45	TRIS	2012	3.85194E+11	26.677011781
46	TRST	2012	2.18813E+12	28.414067975
47	TSPC	2012	4.63298E+12	29.164222478
48	ULTJ	2012	2.42079E+12	28.515116446
49	UNIC	2012	2.41269E+12	28.511765396
50	UNVR	2012	1.1985E+13	30.114675232
51	VOKS	2012	1.69808E+12	28.160518348
52	AISA	2013	5.02578E+12	29.245601384
53	ALMI	2013	2.75208E+12	28.643377462
54	AMFG	2013	3.53939E+12	28.894976359
55	ASII	2013	2.13994E+14	32.996969093
56	AUTO	2013	1.24848E+13	30.155536464
57	BATA	2013	6.80685E+11	27.246365569
58	BRAM	2013	2.9281E+12	28.705374131
59	CPIN	2013	1.57222E+13	30.386094651
60	CTBN	2013	3.35835E+12	28.842471870
61	DLTA	2013	8.67041E+11	27.488351874
62	DPNS	2013	2.56373E+11	26.269897961
63	GDYR	2013	1.36034E+12	27.938755791
64	GGRM	2013	5.07703E+13	31.558331689
65	HMSP	2013	2.74046E+13	30.941731780
66	ICBP	2013	2.12675E+13	30.688199791
67	IGAR	2013	3.14747E+11	26.475033849
68	IMAS	2013	2.2315E+13	30.736281223
69	INAI	2013	7.65881E+11	27.364293177
70	INDF	2013	7.76114E+13	31.982735646
71	INDS	2013	2.19652E+12	28.417894661
72	INTP	2013	2.66072E+13	30.912204513
73	IPOL	2013	3.39948E+12	28.854643143
74	JECC	2013	1.23982E+12	27.845988708
75	JPFA	2013	1.49176E+13	30.333562170
76	KAEF	2013	2.47194E+12	28.536024201
77	KBLI	2013	1.33702E+12	27.921466087

No	Kode	Tahun	UKURAN PERUSAHAAN (SIZE)	
			Total Aset	SIZE
78	KBLM	2013	6.54296E+11	27.206826078
79	KIAS	2013	2.2709E+12	28.451199507
80	KLBF	2013	1.13151E+13	30.057155810
81	LION	2013	4.98568E+11	26.935005620
82	LMSH	2013	1.41698E+11	25.676961037
83	MAIN	2013	2.2144E+12	28.426002012
84	MERK	2013	6.96946E+11	27.269974226
85	MLBI	2013	1.78215E+12	28.208840494
86	MYOR	2013	9.71022E+12	29.904200411
87	ROTI	2013	1.82269E+12	28.231334025
88	SCCO	2013	1.76203E+12	28.197488975
89	SKLT	2013	3.01989E+11	26.433658048
90	SMCB	2013	1.4895E+13	30.332046031
91	SMGR	2013	3.07929E+13	31.058304743
92	SMSM	2013	1.71271E+12	28.169098027
93	TCID	2013	1.46595E+12	28.013526291
94	TKIM	2013	3.19107E+13	31.093962837
95	TOTO	2013	1.74618E+12	28.188450334
96	TPIA	2013	2.33661E+13	30.782308033
97	TRIS	2013	4.75428E+11	26.887481793
98	TRST	2013	3.26092E+12	28.813030328
99	TSPC	2013	5.40796E+12	29.318892673
100	UNIC	2013	3.29856E+12	28.824505929
101	UNVR	2013	1.27035E+13	30.172896143
102	VOKS	2013	1.95583E+12	28.301835936
103	AISA	2014	7.37387E+12	29.628963515
104	ALDO	2014	3.56814E+11	26.600481219
105	ALMI	2014	3.21244E+12	28.798051572
106	AMFG	2014	3.91839E+12	28.996702226
107	ASII	2014	2.36029E+14	33.094975795
108	AUTO	2014	1.43809E+13	30.296923861
109	BATA	2014	7.74891E+11	27.375988324
110	BRAM	2014	3.85434E+12	28.980221533
111	CEKA	2014	1.28415E+12	27.881118166
112	CPIN	2014	2.1083E+13	30.679488334
113	CTBN	2014	3.17509E+12	28.786356735
114	DLTA	2014	9.91947E+11	27.622935650

No	Kode	Tahun	UKURAN PERUSAHAAN (SIZE)	
			Total Aset	SIZE
115	DPNS	2014	2.68877E+11	26.317521064
116	GDYR	2014	1.56898E+12	28.081446275
117	GGRM	2014	5.82206E+13	31.695260360
118	HMSP	2014	2.83806E+13	30.976727986
119	ICBP	2014	2.49102E+13	30.846298916
120	IGAR	2014	3.49895E+11	26.580898328
121	INAI	2014	8.97282E+11	27.522635649
122	INDF	2014	8.60773E+13	32.086266276
123	INDS	2014	2.28267E+12	28.456365208
124	INKP	2014	8.1504E+13	32.031672614
125	INTP	2014	2.8885E+13	30.994342610
126	IPOL	2014	3.56814E+12	28.903065420
127	JPFA	2014	1.57304E+13	30.386618487
128	KAEF	2014	3.19466E+12	28.792503096
129	KBLI	2014	1.33735E+12	27.921712262
130	KIAS	2014	2.20316E+12	28.420912902
131	KLBF	2014	1.2425E+13	30.150734293
132	LION	2014	6.00103E+11	27.120366671
133	LMSH	2014	1.39916E+11	25.664305208
134	MASA	2014	7.8163E+12	29.687231988
135	MERK	2014	7.166E+11	27.297782980
136	MLBI	2014	2.23105E+12	28.433493891
137	MYOR	2014	1.02911E+13	29.962301340
138	PBRX	2014	4.58191E+12	29.153137920
139	ROTI	2014	2.14289E+12	28.393178497
140	SCCO	2014	1.65601E+12	28.135430514
141	SKBM	2014	6.49534E+11	27.199521068
142	SKLT	2014	3.31575E+11	26.527119539
143	SMCB	2014	1.71954E+13	30.475660231
144	SMGR	2014	3.43147E+13	31.166593960
145	SMSM	2014	1.7494E+12	28.190291130
146	TCID	2014	1.85324E+12	28.247954062
147	TKIM	2014	3.38921E+13	31.154203710
148	TOTO	2014	2.02729E+12	28.337720397
149	TPIA	2014	2.40477E+13	30.811061389
150	TRIS	2014	5.24822E+11	26.986325147
151	TRST	2014	3.26129E+12	28.813142557

No	Kode	Tahun	UKURAN PERUSAHAAN (SIZE)	
			Total Aset	SIZE
152	TSPC	2014	5.59273E+12	29.352488744
153	ULTJ	2014	2.91708E+12	28.701605455
154	UNIC	2014	2.95068E+12	28.713056593
155	UNVR	2014	1.42807E+13	30.289927991
156	ALDO	2015	3.66011E+11	26.625928731
157	AMFG	2015	4.27028E+12	29.082699344
158	ASII	2015	2.45435E+14	33.134053262
159	AUTO	2015	1.43391E+13	30.294011885
160	BATA	2015	7.95258E+11	27.401932395
161	BRAM	2015	4.046E+12	29.028748668
162	CPIN	2015	2.49167E+13	30.846557611
163	CTBN	2015	3.08555E+12	28.757749913
164	DLTA	2015	1.03832E+12	27.668626984
165	DPNS	2015	2.74483E+11	26.338155567
166	GGRM	2015	6.35054E+13	31.782146262
167	HMSP	2015	3.80107E+13	31.268889446
168	ICBP	2015	2.65606E+13	30.910450934
169	INAI	2015	1.33026E+12	27.916394999
170	INDF	2015	9.18315E+13	32.150976775
171	INDS	2015	2.55393E+12	28.568653818
172	INKP	2015	9.75805E+13	32.211699245
173	INTP	2015	2.76384E+13	30.950225779
174	JECC	2015	1.35846E+12	27.937375825
175	KAEF	2015	3.43488E+12	28.865002906
176	KBLI	2015	1.5518E+12	28.070436561
177	KBLM	2015	6.54386E+11	27.206962796
178	KLBF	2015	1.36964E+13	30.248155410
179	LION	2015	6.3933E+11	27.183686825
180	LMSH	2015	1.33783E+11	25.619483060
181	MERK	2015	6.41647E+11	27.187303862
182	MLBI	2015	2.10085E+12	28.373364569
183	MYOR	2015	1.13427E+13	30.059596864
184	PBRX	2015	6.13955E+12	29.445772680
185	ROTI	2015	2.70632E+12	28.626612238
186	SCCO	2015	1.77314E+12	28.203775543
187	SKBM	2015	7.64484E+11	27.362467259
188	SKLT	2015	3.77111E+11	26.655804743

No	Kode	Tahun	UKURAN PERUSAHAAN (SIZE)	
			Total Aset	SIZE
189	SMCB	2015	1.73709E+13	30.485816069
190	SMGR	2015	3.81531E+13	31.272628625
191	SMSM	2015	2.22011E+12	28.428576959
192	TCID	2015	2.0821E+12	28.364396602
193	TKIM	2015	3.72092E+13	31.247577569
194	TOTO	2015	2.43954E+12	28.522830965
195	TPIA	2015	2.58201E+13	30.882175130
196	TRIS	2015	5.77786E+11	27.082469995
197	TRST	2015	3.35736E+12	28.842175918
198	TSPC	2015	6.28473E+12	29.469143854
199	UNVR	2015	1.57299E+13	30.386587336
200	AMFG	2016	5.50489E+12	29.336657904
201	ASII	2016	2.61855E+14	33.198812031
202	AUTO	2016	1.46123E+13	30.312882976
203	BATA	2016	8.04743E+11	27.413788706
204	BRAM	2016	3.9977E+12	29.016741528
205	CPIN	2016	2.4205E+13	30.817580091
206	DLTA	2016	1.1978E+12	27.811504860
207	DPNS	2016	2.9613E+11	26.414062918
208	FASW	2016	8.58322E+12	29.780830697
209	GGRM	2016	6.29516E+13	31.773387833
210	HMSP	2016	4.25083E+13	31.380719926
211	ICBP	2016	2.89019E+13	30.994930114
212	IGAR	2016	4.39466E+11	26.808825447
213	INAI	2016	1.33903E+12	27.922968390
214	INDF	2016	8.21745E+13	32.039866333
215	INKP	2016	9.28844E+13	32.162377217
216	INTP	2016	3.01506E+13	31.037225276
217	IPOL	2016	3.81992E+12	28.971251417
218	JECC	2016	1.58721E+12	28.092999237
219	JPFA	2016	1.9251E+13	30.588585474
220	KAEF	2016	4.61256E+12	29.159804684
221	KBLI	2016	1.87142E+12	28.257719908
222	KBLM	2016	6.39091E+11	27.183313265
223	KLBF	2016	1.5226E+13	30.354026214
224	LION	2016	6.85813E+11	27.253870827
225	LMSH	2016	1.62828E+11	25.815961305

No	Kode	Tahun	UKURAN PERUSAHAAN (SIZE)	
			Total Aset	SIZE
226	MERK	2016	7.43935E+11	27.335219360
227	MLBI	2016	2.27504E+12	28.453017871
228	MYOR	2016	1.29224E+13	30.189985047
229	PBRX	2016	7.0149E+12	29.579057556
230	ROTI	2016	2.91964E+12	28.702481731
231	SCCO	2016	2.44994E+12	28.527082810
232	SKLT	2016	5.6824E+11	27.065809596
233	SMGR	2016	4.42269E+13	31.420354226
234	SMSM	2016	2.25474E+12	28.444055783
235	TCID	2016	2.1851E+12	28.412683185
236	TKIM	2016	3.36398E+13	31.146730436
237	TOTO	2016	2.58144E+12	28.579368862
238	TPIA	2016	2.87515E+13	30.989711727
239	TRIS	2016	6.39701E+11	27.184266974
240	TRST	2016	3.2906E+12	28.822089887
241	TSPC	2016	6.58581E+12	29.515938048
242	ULTJ	2016	4.2392E+12	29.075395604
243	UNIC	2016	3.06401E+12	28.750747220
244	UNVR	2016	1.67457E+13	30.449162326

5. *Corporate Social Responsibility (CSR)*

No	Kode	Tahun	CORPORATE SOCIAL RESPONSIBILITY (CSR)		
			CSR yang Diungkapkan	Jumlah Items CSR	CSR
1	AISA	2012	18	91	0.197802198
2	ALMI	2012	9	91	0.098901099
3	AMFG	2012	29	91	0.318681319
4	ASII	2012	31	91	0.340659341
5	AUTO	2012	32	91	0.351648352
6	BATA	2012	6	91	0.065934066
7	BRAM	2012	18	91	0.197802198
8	BRNA	2012	13	91	0.142857143
9	CPIN	2012	9	91	0.098901099
10	CTBN	2012	36	91	0.395604396

No	Kode	Tahun	CORPORATE SOCIAL RESPONSIBILITY (CSR)		
			CSR yang Diungkapkan	Jumlah Items CSR	CSR
11	DLTA	2012	9	91	0.098901099
12	GDYR	2012	22	91	0.241758242
13	GGRM	2012	8	91	0.087912088
14	HMSP	2012	17	91	0.186813187
15	ICBP	2012	27	91	0.296703297
16	IGAR	2012	8	91	0.087912088
17	IMAS	2012	9	91	0.098901099
18	INDF	2012	32	91	0.351648352
19	INDR	2012	19	91	0.208791209
20	INDS	2012	6	91	0.065934066
21	INTP	2012	40	91	0.439560440
22	IPOL	2012	18	91	0.197802198
23	JECC	2012	19	91	0.208791209
24	JPFA	2012	18	91	0.197802198
25	KAEF	2012	19	91	0.208791209
26	KBLM	2012	12	91	0.131868132
27	KLBF	2012	29	91	0.318681319
28	LION	2012	13	91	0.142857143
29	LMSH	2012	10	91	0.109890110
30	MAIN	2012	11	91	0.120879121
31	MASA	2012	20	91	0.219780220
32	MERK	2012	15	91	0.164835165
33	MLBI	2012	4	91	0.043956044
34	MYOR	2012	12	91	0.131868132
35	PBRX	2012	16	91	0.175824176
36	ROTI	2012	14	91	0.153846154
37	SCCO	2012	10	91	0.109890110
38	SKLT	2012	5	91	0.054945055
39	SMCB	2012	53	91	0.582417582
40	SMGR	2012	26	91	0.285714286
41	SMSM	2012	18	91	0.197802198
42	TCID	2012	28	91	0.307692308
43	TKIM	2012	47	91	0.516483516
44	TOTO	2012	18	91	0.197802198
45	TRIS	2012	11	91	0.120879121



No	Kode	Tahun	CORPORATE SOCIAL RESPONSIBILITY (CSR)		
			CSR yang Diungkapkan	Jumlah Items CSR	CSR
46	TRST	2012	9	91	0.098901099
47	TSPC	2012	5	91	0.054945055
48	ULTJ	2012	11	91	0.120879121
49	UNIC	2012	33	91	0.362637363
50	UNVR	2012	33	91	0.362637363
51	VOKS	2012	25	91	0.274725275
52	AISA	2013	30	91	0.329670330
53	ALMI	2013	15	91	0.164835165
54	AMFG	2013	28	91	0.307692308
55	ASII	2013	33	91	0.362637363
56	AUTO	2013	32	91	0.351648352
57	BATA	2013	7	91	0.076923077
58	BRAM	2013	20	91	0.219780220
59	CPIN	2013	12	91	0.131868132
60	CTBN	2013	40	91	0.439560440
61	DLTA	2013	9	91	0.098901099
62	DPNS	2013	16	91	0.175824176
63	GDYR	2013	23	91	0.252747253
64	GGRM	2013	12	91	0.131868132
65	HMSP	2013	15	91	0.164835165
66	ICBP	2013	29	91	0.318681319
67	IGAR	2013	23	91	0.252747253
68	IMAS	2013	14	91	0.153846154
69	INAI	2013	10	91	0.109890110
70	INDF	2013	34	91	0.373626374
71	INDS	2013	6	91	0.065934066
72	INTP	2013	44	91	0.483516484
73	IPOL	2013	18	91	0.197802198
74	JECC	2013	20	91	0.219780220
75	JPFA	2013	18	91	0.197802198
76	KAEF	2013	23	91	0.252747253
77	KBLI	2013	26	91	0.285714286
78	KBLM	2013	16	91	0.175824176
79	KIAS	2013	12	91	0.131868132
80	KLBF	2013	31	91	0.340659341

No	Kode	Tahun	CORPORATE SOCIAL RESPONSIBILITY (CSR)		
			CSR yang Diungkapkan	Jumlah Items CSR	CSR
81	LION	2013	13	91	0.142857143
82	LMSH	2013	11	91	0.120879121
83	MAIN	2013	16	91	0.175824176
84	MERK	2013	15	91	0.164835165
85	MLBI	2013	12	91	0.131868132
86	MYOR	2013	14	91	0.153846154
87	ROTI	2013	19	91	0.208791209
88	SCCO	2013	13	91	0.142857143
89	SKLT	2013	6	91	0.065934066
90	SMCB	2013	55	91	0.604395604
91	SMGR	2013	33	91	0.362637363
92	SMSM	2013	17	91	0.186813187
93	TCID	2013	28	91	0.307692308
94	TKIM	2013	48	91	0.527472527
95	TOTO	2013	23	91	0.252747253
96	TPIA	2013	44	91	0.483516484
97	TRIS	2013	16	91	0.175824176
98	TRST	2013	10	91	0.109890110
99	TSPC	2013	4	91	0.043956044
100	UNIC	2013	35	91	0.384615385
101	UNVR	2013	37	91	0.406593407
102	VOKS	2013	27	91	0.296703297
103	AISA	2014	26	91	0.285714286
104	ALDO	2014	21	91	0.230769231
105	ALMI	2014	16	91	0.175824176
106	AMFG	2014	33	91	0.362637363
107	ASII	2014	35	91	0.384615385
108	AUTO	2014	37	91	0.406593407
109	BATA	2014	6	91	0.065934066
110	BRAM	2014	26	91	0.285714286
111	CEKA	2014	9	91	0.098901099
112	CPIN	2014	12	91	0.131868132
113	CTBN	2014	45	91	0.494505495
114	DLTA	2014	16	91	0.175824176
115	DPNS	2014	19	91	0.208791209

No	Kode	Tahun	CORPORATE SOCIAL RESPONSIBILITY (CSR)		
			CSR yang Diungkapkan	Jumlah Items CSR	CSR
116	GDYR	2014	23	91	0.252747253
117	GGRM	2014	11	91	0.120879121
118	HMSP	2014	12	91	0.131868132
119	ICBP	2014	30	91	0.329670330
120	IGAR	2014	28	91	0.307692308
121	INAI	2014	10	91	0.109890110
122	INDF	2014	37	91	0.406593407
123	INDS	2014	13	91	0.142857143
124	INKP	2014	32	91	0.351648352
125	INTP	2014	46	91	0.505494505
126	IPOL	2014	32	91	0.351648352
127	JPFA	2014	23	91	0.252747253
128	KAEF	2014	24	91	0.263736264
129	KBLI	2014	28	91	0.307692308
130	KIAS	2014	15	91	0.164835165
131	KLBF	2014	30	91	0.329670330
132	LION	2014	13	91	0.142857143
133	LMSH	2014	14	91	0.153846154
134	MASA	2014	23	91	0.252747253
135	MERK	2014	18	91	0.197802198
136	MLBI	2014	26	91	0.285714286
137	MYOR	2014	19	91	0.208791209
138	PBRX	2014	21	91	0.230769231
139	ROTI	2014	21	91	0.230769231
140	SCCO	2014	14	91	0.153846154
141	SKBM	2014	13	91	0.142857143
142	SKLT	2014	7	91	0.076923077
143	SMCB	2014	55	91	0.604395604
144	SMGR	2014	34	91	0.373626374
145	SMSM	2014	18	91	0.197802198
146	TCID	2014	34	91	0.373626374
147	TKIM	2014	49	91	0.538461538
148	TOTO	2014	29	91	0.318681319
149	TPIA	2014	46	91	0.505494505
150	TRIS	2014	18	91	0.197802198

No	Kode	Tahun	CORPORATE SOCIAL RESPONSIBILITY (CSR)		
			CSR yang Diungkapkan	Jumlah Items CSR	CSR
151	TRST	2014	10	91	0.109890110
152	TSPC	2014	5	91	0.054945055
153	ULTJ	2014	16	91	0.175824176
154	UNIC	2014	32	91	0.351648352
155	UNVR	2014	40	91	0.439560440
156	ALDO	2015	19	91	0.208791209
157	AMFG	2015	35	91	0.384615385
158	ASII	2015	37	91	0.406593407
159	AUTO	2015	31	91	0.340659341
160	BATA	2015	6	91	0.065934066
161	BRAM	2015	32	91	0.351648352
162	CPIN	2015	12	91	0.131868132
163	CTBN	2015	39	91	0.428571429
164	DLTA	2015	23	91	0.252747253
165	DPNS	2015	19	91	0.208791209
166	GGRM	2015	10	91	0.109890110
167	HMSP	2015	24	91	0.263736264
168	ICBP	2015	32	91	0.351648352
169	INAI	2015	20	91	0.219780220
170	INDF	2015	44	91	0.483516484
171	INDS	2015	17	91	0.186813187
172	INKP	2015	35	91	0.384615385
173	INTP	2015	48	91	0.527472527
174	JECC	2015	22	91	0.241758242
175	KAEF	2015	29	91	0.318681319
176	KBLI	2015	29	91	0.318681319
177	KBLM	2015	25	91	0.274725275
178	KLBF	2015	32	91	0.351648352
179	LION	2015	15	91	0.164835165
180	LMSH	2015	16	91	0.175824176
181	MERK	2015	21	91	0.230769231
182	MLBI	2015	26	91	0.285714286
183	MYOR	2015	21	91	0.230769231
184	PBRX	2015	21	91	0.230769231
185	ROTI	2015	21	91	0.230769231

No	Kode	Tahun	CORPORATE SOCIAL RESPONSIBILITY (CSR)		
			CSR yang Diungkapkan	Jumlah Items CSR	CSR
186	SCCO	2015	14	91	0.153846154
187	SKBM	2015	14	91	0.153846154
188	SKLT	2015	13	91	0.142857143
189	SMCB	2015	41	91	0.450549451
190	SMGR	2015	40	91	0.439560440
191	SMSM	2015	17	91	0.186813187
192	TCID	2015	35	91	0.384615385
193	TKIM	2015	49	91	0.538461538
194	TOTO	2015	29	91	0.318681319
195	TPIA	2015	43	91	0.472527473
196	TRIS	2015	18	91	0.197802198
197	TRST	2015	10	91	0.109890110
198	TSPC	2015	5	91	0.054945055
199	UNVR	2015	44	91	0.483516484
200	AMFG	2016	39	91	0.428571429
201	ASII	2016	32	91	0.351648352
202	AUTO	2016	33	91	0.362637363
203	BATA	2016	8	91	0.087912088
204	BRAM	2016	32	91	0.351648352
205	CPIN	2016	19	91	0.208791209
206	DLTA	2016	27	91	0.296703297
207	DPNS	2016	21	91	0.230769231
208	FASW	2016	36	91	0.395604396
209	GGRM	2016	19	91	0.208791209
210	HMSP	2016	30	91	0.329670330
211	ICBP	2016	32	91	0.351648352
212	IGAR	2016	26	91	0.285714286
213	INAI	2016	20	91	0.219780220
214	INDF	2016	46	91	0.505494505
215	INKP	2016	37	91	0.406593407
216	INTP	2016	49	91	0.538461538
217	IPOL	2016	40	91	0.439560440
218	JECC	2016	26	91	0.285714286
219	JPFA	2016	29	91	0.318681319
220	KAEF	2016	28	91	0.307692308

No	Kode	Tahun	CORPORATE SOCIAL RESPONSIBILITY (CSR)		
			CSR yang Diungkapkan	Jumlah Items CSR	CSR
221	KBLI	2016	31	91	0.340659341
222	KBLM	2016	25	91	0.274725275
223	KLBF	2016	33	91	0.362637363
224	LION	2016	14	91	0.153846154
225	LMSH	2016	17	91	0.186813187
226	MERK	2016	22	91	0.241758242
227	MLBI	2016	29	91	0.318681319
228	MYOR	2016	23	91	0.252747253
229	PBRX	2016	21	91	0.230769231
230	ROTI	2016	21	91	0.230769231
231	SCCO	2016	17	91	0.186813187
232	SKLT	2016	16	91	0.175824176
233	SMGR	2016	40	91	0.439560440
234	SMSM	2016	21	91	0.230769231
235	TCID	2016	35	91	0.384615385
236	TKIM	2016	50	91	0.549450549
237	TOTO	2016	30	91	0.329670330
238	TPIA	2016	45	91	0.494505495
239	TRIS	2016	19	91	0.208791209
240	TRST	2016	10	91	0.109890110
241	TSPC	2016	5	91	0.054945055
242	ULTJ	2016	16	91	0.175824176
243	UNIC	2016	37	91	0.406593407
244	UNVR	2016	48	91	0.527472527

6. Nilai Perusahaan (*Price to Book Value*)

No	Kode	Tahun	NILAI PERUSAHAAN (PBV)		
			Harga Pasar Saham per Lembar	Book Value	PBV
1	AISA	2012	1080	694.9600	1.554046245
2	ALMI	2012	650	1908.7111	0.340543940
3	AMFG	2012	8300	5661.4954	1.466043762
4	ASII	2012	7600	2218.5306	3.425690915

No	Kode	Tahun	NILAI PERUSAHAAN (PBV)		
			Harga Pasar Saham per Lembar	Book Value	PBV
5	AUTO	2012	3700	1403.2191	2.636794271
6	BATA	2012	60000	29806.8066	2.012963038
7	BRAM	2012	3000	3663.1070	0.818976905
8	BRNA	2012	700	437.4347	1.600238905
9	CPIN	2012	3650	498.6257	7.320120287
10	CTBN	2012	4400	1732.3356	2.539923522
11	DLTA	2012	255000	37357.4440	6.825948793
12	GDYR	2012	12300	12498.3653	0.984128700
13	GGRM	2012	56300	13827.7007	4.071537357
14	HMSP	2012	59900	3036.3723	19.727488312
15	ICBP	2012	7800	2055.3002	3.795066020
16	IGAR	2012	375	230.5037	1.626872153
17	IMAS	2012	5300	2064.3292	2.567419919
18	INDF	2012	5850	3888.2208	1.504544184
19	INDR	2012	1420	4361.8844	0.325547371
20	INDS	2012	4200	3608.1678	1.164025681
21	INTP	2012	22450	5275.0654	4.255871398
22	IPOL	2012	106	212.7839	0.498157923
23	JECC	2012	6150	944.9457	6.508310334
24	JPFA	2012	1900	2234.0963	0.850455723
25	KAEF	2012	740	259.5487	2.851102287
26	KBLM	2012	135	236.3804	0.571113306
27	KLBF	2012	1060	145.1680	7.301882626
28	LION	2012	10400	7148.3656	1.454878014
29	LMSH	2012	10500	10158.8745	1.033579064
30	MAIN	2012	2375	402.2835	5.903796601
31	MASA	2012	450	393.6569	1.143127368
32	MERK	2012	152000	18604.5475	8.170045503
33	MLBI	2012	740000	15655.1020	47.268934950
34	MYOR	2012	20000	4001.9754	4.997531941
35	PBRX	2012	470	278.2795	1.688949403
36	ROTI	2012	6900	658.4689	10.478854465
37	SCCO	2012	4050	3181.4080	1.273021270
38	SKLT	2012	180	187.4547	0.960231935
39	SMCB	2012	2900	1098.5470	2.639850578

No	Kode	Tahun	NILAI PERUSAHAAN (PBV)		
			Harga Pasar Saham per Lembar	Book Value	PBV
40	SMGR	2012	15850	3062.4283	5.175631395
41	SMSM	2012	2525	637.7508	3.959226566
42	TCID	2012	11000	5455.0145	2.016493280
43	TKIM	2012	1980	5633.3894	0.351475794
44	TOTO	2012	6650	1813.1559	3.667638312
45	TRIS	2012	340	256.6007	1.325015741
46	TRST	2012	345	481.8349	0.716012860
47	TSPC	2012	3725	745.1458	4.999021698
48	ULTJ	2012	1330	580.4354	2.291383396
49	UNIC	2012	2000	3542.4864	0.564575210
50	UNVR	2012	20850	520.1003	40.088424326
51	VOKS	2012	1030	725.6060	1.419503105
52	AISA	2013	1430	806.2645	1.773611458
53	ALMI	2013	600	2134.2258	0.281132386
54	AMFG	2013	7000	6361.1221	1.100434777
55	ASII	2013	6800	2622.9911	2.592460178
56	AUTO	2013	3650	1955.6932	1.866345918
57	BATA	2013	1060	305.2717	3.472317022
58	BRAM	2013	2250	4433.4451	0.507506001
59	CPIN	2013	3375	606.8362	5.561632616
60	CTBN	2013	4500	2309.6306	1.948363542
61	DLTA	2013	380000	42250.0684	8.994068273
62	DPNS	2013	470	674.7440	0.696560422
63	GDYR	2013	19000	16799.2036	1.131005995
64	GGRM	2013	42000	15288.4229	2.747176758
65	HMSP	2013	62400	3229.5311	19.321690127
66	ICBP	2013	10200	2275.0533	4.483411491
67	IGAR	2013	295	232.1968	1.270474006
68	IMAS	2013	4900	2408.3904	2.034553827
69	INAI	2013	600	797.4609	0.752388006
70	INDF	2013	6600	4315.4801	1.529377918
71	INDS	2013	2675	3338.7916	0.801188059
72	INTP	2013	20000	6241.8475	3.204179515
73	IPOL	2013	107	287.7197	0.371889769
74	JECC	2013	1220	976.5896	1.249245363



No	Kode	Tahun	NILAI PERUSAHAAN (PBV)		
			Harga Pasar Saham per Lembar	Book Value	PBV
75	JPFA	2013	2850	492.0230	5.792412655
76	KAEF	2013	590	292.4657	2.017330342
77	KBLI	2013	142	221.2622	0.641772489
78	KBLM	2013	158	240.7716	0.656223653
79	KIAS	2013	155	137.1215	1.130384381
80	KLBF	2013	1250	181.3320	6.893434400
81	LION	2013	12000	7993.3931	1.501239809
82	LMSH	2013	8000	11507.0932	0.695223362
83	MAIN	2013	3175	508.8396	6.239686835
84	MERK	2013	189000	22866.9028	8.265220783
85	MLBI	2013	1200000	46869.1505	25.603195032
86	MYOR	2013	26000	4353.8982	5.971660033
87	ROTI	2013	1020	155.5450	6.557588097
88	SCCO	2013	4400	3441.9663	1.278339080
89	SKLT	2013	180	202.1748	0.890318476
90	SMCB	2013	2275	1144.8599	1.987142690
91	SMGR	2013	14150	3675.9508	3.849344197
92	SMSM	2013	3450	706.2409	4.885018846
93	TCID	2013	11900	5883.5744	2.022580023
94	TKIM	2013	1800	7321.0525	0.245866287
95	TOTO	2013	7700	2090.7025	3.682972507
96	TPIA	2013	2975	3187.6563	0.933287583
97	TRIS	2013	400	301.8464	1.325177189
98	TRST	2013	250	608.8594	0.410603841
99	TSPC	2013	3250	858.4337	3.785964866
100	UNIC	2013	1910	4647.4874	0.410974753
101	UNVR	2013	26000	533.1398	48.767692670
102	VOKS	2013	740	723.4198	1.022919231
103	AISA	2014	2095	1114.1291	1.880392455
104	ALDO	2014	735	289.8594	2.535712355
105	ALMI	2014	268	1040.6425	0.257533207
106	AMFG	2014	8050	7337.8848	1.097046387
107	ASII	2014	7425	2972.1699	2.498174779
108	AUTO	2014	4200	2103.1366	1.997017192
109	BATA	2014	1105	330.0889	3.347582757

No	Kode	Tahun	NILAI PERUSAHAAN (PBV)		
			Harga Pasar Saham per Lembar	Book Value	PBV
110	BRAM	2014	5000	4963.3137	1.007391488
111	CEKA	2014	1500	1806.8947	0.830153524
112	CPIN	2014	3780	685.4734	5.514437084
113	CTBN	2014	5300	2173.3437	2.438638723
114	DLTA	2014	390000	47740.2493	8.169207445
115	DPNS	2014	353	712.9603	0.495118707
116	GDYR	2014	16000	17654.5200	0.906283490
117	GGRM	2014	60700	17269.8546	3.514795081
118	HMSP	2014	68650	3079.6518	22.291480869
119	ICBP	2014	13100	2579.3287	5.078840863
120	IGAR	2014	315	270.9833	1.162433065
121	INAI	2014	350	460.3602	0.760274276
122	INDF	2014	6750	4586.8157	1.471609165
123	INDS	2014	1600	2786.0105	0.574297917
124	INKP	2014	1045	5503.4839	0.189879722
125	INTP	2014	25000	6732.7468	3.713194731
126	IPOL	2014	116	300.3774	0.386180856
127	JPFA	2014	2350	496.2228	4.735776418
128	KAEF	2014	1465	342.6295	4.275755189
129	KBLI	2014	139	234.7645	0.592082596
130	KIAS	2014	147	130.7796	1.124028361
131	KLBF	2014	1830	209.4389	8.737630351
132	LION	2014	9300	8535.4306	1.089575964
133	LMSH	2014	6450	12078.2510	0.534017714
134	MASA	2014	420	510.3682	0.822935342
135	MERK	2014	160000	24718.3418	6.472926112
136	MLBI	2014	11950	262.8367	45.465486451
137	MYOR	2014	20900	4584.9659	4.558376367
138	PBRX	2014	505	394.8936	1.278825379
139	ROTI	2014	1385	189.6800	7.301770410
140	SCCO	2014	3950	3961.3730	0.997129038
141	SKBM	2014	970	339.4547	2.857524476
142	SKLT	2014	300	222.0343	1.351142389
143	SMCB	2014	2185	1142.9866	1.911658461
144	SMGR	2014	16200	4215.1846	3.843248024

No	Kode	Tahun	NILAI PERUSAHAAN (PBV)		
			Harga Pasar Saham per Lembar	Book Value	PBV
145	SMSM	2014	4750	796.5978	5.962858789
146	TCID	2014	17525	6383.4770	2.745369025
147	TKIM	2014	850	4358.4565	0.195023171
148	TOTO	2014	3975	1242.7248	3.198616437
149	TPIA	2014	3000	3306.1948	0.907387552
150	TRIS	2014	356	297.4087	1.197005878
151	TRST	2014	380	627.3124	0.605758802
152	TSPC	2014	2865	918.2976	3.119903765
153	ULTJ	2014	3720	784.2099	4.743627949
154	UNIC	2014	1600	4680.3492	0.341854834
155	UNVR	2014	32300	622.0857	51.922105360
156	ALDO	2015	735	310.7800	2.365016683
157	AMFG	2015	6550	7811.5737	0.838499414
158	ASII	2015	6000	3125.5409	1.919667745
159	AUTO	2015	1600	2104.5618	0.760253271
160	BATA	2015	900	420.9132	2.138207880
161	BRAM	2015	4680	5635.9865	0.830378137
162	CPIN	2015	2600	779.7697	3.334317953
163	CTBN	2015	5225	2186.2317	2.389957101
164	DLTA	2015	5200	1061.1527	4.900331681
165	DPNS	2015	387	728.7051	0.531079046
166	GGRM	2015	55000	19753.7270	2.784284713
167	HMSP	2015	94000	6881.1445	13.660518163
168	ICBP	2015	13475	2810.3310	4.794808805
169	INAI	2015	405	757.0104	0.534999237
170	INDF	2015	5175	4911.1046	1.053734428
171	INDS	2015	350	2924.2511	0.119688765
172	INKP	2015	955	6647.1765	0.143670024
173	INTP	2015	22325	6483.1426	3.443546043
174	JECC	2015	635	2432.2504	0.261075094
175	KAEF	2015	870	370.2844	2.349545282
176	KBLI	2015	119	256.3768	0.464160646
177	KBLM	2015	132	264.7102	0.498658607
178	KLBF	2015	1320	233.3495	5.656751091
179	LION	2015	1050	873.9609	1.201426760

No	Kode	Tahun	NILAI PERUSAHAAN (PBV)		
			Harga Pasar Saham per Lembar	Book Value	PBV
180	LMSH	2015	575	1171.2643	0.490922482
181	MERK	2015	6775	1057.0163	6.409551387
182	MLBI	2015	8200	363.7779	22.541227429
183	MYOR	2015	30500	5808.0971	5.251289652
184	PBRX	2015	560	461.9485	1.212256441
185	ROTI	2015	1265	234.8048	5.387453680
186	SCCO	2015	3725	4486.5125	0.830266261
187	SKBM	2015	945	367.4064	2.572083700
188	SKLT	2015	370	220.1184	1.680913827
189	SMCB	2015	995	1102.6970	0.902333081
190	SMGR	2015	11400	4626.2675	2.464189526
191	SMSM	2015	4760	1000.4023	4.758085950
192	TCID	2015	16500	8528.8701	1.934605624
193	TKIM	2015	495	4962.0466	0.099757224
194	TOTO	2015	6950	1445.2935	4.808711776
195	TPIA	2015	3445	3740.6063	0.920973687
196	TRIS	2015	300	323.1260	0.928430496
197	TRST	2015	310	696.9091	0.444821297
198	TSPC	2015	1750	963.8091	1.815712250
199	UNVR	2015	37000	632.6815	58.481240264
200	AMFG	2016	6700	8293.2350	0.807887390
201	ASII	2016	8275	3455.8725	2.394474878
202	AUTO	2016	2050	2186.1290	0.937730581
203	BATA	2016	790	428.5810	1.843292236
204	BRAM	2016	6675	5933.6578	1.124938483
205	CPIN	2016	3090	863.3518	3.579073976
206	DLTA	2016	5000	1264.4259	3.954363919
207	DPNS	2016	400	795.0486	0.503113900
208	FASW	2016	4100	1274.6506	3.216567706
209	GGRM	2016	63900	20562.5876	3.107585549
210	HMSP	2016	3830	293.8066	13.035787916
211	ICBP	2016	8575	1586.4319	5.405211492
212	IGAR	2016	520	384.4346	1.352635838
213	INAI	2016	645	814.4463	0.791949037
214	INDF	2016	7925	5004.4748	1.583582762

No	Kode	Tahun	NILAI PERUSAHAAN (PBV)		
			Harga Pasar Saham per Lembar	Book Value	PBV
215	INKP	2016	955	6958.5611	0.137241016
216	INTP	2016	15400	7100.5319	2.168851613
217	IPOL	2016	136	326.8271	0.416122202
218	JECC	2016	1455	3110.7033	0.467739881
219	JPFA	2016	3500	821.4316	4.260853897
220	KAEF	2016	2750	408.9678	6.724245038
221	KBLI	2016	276	329.7400	0.837023023
222	KBLM	2016	240	286.2994	0.838283412
223	KLBF	2016	1515	265.8947	5.697743978
224	LION	2016	1050	904.7276	1.160570357
225	LMSH	2016	590	1222.0466	0.482796665
226	MERK	2016	9200	1300.6082	7.073613770
227	MLBI	2016	11750	389.4827	30.168222363
228	MYOR	2016	1645	280.2156	5.870480172
229	PBRX	2016	460	474.4813	0.969479816
230	ROTI	2016	1600	285.0274	5.613495098
231	SCCO	2016	7275	5936.3775	1.225494838
232	SKLT	2016	308	428.7447	0.718376306
233	SMGR	2016	9175	5154.5627	1.779976425
234	SMSM	2016	980	274.3782	3.571712334
235	TCID	2016	12500	8868.4939	1.409483973
236	TKIM	2016	730	4736.5961	0.154119116
237	TOTO	2016	498	147.6623	3.372561149
238	TPIA	2016	20650	4690.0270	4.402959767
239	TRIS	2016	336	331.5590	1.013394174
240	TRST	2016	300	688.1607	0.435944699
241	TSPC	2016	1970	1030.0607	1.912508654
242	ULTJ	2016	4570	1208.0236	3.783038813
243	UNIC	2016	2370	5677.9209	0.417406306
244	UNVR	2016	38800	616.5476	62.931072233

**Lampiran 3**

## Tabulasi Perhitungan Data Penelitian 2012-2016

No	Kode	Tahun	DPR	ROA	KI	SIZE	CSR	PBV
1	AISA	2012	0.090052646	0.065587334	0.534734812	28.98364907	0.197802198	1.554046245
2	ALMI	2012	1.103996467	0.007413571	0.838426948	28.26312686	0.098901099	0.34054394
3	AMFG	2012	0.100125156	0.111255911	0.847044931	28.76738541	0.318681319	1.466043762
4	ASII	2012	0.45	0.124768206	0.501148083	32.83653217	0.340659341	3.425690915
5	AUTO	2012	0.329545455	0.127894594	0.956537185	29.81500757	0.351648352	2.636794271
6	BATA	2012	0.523997	0.120784589	0.877890846	27.07608336	0.065934066	2.012963038
7	BRAM	2012	0.482783392	0.097912364	0.658121516	28.4364998	0.197802198	0.818976905
8	BRNA	2012	0.319444444	0.070739131	0.51423913	27.37015484	0.142857143	1.600238905
9	CPIN	2012	0.256097561	0.217098792	0.555335127	30.144566	0.098901099	7.320120287
10	CTBN	2012	1.048951049	0.127832657	0.809267875	28.5898674	0.395604396	2.539923522
11	DLTA	2012	0.846349157	0.286353307	0.816711121	27.33706183	0.098901099	6.825948793
12	GDYR	2012	0.167215476	0.053859332	0.940707317	27.81684419	0.241758242	0.9841287
13	GGRM	2012	0.479386385	0.098019204	0.755469344	31.35693922	0.087912088	4.071537357
14	HMSP	2012	0.771264874	0.378904115	0.981786038	30.89859289	0.186813187	19.72748831
15	ICBP	2012	0.451871658	0.128080014	0.805329454	30.51133603	0.296703297	3.79506602
16	IGAR	2012	0.710227273	0.142496344	0.785345162	26.46736701	0.087912088	1.626872153
17	IMAS	2012	0.406994792	0.051149623	0.704000418	30.49765012	0.098901099	2.567419919
18	INDF	2012	0.64116095	0.080476408	0.500670833	31.71513696	0.351648352	1.504544184
19	INDR	2012	2.263840296	0.000630649	0.591808212	29.52945355	0.208791209	0.325547371
20	INDS	2012	0.270306798	0.080532163	0.881082222	28.14071371	0.065934066	1.164025681
21	INTP	2012	0.22657851	0.209332213	0.640333532	30.75581305	0.439560440	4.255871398

No	Kode	Tahun	DPR	ROA	KI	SIZE	CSR	PBV
22	IPOL	2012	0.09354712	0.026481269	0.64285561	28.64208415	0.197802198	0.498157923
23	JECC	2012	0.519578669	0.04481351	0.901476852	27.28705815	0.208791209	6.508310334
24	JPFA	2012	0.79787234	0.098032252	0.575084336	30.02540697	0.197802198	0.850455723
25	KAEF	2012	0.167885188	0.099099014	0.900252071	28.3616315	0.208791209	2.851102287
26	KBLM	2012	0.142857143	0.032966822	0.747126696	27.30659392	0.131868132	0.571113306
27	KLBF	2012	2.567567568	0.188480242	0.522826258	29.87363932	0.318681319	7.301882626
28	LION	2012	0.182815356	0.196941878	0.576976315	26.79515081	0.142857143	1.454878014
29	LMSH	2012	0.023255814	0.321145459	0.32215625	25.579566	0.109890110	1.033579064
30	MAIN	2012	0.139664804	0.168022738	0.590958702	28.21874199	0.120879121	5.903796601
31	MASA	2012	0.068601221	0.000512016	0.477296888	29.43417442	0.219780220	1.143127368
32	MERK	2012	1.718263038	0.189326124	0.866506518	27.06790337	0.164835165	8.170045503
33	MYOR	2012	0.159313725	0.089663095	0.330651321	29.74757854	0.131868132	4.997531941
34	PBRX	2012	0.042875763	0.033282626	0.54084503	28.3362321	0.175824176	1.688949403
35	ROTI	2012	0.971496437	0.123781241	0.7575	27.81745477	0.153846154	10.47885447
36	SCCO	2012	0.20631068	0.114156439	0.672601193	28.0277289	0.109890110	1.27302127
37	SKLT	2012	0.173460538	0.031883109	0.960911515	26.24371211	0.054945055	0.960231935
38	SMCB	2012	0.210227273	0.111007036	0.806432659	30.12987316	0.582417582	2.639850578
39	SMGR	2012	0.40500612	0.185357776	0.51005577	30.9111457	0.285714286	5.175631395
40	SMSM	2012	0.197368421	0.162687201	0.581255836	28.0790245	0.197802198	3.959226566
41	TCID	2012	0.494652406	0.119195526	0.737739205	27.86338043	0.307692308	2.01649328
42	TKIM	2012	0.098944069	0.012981527	0.596073286	30.8915794	0.516483516	0.351475794
43	TOTO	2012	0.210084034	0.154955825	0.962096899	28.05148249	0.197802198	3.667638312
44	TRIS	2012	0.071890726	0.115248644	0.7	26.67701178	0.120879121	1.325015741
45	TRST	2012	0.909090909	0.028084751	0.603464503	28.41406797	0.098901099	0.71601286

No	Kode	Tahun	DPR	ROA	KI	SIZE	CSR	PBV
46	TSPC	2012	0.535714286	0.137098673	0.772855737	29.16422248	0.054945055	4.999021698
47	ULTJ	2012	0.081967213	0.145998259	0.465899949	28.51511645	0.120879121	2.291383396
48	UNIC	2012	1.157645606	0.006600199	0.762236063	28.5117654	0.362637363	0.56457521
49	VOKS	2012	0.27158538	0.08658056	0.486544409	28.16051835	0.274725275	1.419503105
50	AISA	2013	0.075414781	0.068989916	0.557097879	29.24560138	0.329670330	1.773611458
51	ALMI	2013	0.235849057	0.009490549	0.759778841	28.64337746	0.164835165	0.281132386
52	AMFG	2013	0.102564103	0.095597748	0.847044931	28.89497636	0.307692308	1.100434777
53	ASII	2013	0.133333333	0.10419451	0.501148083	32.99696909	0.362637363	2.592460178
54	AUTO	2013	0.376126126	0.08007838	0.799999987	30.15553646	0.351648352	1.866345918
55	BATA	2013	0.789041899	0.065189735	0.870536462	27.24636557	0.076923077	3.472317022
56	BRAM	2013	1.810871638	0.023186659	0.658121516	28.70537413	0.219780220	0.507506001
57	CPIN	2013	0.298701299	0.160835664	0.555335127	30.38609465	0.131868132	5.561632616
58	CTBN	2013	0.794979079	0.139571025	0.824425033	28.84247187	0.439560440	1.948363542
59	DLTA	2013	0.696336664	0.311978469	0.816711121	27.48835187	0.098901099	8.994068273
60	DPNS	2013	0.08580254	0.260609801	0.664673943	26.26989796	0.175824176	0.696560422
61	GDYR	2013	0.204081633	0.041733162	0.940195122	27.93875579	0.252747253	1.131005995
62	GGRM	2013	0.355555556	0.086348441	0.755469344	31.55833169	0.131868132	2.747176758
63	HMSP	2013	0.919367909	0.394769067	0.981786038	30.94173178	0.164835165	19.32169013
64	ICBP	2013	0.486910995	0.105091955	0.805329454	30.68819979	0.318681319	4.483411491
65	IGAR	2013	2.958579882	0.111297187	0.848188236	26.47503385	0.252747253	1.270474006
66	IMAS	2013	0.150610231	0.02783505	0.895375747	30.73628122	0.153846154	2.034553827
67	INAI	2013	1.57778479	0.00655394	0.658636364	27.36429318	0.109890110	0.752388006
68	INDF	2013	0.822222222	0.044022325	0.500670833	31.98273565	0.373626374	1.529377918
69	INDS	2013	1.358967757	0.067201099	0.881082221	28.41789466	0.065934066	0.801188059



No	Kode	Tahun	DPR	ROA	KI	SIZE	CSR	PBV
70	INTP	2013	0.330634377	0.188380825	0.640333532	30.91220451	0.483516484	3.204179515
71	IPOL	2013	0.058309038	0.034245603	0.642569986	28.85464314	0.197802198	0.371889769
72	JECC	2013	0.791347929	0.018190963	0.901476852	27.84598871	0.219780220	1.249245363
73	JPFA	2013	0.357142857	0.042945074	0.575084336	30.33356217	0.197802198	5.792412655
74	KAEF	2013	0.142376391	0.087236086	0.900252071	28.5360242	0.252747253	2.017330342
75	KBLI	2013	0.435967302	0.054995553	0.737354494	27.92146609	0.285714286	0.641772489
76	KBLM	2013	0.428571429	0.011734891	0.803189196	27.20682608	0.175824176	0.656223653
77	KIAS	2013	0.05106383	0.033185144	0.982413605	28.45119951	0.131868132	1.130384381
78	KLBF	2013	0.463414634	0.174144214	0.567073831	30.05715581	0.340659341	6.8934344
79	LION	2013	0.321285141	0.129894747	0.576976315	26.93500562	0.142857143	1.501239809
80	LMSH	2013	0.100133511	0.101504184	0.32215625	25.67696104	0.120879121	0.695223362
81	MAIN	2013	0.253521127	0.109118853	0.590958702	28.42600201	0.175824176	6.239686835
82	MERK	2013	0.455822268	0.25173353	0.866506518	27.26997423	0.164835165	8.265220783
83	MYOR	2013	0.206278027	0.104380527	0.330651324	29.90420041	0.153846154	5.971660033
84	ROTI	2013	1.179692505	0.086693488	0.7075	28.23133403	0.208791209	6.557588097
85	SCCO	2013	0.491159136	0.059568893	0.672601193	28.19748897	0.142857143	1.27833908
86	SKLT	2013	0.18115942	0.03788216	0.960911515	26.43365805	0.065934066	0.890318476
87	SMCB	2013	0.443548387	0.063934585	0.806432659	30.33204603	0.604395604	1.98714269
88	SMGR	2013	0.406629834	0.173881034	0.51005577	31.05830474	0.362637363	3.849344197
89	SMSM	2013	0.280373832	0.197478144	0.581255836	28.16909803	0.186813187	4.885018846
90	TCID	2013	0.464824121	0.109245334	0.737739205	28.01352629	0.307692308	2.022580023
91	TKIM	2013	0.102040816	0.010368697	0.596073286	31.09396284	0.527472527	0.245866287
92	TOTO	2013	0.418410042	0.135471616	0.962096899	28.18845033	0.252747253	3.682972507
93	TPIA	2013	0.394557823	0.005782626	0.953385156	30.78230803	0.483516484	0.933287583

No	Kode	Tahun	DPR	ROA	KI	SIZE	CSR	PBV
94	TRIS	2013	0.280112045	0.109343454	0.698186112	26.88748179	0.175824176	1.325177189
95	TRST	2013	0.833333333	0.010109281	0.597165002	28.81303033	0.109890110	0.410603841
96	TSPC	2013	0.531914894	0.118073239	0.77336596	29.31889267	0.043956044	3.785964866
97	UNIC	2013	0.142486085	0.038281348	0.790121259	28.82450593	0.384615385	0.410974753
98	VOKS	2013	1.06292517	0.019987804	0.534672207	28.30183594	0.296703297	1.022919231
99	AISA	2014	0.069639143	0.051248951	0.620928102	29.62896351	0.285714286	1.880392455
100	ALDO	2014	0.075075075	0.059025203	0.584055944	26.60048122	0.230769231	2.535712355
101	ALMI	2014	6.329113924	0.000606693	0.821261039	28.79805157	0.175824176	0.257533207
102	AMFG	2014	0.075685904	0.117046767	0.847275346	28.99670223	0.362637363	1.097046387
103	ASII	2014	0.135021097	0.093738481	0.501148083	33.09497579	0.384615385	2.498174779
104	AUTO	2014	0.397790055	0.066505384	0.799999987	30.29692386	0.406593407	1.997017192
105	BATA	2014	0.544168962	0.091343727	0.871503769	27.37598832	0.065934066	3.347582757
106	BRAM	2014	0.260544632	0.051529246	0.658121516	28.98022153	0.285714286	1.007391488
107	CEKA	2014	0.724637681	0.031928835	0.920119328	27.88111817	0.098901099	0.830153524
108	CPIN	2014	0.429906542	0.082846069	0.555335127	30.67948833	0.131868132	5.514437084
109	CTBN	2014	1.163522013	0.100330333	0.824425033	28.78635673	0.494505495	2.438638723
110	DLTA	2014	0.681005618	0.290412082	0.816711121	27.62293565	0.175824176	8.169207445
111	DPNS	2014	0.429184549	0.054001826	0.596400041	26.31752106	0.208791209	0.495118707
112	GDYR	2014	0.342802294	0.021846966	0.940195122	28.08144627	0.252747253	0.90628349
113	GGRM	2014	0.286738351	0.092669828	0.755469344	31.69526036	0.120879121	3.514795081
114	HMSP	2014	1.046061128	0.358733509	0.981786038	30.97672799	0.131868132	22.29148087
115	ICBP	2014	0.425055928	0.101632258	0.805329454	30.84629892	0.329670330	5.078840863
116	IGAR	2014	0.298240382	0.156901095	0.848188236	26.58089833	0.307692308	1.162433065
117	INAI	2014	0.114893006	0.02458392	0.672667298	27.52263565	0.109890110	0.760274276

<b>No</b>	<b>Kode</b>	<b>Tahun</b>	<b>DPR</b>	<b>ROA</b>	<b>KI</b>	<b>SIZE</b>	<b>CSR</b>	<b>PBV</b>
118	INDF	2014	0.38172043	0.060753439	0.500670833	32.08626628	0.406593407	1.471609165
119	INDS	2014	0.518081028	0.055924671	0.88108261	28.45636521	0.142857143	0.574297917
120	INKP	2014	0.086716394	0.019350931	0.527231309	32.03167261	0.351648352	0.189879722
121	INTP	2014	0.629967454	0.1825866	0.640333532	30.99434261	0.505494505	3.713194731
122	IPOL	2014	0.133312003	0.014400178	0.642569986	28.90306542	0.351648352	0.386180856
123	JPFA	2014	0.322580645	0.024465058	0.575084336	30.38661849	0.252747253	4.735776418
124	KAEF	2014	0.229640152	0.074039416	0.900252071	28.7925031	0.263736264	4.275755189
125	KBLI	2014	0.228702115	0.052402182	0.583801284	27.92171226	0.307692308	0.592082596
126	KIAS	2014	0.257240204	0.041866903	0.982413605	28.4209129	0.164835165	1.124028361
127	KLBF	2014	0.386363636	0.170711071	0.567134631	30.15073429	0.329670330	8.737630351
128	LION	2014	0.42462845	0.081655405	0.576976315	27.12036667	0.142857143	1.089575964
129	LMSH	2014	0.259403372	0.052911295	0.32215625	25.66430521	0.153846154	0.534017714
130	MASA	2014	0.0133312	0.000756577	0.435764006	29.68723199	0.252747253	0.822935342
131	MERK	2014	0.77150969	0.253240795	0.866506518	27.29778298	0.197802198	6.472926112
132	MYOR	2014	0.509977827	0.039823192	0.330651324	29.96230134	0.208791209	4.558376367
133	PBRX	2014	0.049992001	0.02757939	0.461924667	29.15313792	0.230769231	1.278825379
134	ROTI	2014	0.08373591	0.088001318	0.7075	28.3931785	0.230769231	7.30177041
135	SCCO	2014	0.22556391	0.08310284	0.672601193	28.13543051	0.153846154	0.997129038
136	SKBM	2014	0.151237956	0.137199885	0.814240634	27.19952107	0.142857143	2.857524476
137	SKLT	2014	0.167644593	0.049704352	0.960911515	26.52711954	0.076923077	1.351142389
138	SMCB	2014	0.390804598	0.038898244	0.806432659	30.47566023	0.604395604	1.911658461
139	SMGR	2014	0.43434968	0.162425514	0.51005577	31.16659396	0.373626374	3.843248024
140	SMSM	2014	0.424354244	0.240921576	0.581255836	28.19029113	0.197802198	5.962858789
141	TCID	2014	0.426758939	0.094059502	0.737739205	28.24795406	0.373626374	2.745369025

No	Kode	Tahun	DPR	ROA	KI	SIZE	CSR	PBV
142	TKIM	2014	0.079987202	0.007552373	0.596073286	31.15420371	0.538461538	0.195023171
143	TOTO	2014	0.168350168	0.144924554	0.962096899	28.3377204	0.318681319	3.198616437
144	TPIA	2014	0.143636364	0.009294581	0.957387027	30.81106139	0.505494505	0.907387552
145	TRIS	2014	0.415391342	0.068488268	0.670650314	26.98632515	0.197802198	1.197005878
146	TRST	2014	0.454545455	0.00922473	0.597165002	28.81314256	0.109890110	0.605758802
147	TSPC	2014	0.581395349	0.104473667	0.775248204	29.35248874	0.054945055	3.119903765
148	ULTJ	2014	0.12244898	0.097138429	0.465899949	28.70160545	0.175824176	4.743627949
149	UNIC	2014	1.188381288	0.010904674	0.790121259	28.71305659	0.351648352	0.341854834
150	ALDO	2015	0.140056022	0.065788007	0.584055944	26.62592873	0.208791209	2.365016683
151	AMFG	2015	0.10178117	0.079935367	0.848197465	29.08269934	0.384615385	0.838499414
152	ASII	2015	0.495798319	0.063613584	0.501148083	33.13405326	0.406593407	1.919667745
153	AUTO	2015	0.409090909	0.022504953	0.799999987	30.29401189	0.340659341	0.760253271
154	BATA	2015	0.056408712	0.162864693	0.871087308	27.40193239	0.065934066	2.13820788
155	BRAM	2015	0.374697432	0.043084696	0.658121516	29.02874867	0.351648352	0.830378137
156	CPIN	2015	0.160714286	0.069679414	0.555335127	30.84655761	0.131868132	3.334317953
157	CTBN	2015	2.475247525	0.036462723	0.886896023	28.75774991	0.428571429	2.389957101
158	DPNS	2015	0.453172205	0.035919063	0.598665209	26.33815557	0.208791209	0.531079046
159	GGRM	2015	0.23916293	0.101610771	0.755469344	31.78214626	0.109890110	2.784284713
160	HMSP	2015	10.48387097	0.272641689	0.925	31.26888945	0.263736264	13.66051816
161	ICBP	2015	0.86381323	0.110055697	0.805329454	30.91045093	0.351648352	4.794808805
162	INAI	2015	0.387468172	0.02151135	0.672667298	27.916395	0.219780220	0.534999237
163	INDF	2015	0.750853242	0.040394635	0.500670833	32.15097678	0.483516484	1.053734428
164	INKP	2015	0.044283679	0.031647337	0.527231309	32.21169924	0.384615385	0.143670024
165	INTP	2015	1.140703687	0.157630952	0.640333532	30.95022578	0.527472527	3.443546043

No	Kode	Tahun	DPR	ROA	KI	SIZE	CSR	PBV
166	JECC	2015	3.65408039	0.001814306	0.901476852	27.93737583	0.241758242	0.261075094
167	KAEF	2015	0.178457616	0.077309779	0.900252071	28.86500291	0.318681319	2.349545282
168	KBLI	2015	0.138937131	0.074346637	0.575200241	28.07043656	0.318681319	0.464160646
169	KBLM	2015	0.454545455	0.019499762	0.825423929	27.2069628	0.274725275	0.498658607
170	KLBF	2015	0.444340505	0.15023595	0.566867965	30.24815541	0.351648352	5.656751091
171	LION	2015	0.454545455	0.071979458	0.576976315	27.18368683	0.164835165	1.20142676
172	LMSH	2015	0.5	0.014534336	0.32215625	25.61948306	0.175824176	0.490922482
173	MERK	2015	1.339829476	0.222155644	0.866506518	27.18730386	0.230769231	6.409551387
174	MLBI	2015	0.584745763	0.236527258	0.817822022	28.37336457	0.285714286	22.54122743
175	MYOR	2015	2.909090909	0.110223439	0.330651324	30.05959686	0.230769231	5.251289652
176	PBRX	2015	0.051520897	0.019468596	0.515983585	29.44577268	0.230769231	1.212256441
177	ROTI	2015	0.103461179	0.099965391	0.7075	28.62661224	0.230769231	5.38745368
178	SCCO	2015	0.258732212	0.089738688	0.71151484	28.20377554	0.153846154	0.830266261
179	SKBM	2015	0.269784173	0.052519811	0.80486262	27.36246726	0.153846154	2.5720837
180	SKLT	2015	0.169204738	0.053211933	0.960911515	26.65580474	0.142857143	1.680913827
181	SMCB	2015	2.826086957	0.010081645	0.806432659	30.48581607	0.450549451	0.902333081
182	SMGR	2015	0.492572178	0.118612611	0.51005577	31.27262862	0.439560440	2.464189526
183	SMSM	2015	0.675675676	0.207785837	0.581255836	28.42857696	0.186813187	4.75808595
184	TCID	2015	0.144017725	0.261502859	0.737739205	28.3643966	0.384615385	1.934605624
185	TKIM	2015	1.442585113	0.000541009	0.596073276	31.24757757	0.538461538	0.099757224
186	TOTO	2015	0.177304965	0.116922322	0.923613023	28.52283097	0.318681319	4.808711776
187	TPIA	2015	0.17125	0.014098044	0.957794391	30.88217513	0.472527473	0.920973687
188	TRIS	2015	0.406504065	0.076473944	0.669570482	27.08246999	0.197802198	0.928430496
189	TRST	2015	0.555555556	0.007539885	0.566894347	28.84217592	0.109890110	0.444821297

<b>No</b>	<b>Kode</b>	<b>Tahun</b>	<b>DPR</b>	<b>ROA</b>	<b>KI</b>	<b>SIZE</b>	<b>CSR</b>	<b>PBV</b>
190	TSPC	2015	0.551724138	0.084207075	0.781630048	29.46914385	0.054945055	1.81571225
191	AMFG	2016	0.133333333	0.04731139	0.848197465	29.3366579	0.428571429	0.80788739
192	ASII	2016	0.147058824	0.069893643	0.501148083	33.19881203	0.351648352	2.394474878
193	AUTO	2016	0.103448276	0.033083215	0.799999987	30.31288298	0.362637363	0.937730581
194	BATA	2016	0.759310557	0.052478453	0.871087308	27.41378871	0.087912088	1.843292236
195	BRAM	2016	0.398890243	0.075321032	0.658121516	29.01674153	0.351648352	1.124938483
196	CPIN	2016	0.214814815	0.093030926	0.555335127	30.81758009	0.208791209	3.579073976
197	DLTA	2016	0.378548896	0.212481199	0.816711121	27.81150486	0.296703297	3.954363919
198	DPNS	2016	0.146713615	0.033800715	0.598665209	26.41406292	0.230769231	0.5031139
199	FASW	2016	0.07643799	0.09064342	0.857704555	29.7808307	0.395604396	3.216567706
200	GGRM	2016	0.749279539	0.105996963	0.755469344	31.77338783	0.208791209	3.107585549
201	ICBP	2016	0.828478964	0.125642085	0.805329454	30.99493011	0.351648352	5.405211492
202	IGAR	2016	0.103906899	0.157704308	0.848188236	26.80882545	0.285714286	1.352635838
203	INAI	2016	0.40096231	0.026551243	0.672667298	27.92296839	0.219780220	0.791949037
204	INDF	2016	0.387990762	0.064094154	0.500670833	32.03986633	0.505494505	1.583582762
205	INKP	2016	0.049971401	0.029475345	0.527231309	32.16237722	0.406593407	0.137241016
206	INTP	2016	0.394723076	0.12836632	0.510014315	31.03722528	0.538461538	2.168851613
207	IPOL	2016	0.007405762	0.022967464	0.734160447	28.97125142	0.439560440	0.416122202
208	JECC	2016	0.228360032	0.083431375	0.901476852	28.09299924	0.285714286	0.467739881
209	JPFA	2016	0.079365079	0.112804793	0.629772307	30.58858547	0.318681319	4.260853897
210	KAEF	2016	0.186915888	0.058882225	0.900252071	29.15980468	0.307692308	6.724245038
211	KBLI	2016	0.083902673	0.178654929	0.585200228	28.25771991	0.340659341	0.837023023
212	KBLM	2016	0.157894737	0.033242544	0.824127411	27.18331327	0.274725275	0.838283412
213	KLBF	2016	0.387280881	0.154399285	0.56509108	30.35402621	0.362637363	5.697743978

No	Kode	Tahun	DPR	ROA	KI	SIZE	CSR	PBV
214	LION	2016	0.49382716	0.061744845	0.576976315	27.25387083	0.153846154	1.160570357
215	LMSH	2016	0.076923077	0.038401309	0.32215625	25.81596131	0.186813187	0.482796665
216	MERK	2016	0.29154519	0.206796116	0.866506518	27.33521936	0.241758242	7.07361377
217	MYOR	2016	4.918032787	0.107462529	0.590708386	30.18998505	0.252747253	5.870480172
218	PBRX	2016	0.064397928	0.025574677	0.478419836	29.57905756	0.230769231	0.969479816
219	ROTI	2016	0.191827879	0.095825953	0.693670927	28.70248173	0.230769231	5.613495098
220	SCCO	2016	0.135869565	0.139021469	0.71151484	28.52708281	0.186813187	1.225494838
221	SKLT	2016	0.199933356	0.036333456	0.8355019	27.0658096	0.175824176	0.718376306
222	SMGR	2016	0.400144357	0.102540247	0.51005577	31.42035423	0.439560440	1.779976425
223	SMSM	2016	0.443037975	0.222727232	0.581255836	28.44405578	0.230769231	3.571712334
224	TCID	2016	0.508684864	0.074165722	0.737739205	28.41268319	0.384615385	1.409483973
225	TKIM	2016	0.127685546	0.003071912	0.596073275	31.14673044	0.549450549	0.154119116
226	TOTO	2016	0.306184936	0.06529864	0.923613023	28.57936886	0.329670330	3.372561149
227	TPIA	2016	0.109748083	0.14095213	0.957794391	30.98971173	0.494505495	4.402959767
228	TRIS	2016	1.498127341	0.03941374	0.669570482	27.18426697	0.208791209	1.013394174
229	TRST	2016	0.416666667	0.010270135	0.56690325	28.82208989	0.109890110	0.435944699
230	TSPC	2016	0.420168067	0.082828651	0.784186537	29.51593805	0.054945055	1.912508654
231	ULTJ	2016	0.011522634	0.167443314	0.370916508	29.0753956	0.175824176	3.783038813
232	UNIC	2016	0.085737845	0.093085088	0.688972702	28.75074722	0.406593407	0.417406306

#### Lampiran 4

##### Kriteria Pengungkapan *Corporate Social Responsibility* (CSR)

Kode	Kriteria
EC1	Nilai ekonomi langsung yang dihasilkan dan didistribusikan
EC2	Implikasi finansial dan risiko serta peluang lainnya kepada kegiatan organisasi karena perubahan iklim
EC3	Cakupan kewajiban organisasi atas program imbalan pasti
EC4	Bantuan finansial yang diterima dari pemerintah
EC5	Rasio upah standar pegawai pemula menurut gender dibandingkan dengan upah minimum regional di lokasi operasional yang signifikan
EC6	Perbandingan manajemen senior yang diperkerjakan dari masyarakat lokal di lokasi operasi yang signifikan
EC7	Pembangunan dan dampak dari investasi infrastruktur dan jasa yang diberikan
EC8	Dampak ekonomi tidak langsung yang signifikan termasuk besarnya dampak
EC9	Perbandingan pembelian dan pemasok lokal dilokasi operasional yang signifikan
EN1	Bahan yang digunakan berdasarkan berat atau volume
EN2	Persentase bahan yang digunakan yang merupakan bahan input daur ulang
EN3	Konsumsi energi dalam organisasi
EN4	Konsumsi energi diluar organisasi
EN5	Intensitas energy



Kode	Kriteria
EN6	Pengurangan konsumsi energi
EN7	Pengurangan kebutuhan energi pada produk dan jasa
EN8	Total pengambilan air berdasarkan sumber
EN9	Sumber air yang secara signifikan dipengaruhi oleh pengambilan air
EN10	Persentase dan total volume air yang didaur ulang dan digunakan kembali
EN11	Lokasi operasional yang dimiliki, disewa, dikelola didalam, atau yang berdekatan dengan kawasan lindung dan kawasan dengan nilai keanekaragaman hayati tinggi diluar kawasan lindung
EN12	Uraian dampak signifikan kegiatan, produk, dan jasa terhadap keanekaragaman hayati di kawasan lindung dan kawasan dengan nilai keanekaragaman hayati tinggi di luar kawasan lindung
EN13	Habitat yang dilindungi dan dipulihkan
EN14	Jumlah total spesies dalam IUCN red list dan spesies dalam daftar spesies yang dilindungi nasional dengan habitat ditempat yang dipengaruhi operasional, berdasarkan tingkat risiko kepunahan
EN15	Emisi gas rumah kaca langsung
EN16	Emisi gas rumah kaca energi tidak langsung
EN17	Emisi gas rumah kaca tidak langsung lainnya
EN18	Intensitas emisi gas rumah kaca
EN19	Pengurangan emisi gas rumah kaca

Kode	Kriteria
EN20	Emisi bahan perusak ozon
EN21	NO <sub>x</sub> , SO <sub>x</sub> dan emisi udara signifikan lainnya
EN22	Total air yang dibuang berdasarkan kualitas dan tujuan
EN23	Bobot total limbah berdasarkan jenis dan metode pembuangan
EN24	Jumlah dan volume total tumpahan signifikan
EN25	Bobot limbah yang dianggap berbahaya menurut ketentuan konvensi basel lamp. 1, 2, 3, dan 8 yang diangkut, diimpor, diekspor, atau diolah, dan persentase limbah yang diangkut untuk pengiriman internasional
EN26	Identitas, ukuran, status lindung, dan nilai keanekaragaman hayati dari badan air dan habitat terkait yang secara signifikan terkena dampak dari air buangan dan limpasan dari organisasi
EN27	Tingkat mitigasi dampak terhadap dampak lingkungan produk dan jasa
EN28	Persentase produk yang terjual dan kemasannya yang direklamasikan menurut kategori
EN29	Nilai moneter denda signifikan dan jumlah total sanksi <i>non-moneter</i> karena ketidakpatuhan terhadap UU dan peraturan lingkungan
EN30	Dampak lingkungan signifikan dari pengangkutan produk dan barang lain serta bahan untuk operasional organisasi, dan pengangkutan tenaga kerja
EN31	Total pengeluaran dan investasi perlindungan lingkungan berdasarkan jenis
EN32	Persentase penapisan pemasok baru menggunakan kriteria lingkungan

Kode	Kriteria
EN33	Dampak lingkungan negatif signifikan aktual dan potensial dalam rantai pasokan dan tindakan yang diambil
EN34	Jumlah pengaduan tentang dampak lingkungan yang diajukan, ditangani, dan diselesaikan melalui mekanisme pengaduan resmi
LA1	Jumlah total dan tingkat perekrutan karyawan baru dan <i>turnover</i> karyawan menurut kelompok umur, gender, dan wilayah
LA2	Tunjangan yang diberikan bagi karyawan purnawaktu yang tidak diberikan bagi karyawan sementara atau paruh waktu berdasarkan lokasi operasi yang signifikan
LA3	Tingkat kembali bekerja dan tingkat retensi setelah cuti melahirkan menurut <i>gender</i>
LA4	Jangka waktu minimum pemberitahuan mengenai perubahan operasional termasuk apakah hal tersebut tercantum dalam perjanjian bersama
LA5	Persentase total tenaga kerja yang diwakili dalam komite bersama formal manajemen pekerja yang membantu mengawasi dan memberikan saran program kesehatan dan keselamatan kerja
LA6	Jenis dan tingkat cedera, penyakit akibat kerja, hari hilang, dan kemangkiran serta jumlah total kematian akibat kerja, menurut daerah dan gender
LA7	Pekerja yang sering terkena atau beresiko tinggi terkena penyakit yang terkait dengan pekerjaan mereka
LA8	Topik kesehatan dan keselamatan yang tercakup dalam perjanjian formal dengan serikat pekerja
LA9	Jam pelatihan rata-rata per tahun per karyawan menurut <i>gender</i> dan menurut kategori karyawan
LA10	Program untuk manajemen keterampilan dan pembelajaran seumur hidup yang mendukung keberlanjutan kerja karyawan dan

Kode	Kriteria
	membantu mereka mengelola purna bakti
LA11	Persentase karyawan yang menerima <i>review</i> kinerja dan pengembangan karier secara reguler menurut <i>gender</i> dan kategori karyawan
LA12	Komposisi badan tata kelola dan pembagian karyawan per kategori karyawan menurut <i>gender</i> , kelompok usia, keanggotaan kelompok minoritas, dan indikator keberagaman lainnya
LA13	Rasio gaji pokok dan remunerasi bagi perempuan terhadap laki-laki menurut kategori karyawan berdasarkan lokasi operasional yang signifikan
LA14	Persentase penapisan pemasok baru menggunakan kriteria praktik ketenagakerjaan
LA15	Dampak negatif aktual dan potensial yang signifikan terhadap praktik ketenagakerjaan dalam rantai pasokan dan tindakan yang diambil
LA16	Jumlah pengaduan tentang praktik ketenagakerjaan yang diajukan, ditangani, dan diselesaikan melalui mekanisme pengaduan resmi
HR1	Jumlah total dan persentase perjanjian dan kontrak investasi yang signifikan yang menyertakan klausul terkait HAM atau penapisan berdasarkan HAM
HR2	Jumlah waktu pelatihan karyawan tentang kebijakan atau prosedur HAM terkait dengan aspek HAM yang relevan dengan operasi termasuk persentase karyawan yang dilatih
HR3	Jumlah total insiden diskriminasi dan tindakan perbaikan yang diambil

Kode	Kriteria
HR4	Operasi dan pemasok teridentifikasi yang mungkin melanggar atau berisiko tinggi melanggar hak untuk melaksanakan kebebasan berserikat dan perjanjian kerja bersama dan tindakan yang diambil untuk mendukung hak-hak tersebut
HR5	Operasi dan pemasok yang diidentifikasi berisiko tinggi melakukan eksploitasi pekerja anak dan tindakan yang diambil untuk berkontribusi dalam penghapusan pekerja anak yang efektif
HR6	Operasi dan pemasok yang diidentifikasi berisiko tinggi melakukan pekerja paksa atau wajib kerja dan tindakan untuk berkontribusi dalam penghapusan segala bentuk pekerja paksa atau wajib kerja
HR7	Persentase petugas pengamanan yang dilatih dalam kebijakan atau prosedur HAM di organisasi yang relevan dengan operasi
HR8	Jumlah total insiden pelanggaran yang melibatkan hak-hak masyarakat adat dan tindakan yang diambil
HR9	Jumlah total dan persentase operasi yang telah melakukan <i>reviu</i> atau asesmen dampak HAM
HR10	Persentase penapisan pemasok baru menggunakan kriteria HAM
HR11	Dampak negatif aktual dan potensial yang signifikan terhadap HAM dalam rantai pasokan dan tindakan yang diambil
HR12	Jumlah pengaduan tentang dampak terhadap HAM yang diajukan, ditangani, dan diselesaikan melalui mekanisme pengaduan formal
SO1	Persentase operasi dengan pelibatan masyarakat lokal, asesmen dampak, dan program pengembangan yang diterapkan
SO2	Operasi dengan dampak negatif aktual dan potensial yang signifikan terhadap masyarakat lokal
SO3	Jumlah total dan persentase operasi yang dinilai terhadap risiko terkait dengan korupsi dan risiko signifikan yang teridentifikasi

Kode	Kriteria
SO4	Komunikasi dan pelatihan mengenai kebijakan dan prosedur anti korupsi
SO5	Insiden korupsi yang terbukti dan tindakan yang diambil
SO6	Nilai total kontribusi politik berdasarkan negara dan penerima manfaat
SO7	Jumlah total tindakan hukum terkait anti persaingan, <i>anti-trust</i> , serta praktik monopoli dan hasilnya
SO8	Nilai moneter denda yang signifikan dan jumlah total sanksi <i>non-moneter</i> atas ketidakpatuhan terhadap UU dan peraturan
SO9	Persentase penapisan pemasok baru menggunakan kriteria dampak terhadap masyarakat
SO10	Dampak negatif aktual dan potensial yang signifikan terhadap masyarakat dalam rantai pasokan dan tindakan yang diambil
SO11	Jumlah pengaduan tentang dampak terhadap masyarakat yang diajukan, ditangani, dan diselesaikan melalui mekanisme pengaduan resmi
PR1	Persentase kategori produk dan jasa yang signifikan yang dampaknya terhadap kesehatan dan keselamatan yang dinilai untuk peningkatan
PR2	Total jumlah insiden ketidakpatuhan terhadap peraturan dan koda sukarela terkait dampak kesehatan dan keselamatan dari produk dan jasa sepanjang daur hidup menurut jenis hasil
PR3	Jenis informasi produk dan jasa yang diharuskan oleh prosedur organisasi terkait dengan informasi dan pelabelan produk dan jasa serta persentase kategori produk dan jasa yang signifikan harus mengikuti persyaratan informasi sejenis
PR4	Jumlah total insiden ketidakpatuhan terhadap peraturan dan koda sukarela terkait dengan informasi dan pelabelan produk dan jasa menurut jenis hasil

<b>Kode</b>	<b>Kriteria</b>
PR5	Hasil survei untuk mengukur kepuasan pelanggan
PR6	Penjualan produk yang dilarang atau disengketakan
PR7	Jumlah total insiden ketidakpatuhan terhadap peraturan dan koda sukarela tentang komunikasi pemasaran, termasuk iklan, promosi, dan sponsor menurut jenis hasil
PR8	Jumlah total keluhan yang terbukti terkait dengan pelanggaran privasi pelanggan dan hilangnya data pelanggan
PR9	Nilai moneter denda yang signifikan atas ketidakpatuhan terhadap UU dan peraturan terkait penyediaan dan penggunaan produk dan jasa

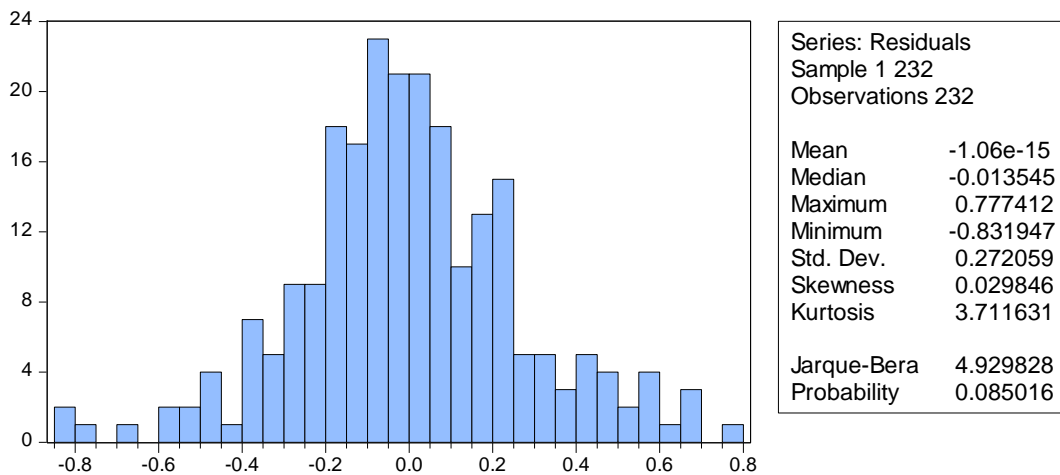
## Lampiran 5

### Analisis Statistik Deskriptif

	DPR	ROA	KI	SIZE	CSR	PBV
Mean	0.558317	0.094325	0.700441	28.98708	0.255116	2.839241
Median	0.365920	0.082242	0.702000	28.73190	0.230769	1.776794
Maximum	10.48387	0.394769	0.982414	33.19881	0.604396	22.54123
Minimum	0.007406	0.000512	0.322156	25.57957	0.043956	0.099757
Std. Dev.	0.972706	0.074845	0.166488	1.677342	0.128960	3.297910
Skewness	6.325814	1.332662	-0.202720	0.304672	0.560690	3.275566
Kurtosis	55.40662	5.102059	2.240786	2.458250	2.618595	17.55697
Jarque-Bera	28096.33	111.3852	7.160939	6.426333	13.56197	2463.287
Probability	0.000000	0.000000	0.027863	0.040229	0.001135	0.000000
Sum	129.5294	21.88344	162.5022	6725.002	59.18681	658.7039
Sum Sq. Dev.	218.5621	1.294014	6.402890	649.9133	3.841713	2512.405
Observations	232	232	232	232	232	232

## Lampiran 6

### Uji Normalitas





## Lampiran 7

### Analisis Regresi Linear Berganda

Variable	Coefficient	Std. Error	t-Statistic	Prob.
C	-2.600234	0.383608	-6.778358	0.0000
LOG_DPR	0.107857	0.040195	2.683370	0.0078
SQRT_ROA	2.584179	0.149423	17.29436	0.0000
KI	0.250858	0.113616	2.207942	0.0283
SIZE	0.074495	0.012920	5.766096	0.0000
CSR	-0.665712	0.165835	-4.014315	0.0001

Ket. *Dependent Variable*: LOG\_PBV

## Lampiran 8

### Uji Heteroskedastisitas

Heteroskedasticity Test: Harvey

F-statistic	2.030232	Prob. F(5,226)	0.0754
Obs*R-squared	9.972720	Prob. Chi-Square(5)	0.0760
Scaled explained SS	10.54733	Prob. Chi-Square(5)	0.0611

## Lampiran 9

### Uji Multikolinearitas

Variable	Coefficient Variance	Uncentered VIF	Centered VIF
C	0.147155	451.2672	NA
LOG_DPR	0.001616	2.369873	1.058905
SQRT_ROA	0.022327	6.458354	1.022597
KI	0.012909	20.51397	1.092515
SIZE	0.000167	431.5270	1.433907
CSR	0.027501	6.885372	1.396513

**Lampiran 10**  
Uji Autokorelasi

R-squared	0.627895	Mean dependent var	0.237692
Adjusted R-squared	0.619662	S.D. dependent var	0.445995
S.E. of regression	0.275052	Akaike info criterion	0.281810
Sum squared resid	17.09773	Schwarz criterion	0.370949
Log likelihood	-26.68991	Hannan-Quinn criter.	0.317759
F-statistic	76.27094	Durbin-Watson stat	1.965204
Prob(F-statistic)	0.000000		

**Lampiran 11**  
Uji Hipotesis

Variable	Coefficient	Std. Error	t-Statistic	Prob.
C	-2.600234	0.383608	-6.778358	0.0000
LOG_DPR	0.107857	0.040195	2.683370	0.0078
SQRT_ROA	2.584179	0.149423	17.29436	0.0000
KI	0.250858	0.113616	2.207942	0.0283
SIZE	0.074495	0.012920	5.766096	0.0000
CSR	-0.665712	0.165835	-4.014315	0.0001

*Ket. Dependent Variable: LOG\_PBV*

**Lampiran 12**  
Uji Koefisien Determinasi

R-squared	0.627895	Mean dependent var	0.237692
Adjusted R-squared	0.619662	S.D. dependent var	0.445995
S.E. of regression	0.275052	Akaike info criterion	0.281810
Sum squared resid	17.09773	Schwarz criterion	0.370949
Log likelihood	-26.68991	Hannan-Quinn criter.	0.317759
F-statistic	76.27094	Durbin-Watson stat	1.965204
Prob(F-statistic)	0.000000		