

Comments  
PER CVT 1500RPM // ROLLER 9GRAM

RPM	HP (HP)Q (N*M*3)	T
2750	3.0	11.20
3000	3.3	11.72
3250	3.5	12.20
3500	3.9	14.03
3750	7.6	14.39
4000	7.9	14.03
4250	7.9	13.36
4500	8.0	12.63
4723	8.1	12.19
5000	8.0	11.77
5250	7.8	10.74
5500	7.8	10.45
5750	7.8	8.92
6000	7.6	7.66
6250	7.3	7.96
6500	7.3	7.24
7000	7.3	7.01
7250	7.1	6.90
7500	6.9	6.83
7750	6.8	6.70
8000	6.6	5.79
8250	6.3	5.42
8500	6.0	4.95
8750	5.6	4.55
9000	5.2	4.07
9250	5.0	3.78
9500	4.6	3.39

LOSSES: 0.0 HP  
TOTAL ENGINE: 8.1 HP  
0.0 N\*M\*3  
14.39 N\*M\*3

C. Gambar Hasil pengujian torsi dan daya motor Menggunakan Roller 9 gram dengan Pegas CVT 1500 rpm.



PT. MOTOTECH INDONESIA  
 Jl. Ringroad Selatan, Komasan, Singosari,  
 Kabupaten Malang, 65132  
 Telp : +62 273 62 363 03

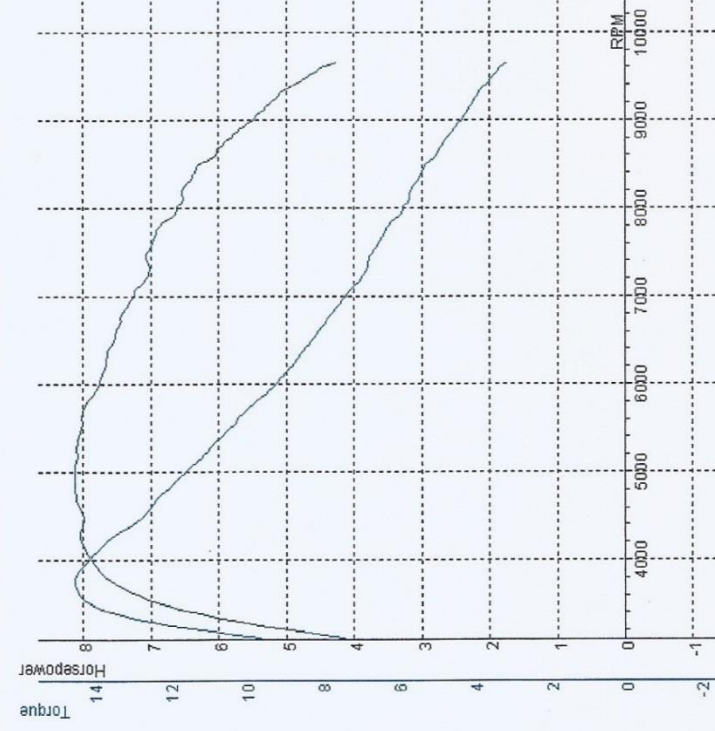
SPORTINO V33  
 DYNAMOMETER: MOTOTECH RPD  
 ROLLER INERTIA: 1.446

Displacement Correction  
 Correction Factor: ISO 1585  
 NOTE: Load Cell included.

TEST NAME: HONDA SCOOBY 110 T015  
 MAX POWER: 8.1 (8.1) / 4973  
 MAX TORQUE: 14.50 (14.50) / 3735  
 Temp. °C: 30.4 °C  
 Humidity %: 62 %  
 Pressure: 1000.0 mbar

KMH: 94.0  
 Date/Time: 6/14/2016 10:05:18 AM

DATA FOR TEST: HONDA SCOOBY 110 T015



Comments  
PER CVT 1500RPM // ROLLER 9GRAM

RPM	HP (HP) (N*M*M)	T
2750	4.5	10.24
3000	4.8	10.85
3250	5.4	11.98
3500	6.9	14.12
3735	7.5	14.50
3750	7.6	14.49
4000	7.9	14.08
4250	8.1	13.45
4500	8.0	12.68
4750	8.1	12.12
4973	8.1	11.64
5000	8.1	11.57
5250	8.1	10.97
5500	8.0	10.34
5750	8.0	9.84
6000	7.8	9.18
6250	7.7	8.66
6500	7.5	8.22
6750	7.4	7.80
7000	7.3	7.32
7250	7.0	6.85
7500	7.1	6.66
7750	6.9	6.30
8000	6.6	5.84
8250	6.5	5.57
8500	6.2	5.14
8750	5.9	4.78
9000	5.5	4.30
9250	5.1	3.92
9500	4.6	3.45

LOSSES: 0.0 HP  
 TOTAL ENGINE: 8.1 HP  
 0.0 N\*M\*M  
 14.50 N\*M\*M

Gambar Hasil pengujian torsi dan daya motor Menggunakan Roller 9 gram dengan Pegas CVT 1500 rpm.

SPORTYNVO3.3  
 DYNAMOMETER: MOTOTECH RPD  
 ROLLER INERTIA: 1.446

Displacement Correction  
 Correction Factor: ISO 1585  
 NOTE: Load Cell Included.

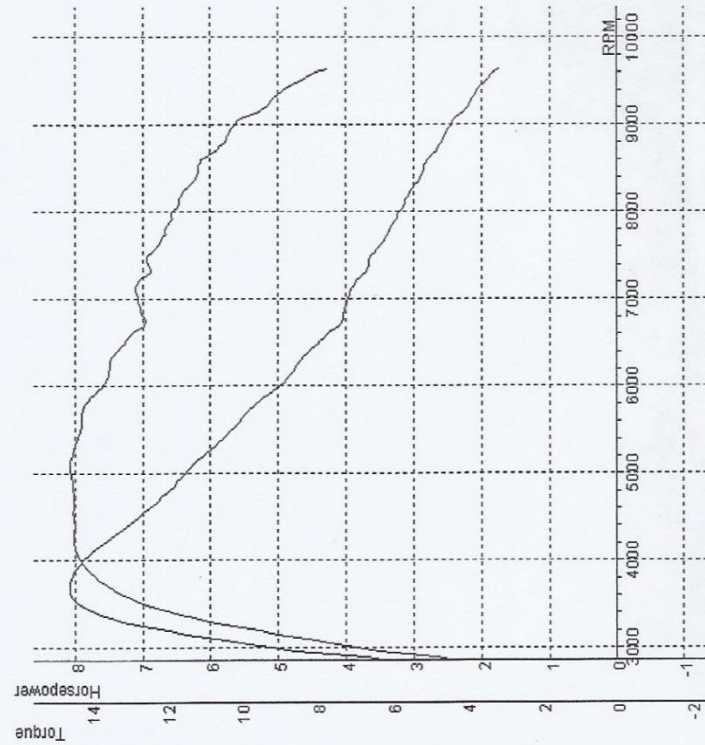
TEST NAME: HONDA SCOOPY 110 T016  
 MAX TORQUE: 14.56 (14.56) / 3675  
 Temp. °C: 30.4 °C  
 Humidity %: 62 %  
 Pressure: 1000.0 mbar  
 KMH: 93.8  
 Date/Time: 6/14/2016 10:05:48 AM

DATA FOR TEST: HONDA SCOOPY 110 T016

Comments PER CVT 1500RPM // ROLLER 9GRAM

RPM	HP (HP)	HP (N*M*MM)	T
2750	2.9	7.12	0.52
3000	3.8	9.20	0.58
3250	5.8	12.77	0.72
3500	7.1	14.39	0.86
3675	7.4	14.56	0.94
3750	7.6	14.52	1.00
4000	7.9	14.13	1.14
4250	8.0	13.46	1.28
4500	8.0	12.70	1.44
4750	8.0	11.97	1.62
5000	8.1	11.47	1.78
5070	8.1	11.36	1.82
5250	8.0	10.80	1.98
5500	7.9	10.21	2.16
5750	7.9	9.73	2.36
6000	7.6	8.92	2.60
6250	7.5	8.46	2.84
6500	7.3	7.89	3.08
6750	7.0	7.29	3.34
7000	7.1	7.14	3.62
7250	6.9	6.76	3.92
7500	6.9	6.52	4.20
7750	6.7	6.06	4.54
8000	6.5	5.76	4.88
8250	6.4	5.44	5.24
8500	6.2	5.13	5.62
8750	5.9	4.72	6.06
9000	5.6	4.43	6.50
9250	5.1	3.90	7.00
9500	4.6	3.45	7.56

LOSSES: 0.0 HP  
 TOTAL ENGINE: 8.1HP  
 0.0N\*MM  
 14.56N\*MM



Gambar Hasil pengujian torsi dan daya motor Menggunakan Roller 9 gram dengan Pegas CVT 1500 rpm.