

Lampiran 1**DATA PENELITIAN KUANTIL DALAM JUTA RUPIAH**

Tahun	PAD	PDRB	JUMLAH PENDUDUK	INVESTASI
2007Q1	13792470	0.673	0.231	10842.815
2007Q2	14860779	0.684	0.230	16355.335
2007Q3	15793529	0.694	0.230	21393.880
2007Q4	16590720	0.703	0.229	25958.450
2008Q1	17252351	0.710	0.229	30049.045
2008Q2	17778422	0.715	0.229	33665.665
2008Q3	18168934	0.719	0.229	36808.310
2008Q4	18423886	0.722	0.230	39476.980
2009Q1	17776174	0.712	0.231	40946.433
2009Q2	18066849	0.716	0.231	42957.250
2009Q3	18528807	0.724	0.232	44784.189
2009Q4	19162047	0.735	0.232	46427.249
2010Q1	20218302	0.766	0.235	49332.467
2010Q2	21093415	0.777	0.234	50029.357
2010Q3	22039117	0.785	0.233	49963.954
2010Q4	23055409	0.791	0.230	49136.259
2011Q1	24712198	0.785	0.251	32441.162
2011Q2	25641706	0.787	0.229	36130.925
2011Q3	26413840	0.790	0.268	45100.441
2011Q4	27028601	0.793	0.228	59349.707
2012Q1	27127137	0.797	0.223	96919.144
2012Q2	27570690	0.800	0.224	114511.746
2012Q3	28000411	0.804	0.225	130167.933
2012Q4	28416298	0.808	0.225	143887.703
2013Q1	28354213	0.812	0.223	155146.943
2013Q2	28928090	0.816	0.223	165203.527
2013Q3	29673789	0.820	0.223	173533.341
2013Q4	30591310	0.825	0.223	180136.384
2014Q1	31680654	0.829	0.224	185012.656
2014Q2	32941820	0.834	0.224	188162.158
2014Q3	34374809	0.839	0.225	189584.890
2014Q4	35979620	0.843	0.226	189280.851

Lampiran 2

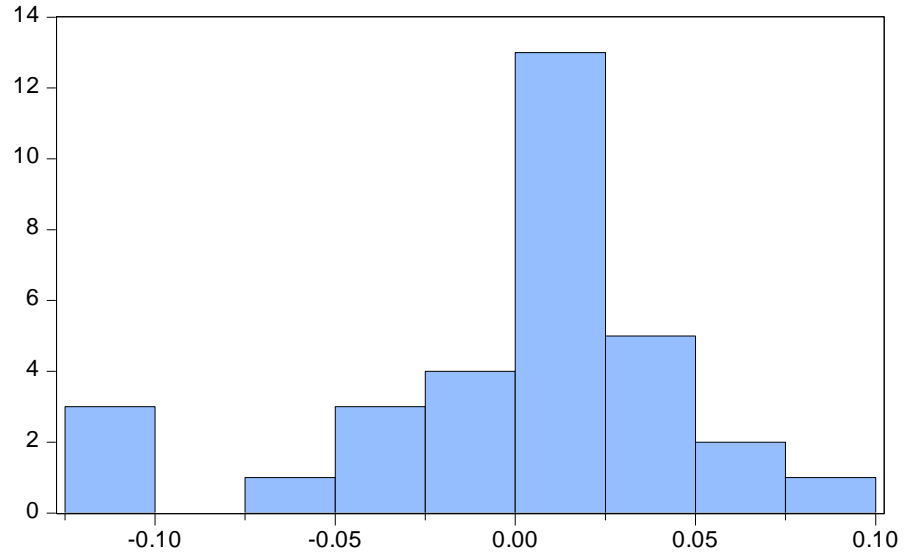
Uji t-Statistik

Dependent Variable: Y
Method: Least Squares
Date: 12/15/16 Time: 18:20
Sample: 2007Q1 2014Q4
Included observations: 32

Variable	Coefficient	Std. Error	t-Statistic	Prob.
C	17.29879	0.390640	44.28320	0.0000
X1	3.119183	0.342470	9.107913	0.0000
X2	0.229680	0.318401	0.721353	0.4767
X3	0.073782	0.031476	2.344034	0.0264
R-squared	0.970403	Mean dependent var		16.94898
Adjusted R-squared	0.967232	S.D. dependent var		0.267979
S.E. of regression	0.048509	Akaike info criterion		-3.097652
Sum squared resid	0.065888	Schwarz criterion		-2.914435
Log likelihood	53.56244	Hannan-Quinn criter.		-3.036921
F-statistic	306.0166	Durbin-Watson stat		0.407797
Prob(F-statistic)	0.000000			

Lampiran 3

UJI NORMALITAS



Series: Residuals
Sample 2007Q1 2014Q4
Observations 32

Mean 3.07e-15
Median 0.007595
Maximum 0.076015
Minimum -0.112183
Std. Dev. 0.046102
Skewness -0.922613
Kurtosis 3.777062

Jarque-Bera 5.344915
Probability 0.069082

Lampiran 4

UJI MULTIKOLONIERITAS

Variance Inflation Factors

Date: 12/15/16 Time: 20:33

Sample: 2007Q1 2014Q4

Included observations: 32

Variable	Coefficient Variance	Uncentered VIF	Centered VIF
C	0.152600	2075.166	NA
X1	0.117285	118.9589	7.078240
X2	0.101379	2981.475	1.760365
X3	0.000991	1648.407	8.565897

Lampiran 5

UJI HETEROSKEDASTISITAS

Heteroskedasticity Test: Breusch-Pagan-Godfrey

F-statistic	4.641473	Prob. F(3,28)	0.0093
Obs*R-squared	10.62821	Prob. Chi-Square(3)	0.0139
Scaled explained SS	11.29878	Prob. Chi-Square(3)	0.0102

Test Equation:

Dependent Variable: RESID^2

Method: Least Squares

Date: 12/15/16 Time: 18:27

Sample: 2007Q1 2014Q4

Included observations: 32

Variable	Coefficient	Std. Error	t-Statistic	Prob.
C	0.062045	0.024140	2.570176	0.0158
X1	0.075305	0.021164	3.558217	0.0014
X2	-0.019242	0.019676	-0.977950	0.3365
X3	-0.006194	0.001945	-3.184172	0.0035

R-squared	0.332131	Mean dependent var	0.002059
Adjusted R-squared	0.260574	S.D. dependent var	0.003486
S.E. of regression	0.002998	Akaike info criterion	-8.665452
Sum squared resid	0.000252	Schwarz criterion	-8.482235
Log likelihood	142.6472	Hannan-Quinn criter.	-8.604721
F-statistic	4.641473	Durbin-Watson stat	0.645964
Prob(F-statistic)	0.009331		

Lampiran 6

UJI AUTOKORELASI

Breusch-Godfrey Serial Correlation LM Test:

F-statistic	31.76372	Prob. F(2,26)	0.0000
Obs*R-squared	22.70676	Prob. Chi-Square(2)	0.0000

Test Equation:

Dependent Variable: RESID

Method: Least Squares

Date: 12/15/16 Time: 18:29

Sample: 2007Q1 2014Q4

Included observations: 32

Presample missing value lagged residuals set to zero.

Variable	Coefficient	Std. Error	t-Statistic	Prob.
C	0.129125	0.244604	0.527895	0.6020
X1	0.316553	0.227705	1.390185	0.1763
X2	-0.177357	0.180703	-0.981483	0.3354
X3	-0.027615	0.020466	-1.349306	0.1889
RESID(-1)	1.132186	0.178586	6.339736	0.0000
RESID(-2)	-0.338464	0.206403	-1.639822	0.1131

R-squared	0.709586	Mean dependent var	3.07E-15
Adjusted R-squared	0.653737	S.D. dependent var	0.046102
S.E. of regression	0.027129	Akaike info criterion	-4.209101
Sum squared resid	0.019135	Schwarz criterion	-3.934276
Log likelihood	73.34562	Hannan-Quinn criter.	-4.118004
F-statistic	12.70549	Durbin-Watson stat	2.082325
Prob(F-statistic)	0.000003		
